

# PRODUCT INFORMATION PACKET



Model No: 048A11T2021

Catalog No: X027

General Purpose Farm Duty Motor, 0.25 HP, 1 Ph, 60 Hz, 115/230 V, 1200 RPM, 48Y Frame, TEAO



Regal and LEESON are trademarks of Regal Rexnord Corporation or one of its affiliated companies.

©2025 Regal Rexnord Corporation, All Rights Reserved. MC017097E



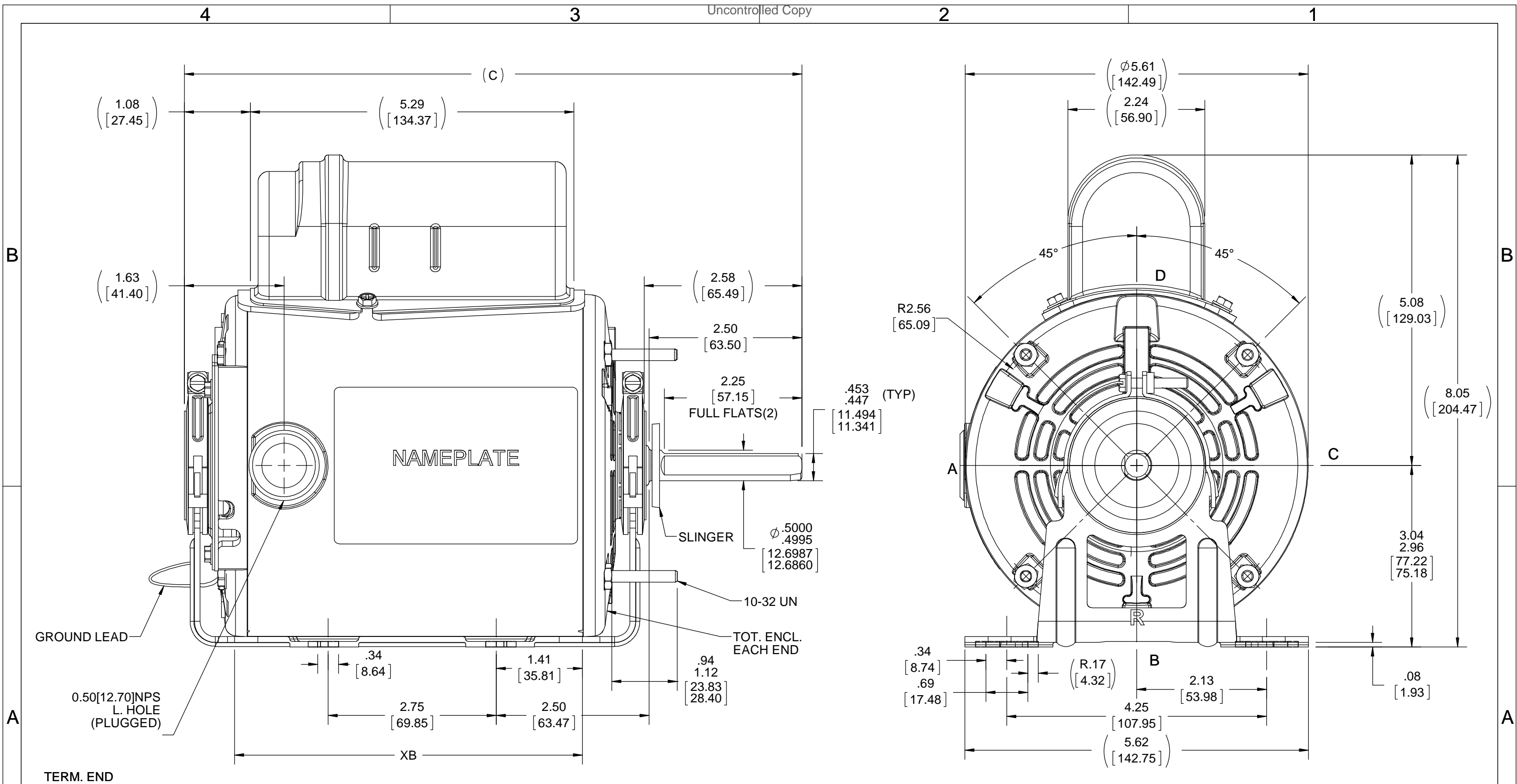


### Nameplate Specifications

Phase	1	Output HP	0.25 Hp
Output KW	0.19 kW	Voltage	115/230 V
Speed	1075 rpm	Service Factor	1
Frame	48Y	Enclosure	Totally Enclosed Air Over
Thermal Protection	Automatic	Efficiency	59.5 %
Ambient Temperature	40 °C	Frequency	60 Hz
Current	3.2/1.6 A	Power Factor	91
Duty	Continuous	Insulation Class	B
Design Code	NO DESIGN CODE	KVA Code	D
Drive End Bearing Size	6203	Opp Drive End Bearing Size	6203
UL	Recognized	CSA	Y
CE	N	IP Code	43
Number of Speeds	1		

### Technical Specifications

Electrical Type	Permanent Split Capacitor	Starting Method	Across The Line
Poles	6	Rotation	Selective Counterclockwise
Resistance Main	0 Ohms	Mounting	Round - Extended Studs
Motor Orientation	Horizontal	Drive End Bearing	Ball
Opp Drive End Bearing	Ball	Frame Material	Rolled Steel
Shaft Type	Single Special Extension	Overall Length	10.09 in
Frame Length	5.50 in	Shaft Diameter	0.500 in
Shaft Extension	2.56 in	Assembly/Box Mounting	F1 ONLY
Outline Drawing	A-SS404353-550	Connection Drawing	A-EE9057AH



**NOTES:-**  
 1) TOTALLY ENCLOSED MOTOR.  
 2) FULLY GASKETED.  
 3) NAMEPLATE LOC. @ 'A' TO BE READ FROM TERM END.

DASH	XB	C
550	5.69[144.52]	10.09[256.28]
625	6.44[163.57]	10.84[275.33]

DRAWING REVISION B	REVISION BY M. CHATLAPALLI	DATE 01/10/2019
ECO ECO-0159684	APPROVED BY S. MACHARLA	DATE 01/10/2019
ECO DESCRIPTION <b>OUTLINE CONVERSION PROJECT</b>		
<small>COPYRIGHT REGAL BELOIT AMERICA, INC. ALL RIGHTS RESERVED.                  PROPRIETARY AND CONFIDENTIAL INFORMATION - THIS DOCUMENT IS THE PROPERTY OF                  REGAL BELOIT AMERICA, INC. ("OWNER") AND CONTAINS OWNER'S PROPRIETARY                  INFORMATION. ANY PERSON, CORPORATION OR OTHER FIRM RECEIVING IT IS DEEMED,                  BY RECEIVING IT, TO AGREE THAT IT, AND/OR ANY PART OF IT, SHALL NOT BE DISCLOSED                  TO ANY PERSON, CORPORATION OR OTHER ENTITY, DUPLICATED, AND/OR USED, EXCEPT                  AS EXPRESSLY APPROVED IN WRITING IN ADVANCE BY OWNER. THIS DOCUMENT SHALL                  BE RETURNED TO OWNER UPON REQUEST. IT MAY BE SUBJECT TO CERTAIN                  RESTRICTIONS UNDER APPLICABLE EXPORT CONTROL LAWS AND REGULATIONS.</small>		

**TOLERANCES UNLESS OTHERWISE SPECIFIED:**

DEC.	INCH	mm	ANGLE
.X	±0.1	[±2.5]	±7° 30"
.XX	±0.03	[±0.76]	
.XXX	±0.005	[±0.127]	
.XXXX	±0.0005	[±0.0127]	

REMOVE BURRS & BREAK SHARP EDGES: .003/.015 [.076/.381] X 45°  
 CORNER FILLETS: R.02 [.51]  
 MACHINED SURFACES: 200 INCH/mm 5.1  
 mm SHOWN IN [BRACKETS]

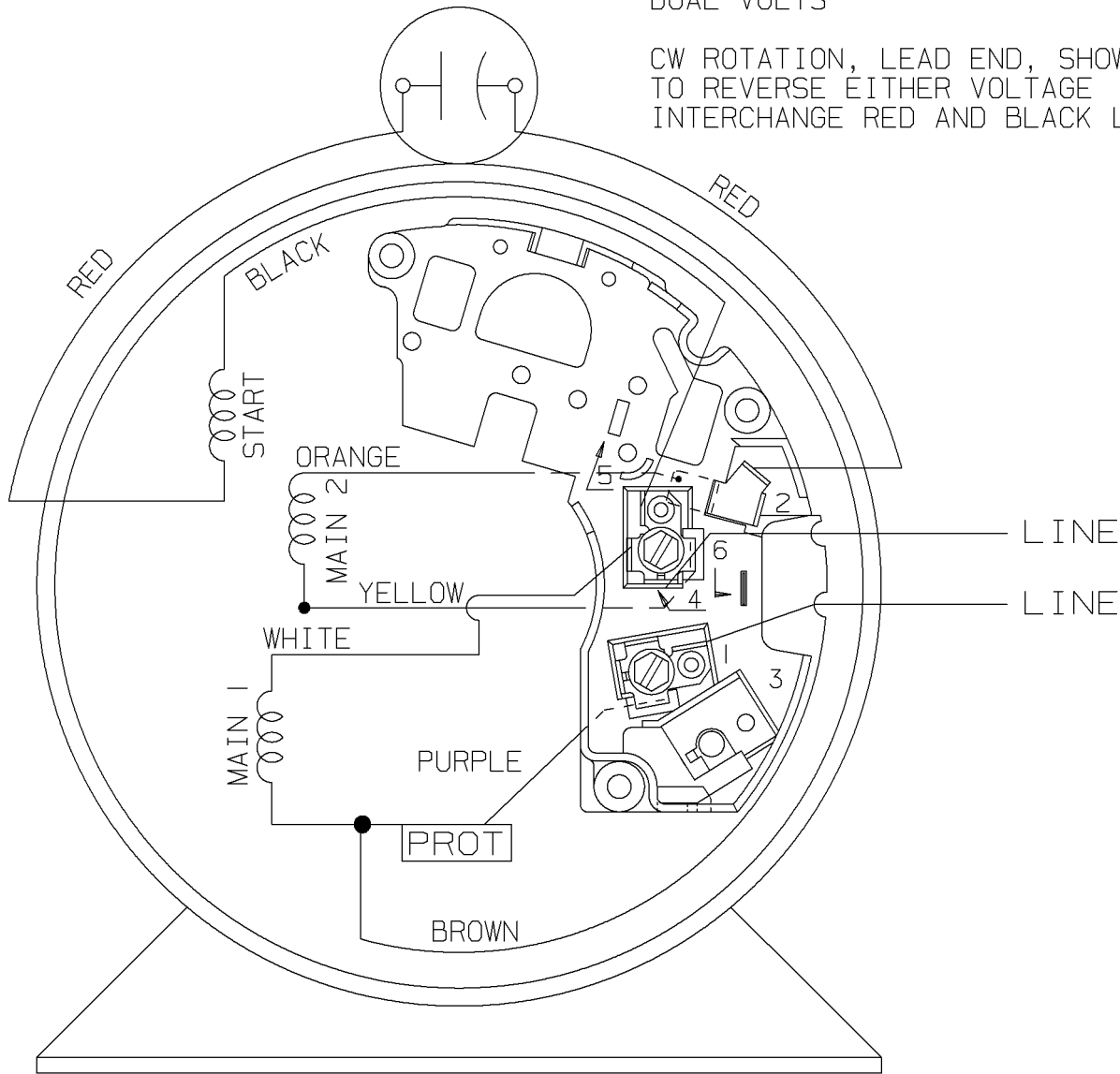
DRAWN BY M. CHATLAPALLI	DATE 01/10/2019
APPROVED BY S. MACHARLA	DATE 1/10/2019
REFERENCE SS75967LN	THIRD ANGLE PROJECTION

<b>REGAL</b> ™ Regal Beloit America, Inc.	
DESCRIPTION <b>OUTLINE</b>	MATERIAL SS75967LN
PROCESS/FINISH	SIZE B
DRAWING NUMBER <b>SS404353</b>	SHEET 1 OF 1

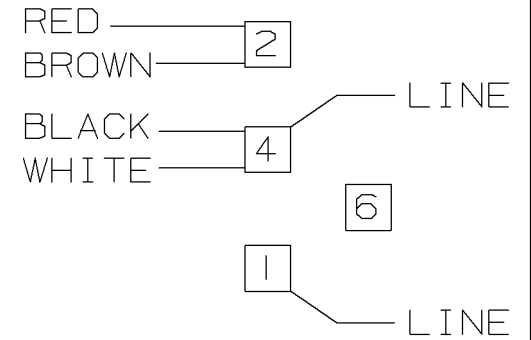
DUAL VOLTS

A- EE9057AH

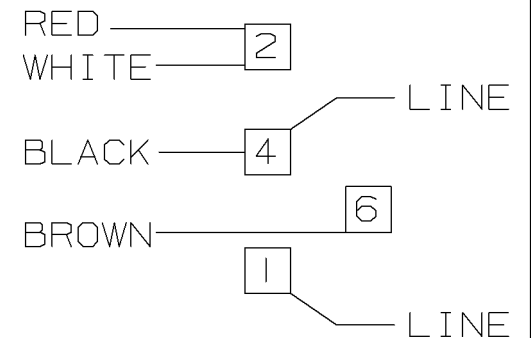
CW ROTATION, LEAD END, SHOWN TO REVERSE EITHER VOLTAGE INTERCHANGE RED AND BLACK LEADS.




LOW VOLTAGE



HIGH VOLTAGE



VIEW OF TERMINAL END

				✓ MAX. SURFACE ROUGHNESS UNLESS NOTED OTHERWISE	UNLESS OTHERWISE SPECIFIED DIMENSIONS ARE IN INCHES TOL. ON XX±    XXX±.005    XXXX±.0005    ANGLES±				
				MATL SPEC	 <b>Regal Beloit America, Inc.</b>			DRAWN BY MH	04-03-1998
				FINISH				CHKD BY ML	04-06-1998
				REFERENCE DRW.				APPD BY TOM	04-27-1998
2	05-09-2025	CHD FROM MARATHON TO REGAL REXNORD LOGO		KVDG	CN 23975-249			DRWG NO A- EE9057AH	
1	04-17-1998	NEW DRAWING		MH					
REV	DATE	CHANGE		NAME	PART NAME CONNECTION DIAGRAM			DRWG NO	

SHOP BOOK

PURCHASED

DISTRIBUTION - WA - LB - WP - LM - BR

CADD FILE NO.

EE9057AH







**REGAL REXNORD CORPORATION**  
TYPICAL PERFORMANCE CURVE for AC MOTOR

Customer

Curve at

230 Volts  
60 HZ  
0.25 HP

HP 0.25

PHASE 1

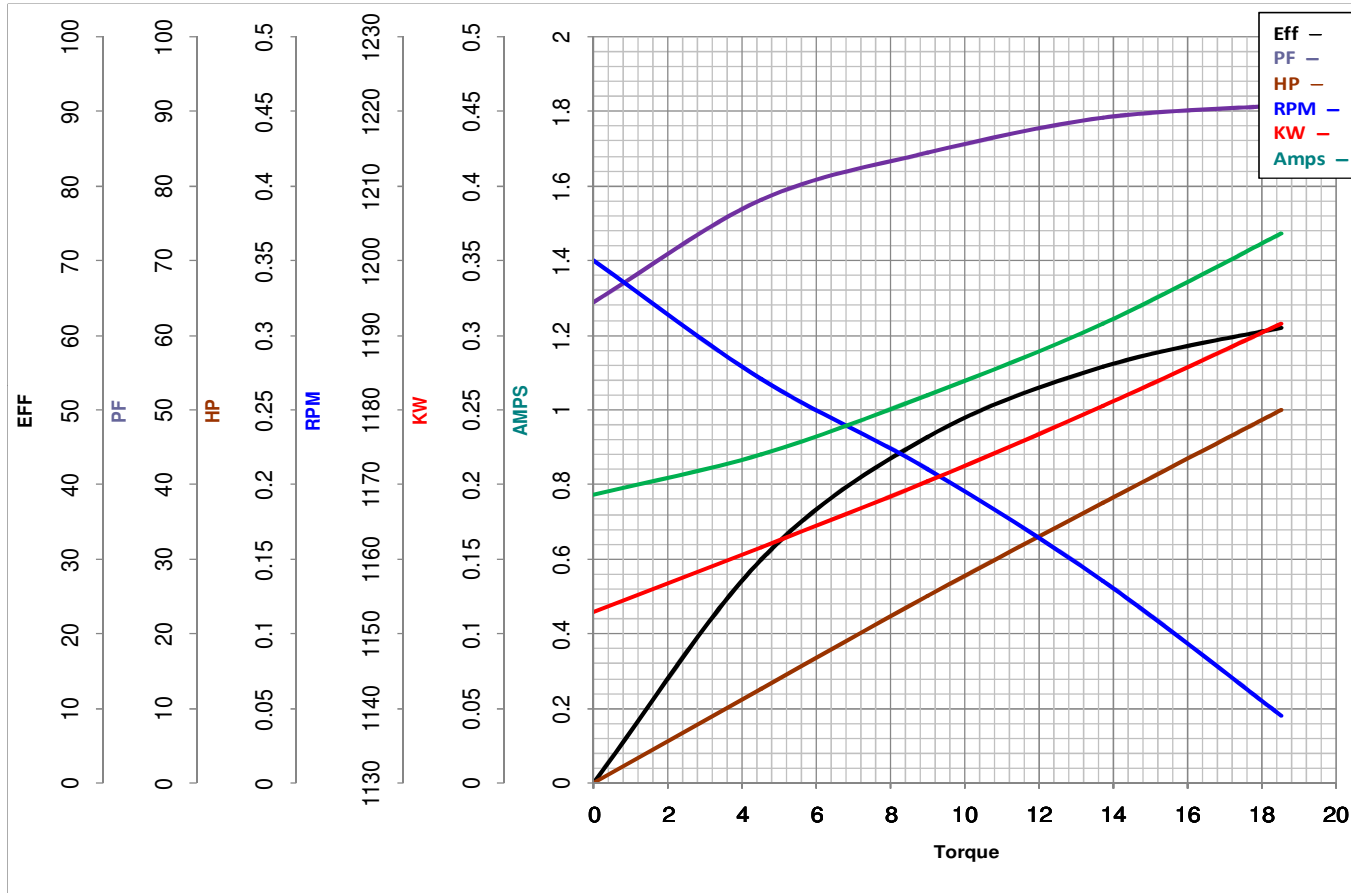
Model No 48A11T2021

VOLTS 115/230

Catalog No X027

HZ 60

RPM 1075



			<b>Torque in Oz.Ft</b>		
<b>FL TORQUE</b>	<u>18.5</u>	<b>Oz.Ft</b>	<b>FL AMPS</b>	<u>3.2/1.6</u>	
<b>BD TORQUE</b>	<u>32.1</u>	<b>Oz.Ft</b>	<b>PU TORQUE</b>	<u>7.0</u>	<b>Oz.Ft</b>
<b>LR TORQUE</b>	<u>8.2</u>	<b>Oz.Ft</b>	<b>LR AMPS</b>	<u>4.5</u>	
<b>WINDING</b>	PE4861760-3		<b>Date</b>	1/9/2019	