

PRODUCT INFORMATION PACKET



Model No: 048A17O155

Catalog No: X017

Fan and Blower Motor, 0.50 HP, 1 Ph, 60 Hz, 208-230 V, 1800 RPM, 48Z Frame, OPAO



Regal and LEESON are trademarks of Regal Rexnord Corporation or one of its affiliated companies.
©2025 Regal Rexnord Corporation, All Rights Reserved. MC017097E



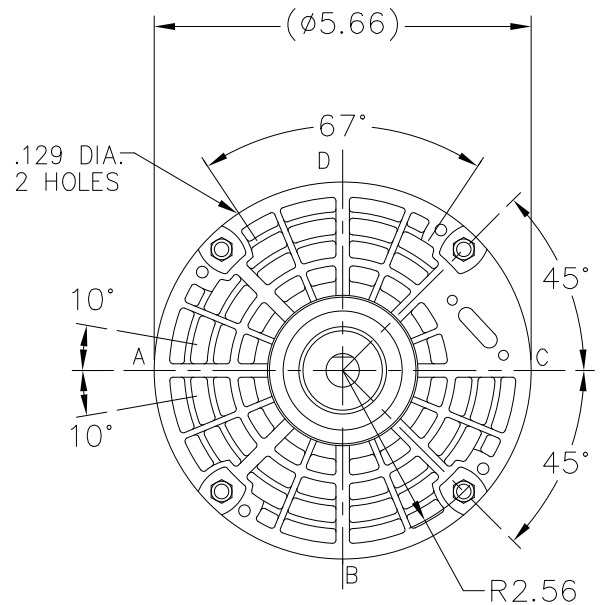
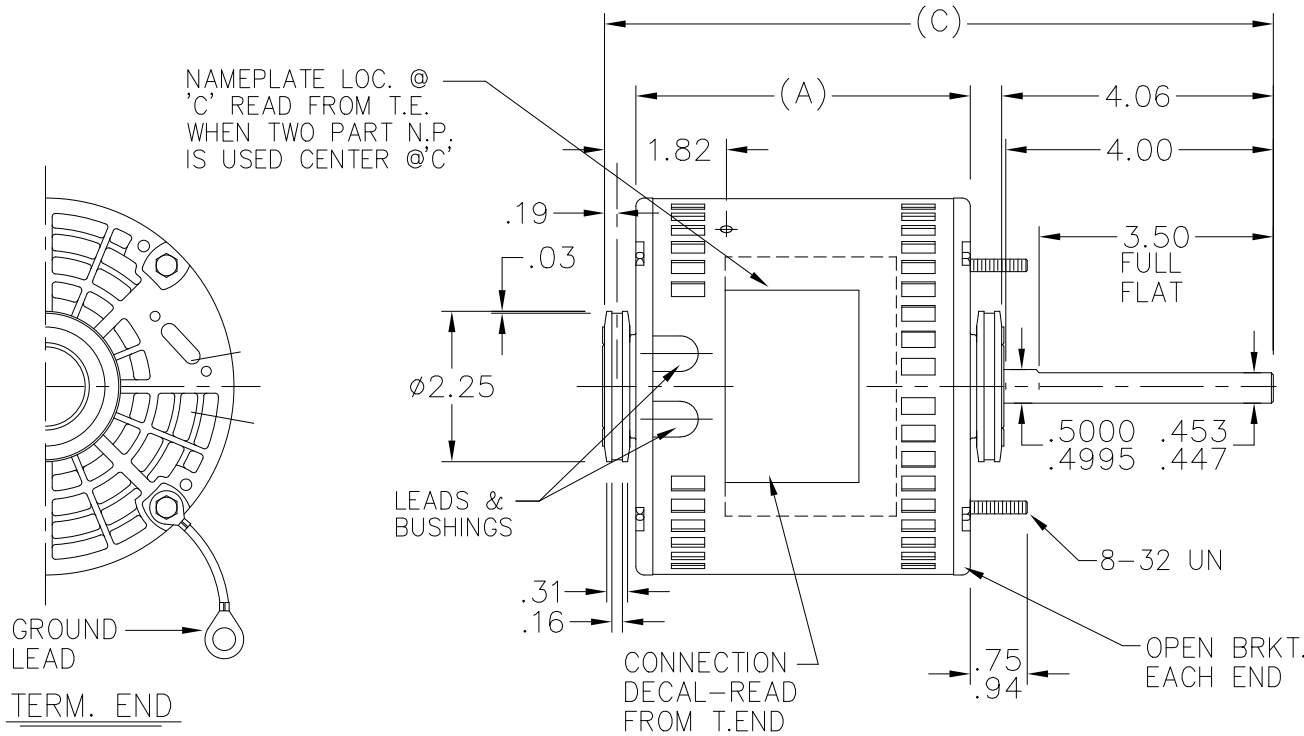


Nameplate Specifications

Phase	1	Output HP	0.50 Hp
Output KW	0.37 kW	Voltage	208-230 V
Speed	1625 rpm	Service Factor	1.0
Frame	48Z	Enclosure	Open Air Over
Thermal Protection	Automatic	Efficiency	72 %
Ambient Temperature	40 °C	Frequency	60 Hz
Current	4.1-4.1 A	Power Factor	87.2
Duty	Continuous	Insulation Class	B
Design Code	NO DESIGN CODE	KVA Code	D
Drive End Bearing Size	6203	Opp Drive End Bearing Size	6203
UL	Recognized	CSA	Y
CE	N	IP Code	10
Number of Speeds	3		

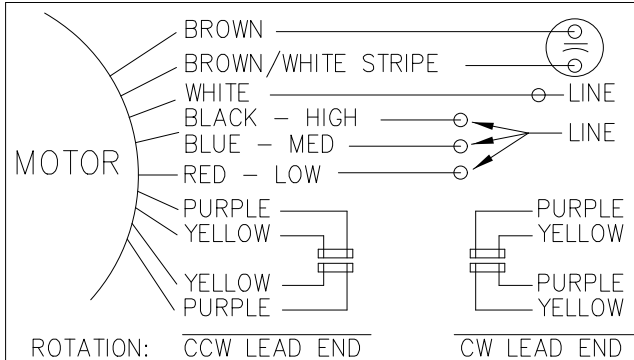
Technical Specifications

Electrical Type	Permanent Split Capacitor	Starting Method	Across The Line
Poles	4	Rotation	Selective Counterclockwise
Mounting	Resilient Ring - Extended Studs	Motor Orientation	Horizontal
Drive End Bearing	Ball	Opp Drive End Bearing	Ball
Frame Material	Rolled Steel	Shaft Type	Single Special Extension
Overall Length	10.25 in	Frame Length	4.75 in
Shaft Diameter	0.500 in	Shaft Extension	4.06 in
Assembly/Box Mounting	F1 ONLY		
Connection Drawing	6906493	Outline Drawing	A-SS403409-475



LEAD DESCRIPTION:

- 1 WHITE, 1 BLACK, 1 BLUE, & 1 RED, LEAD WITH .50 BARE WIRE STRIP. 30.00" LONG
- 2 BROWN LEADS WITH .25 FLAG-TYPE QUICK CONNECTS 30.00" LONG. BROWN/ WHITE MARKED LEAD IS COMMON TO WHITE.
- REVERSING LEADS ARE MOLDED INTO MATING PULL-APART PLUGS. 1 YELLOW & 1 PURPLE LEAD PER PLUG. 5.00" LONG.
- GREEN GROUND LEAD WITH TERM. FOR #10 SCREW 12.00" LONG.



DASH	C	A
375	9.25	4.25
400	9.50	4.50
425	9.75	4.75
475	10.25	5.25
488	10.38	5.38
500	10.50	5.50

			TOLERANCES UNLESS SPECIFIED	
			DEC.	INCHES
			.X	±.1
			.XX	±.02
			.XXX	±.005
01	CHG FROM MARATHON TO RRX TEMPLATE PER ECR-0233451	MD 5/2/24	DS .XXXX	±.0005
NO.	REVISION	BY & DATE	CHK ANG	±7'30"

Regal Rexnord Regal Beloit America, Inc.

TITLE OUTLINE

MAT'L.

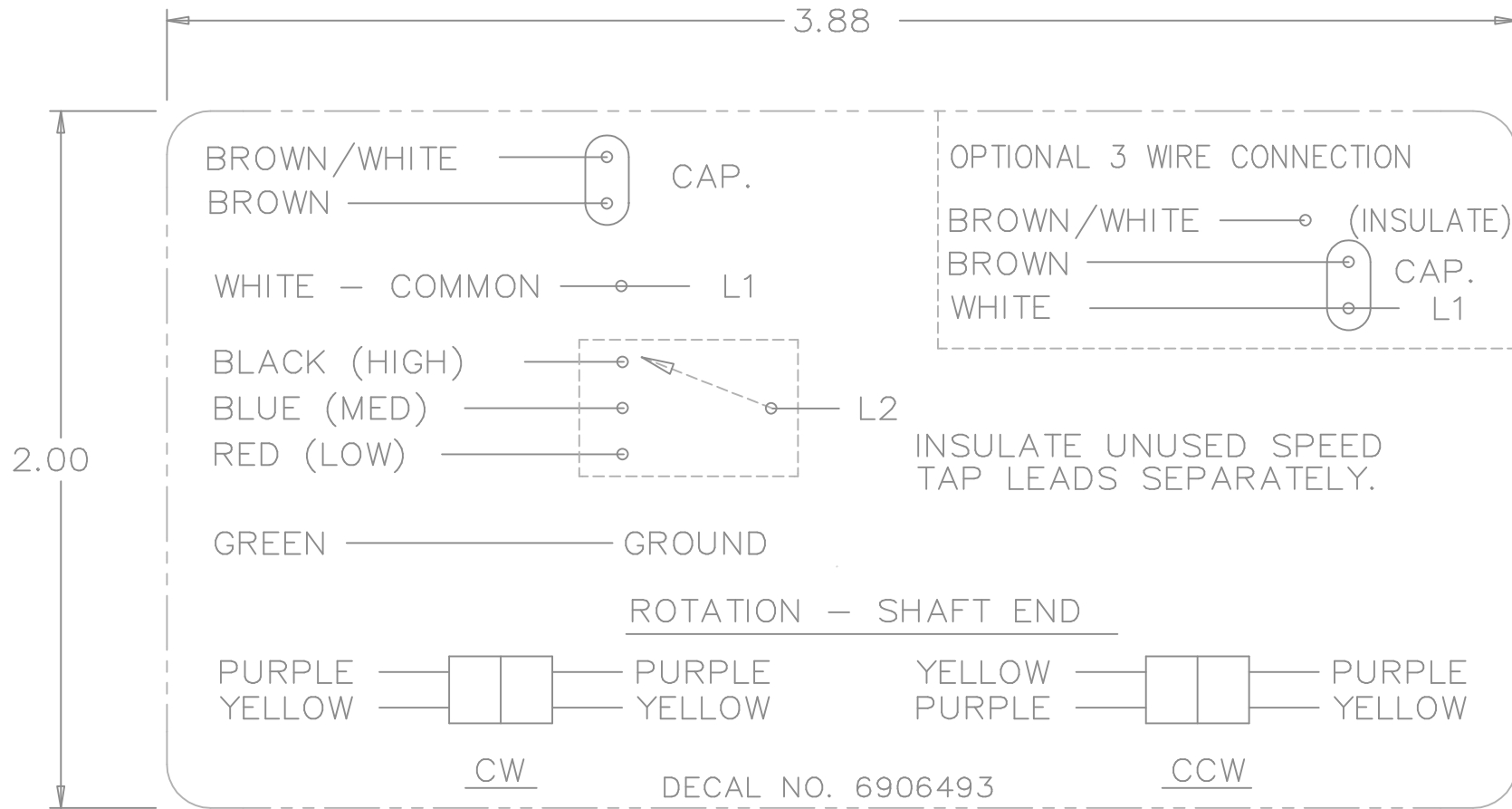
CAD FILE ss403409

DRAWN HLB	05-13-2004
CHK ML	05-13-2004
APPD MJS	05-14-2004
SCALE	3=9
REF	
FMF	MU50817/MU50818
PREV	

THIS DRAWING IN DESIGN AND DETAIL IS OUR PROPERTY AND MUST NOT BE USED EXCEPT IN CONNECTION WITH OUR WORK ALL RIGHTS OF DESIGN AND INVENTION ARE RESERVED THIS IS AN ELECTRONICALLY GENERATED DOCUMENT - DO NOT SCALE THIS PRINT

RFP 05-14-2004
DIST WP

SIZE A DRAWING NO. SS403409 PAGE 1 OF 1 REV. 01



				TOLERANCES UNLESS SPECIFIED		REGAL-BELOIT <i>Motor Technologies</i>	DRAWN MRB 04-16-1998				
				DEC.	INCHES		CHK	ML	04-22-1998		
				.X	±.1		APPD	GK	04-22-1998		
3	REMOVED 'MARATHON ELECTRIC' CN 35106	DRS 05-01-2002	TOM	.XX	±	TITLE CONNECTION DECAL	SCALE	1=1			
2	PART NAME WAS CONNECTION DIAGRAM CN 25669	MRB 04-25-1998		.XXX	±.005		REF				
1	NEW DRAWING CN 25669	MRB 04-22-1998		.XXXX	±.0005	MAT'L.	FMF				
NO.	REVISION	BY & DATE	CHK	ANG	±	FINISH	PREV				
THIS DRAWING IN DESIGN AND DETAIL IS OUR PROPERTY AND MUST NOT BE USED EXCEPT IN CONNECTION WITH OUR WORK ALL RIGHTS OF DESIGN AND INVENTION ARE RESERVED THIS IS AN ELECTRONICALLY GENERATED DOCUMENT - DO NOT SCALE THIS PRINT				RFP	CAD FILE 6906493		SIZE	DRAWING NO.	PAGE	OF	REV.
				DIST	WP		A	6906493			3

** Subject to change without notice.



REGAL REXNORD CORPORATION
TYPICAL PERFORMANCE CURVE for AC MOTOR

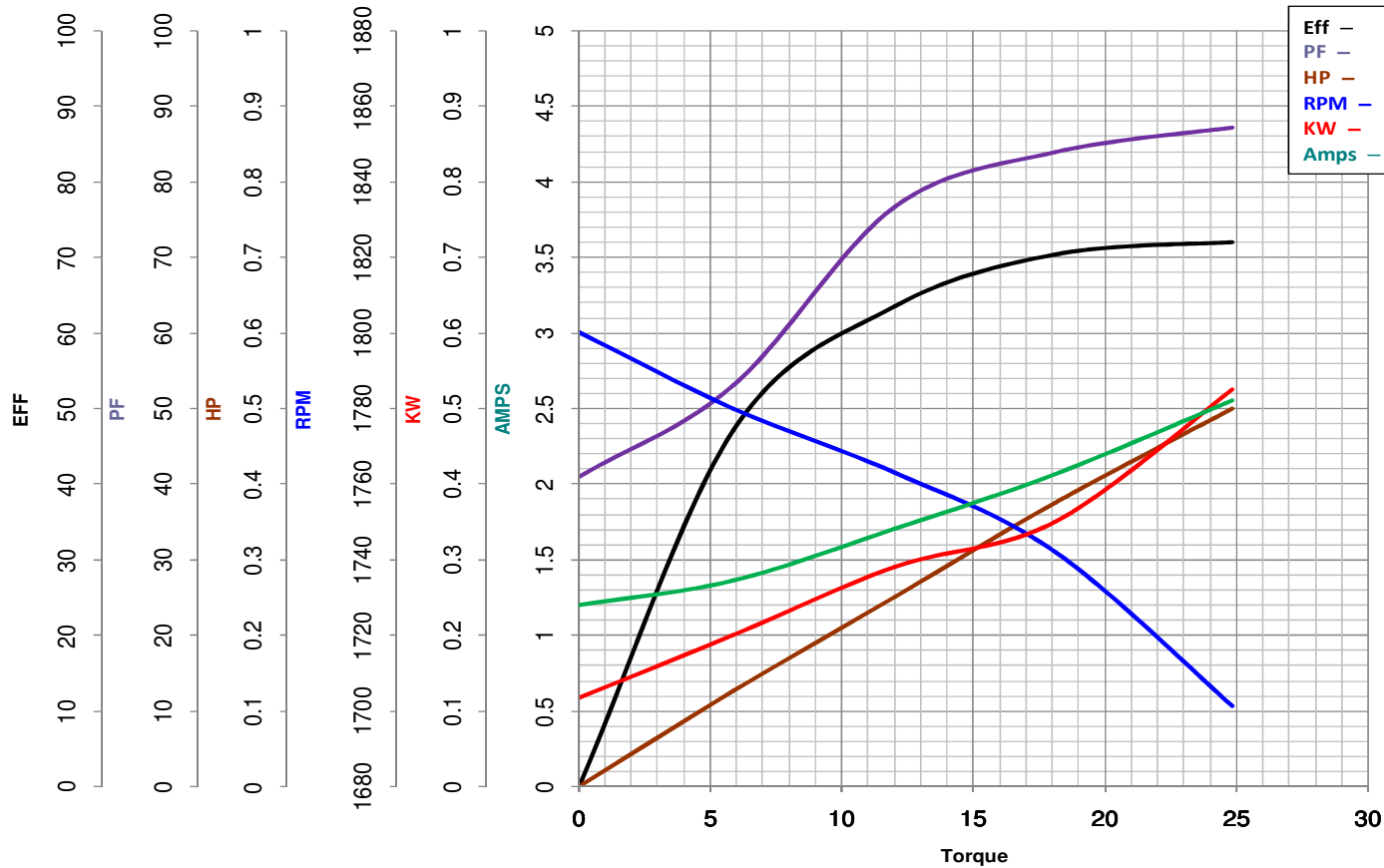
Customer

Curve at 230 Volts HP 0.50 PHASE 1
60 HZ
0.5 HP VOLTS 208-230

Model No 48A17O155

Catalog No X017

HZ 60 RPM 1625



		Torque in Oz.Ft			
FL TORQUE	<u>24.8</u>	Oz.Ft	FL AMPS	<u>4.1-4.1</u>	
BD TORQUE	<u>45.1</u>	Oz.Ft	PU TORQUE	<u>8.3</u>	Oz.Ft
LR TORQUE	<u>8.64</u>	Oz.Ft	LR AMPS	<u>9.59</u>	
WINDING	PE484204-2		Date	1/4/2019	

REV 1 - CHANGED LOGO FROM MARATHON TO LEESON - 3/25/2025