

PRODUCT INFORMATION PACKET



Model No: 048A17T237

Catalog No: X031

General Purpose Farm Duty Motor, 0.33 HP, 1 Ph, 60 Hz, 115/230 V, 1800 RPM, 48Y Frame, TEAO



Regal and LEESON are trademarks of Regal Rexnord Corporation or one of its affiliated companies.

©2025 Regal Rexnord Corporation, All Rights Reserved. MC017097E



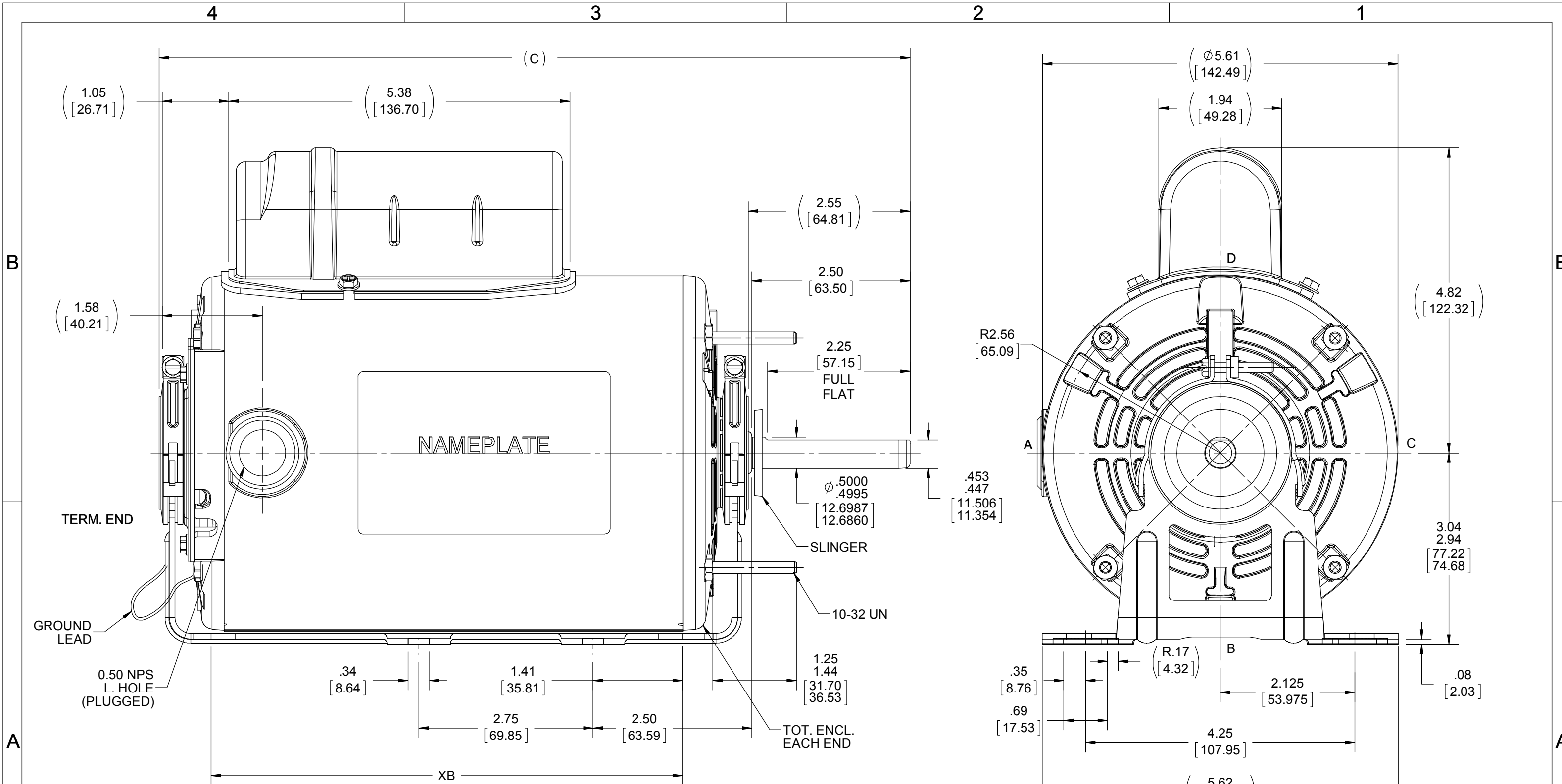


Nameplate Specifications

Phase	1	Output HP	0.33 Hp
Output KW	0.25 kW	Voltage	115/230 V
Speed	1625 rpm	Service Factor	1.0
Frame	48Y	Enclosure	Totally Enclosed Air Over
Thermal Protection	Automatic	Efficiency	66 %
Ambient Temperature	40 °C	Frequency	60 Hz
Current	3.8/1.9 A	Power Factor	96
Duty	Continuous	Insulation Class	B
Design Code	NO DESIGN CODE	KVA Code	D
Drive End Bearing Size	6203	Opp Drive End Bearing Size	6203
UL	Recognized	CSA	Y
CE	N	IP Code	43
Number of Speeds	1		

Technical Specifications

Electrical Type	Permanent Split Capacitor	Starting Method	Across The Line
Poles	4	Rotation	Selective Counterclockwise
Resistance Main	0 Ohms	Mounting	Resilient Base - Extended Studs
Motor Orientation	Horizontal	Drive End Bearing	Ball
Opp Drive End Bearing	Ball	Frame Material	Rolled Steel
Shaft Type	Single Special Extension	Overall Length	11.81 in
Frame Length	7.25 in	Shaft Diameter	0.500 in
Shaft Extension	2.56 in	Assembly/Box Mounting	F1 ONLY
Outline Drawing	A-SS404364-725	Connection Drawing	A-EE9057R



NOTES:-
1) NAMEPLATE LOC.@ "A" READ FROM TERM END.

DRAWING REVISION A	REVISION BY A.SUPPANNAVAR	DATE 02/05/2019
ECO ECO-0161326	APPROVED BY	DATE

ECO DESCRIPTION
OUTLINE CONVERSION PROJECT
COPYRIGHT REGAL BELOIT AMERICA, INC. ALL RIGHTS RESERVED.
PROPRIETARY AND CONFIDENTIAL INFORMATION - THIS DOCUMENT IS THE PROPERTY OF REGAL BELOIT AMERICA, INC. ("OWNER") AND CONTAINS OWNER'S PROPRIETARY INFORMATION. ANY PERSON, CORPORATION OR OTHER FIRM RECEIVING IT IS DEEMED, BY RECEIVING IT, TO AGREE THAT IT, AND/OR ANY PART OF IT, SHALL NOT BE DISCLOSED TO ANY PERSON, CORPORATION OR OTHER ENTITY, DUPLICATED, AND/OR USED, EXCEPT AS EXPRESSLY APPROVED IN WRITING IN ADVANCE BY OWNER. THIS DOCUMENT SHALL BE RETURNED TO OWNER UPON REQUEST. IT MAY BE SUBJECT TO CERTAIN RESTRICTIONS UNDER APPLICABLE EXPORT CONTROL LAWS AND REGULATIONS.

TOLERANCES UNLESS OTHERWISE SPECIFIED:
DEC. INCH mm ANGLE
.X ±0.1 [±2.5] ±7° 30"
.XX ±0.03 [±0.76]
.XXX ±0.005 [±0.127]
.XXXX ±0.0005 [±0.0127]
REMOVE BURRS & BREAK SHARP EDGES: .003/.015 [.076/.381] X 45°
CORNER FILLETS: R.02 [.51]
MACHINED SURFACES: 200 INCH/mm 5.1
mm SHOWN IN [BRACKETS]

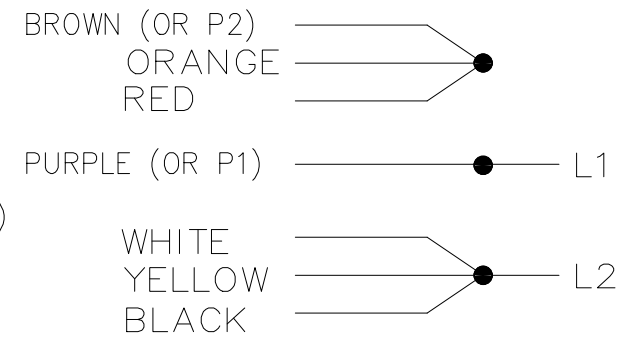
DRAWN BY A.SUPPANNAVAR	DATE 02/05/2019
APPROVED BY D.SURYAWANSHI	DATE 02/06/2019
REFERENCE SS75578	THIRD ANGLE PROJECTION

REGAL ™ Regal Beloit America, Inc.	
DESCRIPTION OUTLINE	PROCESS/FINISH
MATERIAL	SIZE B
DRAWING NUMBER SS404364	SHEET 1 OF 1

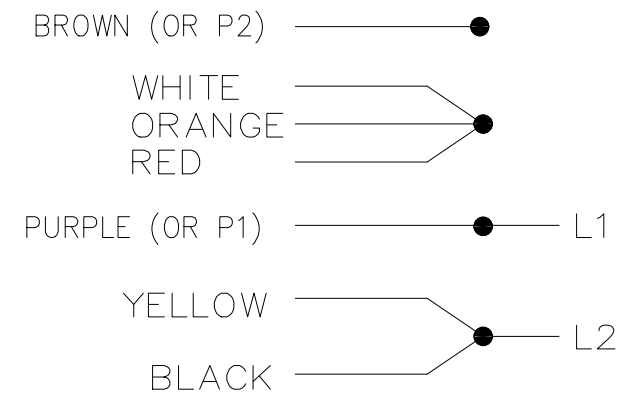
DASH	XB	C
725	7.44 [188.98]	11.85 [300.99]

DUAL VOLTAGE MOTOR
PERMANENT SPLIT CAPACITOR
WITH OVERLOAD PROTECTION

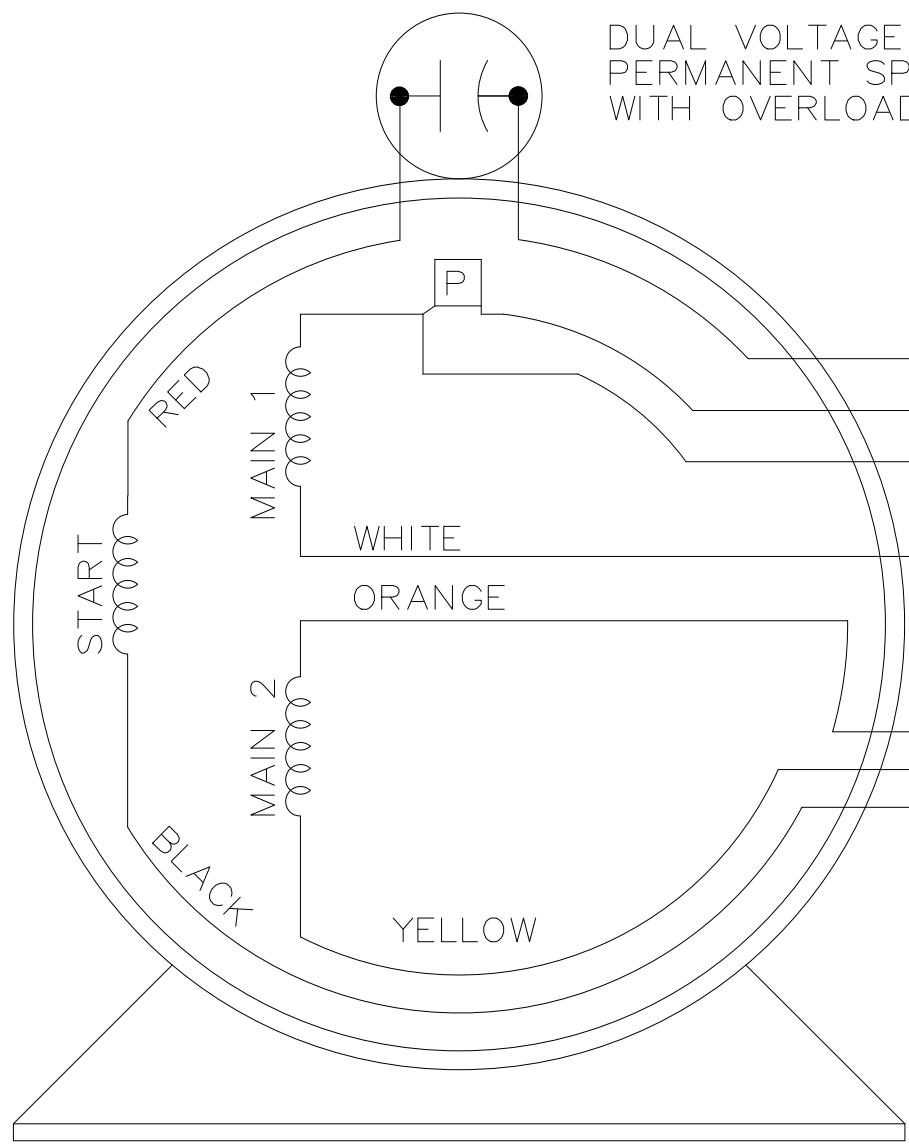
LOW VOLTAGE
CCW ROTATION



HIGH VOLTAGE
CCW ROTATION



TO REVERSE ROTATION, EITHER
VOLTAGE, INTERCHANGE RED WITH BLACK



VIEW OF TERMINAL END

DRAWING REVISION 4	REVISION BY KVDG	REV DATE/ DATE 05/06/2025
REQUEST NUMBER ECR-0242555	APPROVED BY DS	DATE 05/06/2025

REQUEST NUMBER DESCRIPTION
UPDATED THE DRAWING TO RRX TEMPLATE.

COPYRIGHT (PER REVISION DATE) REGAL BELOIT AMERICA, INC. ALL RIGHTS RESERVED. PROPRIETARY AND CONFIDENTIAL INFORMATION - THIS DOCUMENT IS THE PROPERTY OF REGAL BELOIT AMERICA, INC. (OWNER) AND CONTAINS OWNER'S PROPRIETARY INFORMATION. ANY PERSON, CORPORATION OR OTHER FIRM RECEIVING IT IS DEEMED, BY RECEIVING IT, TO AGREE THAT IT, AND/OR ANY PART OF IT, SHALL NOT BE DISCLOSED TO ANY PERSON, CORPORATION OR OTHER ENTITY, DUPLICATED, AND/OR USED, EXCEPT AS EXPRESSLY APPROVED IN WRITING IN ADVANCE BY OWNER. THIS DOCUMENT SHALL BE RETURNED TO OWNER UPON REQUEST. IT MAY BE SUBJECT TO CERTAIN RESTRICTIONS UNDER APPLICABLE EXPORT CONTROL LAWS AND REGULATIONS.

TOLERANCES (EXCEPT AS NOTED):
DEC. INCH mm ANGLE
.X ±0.1 [±3] ±0.5°
.XX ±0.01 [±0.3]
.XXX ±0.005 [±0.13]
.XXXX ±0.0005 [±0.013]
REMOVE BURRS & BREAK SHARP
EDGES: .003/.015 [.08/.38] X 45
CORNER FILLETS: R.02 [.5]
MACHINED SURFACES: 125/ 3.2/
INCH mm

mm DIMENSIONS IN [BRACKETS]
ARE FOR REFERENCE ONLY

DRAWN BY RM
DATE 08-27-1991
APPROVED BY GK
DATE 09-30-1991
REFERENCE
THIRD ANGLE PROJECTION

Regal Rexnord Regal Beloit America, Inc.	
DESCRIPTION CONNECTION DIAGRAM	
MAT'L	PROCESS/FINISH
SIZE B	DRAWING NUMBER A-EE9057R
SHEET 1 OF 1	

** Subject to change without notice.



REGAL REYNOLD CORPORATION
TYPICAL PERFORMANCE CURVE for AC MOTOR

Customer

Curve at

230 Volts
60 HZ
0.33 HP

HP 0.33

PHASE 1

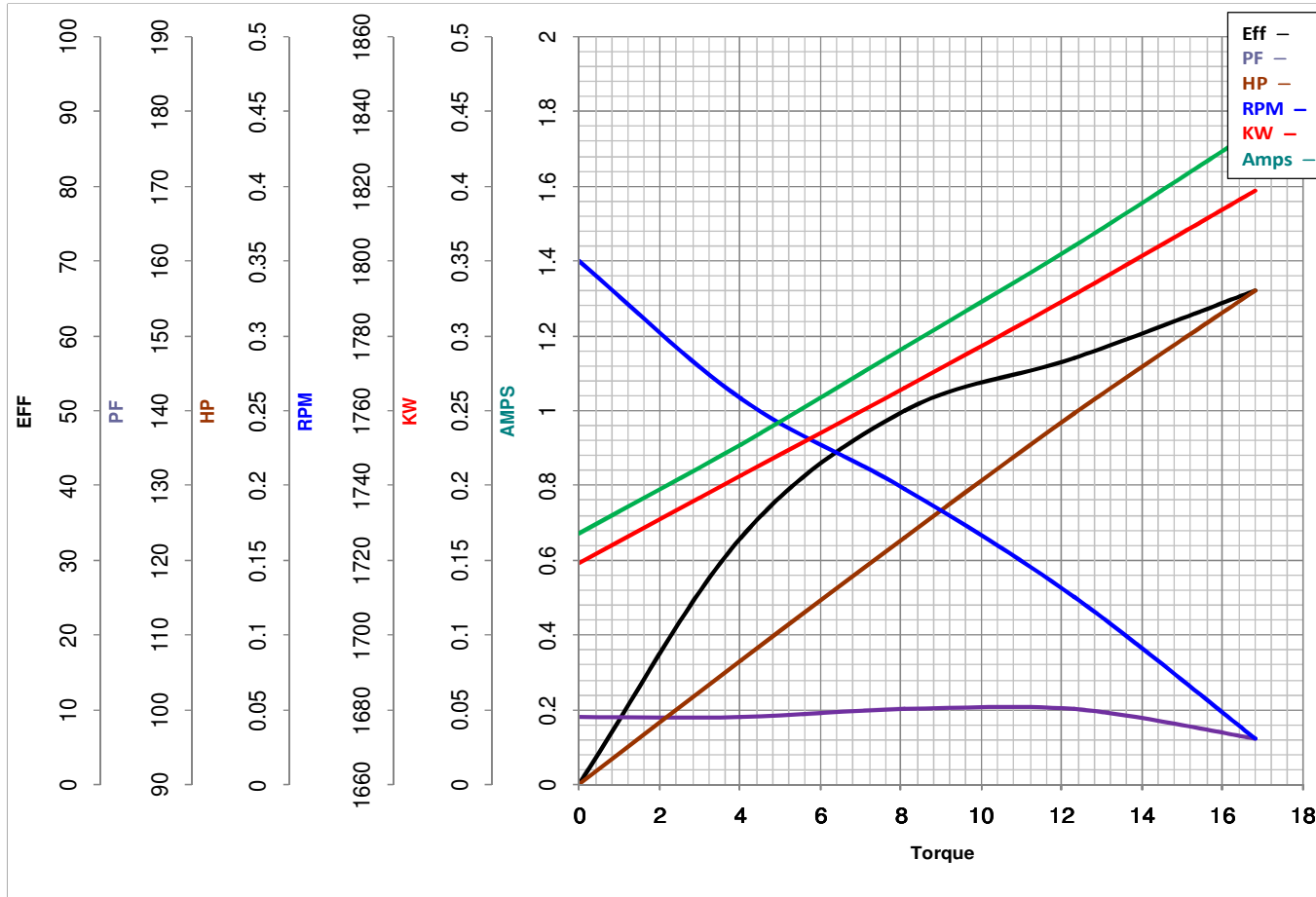
Model No 48A17T237

VOLTS 115/230

Catalog No X031

HZ 60

RPM 1625



		Torque in Oz.Ft	
FL TORQUE	<u>16.8</u> Oz.Ft	FL AMPS	<u>3.8/1.9</u>
BD TORQUE	<u>30.2</u> Oz.Ft	PU TORQUE	<u>9.8</u> Oz.Ft
LR TORQUE	<u>11.4</u> Oz.Ft	LR AMPS	<u>5.71</u>
WINDING	PE484304-3	Date	1/4/2019