

PRODUCT INFORMATION PACKET



Model No: 048S17D2086

Catalog No: D143

Fan and Blower Motor, 0.33 HP, 1 Ph, 60 Hz, 115 V, 1800 RPM, 48 Frame, DP



Regal and LEESON are trademarks of Regal Rexnord Corporation or one of its affiliated companies.

©2025 Regal Rexnord Corporation, All Rights Reserved. MC017097E





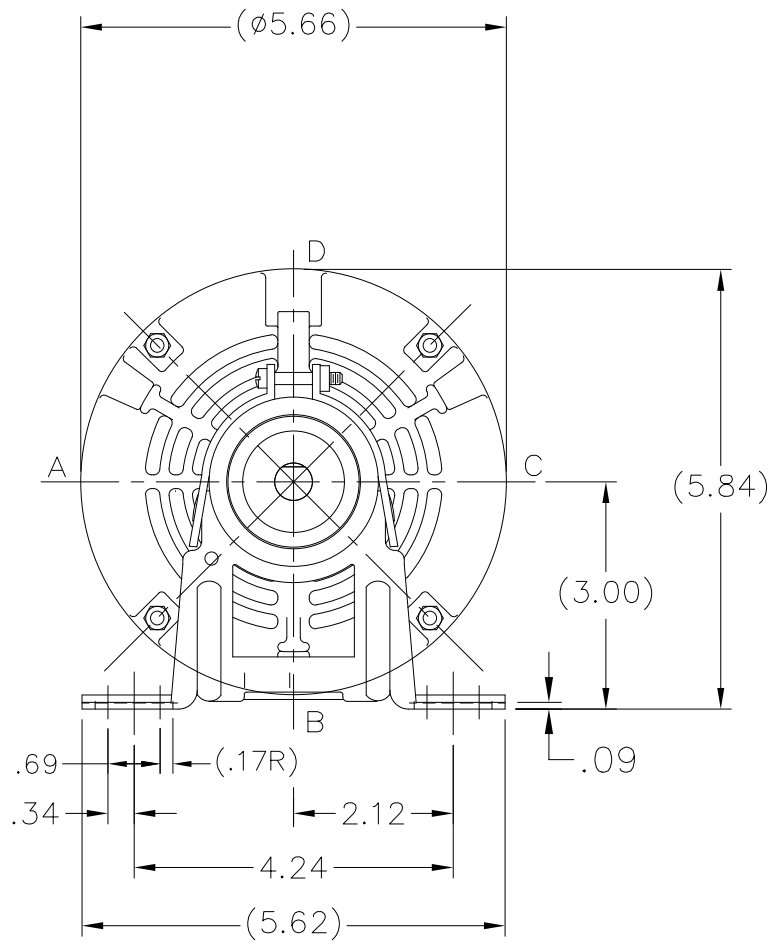
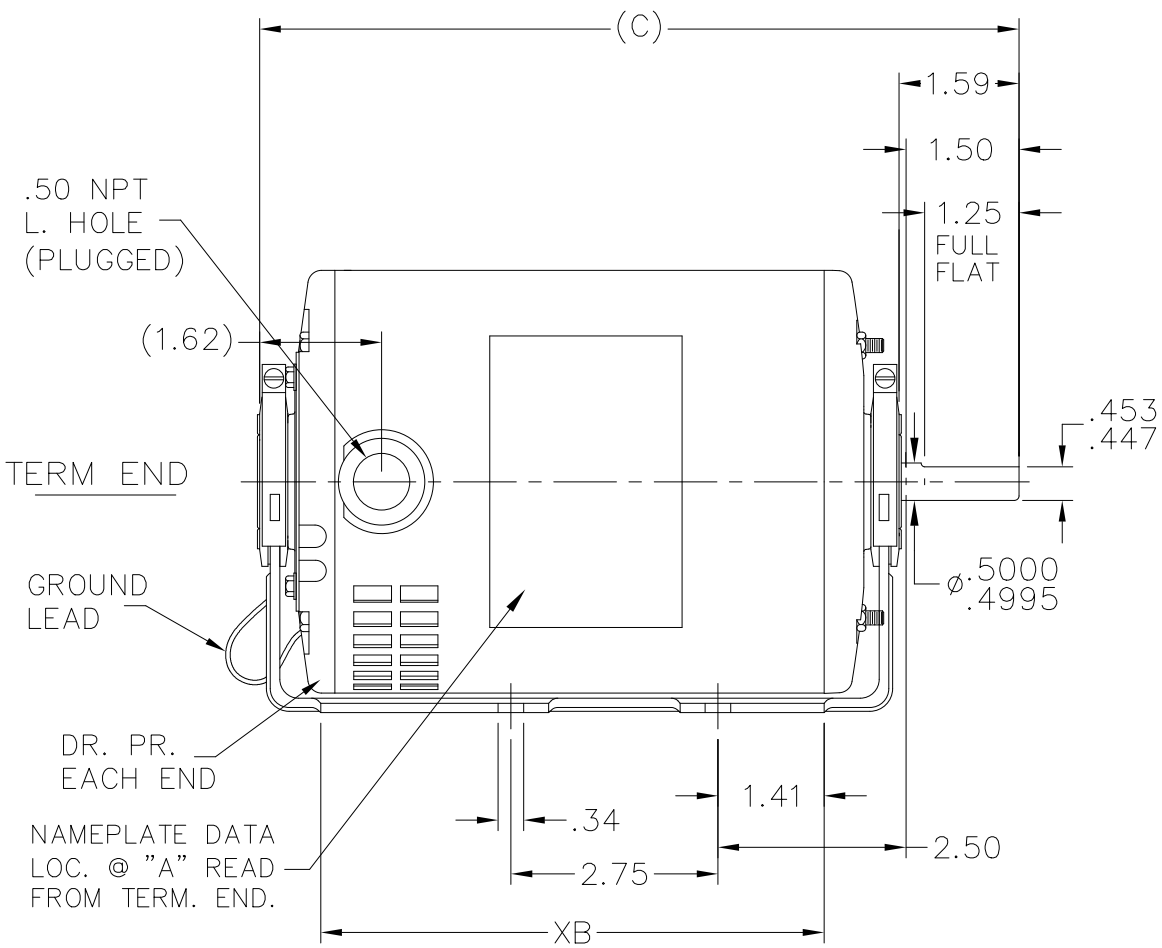
Nameplate Specifications

Phase	1	Output HP	0.33 Hp
Output KW	0.25 kW	Voltage	115 V
Speed	1725 rpm	Service Factor	1.35
Frame	48	Enclosure	Drip Proof
Thermal Protection	Automatic	Efficiency	62 %
Ambient Temperature	40 °C	Frequency	60 Hz
Current	6.1 A	Power Factor	61.5
Duty	Continuous	Insulation Class	B
Design Code	NO DESIGN CODE	KVA Code	M
Drive End Bearing Size	6203	Opp Drive End Bearing Size	6203
UL	Recognized	CSA	Y
CE	N	IP Code	22
Number of Speeds	1		

Technical Specifications

Electrical Type	Split Phase	Starting Method	Across The Line
Poles	4	Rotation	Selective Counterclockwise
Resistance Main	0 Ohms	Mounting	Resilient Base
Motor Orientation	Horizontal	Drive End Bearing	Ball
Opp Drive End Bearing	Ball	Frame Material	Rolled Steel
Shaft Type	NEMA 48	Overall Length	9.34 in
Frame Length	5.75 in	Shaft Diameter	0.500 in
Shaft Extension	1.59 in	Assembly/Box Mounting	F1 ONLY
Outline Drawing	A-SS75097-575	Connection Drawing	A-EE7195

This is an uncontrolled document once printed or downloaded and is subject to change without notice. Date Created:08/07/2025



DASH	FR.	C	XB		DASH	FR.	C	XB	
550	48	9.09	5.69	06-25-2007	625	48	9.84	6.44	
575	48	9.34	5.94		650	48	10.09	6.69	06-25-2007
600	48	9.59	6.19		675	48	10.34	6.94	

TOLERANCES UNLESS SPECIFIED

DEC.	INCHES
.X	±.1
.XX	±.03
.XXX	±.005
.XXXX	±.0005
ANG	±7'30"



Regal Beloit America, Inc.

NO.	REVISION	BY & DATE	CHK	ANG	FINISH
03	CHG FROM MARATHON TO RRX TEMPLATE PER ECR-0233452	MD 4/30/24	DS	.XX	±.03
02	REDRAWN ON AUTOCAD. CN41440.	NB 06-26-2007		.XXX	±.005
01	NEW DRAWING. 3753603	RM 11-12-1990		.XXXX	±.0005

TITLE	OUTLINE
	48 FR.
MAT'L.	
CAD FILE	ss75097

DRAWN	RM 11-12-1990
CHK	ML 11-13-1990
APPD	TG 11-13-1990
SCALE	3=8
REF	SS79518
FMF	
PREV	

THIS DRAWING IN DESIGN AND DETAIL IS OUR PROPERTY AND MUST NOT BE USED EXCEPT IN CONNECTION WITH OUR WORK ALL RIGHTS OF DESIGN AND INVENTION ARE RESERVED THIS IS AN ELECTRONICALLY GENERATED DOCUMENT - DO NOT SCALE THIS PRINT

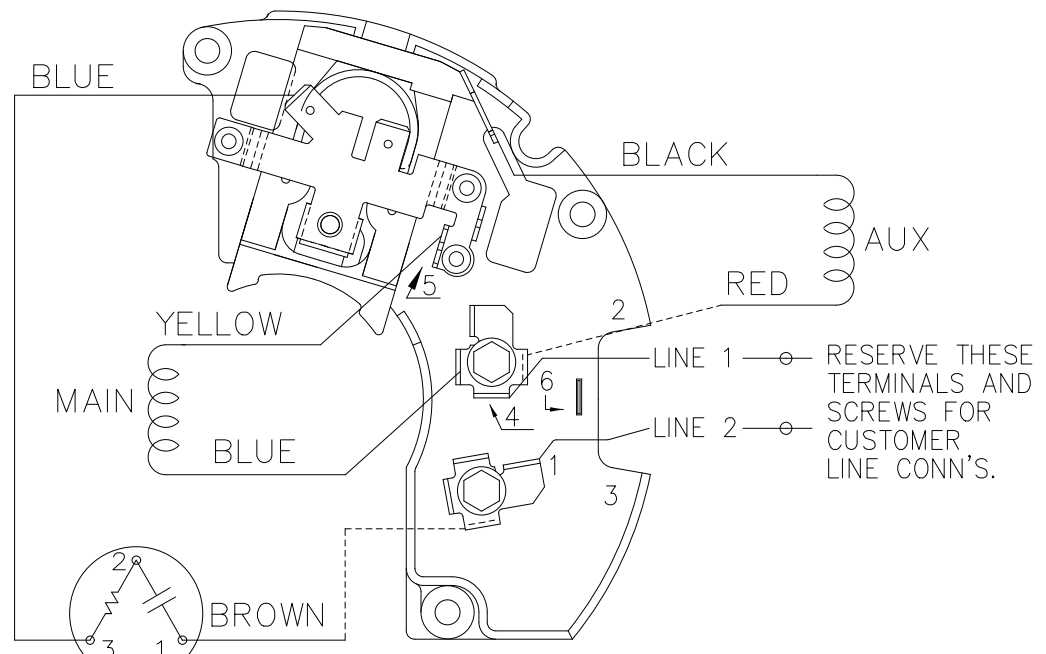
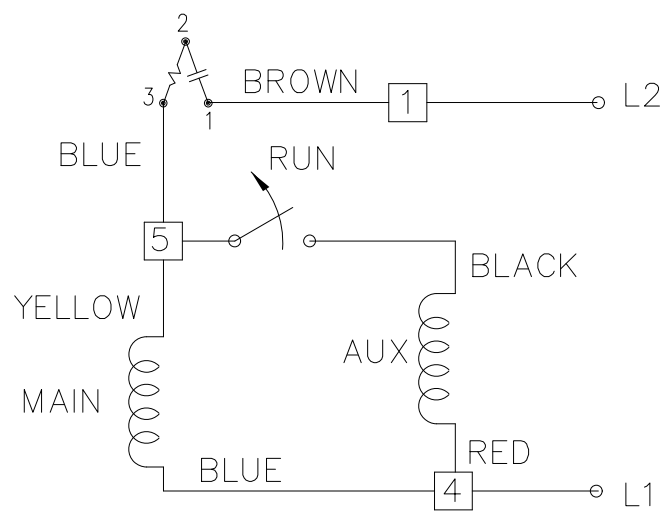
RFP	
DIST	WP

SIZE	A
DRAWING NO.	SS75097
PAGE	3 of 6
OF	

REV.	03
------	----

4 3 2 1

SINGLE VOLTAGE – SPLIT PHASE
REVERSIBLE ON TERM BOARD
WITH OVERLOAD PROTECTION



RESERVE THESE
TERMINALS AND
SCREWS FOR
CUSTOMER
LINE CONN'S.

VIEWING TERMINAL END

C.C.W. ROTATION SHOWN.

FOR C.W. ROTATION INTERCHANGE
YELLOW & BLUE LEADS ON TERM 5 & 4.

DASH LINES INDICATE LEADS CONNECTED
TO MOTOR SIDE OF SWITCH.

DRAWING REVISION 06	REVISION BY KVDG	REV DATE/ DATE 05/06/2025	TOLERANCES (EXCEPT AS NOTED): DEC. INCH mm ANGLE .X ±0.1 [±3] ±0.5° .XX ±0.01 [±0.3] .XXX ±0.005 [±0.13] .XXXX ±0.0005 [±0.013]	DRAWN BY ML	Regal Beloit America, Inc.		
REQUEST NUMBER ECR-0242555	APPROVED BY DS	DATE 05/06/2025	REMOVE BURRS & BREAK SHARP EDGES: .003/.015 [.08/.38] X 45 CORNER FILLETS: R.02 [.5] MACHINED SURFACES: 125/ 3.2/ INCH mm	DATE 01-27-1988			
REQUEST NUMBER DESCRIPTION UPDATED THE DRAWING TO RRX TEMPLATE.				APPROVED BY DRN	DESCRIPTION CONNECTION DIAGRAM		
COPYRIGHT (PER REVISION DATE) REGAL BELOIT AMERICA, INC. ALL RIGHTS RESERVED. PROPRIETARY AND CONFIDENTIAL INFORMATION - THIS DOCUMENT IS THE PROPERTY OF REGAL BELOIT AMERICA, INC. (OWNER) AND CONTAINS OWNER'S PROPRIETARY INFORMATION. ANY PERSON, CORPORATION OR OTHER FIRM RECEIVING IT IS DEEMED, BY RECEIVING IT, TO AGREE THAT IT, AND/OR ANY PART OF IT, SHALL NOT BE DISCLOSED TO ANY PERSON, CORPORATION OR OTHER ENTITY, DUPLICATED, AND/OR USED, EXCEPT AS EXPRESSLY APPROVED IN WRITING IN ADVANCE BY OWNER. THIS DOCUMENT SHALL BE RETURNED TO OWNER UPON REQUEST. IT MAY BE SUBJECT TO CERTAIN RESTRICTIONS UNDER APPLICABLE EXPORT CONTROL LAWS AND REGULATIONS.				DATE 03-11-1988	48 FR. - SINGLE VOLTAGE REVERSIBLE		
				REFERENCE	MAT'L	PROCESS/FINISH	
			mm DIMENSIONS IN [BRACKETS] ARE FOR REFERENCE ONLY	THIRD ANGLE PROJECTION	SIZE B	DRAWING NUMBER EE7195	SHEET 1 OF 1

4 3 2 1



REGAL REXNORD CORPORATION
TYPICAL PERFORMANCE CURVE for AC MOTOR

Customer

Curve at

115 Volts
60 HZ
0.33 HP

HP 0.33

PHASE 1

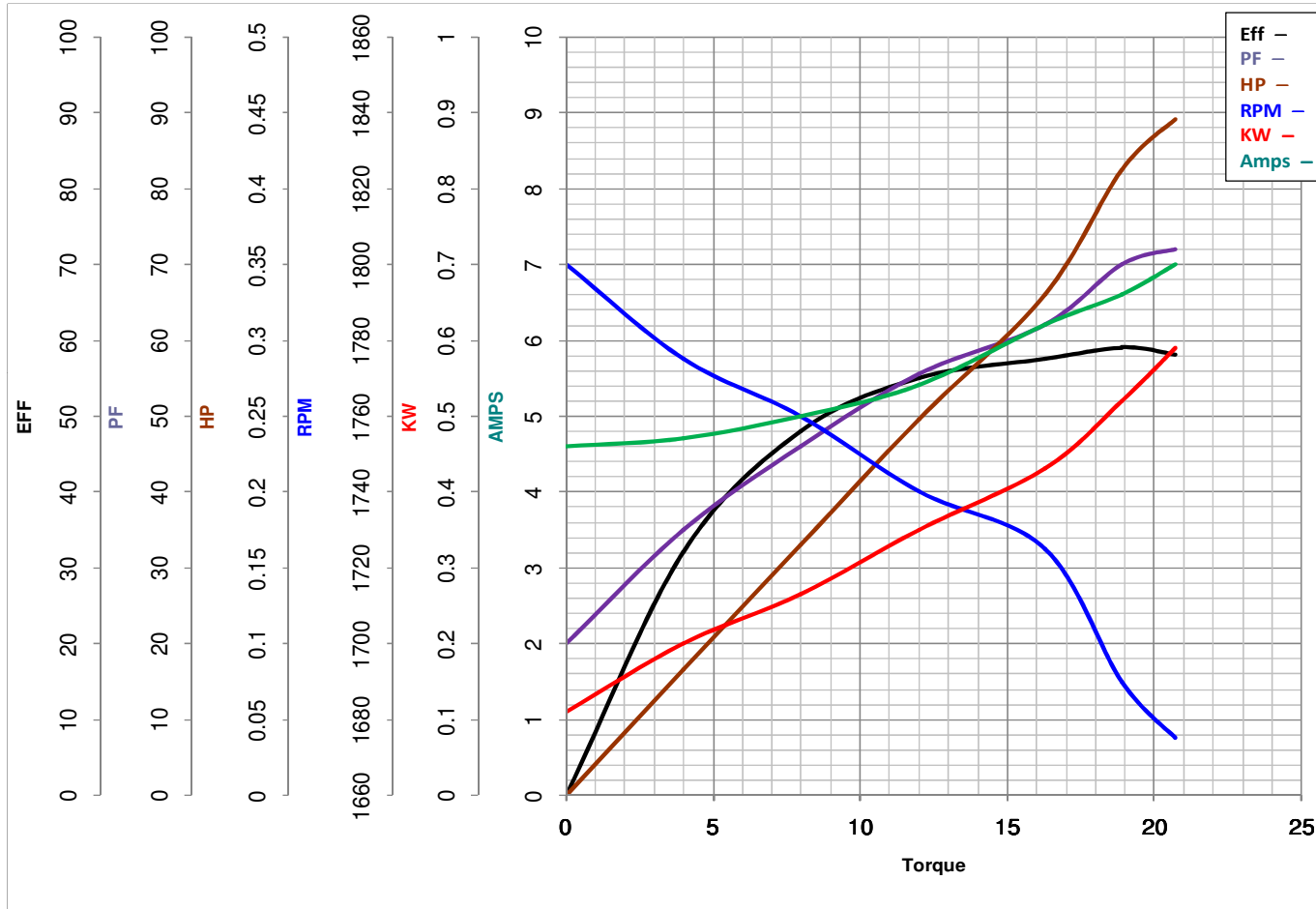
Model No 48S17D2086

VOLTS 115

Catalog No D143

HZ 60

RPM 1725



Torque in Oz.Ft

FL TORQUE 16.3 Oz.Ft
BD TORQUE 36.9 Oz.Ft
LR TORQUE 22.9 Oz.Ft

FL AMPS 6.1
PU TORQUE 34.9 Oz.Ft
LR AMPS 31

WINDING SE484121-1

Date 1/7/2019