

PRODUCT INFORMATION PACKET



Model No: 048S17D2104

Catalog No: S126

General Purpose Motor, 0.25 HP, 1 Ph, 60 Hz, 115 V, 1800 RPM, 48Z Frame, DP



Regal and LEESON are trademarks of Regal Rexnord Corporation or one of its affiliated companies.
©2025 Regal Rexnord Corporation, All Rights Reserved. MC017097E





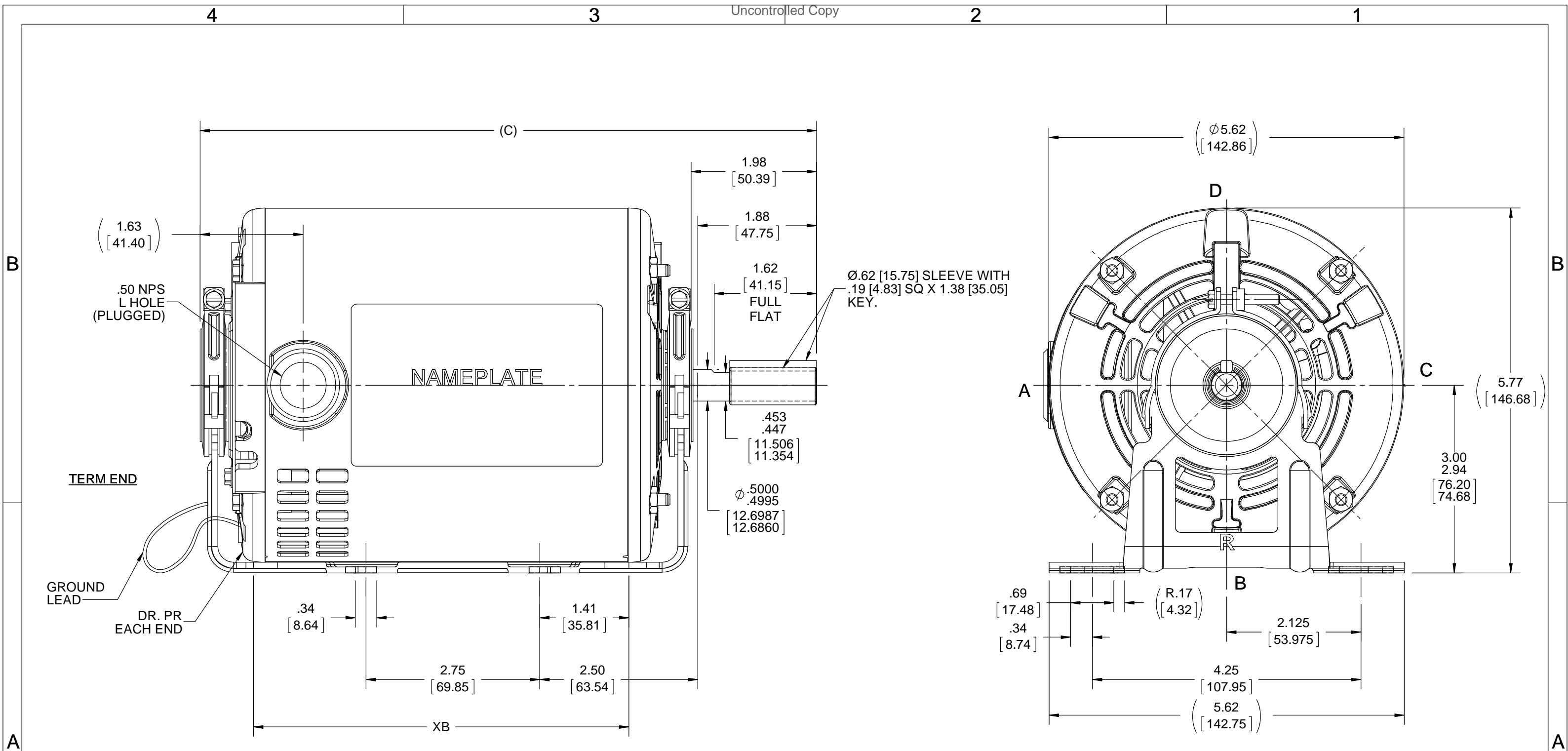
Nameplate Specifications

Phase	1	Output HP	0.25 Hp
Output KW	0.19 kW	Voltage	115 V
Speed	1725 rpm	Service Factor	1.0
Frame	48Z	Enclosure	Drip Proof
Thermal Protection	Automatic	Efficiency	52.5 %
Ambient Temperature	40 °C	Frequency	60 Hz
Current	5.3 A	Power Factor	58.7
Duty	Continuous	Insulation Class	B
Design Code	NO DESIGN CODE	KVA Code	S
Drive End Bearing Size	6203	Opp Drive End Bearing Size	6203
UL	Recognized	CSA	Y
CE	N	IP Code	22
Number of Speeds	1		

Technical Specifications

Electrical Type	Split Phase	Starting Method	Across The Line
Poles	4	Rotation	Selective Counterclockwise
Resistance Main	0 Ohms	Mounting	Resilient Base
Motor Orientation	Horizontal	Drive End Bearing	Ball
Opp Drive End Bearing	Ball	Frame Material	Rolled Steel
Shaft Type	Single Special Extension	Overall Length	9.72 in
Frame Length	5.75 in	Shaft Diameter	0.500 in
Shaft Extension	1.97 in	Assembly/Box Mounting	F1 ONLY
Connection Drawing	A-EE7195	Outline Drawing	A-SS404336-575

This is an uncontrolled document once printed or downloaded and is subject to change without notice. Date Created:08/07/2025

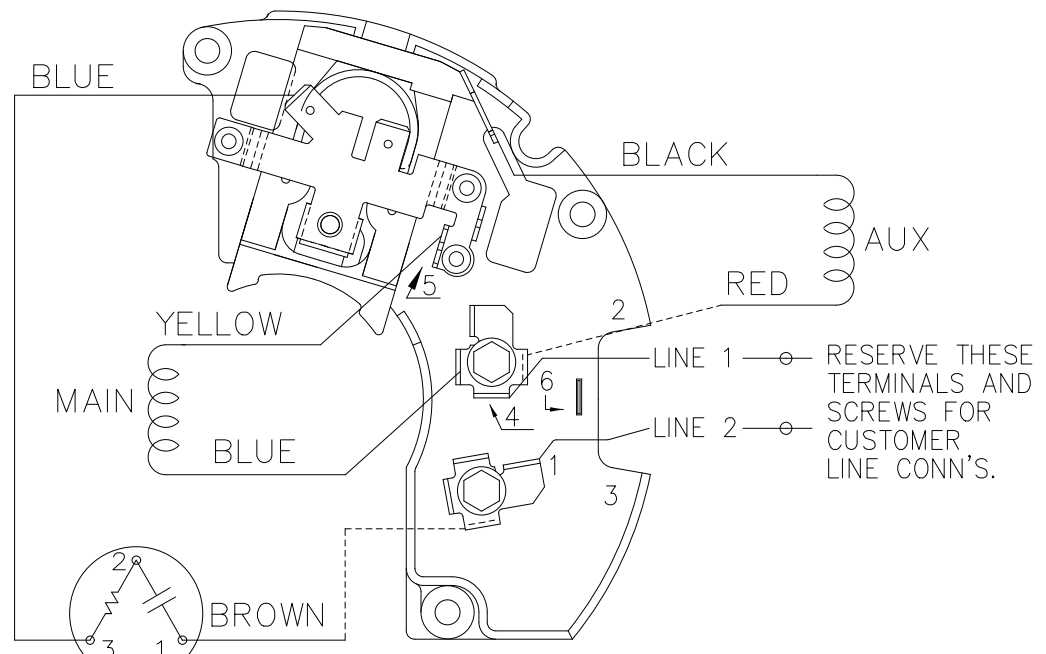
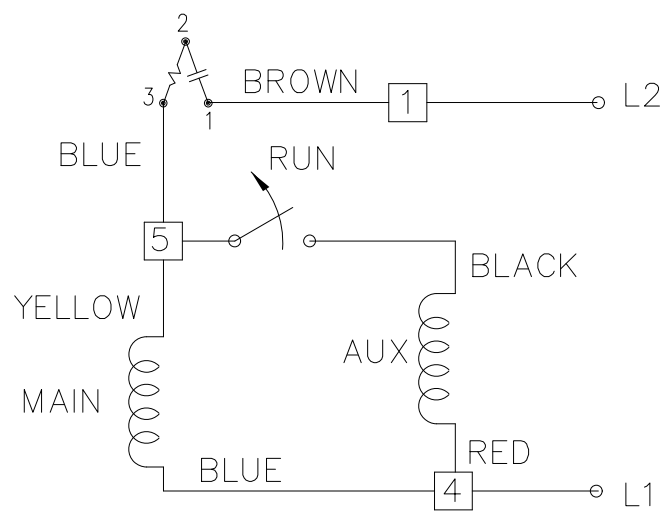


NOTE:-
1) NAMEPLATE LOC @ "A" READ FROM TERM END.

DRAWING REVISION A		REVISION BY	DATE	TOLERANCES UNLESS OTHERWISE SPECIFIED:		DRAWN BY A SUPPANAVAR		REGAL™ Regal Beloit America, Inc.	
ECO ECO-0159114		APPROVED BY	DATE	DEC.	INCH	mm	ANGLE	DATE 12/18/2018	DESCRIPTION OUTLINE
ECO DESCRIPTION OUTLINE CONVERSION PROJECT		COPYRIGHT REGAL BELOIT AMERICA, INC. ALL RIGHTS RESERVED. PROPRIETARY AND CONFIDENTIAL INFORMATION - THIS DOCUMENT IS THE PROPERTY OF REGAL BELOIT AMERICA, INC. (OWNER) AND CONTAINS OWNER'S PROPRIETARY INFORMATION. ANY PERSON, CORPORATION OR OTHER FIRM RECEIVING IT IS DEEMED, BY RECEIVING IT, TO AGREE THAT IT, AND/OR ANY PART OF IT, SHALL NOT BE DISCLOSED TO ANY PERSON, CORPORATION OR OTHER ENTITY, DUPLICATED, AND/OR USED, EXCEPT AS EXPRESSLY APPROVED IN WRITING IN ADVANCE BY OWNER. THIS DOCUMENT SHALL BE RETURNED TO OWNER UPON REQUEST. IT MAY BE SUBJECT TO CERTAIN RESTRICTIONS UNDER APPLICABLE EXPORT CONTROL LAWS AND REGULATIONS.		.X	±0.1	[±2.5]	±7° 30"	APPROVED BY S MACHARLA	
DASH		"C"	"XB"	REMOVE BURRS & BREAK SHARP EDGES: .003/.015 [0.076/.381] X 45°		CORNER FILLETS: R.02 [5.1]		DATE 12/27/2018	MATERIAL SS403617
575		9.75 [247.65]	5.94 [150.88]	MACHINED SURFACES: 200 INCH/mm		5.1 INCH/mm		REFERENCE SS403617	
				mm SHOWN IN [BRACKETS]		THIRD ANGLE PROJECTION		PROCESS/FINISH	SIZE B
								DRAWING NUMBER SS404336	SHEET 1 OF 1

4 3 2 1

SINGLE VOLTAGE – SPLIT PHASE
REVERSIBLE ON TERM BOARD
WITH OVERLOAD PROTECTION



VIEWING TERMINAL END

C.C.W. ROTATION SHOWN.

FOR C.W. ROTATION INTERCHANGE
YELLOW & BLUE LEADS ON TERM 5 & 4.

DASH LINES INDICATE LEADS CONNECTED
TO MOTOR SIDE OF SWITCH.

DRAWING REVISION 06	REVISION BY KVDG	REV DATE/ DATE 05/06/2025	TOLERANCES (EXCEPT AS NOTED): DEC. INCH mm ANGLE .X ±0.1 [±3] ±0.5° .XX ±0.01 [±0.3] .XXX ±0.005 [±0.13] .XXXX ±0.0005 [±0.013]	DRAWN BY ML	Regal Beloit America, Inc.		
REQUEST NUMBER ECR-0242555	APPROVED BY DS	DATE 05/06/2025	REMOVE BURRS & BREAK SHARP EDGES: .003/.015 [.08/.38] X 45 CORNER FILLETS: R.02 [.5] MACHINED SURFACES: 125/ 3.2/ INCH mm/	DATE 01-27-1988			
REQUEST NUMBER DESCRIPTION UPDATED THE DRAWING TO RRX TEMPLATE.				APPROVED BY DRN	DESCRIPTION CONNECTION DIAGRAM		
COPYRIGHT (PER REVISION DATE) REGAL BELOIT AMERICA, INC. ALL RIGHTS RESERVED. PROPRIETARY AND CONFIDENTIAL INFORMATION - THIS DOCUMENT IS THE PROPERTY OF REGAL BELOIT AMERICA, INC. (OWNER) AND CONTAINS OWNER'S PROPRIETARY INFORMATION. ANY PERSON, CORPORATION OR OTHER FIRM RECEIVING IT IS DEEMED, BY RECEIVING IT, TO AGREE THAT IT, AND/OR ANY PART OF IT, SHALL NOT BE DISCLOSED TO ANY PERSON, CORPORATION OR OTHER ENTITY, DUPLICATED, AND/OR USED, EXCEPT AS EXPRESSLY APPROVED IN WRITING IN ADVANCE BY OWNER. THIS DOCUMENT SHALL BE RETURNED TO OWNER UPON REQUEST. IT MAY BE SUBJECT TO CERTAIN RESTRICTIONS UNDER APPLICABLE EXPORT CONTROL LAWS AND REGULATIONS.				DATE 03-11-1988	48 FR. - SINGLE VOLTAGE REVERSIBLE		
				REFERENCE	MAT'L	PROCESS/FINISH	
			mm DIMENSIONS IN [BRACKETS] ARE FOR REFERENCE ONLY	THIRD ANGLE PROJECTION	SIZE B	DRAWING NUMBER EE7195	SHEET 1 OF 1

4 3 2 1

FORM 3531 REV.3 02/07/99

** Subject to change without notice.



REGAL REXNORD CORPORATION
TYPICAL PERFORMANCE CURVE for AC MOTOR

Customer

Curve at

115 Volts
60 HZ
0.25 HP

HP 0.25

PHASE 1

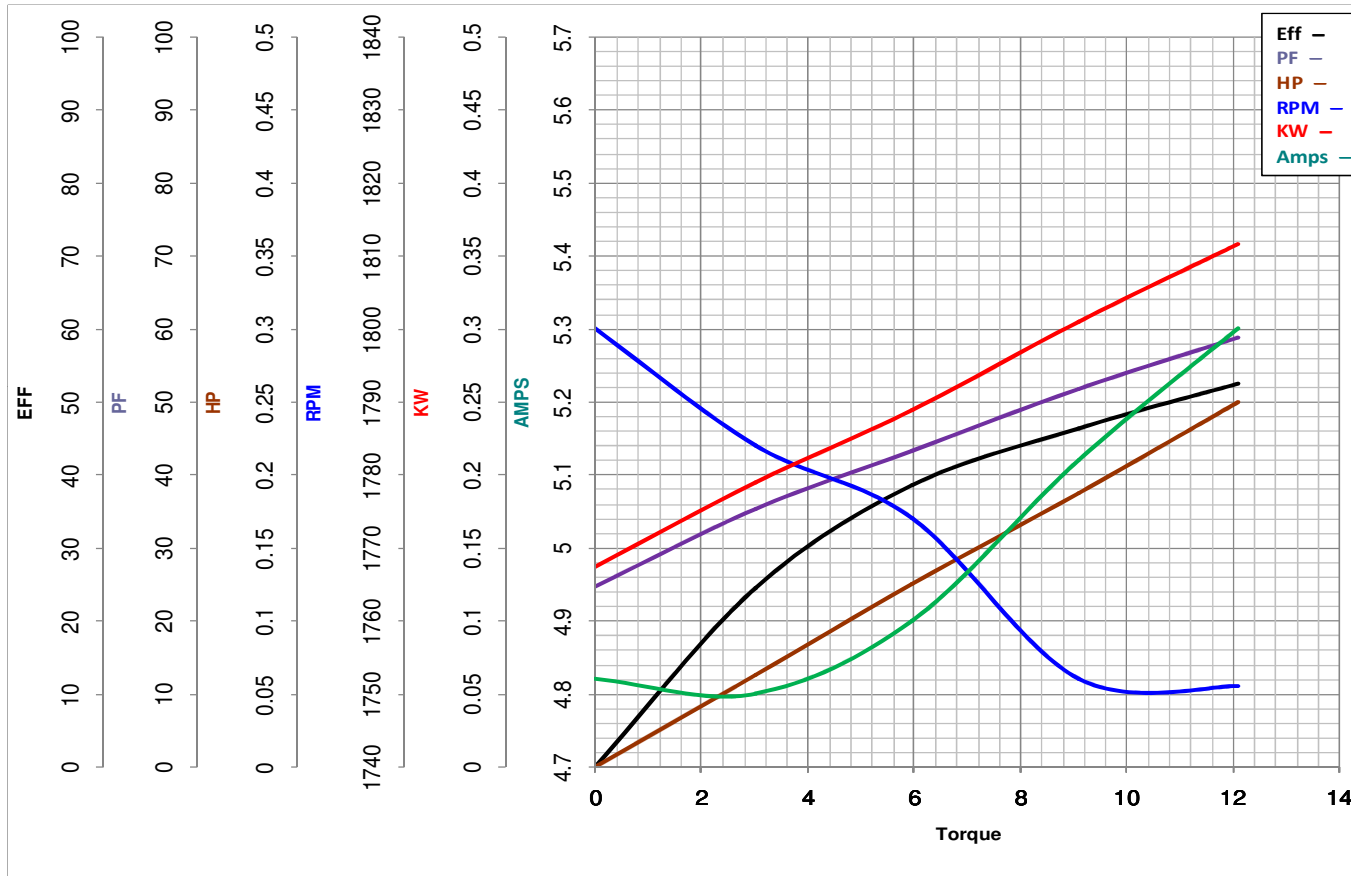
Model No 48S17D2104

VOLTS 115

Catalog No S126

HZ 60

RPM 1725



Torque in Oz.Ft

FL TORQUE 12.1 Oz.Ft
BD TORQUE 32.8 Oz.Ft
LR TORQUE 24.5 Oz.Ft

FL AMPS 5.3
PU TORQUE 22.3 Oz.Ft
LR AMPS 45.6

WINDING SE48494-1

Date 1/9/2019