

# PRODUCT INFORMATION PACKET



Model No: 056B17T20

Catalog No: X913

General Purpose Farm Duty Motor, 0.50 HP, 1 Ph, 60 Hz, 115/230 V, 1800 RPM, 56 Frame, TEAO



Regal and LEESON are trademarks of Regal Rexnord Corporation or one of its affiliated companies.

©2025 Regal Rexnord Corporation, All Rights Reserved. MC017097E



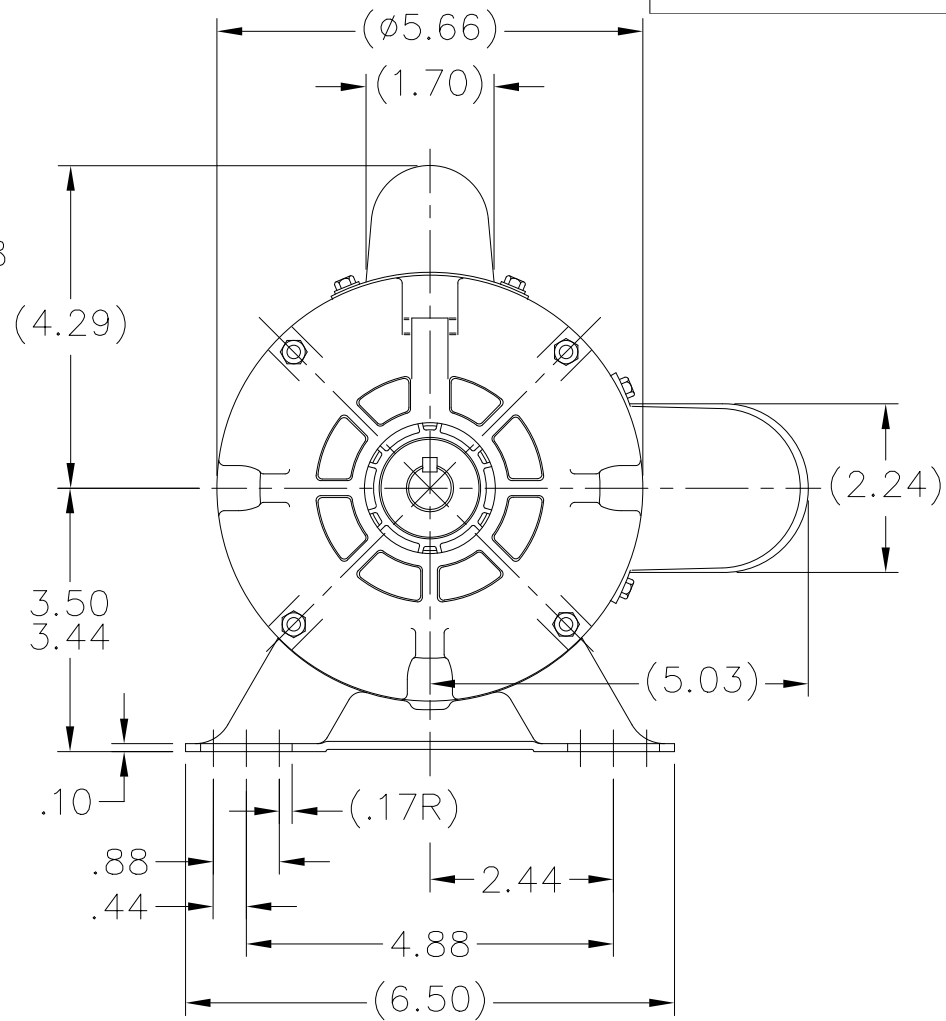
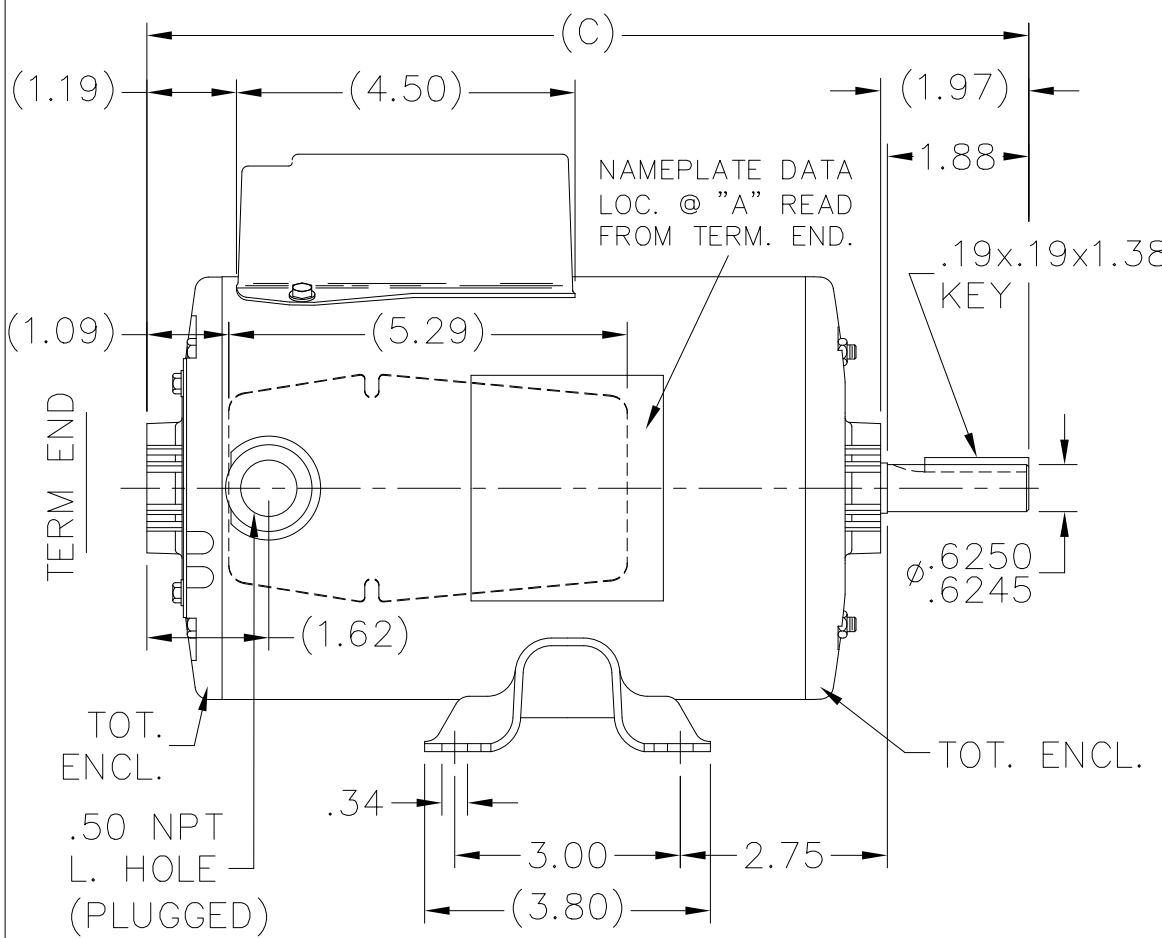


### Nameplate Specifications

Phase	1	Output HP	0.50 Hp
Output KW	0.37 kW	Voltage	115/230 V
Speed	1725 rpm	Service Factor	1.0
Frame	56	Enclosure	Totally Enclosed Air Over
Thermal Protection	Automatic	Efficiency	78.7 %
Ambient Temperature	40 °C	Frequency	60 Hz
Current	4.6/2.3 A	Power Factor	93.6
Duty	Continuous	Insulation Class	B
Design Code	NO DESIGN CODE	KVA Code	F
Drive End Bearing Size	6203	Opp Drive End Bearing Size	6203
UL	Recognized	CSA	Y
CE	N	IP Code	43
Number of Speeds	1		

### Technical Specifications

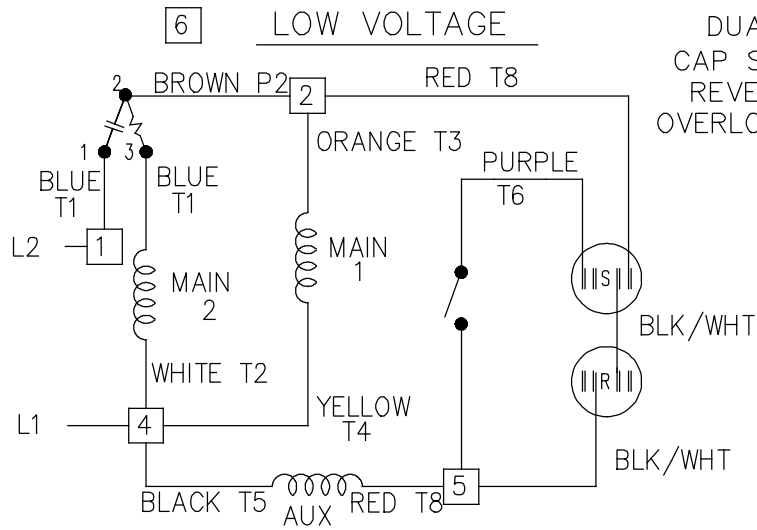
Electrical Type	Capacitor Start Capacitor Run	Starting Method	Across The Line
Poles	4	Rotation	Selective Counterclockwise
Resistance Main	0 Ohms	Mounting	Rigid Base
Motor Orientation	Horizontal	Drive End Bearing	Ball
Opp Drive End Bearing	Ball	Frame Material	Rolled Steel
Shaft Type	T	Overall Length	10.47 in
Frame Length	6.50 in	Shaft Diameter	0.625 in
Shaft Extension	1.97 in	Assembly/Box Mounting	F1 ONLY
Outline Drawing	A-SS75533-650	Connection Drawing	A-EE9002F



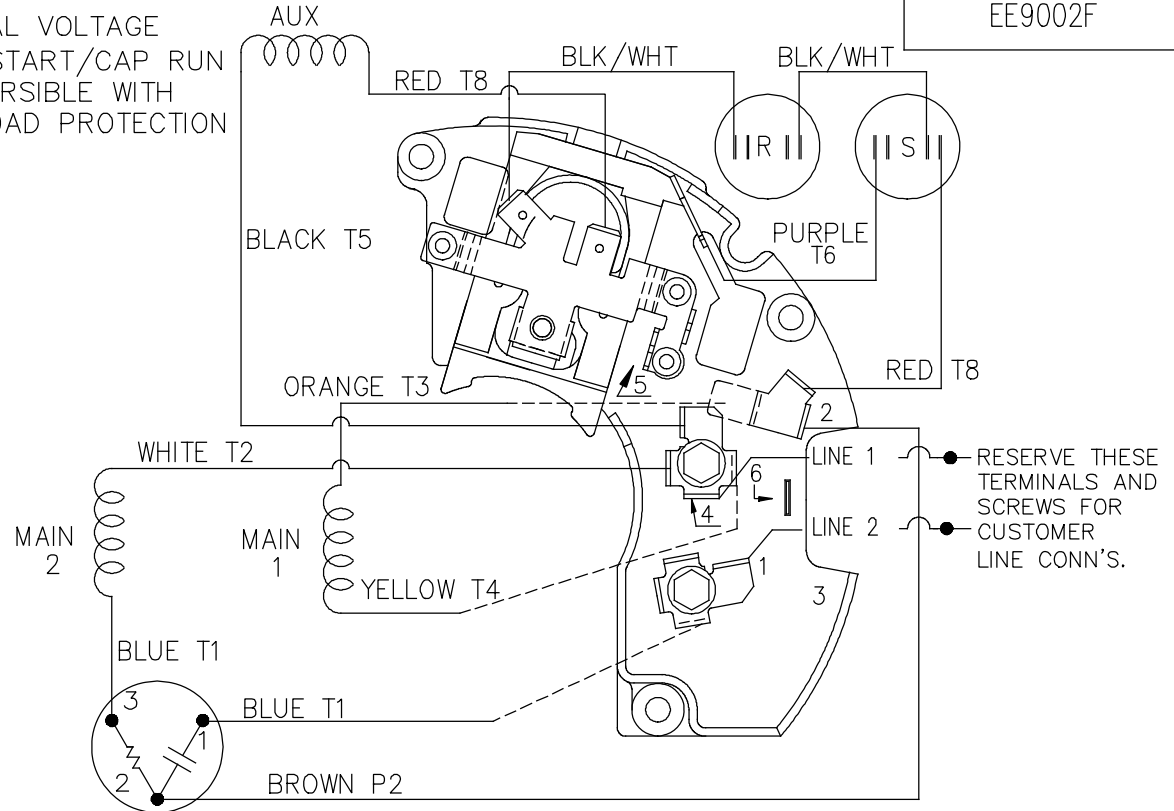
DASH	FR.	C
650	48	10.47
675	48	10.72

NO.	REVISION	BY & DATE	CHK	TOLERANCES UNLESS SPECIFIED	
				DEC.	INCHES
4	CHG FROM MARATHON TO RRX TEMPLATE PER ECR-0233452	MD 5/2/24	DS	.X	$\pm$ .1
3	UPDATED DRAWING	TJW 04/20/2007		.XX	$\pm$ .03
2	REDRAWN IN AUTOCAD	TAT 05-09-2005	ML	.XXX	$\pm$ .005
1	NEW DRAWING 3893983	RM 03-20-1992		.XXXX	$\pm$ .0005
				ANG	$\pm$ 7'30"

 Regal Beloit America, Inc.	DRAWN	RM 03-10-1992
	CHK	ML 03-12-1992
	APPD	MB 03-14-1992
	SCALE	3=8
	REF	
TITLE	OUTLINE	
MAT'L.		
FINISH		
PREV		



DUAL VOLTAGE  
CAP START/CAP RUN  
REVERSIBLE WITH  
OVERLOAD PROTECTION



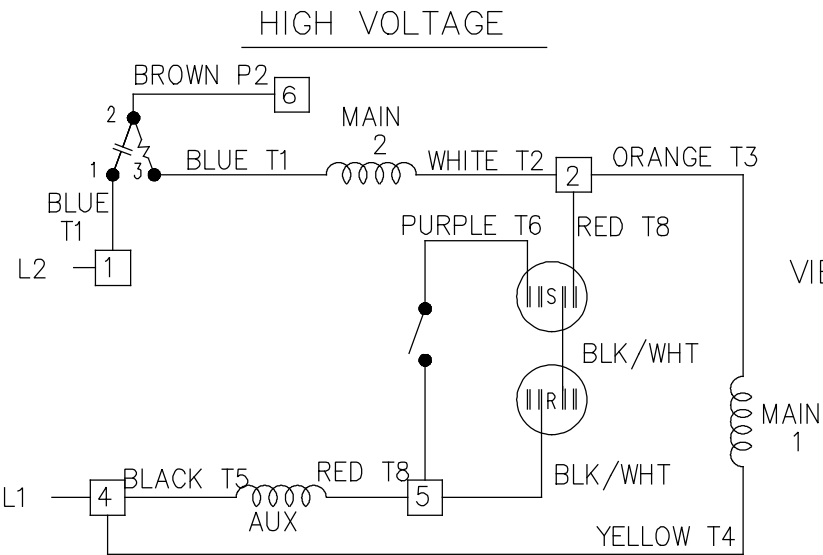
VIEWING TERM END


LOW VOLTAGE CCW ROTATION SHOWN.

FOR HIGH VOLTAGE  
CONNECT BROWN TERM 2 TO TERM 6.  
CONNECT WHITE TERM 4 TO TERM 2.

TO REVERSE ROTATION EITHER  
VOLTAGE INTERCHANGE RED  
LEAD WITH BLACK LEAD.

DASH LINES INDICATE LEADS CONNECTED  
TO MOTOR SIDE OF SWITCH.



6	ADDED T MARKINGS	DS 07/19/2018	VC	TOLERANCES UNLESS SPECIFIED		 <b>Regal Beloit America, Inc.</b>	DRAWN ML 02-11-1988		
5	REVISED LINE 2 LOCATION	RM 01-28-1991		DEC.	INCHES		CHK FG 02-11-1988		
4	UPDATED SCHEMATIC PER CN 6014	DA 08-01-1990		.X	± --	APPD DNR 03-11-1988	SCALE 1=1		
3	RED LEAD FROM AUX WAS ON ANGLE TERM. PURPLE LEAD WAS RED	DA 07-02-1990		.XX	± --	TITLE CONNECTION DIAGRAM 48 FR. DUAL VOLTAGE REVERSIBLE	REF		
2	ADDED CUSTOMER CONNECTION NOTE. CN 6011	BW 08-03-1989		.XXXX	± --	MAT'L.	FMF		
NO.	REVISION	BY & DATE	CHK	ANG	± --	FINISH	PREV		
THIS DRAWING IN DESIGN AND DETAIL IS OUR PROPERTY AND MUST NOT BE USED EXCEPT IN CONNECTION WITH OUR WORK ALL RIGHTS OF DESIGN AND INVENTION ARE RESERVED THIS IS AN ELECTRONICALLY GENERATED DOCUMENT - DO NOT SCALE THIS PRINT			RFP	CAD FILE EE9002F		SIZE A	DRAWING NO. EE9002F	PAGE OF	REV. 6
			DIST WP						





**REGAL REXNORD CORPORATION**  
TYPICAL PERFORMANCE CURVE for AC MOTOR

Customer

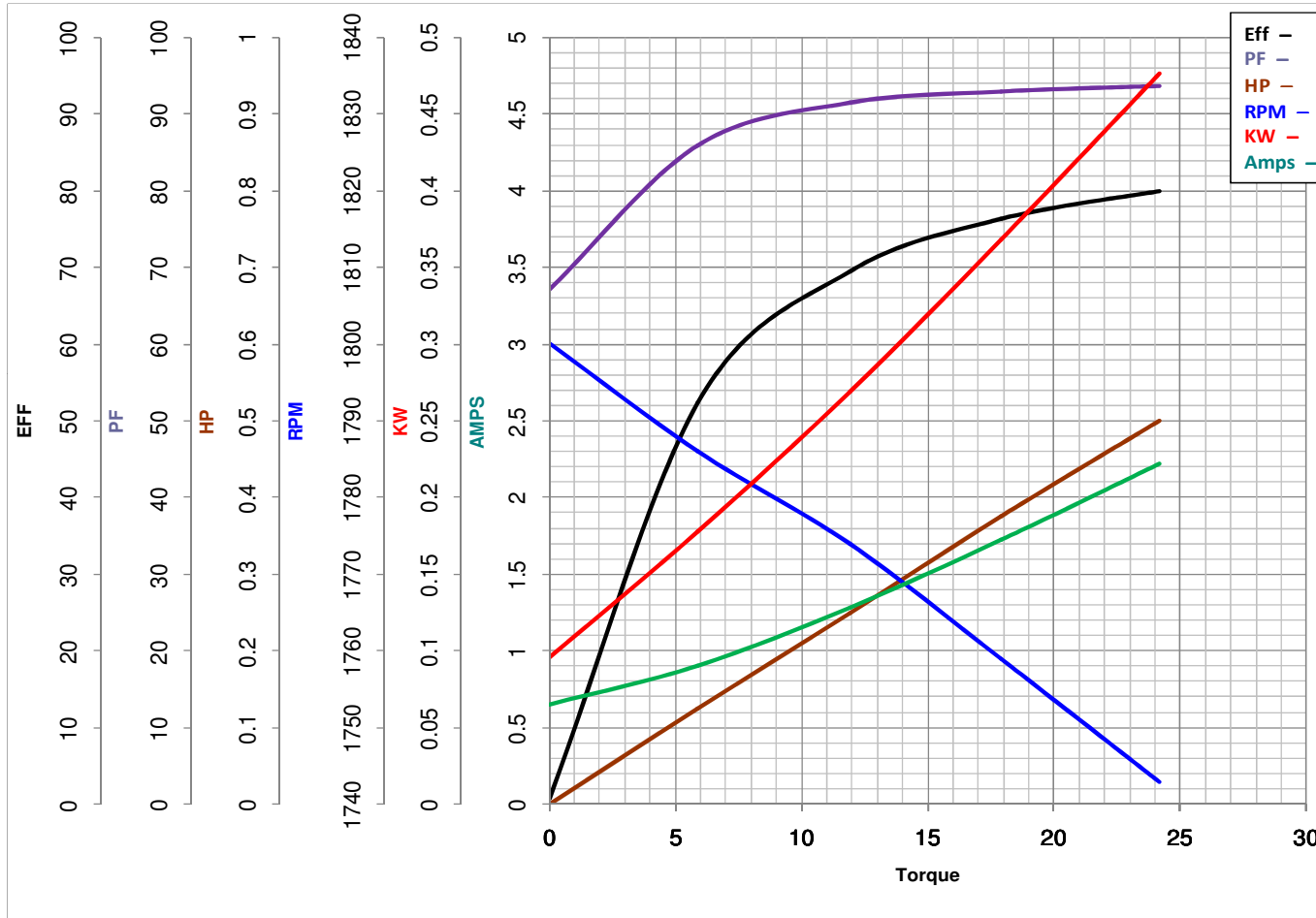
Curve at 460 Volts      HP 0.50      PHASE 1  
60 HZ  
0.5 HP      VOLTS 115/230

Model No 56B17T20

Catalog No X913

HZ 60

RPM 1725



Torque in Oz.Ft

FL TORQUE 24.2 Oz.Ft  
BD TORQUE 52.0 Oz.Ft  
LR TORQUE 33 Oz.Ft

FL AMPS 4.6/2.3  
PU TORQUE 31.0 Oz.Ft  
LR AMPS 11.4

WINDING BE48419-3

Date 1/17/2019