

# PRODUCT INFORMATION PACKET



Model No: 056B34F5327

Catalog No: D315

General Purpose Motor, 2 HP, 1 Ph, 60 Hz, 115/208-230 V, 3600 RPM, 56HC Frame, TEFC



Regal and LEESON are trademarks of Regal Rexnord Corporation or one of its affiliated companies.  
©2025 Regal Rexnord Corporation, All Rights Reserved. MC017097E





### Nameplate Specifications

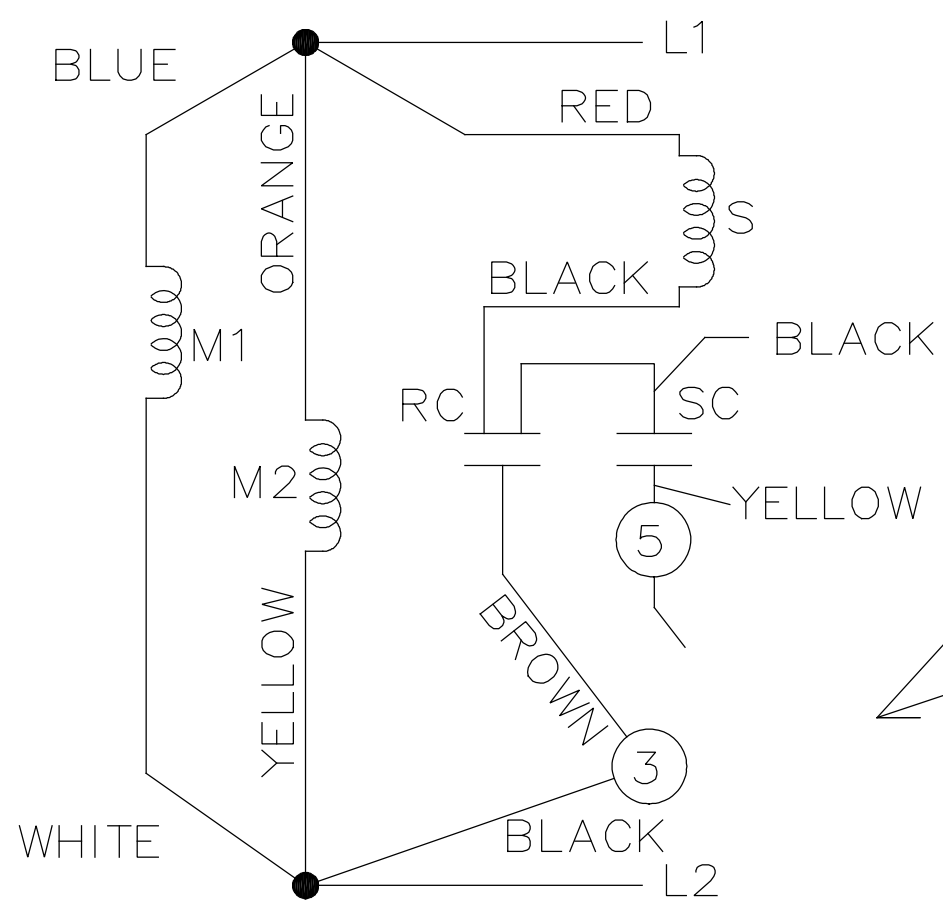
Phase	1	Output HP	2 Hp
Output KW	1.5 kW	Voltage	115/208-230 V
Speed	3450 rpm	Service Factor	1.15
Frame	56HC	Enclosure	Totally Enclosed Fan Cooled
Thermal Protection	No Protection	Efficiency	79 %
Ambient Temperature	40 °C	Frequency	60 Hz
Current	16.6/9.4-8.3 A	Power Factor	98.3
Duty	Continuous	Insulation Class	B
Design Code	N	KVA Code	J
Drive End Bearing Size	6203	Opp Drive End Bearing Size	6203
UL	Recognized	CSA	Y
CE	Y	IP Code	43
Number of Speeds	1		

### Technical Specifications

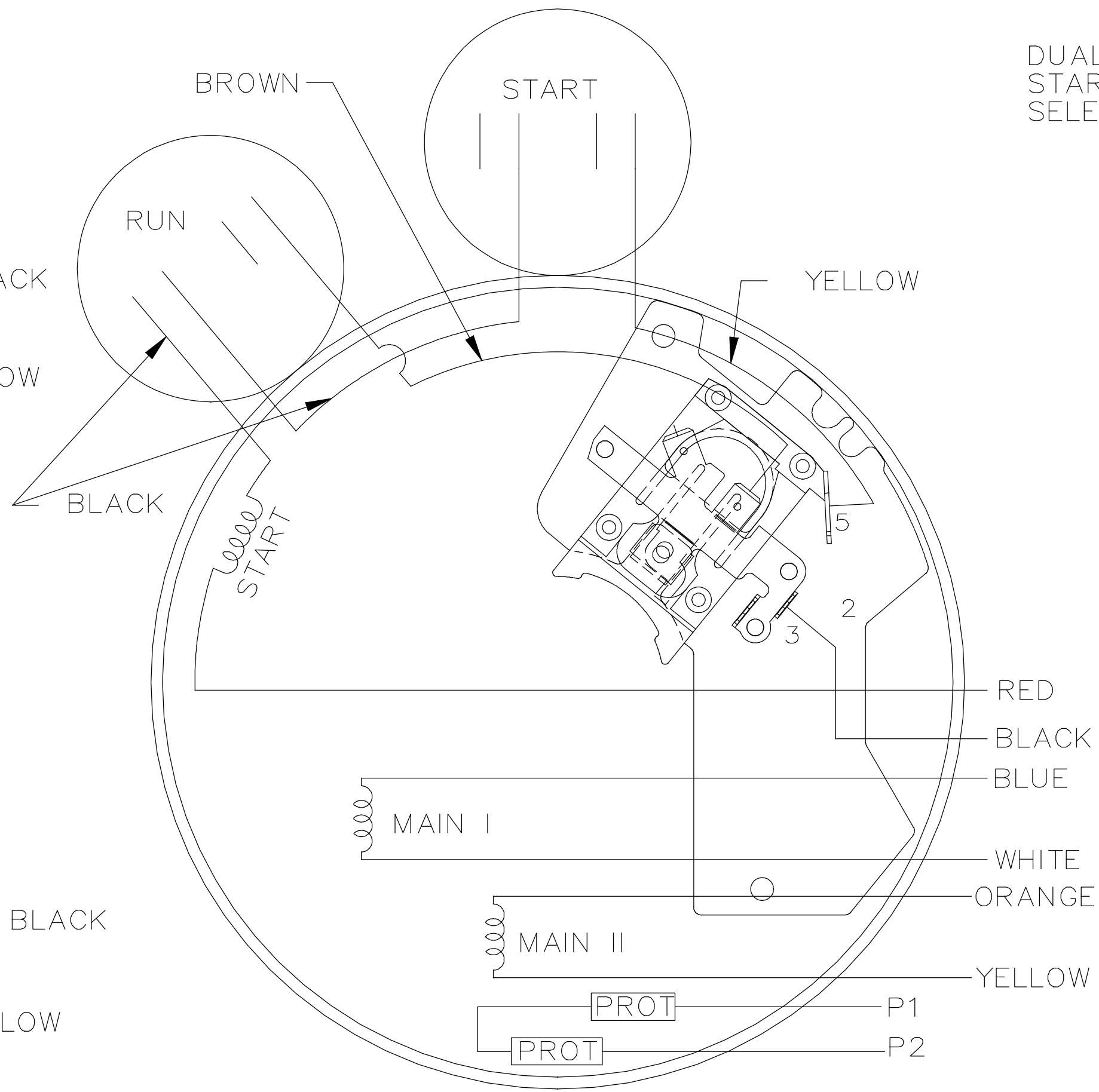
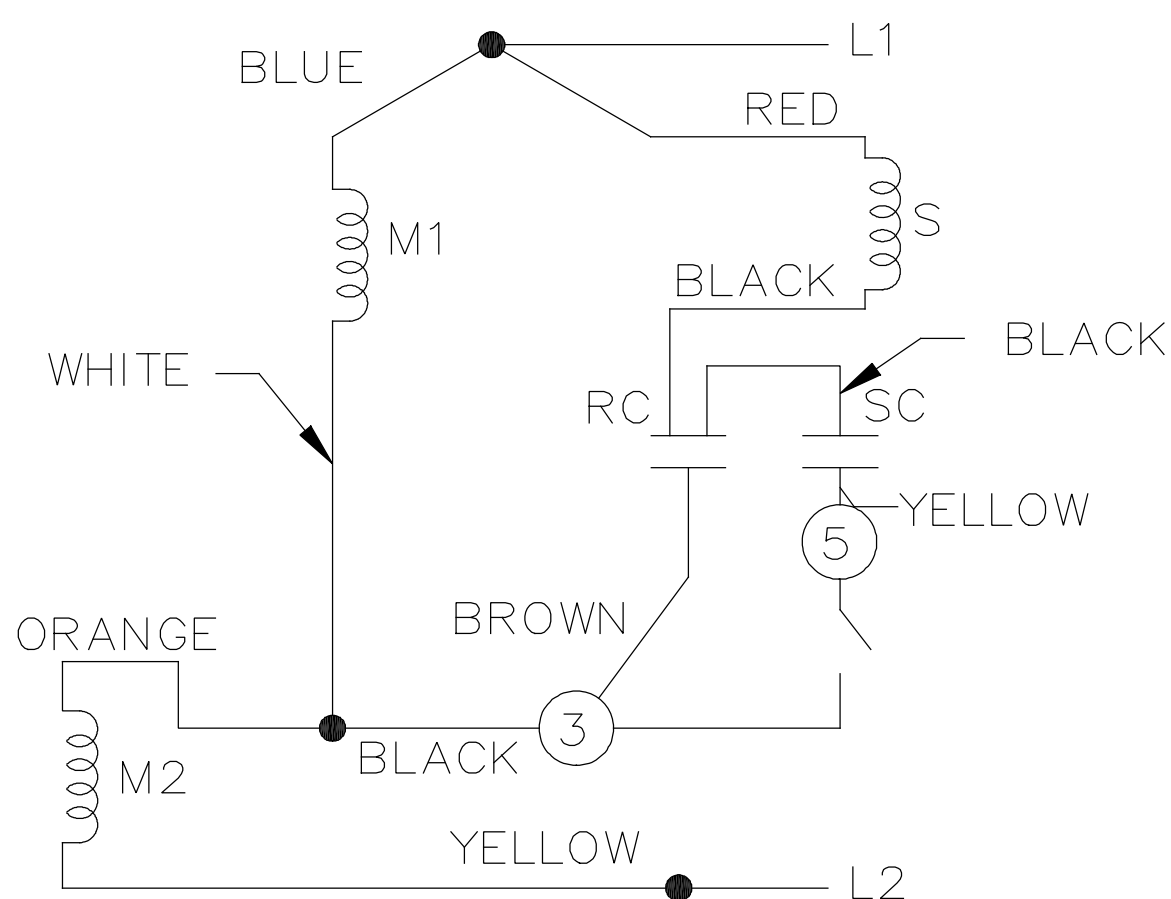
Electrical Type	Capacitor Start Capacitor Run	Starting Method	Across The Line
Poles	2	Rotation	Selective Counterclockwise
Resistance Main	0 Ohms	Mounting	Bolt-on Base
Motor Orientation	Horizontal	Drive End Bearing	Ball
Opp Drive End Bearing	Ball	Frame Material	Rolled Steel
Shaft Type	NEMA 56	Overall Length	13.31 in
Frame Length	8.06 in	Shaft Diameter	0.625 in
Shaft Extension	2.06 in	Assembly/Box Mounting	F1 ONLY
Connection Drawing	102006-51	Outline Drawing	A-100144-806



LOW VOLTAGE C.C.W.

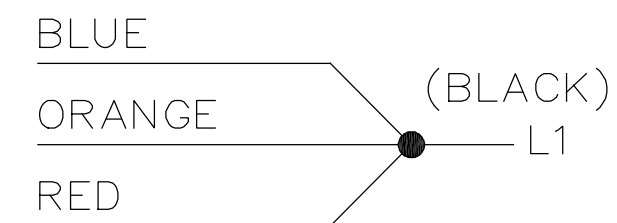


HIGH VOLTAGE C.C.W.

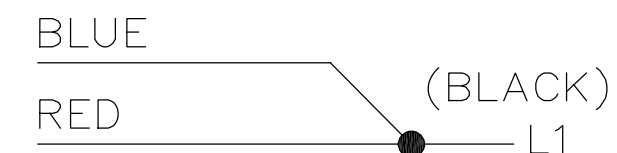


DUAL VOLTAGE CAPACITOR  
START-CAP RUN NO OVERLOAD  
SELECT ROTATION

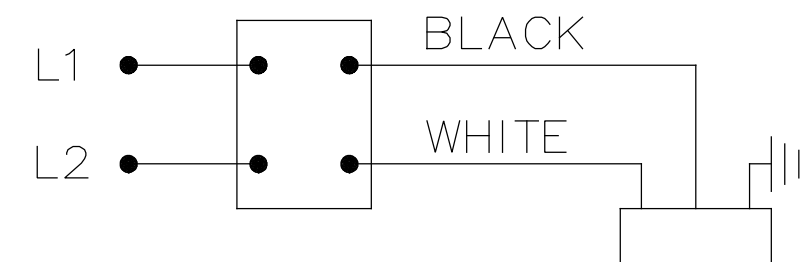
LOW VOLTAGE C.C.W. ROTATION




HIGH VOLTAGE C.C.W. ROTATION



FOR C.W. ROTATION,  
EITHER VOLTAGE,  
INTERCHANGE RED  
WITH BLACK LEAD



CORD CONN. WHEN SPECIFIED

		TOLERANCES UNLESS SPECIFIED		 <b>Regal Beloit America, Inc.</b>	DRAWN	SG 05/14/19
		DEC.	INCHES		CHK	CD 05/14/19
		.X	±.1		APPD	CD 05/14/19
		.XX	±.02	TITLE	SCALE	1:1
		.XXX	±.005		REF	102006-51
01	CONVERTED TO DWG FILE	SG	05/14/19	MAT'L.	FMF	PR141156
NO.	REVISION	BY & DATE	CHK	FINISH	PREV	
THIS DRAWING IN DESIGN AND DETAIL IS OUR PROPERTY AND MUST NOT BE USED EXCEPT IN CONNECTION WITH OUR WORK ALL RIGHTS OF DESIGN AND INVENTION ARE RESERVED THIS IS AN ELECTRONICALLY GENERATED DOCUMENT - DO NOT SCALE THIS PRINT				RFP	CAD FILE	102006-51
				DIST	WP	
				SIZE	DRAWING NO.	PAGE OF
				A	102006-51	01





**REGAL REXNORD CORPORATION**  
TYPICAL PERFORMANCE CURVE for AC MOTOR

Customer

Curve at

230 Volts  
60 HZ  
2 HP

HP 2.00

PHASE 1

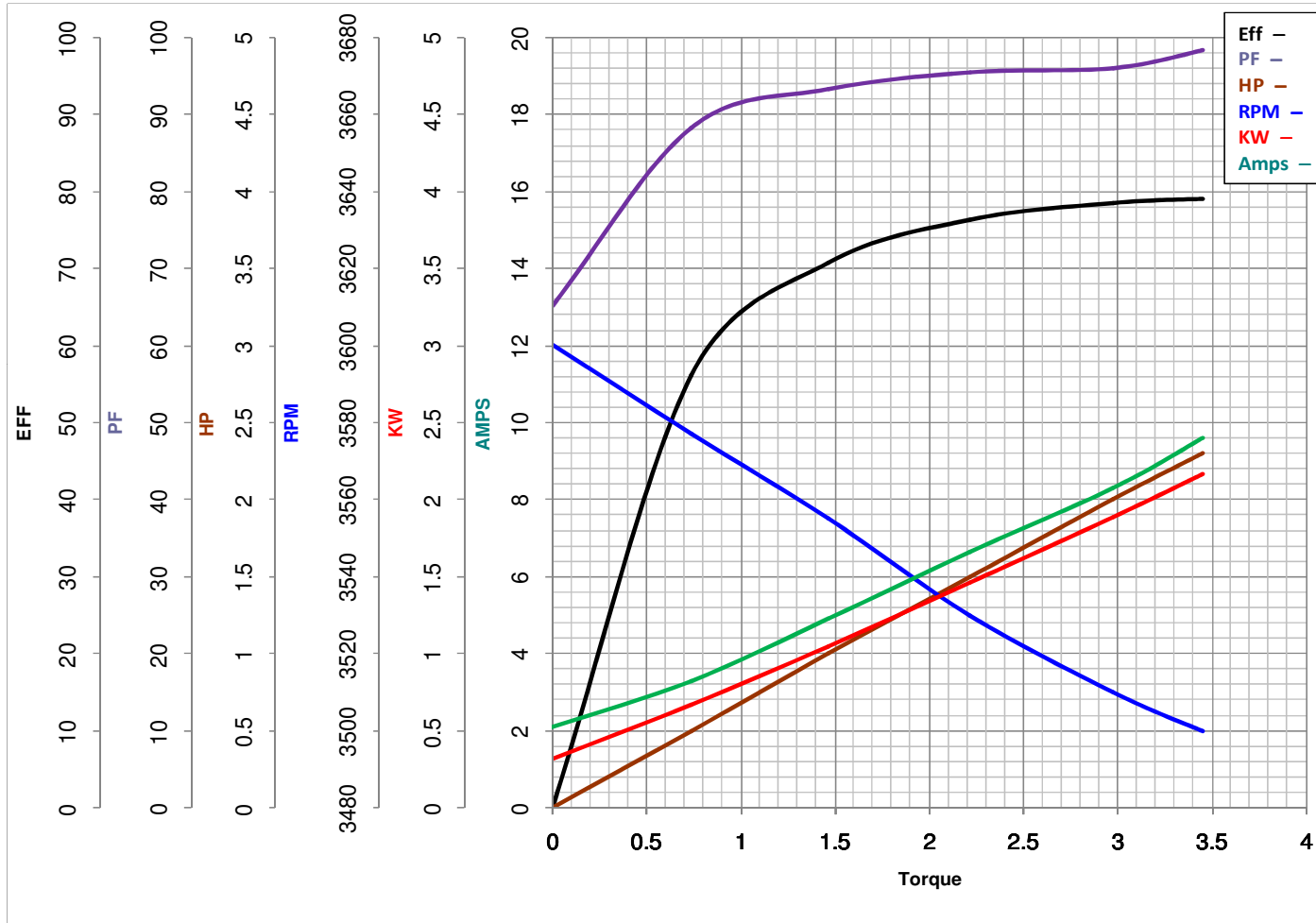
Model No 56B34F5327

VOLTS 115/208-230

Catalog No D315

HZ 60

RPM 3450



Torque in Lb.Ft

FL TORQUE 2.98 Lb.Ft  
BD TORQUE 7.7 Lb.Ft  
LR TORQUE 7.37 Lb.Ft

FL AMPS 16.6/9.4-8.3  
PU TORQUE 6.7 Lb.Ft  
LR AMPS 61.3

WINDING ZB203-3

Date 1/7/2019

## EC Declaration of Conformity

The undersigned representing  
the manufacturer:

Regal Beloit America  
1946 West Cook Road  
Fort Wayne, IN 46818

and the authorized representative  
established within the Community:

Regal Beloit Italy  
Via Modena, 18  
24040 Ciserano(BG) - Italy

are committed to providing customers with products that comply with applicable regulations and international protocols to which they are subject, including the requirements of the European Parliament Directive on the Harmonization of the laws relating to electrical equipment designed for use within certain voltage limits (2014/35/EU).

Regal Beloit America declares that the following product(s), to which this declaration relates, are in conformity with the relevant sections of the EC standards listed below.

This statement supersedes any statements previously issued pertaining to the product(s) listed below and is subject to change without notice.

Model No : 056B34F5327

(Model No. may contain prefix and/or suffix characters)

Catalog No : D315

Rework No : N/A

Directives :

Low Voltage Directive 2014/35/EU

Harmonized Standards Used :

EN 60034-1: 2010 (IEC 60034-1: 2010)

EN 60034-5: 2001/A1:2007 (IEC 60034-5: 2000/A1:2006)

Authorized Representative:



Zach Stauffer  
Vice President, Engineering

Authorized Representative in the Community:



Stefano Casiraghi  
Technology Director, Engineering

Created on 07/08/2025

**CE 25**