

# PRODUCT INFORMATION PACKET



Model No: 056C17D2099

Catalog No: S113

General Purpose Motor, 0.50 HP, 1 Ph, 60 Hz, 115/230 V, 1800 RPM, 56Z Frame, DP



Regal and LEESON are trademarks of Regal Rexnord Corporation or one of its affiliated companies.

©2025 Regal Rexnord Corporation, All Rights Reserved. MC017097E



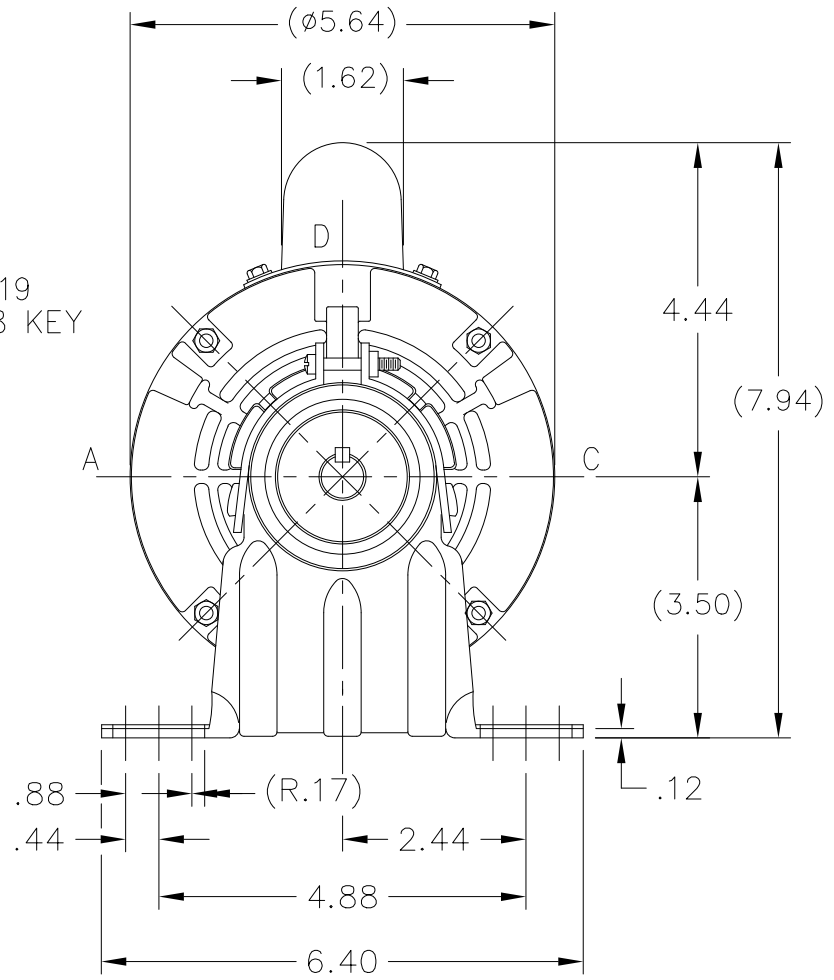
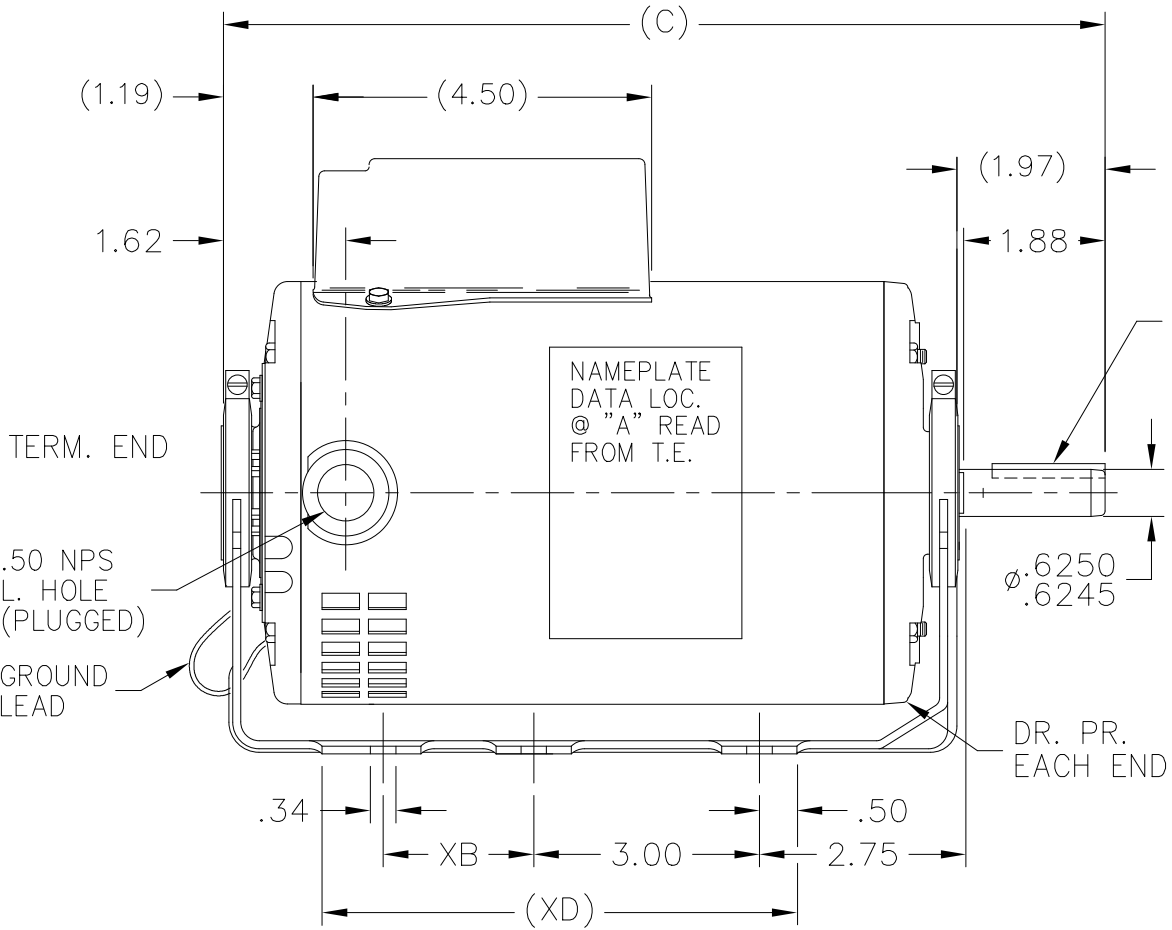


### Nameplate Specifications

Phase	1	Output HP	0.50 Hp
Output KW	0.37 kW	Voltage	115/230 V
Speed	1725 rpm	Service Factor	1.0
Frame	56Z	Enclosure	Drip Proof
Thermal Protection	Automatic	Efficiency	60.4 %
Ambient Temperature	40 °C	Frequency	60 Hz
Current	9.1/4.5 A	Power Factor	59.5
Duty	Continuous	Insulation Class	B
Design Code	NO DESIGN CODE	KVA Code	L
Drive End Bearing Size	6203	Opp Drive End Bearing Size	6203
UL	Recognized	CSA	Y
CE	N	IP Code	22
Number of Speeds	1		

### Technical Specifications

Electrical Type	Capacitor Start Induction Run	Starting Method	Across The Line
Poles	4	Rotation	Selective Counterclockwise
Mounting	Resilient Base	Motor Orientation	Horizontal
Drive End Bearing	Ball	Opp Drive End Bearing	Ball
Frame Material	Rolled Steel	Shaft Type	Single Special Extension
Overall Length	10.22 in	Frame Length	6.25 in
Shaft Diameter	0.625 in	Shaft Extension	1.97 in
Assembly/Box Mounting	F1 ONLY		
Outline Drawing	A-SS403779-625	Connection Drawing	A-EE9002M



DASH	XB	XD	C	DASH	XB	XD	C
625	0	4.81	10.22	700	0	5.50	10.97
				725	0	5.81	11.22
675	0	5.43	10.72				

TOLERANCES UNLESS SPECIFIED

DEC.	INCHES
.X	$\pm .1$
.XX	$\pm .03$
.XXX	$\pm .005$
.XXXX	$\pm .0005$
ANG	$\pm 7'30''$



Regal Beloit America, Inc.

TITLE OUTLINE  
48 FR.

MAT'L.

FINISH

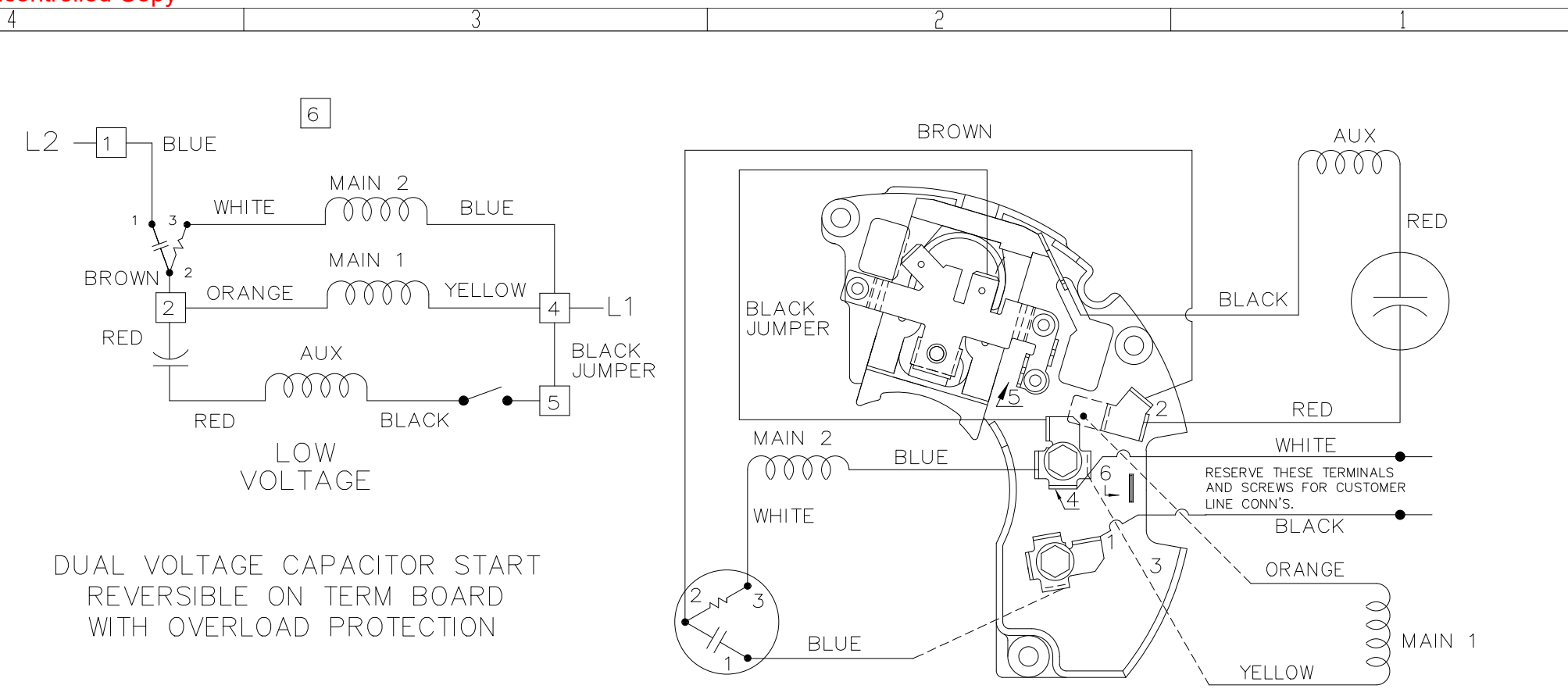
DRAWN	SP 10-01-2008
CHK	NB 10-01-2008
APPD	SP 10-01-2008
SCALE	3=8
REF	SS79521
FMF	08-2130
PREV	

THIS DRAWING IN DESIGN AND DETAIL IS OUR PROPERTY AND MUST NOT BE USED EXCEPT IN CONNECTION WITH OUR WORK ALL RIGHTS OF DESIGN AND INVENTION ARE RESERVED THIS IS AN ELECTRONICALLY GENERATED DOCUMENT - DO NOT SCALE THIS PRINT

RFP	
DIST	WP

CAD FILE SS403779

SIZE	DRAWING NO.	PAGE	OF	REV.
A	SS403779			01

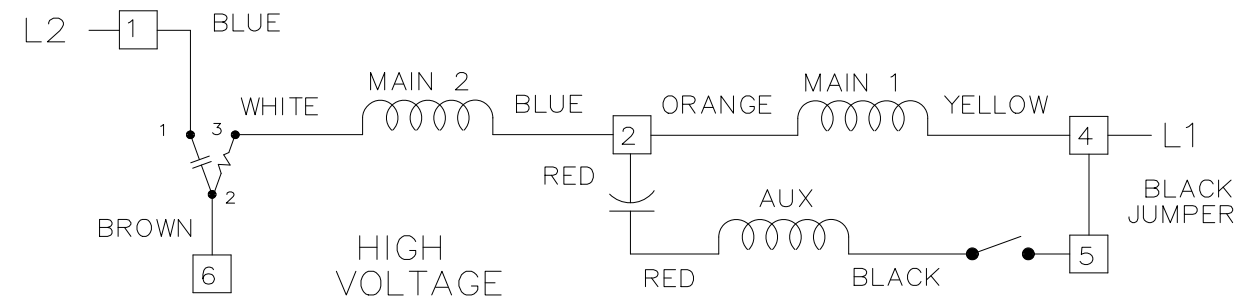


LOW VOLTAGE

DUAL VOLTAGE CAPACITOR START REVERSIBLE ON TERM BOARD WITH OVERLOAD PROTECTION

VIEWING TERM END

LOW VOLTAGE CCW ROTATION SHOWN.



HIGH VOLTAGE

FOR HIGH VOLTAGE CONNECT BROWN TERM 2 TO TERM 6. CONNECT BLUE TERM 4 TO TERM 2.

TO REVERSE ROTATION EITHER VOLTAGE INTERCHANGE RED LEAD WITH BLACK LEAD.

DRAWING REVISION 4	REVISION BY KVDG	REV DATE/ DATE 05/06/2025	TOLERANCES (EXCEPT AS NOTED): DEC. INCH mm ANGLE .X ±0.1 [±3] ±0.5° .XX ±0.01 [±0.3] .XXX ±0.005 [±0.13] .XXXX ±0.0005 [±0.013]	DRAWN BY BW	Regal Beloit America, Inc.	
REQUEST NUMBER ECR-0242555	APPROVED BY DS	DATE 05/06/2025	REMOVE BURRS & BREAK SHARP EDGES: .003/.015 [.08/.38] X 45 CORNER FILLETS: R.02 [.5] MACHINED SURFACES: 125/ 3.2 INCH mm	DATE 02-22-1990		
REQUEST NUMBER DESCRIPTION UPDATED THE DRAWING TO RRX TEMPLATE.				APPROVED BY GK	DESCRIPTION CONNECTION DIAGRAM	
COPYRIGHT (PER REVISION DATE) REGAL BELOIT AMERICA, INC. ALL RIGHTS RESERVED. PROPRIETARY AND CONFIDENTIAL INFORMATION - THIS DOCUMENT IS THE PROPERTY OF REGAL BELOIT AMERICA, INC. (OWNER) AND CONTAINS OWNER'S PROPRIETARY INFORMATION. ANY PERSON, CORPORATION OR OTHER FIRM RECEIVING IT IS DEEMED, BY RECEIVING IT, TO AGREE THAT IT, AND/OR ANY PART OF IT, SHALL NOT BE DISCLOSED TO ANY PERSON, CORPORATION OR OTHER ENTITY, DUPLICATED, AND/OR USED, EXCEPT AS EXPRESSLY APPROVED IN WRITING IN ADVANCE BY OWNER. THIS DOCUMENT SHALL BE RETURNED TO OWNER UPON REQUEST. IT MAY BE SUBJECT TO CERTAIN RESTRICTIONS UNDER APPLICABLE EXPORT CONTROL LAWS AND REGULATIONS.				DATE 02-22-1990	48 FR. - DUAL VOLTAGE REVERSIBLE	
				REFERENCE	MAT'L	PROCESS/FINISH
			mm DIMENSIONS IN [BRACKETS] ARE FOR REFERENCE ONLY	THIRD ANGLE PROJECTION	SIZE B	DRAWING NUMBER EE9002M
						SHEET 1 OF 1





**REGAL REXNORD CORPORATION**  
TYPICAL PERFORMANCE CURVE for AC MOTOR

Customer

Curve at

230

Volts

HP 0.50

PHASE 1

Model No 56C17D2099

60

HZ

VOLTS 115/230

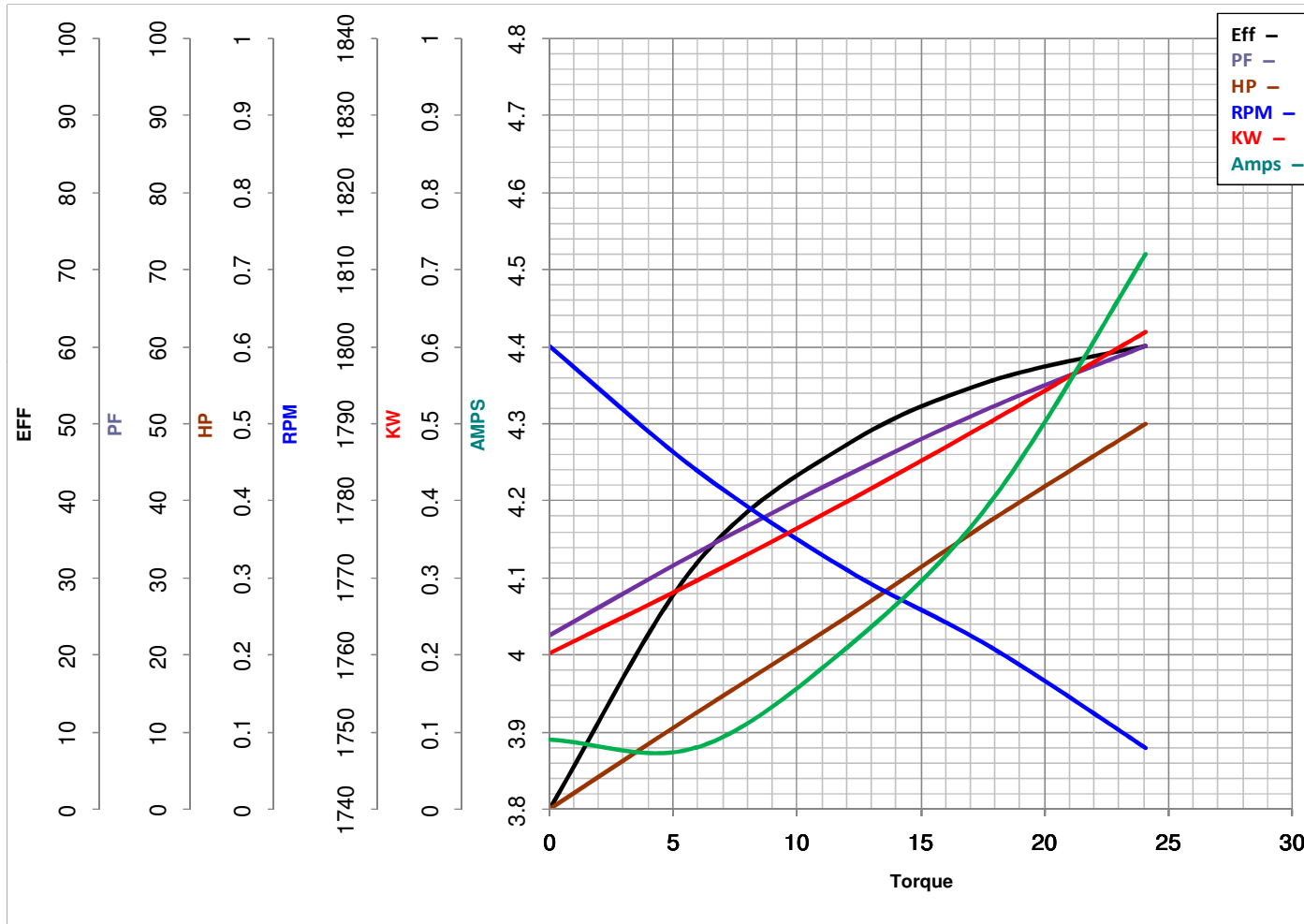
0.5

HP

Catalog No S113

HZ 60

RPM 1725



Torque in Oz.Ft

FL TORQUE 24.1 Oz.Ft  
BD TORQUE 58.5 Oz.Ft  
LR TORQUE 65 Oz.Ft

FL AMPS 9.05/4.5  
PU TORQUE 48.3 Oz.Ft  
LR AMPS 19.5

WINDING CE48452-3

Date 1/7/2019