

PRODUCT INFORMATION PACKET



Model No: 056C17D2113
Catalog No: B608
Fan and Blower Motor, 0.50 HP, 1 Ph, 60 Hz, 277 V, 1800 RPM, 56 Frame, DP



Regal and LEESON are trademarks of Regal Rexnord Corporation or one of its affiliated companies.
©2025 Regal Rexnord Corporation, All Rights Reserved. MC017097E





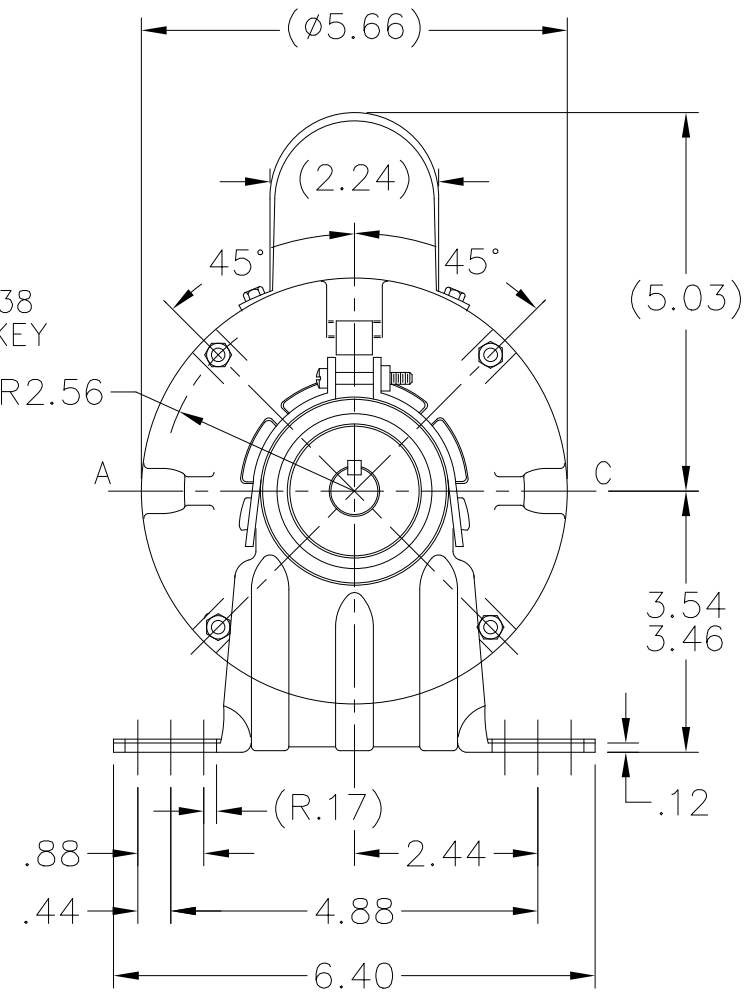
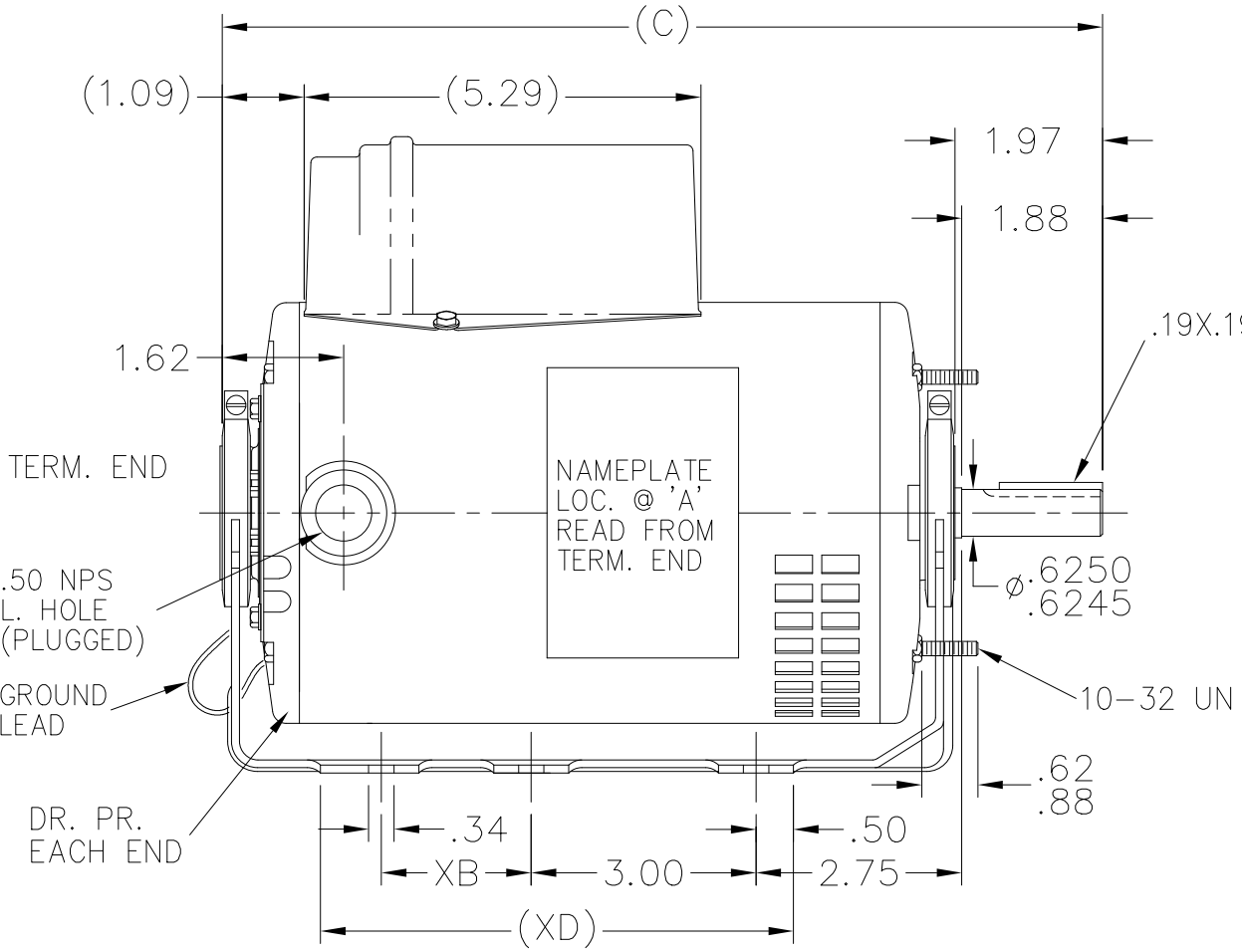
Nameplate Specifications

Phase	1	Output HP	0.50 Hp
Output KW	0.37 kW	Voltage	277 V
Speed	1725 rpm	Service Factor	1.25
Frame	56	Enclosure	Drip Proof
Thermal Protection	No Protection	Efficiency	66 %
Ambient Temperature	40 °C	Frequency	60 Hz
Current	3.6 A	Power Factor	61
Duty	Continuous	Insulation Class	B
Design Code	NO DESIGN CODE	KVA Code	L
Drive End Bearing Size	6203	Opp Drive End Bearing Size	6203
UL	Recognized	CSA	Y
CE	N	IP Code	22
Number of Speeds	1		

Technical Specifications

Electrical Type	Capacitor Start Induction Run	Starting Method	Across The Line
Poles	4	Rotation	Selective Counterclockwise
Resistance Main	0 Ohms	Mounting	Resilient Base - Extended Studs
Motor Orientation	Horizontal	Drive End Bearing	Ball
Opp Drive End Bearing	Ball	Frame Material	Rolled Steel
Shaft Type	T	Overall Length	11.72 in
Frame Length	7.75 in	Shaft Diameter	0.625 in
Shaft Extension	1.97 in	Assembly/Box Mounting	F1 ONLY
Connection Drawing	A-EE9007DR	Outline Drawing	A-SS75534-775

This is an uncontrolled document once printed or downloaded and is subject to change without notice. Date Created:08/07/2025



DASH	XB	XD	C
675	-	5.31	10.72
700	-	5.50	10.97
775	2.00	6.31	11.72

NO.	REVISION	BY & DATE	CHK	TOLERANCES UNLESS SPECIFIED	
				DEC.	INCHES
4	CHG FROM MARATHON TO RRX TEMPLATE PER ECR-0233452	MD 5/2/24	DS	.X	±.1
3	ADDED DASH 675 FOR MU96889	DWH 8/17/2010		.XX	±.03
2	UPDATED DRAWING	TJW 05/07/2007		.XXX	±.005
1	NEW DRAWING 3850091	RM 3/20/1992		.XXXX	±.0005
				ANG	±7'30"

Regal Rexnord Regal Beloit America, Inc.

TITLE OUTLINE

MAT'L.

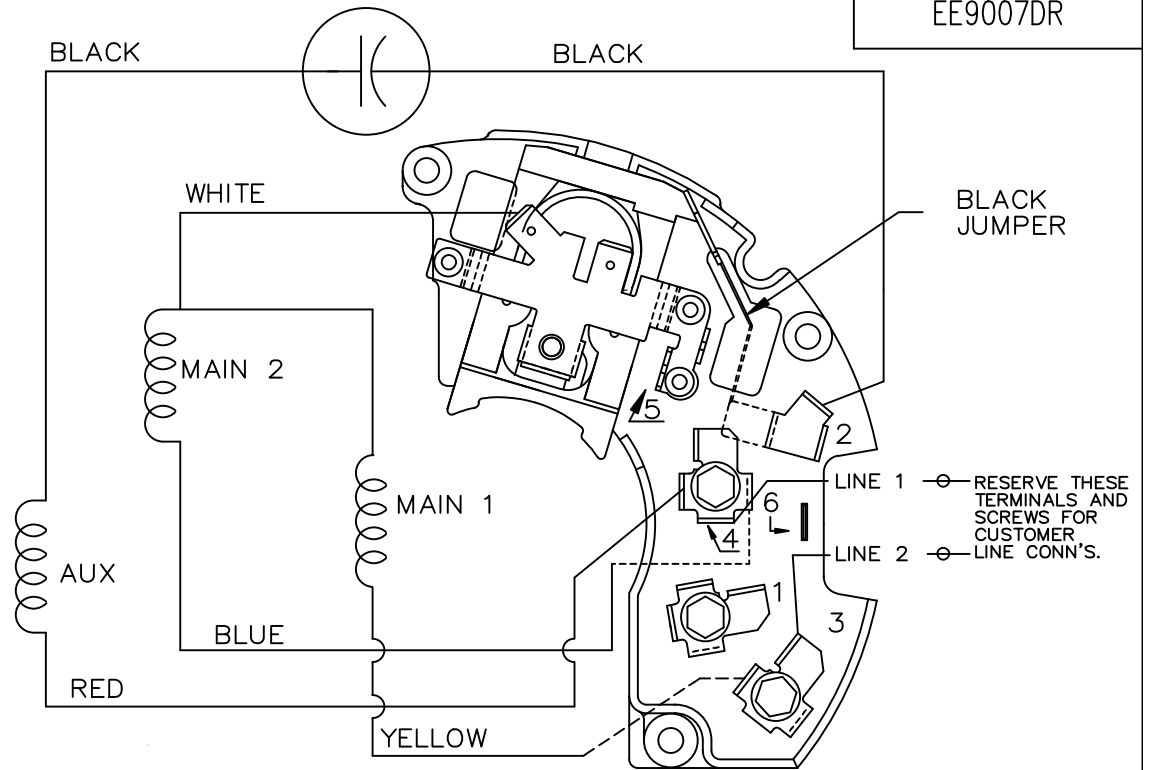
FINISH

DRAWN	RM 3/11/1992
CHK	ML 3/11/1992
APPD	GK 3/11/1992
SCALE	3=8
REF	
FMF	
PREV	

THIS DRAWING IN DESIGN AND DETAIL IS OUR PROPERTY AND MUST NOT BE USED EXCEPT IN CONNECTION WITH OUR WORK ALL RIGHTS OF DESIGN AND INVENTION ARE RESERVED THIS IS AN ELECTRONICALLY GENERATED DOCUMENT - DO NOT SCALE THIS PRINT

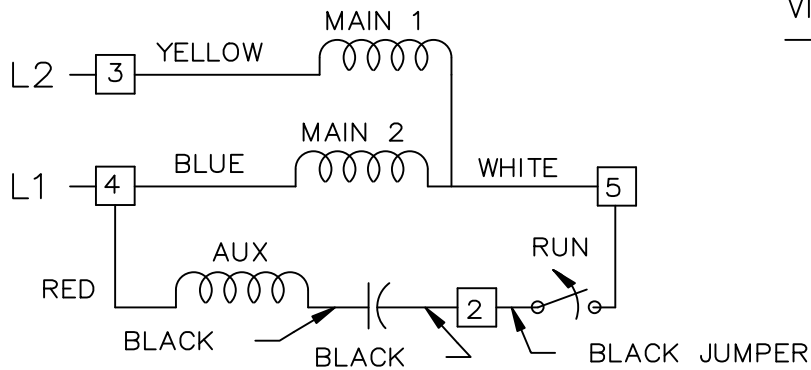
RFP	CAD FILE SS75534
DIST WP	

SIZE	DRAWING NO.	PAGE	1 OF 1	REV.
A	SS75534			4




SINGLE HIGH VOLTAGE CAPACITOR START
REVERSIBLE ON TERM BOARD
NO OVERLOAD PROTECTION

VIEWING TERM END



CCW ROTATION SHOWN

TO REVERSE ROTATION INTERCHANGE
RED LEAD WITH BLACK LEAD

		TOLERANCES UNLESS SPECIFIED		 REGAL-BELOIT CORPORATION	DRAWN						
		DEC.	INCHES		CHK						
		.X	± -		APPD	TJW 5/26/2010					
		.XX	± -			CTO 5/26/2010					
		.XXX	± -			EH 5/26/2010					
		.XXXX	± -								
NO.	REVISION	BY & DATE	CHK	ANG	FINISH	SCALE					
						REF					
						FMF ISAAC10-2134					
						PREV					
THIS DRAWING IN DESIGN AND DETAIL IS OUR PROPERTY AND MUST NOT BE USED EXCEPT IN CONNECTION WITH OUR WORK ALL RIGHTS OF DESIGN AND INVENTION ARE RESERVED THIS IS AN ELECTRONICALLY GENERATED DOCUMENT - DO NOT SCALE THIS PRINT			RFP	5/26/2010	CAD FILE	EE9007DR	SIZE	DRAWING NO.	PAGE	OF	REV.
			DIST				A	EE9007DR			

** Subject to change without notice.



REGAL REXNORD CORPORATION
TYPICAL PERFORMANCE CURVE for AC MOTOR

Customer

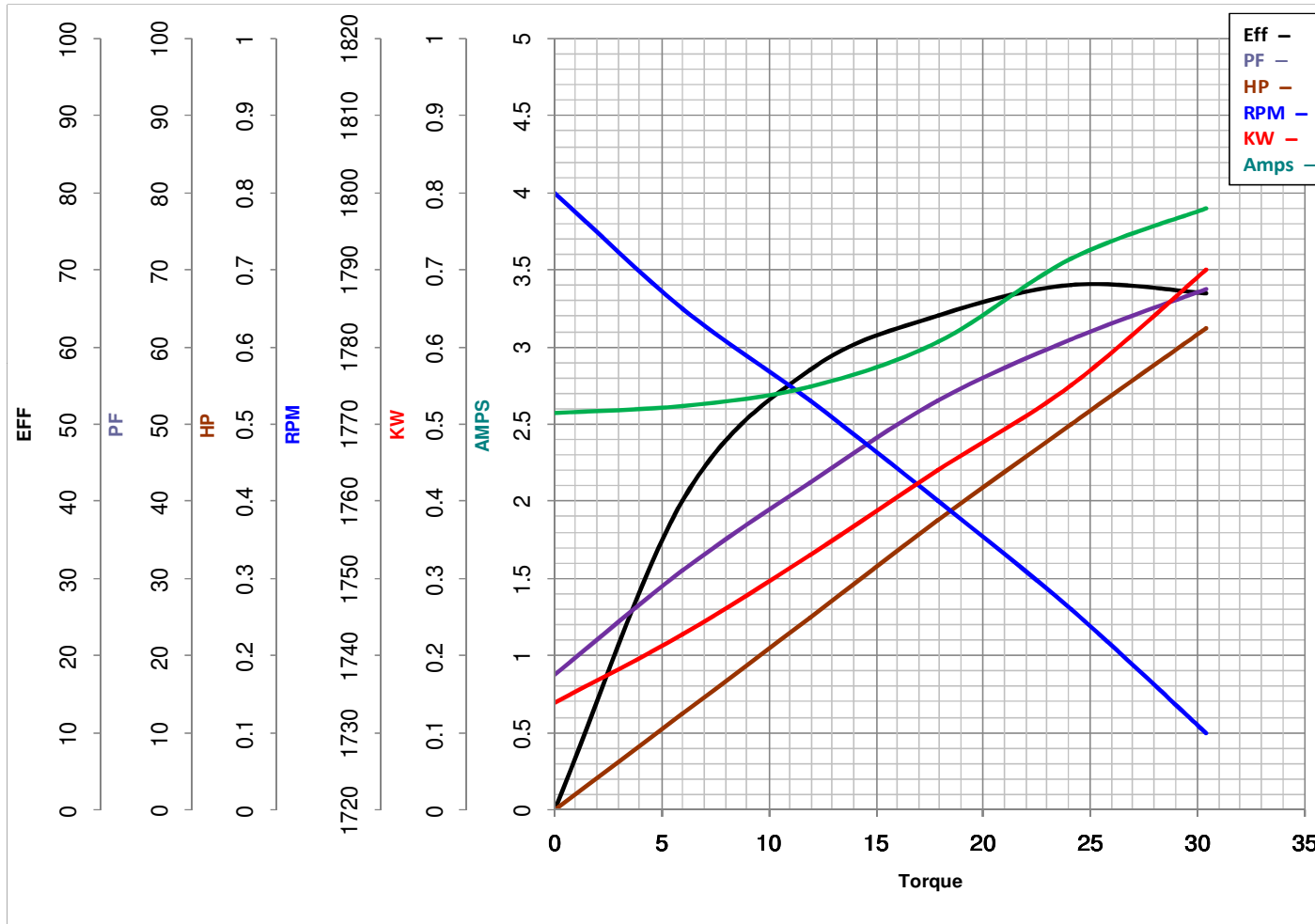
Curve at 277 Volts HP 0.50 PHASE 1
60 HZ
0.5 HP VOLTS 277

Model No 56C17D2113

Catalog No B608

HZ 60

RPM 1725



Torque in Oz.Ft

FL TORQUE 24.1 Oz.Ft
BD TORQUE 62.1 Oz.Ft
LR TORQUE 97.6 Oz.Ft

FL AMPS 3.55
PU TORQUE 53.5 Oz.Ft
LR AMPS 17.27

WINDING CE48461-4

Date 1/7/2019