

# PRODUCT INFORMATION PACKET



Model No: 056C17G15556

Catalog No: G654A

Explosion Proof Motor, 0.50 HP, 1 Ph, 60 Hz, 115/230 V, 1800 RPM, 56 Frame, EPFC

**Operational at 115/208-230 V @60HZ**



Regal and LEESON are trademarks of Regal Rexnord Corporation or one of its affiliated companies.  
©2025 Regal Rexnord Corporation, All Rights Reserved. MC017097E





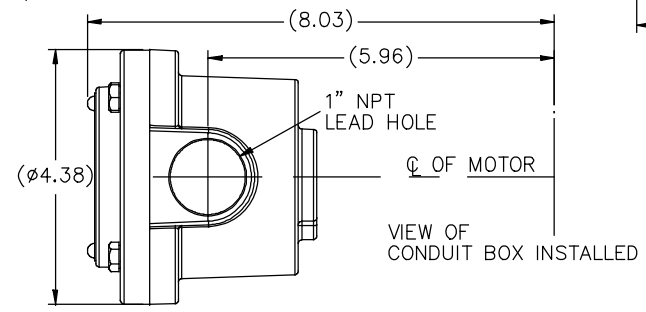
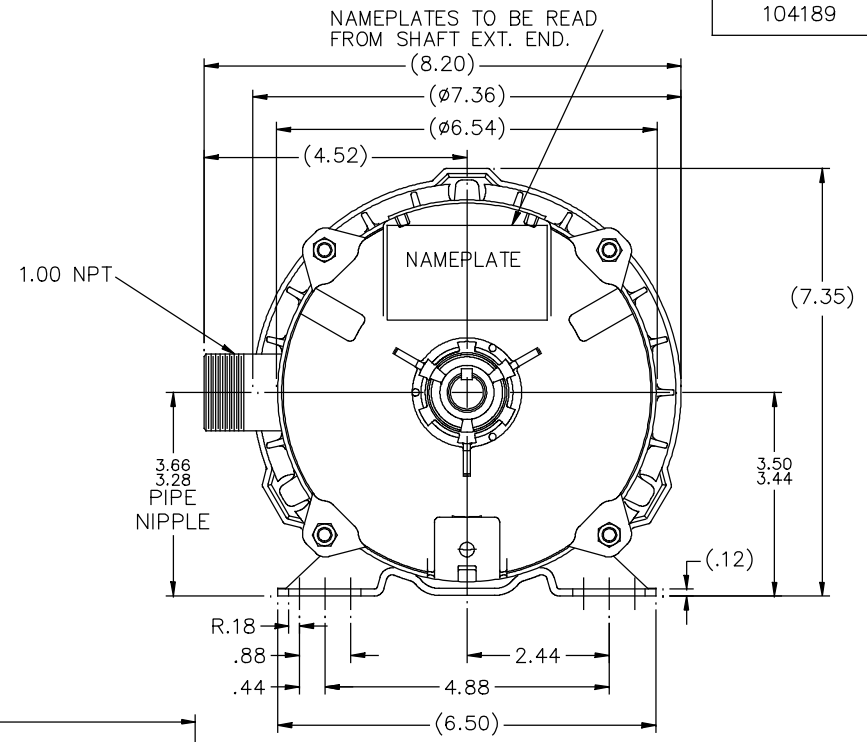
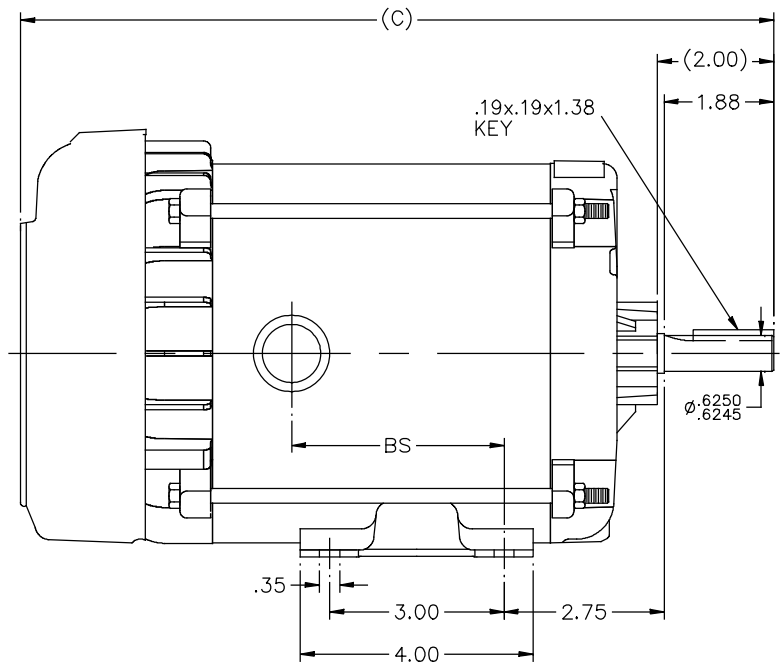
### Nameplate Specifications

Phase	1	Output HP	0.50 Hp
Output KW	0.37 kW	Voltage	115/230 V
Speed	1725 rpm	Service Factor	1.00
Frame	56	Enclosure	Explosion Proof Fan cooled
Thermal Protection	Automatic	Efficiency	66 %
Ambient Temperature	40 °C	Frequency	60 Hz
Current	8.8/4.4 A	Power Factor	58
Duty	Continuous	Insulation Class	B
Design Code	NO DESIGN CODE	KVA Code	L
Drive End Bearing Size	6203	Opp Drive End Bearing Size	6203
UL	UL Listed And CSA Certified	CSA	Y
CE	N	IP Code	54
Number of Speeds	1	Hazardous Location	DIV 1 EXP PROOF CL I GR CD CL II GR EFG T3B

### Technical Specifications

Electrical Type	Capacitor Start Induction Run	Starting Method	Across The Line
Poles	4	Rotation	Selective Counterclockwise
Resistance Main	0 Ohms	Mounting	Rigid Base
Motor Orientation	Horizontal	Drive End Bearing	Ball
Opp Drive End Bearing	Ball	Frame Material	Rolled Steel
Shaft Type	NEMA 56	Overall Length	13.94 in
Frame Length	6.81 in	Shaft Diameter	0.625 in
Shaft Extension	1.88 in	Assembly/Box Mounting	F1 ONLY
Outline Drawing	104189-681	Connection Drawing	A-102005-84

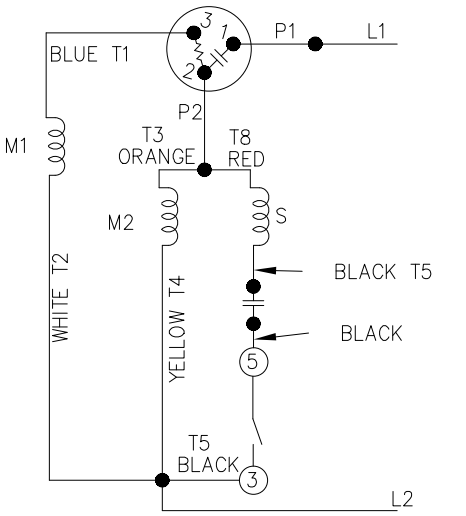
104189



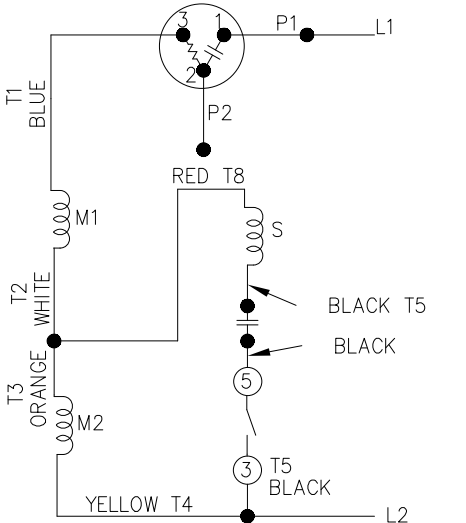
DASH	(C)	BS			
631	13.44	4.15			
681	13.94	4.65			
731	14.44	5.15			
781	14.94	5.65			
831	15.44	6.15			
881	15.94	6.65			
931	16.44	7.15			
981	16.94	7.65			

			TOLERANCES UNLESS SPECIFIED		REGAL™ Regal Beloit America, Inc.		DRAWN MH 11-20-1996		
			DEC.	INCHES			CHK	ML 12-02-1996	
4	COND. BOX INSTALLED VIEW UPDATED PER ECR-0044571	UD 10/15/13	ST	.X	±.1			APPD GK 12-02-1996	
3	REVISED C'BOX PER CN40784A	JJB 02/23/2007	ML	.XX	±.03	TITLE OUTLINE		SCALE 1=2	
2	ADDED CONDUIT BOX VIEW CN 26686	MRB 03-22-1998		.XXX	±.005	56 FR. - EXP. PR. - TEFC - 1Ø & 3Ø		REF	
1	NEW DRAWING CN 23099	MH 12-02-1996		.XXXX	±.0005	MAT'L		FMF	
NO.	REVISION	BY & DATE	CHK	ANG	±.750"	FINISH		PREV	
THIS DRAWING IN DESIGN AND DETAIL IS OUR PROPERTY AND MUST NOT BE USED EXCEPT IN CONNECTION WITH OUR WORK. ALL RIGHTS OF DESIGN AND INVENTION ARE RESERVED. THIS IS AN ELECTRONICALLY GENERATED DOCUMENT - DO NOT SCALE THIS PRINT			RFP	CAD FILE 104189		SIZE	DRAWING NO.	PAGE OF	REV.
			DIST	WP	B		104189	4	

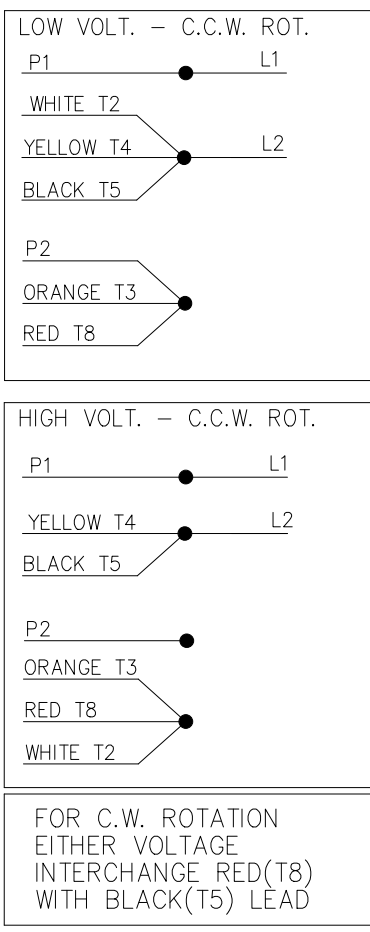
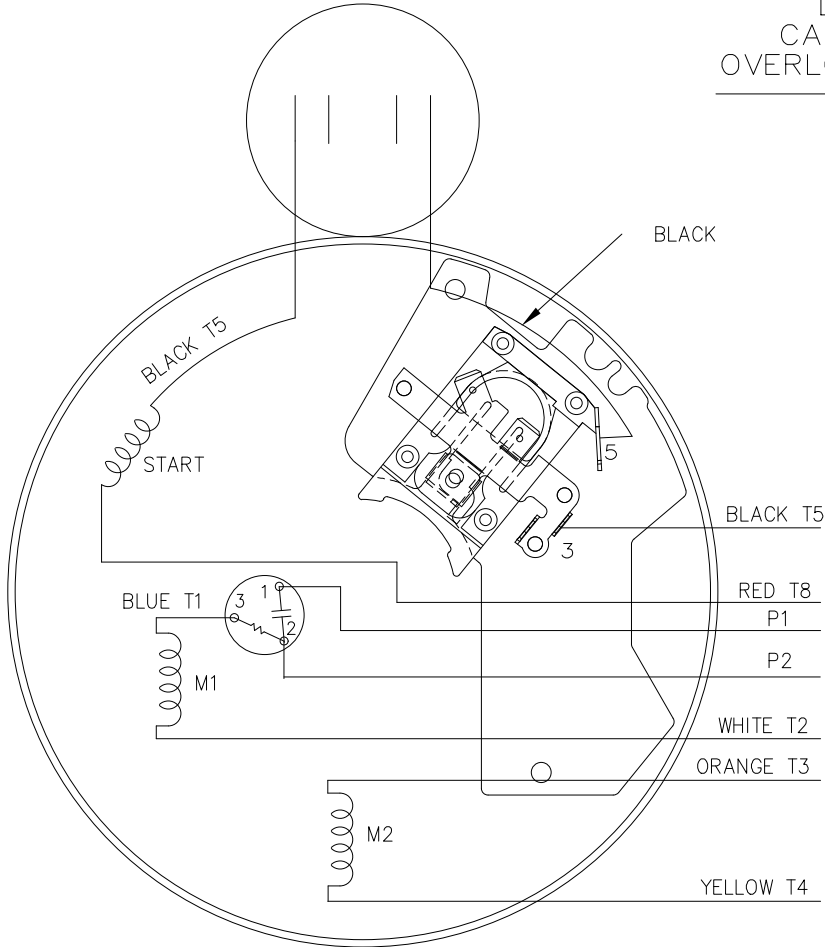
LOW VOLTAGE - C.C.W.



HIGH VOLTAGE - C.C.W.



DUAL VOLTAGE  
CAPACITOR START  
OVERLOAD SELECT ROT.



DRAWING REVISION A	REVISION BY KVDG	REV DATE/ DATE 05/28/2025
REQUEST NUMBER ECR-0243058	APPROVED BY DS	DATE 05/28/2025

REQUEST NUMBER DESCRIPTION  
UPDATED THE DRG TO RRX TEMPLATE

COPYRIGHT (PER REVISION DATE) REGAL BELOIT AMERICA, INC. ALL RIGHTS RESERVED. PROPRIETARY AND CONFIDENTIAL INFORMATION - THIS DOCUMENT IS THE PROPERTY OF REGAL BELOIT AMERICA, INC. (OWNER) AND CONTAINS OWNER'S PROPRIETARY INFORMATION. ANY PERSON, CORPORATION OR OTHER FIRM RECEIVING IT IS DEEMED, BY RECEIVING IT, TO AGREE THAT IT, AND/OR ANY PART OF IT, SHALL NOT BE DISCLOSED TO ANY PERSON, CORPORATION OR OTHER ENTITY, DUPLICATED, AND/OR USED, EXCEPT AS EXPRESSLY APPROVED IN WRITING IN ADVANCE BY OWNER. THIS DOCUMENT SHALL BE RETURNED TO OWNER UPON REQUEST. IT MAY BE SUBJECT TO CERTAIN RESTRICTIONS UNDER APPLICABLE EXPORT CONTROL LAWS AND REGULATIONS.

TOLERANCES (EXCEPT AS NOTED):  
DEC. INCH mm ANGLE  
.X ±0.1 [±3] ±0.5°  
.XX ±0.01 [±0.3]  
.XXX ±0.005 [±0.13]  
.XXXX ±0.0005 [±0.013]  
REMOVE BURRS & BREAK SHARP  
EDGES: .003/.015 [.08/.38] X 45  
CORNER FILLETS: R.02 [.5]  
MACHINED SURFACES: 125/ 3.2  
INCH mm  
mm DIMENSIONS IN [BRACKETS]  
ARE FOR REFERENCE ONLY

DRAWN BY PVR	DATE 09/27/2012
APPROVED BY	DATE
REFERENCE 102005-84	THIRD ANGLE PROJECTION

Regal Beloit America, Inc.	
DESCRIPTION CONNECTION DIAGRAM	
MAT'L	PROCESS/FINISH
SIZE B	DRAWING NUMBER 102005-84A
SHEET 1 OF 1	



**CERTIFICATION DATA SHEET**

**CUSTOMER:**

**CUSTOMER PO#:**

**ORDER #:**

**MODEL #:** 56C17G15556 A

**CONN. DIAGRAM:** A-102005-84

**CUSTOMER PART #:**

**OUTLINE:** 104189-681

**MOUNTING:** F1 ONLY

**WINDING #:** ZC404 R1 3

**TYPICAL MOTOR PERFORMANCE DATA**

HP	kW	SYNC. RPM	F.L. RPM	FRAME	ENCLOSURE	KVA CODE	DESIGN
1/2	0.37	1800	1725	56	EPFC	L	NO DESIGN CODE

PH	Hz	VOLTS	AMPS	START TYPE	DUTY	INSL	S.F.	AMB°C
1	60	115/230	8.8/4.4	ACROSS THE LINE	CONTINUOUS	B3	1.00	40

FULL LOAD EFF:	66	3/4 LOAD EFF:	62.5	1/2 LOAD EFF:	54.3	GTD. EFF	ELEC. TYPE
FULL LOAD PF:	58	3/4 LOAD PF:	49.5	1/2 LOAD PF:	40.5	62	CAP START IND RUN

F.L. TORQUE	LOCKED ROTOR AMPS	L.R. TORQUE	B.D. TORQUE	F.L. RISE°C
24.1 OZ-FT	42.6 / 21.3	83.8 OZ-FT 348 %	72.3 OZ-FT 300 %	55

SOUND PRESSURE @ 3 FT.	SOUND POWER	ROTOR WK^2	MAX. WK^2	SAFE STALL TIME	STARTS / HOUR	APPROX. MOTOR WGT
- dBA	- dBA	- LB-FT^2	- LB-FT^2	10 SEC.	-	29 LBS.

**\*\*\* SUPPLEMENTAL INFORMATION \*\*\***

DE BRACKET TYPE	ODE BRACKET TYPE	MOUNT TYPE	ORIENTATION	SEVERE DUTY	HAZARDOUS LOCATION	DRIP COVER	SCREENS	PAINT
STANDARD	STANDARD	RIGID	HORIZONTAL	FALSE	DIV 1 EXP PROOF CL I GR CD CL II GR EFG T3B	FALSE	NONE	GRAY (POWDER)

BEARINGS		GREASE	SHAFT TYPE	SPECIAL DE	SPECIAL ODE	SHAFT MATERIAL	FRAME MATERIAL
DE	ODE						
BALL	BALL	POLYREX EM	STANDARD 56	NONE	NONE	1144 STRESSPROOF (C-223)	ROLLED STEEL
6203	6203						

THERMO-PROTECTORS				THERMISTORS	CONTROL	SPACE HEATERS
THERMOSTATS	PROTECTORS	WDG RTDs	BRG RTDs			
NONE	AUTOMATIC	NONE	NONE	NONE	FALSE	NONE VOLTS

\*  
N  
O  
T  
E  
S  
\*

<b>INVERTER TORQUE:</b> NONE
<b>INV. HP SPEED RANGE:</b> NONE
<b>ENCODER:</b> NONE
NONE NONE
NONE NONE PPR
<b>BRAKE:</b> NONE NONE
NONE P/N NONE
NONE NONE
NONE FT-LB NONE V NONE Hz

**PREPARED BY:** Venkata Datta Ganesh Kothapalli **DATE:** 04/10/2025 07:05:49 AM

FORM 3531 REV.3 02/07/99

\*\* Subject to change without notice.

REV 1 - CHANGED LOGO FROM MARATHON TO LEESON - 3/25/2025



**REGAL REXNORD CORPORATION**  
TYPICAL PERFORMANCE CURVE for AC MOTOR

Customer

Curve at

230  
60  
0.5

Volts  
HZ  
HP

HP 0.50

PHASE 1

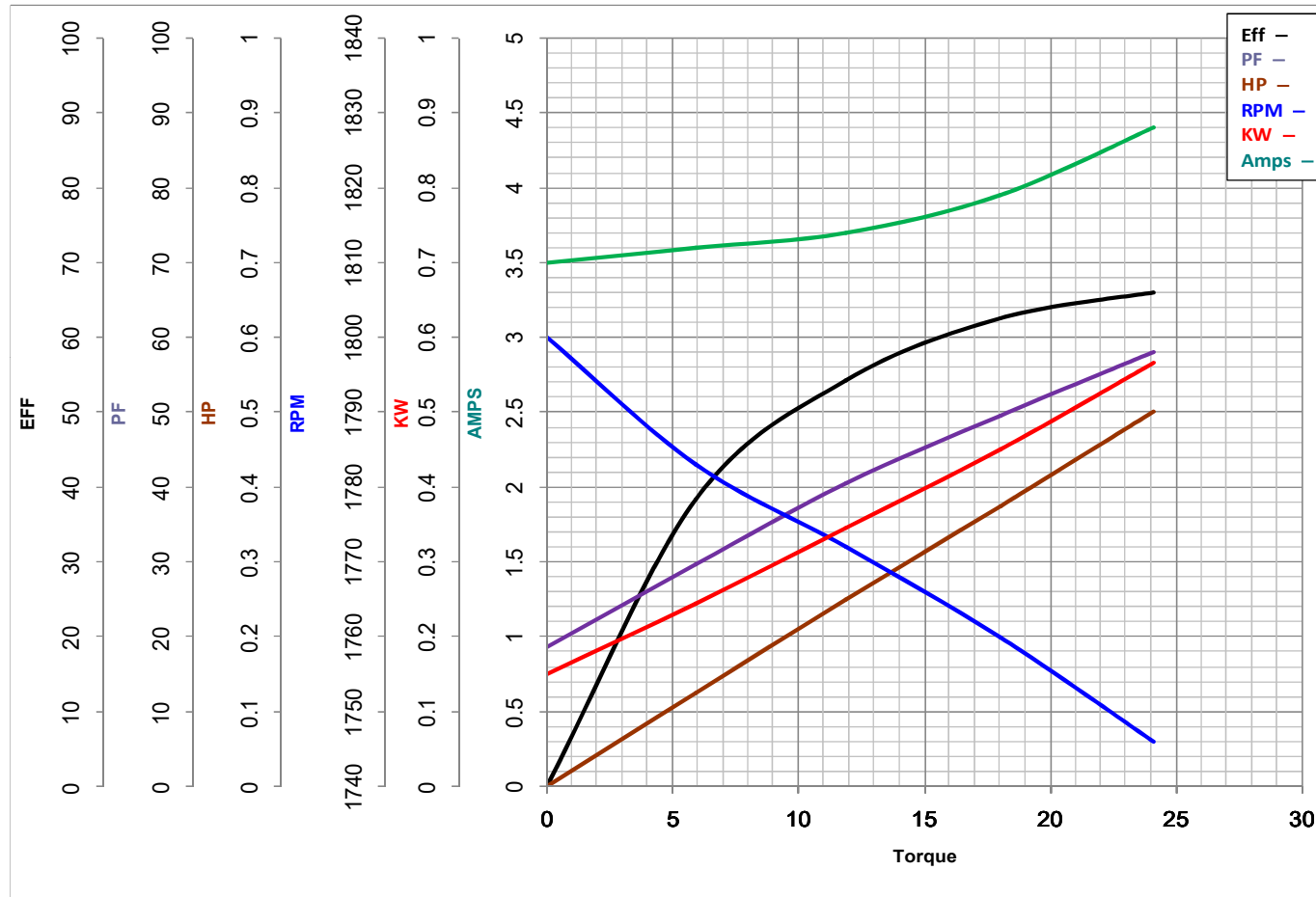
Model No 56C17G15556

VOLTS 115/208-230

Catalog No G654A

HZ 60

RPM 1725



Torque in Oz.Ft

FL TORQUE 24.1 Oz.Ft  
BD TORQUE 72.3 Oz.Ft  
LR TORQUE 83.8 Oz.Ft

FL AMPS 8.8/4.2-4.4  
PU TORQUE 61.2 Oz.Ft  
LR AMPS 21.3

WINDING ZC404-3

Date 11/6/2018