

# PRODUCT INFORMATION PACKET



Model No: 056C17G5320

Catalog No: G853

Explosion Proof Motor, 0.33 HP, 1 Ph, 60 Hz, 115/230 V, 1800 RPM, 56C Frame, EPFC

**Operational at 115/208-230 V @60HZ**



Regal and LEESON are trademarks of Regal Rexnord Corporation or one of its affiliated companies.  
©2025 Regal Rexnord Corporation, All Rights Reserved. MC017097E





### Nameplate Specifications

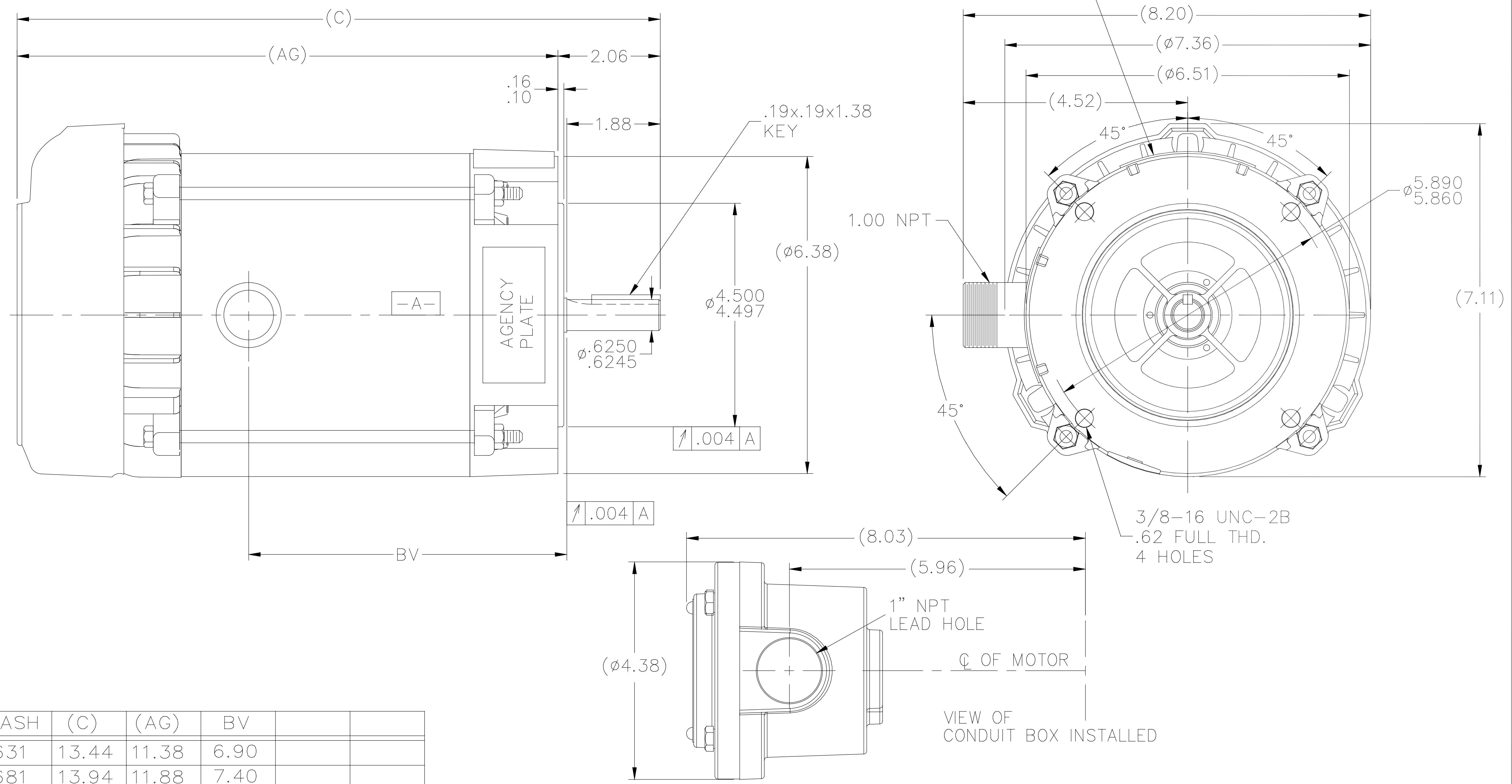
Phase	1	Output HP	0.33 Hp
Output KW	0.25 kW	Voltage	115/230 V
Speed	1725 rpm	Service Factor	1.00
Frame	56C	Enclosure	Explosion Proof Fan cooled
Thermal Protection	Automatic	Efficiency	55 %
Ambient Temperature	40 °C	Frequency	60 Hz
Current	6.6/3.3 A	Power Factor	60
Duty	Continuous	Insulation Class	B
Design Code	NO DESIGN CODE	KVA Code	N
Drive End Bearing Size	6203	Opp Drive End Bearing Size	6203
UL	UL Listed And CSA Certified	CSA	Y
CE	N	IP Code	54
Number of Speeds	1	Hazardous Location	DIV 1 EXP PROOF CL I GR CD CL II GR FG T3B

### Technical Specifications

Electrical Type	Capacitor Start Induction Run	Starting Method	Across The Line
Poles	4	Rotation	Selective Counterclockwise
Resistance Main	0 Ohms	Mounting	Round
Motor Orientation	Horizontal	Drive End Bearing	Ball
Opp Drive End Bearing	Ball	Frame Material	Rolled Steel
Shaft Type	NEMA 56	Overall Length	13.44 in
Frame Length	6.31 in	Shaft Diameter	0.625 in
Shaft Extension	2.06 in	Assembly/Box Mounting	F1 ONLY
Connection Drawing	102005-84	Outline Drawing	B-104188-631

104188

NAMEPLATES TO BE READ FROM SHAFT EXT. END.



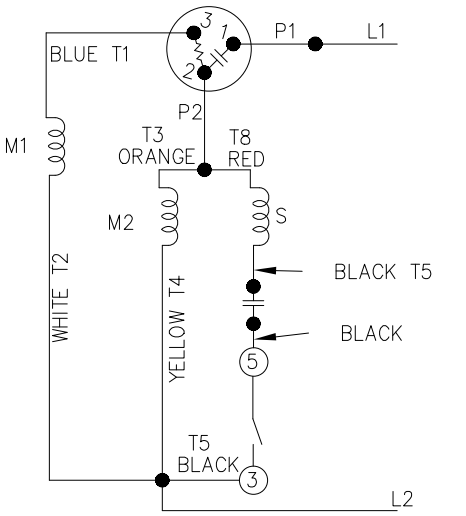
DASH	(C)	(AG)	BV		
631	13.44	11.38	6.90		
681	13.94	11.88	7.40		
731	14.44	12.38	7.90		
781	14.94	12.88	8.40		
831	15.44	13.38	8.90		
881	15.94	13.88	9.40		
931	16.44	14.38	9.90		
981	16.94	14.88	10.40		

NO.	REVISION	BY & DATE	CHK	ANG	TOLERANCES UNLESS SPECIFIED		FINISH	DRAWN	ML	GK	SCALE	REV.
					DEC.	INCHES						
6		SL 09/15/15										
5	COND. BOX INSTALLED VIEW UPDATED PER ECR-0044571	UD 10/10/13	ST									
4	REVISED C'BOX PER CN40784A	JJB 02/23/2007	ML	.X	±.1							
3	REDRAWN IN AUTOCAD	TAT 06-28-2004	ML	.XX	±.03							
2	ADDED CONDUIT BOX VIEW CN 26686	MRB 03-22-1999		.XXX	±.005							
1	NEW DRAWING CN 23099	MH 12-02-1996	SM	.XXXX	±.0005							
THIS DRAWING IN DESIGN AND DETAIL IS OUR PROPERTY AND MUST NOT BE USED EXCEPT IN CONNECTION WITH OUR WORK ALL RIGHTS OF DESIGN AND INVENTION ARE RESERVED THIS IS AN ELECTRONICALLY GENERATED DOCUMENT - DO NOT SCALE THIS PRINT							RFP	CAD FILE 104188	SIZE B	DRAWING NO. 104188	PAGE OF 6	REV. 6

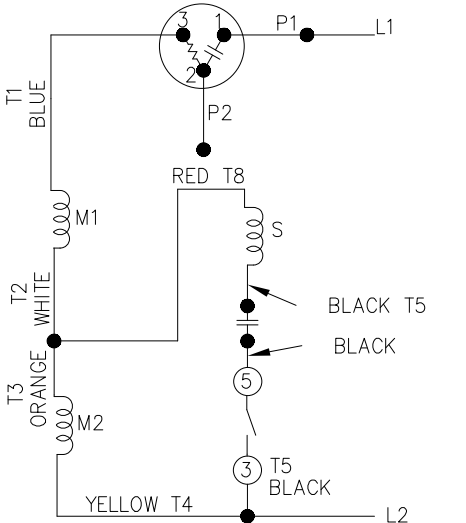
**REGAL™** Regal Beloit America, Inc.

TITLE OUTLINE - 'C' FACE  
56C/145TCZ FR - EXP PR.

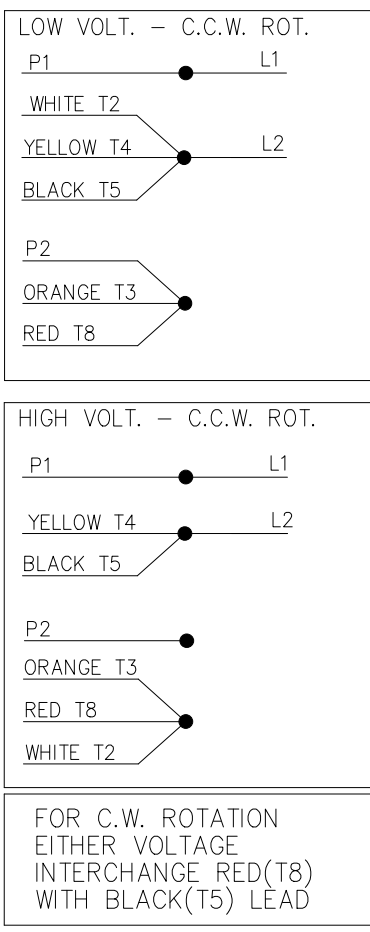
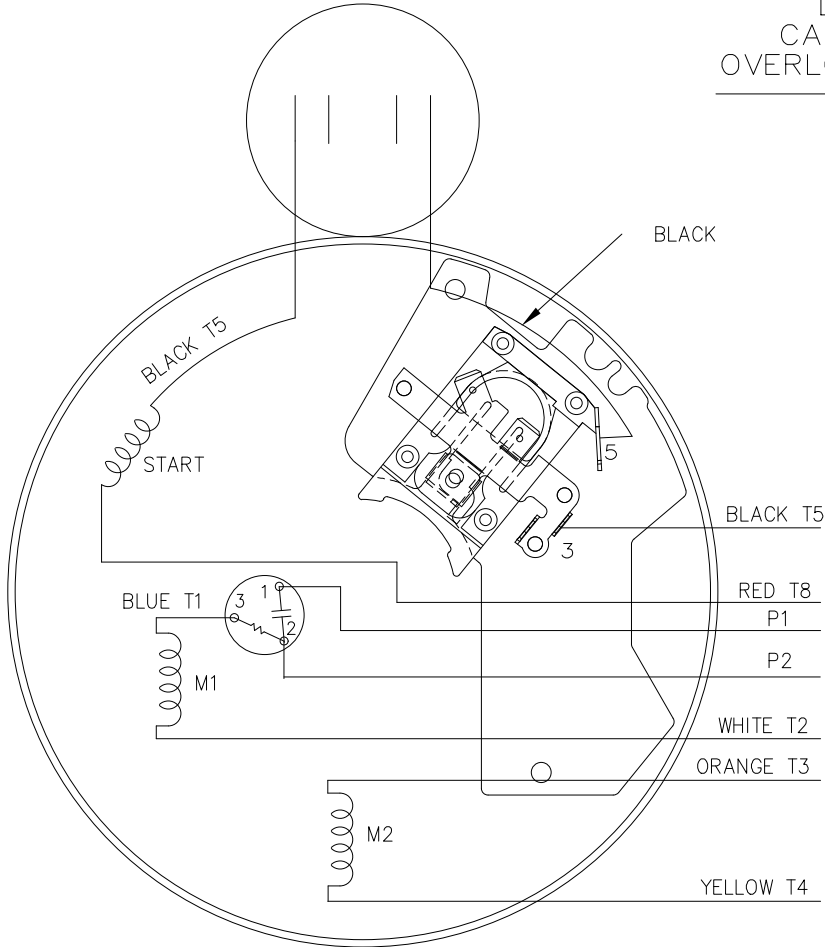
LOW VOLTAGE - C.C.W.



HIGH VOLTAGE - C.C.W.



DUAL VOLTAGE  
CAPACITOR START  
OVERLOAD SELECT ROT.



DRAWING REVISION A	REVISION BY KVDG	REV DATE/ DATE 05/28/2025	TOLERANCES (EXCEPT AS NOTED): DEC. INCH mm ANGLE .X ±0.1 [±3] ±0.5° .XX ±0.01 [±0.3] .XXX ±0.005 [±0.13] .XXXX ±0.0005 [±0.013]	DRAWN BY PVR	Regal Beloit America, Inc.
REQUEST NUMBER ECR-0243058	APPROVED BY DS	DATE 05/28/2025	REMOVE BURRS & BREAK SHARP EDGES: .003/.015 [.08/.38] X 45 CORNER FILLETS: R.02 [.5] MACHINED SURFACES: 125/ 3.2 INCH mm	DATE 09/27/2012	
REQUEST NUMBER DESCRIPTION UPDATED THE DRG TO RRX TEMPLATE				APPROVED BY	DESCRIPTION CONNECTION DIAGRAM
<small>COPYRIGHT (PER REVISION DATE) REGAL BELOIT AMERICA, INC. ALL RIGHTS RESERVED. PROPRIETARY AND CONFIDENTIAL INFORMATION - THIS DOCUMENT IS THE PROPERTY OF REGAL BELOIT AMERICA, INC. (OWNER) AND CONTAINS OWNER'S PROPRIETARY INFORMATION. ANY PERSON, CORPORATION OR OTHER FIRM RECEIVING IT IS DEEMED, BY RECEIVING IT, TO AGREE THAT IT, AND/OR ANY PART OF IT, SHALL NOT BE DISCLOSED TO ANY PERSON, CORPORATION OR OTHER ENTITY, DUPLICATED, AND/OR USED, EXCEPT AS EXPRESSLY APPROVED IN WRITING IN ADVANCE BY OWNER. THIS DOCUMENT SHALL BE RETURNED TO OWNER UPON REQUEST. IT MAY BE SUBJECT TO CERTAIN RESTRICTIONS UNDER APPLICABLE EXPORT CONTROL LAWS AND REGULATIONS.</small>				DATE	MAT'L
			mm DIMENSIONS IN [BRACKETS] ARE FOR REFERENCE ONLY	REFERENCE 102005-84	PROCESS/FINISH
				THIRD ANGLE PROJECTION	SIZE B
					DRAWING NUMBER 102005-84A
					SHEET 1 OF 1







**REGAL REXNORD CORPORATION**  
TYPICAL PERFORMANCE CURVE for AC MOTOR

Customer

Curve at 230 Volts  
60 HZ  
0.33 HP

HP 0.33

PHASE 1

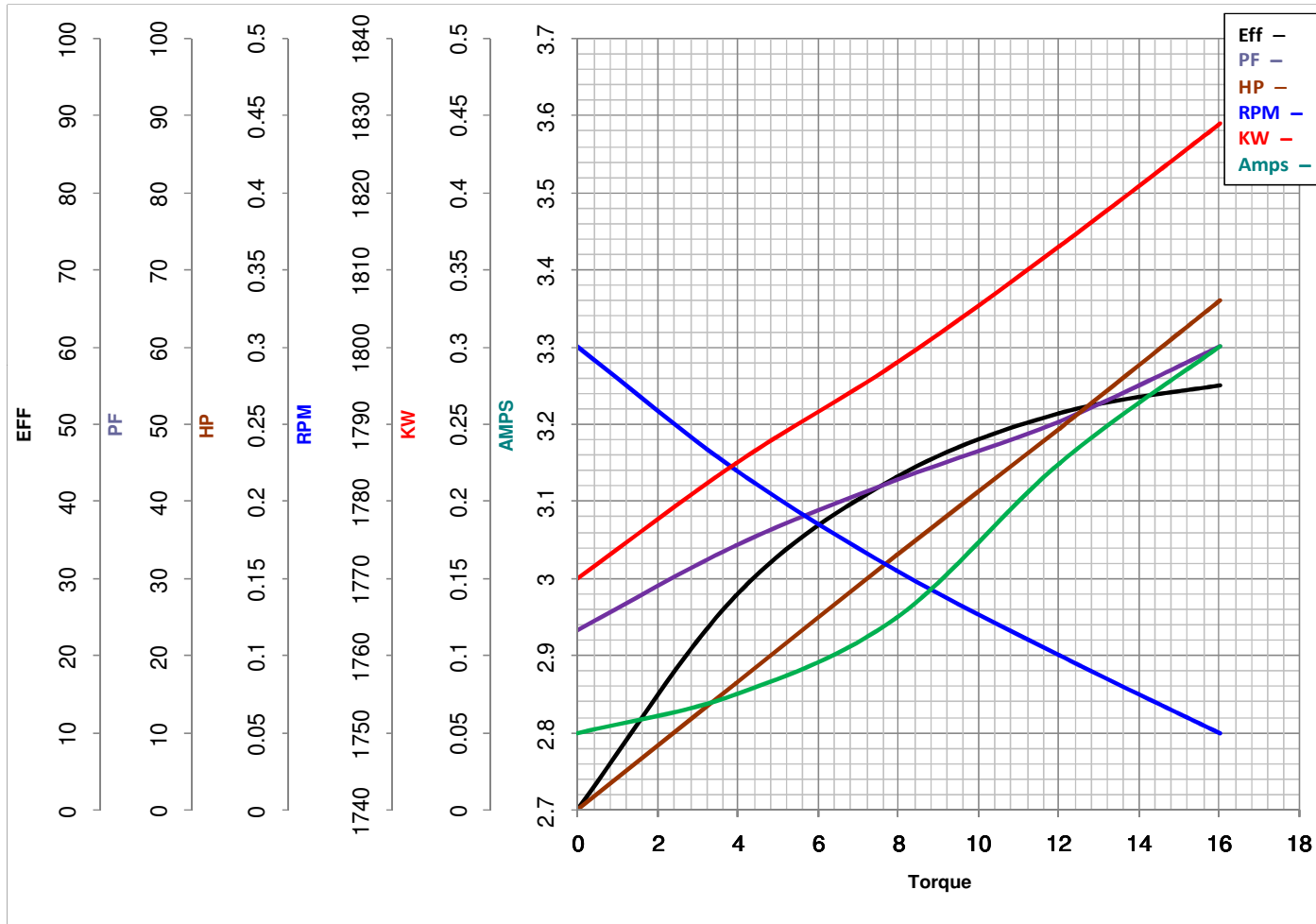
Model No 56C17G5320

VOLTS 115/208-230

Catalog No G853

HZ 60

RPM 1725



Torque in Oz.Ft

FL TORQUE 16 Oz.Ft  
BD TORQUE 44.6 Oz.Ft  
LR TORQUE 55.7 Oz.Ft

FL AMPS 6.6/3.1-3.3  
PU TORQUE 39.9 Oz.Ft  
LR AMPS 16.2

WINDING ZC406-3

Date 1/10/2019