

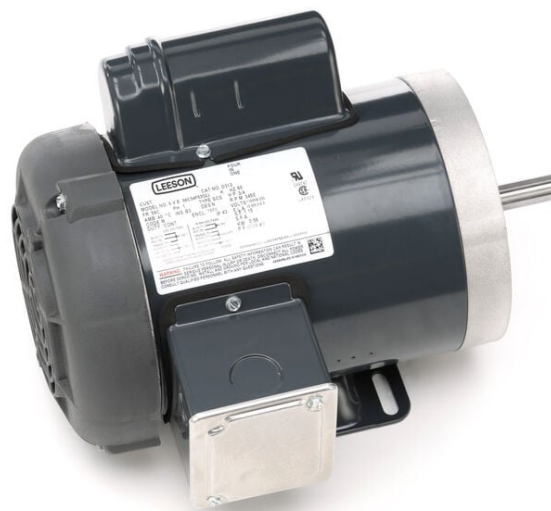
# PRODUCT INFORMATION PACKET



Model No: 056C34F5302

Catalog No: D312

General Purpose Motor, 0.75 HP, 1 Ph, 60 Hz, 115/208-230 V, 3600 RPM, 56C Frame, TEFC



Regal and LEESON are trademarks of Regal Rexnord Corporation or one of its affiliated companies.  
©2025 Regal Rexnord Corporation, All Rights Reserved. MC017097E



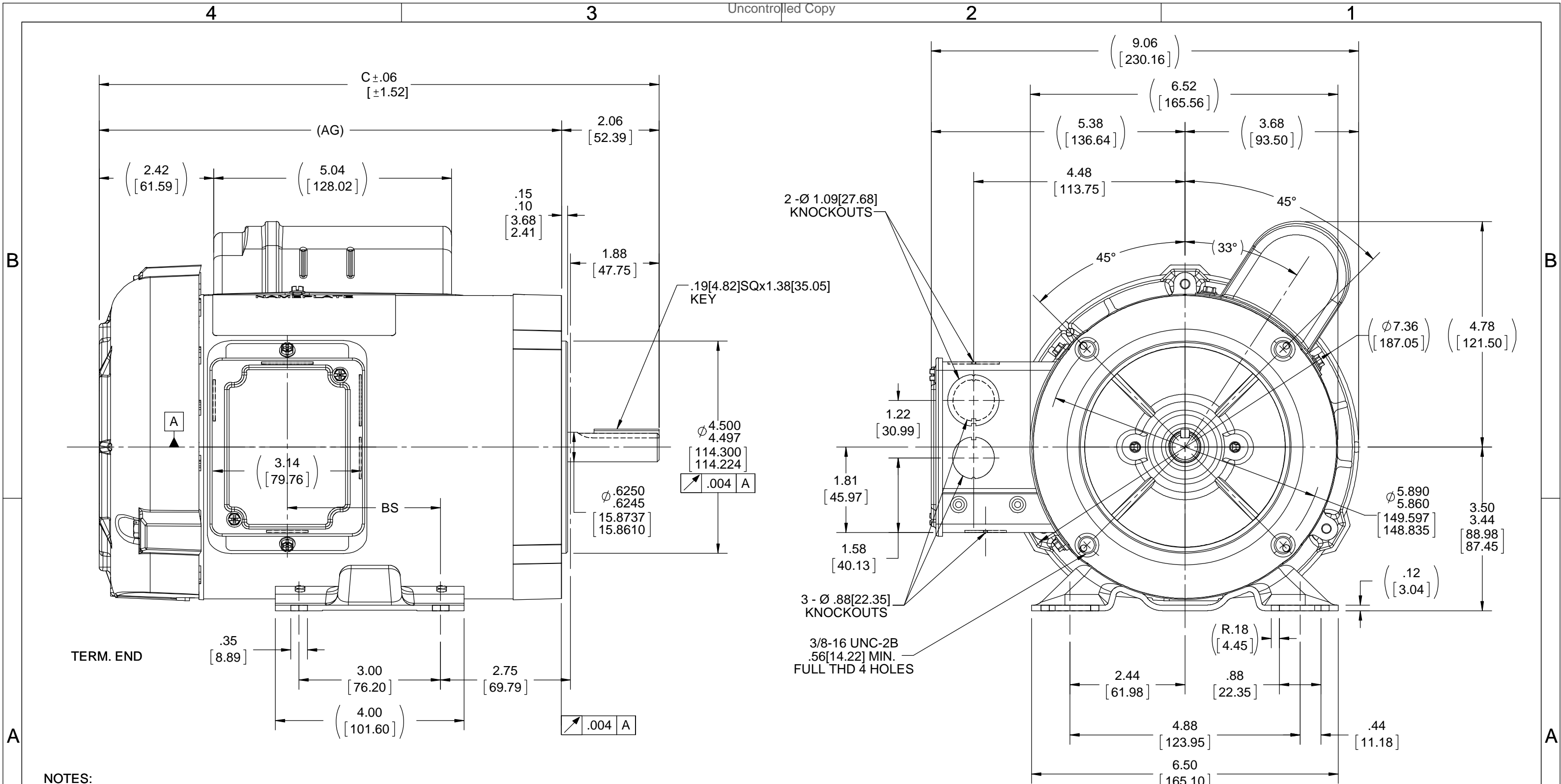


### Nameplate Specifications

Phase	1	Output HP	0.75 Hp
Output KW	0.56 kW	Voltage	115/208-230 V
Speed	3450 rpm	Service Factor	1.15
Frame	56C	Enclosure	Totally Enclosed Fan Cooled
Thermal Protection	No Protection	Efficiency	66 %
Ambient Temperature	40 °C	Frequency	60 Hz
Current	10.6/5.3-5.3 A	Power Factor	71.9
Duty	Continuous	Insulation Class	B
Design Code	N	KVA Code	M
Drive End Bearing Size	6203	Opp Drive End Bearing Size	6203
UL	Recognized	CSA	Y
CE	N	IP Code	43
Number of Speeds	1		

### Technical Specifications

Electrical Type	Capacitor Start Induction Run	Starting Method	Across The Line
Poles	2	Rotation	Selective Counterclockwise
Resistance Main	0 Ohms	Mounting	Bolt-on Base
Motor Orientation	Horizontal	Drive End Bearing	Ball
Opp Drive End Bearing	Ball	Frame Material	Rolled Steel
Shaft Type	T	Overall Length	12.31 in
Shaft Diameter	0.625 in	Shaft Extension	1.88 in
Assembly/Box Mounting	F1 ONLY		
Outline Drawing	A-100143-706	Connection Drawing	102005-51



NOTES:  
 1.CONDUIT BOX CAN BE ROTATED 180°.  
 2.REMOVABLE BASE.  
 3.NAMEPLATE READ FROM COND. BOX SIDE OF MOTOR.

DASH	C	AG	BS
656	11.86 [301.24]	9.80 [248.92]	3.25 [82.55]
706	12.36 [313.94]	10.30 [261.62]	3.75 [95.25]
756	12.86 [326.64]	10.80 [274.32]	4.25 [107.95]

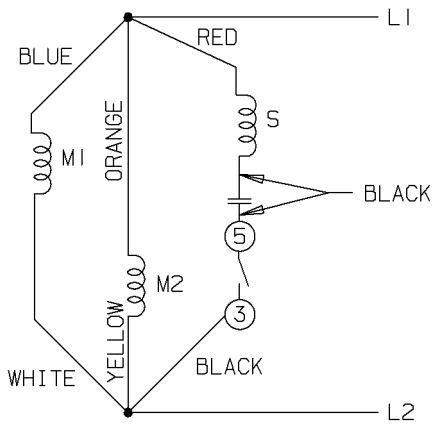
DRAWING REVISION G	REVISION BY H. ADIKE	DATE 8-23-2018
ECO ECO-0152983	APPROVED BY JD	DATE 9-20-2018
ECO DESCRIPTION <b>OUTLINE CONVERSION PROJECT</b> <small>COPYRIGHT REGAL BELOIT AMERICA, INC. ALL RIGHTS RESERVED.                  PROPRIETARY AND CONFIDENTIAL INFORMATION - THIS DOCUMENT IS THE PROPERTY OF                  REGAL BELOIT AMERICA, INC. ("OWNER") AND CONTAINS OWNER'S PROPRIETARY                  INFORMATION. ANY PERSON, CORPORATION OR OTHER FIRM RECEIVING IT IS DEEMED,                  BY RECEIVING IT, TO AGREE THAT IT, AND/OR ANY PART OF IT, SHALL NOT BE DISCLOSED                  TO ANY PERSON, CORPORATION OR OTHER ENTITY, DUPLICATED, AND/OR USED, EXCEPT                  AS EXPRESSLY APPROVED IN WRITING IN ADVANCE BY OWNER. THIS DOCUMENT SHALL                  BE RETURNED TO OWNER UPON REQUEST. IT MAY BE SUBJECT TO CERTAIN                  RESTRICTIONS UNDER APPLICABLE EXPORT CONTROL LAWS AND REGULATIONS.</small>		

TOLERANCES UNLESS OTHERWISE SPECIFIED:			
DEC.	INCH	mm	ANGLE
.X	±0.1	[±2.5]	±7° 30'
.XX	±0.03	[±0.76]	
.XXX	±0.005	[±0.127]	
.XXXX	±0.0005	[±0.0127]	
REMOVE BURRS & BREAK SHARP EDGES: .003/.015 [.076/.381] X 45° CORNER FILLETS: R.02 [.51] MACHINED SURFACES: 200 INCH/mm 5.1 mm SHOWN IN [BRACKETS]			

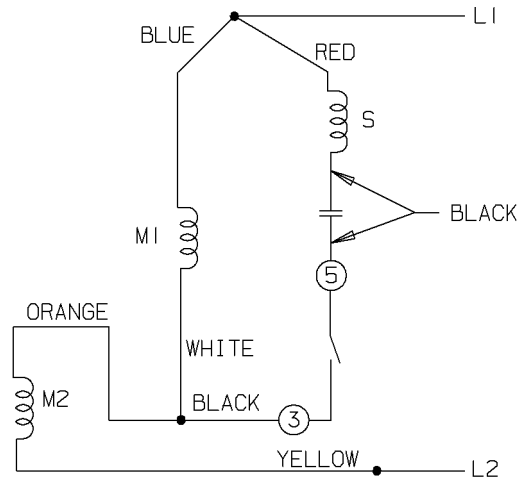
DRAWN BY BLR	DATE 05-28-1997
APPROVED BY GK	DATE 06-03-1997
REFERENCE 100143	THIRD ANGLE PROJECTION

<b>REGAL</b> ™ Regal Beloit America, Inc.	
DESCRIPTION <b>OUTLINE</b> 56 FR. -BB - TEFC - 1Ø - 'C' FACE	
MATERIAL	PROCESS/FINISH
SIZE B	DRAWING NUMBER 100143
SHEET 1 OF 1	

LOW VOLTAGE - C.C.W.

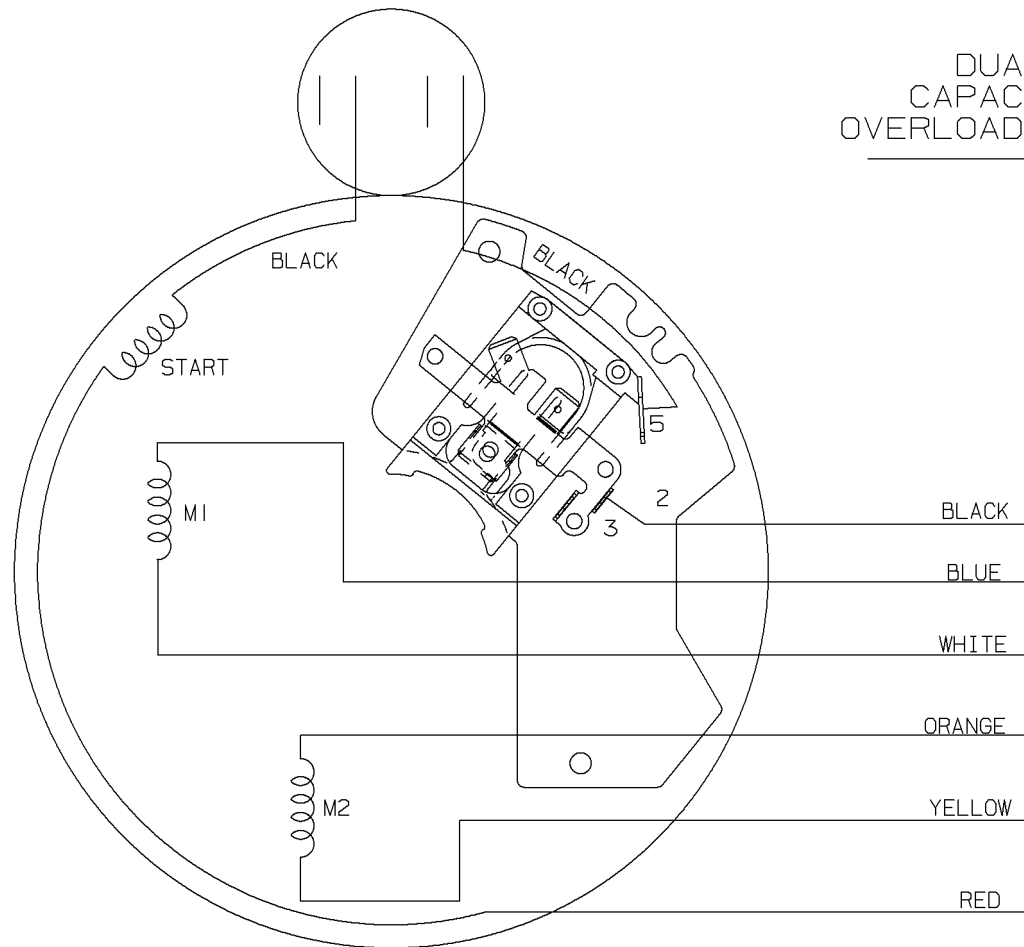


HIGH VOLTAGE - C.C.W.

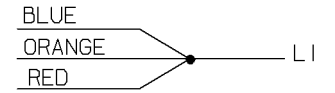


A-102005-51

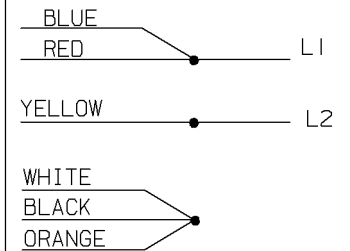
DUAL VOLTAGE  
CAPACITOR START NO  
OVERLOAD SELECT ROTATION




LOW VOLT. - C.C.W. ROT.



HIGH VOLT. - C.C.W. ROT.



FOR C.W. ROTATION EITHER  
VOLTAGE INTERCHANGE  
RED WITH BLACK LEAD

				✓ MAX. SURFACE ROUGHNESS UNLESS NOTED OTHERWISE	UNLESS OTHERWISE SPECIFIED DIMENSIONS ARE IN INCHES TOL. ON XX±    XXX±.005    XXXX±.0005    ANGLES±			
6	KVDG	CHD FROM MARATHON TO REGAL REXNORD LOGO	DS	MATL SPEC	 Regal Beloit America, Inc.	DRAWN BY	CAV	06-18-1999
5	06-17-1999	REDRAWN	CAV	FINISH		CHKD BY	ML	06-18-1999
REV	DATE	CHANGE	NAME	REFERENCE DRW.		APPD BY	GK	06-18-1999
				PART NAME	CONNECTION DIAGRAM		DRWG NO	A-102005-51

SHOP BOOK

PURCHASED

DISTRIBUTION - WA - LB - WP - LM - BR

CADD FILE NO.

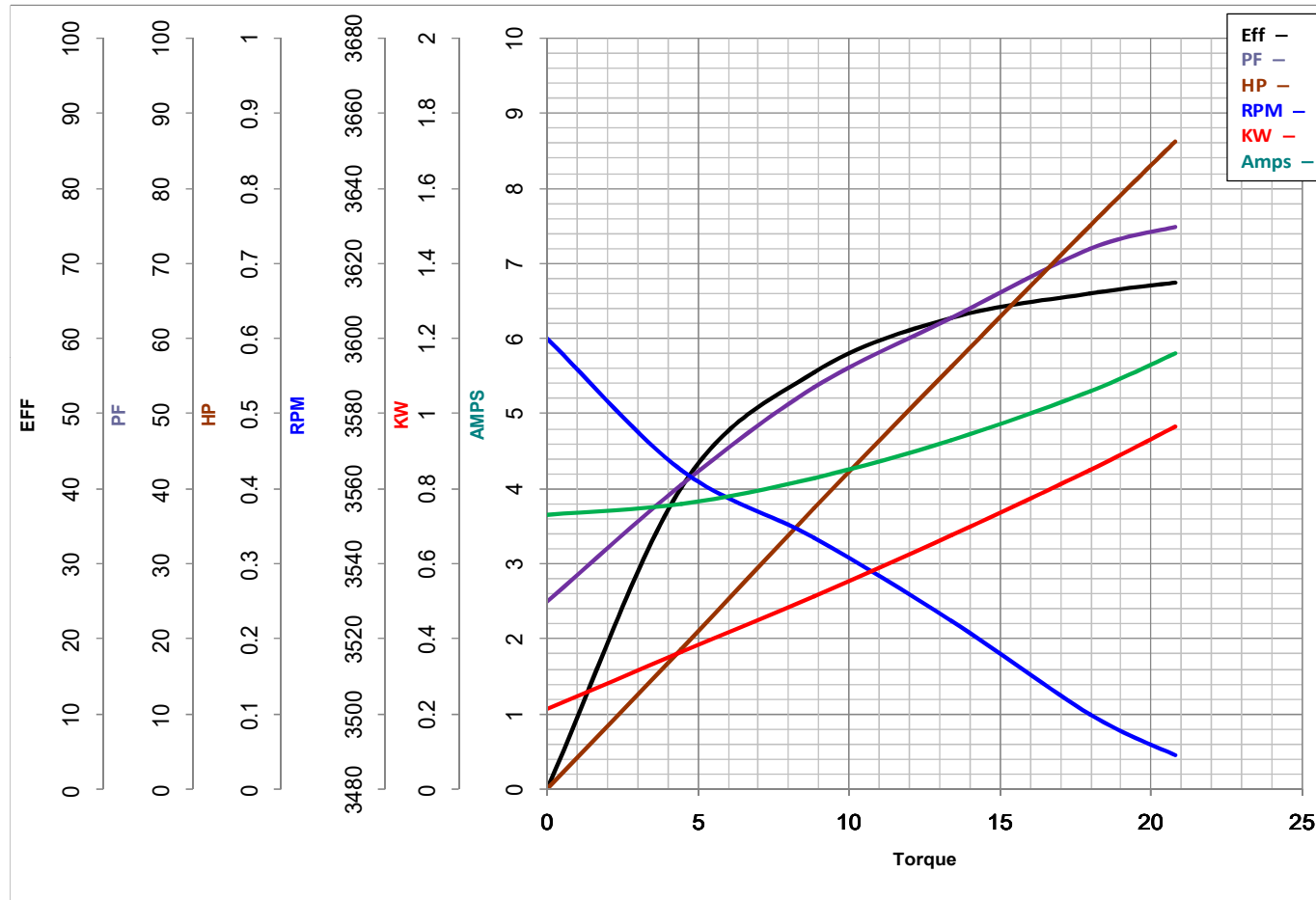
102005-51





**REGAL REXNORD CORPORATION**  
TYPICAL PERFORMANCE CURVE for AC MOTOR

Customer \_\_\_\_\_ Curve at 230 Volts HP 0.76 PHASE 1  
 Model No 56C34F5302 60 HZ  
0.75 HP VOLTS 115/208-230  
 Catalog No D312 HZ 60 RPM 3450



Torque in Oz.Ft

FL TORQUE	<u>18</u>	Oz.Ft	FL AMPS	<u>10.6/5.3-5.3</u>
BD TORQUE	<u>54.1</u>	Oz.Ft	PU TORQUE	<u>48.6</u> Oz.Ft
LR TORQUE	<u>59.6</u>	Oz.Ft	LR AMPS	<u>34.7</u>
WINDING	<u>ZC204-3</u>		Date	<u>1/11/2019</u>