

PRODUCT INFORMATION PACKET



Model No: 056T11O15570

Catalog No: X503-P

Condenser Fan Motor, 1.50 & 1 HP, 3 Ph, 60 & 50 Hz, 200-230/460 & 190/380 V, 1200 & 1000 RPM,
56Z Frame, OPAO



Regal and LEESON are trademarks of Regal Rexnord Corporation or one of its affiliated companies.
©2025 Regal Rexnord Corporation, All Rights Reserved. MC017097E



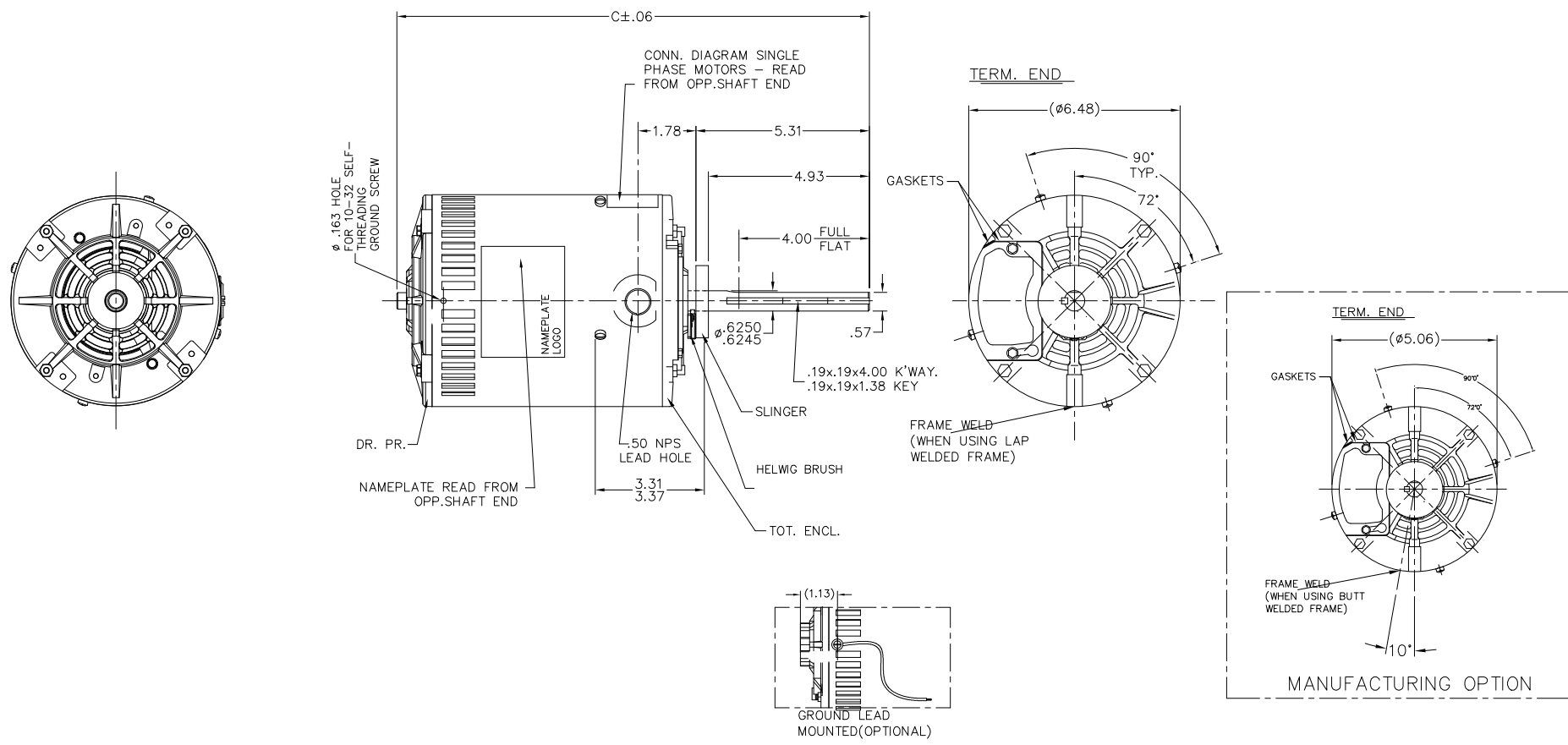


Nameplate Specifications

Phase	3	Output HP	1.50 & 1 Hp
Output KW	1.1 & 0.75 kW	Voltage	200-230/460 & 190/380 V
Speed	1140 & 950 rpm	Service Factor	1.0 & 1.0
Frame	56Z	Enclosure	Open Air Over
Thermal Protection	Automatic	Efficiency	78.5 & 78.5 %
Ambient Temperature	70 °C	Frequency	60 & 50 Hz
Current	5.5-5.4/2.7 & 4.8/2.4 A	Power Factor	68
Duty	Continuous	Insulation Class	H
Design Code	NO DESIGN CODE	KVA Code	J
Drive End Bearing Size	6203	Opp Drive End Bearing Size	6203
UL	Recognized	CSA	Y
CE	N	IP Code	10
Number of Speeds	1		

Technical Specifications

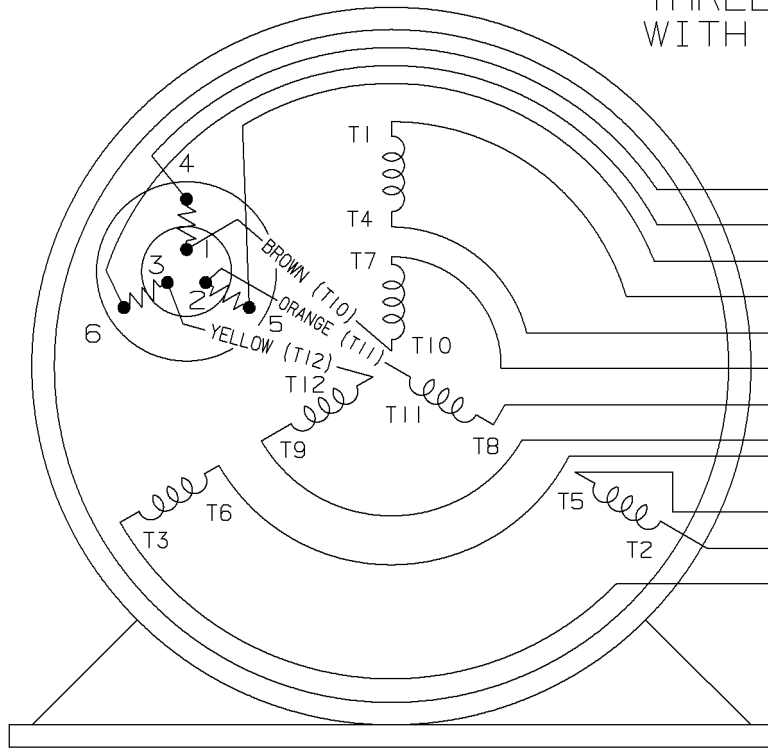
Electrical Type	Squirrel Cage Induction Run	Starting Method	Across The Line
Poles	6	Rotation	Reversible
Resistance Main	3.2 Ohms	Mounting	Round Belly Band
Motor Orientation	Horizontal	Drive End Bearing	Ball
Opp Drive End Bearing	Ball	Frame Material	Rolled Steel
Shaft Type	Single Special Extension	Overall Length	16.01 in
Frame Length	8.66 in	Shaft Diameter	0.625 in
Shaft Extension	5.06 in	Assembly/Box Mounting	F1 ONLY
Connection Drawing	A-102007-1	Outline Drawing	607-0314-001



DASH	FRAME	C
001	856 56-85	15.98
002	956 56-95	16.98
003	706 56-70	14.48
004	656 56-65	13.98
005	756 56-75	14.98

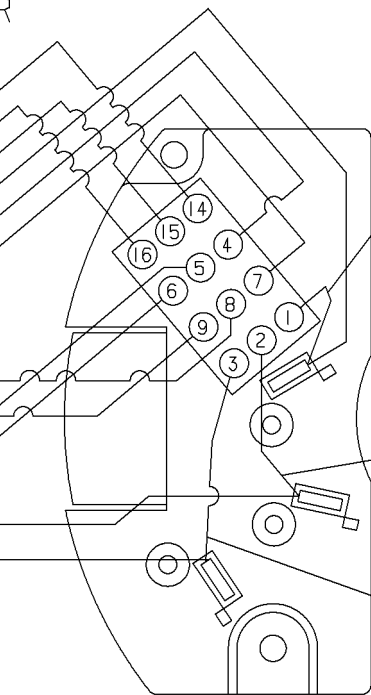
			TOLERANCES UNLESS SPECIFIED		REGAL™ Regal Beloit America, Inc.	DRAWN	EL 8/21/2017					
			DEC.	INCHES		CHK						
			.X	±.1		APPD						
H	SGR RING REPLACED WITH HELWIG BRUSH PER ECR-0224554	RAJ 3/27/2023	SAT	.XX ±.03	TITLE	OUTLINE	SCALE	3=8				
G	JUGGERNAUT DECAL WAS REMOVED	AA 11/07/22		.XXX ±.005			REF					
F	ADDED DECAL JUGGERNAUT	LST 10/25/2018		.XXXX ±.0005	MAT'L.		FMF					
NO.	REVISION	BY & DATE	CHK	ANG ±'30"	FINISH		PREV					
THIS DRAWING IN DESIGN AND DETAIL IS OUR PROPERTY AND MUST NOT BE USED EXCEPT IN CONNECTION WITH OUR WORK ALL RIGHTS OF DESIGN AND INVENTION ARE RESERVED THIS IS AN ELECTRONICALLY GENERATED DOCUMENT - DO NOT SCALE THIS PRINT			RFP		CAD FILE	607-0314		SIZE	DRAWING NO.	PAGE	OF	REV.
			DIST	WP			A	607-0314				H

THREE PHASE-DUAL VOLTAGE WITH THERMAL PROTECTOR



VIEW OF TERMINAL END

- (T14) BROWN
- (T16) YELLOW
- (T15) ORANGE
- (T1) RED
- T4
- T7
- T8
- T9
- T6
- T5
- (T2) BLUE
- (T3) BLACK

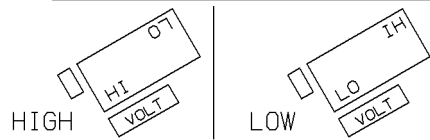


VIEWING BOTTOM OF TERMINAL BOARD

RED
 NUMBERS SHOWN ON TERM BOARD ARE FOR REF. ONLY.
 (NUMBERS DO NOT APPEAR ON PARTS.)

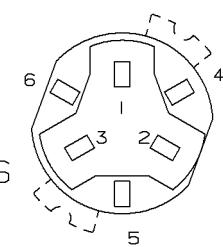
BLUE
 BLACK

TO CHANGE VOLTAGE, PULL PLUG, ROTATE 180° AND REINSERT



CONNECT LINES TO L1, L2 & L3

NOTE:
 ACTUAL PROTECTORS TERMINAL LOCATIONS FOR LEAD CONNECTIONS



4	06-26-1995	1,2,3 WERE SWITCHED WITH 4,5,6 ON THE TERMINAL CN 20644	BR	✓ MAX. SURFACE ROUGHNESS UNLESS NOTED OTHERWISE	UNLESS OTHERWISE SPECIFIED DIMENSIONS ARE IN INCHES TOL. ON XX±.02 XXX±.005 XXXX±.0005 ANGLES± 7°30"			
3	05-18-1994	ADDED ACTUAL PROTECTOR VIEW CN 17481	KL	MATL SPEC	Regal Beloit America, Inc.			DRAWN BY RM 07-20-1993
2	07-20-1993	REDRAWN ON CADD, ORIGINAL LOST. REV. VCD TO COLORED LEADS CNI3741	RM	FINISH				CHKD BY ET 07-20-1993
REV	DATE	CHANGE	NAME	REFERENCE DRW.				APPD BY ET 07-20-1993
				PART NAME CONNECTION DIAGRAM 3Ø - DUAL VOLTAGE MOTOR	DRWG NO A- 102007-1			

SHOP BOOK

PURCHASED

DISTRIBUTION - WA - LB - WP - LM - BR

CADD FILE NO.

102007-1



CERTIFICATION DATA SHEET

CUSTOMER:

ORDER #:

CONN. DIAGRAM: A-102007-1

OUTLINE: 607-0314-001

WINDING #: ZT608 R1 3

CUSTOMER

PO#:

MODEL #: 56T11015570 A

CUSTOMER PART

#:

MOUNTING: F1 ONLY

TYPICAL MOTOR PERFORMANCE DATA

HP	kW	SYNC. RPM	F.L. RPM	FRAME	ENCLOSURE	KVA CODE	DESIGN
1 1/2&1	1.12&0.75	1200	1140&950	56Z	OPAO	J	NO DESIGN CODE

PH	Hz	VOLTS	AMPS	START TYPE	DUTY	INSL	S.F.	AMB°C
3	60/50	200-230/460&190/380	5.5-5.4/2.7&4.8/2.4	ACROSS THE LINE	CONTINUOUS	H1	1.0/1.0	70

FULL LOAD EFF:	78.5&78.5	3/4 LOAD EFF:	78.5	1/2 LOAD EFF:	78	GTD. EFF	75.5	ELEC. TYPE	SQ CAGE IND RUN
FULL LOAD PF:	68&60	3/4 LOAD PF:	55	1/2 LOAD PF:	42.5				

F.L. TORQUE	LOCKED ROTOR AMPS	L.R. TORQUE	B.D. TORQUE	F.L. RISE°C
6.8 LB-FT	28.6 / 14.3	17.7 LB-FT 260 %	22.5 LB-FT 331 %	999

SOUND PRESSURE @ 3 FT.	SOUND POWER	ROTOR WK^2	MAX. WK^2	SAFE STALL TIME	STARTS / HOUR	APPROX. MOTOR WGT
0 dBA	10 dBA	0.11 LB-FT^2	25 LB-FT^2	15 SEC.	2	40 LBS.

***** SUPPLEMENTAL INFORMATION *****

DE BRACKET TYPE	ODE BRACKET TYPE	MOUNT TYPE	ORIENTATION	SEVERE DUTY	HAZARDOUS LOCATION	DRIP COVER	SCREENS	PAINT
STANDARD HUBLESS	STANDARD	ROUND BELLY BAND	HORIZONTAL	FALSE	NONE	FALSE	NONE	GRAY (POWDER)

BEARINGS		GREASE	SHAFT TYPE	SPECIAL DE	SPECIAL ODE	SHAFT MATERIAL	FRAME MATERIAL
DE	ODE						
BALL 6203	BALL 6203	DC 44M	SGL SPL EXT	0.625 x 5.00 IN SEKF WITH 4.00 IN FULL FLAT	NONE	1144 STRESSPROOF (C-223)	ROLLED STEEL

THERMO-PROTECTORS				THERMISTORS	CONTROL	SPACE HEATERS
THERMOSTATS	PROTECTORS	WDG RTDs	BRG RTDs			
NONE	AUT LCK RTR ONLY	NONE	NONE	NONE	FALSE	NONE VOLTS

*
N
O
T
E
S

INVERTER TORQUE: NONE
INV. HP SPEED RANGE: NONE
ENCODER: NONE
NONE NONE
NONE NONE PPR
BRAKE: NONE NONE
NONE P/N NONE
NONE NONE
NONE FT-LB NONE V NONE Hz

PREPARED BY: Sumanth Raja Ghanta

DATE: 10/09/2018 07:41:16 AM

FORM 3531 REV.3 02/07/99

** Subject to change without notice.

REV 1 - CHANGED LOGO FROM MARATHON TO LEESON - 3/25/2025



REGAL REXNORD CORPORATION
TYPICAL PERFORMANCE CURVE for AC MOTOR

Customer

Curve at

460

Volts

HP 1.5&1

PHASE 3

Model No 56T11015570

60

HZ

VOLTS 200-230/460&190/380

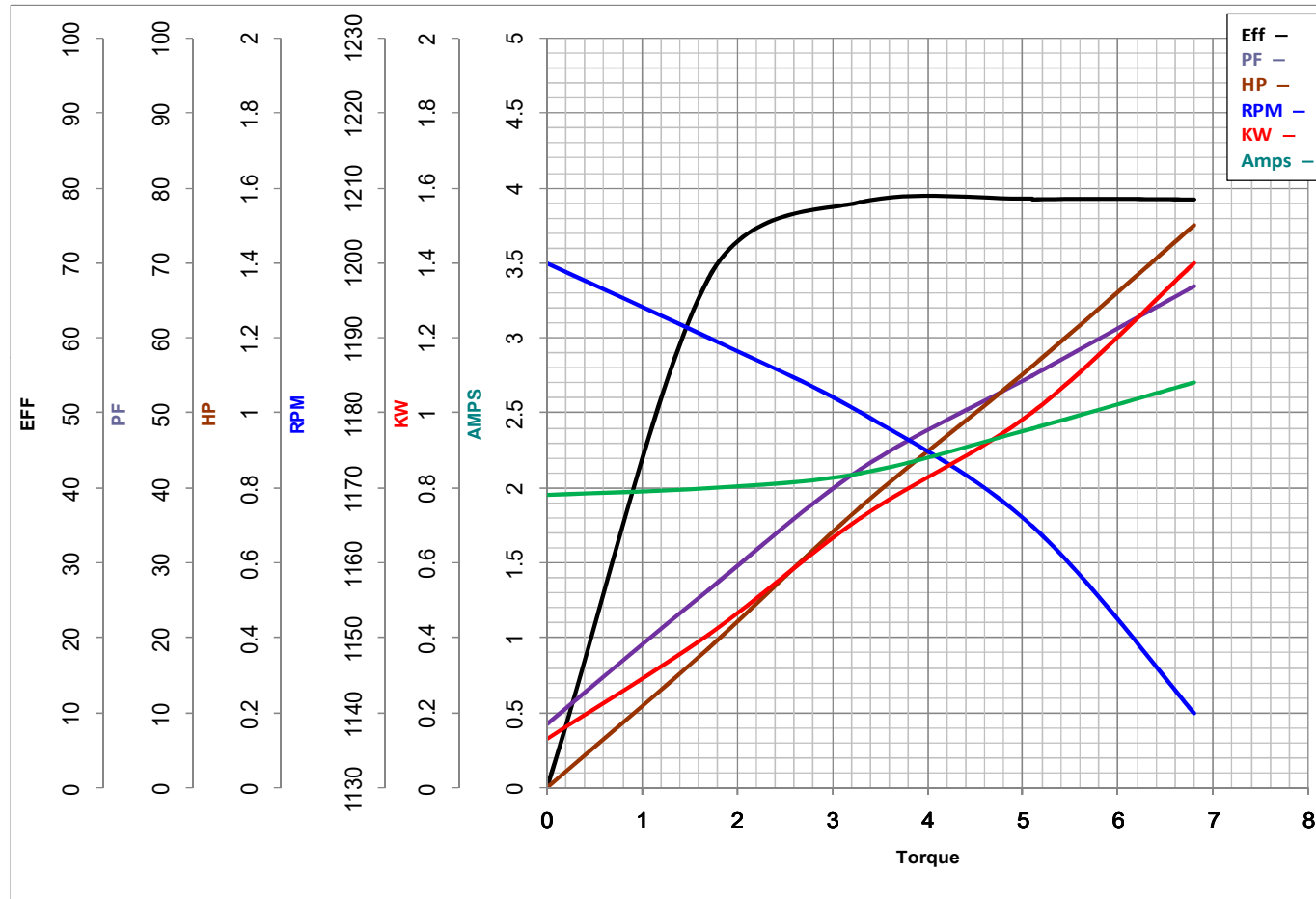
1.5

HP

Catalog No X503-P

HZ 60&50

RPM 1140&950



Torque in Lb.Ft

FL TORQUE 6.8 Lb.Ft
BD TORQUE 22.5 Lb.Ft
LR TORQUE 17.7 Lb.Ft

FL AMPS 5.5-5.4/2.7
PU TORQUE 19.0 Lb.Ft
LR AMPS 14.3

WINDING ZT608-3

Date 11/1/2018