

PRODUCT INFORMATION PACKET



Model No: 056T17G5321

Catalog No: G666

Explosion Proof Motor, 0.50 HP, 3 Ph, 60 Hz, 575 V, 1800 RPM, 56 Frame, EPFC



Regal and LEESON are trademarks of Regal Rexnord Corporation or one of its affiliated companies.
©2025 Regal Rexnord Corporation, All Rights Reserved. MC017097E



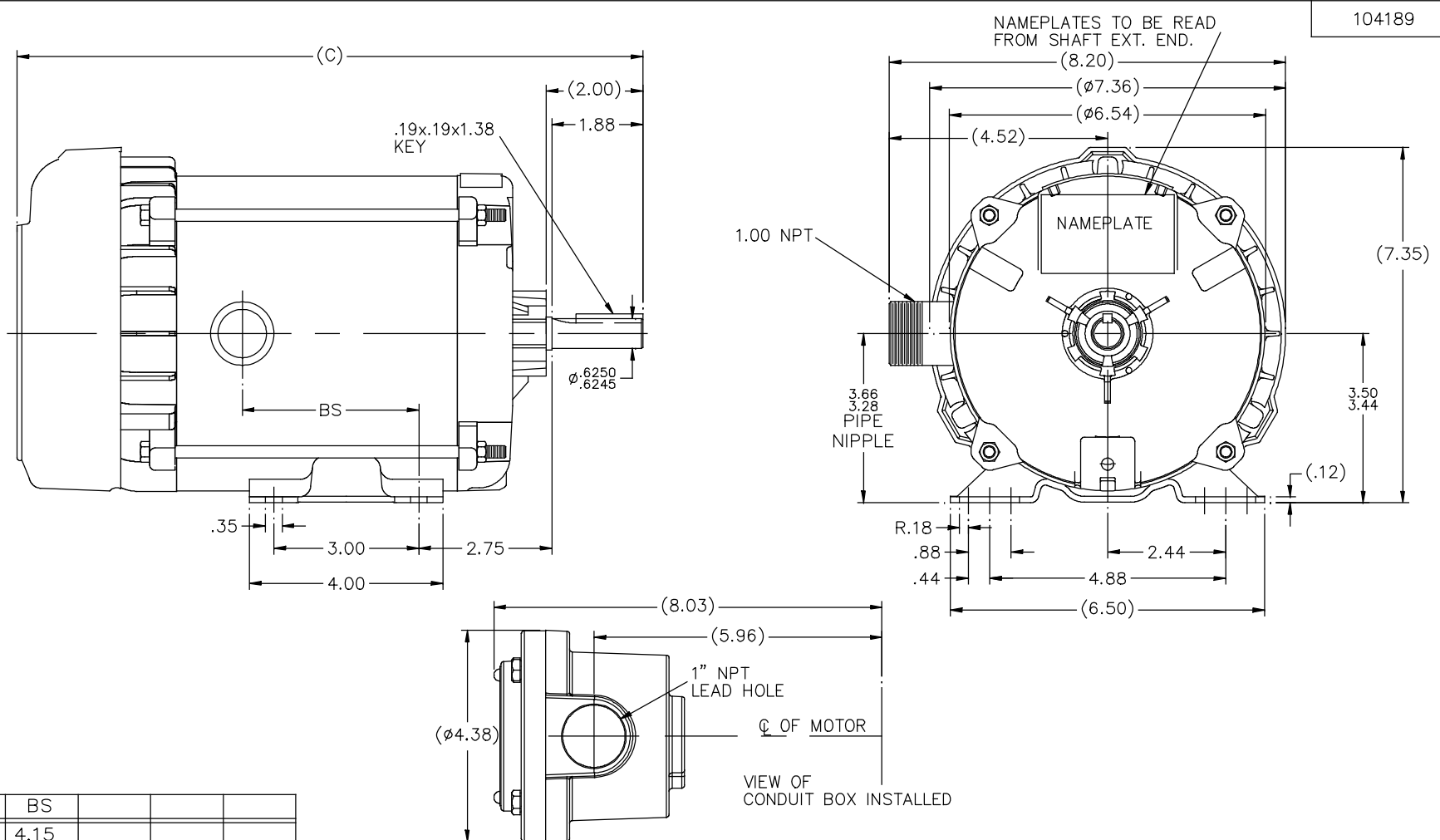


Nameplate Specifications

Phase	3	Output HP	0.50 Hp
Output KW	0.37 kW	Voltage	575 V
Speed	1725 rpm	Service Factor	1.0
Frame	56	Enclosure	Explosion Proof Fan cooled
Thermal Protection	Automatic	Efficiency	68 %
Ambient Temperature	40 °C	Frequency	60 Hz
Current	0.95 A	Power Factor	61.1
Duty	Continuous	Insulation Class	B
Design Code	NO DESIGN CODE	KVA Code	M
Drive End Bearing Size	6203	Opp Drive End Bearing Size	6203
UL	UL Listed And CSA Certified	CSA	Y
CE	N	IP Code	54
Number of Speeds	1	Hazardous Location	DIV 1 EXP PROOF CL I GR CD CL II GR FG T3B

Technical Specifications

Electrical Type	Squirrel Cage Induction Run	Starting Method	Across The Line
Poles	4	Rotation	Reversible
Resistance Main	40 Ohms	Mounting	Rigid Base
Motor Orientation	Horizontal	Drive End Bearing	Ball
Opp Drive End Bearing	Ball	Frame Material	Rolled Steel
Shaft Type	NEMA 56	Overall Length	13.94 in
Frame Length	6.81 in	Shaft Diameter	0.625 in
Shaft Extension	2 in	Assembly/Box Mounting	F1 ONLY
Outline Drawing	B-104189-681	Connection Drawing	A-EE7335B

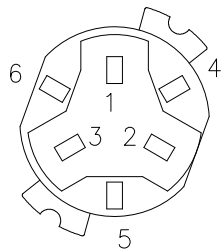


104189

DASH	(C)	BS			
631	13.44	4.15			
681	13.94	4.65			
731	14.44	5.15			
781	14.94	5.65			
831	15.44	6.15			
881	15.94	6.65			
931	16.44	7.15			
981	16.94	7.65			

			TOLERANCES UNLESS SPECIFIED		REGAL™ Regal Beloit America, Inc.		DRAWN MH 11-20-1996		
			DEC.	INCHES			CHK	ML 12-02-1996	
4	COND. BOX INSTALLED VIEW UPDATED PER ECR-0044571	UD 10/15/13	ST	.X	±.1		APPD	GK 12-02-1996	
3	REVISED C'BOX PER CN40784A	JJB 02/23/2007	ML	.XX	±.03	TITLE OUTLINE		SCALE 1=2	
2	ADDED CONDUIT BOX VIEW CN 26686	MRB 03-22-1998		.XXX	±.005	56 FR. - EXP. PR. - TEFC - 1 ϕ & 3 ϕ		REF	
1	NEW DRAWING CN 23099	MH 12-02-1996		.XXXX	±.0005	MAT'L		FMF	
NO.	REVISION	BY & DATE	CHK	ANG	±7'30"	FINISH		PREV	
THIS DRAWING IN DESIGN AND DETAIL IS OUR PROPERTY AND MUST NOT BE USED EXCEPT IN CONNECTION WITH OUR WORK. ALL RIGHTS OF DESIGN AND INVENTION ARE RESERVED. THIS IS AN ELECTRONICALLY GENERATED DOCUMENT - DO NOT SCALE THIS PRINT			RFP			CAD FILE 104189	SIZE B	DRAWING NO. 104189	PAGE OF 4
			DIST	WP				REV. 4	

SINGLE VOLTAGE – THREE PHASE WITH OVERLOAD PROTECTOR

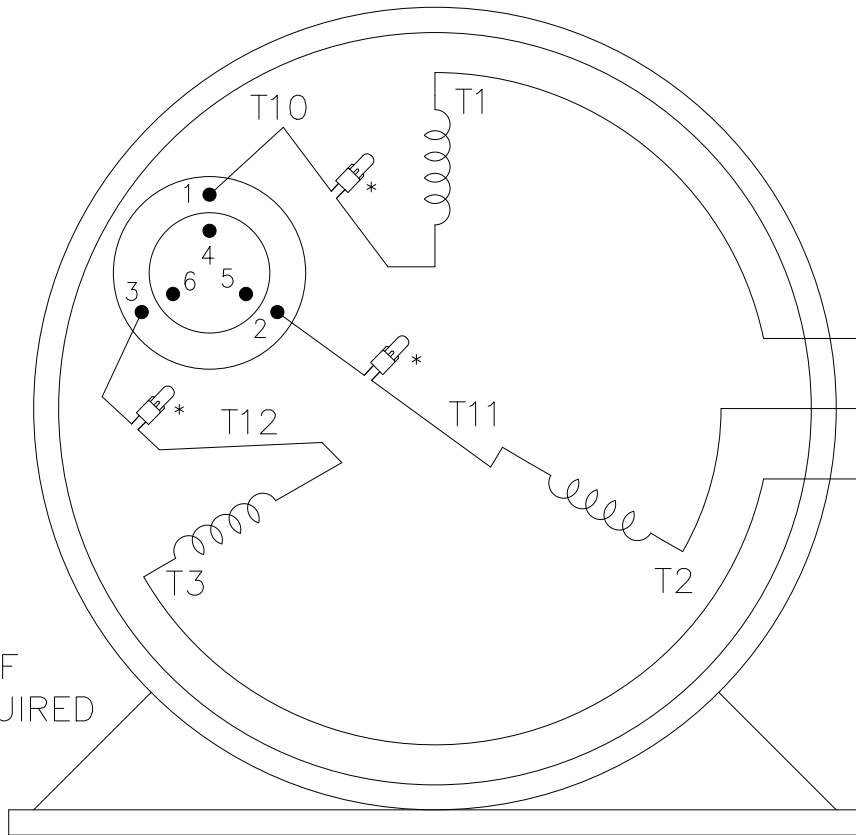


NOTE:
ACTUAL PROTECTORS
TERMINAL LOCATIONS
FOR LEAD CONNECTIONS

NOTE: TERMINAL BOARD
CONNECTIONS

LEADS WITH TERMINALS
SHOULD BE CONNECTED
TO INBOARD SIDE OF
TERMINAL BOARD.

T1 ---	L1 —	4A	} IF REQUIRED
T2 ---	L2 —	5A	
T3 ---	L3 —	6A	



T1	—	4A	} IF REQUIRED
T2	—	5A	
T3	—	6A	

IF
REQUIRED

—TO REVERSE ROTATION—
INTERCHANGE ANY TWO
LINE LEAD CONNECTIONS

VIEW OF TERMINAL END

OPTIONAL CORD
CONNECTION

L1	—	WHITE
L2	—	RED
L3	—	BLACK

		T6CK
T6CA		T6BM
T4CC		T4AY
T4C		T2DL
T6D		T2H

* USE PRESSURE CONNECTORS FOR MT2 PLANT ONLY

NO.	REVISION	BY & DATE	CHK	TOLERANCES UNLESS SPECIFIED		FINISH	DRAWN KL 08-25-1993			
				DEC.	INCHES					
12	UPDATED PER ECR-0211312	SG 07/27/2021	BD	.X	± -		CHK RD 11-12-2014			
11	ADDED THE OPTIONAL CORD CONNECTION	JAH 11-12-2014	RD	.XX	± -	TITLE CONNECTION DIAGRAM	APPD RD 11-12-2014			
10	PRESSURE CONNECTORS ADDED (QTY 3)	PVR 07-09-2014	GR	.XXX	± -	SINGLE VOLT – 3Ø WITH OVERLOAD PROT.	SCALE 1=1			
9	ADDED 4A, 5A, & 6A "IF REQUIRED" MU44987	MSG 01-07-2002	SAS	.XXXX	± -	MAT'L.	REF			
			ANG	± -			FMF			
							PREV			
THIS DRAWING IN DESIGN AND DETAIL IS OUR PROPERTY AND MUST NOT BE USED EXCEPT IN CONNECTION WITH OUR WORK ALL RIGHTS OF DESIGN AND INVENTION ARE RESERVED THIS IS AN ELECTRONICALLY GENERATED DOCUMENT – DO NOT SCALE THIS PRINT				RFP	CAD FILE EE7335B		SIZE A	DRAWING NO. EE7335B	PAGE OF	REV. 12
				DIST LB-WP					4 of 7	



Data Sheet

Date: 1/2/2019
 Customer: _____
 Attention: _____
 Submitted by: FAREEDA DUDEKULA



56T17G5321

Submittal

Data @ 575 V

Motor Load Data

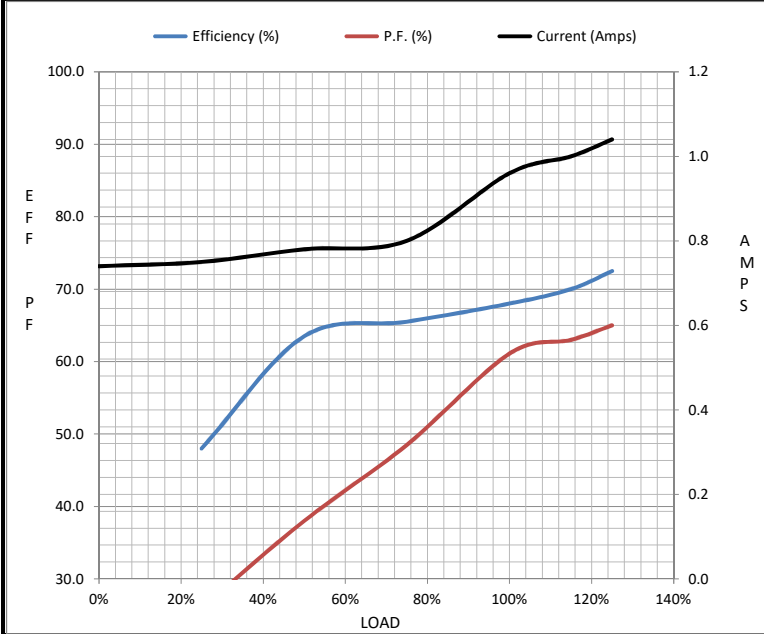
Load	0%	25%	50%	75%	100%	115%	125%	LR
Current (Amps)	0.74	0.75	0.78	0.80	0.96	1.00	1.04	5.6
Torque (ft-lb)	0.00	0.37	0.74	1.10	1.50	1.80	2.00	6.2
RPM	1800	1785	1775	1750	1725	1,722	1720	0
Efficiency (%)		48.0	63.5	65.5	68.0	70.0	72.5	
P.F. (%)	14.0	26.0	38.0	48.5	61.1	63.0	65.0	82.0

Motor Speed Data

	LR	Pull-Up	BD	Rated	Idle
Speed (RPM)	0	500	1150	1725	1800
Current (Amps)	5.6	5.2	3.8	0.96	0.74
Torque (ft-lb)	6.2	6.2	7.2	1.50	0.00

Information Block

HP	0.5			
Sync. RPM	1800			
Frame	56			
Enclosure	EPFC			
Construction	TSE			
Voltage	575 V			
Frequency	60 Hz			
Design	NONE			
LR Code letter	M			
Service Factor	1			
Temp Rise @ FL	45 °C			
Duty	CONT			
Ambient	40 °C			
Elevation	3300 feet			
Rotor/Shaft wk ²	0.05 Lb-Ft ²			
Ref Wdg	ZT408 R8			
Sound Pressure @ 1M	62 dBA			
VFD Rating	NONE			
Outline Dwg	B-104189-681			
Conn. Diag	A-EE7335B			
Additional Specifications:				
0				
0				
EQUIV CKT (OHMS / PHASE)				
R1	R2	X1	X2	Xm
0.0000	0.0000	0.0000	0.0000	0.0000



Speed - Torque Curve

