

PRODUCT INFORMATION PACKET



Model No: 114627.00

Catalog No: 114627.00

Explosion Proof Motor, 0.50 & 0.33 HP, 3 Ph, 60 & 50 Hz, 208-230/460 & 190/380 V, 3600 & 3000 RPM,
56C Frame, EPNV



Regal and Leeson are trademarks of Regal Rexnord Corporation or one of its affiliated companies.

©2023 Regal Rexnord Corporation, All Rights Reserved. MC017097E



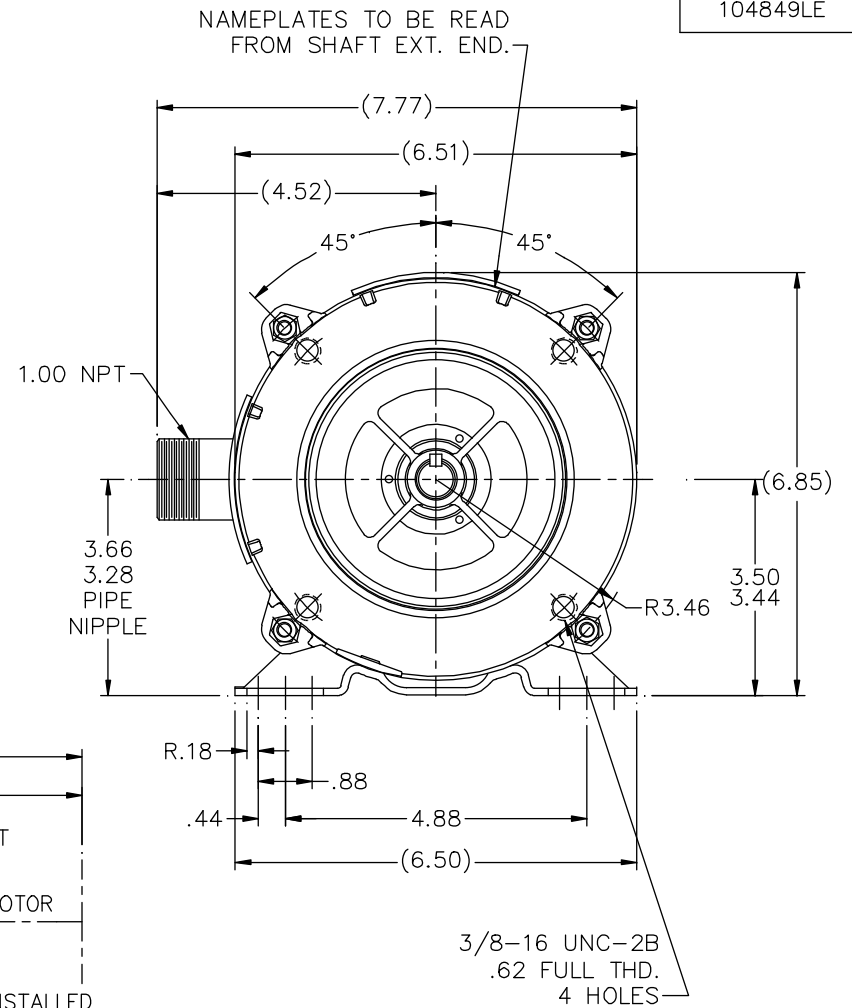
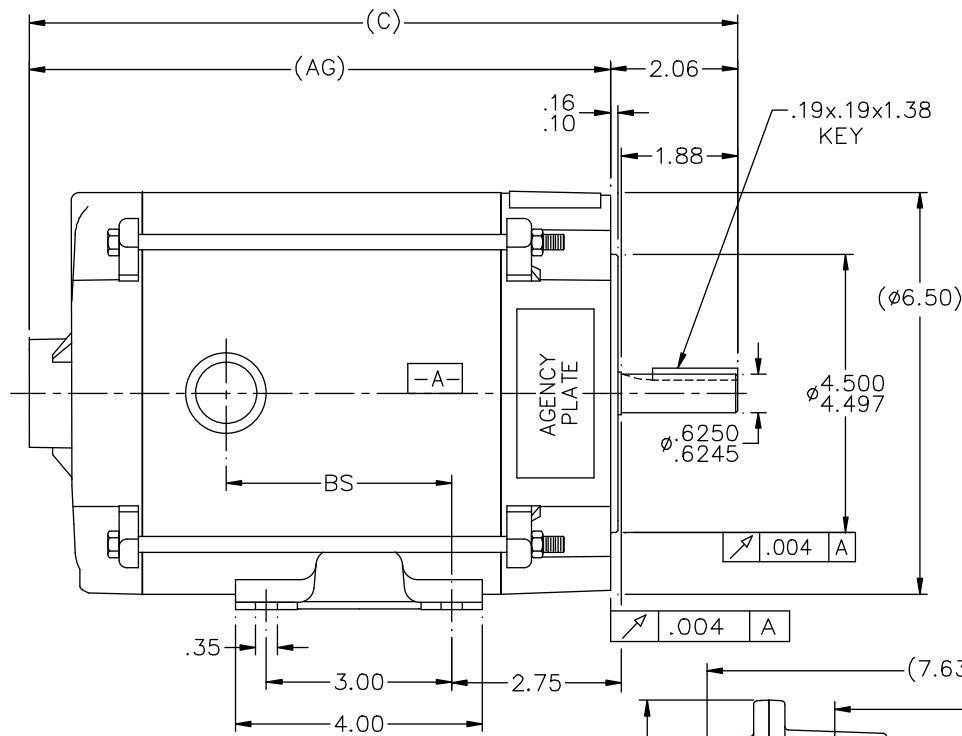


Nameplate Specifications

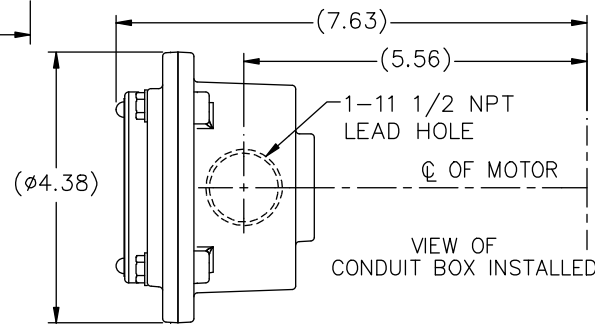
Phase	3	Output HP	0.50 & 0.33 Hp
Output KW	0.37 & 0.25 kW	Voltage	208-230/460 & 190/380 V
Speed	3450 & 2850 rpm	Service Factor	1.0 & 1.0
Frame	56C	Enclosure	Explosion Proof Non Ventilated
Thermal Protection	Automatic	Efficiency	80 & 75.5 %
Ambient Temperature	40 °C	Frequency	60 & 50 Hz
Current	1.6-1.6/.8 & 1.4/.7 A	Power Factor	78
Duty	Continuous	Insulation Class	B
Design Code	B	KVA Code	M
Drive End Bearing Size	6203	Opp Drive End Bearing Size	6203
UL	UL Listed And CSA Certified	CSA	Y
CE	N	IP Code	54
Number of Speeds	1	Hazardous Location	DIV 1 EXP PROOF CL I GR CD CL II GR FG T3C

Technical Specifications

Electrical Type	Squirrel Cage Induction Run	Starting Method	Across The Line
Poles	2	Rotation	Reversible
Resistance Main	0 Ohms	Mounting	Rigid Base
Motor Orientation	Horizontal	Drive End Bearing	Ball
Opp Drive End Bearing	Ball	Frame Material	Rolled Steel
Shaft Type	NEMA 56	Overall Length	12.47 in
Frame Length	6.81 in	Shaft Diameter	0.625 in
Shaft Extension	1.88 in	Assembly/Box Mounting	F1 ONLY
Connection Drawing	EE7335-LE	Outline Drawing	104849LE-681



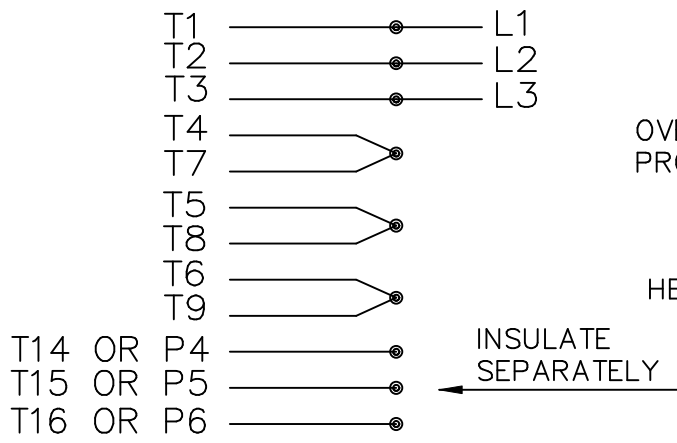
NAMEPLATES TO BE READ FROM SHAFT EXT. END.



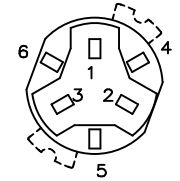
DASH	(C)	(AG)	BS
631	11.97	9.91	4.15
681	12.47	10.41	4.65
731	12.97	10.91	5.15
781	13.47	11.41	5.65
831	13.97	11.91	6.15
881	14.47	12.41	6.65
931	14.97	12.91	7.15
981	15.47	13.41	7.65

				TOLERANCES UNLESS SPECIFIED		LEESON	ELECTRIC MOTORS GEARMOTORS AND DRIVES	DRAWN RJW 06-25-2007				
				DEC.	INCHES			CHK	ML	06-25-2007		
				.X	±.1	TITLE OUTLINE - 'C' FACE 56 FR. - EXP. PR.		APPD	GK	06-25-2007		
				.XX	±.03			SCALE	1=2			
				.XXX	±.005			REF				
1	COND. BOX INSTALLED VIEW UPDATED PER ECR-0044571	UD	10/16/13	ST	.XXXX	±.0005	MAT'L.	FMF				
NO.	REVISION	BY & DATE	CHK	ANG	±1/2'	FINISH	PREV					
THIS DRAWING IN DESIGN AND DETAIL IS OUR PROPERTY AND MUST NOT BE USED EXCEPT IN CONNECTION WITH OUR WORK ALL RIGHTS OF DESIGN AND INVENTION ARE RESERVED THIS IS AN ELECTRONICALLY GENERATED DOCUMENT - DO NOT SCALE THIS PRINT				RFP	06-25-2007	CAD FILE	104849LE	SIZE	DRAWING NO.	PAGE	OF	REV.
				DIST	WP			B	104849LE	1	1	

HIGH VOLTAGE CONNECTIONS

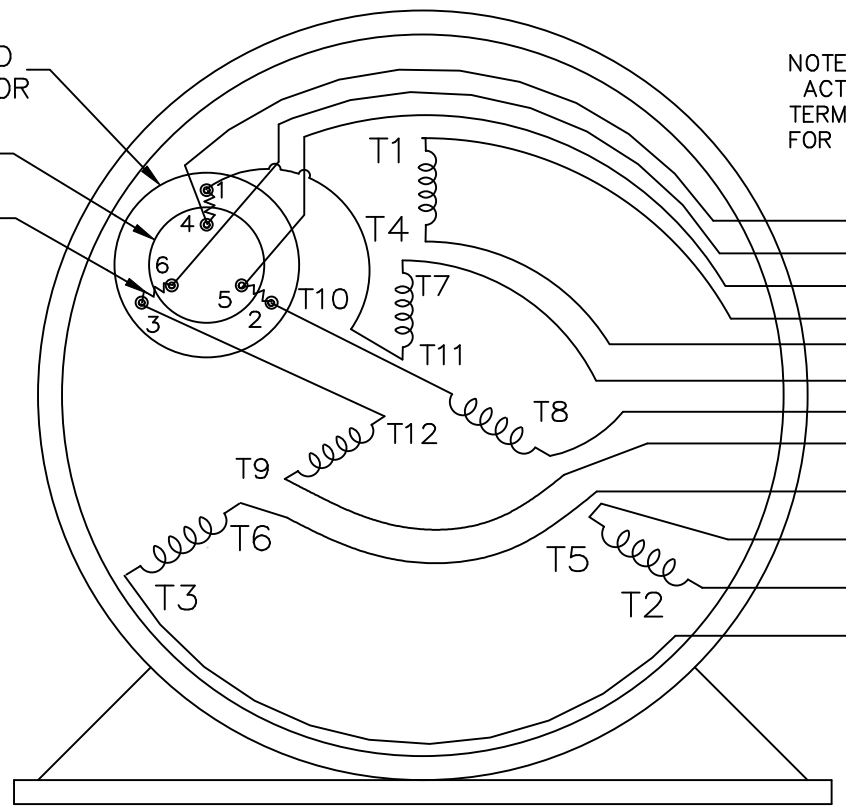


THREE PHASE - DUAL VOLTAGE MOTOR WITH OVERLOAD PROTECTOR



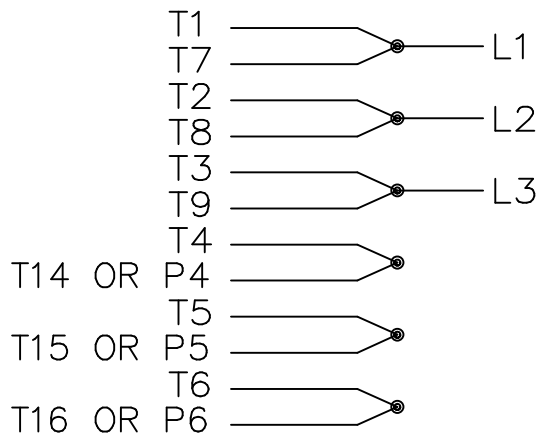
NOTE:
ACTUAL PROTECTORS
TERMINAL LOCATIONS
FOR LEAD CONNECTIONS

OVERLOAD PROTECTOR
DISC
HEATER



T14 OR P4
T16 OR P6
T15 OR P5

LOW VOLTAGE CONNECTIONS



VIEW OF TERMINAL END

T2K
T4D
T6AN

				TOLERANCES UNLESS SPECIFIED		ELECTRIC MOTORS GEARMOTORS AND DRIVES	DRAWN NJS 04-20-2005			
				DEC.	INCHES		CHK ML 04-20-2005			
				.X	± -		APPD MJS 04-20-2005			
				.XX	± -		SCALE			
				.XXX	± -		REF			
				.XXXX	± -	MAT'L.				
NO.	REVISION	BY & DATE	CHK	ANG	± -	FINISH	PREV			
THIS DRAWING IN DESIGN AND DETAIL IS OUR PROPERTY AND MUST NOT BE USED EXCEPT IN CONNECTION WITH OUR WORK ALL RIGHTS OF DESIGN AND INVENTION ARE RESERVED THIS IS AN ELECTRONICALLY GENERATED DOCUMENT - DO NOT SCALE THIS PRINT				RFP	04-20-2005	CAD FILE EE7335_LE	SIZE A	DRAWING NO. EE7335-LE	PAGE OF	REV.
				DIST	WP					



P.O. BOX 8003
 WAUSAU, WI 54401-8003
 PH. 715-675-3311

DATA VOLTS: 460

CERTIFICATION DATA SHEET

CONN. DIAGRAM: A-EE7335-LE
 OUTLINE: B-104849LE-681
 WINDING: ZT2159

CAT #: 114627.00

NONE 3

TYPICAL MOTOR PERFORMANCE DATA

HP	KW	SYNC RPM	FL RPM	FRAME	ENCLOSURE	TYPE	KVA CODE	DESIGN
0.5	0.37	3600	3510	56C	EPNV	TTR	M	B

PH	HZ	VOLTS	AMPS	START TYPE	DUTY	INSL	S.F.	AMB	ELEV.
3	60/50	208-230/460#190/380	1.6-1.6/.8&1.4/.7	ACROSS THE LINE	CONT	B	1.15	40	3300

F.L. EFF	80.0	3/4 LD EFF	75.3	1/2 LD EFF	68.0	GTD EFF	ELECT. TYPE
F.L. PF	78.0	3/4 LD PF	71.9	1/2 LD PF	62.0	77.0	SQ CAGE IND RUN

F.L. TORQUE	LR AMPS @ 460 V	L.R. TORQUE	B.D. TORQUE	F.L. RISE (°C)
192 LB-FT	6.4	646 LB-FT 336%	874 LB-FT 455%	34

PRESSURE @ 3	POWER	ROTOR WK ²	MAX. LOAD WK ²	SAFE STALL TIME	STARTS/HOUR	MOTOR WGT
999 dBA	1008 dBA	0.03 LB-FT ²	0 LB-FT ²	20 SEC.	0	28 LB.

*** SUPPLEMENTAL INFORMATION ***

DE BRACKET TYPE	ODE BRACKET TYPE	MOUNT TYPE	MOTOR ORIENTATION	SEVERE DUTY	HAZARDOUS LOCATION	DRIP COVER	SCREENS	PAINT
C-FACE	STANDARD	RIGID	HORIZONTAL	NO	DF CL I GR C&D CL II GF	NO	NONE	JE - LEESON (ENAM)

BEARINGS		GREASE	SHAFT TYPE	SPECIAL DE	SPECIAL ODE	SHAFT MATERIAL	FRAME MATERIAL
DE	ODE	POLYREX EM	STANDARD 56	NONE	NONE	1144 STRESSPROOF (C-223)	ROLLED STEEL
BALL	BALL						
6203	6203						

THERMOSTATS	PROTECTORS	WDG RTD's	BRG RTD's	THERMISTORS	CONTROL	SPACE HEATERS
NONE	AUTOMATIC	NONE	NONE	NONE	FALSE	NA

R1 (ohms/ph)	R2 (ohms/ph)	X1 (ohms/ph)	X2 (ohms/ph)	Xm (ohms/ph)	VIBRATION (in/sec)	FLOAT
0	0	0	0	0	0.150	ODE

* N O T E S *	INVERTER TORQUE: NONE INV. HP SPEED RANGE: NONE					
	ENCODER: NONE NONE NONE					
	NONE PPR					
	BRAKE: NONE NONE					
	FT-LB: NA VOLTAGE: NONE					

DATE: 1/17/2018

UL: Y-(LEESON UL REC)

Data Sheet

Date: 1/17/2018

114627.00



Data @ 460 V

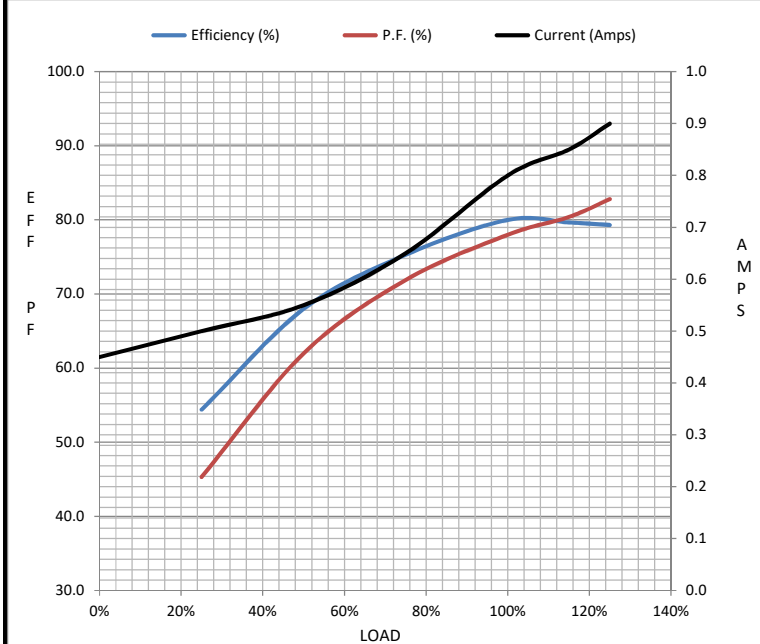
Motor Load Data

Load	0%	25%	50%	75%	100%	115%	125%	LR
Current (Amps)	0.45	0.50	0.55	0.65	0.80	0.85	0.90	6.4
Torque (ft-lb)	0.00	47.6	95.3	144	192	3,486	242	646
RPM	3600	3572	3553	3533	3510	3,501	3488	0
Efficiency (%)		54.4	68.0	75.3	80.0	79.7	79.3	
P.F. (%)	29.5	45.3	62.0	71.9	78.0	80.4	82.8	63.0

Motor Speed Data

	LR	Pull-Up	BD	Rated	Idle
Speed (RPM)	0	170	2655	3510	3600
Current (Amps)	6.4	6.4	4.1	0.80	0.45
Torque (ft-lb)	646	601	874	192	0.00

Information Block				
HP	0.5			
Sync. RPM	3600			
Frame	56			
Enclosure	EPNV			
Construction	TTR			
Voltage	208-230/460#190/380 V			
Frequency	60 Hz			
Design	B			
LR Code letter	M			
Service Factor	1.15			
Temp Rise @ FL	34 °C			
Duty	CONT			
Ambient	40 °C			
Elevation	1,000 feet			
Rotor/Shaft wk ²	0.03 Lb-Ft ²			
Ref Wdg	ZT2159 NONE			
Sound Pressure @ 1M	999 dBA			
VFD Rating	NONE			
Outline Dwg	B-104849LE-681			
Conn. Diag	A-EE7335-LE			
Additional Specifications:				
0				
0				
EQUIV CKT (OHMS / PHASE)				
R1	R2	X1	X2	Xm
0.0000	0.0000	0.0000	0.0000	0.0000



Speed - Torque Curve

