

PRODUCT INFORMATION PACKET



Model No: 121274.00

Catalog No: 121274.00

Special Voltage Motor, 1.50 HP, 3 Ph, 50 Hz, 220/380 V, 3000 RPM, 143TC Frame, TEFC



Regal and LEESON are trademarks of Regal Rexnord Corporation or one of its affiliated companies.

©2025 Regal Rexnord Corporation, All Rights Reserved. MC017097E



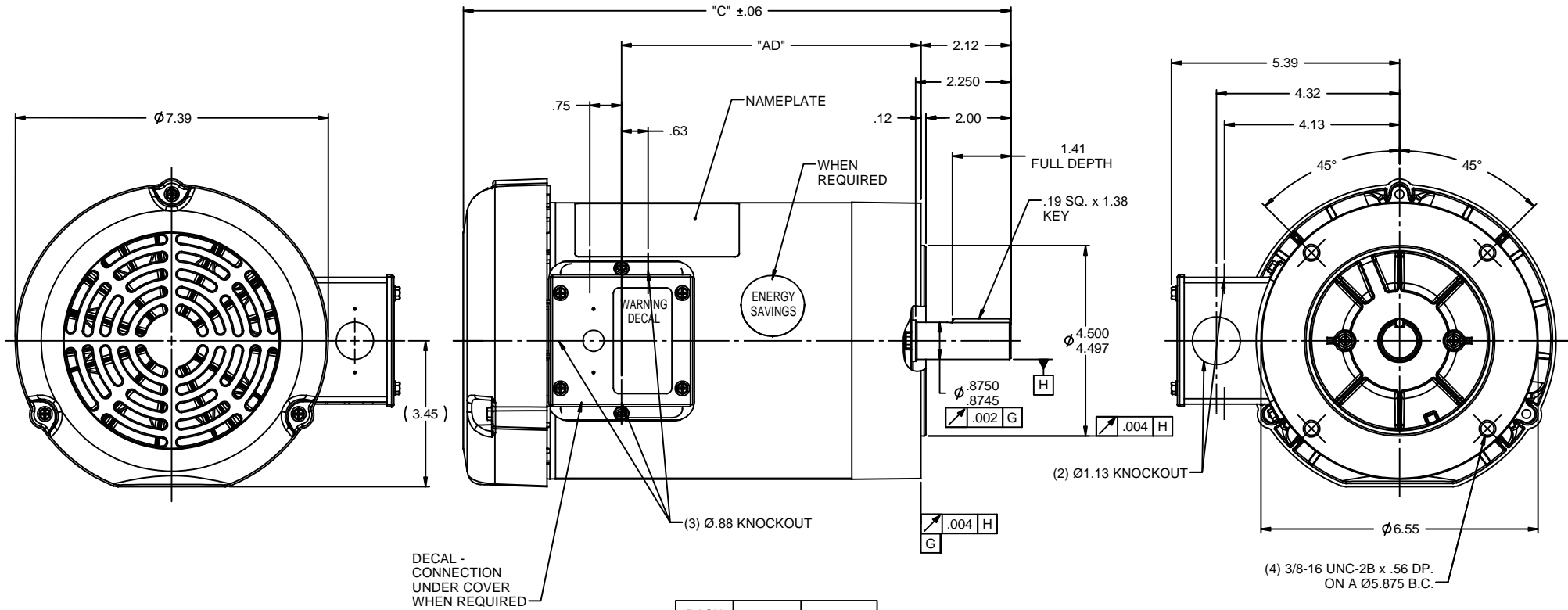


Nameplate Specifications

Phase	3	Output HP	1.50 Hp
Output KW	1.1 kW	Voltage	220/380 V
Speed	2850 rpm	Service Factor	1.15
Frame	143TC	Enclosure	Totally Enclosed Fan Cooled
Thermal Protection	No Protection	Efficiency	80 %
Ambient Temperature	40 °C	Frequency	50 Hz
Current	5.0/2.9/2.5 A	Power Factor	79
Duty	Continuous	Insulation Class	B
Design Code	NO DESIGN CODE	KVA Code	L
Drive End Bearing Size	6205	Opp Drive End Bearing Size	6203
UL	Recognized	CSA	Y
CE	Y	IP Code	54
Number of Speeds	1		

Technical Specifications

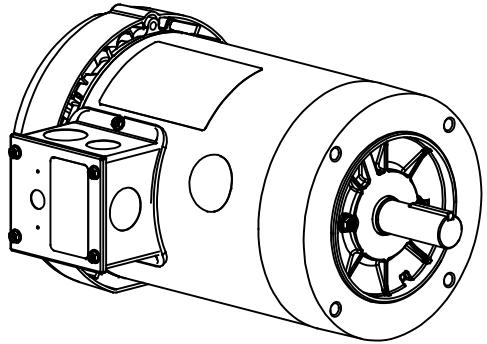
Electrical Type	Squirrel Cage Induction Run	Starting Method	Across The Line
Poles	2	Rotation	Reversible
Resistance Main	11.8 Ohms	Mounting	Round
Motor Orientation	Horizontal	Drive End Bearing	Ball
Opp Drive End Bearing	Ball	Frame Material	Rolled Steel
Shaft Type	T	Overall Length	11.92 in
Frame Length	6.00 in	Shaft Diameter	0.875 in
Shaft Extension	2.25 in	Assembly/Box Mounting	F1 ONLY
Connection Drawing	005381.01	Outline Drawing	028777-600



DECAL - CONNECTION UNDER COVER WHEN REQUIRED

DASH NO.	"C"	"AD"
550	11.42	5.56
600	11.92	6.06
650	12.42	6.56
675	12.67	6.81
700	12.92	7.06
750	13.42	7.56
800	13.92	8.06

NOTE:
1) GASKETS THROUGHOUT



REVISION			BY & DATE	CHK	ANG	±1/2"	FINISH	GENERAL PURPOSE	SIZE	DRAWING NO	REV
05	ADDED FAN GUARD DIMENSIONS PER SALES	PG	1/5/2011	DEC					B	028777	05
04	ADDED DASH NO. 675	PG	5/21/2010	X							
03	ADDED ENERGY SAVINGS DECAL	PG	5/19/2010	.XX							
02	ADD "C" DIM. PER ISAAC 09-4157	LST	10/1/2009	.XXX							
01	REVISED GD&T POSITIONING & CALLOUT	KMM	8/27/07	.XXX							



ELECTRIC MOTORS
GEARMOTORS
AND DRIVES

DRAWN KMM 08/02/07

CHK

APPR

SCALE 7:16

REF 028504.00

FMF 120038.00

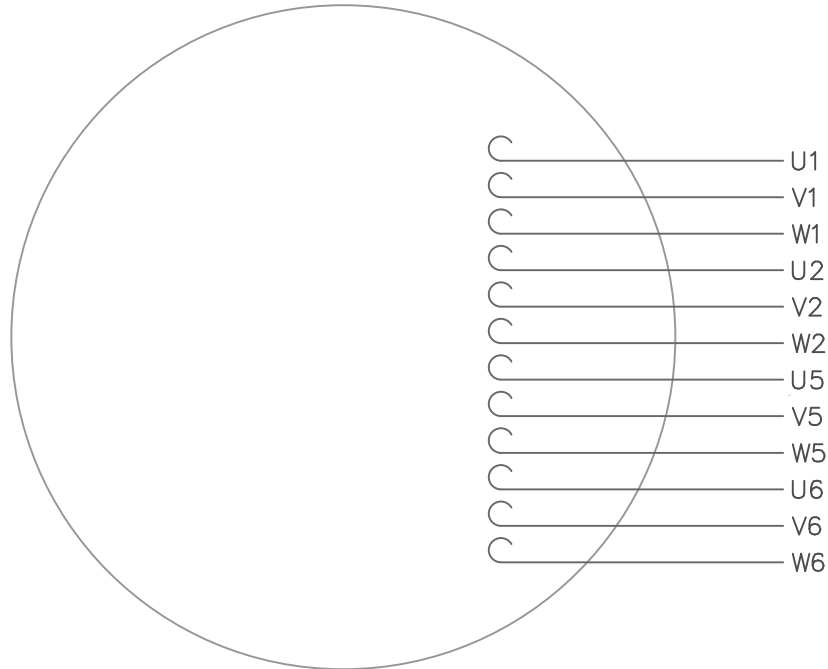
PAGE OF



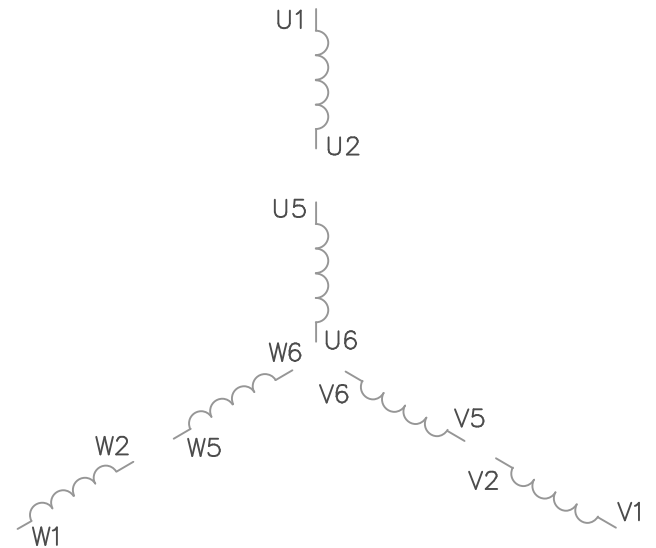
NETWORK FILE NAME 028777

REV 05

VIEW FROM OUTSIDE OF MOTOR AT SWITCH END.



LINE LEADS



VOLTAGE	L1	L2	L3	JOIN
(2Δ) LOW	U1,W2 U5,W6	V1,U2 V5,U6	W1,V2 W5,V6	-----
(2Y) MEDIUM	U1,U5	V1,V5	W1,W5	(U2,V2,W2) (U6,V6,W6)
(1Δ) HIGH	U1,W6	V1,U6	W1,V6	(U2,U5) (V2,V5) (W2,W5)

TOLERANCES UNLESS OTHERWISE SPECIFIED

DECIMALS

.00 ± .01

.000 ± .005

.0000 ± .0005

FRACTIONS ± 1/64

ANGLES ± 1/2°

INCH/MM

LEESON ELECTRIC CORPORATION

DRAWN GWS 2/23/96

CH'K'D.

APPR.

SCALE 1=1

REF. 005352 PG 3

FMF

TITLE

MAT'L.

FINISH

EXT. WIRING DIAGRAM
TYPE "T" W/O PROTECTOR

DECAL - 080590

STOCK

SIZE

A

DRAWING NO.

005381-01

1 REDRAWN TO CURRENT STANDARDS DBT 05/30/97

NO. REVISION BY DATE

THIS DRAWING IN DESIGN AND DETAIL IS OUR PROPERTY AND MUST NOT BE USED EXCEPT IN CONNECTION WITH OUR WORK ALL RIGHTS OF DESIGN AND INVENTION ARE RESERVED



1051 CHEYENNE AVE.
GRAFTON, WI 53024
PH. 262-377-8810

CERTIFICATION DATA SHEET

CATALOG #: 121274.00

CONN. DIAGRAM: 005381.01
OUTLINE: 028777-600
WINDING #: T632183 4 A

MOUNTING: F1 ONLY

TYPICAL MOTOR PERFORMANCE DATA

HP	kW	SYNC. RPM	F.L. RPM	FRAME	ENCLOSURE	KVA CODE	DESIGN
1 1/2	1.12	3000	2850	143TC	TEFC	L	NO DESIGN CODE

PH	Hz	VOLTS	AMPS	START TYPE	DUTY	INSL	S.F.	AMB°C
3	50	220/380	5/2.9/2.5	ACROSS THE LINE	CONTINUOUS	B4	1.15	40

FULL LOAD EFF:	80	3/4 LOAD EFF:	77.1	1/2 LOAD EFF:	77.5	GTD. EFF	ELEC. TYPE
FULL LOAD PF:	79	3/4 LOAD PF:	67.3	1/2 LOAD PF:	53.9	0	SQ CAGE IND RUN

F.L. TORQUE	LOCKED ROTOR AMPS	L.R. TORQUE	B.D. TORQUE	F.L. RISE°C
2.71 LB-FT	36 / 20.8	9 LB-FT 333 %	10.5 LB-FT 389 %	75

SOUND PRESSURE @ 3 FT.	SOUND POWER	ROTOR WK^2	MAX. WK^2	SAFE STALL TIME	STARTS / HOUR	APPROX. MOTOR WGT
0 dBA	10 dBA	0.053 LB-FT^2	0.1 LB-FT^2	0 SEC.	0	0 LBS.

*** SUPPLEMENTAL INFORMATION ***

DE BRACKET TYPE	ODE BRACKET TYPE	MOUNT TYPE	ORIENTATION	SEVERE DUTY	HAZARDOUS LOCATION	DRIP COVER	SCREENS	PAINT
C-FACE	STANDARD	ROUND	HORIZONTAL	FALSE	NONE	FALSE	NONE	BLUE - LEESON (ENAMEL)

BEARINGS		GREASE	SHAFT TYPE	SPECIAL DE	SPECIAL ODE	SHAFT MATERIAL	FRAME MATERIAL
DE	ODE						
BALL	BALL	POLYREX EM	T	NONE	NONE	1144 STRESSPROOF (C-223)	ROLLED STEEL
6205	6203						

THERMO-PROTECTORS				THERMISTORS	CONTROL	SPACE HEATERS
THERMOSTATS	PROTECTORS	WDG RTDs	BRG RTDs			
NONE	NOT	NONE	NONE	NONE	FALSE	NONE VOLTS

* N O T E S *	INVERTER TORQUE: NONE INV. HP SPEED RANGE: NONE
	ENCODER: NONE NONE NONE NONE NONE PPR
	BRAKE: NONE NONE NONE P/N NONE NONE NONE NONE FT-LB NONE V NONE Hz

Data Sheet

Date: 1/31/2018

121274.00



Data @ **380 V**

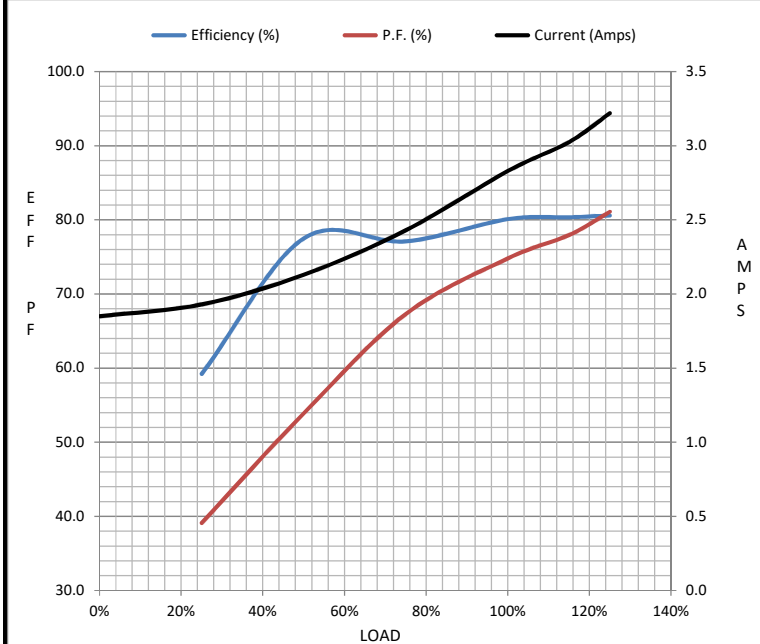
Motor Load Data

Load	0%	25%	50%	75%	100%	115%	125%	LR
Current (Amps)	1.85	1.93	2.13	2.43	2.83	3.0	3.2	20.8
Torque (ft-lb)	0.00	0.70	1.40	2.00	2.71	3.1	3.4	9.0
RPM	3000	2966	2947	2921	2893	2,883	2867	0
Efficiency (%)		59.2	77.5	77.1	80.1	80.4	80.6	
P.F. (%)	13.5	39.1	53.9	67.3	74.8	78.0	81.1	0.0

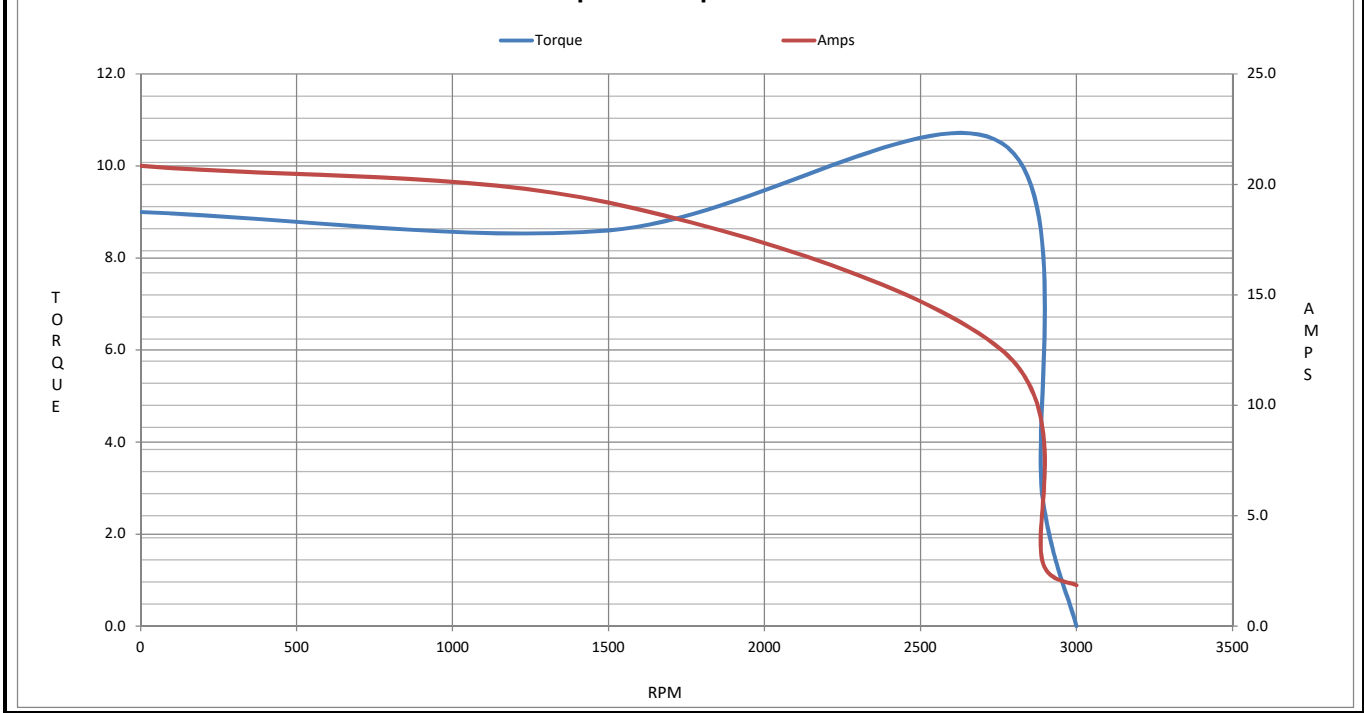
Motor Speed Data

	LR	Pull-Up	BD	Rated	Idle
Speed (RPM)	0	1500	2760	2893	3000
Current (Amps)	20.8	19.2	12.5	2.83	1.85
Torque (ft-lb)	9.0	8.6	10.5	2.71	0.00

Information Block				
HP	1.5			
Sync. RPM	3000			
Frame	140			
Enclosure	TEFC			
Construction	NA			
Voltage	220/380 V			
Frequency	50 Hz			
Design	B			
LR Code letter	L			
Service Factor	1.0			
Temp Rise @ FL	75 °C			
Duty	CONT			
Ambient	40 °C			
Elevation	1,000 feet			
Rotor/Shaft wk ²	0.05 Lb-Ft ²			
Ref Wdg	T632183 NONE			
Sound Pressure @ 1M	0 dBA			
VFD Rating	NONE			
Outline Dwg	028777-600			
Conn. Diag	005381.01			
Additional Specifications:				
0				
0				
EQUIV CKT (OHMS / PHASE)				
R1	R2	X1	X2	Xm
0.0000	0.0000	0.0000	0.0000	0.0000



Speed - Torque Curve



EC Declaration of Conformity

The undersigned representing
the manufacturer:

Regal Beloit America
1946 West Cook Road
Fort Wayne, IN 46818

and the authorized representative
established within the Community:

Regal Beloit Italy
Via Modena, 18
24040 Ciserano(BG) - Italy

are committed to providing customers with products that comply with applicable regulations and international protocols to which they are subject, including the requirements of the European Parliament Directive on the Harmonization of the laws relating to electrical equipment designed for use within certain voltage limits (2014/35/EU).

Regal Beloit America declares that the following product(s), to which this declaration relates, are in conformity with the relevant sections of the EC standards listed below.

This statement supersedes any statements previously issued pertaining to the product(s) listed below and is subject to change without notice.

Model No : 121274.00

(Model No. may contain prefix and/or suffix characters)

Catalog No : 121274.00

Rework No : N/A

Directives :

Low Voltage Directive 2014/35/EU

Harmonized Standards Used :

EN 60034-1: 2010 (IEC 60034-1: 2010)

EN 60034-5: 2001/A1:2007 (IEC 60034-5: 2000/A1:2006)

Authorized Representative:



Zach Stauffer
Vice President, Engineering

Authorized Representative in the Community:



Stefano Casiraghi
Technology Director, Engineering

Created on 07/08/2025

CE 25