

PRODUCT INFORMATION PACKET



Model No: 145TBDR5309

Catalog No: Z304

Crop Dryer Motor, 3 & 4.50 HP, 1 Ph, 60 & 60 Hz, 230 & 230 V, 3600 & 3600 RPM, 145TZ Frame, DPAO



Regal and LEESON are trademarks of Regal Rexnord Corporation or one of its affiliated companies.
©2025 Regal Rexnord Corporation, All Rights Reserved. MC017097E



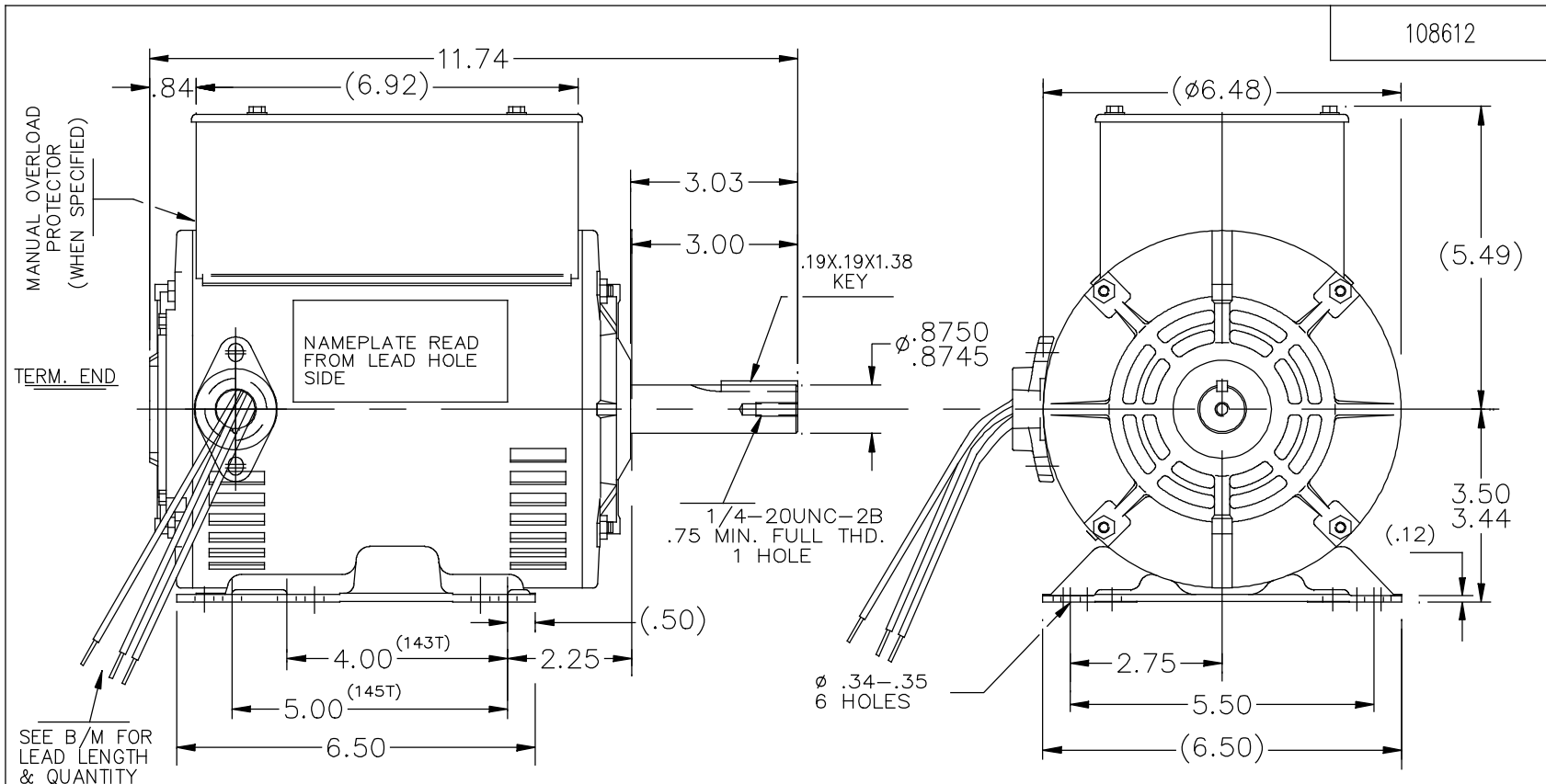


Nameplate Specifications

Phase	1	Output HP	3 & 4.50 Hp
Output KW	2.2 & 3.4 kW	Voltage	230 & 230 V
Speed	3510 & 3450 rpm	Service Factor	1.5 & 1.0
Frame	145TZ	Enclosure	Drip Proof Air Over
Thermal Protection	Automatic	Efficiency	81.5 & 80 %
Ambient Temperature	40 °C	Frequency	60 & 60 Hz
Current	12.5 & 19.1 A	Power Factor	97
Duty	Continuous	Insulation Class	F
Design Code	L	KVA Code	E
Drive End Bearing Size	6205	Opp Drive End Bearing Size	6203
UL	No	CSA	Y
CE	N	IP Code	22
Number of Speeds	1		

Technical Specifications

Electrical Type	Capacitor Start Capacitor Run	Starting Method	Across The Line
Poles	2	Rotation	Selective Counterclockwise
Resistance Main	2.89 Ohms	Mounting	Rigid Base
Motor Orientation	Horizontal	Drive End Bearing	Ball
Opp Drive End Bearing	Ball	Frame Material	Rolled Steel
Shaft Type	Single Special Extension	Overall Length	13.74 in
Frame Length	9.06 in	Shaft Diameter	0.875 in
Shaft Extension	3.03 in	Assembly/Box Mounting	F1 ONLY
Connection Drawing	102006-74	Outline Drawing	108612-906



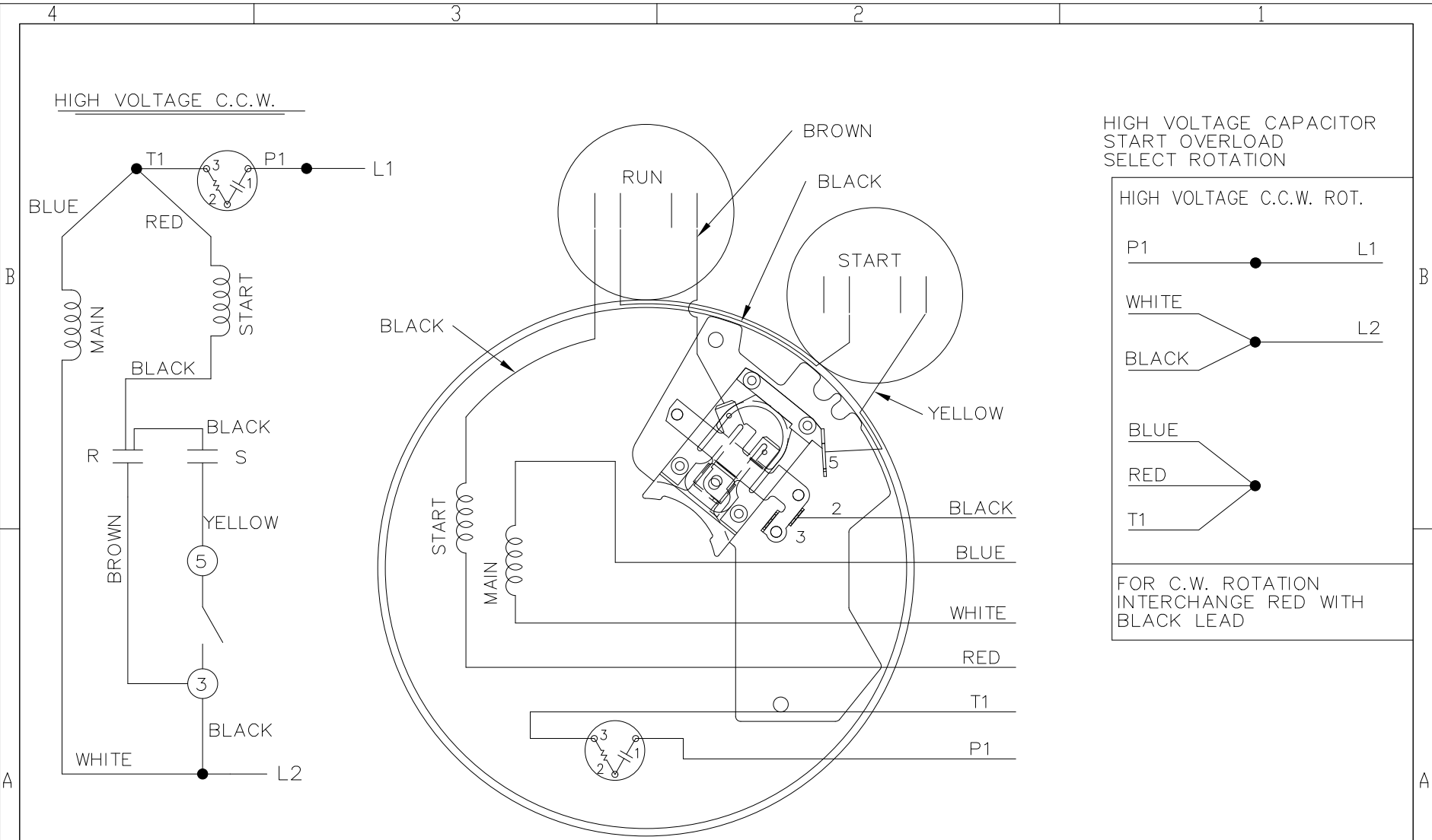
DASH	C	DASH	C
756	12.24	906	13.74
806	12.74	956	14.24
856	13.24		

				TOLERANCES UNLESS SPECIFIED		DRAWN MVG 02/02/2018	
				DEC.	INCHES	CHK SM 02/02/2018	
				.X	±.1	APPD SM 02/02/2018	
				.XX	±.03	SCALE 3=8	
				.XXX	±.005	REF 100383	
A	NEW DRAWING	MVG 02/02/18	SM	.XXXX	±.0005	FMF	
NO.	REVISION	BY & DATE	CHK	ANG	±7'30"	PREV	
THIS DRAWING IN DESIGN AND DETAIL IS OUR PROPERTY AND MUST NOT BE USED EXCEPT IN CONNECTION WITH OUR WORK ALL RIGHTS OF DESIGN AND INVENTION ARE RESERVED THIS IS AN ELECTRONICALLY GENERATED DOCUMENT - DO NOT SCALE THIS PRINT						SIZE	DRAWING NO. PAGE OF REV.
						A	108612 A

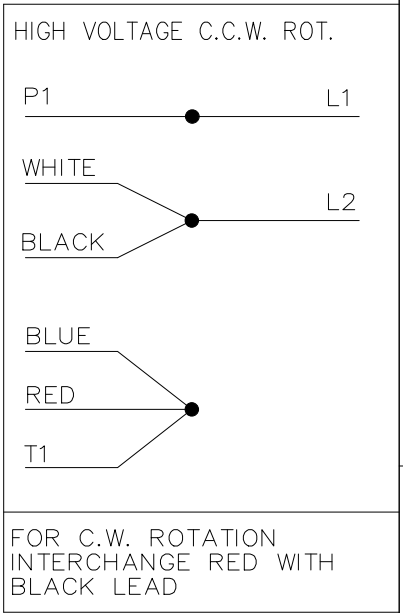


TITLE OUTLINE
140 FR. - DR.PR. - BB

CAD FILE 108612



HIGH VOLTAGE CAPACITOR
START OVERLOAD
SELECT ROTATION



DRAWING REVISION 5	REVISION BY KVDG	REV DATE / ° DATE 05/27/2025	TOLERANCES (EXCEPT AS NOTED): DEC. INCH mm ANGLE .X ±0.1 [±.3] ±0.5° .XX ±0.01 [±0.3] .XXX ±0.005 [±0.13] .XXXX ±0.0005 [±0.013] REMOVE BURRS & BREAK SHARP EDGES: .003/.015 [.08/.38] X 45° CORNER FILLETS: R.02 [-.5] MACHINED SURFACES: 125 INCH 3.2 mm	DRAWN BY KL	Regal Beloit America, Inc.	
REQUEST NUMBER ECR-0243058	APPROVED BY JIS	DATE 05/27/2025	DATE 11-19-1993	DATE 12-07-1993		
REQUEST NUMBER DESCRIPTION CHD FROM MARATHON TO RRX TEMPLATE			DESCRIPTION CONNECTION DIAGRAM		MATERIAL PROCESS/FINISH	
<small>COPYRIGHT (PER REVISION DATE) REGAL BELOIT AMERICA, INC. ALL RIGHTS RESERVED. PROPRIETARY AND CONFIDENTIAL INFORMATION - THIS DOCUMENT IS THE PROPERTY OF REGAL BELOIT AMERICA, INC. ("OWNER") AND CONTAINS OWNER'S PROPRIETARY INFORMATION. ANY PERSON, CORPORATION OR OTHER FIRM RECEIVING IT IS DEEMED, BY RECEIVING IT, TO AGREE THAT IT, AND/OR ANY PART OF IT, SHALL NOT BE DISCLOSED TO ANY PERSON, CORPORATION OR OTHER ENTITY, DUPLICATED, AND/OR USED, EXCEPT AS EXPRESSLY APPROVED IN WRITING IN ADVANCE BY OWNER. THIS DOCUMENT SHALL BE RETURNED TO OWNER UPON REQUEST. IT MAY BE SUBJECT TO CERTAIN RESTRICTIONS UNDER APPLICABLE EXPORT CONTROL LAWS AND REGULATIONS.</small>			THIRD ANGLE PROJECTION	SIZE A		DRAWING NUMBER 102006-74

CERTIFICATION DATA SHEET

Model#: 145TBDR5309 AE
CONN. DIAGRAM: A-102006-74
OUTLINE: A-100383-906

WINDING#: ZB227 NONE 4
ASSEMBLY: F1 ONLY

TYPICAL MOTOR PERFORMANCE DATA

HP	KW	SYNC. RPM	F.L. RPM	FRAME	ENCLOSURE	KVA CODE	DESIGN
3&4 1/2	2.24&3.36	3600	3510&3450	145TZ	DPAO	E	L

PH	Hz	VOLTS	FL AMPS	START TYPE	DUTY	INSL	S.F	AMB°C	ELEVATION
1	60/60	230#230	13&19	ACROSS THE LINE	CONTINUOUS	F3	1.5/1.0	40	3300

FULL LOAD EFF: 81.5&80	3/4 LOAD EFF: 82	1/2 LOAD EFF: 80.5	GTD. EFF	ELEC. TYPE	NO LOAD AMPS
FULL LOAD PF: 97&96.5	3/4 LOAD PF: 97	1/2 LOAD PF: 96	0	CAP START CAP RUN	3.4

F.L. TORQUE	LOCKED ROTOR AMPS	L.R. TORQUE	B.D. TORQUE	F.L. RISE°C
6.8 LB-FT	94	10.8 LB-FT 0	12.6 LB-FT 0	0

SOUND PRESSURE @ 3 FT.	SOUND POWER	ROTOR WK^2	MAX. WK^2	SAFE STALL TIME	STARTS /HOUR	APPROX. MOTOR WGT
0 dBA	10 dBA	0 LB-FT^2	0 LB-FT^2	0 SEC.	0	0 LBS.

***** SUPPLEMENTAL INFORMATION *****

DE BRACKET TYPE	ODE BRACKET TYPE	MOUNT TYPE	ORIENTATION	SEVERE DUTY	HAZARDOUS LOCATION	DRIP COVER	SCREENS	PAINT
STANDARD	STANDARD	RIGID	HORIZONTAL	FALSE	NONE	FALSE	NONE	GRAY (POWDER)

BEARINGS		GREASE	SHAFT TYPE	SPECIAL DE	SPECIAL ODE	SHAFT MATERIAL	FRAME MATERIAL
DE	OPE						
BALL	BALL	POLYREX EM	SGL SPL EXT	0.875 x 3.00 IN SEK	NONE	1144 STRESSPROOF (C-223)	ROLLED STEEL
6205	6203						

THERMO-PROTECTORS				THERMISTORS	CONTROL	SPACE /n HEATERS
THERMOSTATS	PROTECTORS	WDG RTDs	BRG RTDs			
NONE	AUTOMATIC	NONE	NONE	NONE	FALSE	NONE VOLTS

If Inverter equals NONE, contact factory for further information

INVERTER TORQUE: NONE
INV. HP SPEED RANGE: NONE
ENCODER: NONE
NONE NONE
NONE NONE PPR
BRAKE: NONE NONE
NONE P/N NONE
NONE NONE
NONE FT-LB NONE V NONE Hz

*
N
O
T
E
S
*

DATE: 06/23/2017 01:29:17 AM
 FORM 3531 REV.3 02/07/99

** Subject to change without notice.



REGAL REXNORD CORPORATION
TYPICAL PERFORMANCE CURVE for AC MOTOR

Customer

Curve at

230 Volts
60 HZ
4.5 HP

HP 3&4.5

PHASE 1

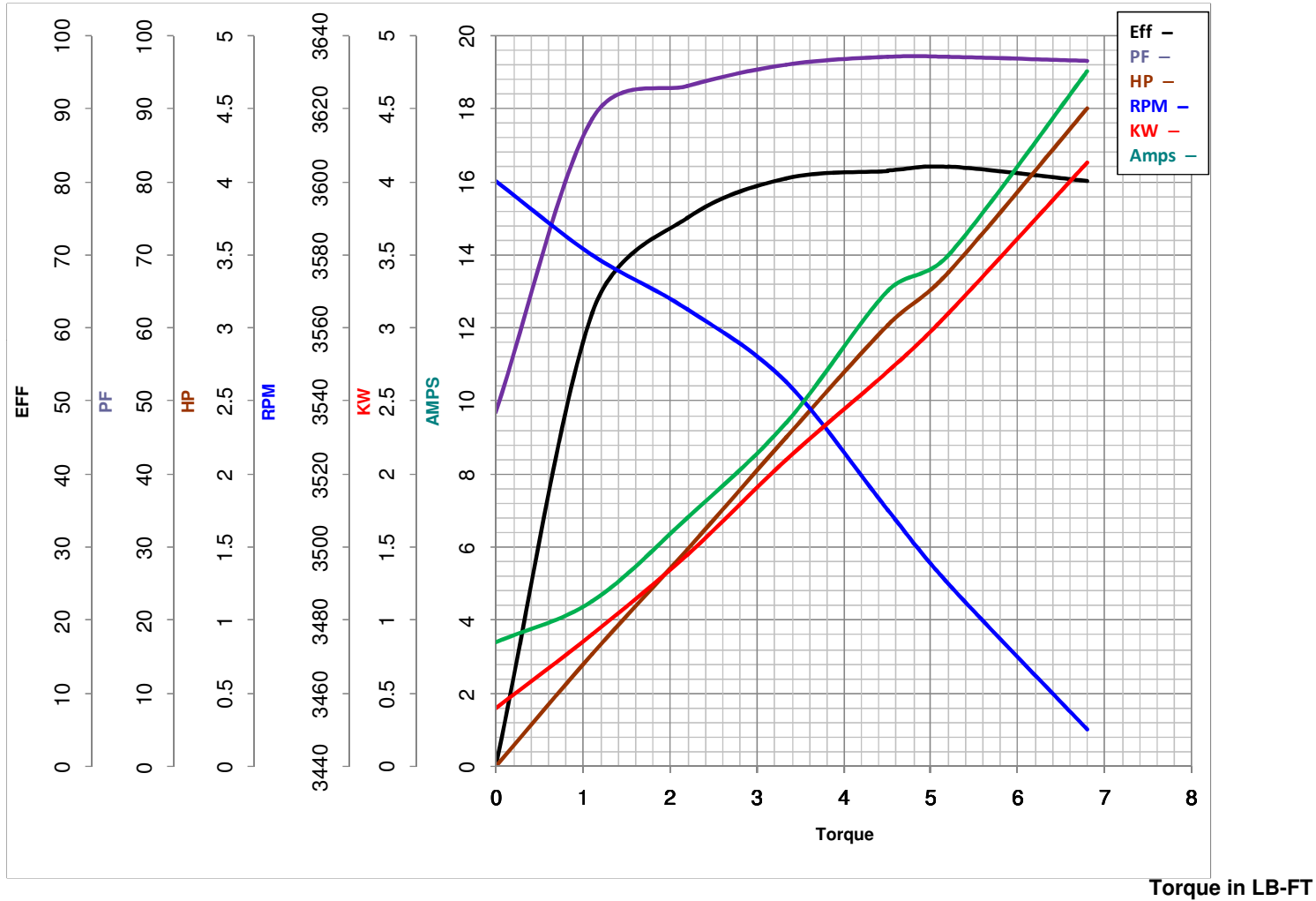
Model No 145TBDR5309

VOLTS 230&230

Catalog No Z304

HZ 60&60

RPM 3510&3450



FL TORQUE	<u>6.8</u>	LB-FT	FL AMPS	<u>13</u>	
BD TORQUE	<u>12.6</u>	LB-FT	PU TORQUE	<u>9.4</u>	LB-FT
LR TORQUE	<u>10.8</u>	LB-FT	LR AMPS	<u>94</u>	
WINDING	<u>ZB227-</u>				Date