

PRODUCT INFORMATION PACKET

Model No: 3144

Catalog No: 3144

1/3 HP OEM Replacement Motor, 1075 RPM, 4 Speed, 115 Volts, 48 Frame, OAO



Regal and are trademarks of Regal Rexnord Corporation or one of its affiliated companies.
©2022 Regal Rexnord Corporation, All Rights Reserved. MC017097E

Nameplate Specifications

Output HP	1/3 Hp	Output KW	0.25 kW
Frequency	60 Hz	Voltage	115 V
Current	6.10 A	Speed	1075 rpm
Service Factor	1	Phase	1
Duty	Continuous Air Over	Insulation Class	B
Frame	48	Enclosure	Open Air Over
Thermal Protection	Thermally Protected	Ambient Temperature	40 °C
UL	Recognized	CSA	Y
CE	N	Number of Speeds	4

Technical Specifications

Electrical Type	Permanent Split Capacitor	Poles	6
Rotation	Counterclockwise	Mounting	Lug
Motor Orientation	Any	Drive End Bearing	Sleeve
Opp Drive End Bearing	Sleeve	Frame Material	Rolled Steel
Shaft Type	Flat	Overall Length	8.28 in
Frame Length	3.57 in	Shaft Diameter	0.500 in
Shaft Extension	4.00 in		
Outline Drawing	5KCP39HGT584S	Connection Drawing	NP24X327580

This is an uncontrolled document once printed or downloaded and is subject to change without notice. Date Created:04/12/2022

RBC PROPRIETARY AND CONFIDENTIAL INFORMATION
 This document is the property of REGAL-BELOIT CORPORATION ("RBC") including its subsidiaries and divisions and contains proprietary information of RBC. This document is loaned on the express condition that neither the information contained there in shall be disclosed to others without the express written consent of RBC and that the information shall be used by the recipient only as approved expressly by RBC. This document shall be returned to RBC upon its request. This document may be subject to certain restrictions under the U.S. export control laws and regulations.

STOCK 3144

REVISIONS	
REV	DESCRIPTION
1	CAS 12/30/97 REISSUED
2	MODIFIED THE FORMAT PER CR#05-1777 RB 09/22/05 "C" MAX.

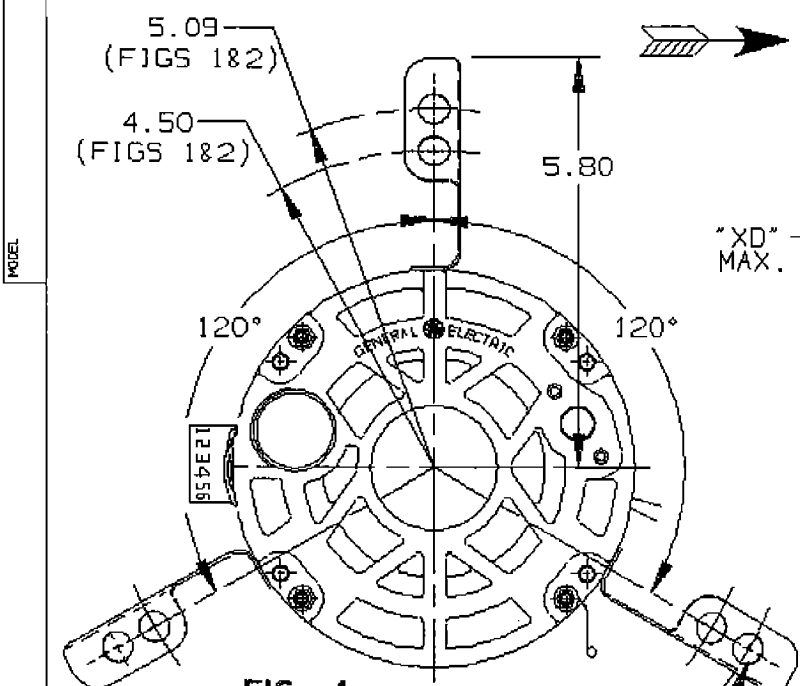


FIG. 1

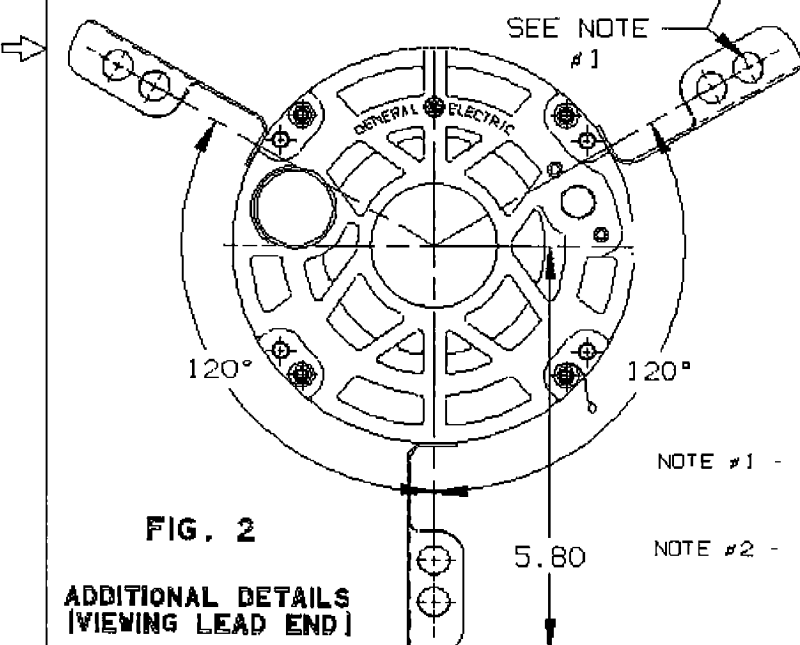
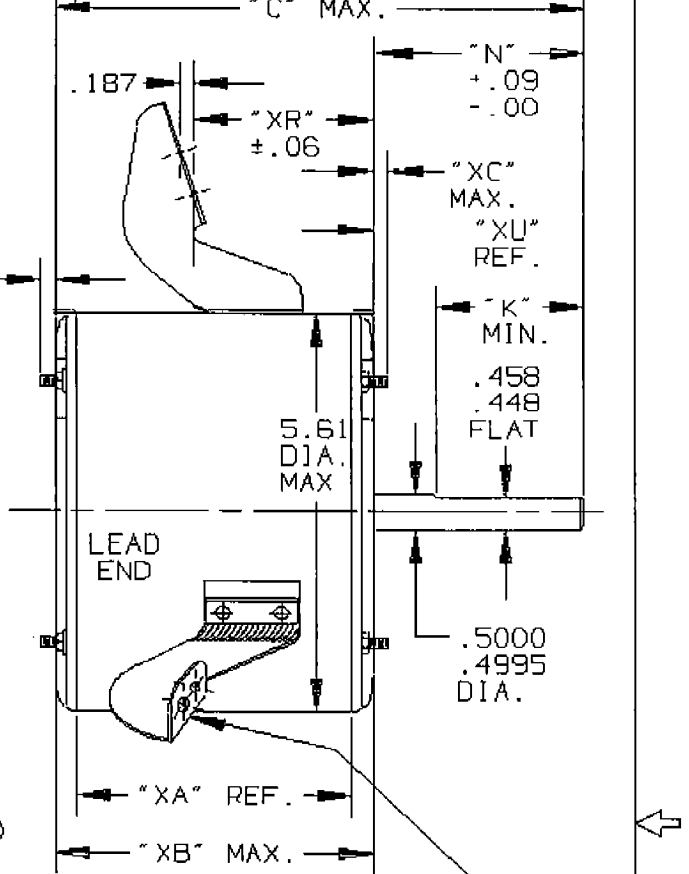


FIG. 2

ADDITIONAL DETAILS
 (VIEWING LEAD END)



LUGS FOR 9/10" BLOWER WHEEL.
 GROM IN 10"
 HOLES IN LUGS ARE FOR .25 DIA. SCREW.

MAX. VARIATION BETWEEN ALL LUG MOUNTING SURFACES IS .040"

NOTE #1 - THE THREE LUGS SHOULD FIT A CONICAL GAGE PLATE WITH THREE PINS .25 DIAMETER LOCATED ON THE BASIC POSITIONS

NOTE #2 - ROTATION AND LEAD LOCATION IN DEGREES FROM TOP OF MOTOR ARE GIVEN AS VIEWED IN THE DIRECTION OF ARROW.

8.30	4.00	3.50		3.57	4.23	.14	-		3.03	1
"C"	"N"	"K"		"XA"	"XB"	"XC"	"XD"		"XR"	LUG FIG.

ROTATION CCW VIEWED IN DIRECTION OF ARROW.
 VENTILATION SYSTEM
 SHELL - OPEN
 OPPOSITE LEAD END SHIELD - OPEN
 LEAD END SHIELD - OPEN
 LEADS EXIT THRU SHELL 270 DEGREES FROM TOP OF MOTOR VIEWED IN DIRECTION OF ARROW

FF1T



REGAL-BELOIT CORPORATION
 FORT WAYNE, INDIANA

MOTOR OUTLINE

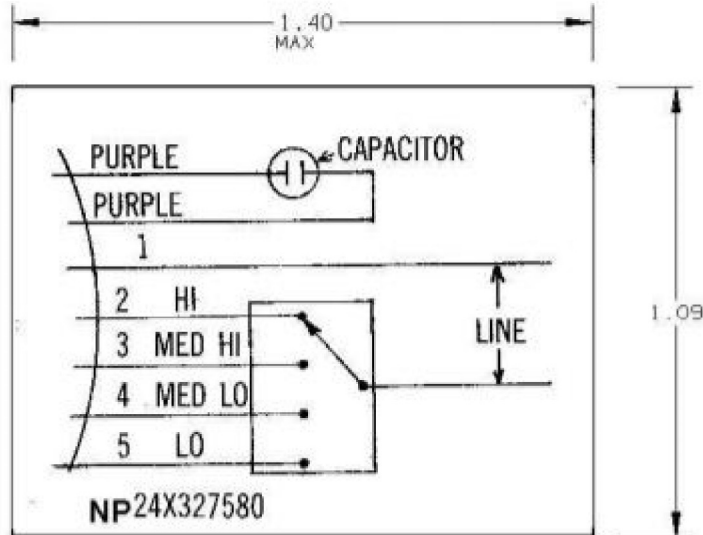
MODEL	ISSUED	SCALE
5KCP39HGT584 S	CAS 11/5/97	4

DISCLAIMER STATEMENT

This document is the property of REGAL-BELOIT Corporation (REGAL) including its subsidiaries and divisions and contains proprietary information of REGAL. This document is loaned on the express condition that neither it nor the information contained therein is shall be disclosed to others without the express written consent of REGAL and that the information shall be used by the recipient only as approved expressly by REGAL. This document shall be returned to REGAL upon its request. This document may be subject to certain restrictions under the U.S. export control law and regulations.

REVISIONS


REV	DESCRIPTION
1	Convert to REC Format JAR 10 2005



TYPE FACE: COLORS OR NUMBERS DENOTING LEAD IDENTIFICATION AND N.P. NUMBER ARE TO BE 18 POINT NEWS GOTHIC CONDENSED. OTHER INFORMATION SHOULD BE 18 POINT IF SPACE ALLOWS, OTHERWISE USE 14 POINT.

MATERIALS: 4 MIL WHITE VINYL ADHESIVE STOCK GE SPEC A50FG41-S1
BLACK INK GE SPEC A50FM48

NOTE: THE BOX LINES AND DIMENSIONS REPRESENT THE SIZE OF THE TAPE TO BE USED. DO NOT INCLUDE THESE IN STAMP FORMAT.

 REGAL-BELOIT CORPORATION			
CONNECTION DIAGRAM			
FILE: _____ DPC: _____	NP24X327580	ISSUED CAS 4/89	SCALE NO