

PRODUCT INFORMATION PACKET

Model No: 323A

Catalog No: 323A

1/12-1/20-1/30 HP Fan Coil / Room Air Conditioner Motor, 1550 RPM, 3 Speed, 115 Volts, 42 Frame, OAO



Regal and are trademarks of Regal Rexnord Corporation or one of its affiliated companies.
©2022 Regal Rexnord Corporation, All Rights Reserved. MC017097E

Nameplate Specifications

Output HP	1/12-1/20-1/30 Hp	Output KW	0.06 kW
Frequency	60 Hz	Voltage	115 V
Current	3.2/1.8/1.3 A	Speed	1550 rpm
Service Factor	1	Phase	1
Duty	Continuous Air Over	Insulation Class	A
Frame	42Y	Enclosure	Open Enclosed
Thermal Protection	Automatic	Ambient Temperature	40 °C
UL	Recognized	CSA	Y
CE	N	Number of Speeds	3

Technical Specifications

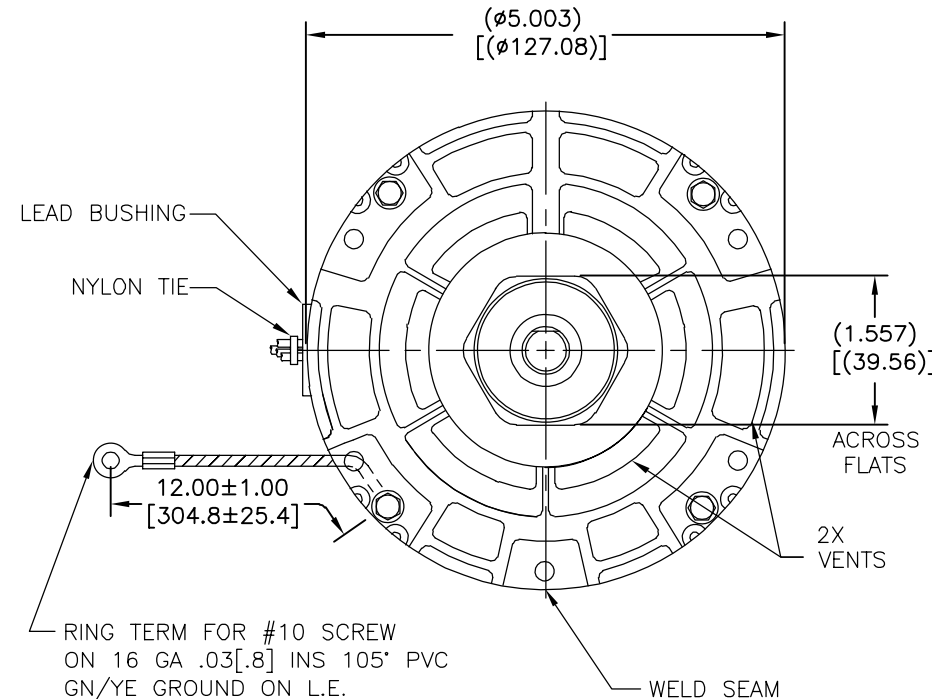
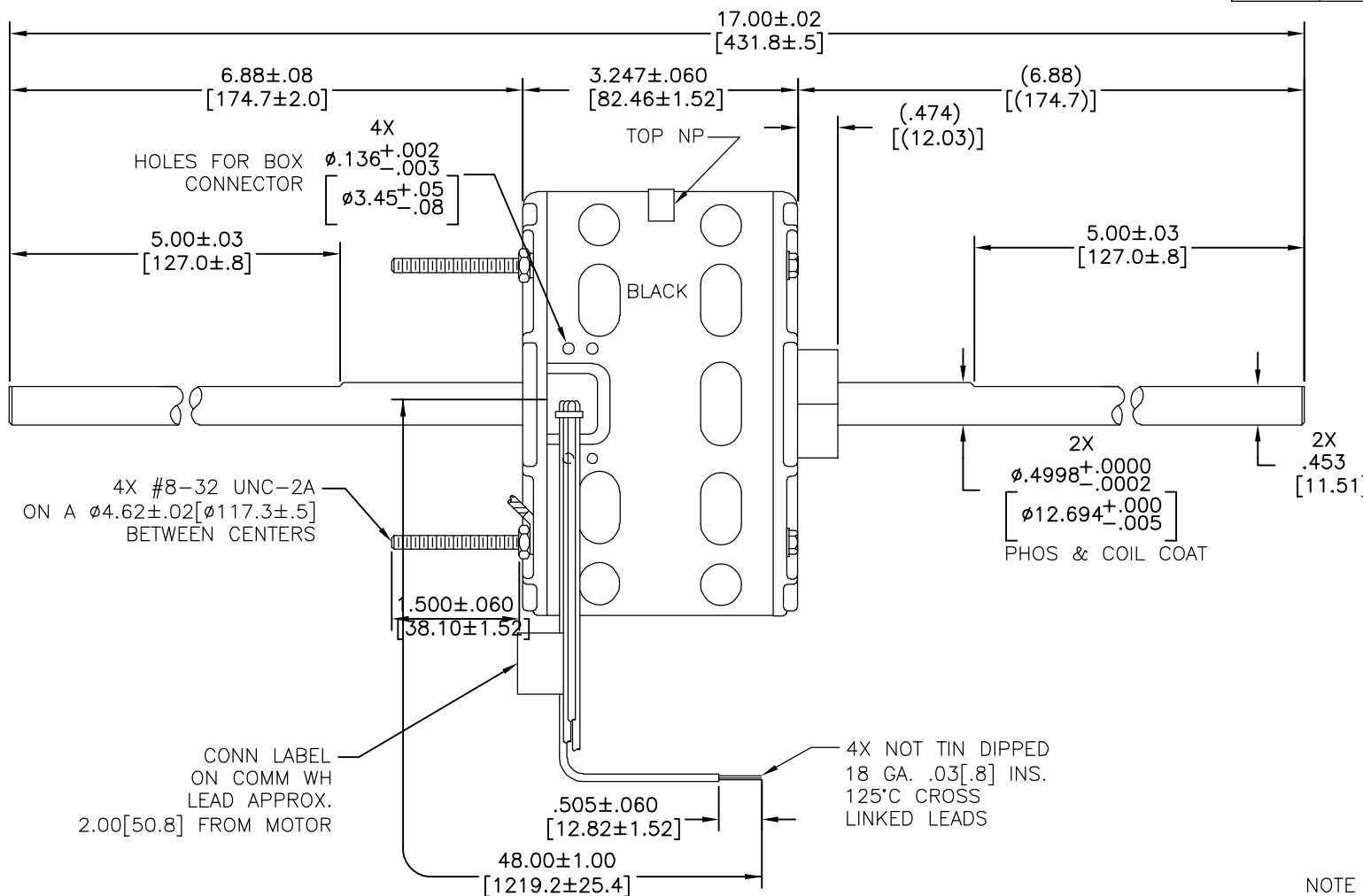
Electrical Type	Shaded Pole	Starting Method	Across The Line
Poles	4	Rotation	Counterclockwise Lead End
Mounting	Extended Studs	Motor Orientation	Horizontal
Drive End Bearing	Sleeve	Opp Drive End Bearing	Sleeve
Frame Material	Rolled Steel	Shaft Type	Flat
Overall Length	17.00 in	Frame Length	2.42 in
Shaft Diameter	0.500 in	Shaft Extension	6.9X.5X6.9 in
Outline Drawing	DA2D7051-S01		

This is an uncontrolled document once printed or downloaded and is subject to change without notice. Date Created:04/19/2022

CUSTOMER IS SOLELY RESPONSIBLE FOR MOTOR PERFORMANCE AND SUITABILITY IN APPLICATIONS FOR CUSTOMER'S USES.

REV	ECO	REV BY	DATE	APPD	DATE
G	0029019	I.ORTIZ	10-17-2012	M.AVILA	10-17-2012

END PLAY .005[.13] MIN - .040[1.02] MAX
 MAX. SHAFT RUN OUT .001[.02] PER INCH
 MAX. RUN OUT NOT TO EXCEED .005[.13]



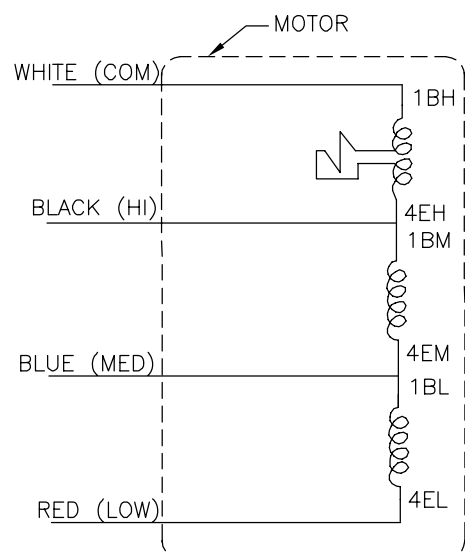
NOTE
 1. DISTRIBUTION PART NUMBER: 323A
 GRAINGER PART NUMBER: 4UU38

SHIP SEPARATE:
 (1) 72T7176A-66
 BAG ASSEMBLY

ELECTRICALLY PER
 SAMPLE S-8030D
 PERFORMANCE CURVE#32376

SCHEMATIC-274

ROT.: - CCWLE



NAMEPLATE DATA:

Century Tipp City, OH
 THERMALLY PROTECTED

SER. DATE & PO# PLT LTR MOD DA2D051N# []

VOLTS 115 HZ 60 AMPS
 RPM1550 SP3 PH CAP

INS CL AAMB 40C HP 1/12 ← ROTATION →
 BRG SLV BK HI 3.2A 1/12HP BU MED 1.8A 1/20HP
 RD LOW 1.3A 1/30HP WH COM ASSEMBLED IN MEXICO

CONN. LABEL
 63T7433-210

GEOMETRIC CHARACTERISTICS & SYMBOLS
 ▭ FLATNESS
 - STRAIGHTNESS
 < ANGLARITY
 ⊥ PERPENDICULARITY (SQUARENESS)
 // PARALLELISM
 ○ ROUNDNESS (CIRCULARITY)
 ∅ CYLINDRICITY
 △ PROFILE OF ANY SURFACE
 ∩ PROFILE OF ANY LINE
 † RUNOUT
 ⊕ TRUE POSITION
 ⊙ CONCENTRICITY
 = SYMMETRY
 ASME Y14.5M 1994

UNLESS OTHERWISE SPECIFIED
 DIM. TOLERANCES ARE AS FOLLOWS:
 INCH X XX XXX XXXX
 mm ±0.5 ±0.13 ±0.013
 ANG. ±.50 DEG
 REMOVE BURRS & BREAK SHARP EDGES:
 INCH .003-.015 mm 0.1-0.4
 CORNER FILLETS TO:
 INCH .020 mm 0.5
 MACHINE SURFACES:
 INCH 125 mm 3.2
 METRIC DIMS. SHOWN IN [BRACKETS]

DR BY:
 APPD:
 THIRD ANGLE PROJECTION
 EDS DATE 11-11-2011
 FORMAT REV H
 CONFIDENTIAL: THIS DRAWING AND ITS INFORMATION ARE THE EXCLUSIVE AND CONFIDENTIAL PROPERTY OF REGAL-BELOIT CORPORATION AND ARE NOT TO BE DISCLOSED, DUPLICATED, DISTRIBUTED OR OTHERWISE USED WITHOUT THE WRITTEN CONSENT OF REGAL-BELOIT CORPORATION. -ALL RIGHTS RESERVED.

REGAL REGAL-BELOIT CORPORATION

DESCRIPTION
 MODEL-RFHP-42FR
 OUTLINE

SIZE C DWG NO DA2D7051
 SCALE NONE SHEET 1

4

3

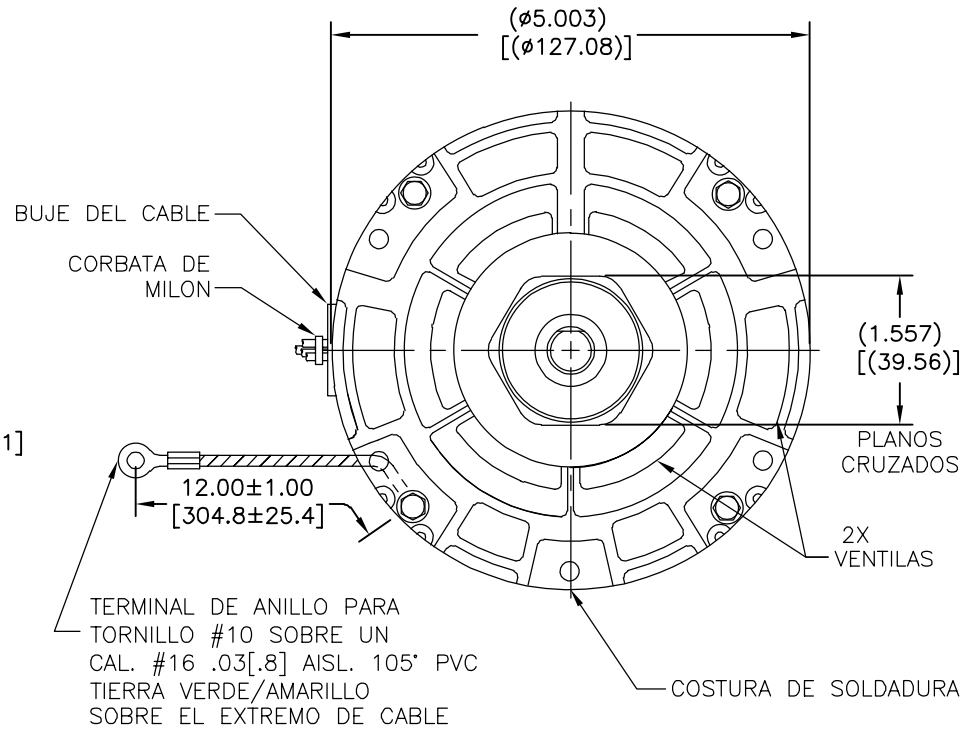
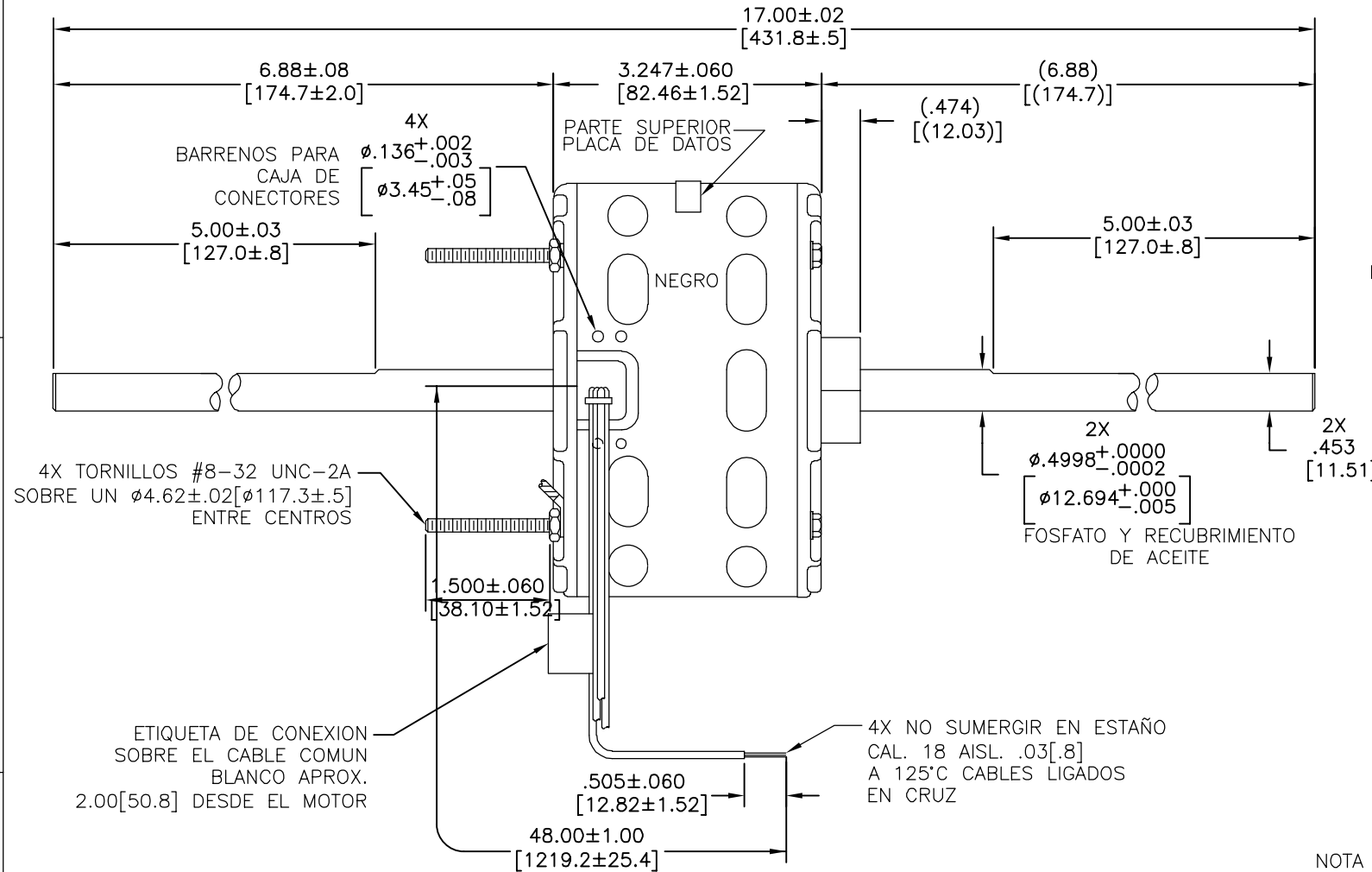
2

1

EL CLIENTE ES SOLO RESPONSABLE DEL RENDIMIENTO DEL MOTOR Y APLICACIONES CONVENIENTES PARA LOS USOS DEL CLIENTE.

REVISION:	ECO	REVISADO POR:	FECHA:	APROBADO POR:	FECHA:
G	0029019	I.ORTIZ	10-17-2012	M.AVILA	10-17-2012

JUEGO AXIAL .005[.13] MIN - .040[1.02] MAX
 MAX. OSCILAMIENTO DE FLECHA .001[.02] POR PULGADA
 MAX. OSCILAMIENTO NO EXCEDERA DE .005[.13]



NOTA
 1. NO. DE PARTE DE DISTRIBUCION: 323A
 NO. DE PARTE GRAINGER: 4UU38

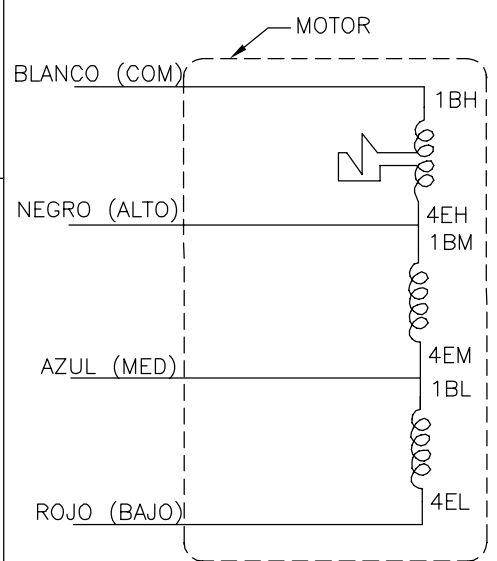
TRANSPORTAR POR SEPARADO:
 (1) 72T7176A-66
 ENSAMBLE DE BOLSA

ELECTRICAMENTE DE ACUERDO A
 MUESTRA S-8030D
 CURVA DE FUNCIONAMIENTO #32376

ESQUEMA-274

ROT.: - CCWLE

INF. PLACA DE DATOS:



Century Tipp City, OH
 THERMALLY PROTECTED

SER. DATE & PO# PLT LTR MOD DA2D051N# []

VOLTS 115 HZ 60 AMPS
 RPM1550 SP3 PH CAP

INS CL AAMB 40C HP 1/12 ← ROTATION →
 BRG SLV BK HI 3.2A 1/12HP BU MED 1.8A 1/20HP ASSEMBLED IN MEXICO
 RD LOW 1.3A 1/30HP WH COM

ETIQUETA DE CONEXION
 63T7433-210

CARACTERISTICAS DE GEOMETRIA Y SIMBOLOS
 ▽ PLANICIDAD
 - RECTITUD
 < ANGULARIDAD
 ⊥ PERPENDICULARIDAD (A ESCUADRA)
 // PARALELISMO
 ○ REDONDEZ (CIRCULARIDAD)
 ∅ CILINDRICIDAD
 △ PERFIL DE CUALQUIER SUPERFICIE
 ∇ PERFIL DE CUALQUIER LINEA
 ↗ VARIACION
 ⊕ POSICION REAL
 ⊙ CONCENTRICIDAD
 = SIMETRIA

ASME Y14.5M 1994

A MENOS QUE SE ESPECIFIQUE DE OTRA MANERA, LAS TOLERANCIAS DE LAS DIMS; SON LAS SIGUIENTES:
 PULG ±.1 ±.02 ±.005 ±.0005
 mm ±0.5 ±0.13 ±0.013
 ANG. ±50 GRADOS
 ELIMINAR REBABAS Y ORILLAS FILOSAS DEL BORDE.
 PULG .003-.015 mm 0.1-0.4
 FILETEAR ESQUINA: PULG .020 mm 0.5
 MAQUINAR SUPERFICIES
 PULG 125 mm 3.2

DIMS METRICAS MOSTRADAS [PARENTESIS]

DIBUJADO POR:
 APROBADO POR:
 TERCER ANGULO DE PROYECCION
 CONFIDENCIAL: ESTE DIBUJO Y SU INFORMACION SON PROPIEDAD DE USO EXCLUSIVO Y CONFIDENCIAL DE REGAL-BELOIT CORPORATION. Y NO DEBERAN SER REVELADOS, DUPLICADOS, DISTRIBUIDOS O USARSE DE OTRA MANERA SIN EL CONSENTIMIENTO ESCRITO DE REGAL-BELOIT CORPORATION. -TODOS LOS DERECHOS RESERVADOS.

REGAL REGAL-BELOIT CORPORATION

DESCRIPCION:
 MODEL-RFHP-42FR
 OUTLINE

TAMAÑO: C NUMERO DE DIBUJO: DA2D7051
 ESCALA: NONE HOJA: 1

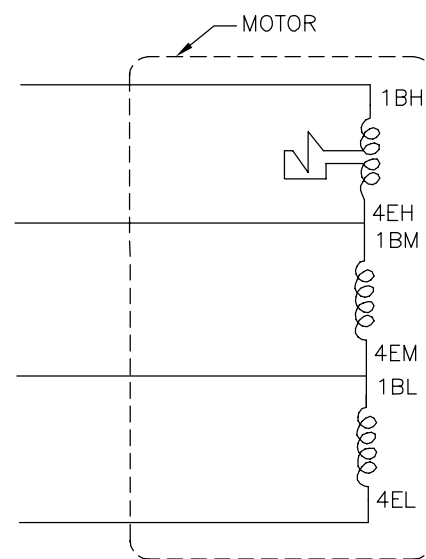
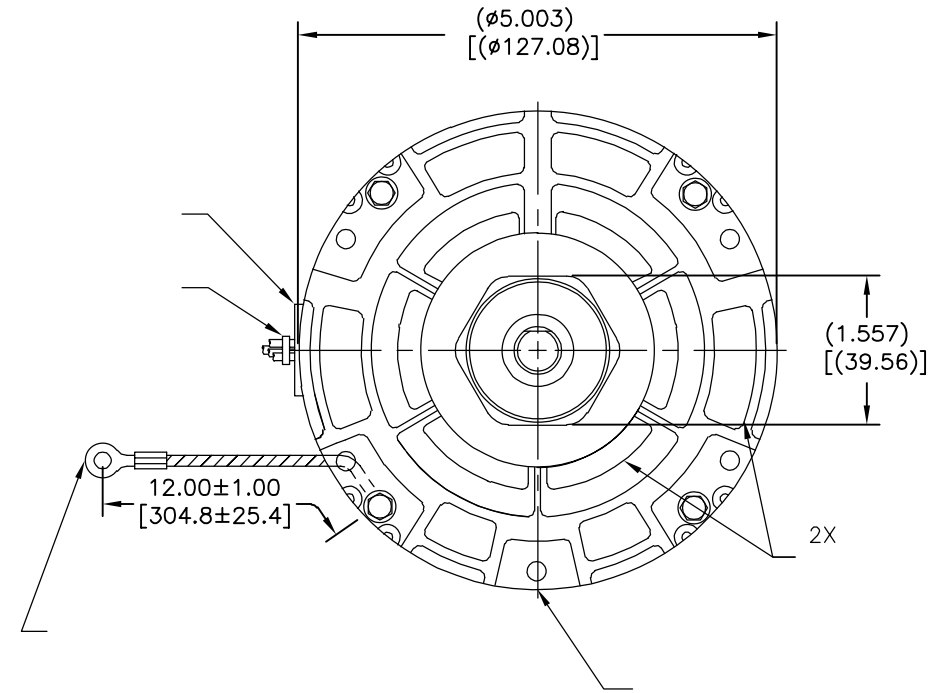
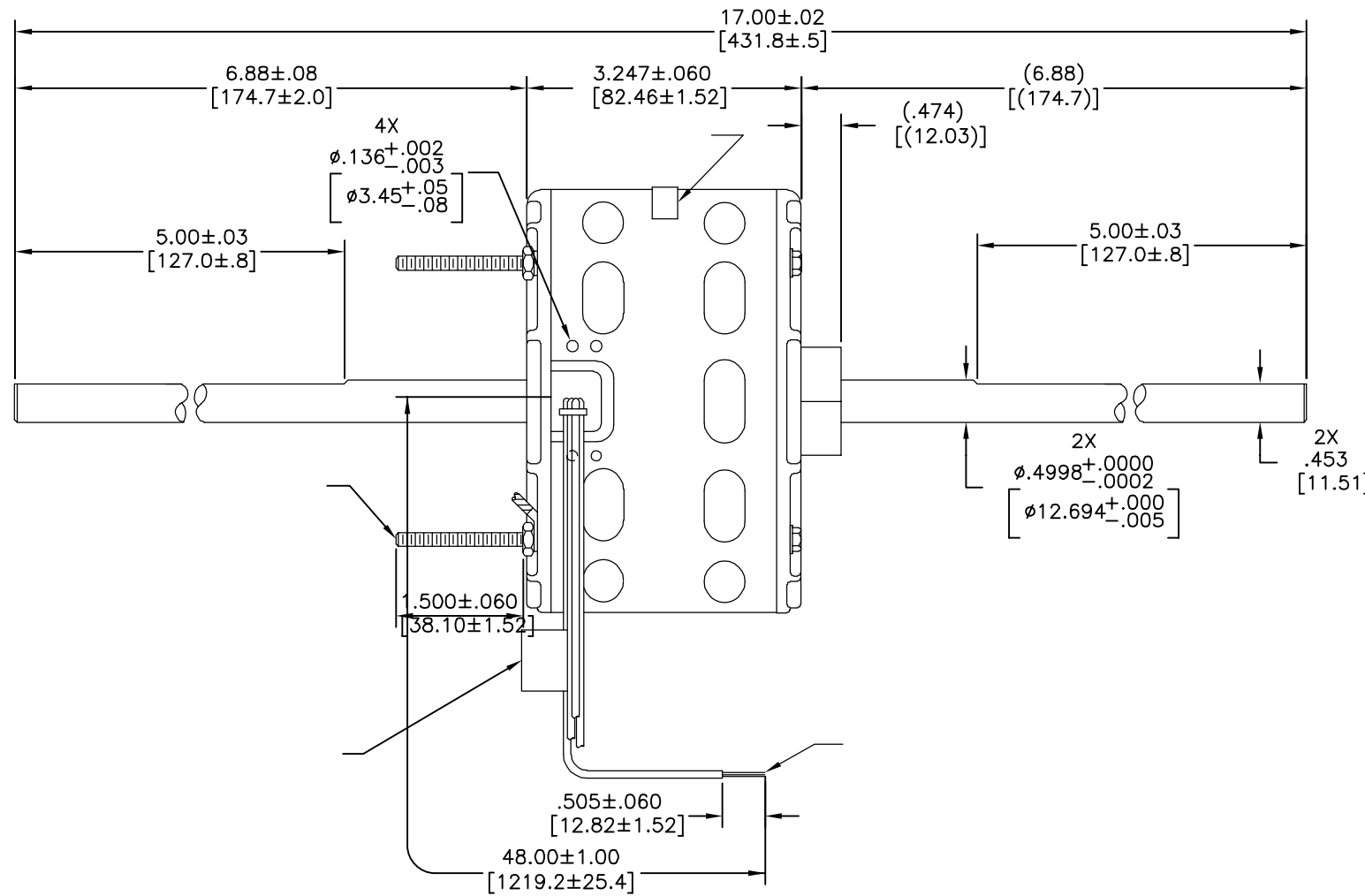
4

3

2

1

版本	ECO	编制	日期	批准	日期
G	0029019	I.ORTIZ	10-17-2012	M.AVILA	10-17-2012



ROT.: - CCWLE



Tipp City, OH
THERMALLY PROTECTED



SER. DATE & PO# PLT LTR MOD DA2D051N# []
 VOLTS 115 HZ 60 AMPS
 RPM 1550 SP3 PH CAP
 INS CL AAMB 40C HP 1/12
 BRG SLV BK HI 3.2A 1/12HP BU MED 1.8A 1/20HP
 RD LOW 1.3A 1/30HP WH COM
 ← ROTATION →
 ASSEMBLED IN MEXICO

63T7433-210

- 形位公差
- 平面度
- 直线度
- ∠ 倾斜度
- ⊥ 垂直度
- // 平行度
- 圆度
- ⊘ 圆柱度
- △ 面轮廓度
- ∩ 线轮廓度
- ↻ 圆跳动
- ⊕ 位置度
- ◎ 同轴度
- ≡ 对称度

ASME Y14.5M 1994

除另有注明
尺寸公差如下:
 英寸 X XX XXX XXXX
 ±.1 ±.02 ±.005 ±.0005
 毫米 ±0.5 ±0.13 ±0.013
 角度 ±.50 度
 清理毛刺和尖棱
 英寸 .003-.015 毫米 0.1-0.4
 内圆角
 英寸 .020 毫米 0.5
 表面粗糙度
 英制 125 米制 3.2
 米制尺寸显示在 []

绘图:

批准:

第三角投影
 机密: 本图纸及相关信息所有权归REGAL-BELOIT CORPORATION
 未经REGAL-BELOIT CORPORATION书面授权, 不得泄露、
 复制、传播或作其他用途。—版权所有

REGAL REGAL-BELOIT CORPORATION

名称
**MODEL-RFHP-42FR
 OUTLINE**
 图幅 C 图号
DA2D7051
 比例 NONE 页号 1