

PRODUCT INFORMATION PACKET



Model No: 346

Catalog No: 346

Fan and Blower Motor, 1/8, 1/10 HP, 1 Ph, 60 Hz, 115 V, 1050 RPM, 2 Speed, 42 Frame, OAO



Regal and Century are trademarks of Regal Rexnord Corporation or one of its affiliated companies.

©2022 Regal Rexnord Corporation, All Rights Reserved. MC017097E





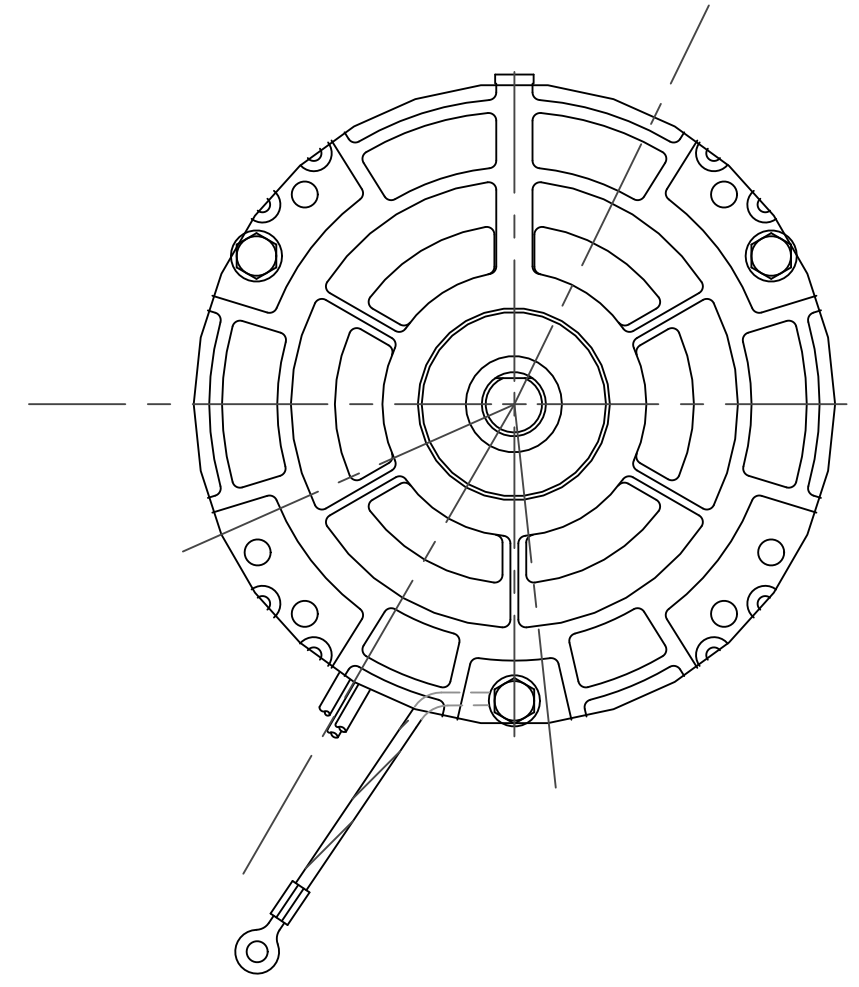
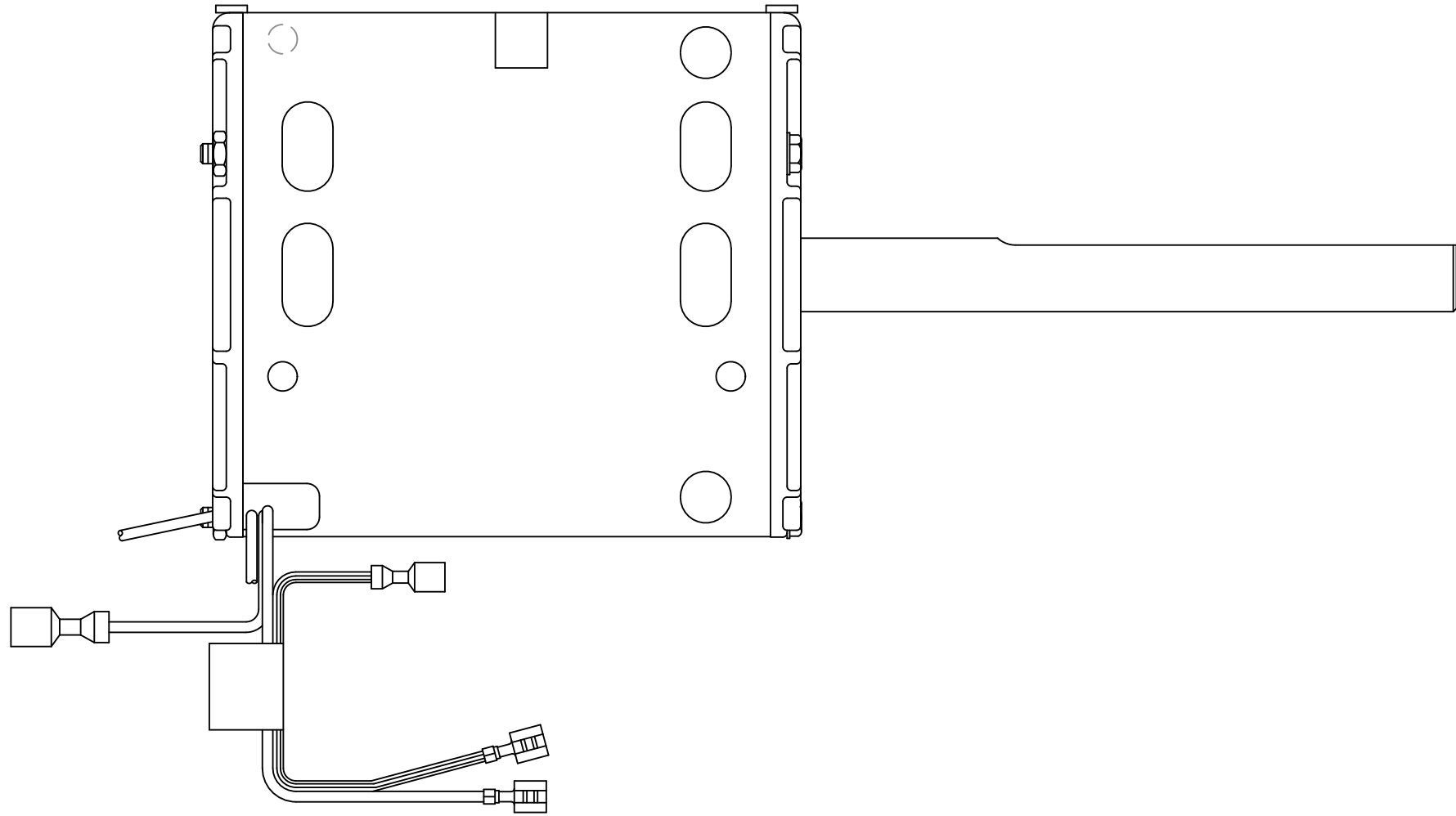
Nameplate Specifications

Output HP	1/8, 1/10 Hp	Output KW	0.10 kW
Frequency	60 Hz	Voltage	115 V
Current	4.8 A	Speed	1050 rpm
Service Factor	1	Phase	1
Duty	Continuous Air Over	Insulation Class	A
Frame	42	Enclosure	Open Air Over
Thermal Protection	Automatic	Ambient Temperature	40 °C
UL	Recognized	CSA	Y
CE	N	Number of Speeds	2

Technical Specifications

Electrical Type	Shaded Pole	Starting Method	Across The Line
Poles	6	Rotation	Clockwise Shaft End
Mounting	Round	Motor Orientation	Horizontal
Drive End Bearing	Sleeve	Opp Drive End Bearing	Sleeve
Frame Material	Rolled Steel	Shaft Type	Flat
Overall Length	8.46 in	Frame Length	3.42 in
Shaft Diameter	0.500 in	Shaft Extension	4.46 in
Outline Drawing	DA3E7224-S01		

This is an uncontrolled document once printed or downloaded and is subject to change without notice. Date Created:11/29/2022



CUSTOMER IS SOLELY RESPONSIBLE FOR MOTOR PERFORMANCE AND SUITABILITY IN APPLICATIONS FOR CUSTOMER'S USES.

ENDPLAY .005[.13] MIN. - .040[1.02] MAX.
 MAX. SHAFT RUN OUT .001[.03] PER INCH
 MAX. RUN OUT NOT TO EXCEED .010[.25]

D

D

C

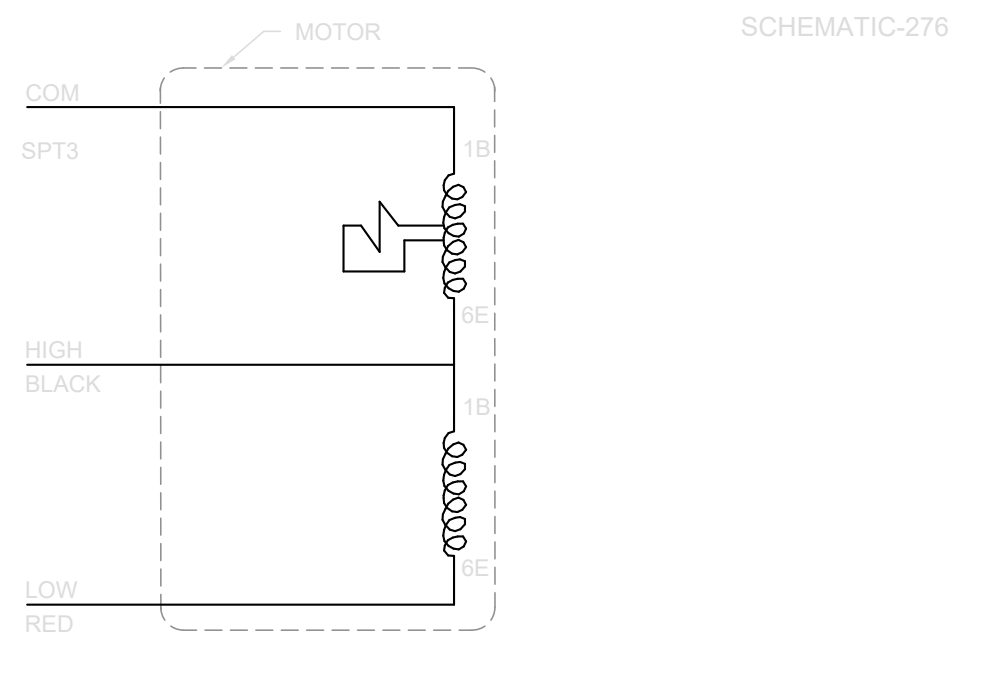
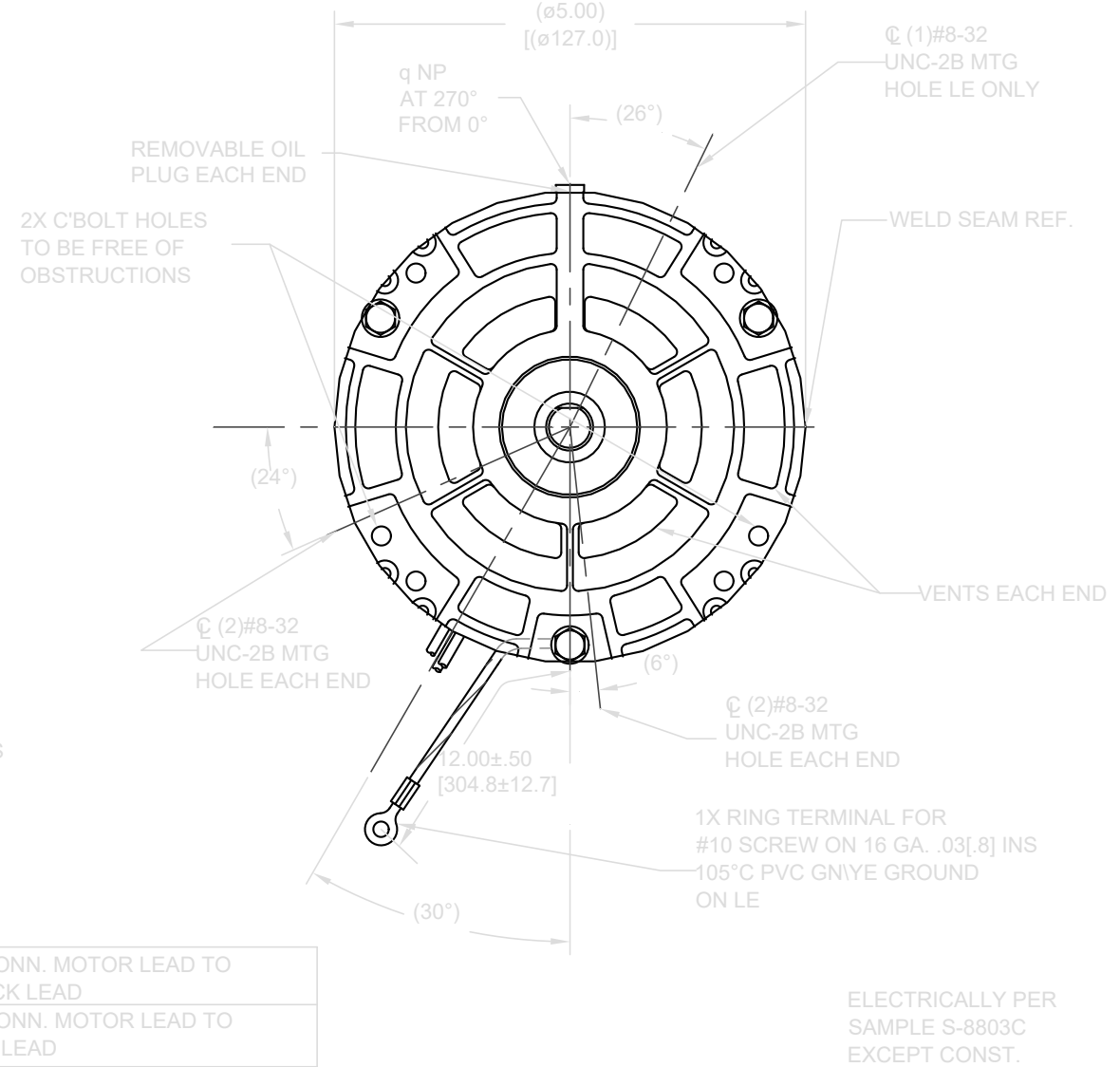
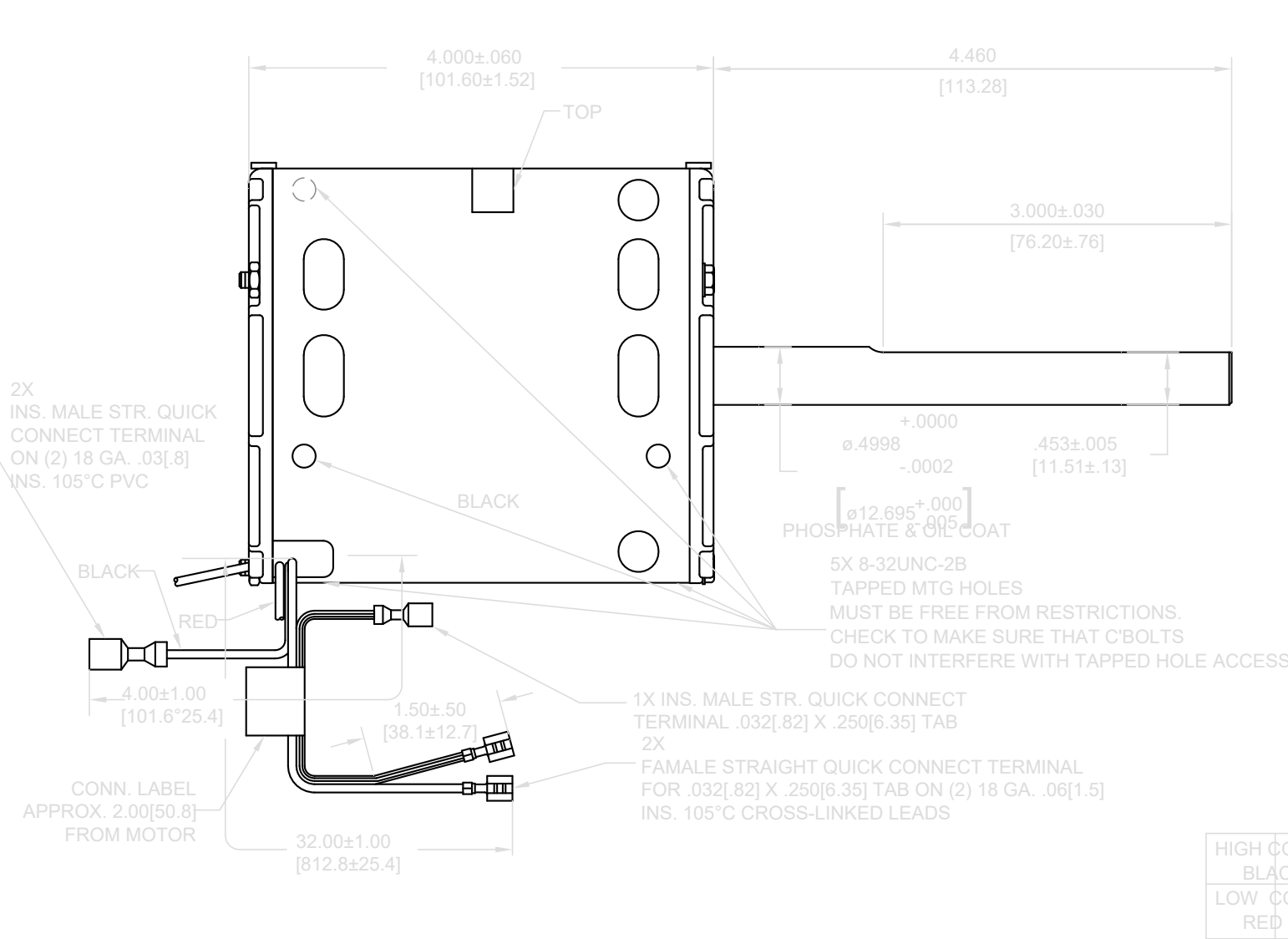
C

B

B

A

A



ROT.- CCWLE-CWSE

NAMEPLATE DATA:

Century Tipp City, OH THERMALLY PROTECTED

SER. DATE & P0# PLTRMOD DA3E224N# STK NO. 346

VOLTS 115 HZ AMPS 60 4.8

RPM1050 SP PH CAP 1

INS CL AMB °C HP 1/10 CONT AO ← ROTATION →

BRG SLV HIGH 4.8A 1/8HP

LOW 3.3A 1/10HP

ASSEMBLED IN MEXICO

CONNECTION LABEL 63T283-49

DRAWING REVISION K	REVISION BY D. VALENCIANO	DATE 04-21-2021	TOLERANCES UNLESS OTHERWISE SPECIFIED DEC. INCH mm ANGLE	DRAWN BY: DLC	REGAL™ Regal Beloit America, Inc.
ECR-0208934	APPROVED BY M. ARGUELLES	DATE 04-21-2021	3X ±0.1 [±2.5] ±0.5° XX ±0.02 [±0.51] XXX ±0.005 [±0.127] XXXX ±0.0005 [±0.0127]	DATE: 11-23-1999	
ECO DESCRIPTION SEE ECR			REMOVE BURRS & BREAK SHARP EDGES .003/015 [076/381] X 45° CORNER FILLETS R.02 [.51] MACHINED SURFACES	APPROVED BY: TLB	DESCRIPTION MODEL-RFHP-42FR
COPYRIGHT REGAL BELOIT AMERICA, INC. ALL RIGHTS RESERVED. PROPRIETARY AND CONFIDENTIAL INFORMATION - THIS DOCUMENT IS THE PROPERTY OF REGAL BELOIT AMERICA, INC. FORMERLY AND CONTAINS OWNERS PROPRIETARY INFORMATION. ANY PERSON, CORPORATION OR OTHER FIRM RECEIVING IT IS DEEMED BY RECEIVING IT TO AGREE THAT IT, AND/OR ANY PART OF IT, SHALL NOT BE DISCLOSED TO ANY PERSON, CORPORATION OR OTHER ENTITY, DUPLICATED, AND/OR USED, EXCEPT AS EXPRESSLY APPROVED IN WRITING IN ADVANCE BY OWNER. THIS DOCUMENT SHALL BE RETURNED TO OWNER UPON REQUEST. IT MAY BE SUBJECT TO CERTAIN RESTRICTIONS UNDER APPLICABLE EXPORT CONTROL LAWS AND REGULATIONS.			INCH mm mm SHOWN IN [BRACKETS]	DATE: 11-23-1999	OUTLINE
			THIRD ANGLE PROJECTION	REFERENCE	MATERIAL
			SIZE DWG NO C DA3E7224	PROCESS/FINISH	SHEET 1