

PRODUCT INFORMATION PACKET



Model No: 349

Catalog No: 349

OEM Replacement Motor, 1/125 HP, 1 Ph, 60 Hz, 115 V, 3000 RPM, 1 Speed, 3.3" Diameter, OAO



Regal and Century are trademarks of Regal Rexnord Corporation or one of its affiliated companies.
©2022 Regal Rexnord Corporation, All Rights Reserved. MC017097E





Nameplate Specifications

Output HP	1/125 Hp	Output KW	0.01 kW
Frequency	60 Hz	Voltage	115 V
Current	.46 A	Speed	3000 rpm
Service Factor	1	Phase	1
Duty	Continuous Air Over	Insulation Class	A
Frame	3.3	Enclosure	Open Air Over
Thermal Protection	Impedance	Ambient Temperature	40 °C
UL	Recognized	CSA	N
CE	N	Number of Speeds	1

Technical Specifications

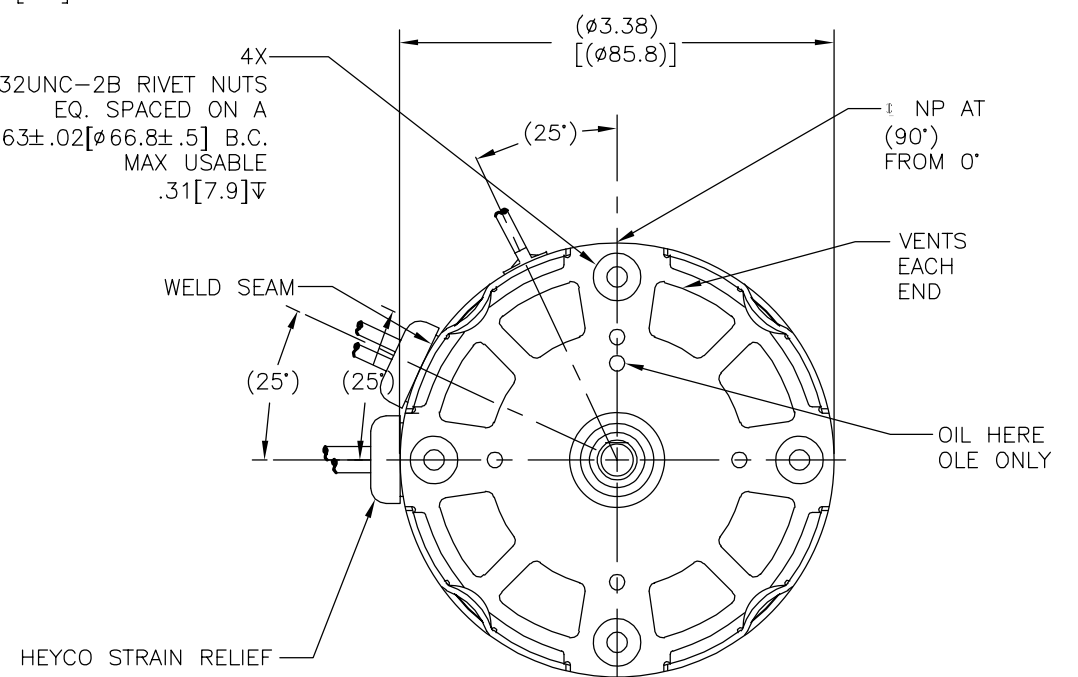
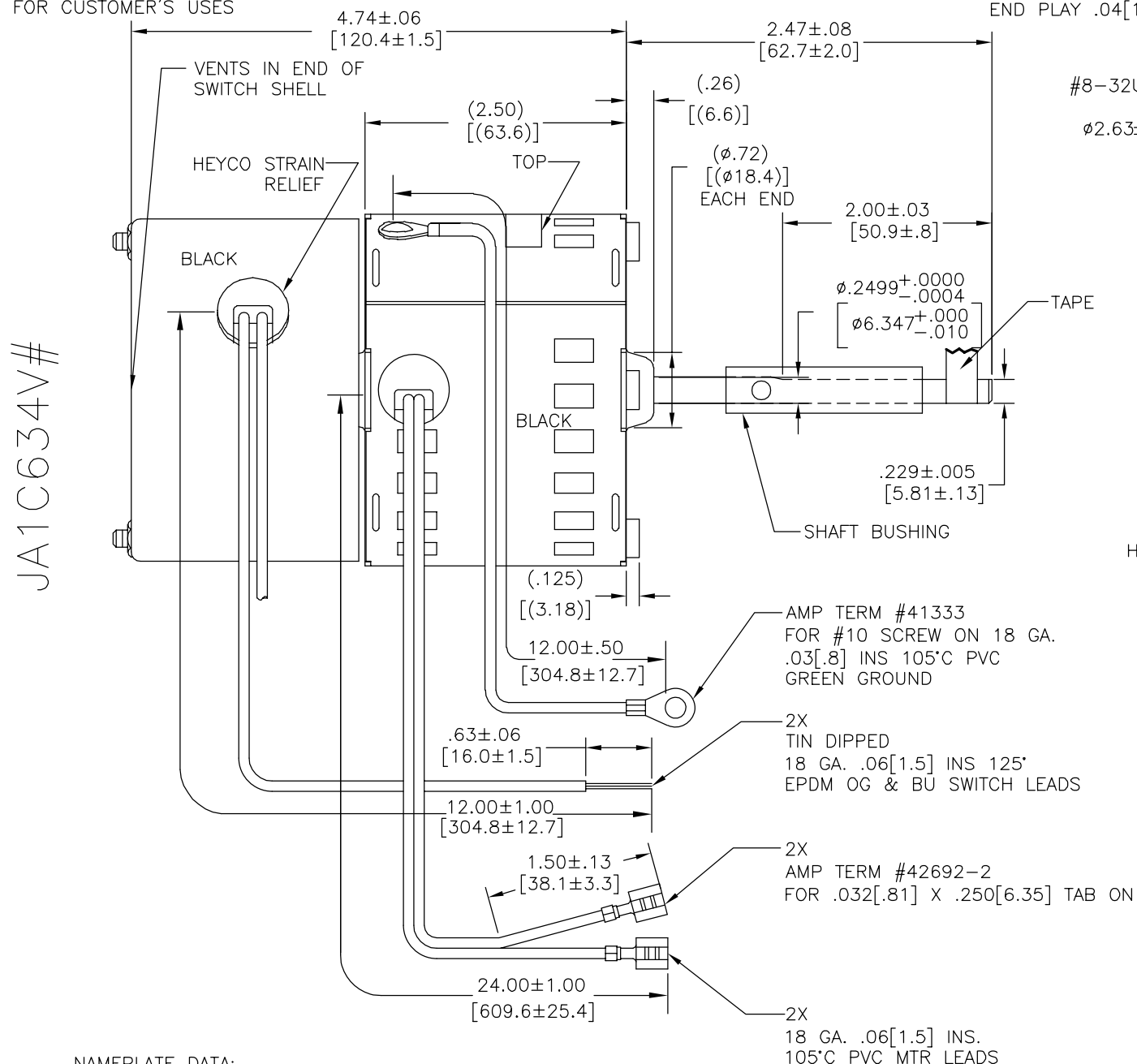
Electrical Type	Shaded Pole	Starting Method	Across The Line
Poles	2	Rotation	Clockwise Shaft End
Mounting	Extended Studs	Drive End Bearing	Sleeve
Opp Drive End Bearing	Sleeve	Frame Material	Rolled Steel
Shaft Type	Flat	Frame Length	4.74 in
Shaft Diameter	0.250 in	Shaft Extension	2 1/2 in
Outline Drawing	JA1C634-S01		

This is an uncontrolled document once printed or downloaded and is subject to change without notice. Date Created:11/29/2022

4 3 2 1

CUSTOMER IS SOLELY RESPONSIBLE FOR MOTOR PERFORMANCE AND SUITABILITY IN APPLICATION FOR CUSTOMER'S USES

REV	ECO	REV BY	DATE	APPD	DATE
CB	0035537	P.ROJAS	07-16-2013	S.JIMENEZ	07-16-2013



COLOR CODE	
BLUE	SWITCH
ORANGE	SWITCH
BLACK	MOTOR
BLACK	MOTOR

ELECTRICALLY PER SAMPLE S-5981B EXCEPT CONST.

CCWLE-CWSE

NAMEPLATE DATA:



Tipp City, OH
 IMPEDANCE PROTECTED
 SER.DATE, PLT MOD JA1C634V#
 115V 60HZ .46A 3000RPM 1/125HP 1PH CONT AO
 ← ROTATION → BK-MOTOR OG-SWITCH BU-SWITCH
 ASSEMBLED IN MEXICO STOCK NO. 349

REPLACES AA1C155#

AFTERMARKET
 STOCK NO 349

GEOMETRIC CHARACTERISTICS & SYMBOLS
□ FLATNESS
- STRAIGHTNESS
< ANGLARITY
⊥ PERPENDICULARITY (SQUARENESS)
// PARALLELISM
○ ROUNDNESS (CIRCULARITY)
∅ CYLINDRICITY
△ PROFILE OF ANY SURFACE
∩ PROFILE OF ANY LINE
∩ RUNOUT
⊕ TRUE POSITION
◎ CONCENTRICITY
= SYMMETRY

ASME Y14.5M 1994

UNLESS OTHERWISE SPECIFIED DIM. TOLERANCES ARE AS FOLLOWS:

INCH	±.1	±.02	±.005	±.0005
mm	±0.5	±0.13	±0.013	

ANG. ±.50 DEG
 REMOVE BURRS & BREAK SHARP EDGES:
 INCH .003-.015 mm 0.1-0.4
 CORNER FILLETS TO:
 INCH .020 mm 0.5
 MACHINE SURFACES:
 INCH 125 mm 3.2

METRIC DIMS. SHOWN IN [BRACKETS]

DR BY: WJC
 APPD:
 THIRD ANGLE PROJECTION
 EDS DATE 11-11-2011
 FORMAT REV H
 CONFIDENTIAL: THIS DRAWING AND ITS INFORMATION ARE THE EXCLUSIVE AND CONFIDENTIAL PROPERTY OF REGAL-BELOIT CORPORATION AND ARE NOT TO BE DISCLOSED, DUPLICATED, DISTRIBUTED OR OTHERWISE USED WITHOUT THE WRITTEN CONSENT OF REGAL-BELOIT CORPORATION. -ALL RIGHTS RESERVED.

REGAL REGAL-BELOIT CORPORATION	
DESCRIPTION MODEL-SFHP-3.3 OUTLINE	
SIZE C	DWG NO JA1C634
SCALE NONE	SHEET 1

JA1C634V#

JA1C634V#

A

A

4

3

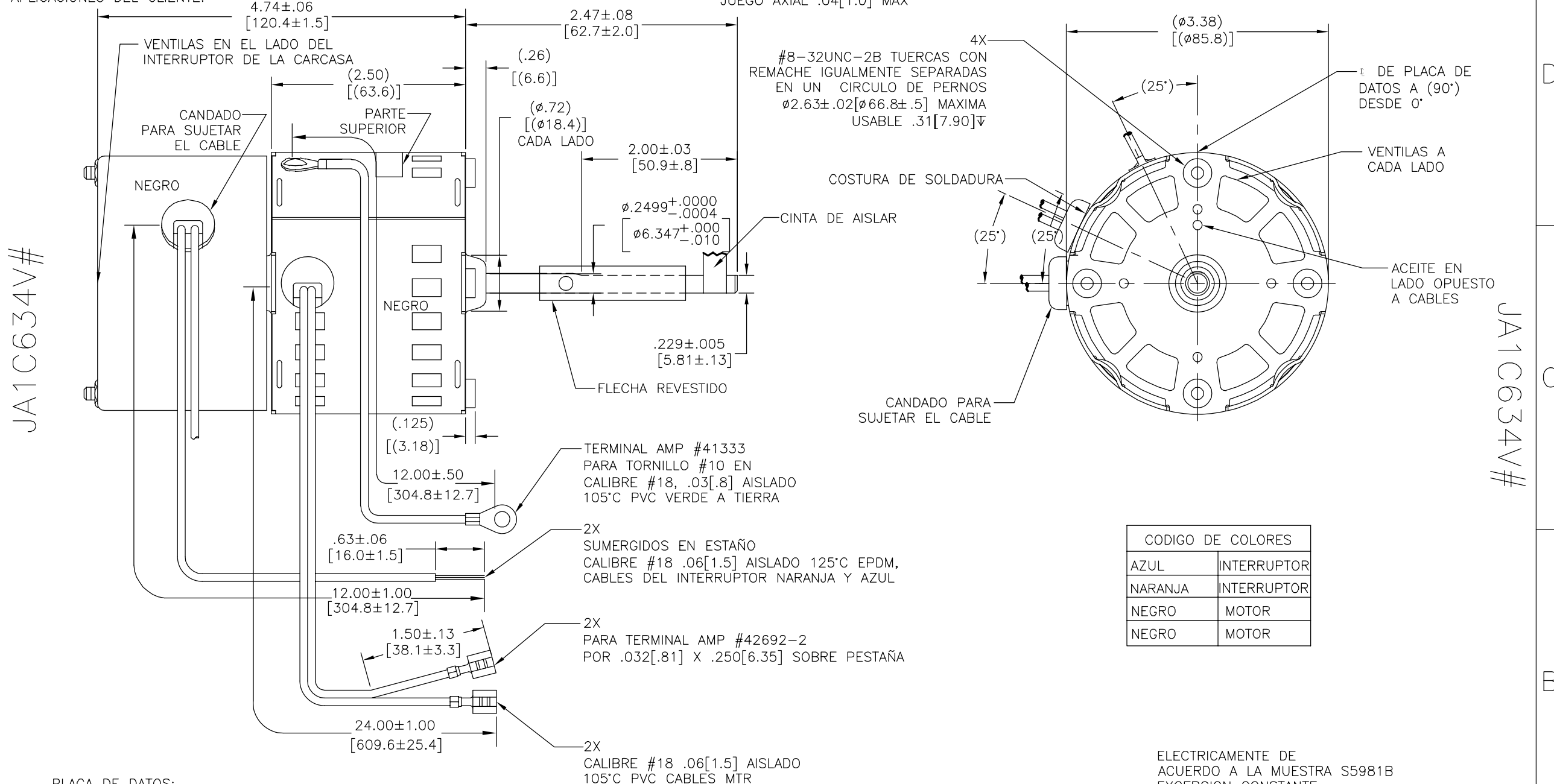
2

1

EL CLIENTE ES COMPLETAMENTE RESPONSABLE DEL FUNCIONAMIENTO DEL MOTOR Y USO ADECUADO EN APLICACIONES DEL CLIENTE.

REVISION:	ECO	REVISADO POR:	FECHA:	APROBADO POR:	FECHA:
CB	0035537	P.ROJAS	07-16-2013	S.JIMENEZ	07-16-2013

JUEGO AXIAL .04[1.0] MAX



PLACA DE DATOS:



IMPEDANCE PROTECTED

Tipp City, OH

SER.DATE, PLT MOD JA1C634V#
 115V 60HZ .46A 3000RPM 1/125HP 1PH CONT AO
 ←ROTATION→ BK-MOTOR OG-SWITCH BU-SWITCH
 ASSEMBLED IN MEXICO STOCK NO. 349

REEMPLAZAR AA1C155#

ELECTRICAMENTE DE ACUERDO A LA MUESTRA S5981B EXCEPCION CONSTANTE

CCWLE-CWSE

CARACTERISTICAS DE GEOMETRIA Y SIMBOLOS	
□	PLANICIDAD
-	RECTITUD
∠	ANGULARIDAD
⊥	PERPENDICULARIDAD (A ESCUADRA)
//	PARALELISMO
○	REDONDEZ (CIRCULARIDAD)
∅	CILINDRICIDAD
△	PERFIL DE CUALQUIER SUPERFICIE
∧	PERFIL DE CUALQUIER LINEA
∇	VARIACION
⊕	POSICION REAL
⊙	CONCENTRICIDAD
≡	SIMETRIA

A MENOS QUE SE ESPECIFIQUE DE OTRA MANERA, LAS TOLERANCIAS DE LAS DIMS; SON LAS SIGUIENTES:	
PULG	±.1 ±.02 ±.005 ±.0005
mm	±0.5 ±0.13 ±0.013
ANG	±.50 GRADOS
ELIMINAR REBABAS Y ORILLAS FILOSAS DEL BORDE.	
PULG	.003-.015 mm 0.1-0.4
FILETEAR ESQUINA:	PULG .020 mm 0.5
MAQUINAR SUPERFICIES	PULG 125 mm 3.2
DIMES METRICAS MOSTRADAS [PARENTESIS]	

DIBUJADO POR:	WJC
APROBADO POR:	
TERCER ANGULO DE PROYECCION	⊕
FECHA EDS:	11-11-2011
REV. FORMATO:	H
CONFIDENCIAL: ESTE DIBUJO Y SU INFORMACION SON PROPIEDAD DE USO EXCLUSIVO Y CONFIDENCIAL DE REGAL-BELOIT CORPORATION. Y NO DEBERAN SER REVELADOS, DUPLICADOS, DISTRIBUIDOS O USARSE DE OTRA MANERA SIN EL CONSENTIMIENTO ESCRITO DE REGAL-BELOIT CORPORATION. -TODOS LOS DERECHOS RESERVADOS.	

REGAL REGAL-BELOIT CORPORATION	
DESCRIPCION: MODEL-SFHP-3.3 OUTLINE	
TAMAÑO: C	NUMERO DE DIBUJO: JA1C634
ESCALA: NONE	HOJA: 1