

# PRODUCT INFORMATION PACKET



Model No: 418  
Catalog No: 418  
1/15 HP Refrigeration Motor, 3000 RPM, 115/230 Volts, 3.3" Diameter, TEFC  
Refrigeration Motors



Regal and Century are trademarks of Regal Rexnord Corporation or one of its affiliated companies.  
©2021 Regal Rexnord Corporation, All Rights Reserved. MC017097E





**Nameplate Specifications**

Output HP	1/15 Hp	Output KW	0.05 kW
Frequency	60 Hz	Voltage	115/230 V
Current	2.0/1.0 A	Speed	3000 rpm
Service Factor	1	Phase	1
Duty	Continuous Air Over	Insulation Class	A
Frame	3.3	Enclosure	Totally Enclosed Fan Cooled
Thermal Protection	Thermally Protected	Ambient Temperature	40 °C
UL	Recognized	CSA	Y
CE	N	Number of Speeds	1

**Technical Specifications**

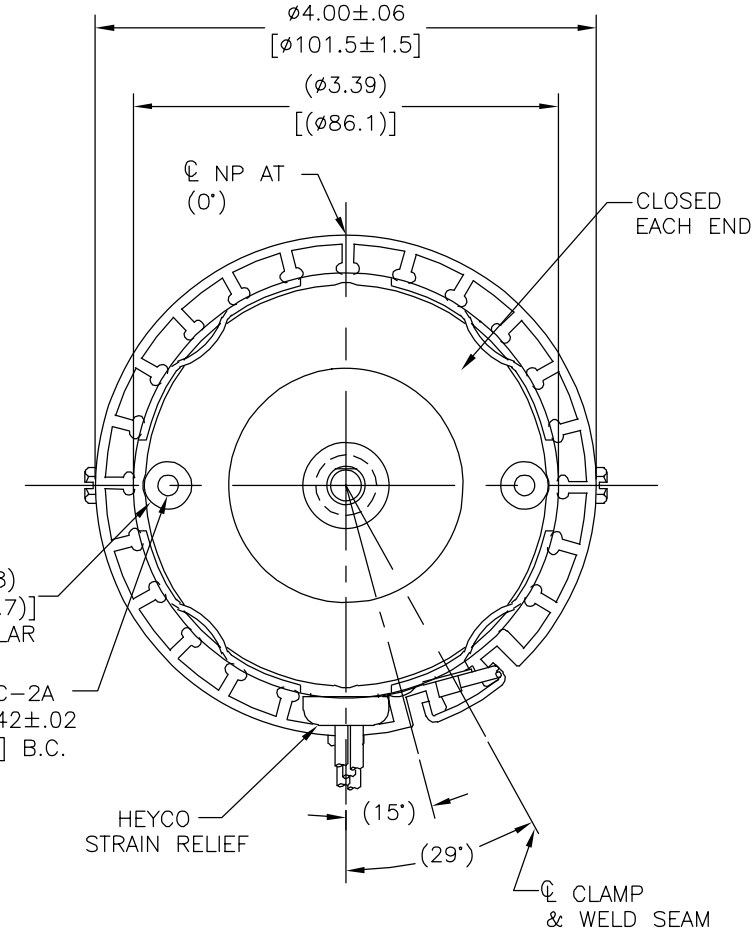
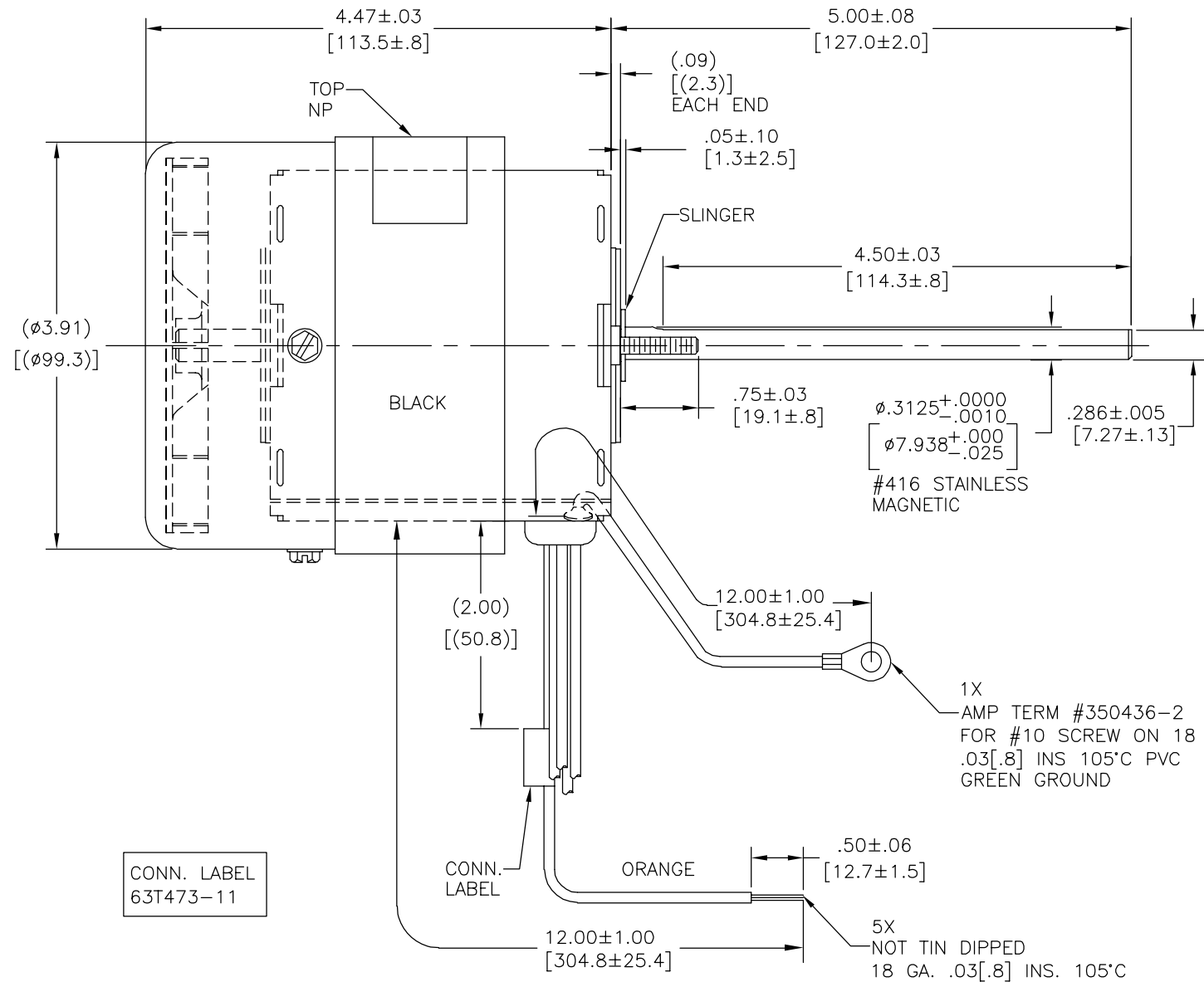
Electrical Type	Shaded Pole	Starting Method	Across The Line
Poles	2	Rotation	Counterclockwise Shaft End
Mounting	Extended Studs	Drive End Bearing	Ball
Opp Drive End Bearing	Ball	Frame Material	Rolled Steel
Shaft Type	Flat	Shaft Diameter	0.312 in
Shaft Extension	5 in		
Outline Drawing	JB1R050-S01		

This is an uncontrolled document once printed or downloaded and is subject to change without notice. Date Created:10/12/2021

REV	ECO	REV BY	DATE	APPD	DATE
AN	0027415	F. MORENO	07-13-2012	G. ALVIDREZ	07-13-2012

CUSTOMER IS SOLELY RESPONSIBLE FOR MOTOR PERFORMANCE AND SUITABILITY IN APPLICATIONS FOR CUSTOMER'S USES.

BEARING PRELOAD OLE



NAMEPLATE DATA:

THERMALLY PROTECTED Tipp City, OH  
 SER. DATE PLT MOD JB1R050N#  
 115/230V 60HZ 2.0/1.0A 3000RPM 1/15HP 1PH  
 BALL BEARINGS A.O. ASSEMBLED IN MEXICO  
 STOCK NO. 418 ROTATION →

ELECTRICALLY PER SAMPLE S-6345D EXCEPT CONST. & ROTATION

CCWLE-CCWSE

	COLOR CODE
230V	BK INS., BU & RD TOGETHER INS. OG & YE TO LINE
115V	RD & BK TOGETHER, BU & YE TO LINE, OG TO LINE

GEOMETRIC CHARACTERISTICS & SYMBOLS  
 ▭ FLATNESS  
 - STRAIGHTNESS  
 <math>\sphericalangle</math> ANGULARITY  
 ⊥ PERPENDICULARITY (SQUARENESS)  
 // PARALLELISM  
 ○ ROUNDNESS (CIRCULARITY)  
 ⌀ CYLINDRICITY  
 △ PROFILE OF ANY SURFACE  
 ▽ PROFILE OF ANY LINE  
 ↗ RUNOUT  
 ⊕ TRUE POSITION  
 ⊙ CONCENTRICITY  
 ≡ SYMMETRY  
 ASME Y14.5M 1994

UNLESS OTHERWISE SPECIFIED DIM. TOLERANCES ARE AS FOLLOWS:  
 INCH X XX XXX XXXX  
 mm ±0.5 ±0.13 ±0.013  
 ANG. ±.50 DEG  
 REMOVE BURRS & BREAK SHARP EDGES:  
 INCH .003-.015 mm 0.1-0.4  
 CORNER FILLETS TO:  
 INCH .020 mm 0.5  
 MACHINE SURFACES:  
 INCH 125 mm 3.2  
 METRIC DIMS. SHOWN IN [BRACKETS]

DR BY:  
 APPD:  
 THIRD ANGLE PROJECTION  
 EDS DATE 11-11-2011  
 FORMAT REV H  
 CONFIDENTIAL: THIS DRAWING AND ITS INFORMATION ARE THE EXCLUSIVE AND CONFIDENTIAL PROPERTY OF REGAL-BELOIT CORPORATION AND ARE NOT TO BE DISCLOSED, DUPLICATED, DISTRIBUTED OR OTHERWISE USED WITHOUT THE WRITTEN CONSENT OF REGAL-BELOIT CORPORATION. -ALL RIGHTS RESERVED.

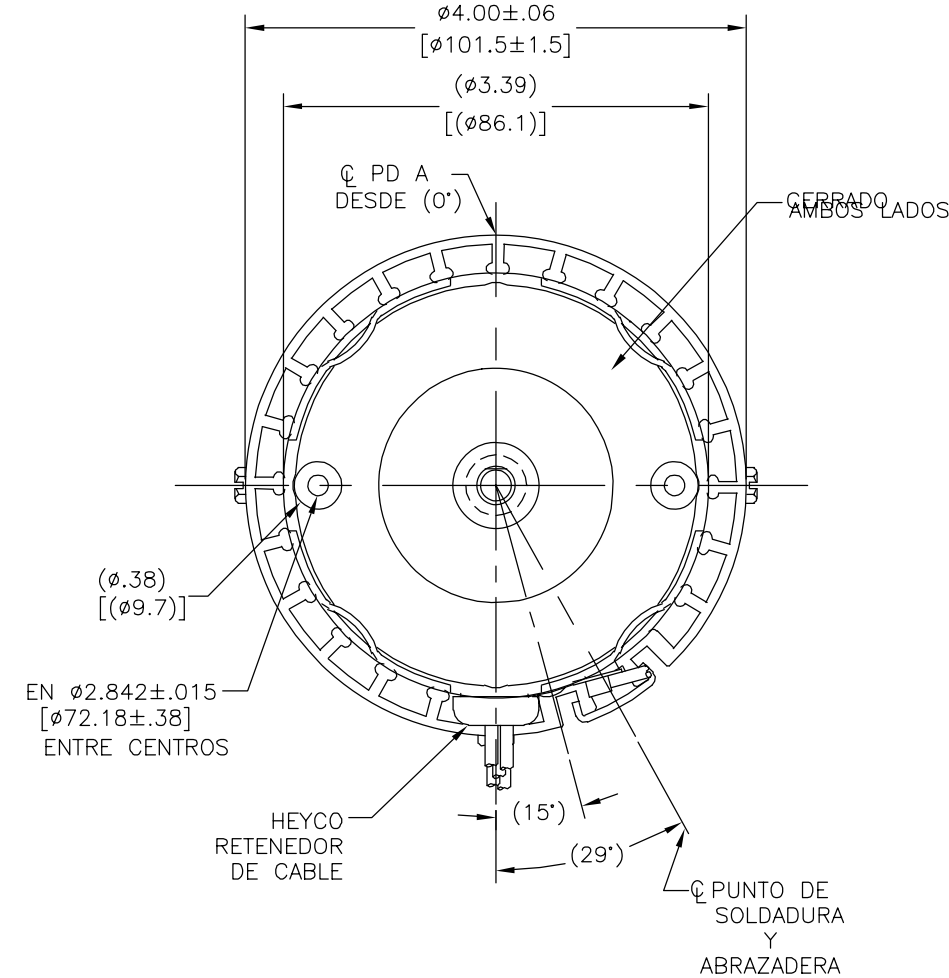
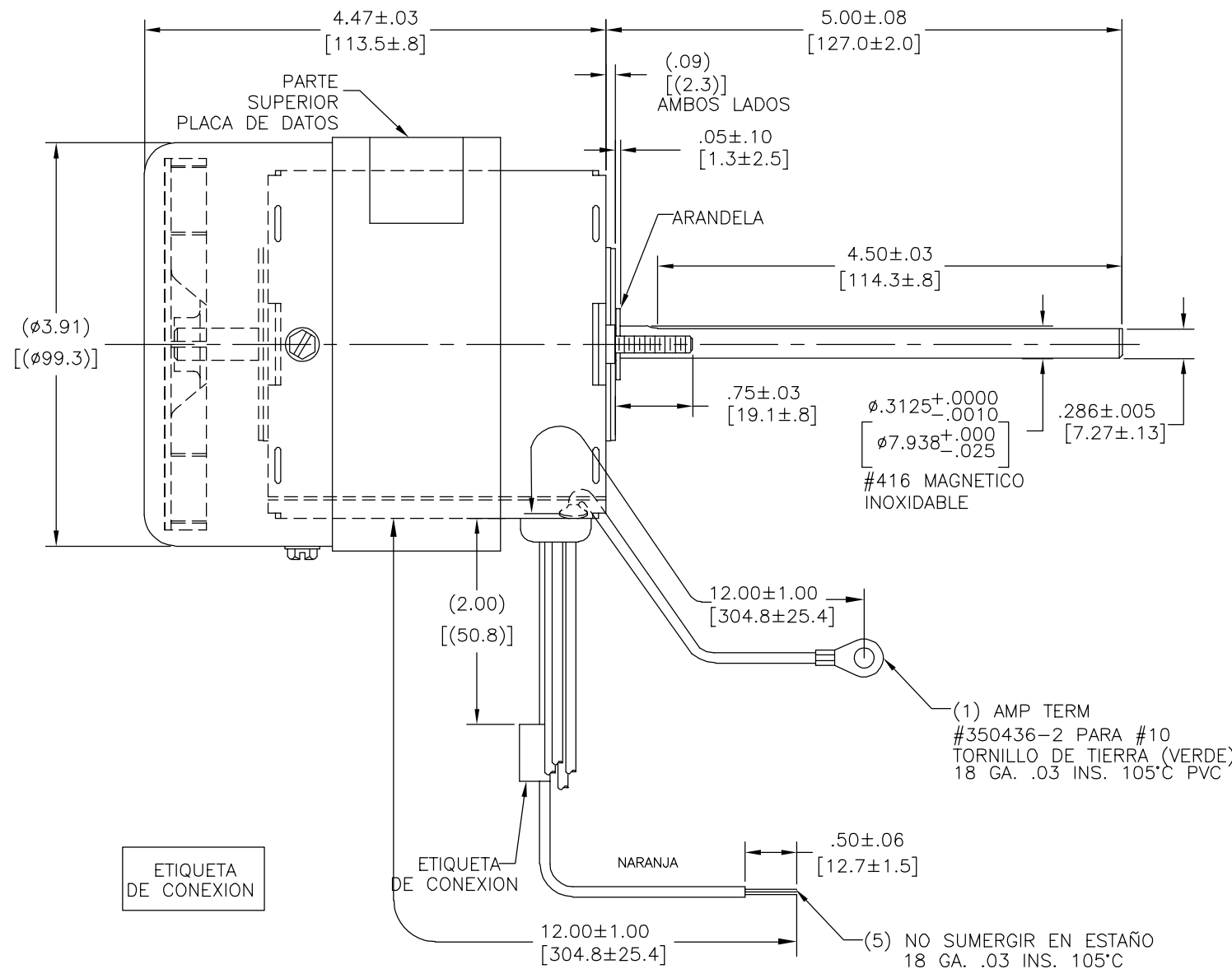
<b>REGAL-BELOIT CORPORATION</b>	
DESCRIPTION	
MODEL-SFHP-3.3 OUTLINE	
SIZE	DWG NO
C	JB1R050
SCALE	SHEET
NONE	1

AFTERMARKET

REVISION:	ECO	REVISADO POR:	FECHA:	APROBADO POR:	FECHA:
AN	0027415	F. MORENO	07-13-2012	G. ALVIDREZ	07-13-2012

EL CLIENTE ES SOLO RESPONSABLE DEL RENDIMIENTO DEL MOTOR Y APLICACIONES CONVENIENTES PARA LOS USOS DEL CLIENTE.

ARANDELA DE CARGA DEBE DE IR EN EL LADO OPUESTO DE LOS CABLES



ETIQUETA DE CONEXION

ETIQUETA DE CONEXION

NARANJA

ELECTRICAMENTE POR MUESTRA S-6457C EXCEPT ROT. Y VOLTAJE DOBLE CCWLE-CCWSE

CODIGO DE COLORES	
	NEGRO AISLADO Y ROJO JUNTOS AISLADO NARANJA Y AMARILLO HACIA LINEA
	ROJO Y NEGRO JUNTOS, AZUL Y AMARILLO HACIA LINEA, NARANJA HACIA LINEA

PLACA DE DATOS:

THERMALLY PROTECTED Tipp City, OH  
 SER.DATE PLT MOD JB1R050N#  
 115/230V 60HZ 2.0/1.0A 3000RPM 1/15HP 1PH  
 BALL BEARINGS A.O. ASSEMBLED IN MEXICO  
 STOCK NO. 418 ROTATION →

CARACTERISTICAS DE GEOMETRIA Y SIMBOLOS

- PLANICIDAD
- RECTITUD
- ∠ ANGULARIDAD
- ⊥ PERPENDICULARIDAD (A ESCUADRA)
- // PARALELISMO
- REDONDEZ (CIRCULARIDAD)
- ∅ CILINDRICIDAD
- △ PERFIL DE CUALQUIER SUPERFICIE
- ∧ PERFIL DE CUALQUIER LINEA
- ∩ VARIACION
- ⊕ POSICION REAL
- ◎ CONCENTRICIDAD
- = SIMETRIA

ASME Y14.5M 1994

A MENOS QUE SE ESPECIFIQUE DE OTRA MANERA, LAS TOLERANCIAS DE LAS DIMS; SON LAS SIGUIENTES:

PULG	±.1	±.02	±.005	±.0005
mm	±0.5	±0.13	±0.013	

ANG. ±50 GRADOS  
 ELIMINAR REBABAS Y ORILLAS FILOSAS DEL BORDE.  
 PULG .003-.015 mm 0.1-0.4  
 FILETEAR ESQUINA: PULG .020 mm 0.5  
 MAQUINAR SUPERFICIES  
 PULG 125 mm 3.2

DIMS METRICAS MOSTRADAS [PARENTESIS]

DIBUJADO POR:

APROBADO POR:

TERCER ANGULO DE PROYECCION

FECHA EDS: 11-11-2011

REV. FORMATO: H

CONFIDENCIAL: ESTE DIBUJO Y SU INFORMACION SON PROPIEDAD DE USO EXCLUSIVO Y CONFIDENCIAL DE REGAL-BELOIT CORPORATION. Y NO DEBERAN SER REVELADOS, DUPLICADOS, DISTRIBUIDOS O USARSE DE OTRA MANERA SIN EL CONSENTIMIENTO ESCRITO DE REGAL-BELOIT CORPORATION. -TODOS LOS DERECHOS RESERVADOS.

**REGAL REGAL-BELOIT CORPORATION**

DESCRIPCION: MODEL-SFHP-3.3 OUTLINE

TAMAÑO: C NUMERO DE DIBUJO: JB1R050

ESCALA: NONE HOJA: 1

4

3

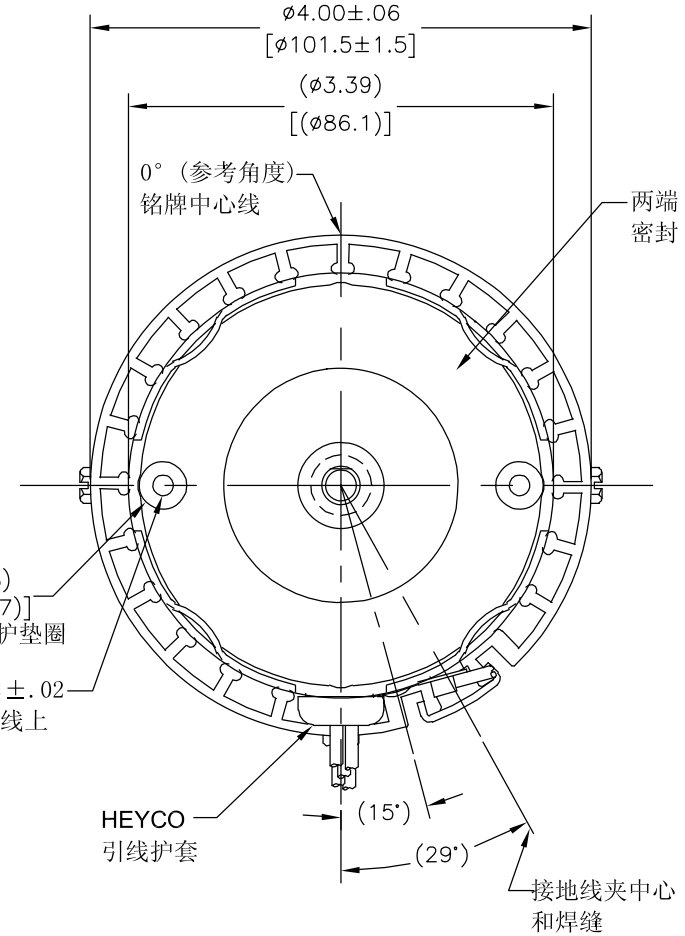
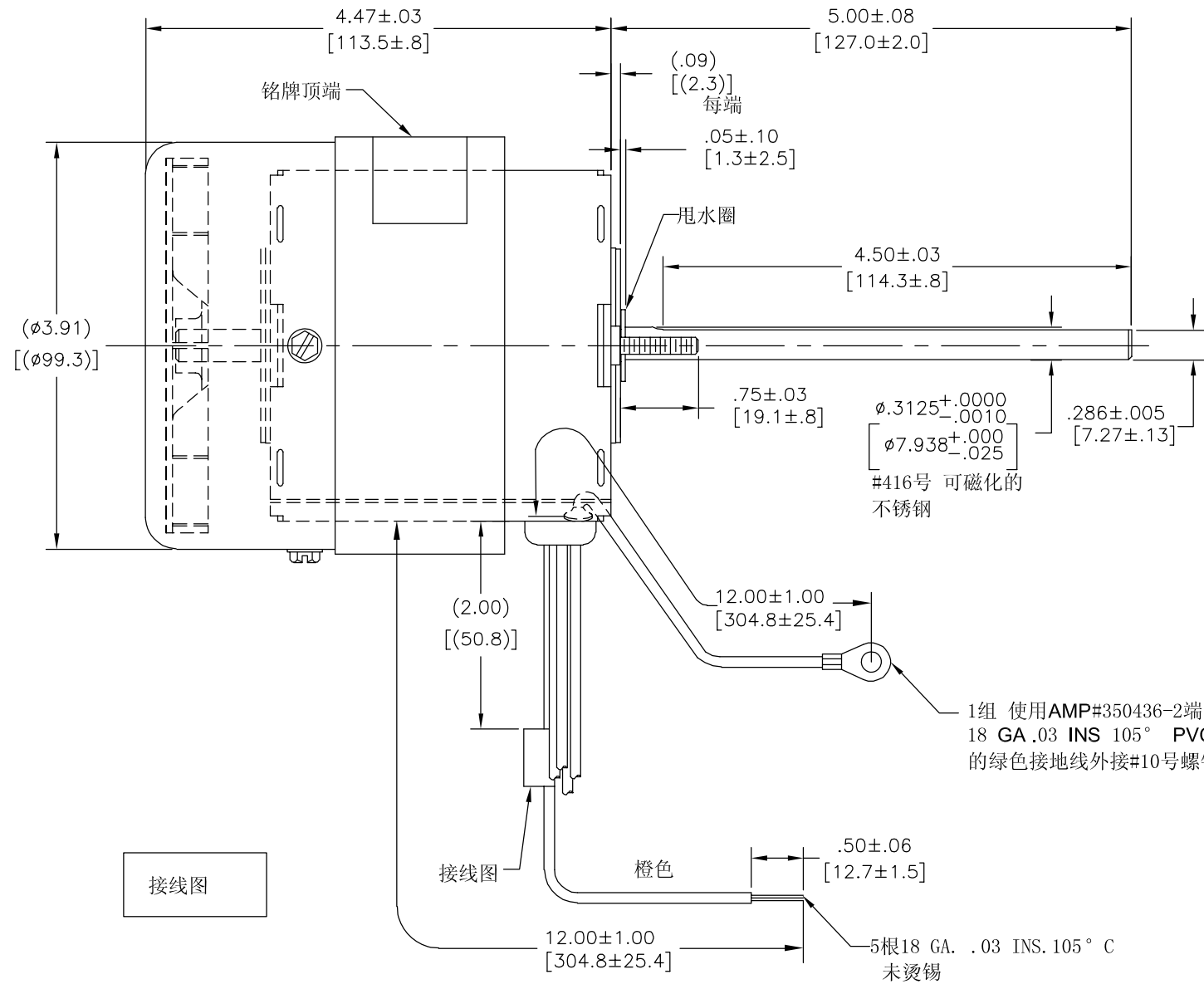
2

1

客户应独自对电机性能负责，  
且根据需要选择合适的电机

版本	ECO	编制	日期	批准	日期
AN	0027415	F. MORENO	07-13-2012	G. ALVIDREZ	07-13-2012

非引线端轴承需加预压力



接线图

除结构和转向外  
电气参数依照  
电机 S-6345D;  
引线段逆时针-轴端逆时针

颜色
黑线接绝缘护套，蓝色和红色连在一起接绝缘护套， 橙色和黄线接电源线
红线和黑线接一起，蓝和黄接电源线，橙色接电源线

铭牌数据:  
**Century** THERMALLY PROTECTED Tipp City, OH  
 SER.DATE PLT MOD JB1R050N#  
 115/230V 60HZ 2.0/1.0A 3000RPM 1/15HP 1PH  
 BALL BEARINGS A.O. ASSEMBLED IN MEXICO  
 STOCK NO. 418 ROTATION →

- 形位公差
- 平面度
- 直线度
- ∠ 倾斜度
- ⊥ 垂直度
- // 平行度
- 圆度
- ⊘ 圆柱度
- △ 面轮廓度
- ∑ 线轮廓度
- ↗ 圆跳动
- ⊕ 位置度
- ⊙ 同轴度
- ≡ 对称度

除另有注明  
尺寸公差如下:  
 英寸 X XX XXX XXXX  
 ±.1 ±.02 ±.005 ±.0005  
 毫米 ±0.5 ±0.13 ±0.013  
 角度 ±.50 度  
 清理毛刺和尖棱  
 英寸 .003-.015 毫米 0.1-0.4  
 内圆角  
 英寸 .020 毫米 0.5  
 表面粗糙度  
 英制 125 米制 3.2  
 米制尺寸显示在 [ ]

绘图:  
 批准:  
 第三角投影  
 机密: 本图纸及相关信息所有权归REGAL-BELOIT CORPORATION  
 未经REGAL-BELOIT CORPORATION书面授权, 不得泄露、  
 复制、传播或作其他用途。—版权所有

**REGAL REGAL-BELOIT CORPORATION**

名称: MODEL-SFHP-3.3  
OUTLINE

图幅: C 图号: JB1R050

比例: NONE 页号: 1

4

3

2

1