

PRODUCT INFORMATION PACKET



Model No: 5KCR48TN3084X

Catalog No: C1479

General Purpose Motor, 1,.33 HP, 1 Ph, 60 Hz, 208-230/190-220 V, 1800 RPM, 56H Frame, DP



Regal and LEESON are trademarks of Regal Rexnord Corporation or one of its affiliated companies.

©2025 Regal Rexnord Corporation, All Rights Reserved. MC017097E





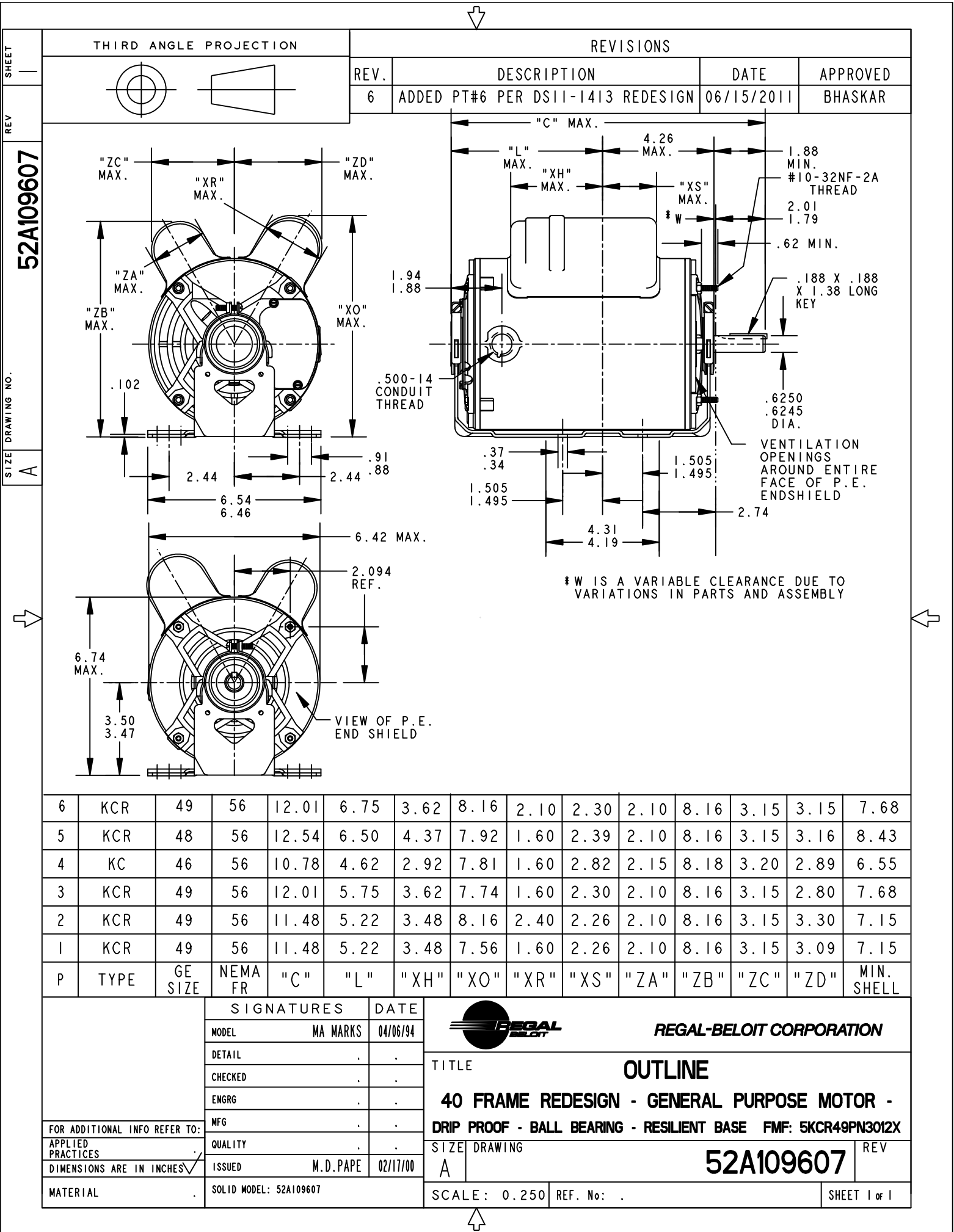
Nameplate Specifications

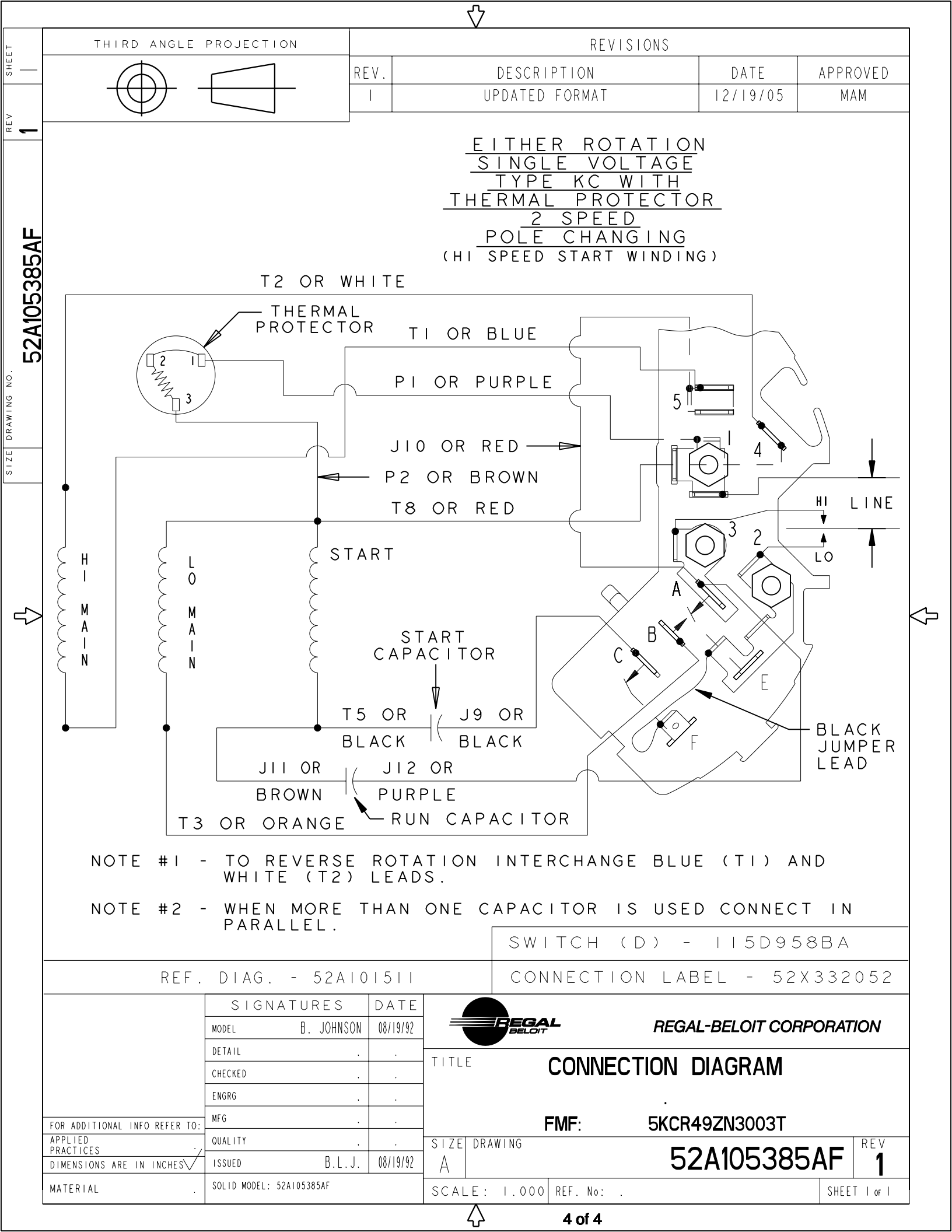
Phase	1	Output HP	1,.33 Hp
Output KW	0.75 kW	Voltage	208-230/190-220 V
Speed	1725,1140 rpm	Service Factor	1
Frame	56H	Enclosure	Drip Proof
Thermal Protection	Automatic	Efficiency	74 %
Ambient Temperature	50 °C	Frequency	60 Hz
Current	5.3-5.4,3.6-3.7 A	Power Factor	0
Duty	Continuous	Insulation Class	B
KVA Code	J	Drive End Bearing Size	6203
Opp Drive End Bearing Size	6203	UL	Recognized
CSA	Yes	CE	N
Number of Speeds	2		

Technical Specifications

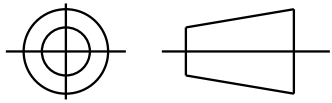
Electrical Type	Capacitor Start Capacitor Run	Starting Method	SM
Poles	4	Rotation	Counterclockwise/Clockwise
Mounting	Resilient Base	Motor Orientation	ANY
Drive End Bearing	BALL	Opp Drive End Bearing	BALL
Frame Material	Rolled Steel	Overall Length	12.54 in
Frame Length	8.43 in	Shaft Diameter	0.630 in
Shaft Extension	1.88 in		
Connection Drawing	52A105385AF	Outline Drawing	52A109607P5

This is an uncontrolled document once printed or downloaded and is subject to change without notice. Date Created:07/29/2025





THIRD ANGLE PROJECTION



REVISIONS

REV.	DESCRIPTION	DATE	APPROVED
1	UPDATED FORMAT	12/19/05	MAM

EITHER ROTATION
SINGLE VOLTAGE
TYPE KC WITH
THERMAL PROTECTOR
2 SPEED
POLE CHANGING
 (HI SPEED START WINDING)

T2 OR WHITE

THERMAL PROTECTOR

T1 OR BLUE

P1 OR PURPLE

J10 OR RED

P2 OR BROWN

T8 OR RED

START

START CAPACITOR

T5 OR BLACK

J9 OR BLACK

J11 OR BROWN

J12 OR PURPLE

T3 OR ORANGE

RUN CAPACITOR

BLACK JUMPER LEAD

HI LINE
 LO

NOTE #1 - TO REVERSE ROTATION INTERCHANGE BLUE (T1) AND WHITE (T2) LEADS.

NOTE #2 - WHEN MORE THAN ONE CAPACITOR IS USED CONNECT IN PARALLEL.

SWITCH (D) - 115D958BA

REF. DIAG. - 52A101511

CONNECTION LABEL - 52X332052

SIGNATURES

DATE

MODEL B. JOHNSON 08/19/92

DETAIL . . .

CHECKED . . .

ENGRG . . .

MFG . . .

FOR ADDITIONAL INFO REFER TO:

APPLIED PRACTICES QUALITY . . .

DIMENSIONS ARE IN INCHES ISSUED B.L.J. 08/19/92

MATERIAL SOLID MODEL: 52A105385AF



REGAL-BELOIT CORPORATION

TITLE CONNECTION DIAGRAM

FMF: 5KCR49ZN3003T

SIZE DRAWING A 52A105385AF REV 1

SCALE: 1.000 REF. No: SHEET 1 of 1