

PRODUCT INFORMATION PACKET



Model No: 5KCR49WN0270T

Catalog No: CG381

General Purpose Motor, 2 HP, 1 Ph, 60 Hz, 115/208-230 V, 56HZ Frame, DP



Regal and LEESON are trademarks of Regal Rexnord Corporation or one of its affiliated companies.
©2025 Regal Rexnord Corporation, All Rights Reserved. MC017097E





Nameplate Specifications

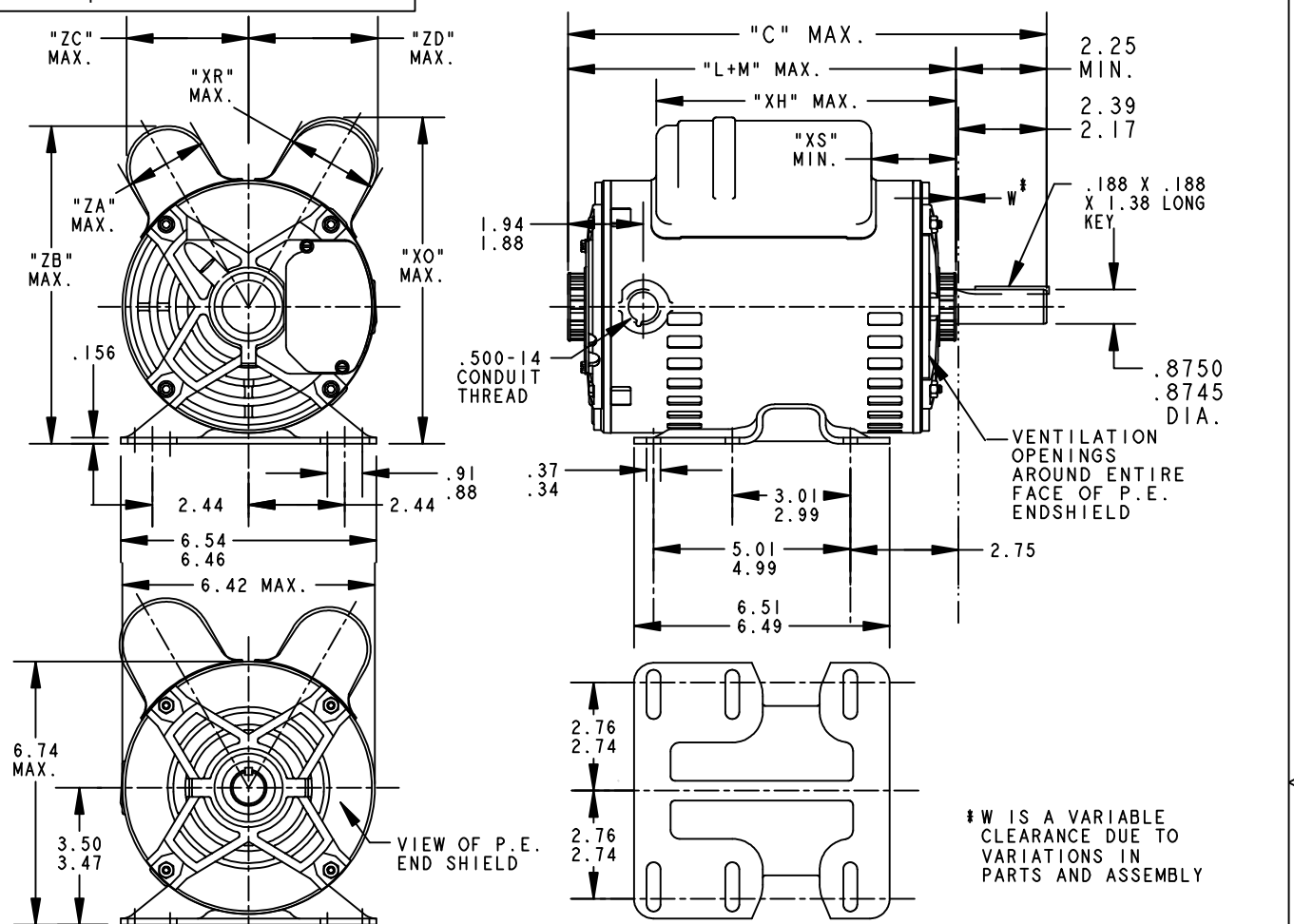
Phase	1	Output HP	2 Hp
Output KW	1.5 kW	Voltage	115/208-230 V
Speed	1725 rpm	Service Factor	1.15
Frame	56HZ	Enclosure	Drip Proof
Thermal Protection	Automatic	Ambient Temperature	40 °C
Frequency	60 Hz	Current	22.0/10.9-11.0 A
Power Factor	0	Duty	Continuous
Insulation Class	B	KVA Code	L
Drive End Bearing Size	6205	Opp Drive End Bearing Size	6203
UL	Recognized (Not Protector)	CSA	Y
CE	N		

Technical Specifications

Electrical Type	Capacitor Start Capacitor Run	Starting Method	Across The Line
Poles	4	Rotation	Selective Counterclockwise
Motor Orientation	Any	Drive End Bearing	Ball
Opp Drive End Bearing	Ball	Frame Material	Rolled Steel
Shaft Type	Special Extension	Shaft Diameter	0.875 in
Connection Drawing	52A105383AC	Outline Drawing	52A111881P1

This is an uncontrolled document once printed or downloaded and is subject to change without notice. Date Created:11/13/2025

SHEET REV 52A11881 0	THIRD ANGLE PROJECTION	REVISIONS			
		REV.	DESCRIPTION	DATE	APPROVED
		0	CREATED PER IS10 - 4907	11/15/10	KARTHIK



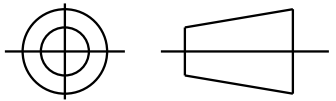
9	KCR	49	56HZ	15.41	13.04	9.74	8.11	2.10	4.14	2.70	8.73	3.61	3.12	10.71
8	KCR	49	56HZ	15.41	13.04	9.74	8.11	2.10	4.14	2.10	8.11	3.12	3.12	10.71
7	KCR	49	56HZ	14.33	11.96	9.67	7.74	1.60	4.00	2.10	8.18	3.20	2.80	9.63
6	KCR	49	56HZ	15.41	13.04	9.74	8.39	2.40	4.05	2.40	8.39	3.33	3.33	10.71
5	KCR	49	56HZ	15.41	13.04	9.74	8.39	2.40	4.05	2.15	8.18	3.20	3.33	10.71
4	KCR	49	56HZ	14.33	11.96	9.41	8.33	2.40	3.67	2.10	8.28	3.27	3.33	9.63
3	KCR	49	56HZ	15.41	13.04	9.74	8.39	2.40	4.05	2.15	8.18	3.20	3.33	10.71
2	KCR	49	56HZ	15.41	13.04	9.74	7.81	1.60	4.05	2.15	8.18	3.20	2.86	10.71
1	KCR	49	56HZ	14.33	11.96	9.67	8.39	2.40	4.00	2.15	8.18	3.20	3.33	9.63
P	TYPE	RBC SIZE	NEMA FR	"C"	"L+M"	"XH"	"XO"	"XR"	"XS"	"ZA"	"ZB"	"ZC"	"ZD"	MIN. SHELL

FOR ADDITIONAL INFO REFER TO: APPLIED PRACTICES DIMENSIONS ARE IN INCHES	SIGNATURES	DATE	REGAL-BELOIT CORPORATION OUTLINE 40 FRAME REDESIGN - GENERAL PURPOSE NOTOR - DRIP PROOF - BALL BEARING - WELDED BASE
	MODEL	-	
	DETAIL	KARTHIK	11/15/10
	CHECKED	.	.
	ENGRG	.	.
	MFG	.	.
	QUALITY	.	.
	ISSUED	DURGA	11/15/10
MATERIAL	SOLID MODEL: 52A11881		TITLE 40 FRAME REDESIGN - GENERAL PURPOSE NOTOR - DRIP PROOF - BALL BEARING - WELDED BASE SIZE DRAWING 52A11881
	SCALE: 1.000	REF. No: .	REV 0 SHEET 1 of 1



SHEET
REV
4

THIRD ANGLE PROJECTION

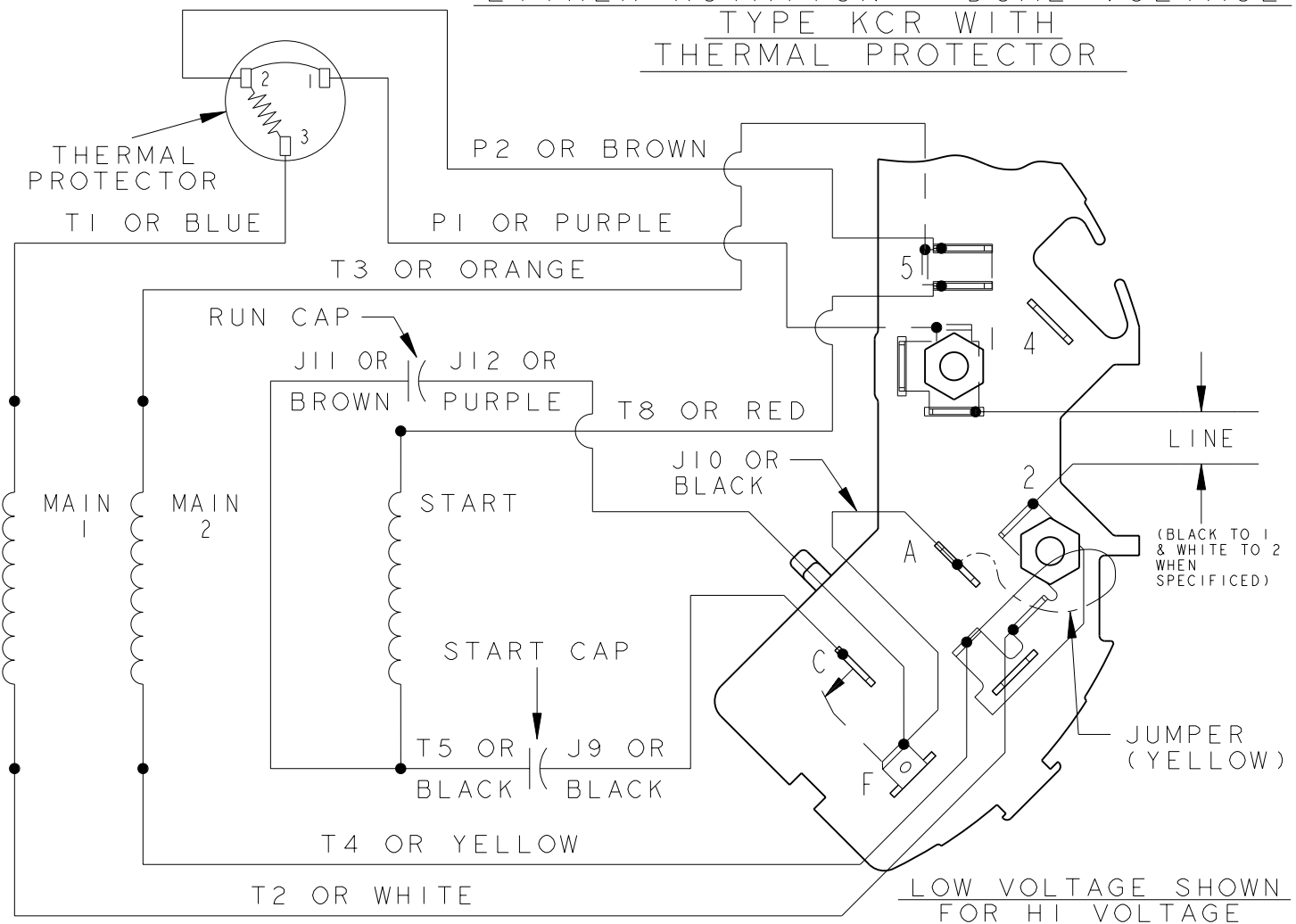


REVISIONS

REV.	DESCRIPTION	DATE	APPROVED
4	ADDED NOTE FOR LINE LEAD PER DS09-1045	07/15/09	ARCHANA

EITHER ROTATION - DUAL VOLTAGE
TYPE KCR WITH
THERMAL PROTECTOR

SIZE DRAWING NO.
52A105383AC



LOW VOLTAGE SHOWN
FOR HI VOLTAGE
SEE NOTE #1

- NOTE #1 - FOR HI VOLTAGE REMOVE BROWN (P2) FROM TERMINAL #5 AND PLACE ON TERMINAL #4, REMOVE WHITE (T2) FROM TERMINAL #2 AND PLACE ON TERMINAL #5.
- NOTE #2 - TO REVERSE ROTATION INTERCHANGE BLACK (J10) AND RED (T8) LEADS.
- NOTE #3 - WHEN MORE THAN ONE CAPACITOR IS USED CONNECT IN PARALLEL.

SWITCH - 115D958AC

REF. DIAG. - NONE

CONNECTION LABEL - 52X332051

SIGNATURES		DATE
MODEL	M. D. PAPE	03/03/88
DETAIL	.	.
CHECKED	.	.
ENGRG	.	.
MFG	.	.
FOR ADDITIONAL INFO REFER TO:	QUALITY	.
APPLIED PRACTICES	ISSUED	M. D. P. 03/03/88
DIMENSIONS ARE IN INCHES ✓	SOLID MODEL: 52A105383AC	



REGAL-BELOIT CORPORATION

TITLE		CONNECTION DIAGRAM	
FMF:		30 FRAME SWITCH REDESIGN	
SIZE	DRAWING	52A105383AC	REV 4
A			
SCALE: 1.000	REF. No:		SHEET 1 of 1

