

PRODUCT INFORMATION PACKET



Model No: 5KH32GNB815X

Catalog No: H712

Carbonator Pump Motor, 0.33 HP, 1 Ph, 60 Hz, 100-120/200-240 V, 1800 RPM, 48Y Frame, DP



Regal and LEESON are trademarks of Regal Rexnord Corporation or one of its affiliated companies.
©2025 Regal Rexnord Corporation, All Rights Reserved. MC017097E





Nameplate Specifications

Phase	1	Output HP	0.33 Hp
Output KW	0.25 kW	Voltage	100-120/200-240 V
Speed	1725/1425 rpm	Service Factor	1
Frame	48Y	Enclosure	Drip Proof
Thermal Protection	Automatic	Efficiency	63.7 %
Ambient Temperature	40 °C	Frequency	60 Hz
Current	5.5-5.6,2.7-2.8 A	Power Factor	0
Duty	Continuous	Insulation Class	B
KVA Code	L	Drive End Bearing Size	6203
Opp Drive End Bearing Size	6203	UL	Recognized
CSA	Yes	CE	N
Number of Speeds	1		

Technical Specifications

Electrical Type	Split Phase	Starting Method	SM
Poles	4	Rotation	Counterclockwise/Clockwise
Mounting	Rigid Base	Motor Orientation	ANY
Drive End Bearing	BALL	Opp Drive End Bearing	Ball
Frame Material	Rolled Steel	Overall Length	9.38 in
Frame Length	5.16 in	Shaft Diameter	0.630 in
Shaft Extension	1.5 in		
Connection Drawing	52A105383AA	Outline Drawing	52A111747P1

This is an uncontrolled document once printed or downloaded and is subject to change without notice. Date Created:07/29/2025

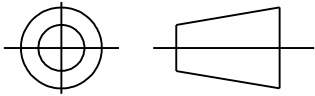
SHEET

REV

52A11747 0

SIZE DRAWING NO. A

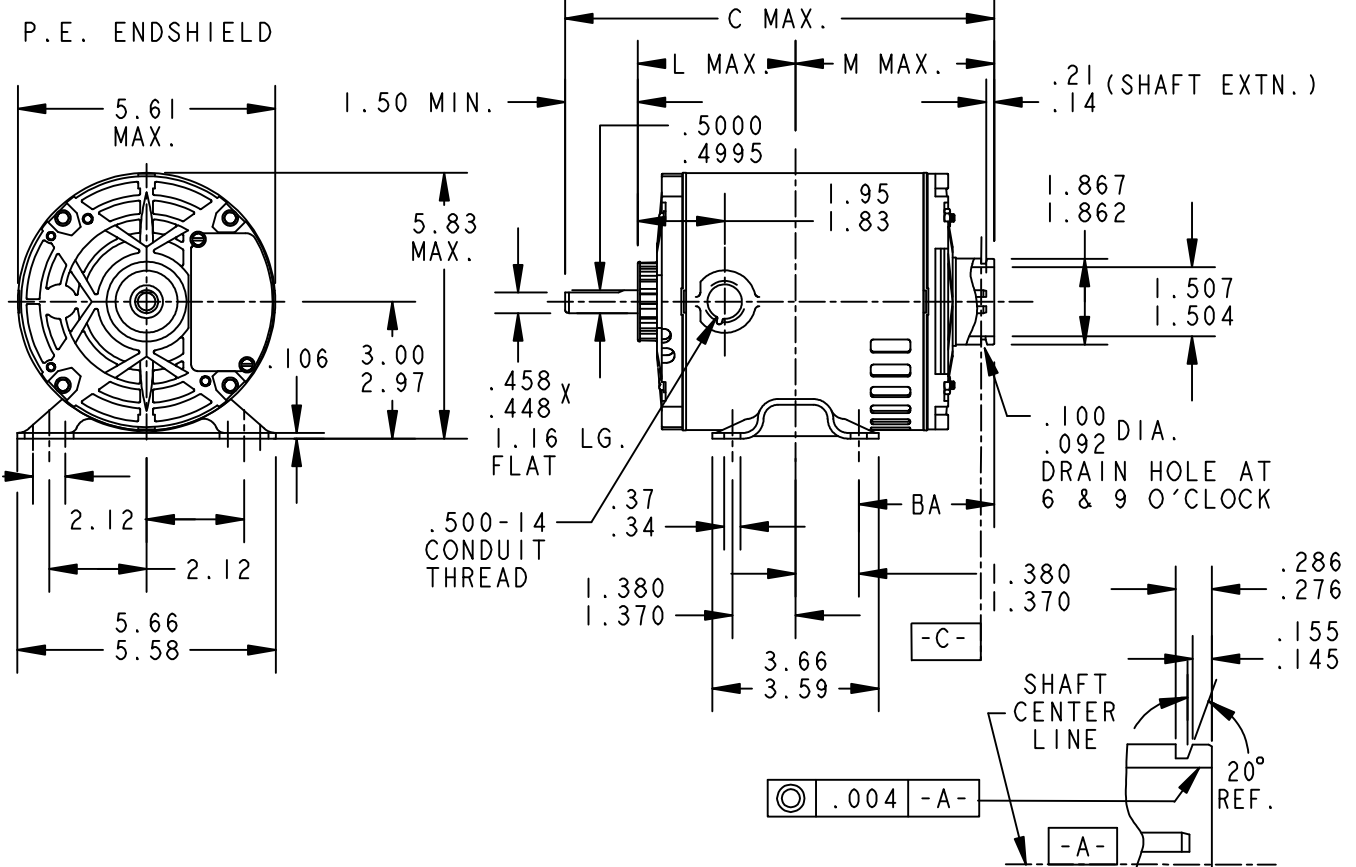
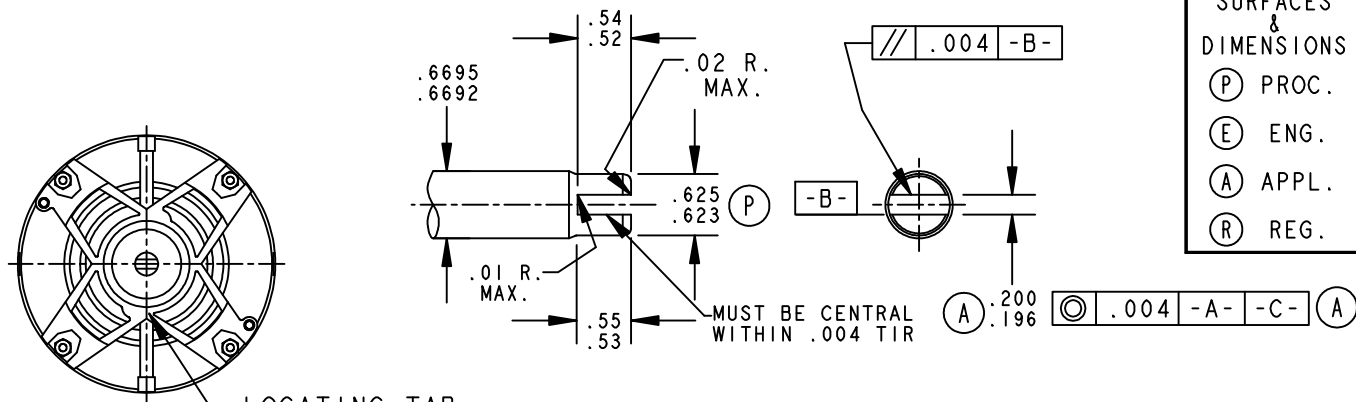
THIRD ANGLE PROJECTION



REVISIONS

REV.	DESCRIPTION	DATE	APPROVED

CONTROL SURFACES & DIMENSIONS
 (P) PROC.
 (E) ENG.
 (A) APPL.
 (R) REG.



I	KH	32	48Y	9.38	3.48	4.26	2.88/2.84	1.50
P	TYPE	GE SIZE	NEMA FR	C	L	M	BA	N

SIGNATURES		DATE
MODEL	MADHU	06/13/06
DETAIL	.	.
CHECKED	.	.
ENGRG	.	.
MFG	.	.
QUALITY	.	.
ISSUED	PRAVEEN.K	06/13/06
SOLID MODEL: 52A11747		

REGAL-BELOIT CORPORATION

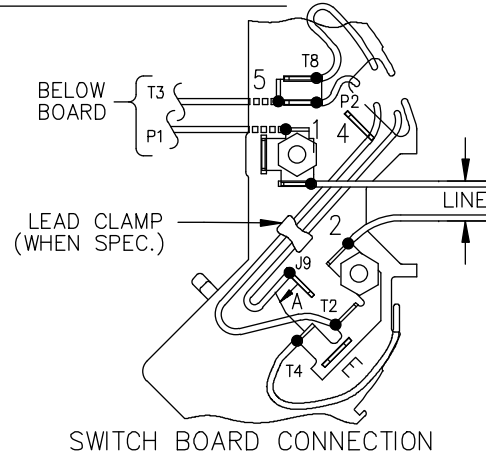
TITLE: **OUTLINE CARBONATOR PUMP - DRIP PROOF - WELDED BASE - BALL BEARING**

SIZE: DRAWING A

SCALE: 1.000 REF. No: .

SHEET 1 of 1

EITHER ROTATION, DUAL VOLTAGE, TYPE KC OR KH, WITH THERMAL PROTECTION



NOTE #1 - START CAP & J9 WHEN SPECIFIED (*). IF NO CAPACITOR (KH), CONNECT T5 DIRECTLY TO SWITCH (A). WHEN MORE THAN ONE CAPACITOR IS USED, CONNECT IN PARALLEL.

NOTE #2 - TO REVERSE ROTATION, INTER CHANGE RD(T8) AND BLK(J9-KC OR T5-KH) LEADS.

SWITCH REF. - 115D958AB	CONNECTION LABEL	CCW ROTATION: NP52X332051AA
		CW ROTATION: NP52X332051AC

NO.	REVISION	BY & DATE	CHK	TOLERANCES UNLESS SPECIFIED		FINISH	DRAWN	DRAWING NO.	REV.	
				DEC.	INCHES					
				.X	±0.1		M.D.P	06/29/87		
				.XX	±0.02		CHK			
				.XXX	±0.005		APPD	M.D.P	03/26/96	
				.XXXX	±0.0005		SCALE	1=1		
5	ADDED CONNECTION LABEL PER ECO-0030779	UD 02/06/13	PKG	ANG	±1.0		REF			
4	UPDATED PER ISO7-0150	MD 01/23/07					FMF			
				RFP		CAD FILE	52A105383AA	A	52A105383AA	5
				DIST						



TITLE CONNECTION DIAGRAM
30 FRAME SWITCH REDESIGN

THIS DRAWING IN DESIGN AND DETAIL IS OUR PROPERTY AND MUST NOT BE USED EXCEPT IN CONNECTION WITH OUR WORK. ALL RIGHTS OF DESIGN AND INVENTION ARE RESERVED. THIS IS AN ELECTRONICALLY GENERATED DOCUMENT - DO NOT SCALE THIS PRINT