

# PRODUCT INFORMATION PACKET



Model No: 5KH36MNA445X

Catalog No: H684

Carbonator Pump Motor, 1/2 HP, 1 Ph, 60 Hz, 100-120/200-240 V, 48Y Frame, DP



Regal and LEESON are trademarks of Regal Rexnord Corporation or one of its affiliated companies.  
©2025 Regal Rexnord Corporation, All Rights Reserved. MC017097E





**Nameplate Specifications**

Phase	1	Output HP	1/2 Hp
Output KW	0.37 kW	Voltage	100-120/200-240 V
Speed	1725 rpm	Service Factor	1
Frame	48Y	Enclosure	Drip Proof
Thermal Protection	Automatic	Ambient Temperature	40 °C
Frequency	60 Hz	Current	7.1-7.2/3.4-3.6 A
Power Factor	0	Duty	Continuous
Insulation Class	B	KVA Code	N
Drive End Bearing Size	6203	Opp Drive End Bearing Size	6203
UL	Recognized	CSA	Y
CE	N		

**Technical Specifications**

Electrical Type	Split Phase	Starting Method	Across The Line
Poles	4	Rotation	Selective Counterclockwise
Motor Orientation	Any	Drive End Bearing	Ball
Opp Drive End Bearing	Ball	Frame Material	Rolled Steel
Shaft Type	Special Extension		
Connection Drawing	52A105383AA	Outline Drawing	52A111834P1

This is an uncontrolled document once printed or downloaded and is subject to change without notice. Date Created:11/13/2025

THIRD ANGLE PROJECTION

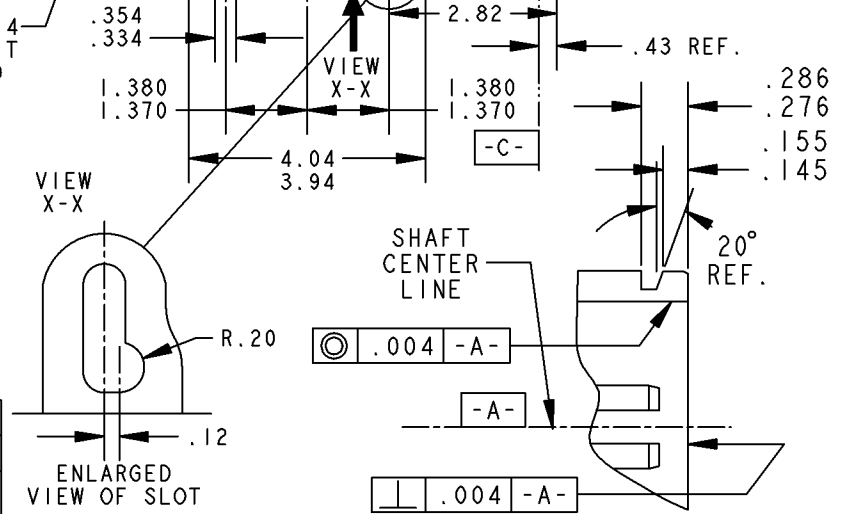
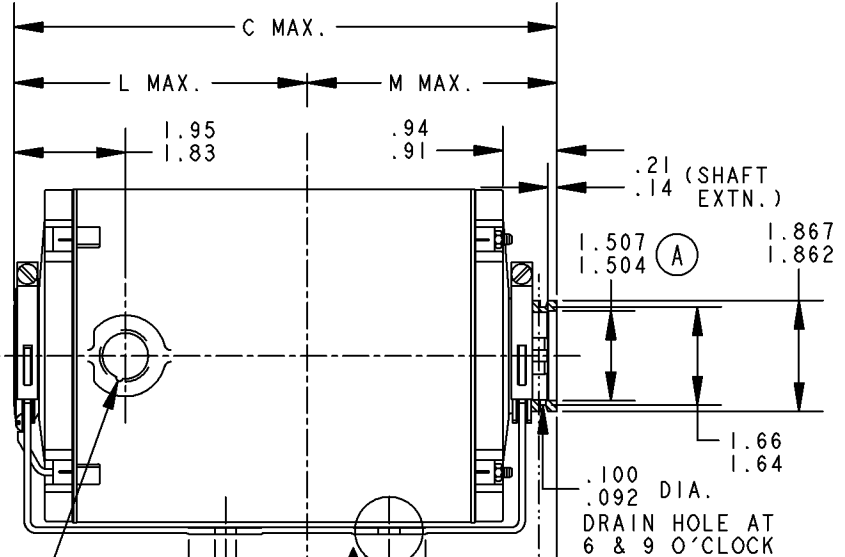
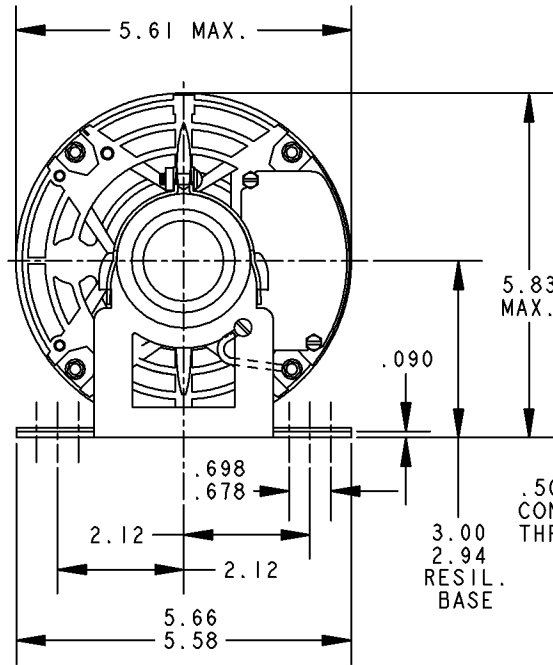
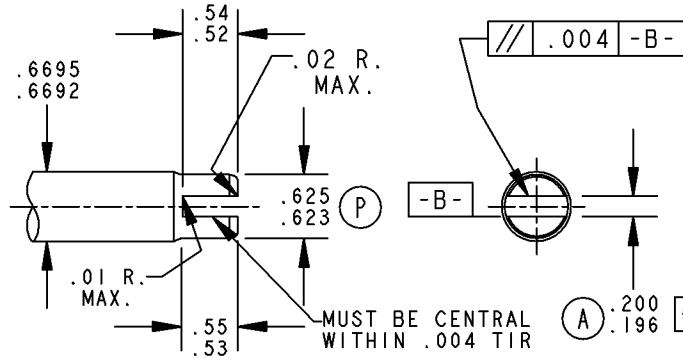
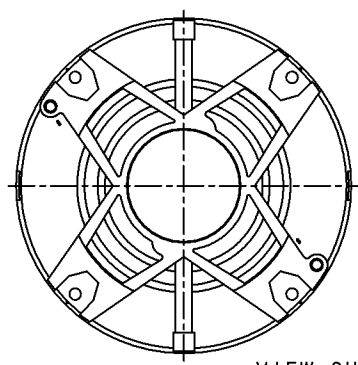
REVISIONS

REV.	DESCRIPTION	DATE	APPROVED
1	ADDED PART# 2 PER IS07-2678	01/28/08	BOMMU

REV 52A111834 1

SIZE DRAWING NO. A

CONTROL SURFACES & DIMENSIONS  
 (P) PROC.  
 (E) ENG.  
 (A) APPL.  
 (R) REG.



2	KH	37	48Y	9.15	5.01	4.28
1	KH	36	48Y	8.75	4.61	4.28
P	TYPE	RBC SIZE	NEMA FR	C	L	M

SIGNATURES		DATE
MODEL	VINAY	12/10/07
DETAIL	.	.
CHECKED	.	.
ENGRG	.	.
MFG	.	.
QUALITY	.	.
ISSUED	VINAY	12/10/07

FOR ADDITIONAL INFO REFER TO: APPLIED PRACTICES

DIMENSIONS ARE IN INCHES ✓

MATERIAL: SOLID MODEL: 52A111834

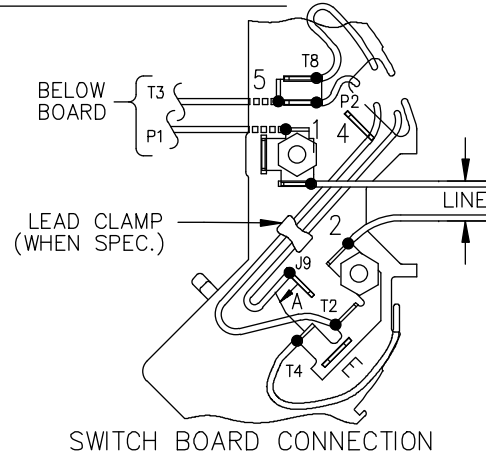
REGAL-BELOIT CORPORATION

TITLE: **OUTLINE**  
**CARBONATOR PUMP - DRIP PROOF**  
**RESIL. BASE - BALL BRG.**

SIZE: A DRAWING: 52A111834 REV: 1

SCALE: 1.000 REF. No: SHEET 1 of 1

EITHER ROTATION, DUAL VOLTAGE, TYPE KC OR KH, WITH THERMAL PROTECTION



NOTE #1 - START CAP & J9 WHEN SPECIFIED (\*). IF NO CAPACITOR (KH), CONNECT T5 DIRECTLY TO SWITCH (A). WHEN MORE THAN ONE CAPACITOR IS USED, CONNECT IN PARALLEL.

NOTE #2 - TO REVERSE ROTATION, INTER CHANGE RD(T8) AND BLK(J9-KC OR T5-KH) LEADS.

SWITCH REF. - 115D958AB	CONNECTION LABEL	CCW ROTATION: NP52X332051AA
		CW ROTATION: NP52X332051AC

NO.	REVISION	BY & DATE	CHK	ANG	FINISH	TOLERANCES UNLESS SPECIFIED		REGAL-BELOIT CORPORATION	DRAWN M.D.P 06/29/87		
						DEC.	INCHES				
						.X	±0.1	REGAL-BELOIT CORPORATION	CHK		
						.XX	±0.02		TITLE	APPD M.D.P 03/26/96	
5	ADDED CONNECTION LABEL PER ECO-0030779	UD 02/06/13	PKG	.XXX	±0.005	TITLE		CONNECTION DIAGRAM 30 FRAME SWITCH REDESIGN	SCALE 1=1		
4	UPDATED PER ISO7-0150	MD 01/23/07		.XXXX	±0.0005	MAT'L.			REF		
						FINISH		FMF			
THIS DRAWING IN DESIGN AND DETAIL IS OUR PROPERTY AND MUST NOT BE USED EXCEPT IN CONNECTION WITH OUR WORK. ALL RIGHTS OF DESIGN AND INVENTION ARE RESERVED. THIS IS AN ELECTRONICALLY GENERATED DOCUMENT - DO NOT SCALE THIS PRINT						RFP	CAD FILE	52A105383AA	SIZE	DRAWING NO.	REV.
						DIST			A	52A105383AA	5