

PRODUCT INFORMATION PACKET



Model No: 5KH49PN3026
Catalog No: H175
Fan and Blower Motor, 1/2-1/6 HP, 1 Ph, 60 Hz, 115 V, 56 Frame, DP



Regal and LEESON are trademarks of Regal Rexnord Corporation or one of its affiliated companies.
©2025 Regal Rexnord Corporation, All Rights Reserved. MC017097E





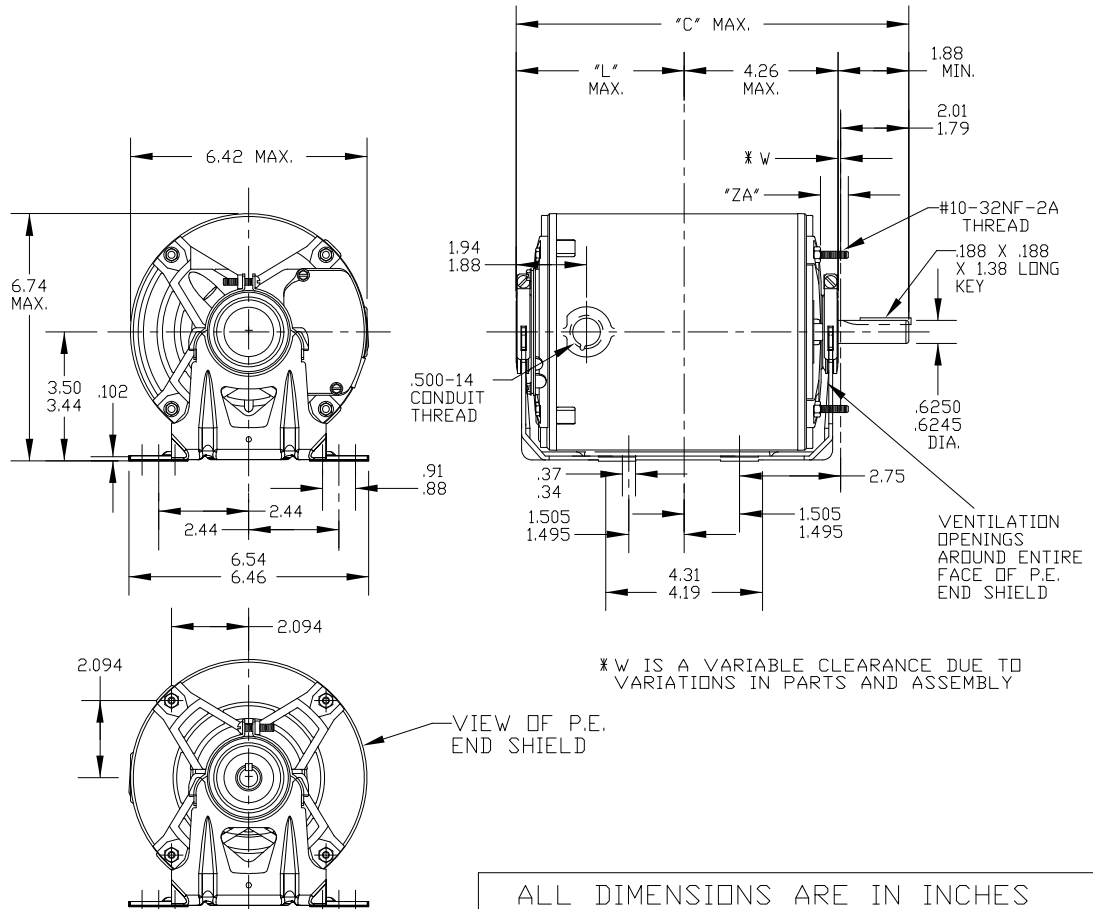
Nameplate Specifications

Phase	1	Output HP	1/2-1/6 Hp
Output KW	0.37 kW	Voltage	115 V
Speed	1725/1140 rpm	Service Factor	1.25
Frame	56	Enclosure	Drip Proof
Thermal Protection	No Protection	Ambient Temperature	40 °C
Frequency	60 Hz	Current	8.0/4.2 A
Power Factor	0	Duty	Continuous
Insulation Class	B	KVA Code	M
Drive End Bearing Size	6203	Opp Drive End Bearing Size	6203
UL	Recognized	CSA	Y
CE	N		

Technical Specifications

Electrical Type	Split Phase	Starting Method	Across The Line
Poles	4	Rotation	Selective Counterclockwise
Motor Orientation	Any	Drive End Bearing	Ball
Opp Drive End Bearing	Ball	Frame Material	Rolled Steel
Shaft Type	NEMA 56	Shaft Diameter	0.625 in
Connection Drawing	52A106478AA	Outline Drawing	52A109511P3

This is an uncontrolled document once printed or downloaded and is subject to change without notice. Date Created:11/13/2025



ALL DIMENSIONS ARE IN INCHES

4	KH/K	49	56	12.01	5.75	.62					7.68
3	KH/K	49	56	11.48	5.22	.62					7.15
2	KH/K	46	56	10.88	4.62	.62					6.55
1	KH/K	46	56	10.88	4.62	.62					6.55
P	TYPE	GE SIZE	NEMA FR.	"C"	"L"	"ZA"					MIN. SHELL

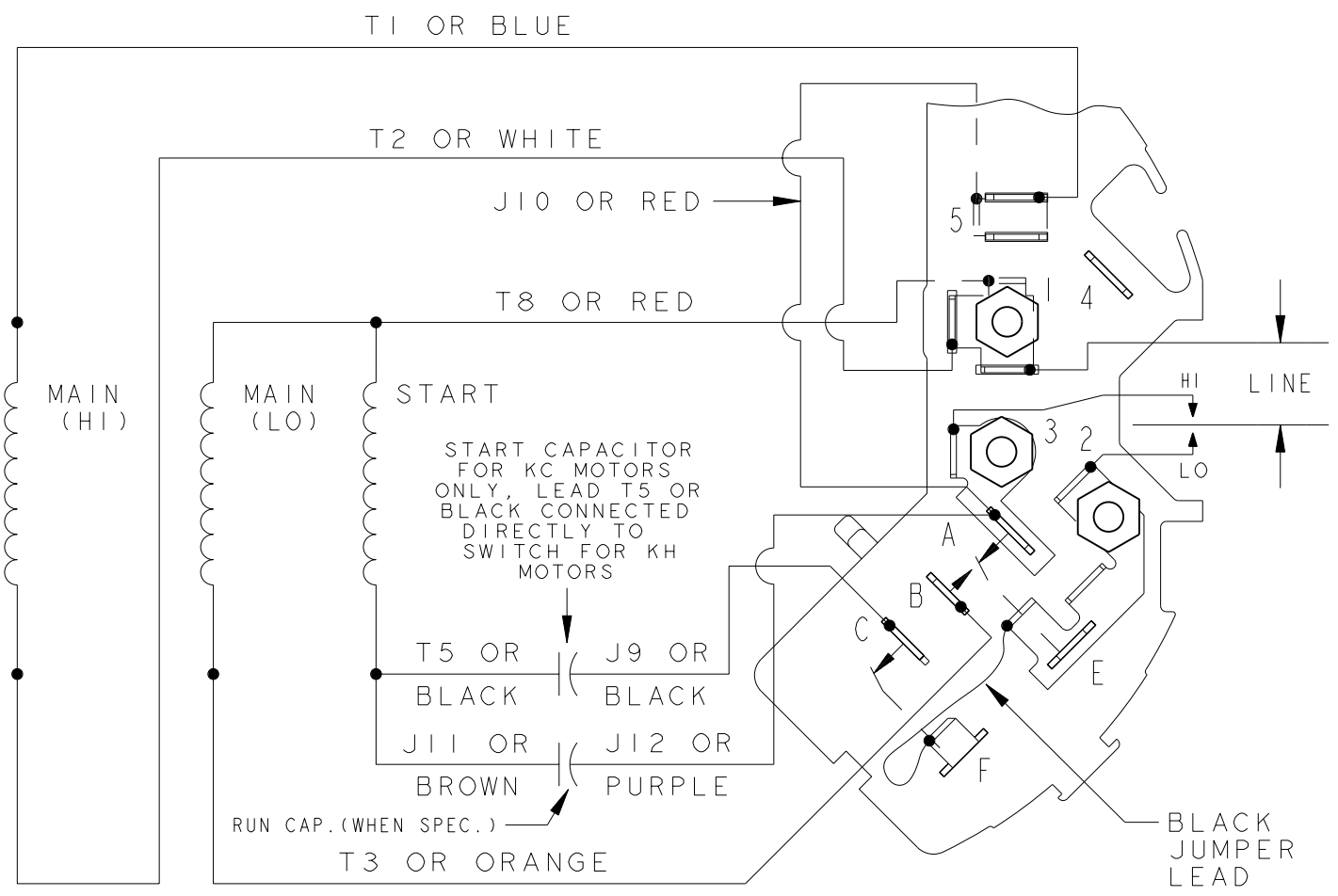
				TOLERANCES UNLESS SPECIFIED		Regal Beloit America, Inc.		DRAWN M.A.M 03/29/94	
				DEC.	INCHES			CHK	
				.X	±.1			APPD M.A.M 03/29/94	
				.XX	±.03	TITLE OUTLINE		SCALE 1=4	
4	UPDATED BASE AS PER ECR-0224925		PS 09/29/2023	SN	.XXX	±.005	GENERAL PURPOSE MOTOR - DRIP PROOF - BALL BEARING - RESILIENT BASE EXTENDED CLAMP SCREWS FMF - 40 FRAME REDESIGN		REF
3	CHG TO RBC FORMAT PER IS05-1777		03/16/06	SUDHA	.XXXX	±.0005	MAT'L.		FMF
NO.	REVISION		BY & DATE	CHK	ANG	± 7'30"	FINISH		PREV
THIS DRAWING IN DESIGN AND DETAIL IS OUR PROPERTY AND MUST NOT BE USED EXCEPT IN CONNECTION WITH OUR WORK ALL RIGHTS OF DESIGN AND INVENTION ARE RESERVED THIS IS AN ELECTRONICALLY GENERATED DOCUMENT - DO NOT SCALE THIS PRINT				RFP	CAD FILE 52A109511			SIZE	DRAWING NO. PAGE OF REV.
				DIST				A	52A109511 4 4



SHEET —	THIRD ANGLE PROJECTION	REVISIONS			
		REV.	DESCRIPTION	DATE	APPROVED
REV 5		5	UPDATED TO RBC FORMAT	01/09/06	MAM

SIZE DRAWING NO. 52A106478AA A

EITHER ROTATION
SINGLE VOLTAGE
TYPE KC, KCR, OR KH
2 SPEED
POLE CHANGING



NOTE #1 - TO REVERSE ROTATION INTERCHANGE BLUE (T1) AND WHITE (T2) LEADS.

NOTE #2 - WHEN MORE THAN ONE CAPACITOR IS USED CONNECT IN PARALLEL.

SWITCH (D) - 115D958BA
REF. DIAG. - 121A865
CONNECTION LABEL - 52X332073

FOR ADDITIONAL INFO REFER TO: APPLIED PRACTICES DIMENSIONS ARE IN INCHES ✓ MATERIAL	SIGNATURES	DATE
	MODEL M.D.P.	12/04/87
	DETAIL	.
	CHECKED	.
	ENGRG	.
	MFG	.
QUALITY	.	
ISSUED	M.D.P.	12/04/87
SOLID MODEL: 52A106478AA		

REGAL-BELOIT CORPORATION

TITLE CONNECTION DIAGRAM

FMF: 5KH36KN114G

SIZE DRAWING: A

SCALE: 1.000 REF. No: .

SHEET 1 of 1

