

# PRODUCT INFORMATION PACKET



Model No: 5R004  
Catalog No: 5R004  
1/5 HP Refrigeration Motor, 1075 RPM, 208-230 Volts, 48 Frame, TEAO  
Refrigeration Motors



Regal and Genteq are trademarks of Regal Rexnord Corporation or one of its affiliated companies.  
©2021 Regal Rexnord Corporation, All Rights Reserved. MC017097E





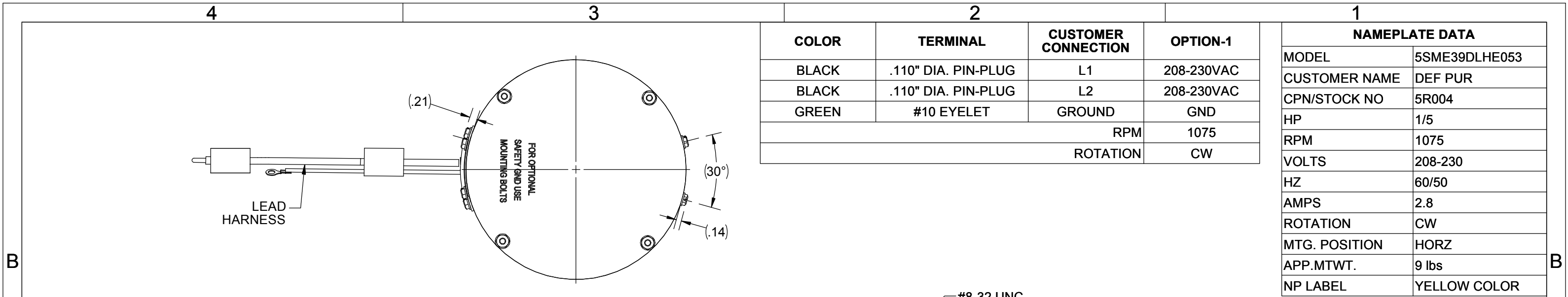
**Nameplate Specifications**

|                    |                     |                     |                           |
|--------------------|---------------------|---------------------|---------------------------|
| Output HP          | 1/5 Hp              | Output KW           | 0.15 kW                   |
| Frequency          | 60 Hz               | Voltage             | 208-230 V                 |
| Current            | 2.8 A               | Speed               | 1075 rpm                  |
| Service Factor     | 1                   | Phase               | 1                         |
| Duty               | Continuous Air Over | Insulation Class    | B                         |
| Frame              | 48                  | Enclosure           | Totally Enclosed Air Over |
| Thermal Protection | No                  | Ambient Temperature | 40 °C                     |
| UL                 | Recognized          | CSA                 | N                         |
| CE                 | N                   | Number of Speeds    | 1                         |

**Technical Specifications**

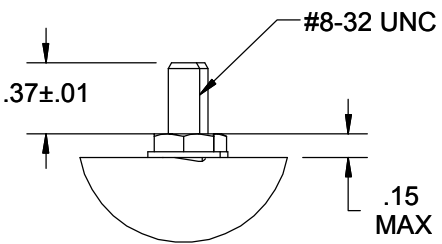
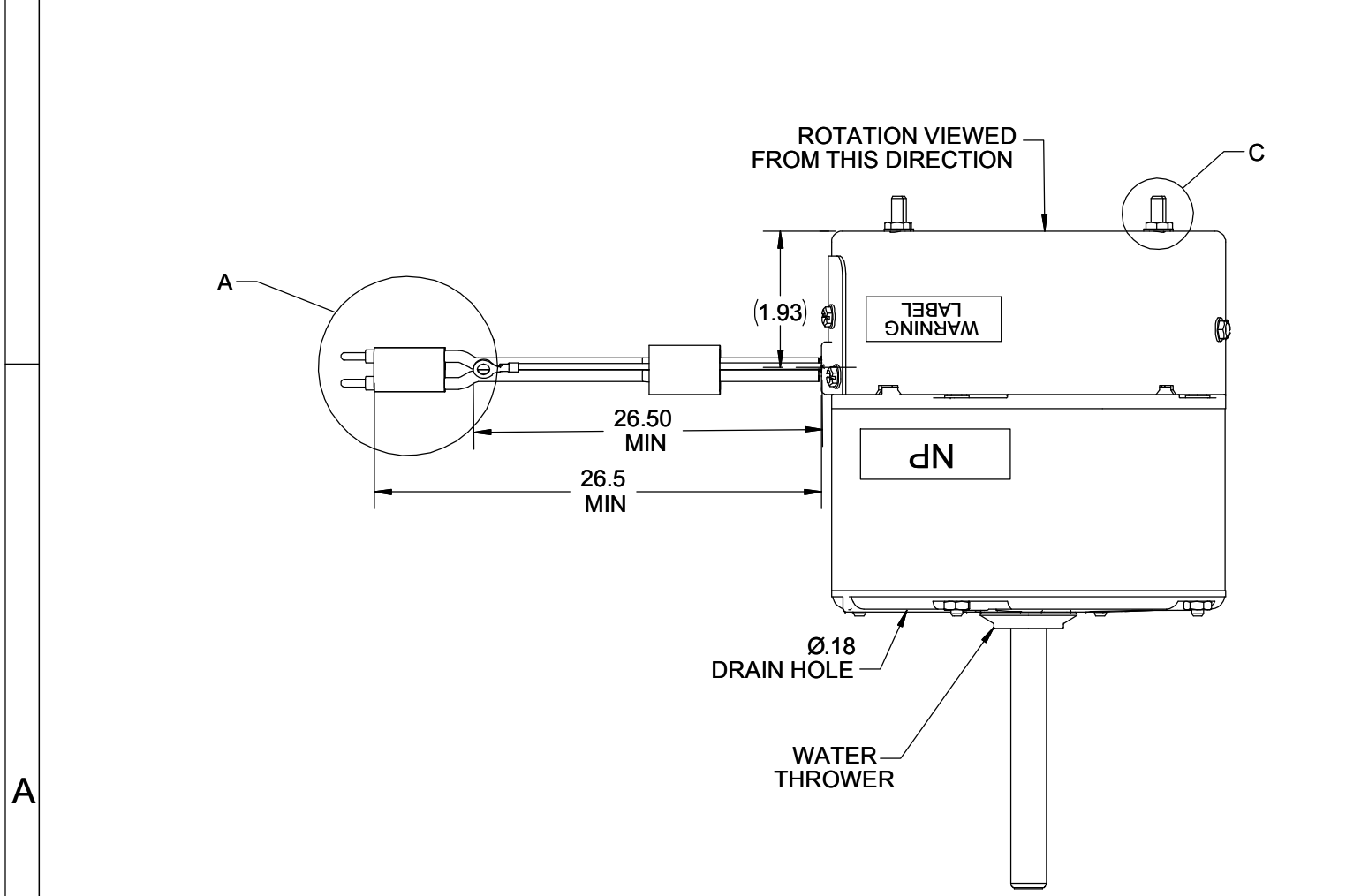
|                       |                                 |                      |                |
|-----------------------|---------------------------------|----------------------|----------------|
| Electrical Type       | Electronically Commutated Motor | Poles                | 12             |
| Rotation              | Clockwise                       | Mounting             | Extended Studs |
| Motor Orientation     | Hor                             | Drive End Bearing    | Ball           |
| Opp Drive End Bearing | Ball                            | Frame Material       | Rolled Steel   |
| Shaft Type            | Flat                            | Overall Length       | 9.41 in        |
| Frame Length          | 2.57 in                         | Shaft Diameter       | 0.500 in       |
| Shaft Extension       | 3.92 in                         | Thru-bolts Extension | 0 in           |
| Outline Drawing       | 5SME39DLHE053                   | Connection Drawing   | N/R            |

This is an uncontrolled document once printed or downloaded and is subject to change without notice. Date Created:10/11/2021

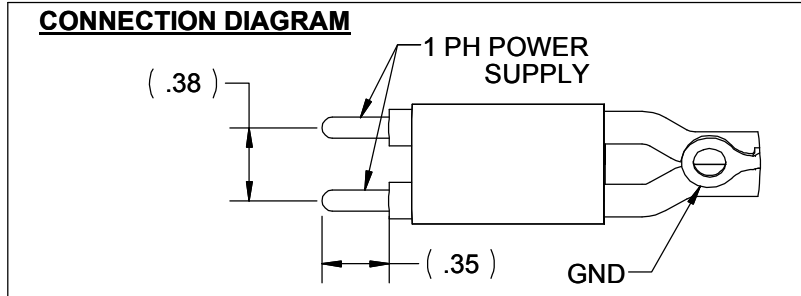
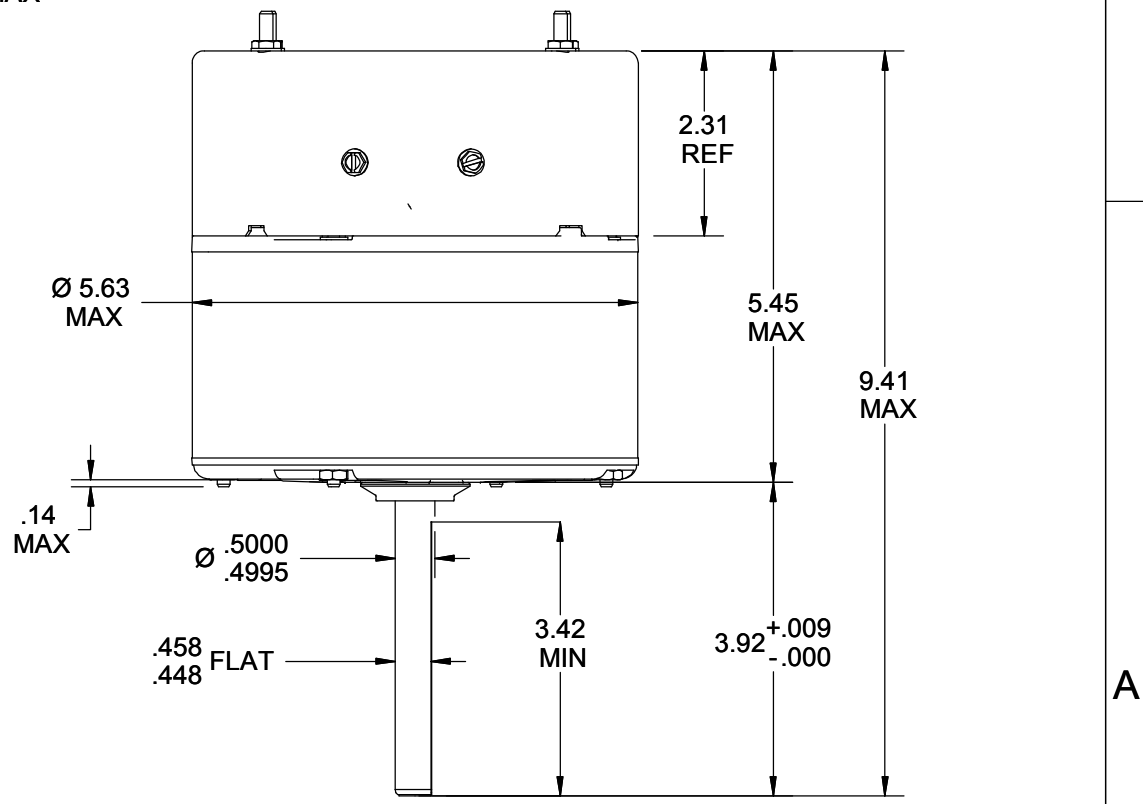


| COLOR | TERMINAL            | CUSTOMER CONNECTION | OPTION-1   |
|-------|---------------------|---------------------|------------|
| BLACK | .110" DIA. PIN-PLUG | L1                  | 208-230VAC |
| BLACK | .110" DIA. PIN-PLUG | L2                  | 208-230VAC |
| GREEN | #10 EYELET          | GROUND              | GND        |
|       |                     | RPM                 | 1075       |
|       |                     | ROTATION            | CW         |

| NAMEPLATE DATA |               |
|----------------|---------------|
| MODEL          | 5SME39DLHE053 |
| CUSTOMER NAME  | DEF PUR       |
| CPN/STOCK NO   | 5R004         |
| HP             | 1/5           |
| RPM            | 1075          |
| VOLTS          | 208-230       |
| HZ             | 60/50         |
| AMPS           | 2.8           |
| ROTATION       | CW            |
| MTG. POSITION  | HORZ          |
| APP.MTWT.      | 9 lbs         |
| NP LABEL       | YELLOW COLOR  |



DETAIL C  
SCALE 1 : 1



DRAWING REVISION D  
 REVISION BY KEP  
 REV DATE/© DATE 6/24/2019  
 ECO ECO-0169015  
 APPROVED BY B.J.STOUT  
 DATE 6/24/2019  
 ECO DESCRIPTION  
**ADDED AMP RATING TO NAMEPLATE DATA**  
 COPYRIGHT (PER REVISION DATE) REGAL BELOIT AMERICA, INC. ALL RIGHTS RESERVED. PROPRIETARY AND CONFIDENTIAL INFORMATION - THIS DOCUMENT IS THE PROPERTY OF REGAL BELOIT AMERICA, INC. ("OWNER") AND CONTAINS OWNER'S PROPRIETARY INFORMATION. ANY PERSON, CORPORATION OR OTHER FIRM RECEIVING IT IS DEEMED, BY RECEIVING IT, TO AGREE THAT IT, AND/OR ANY PART OF IT, SHALL NOT BE DISCLOSED TO ANY PERSON, CORPORATION OR OTHER ENTITY, DUPLICATED, AND/OR USED, EXCEPT AS EXPRESSLY APPROVED IN WRITING IN ADVANCE BY OWNER. THIS DOCUMENT SHALL BE RETURNED TO OWNER UPON REQUEST. IT MAY BE SUBJECT TO CERTAIN RESTRICTIONS UNDER APPLICABLE EXPORT CONTROL LAWS AND REGULATIONS.

PRIMARY DIMENSIONS ARE INCH  
 mm DIMENSIONS IN [BRACKETS]  
 ARE FOR REFERENCE ONLY

DRAWN BY NT  
 DATE 09/14/08  
 APPROVED BY  
 DATE  
 REFERENCE  
 THIRD ANGLE PROJECTION

**REGAL** Regal Beloit America, Inc.

DESCRIPTION  
**OUTLINE**  
 ECM ARKTIC 142

MATERIAL PROCESS/FINISH

SIZE **B** DRAWING NUMBER **5SME39DLHE053** SHEET 1 OF 1