

PRODUCT INFORMATION PACKET



Model No: 610
Catalog No: 610
1/20 HP Refrigeration Motor, 1550 RPM, 115-230 Volts, 42 Frame, OAO

Refrigeration Motors



Regal and Century are trademarks of Regal Rexnord Corporation or one of its affiliated companies.
©2022 Regal Rexnord Corporation, All Rights Reserved. MC017097E





Nameplate Specifications

| | | | |
|--------------------|---------------------|---------------------|---------------|
| Output HP | 1/20 Hp | Output KW | 0.04 kW |
| Frequency | 60 Hz | Voltage | 115-230 V |
| Current | 2.4-1.2 A | Speed | 1550 rpm |
| Service Factor | 1 | Phase | 1 |
| Duty | Continuous Air Over | Insulation Class | A |
| Frame | 42 | Enclosure | Open Air Over |
| Thermal Protection | Thermally Protected | Ambient Temperature | 40 °C |
| UL | Recognized | CSA | Y |
| CE | N | Number of Speeds | 1 |

Technical Specifications

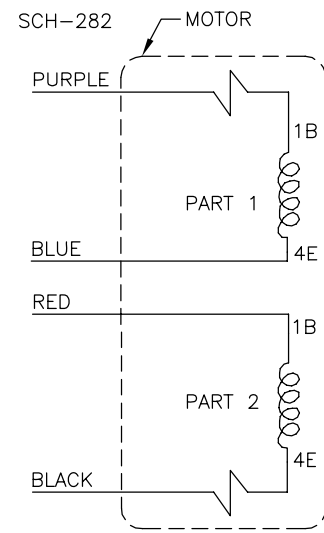
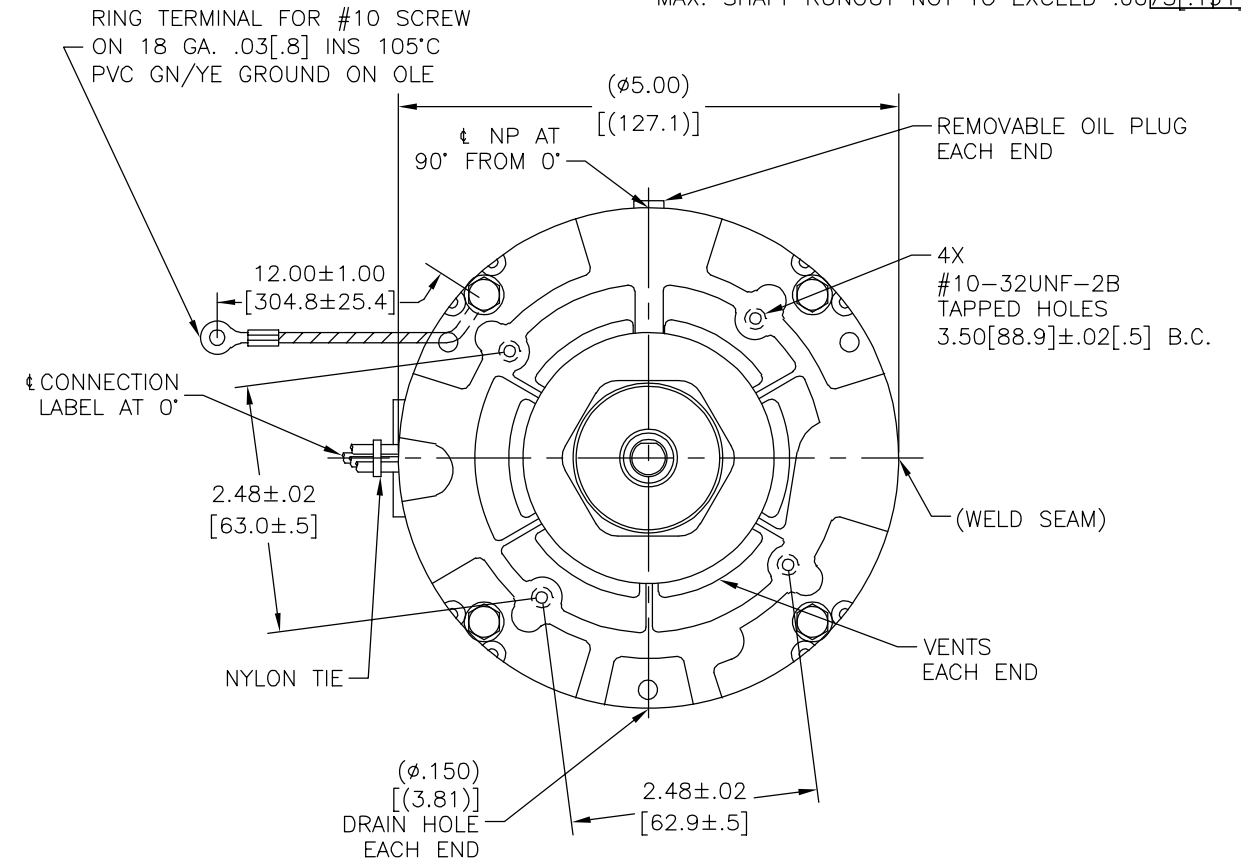
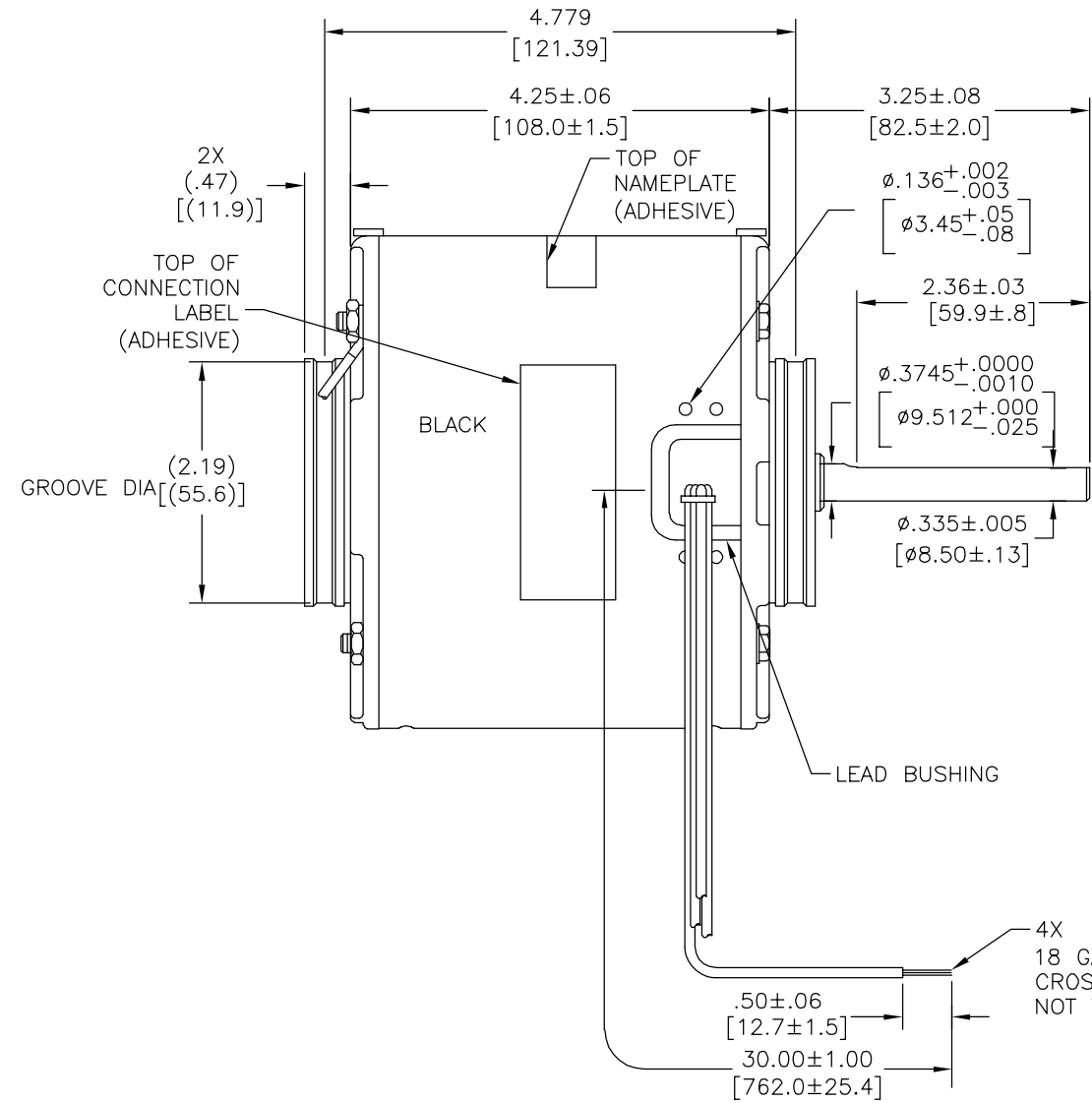
| | | | |
|-------------------|-----------------|-----------------------|---------------------|
| Electrical Type | Shaded Pole | Starting Method | Across The Line |
| Poles | 4 | Rotation | Clockwise Shaft End |
| Mounting | Resilient Rings | Motor Orientation | Horizontal |
| Drive End Bearing | Sleeve | Opp Drive End Bearing | Sleeve |
| Frame Material | Rolled Steel | Shaft Type | Flat |
| Overall Length | 8.87 in | Frame Length | 3.67 in |
| Shaft Diameter | 0.375 in | Shaft Extension | 3 1/4 in |
| Outline Drawing | 610-S01 | | |

This is an uncontrolled document once printed or downloaded and is subject to change without notice. Date Created:02/07/2022

CUSTOMER IS SOLELY RESPONSIBLE FOR MOTOR PERFORMANCE AND SUITABILITY IN APPLICATIONS FOR CUSTOMER'S USES.

| REV | ECO | REV BY | DATE | APPD | DATE |
|-----|---------|------------|------------|--------------|------------|
| B | 0028995 | J.AGUILERA | 10-23-2012 | D.BALDERRAMA | 10-23-2012 |

END PLAY .005[.13] MIN - .040[1.02] MAX
 MAX. SHAFT RUNOUT .001[.03] PER INCH
 MAX. SHAFT RUNOUT NOT TO EXCEED .0075[.191]



| COLOR CODE | |
|------------|---|
| 115V | PURPLE & RED TO LINE BLUE & BLACK TO LINE |
| 230V | PURPLE TO ONE LINE BLACK TO OTHER LINE RED & BLUE TOGETHER & INS. |

GEOMETRIC CHARACTERISTICS & SYMBOLS
 ▭ FLATNESS
 - STRAIGHTNESS
 < ANGLARITY
 ⊥ PERPENDICULARITY (SQUARENESS)
 // PARALLELISM
 ○ ROUNDNESS (CIRCULARITY)
 ⌀ CYLINDRICITY
 △ PROFILE OF ANY SURFACE
 ▽ PROFILE OF ANY LINE
 ↗ RUNOUT
 ⊕ TRUE POSITION
 ⊙ CONCENTRICITY
 = SYMMETRY
 ASME Y14.5M 1994

REGAL-BELOIT CORPORATION (RBC) PROVIDES TECHNICAL ASSISTANCE TO OUR CUSTOMERS IN SEVERAL AREAS. SINCE RBC DOES NOT RECEIVE ALL DATA CONCERNING THE USE AND APPLICATION OF THE MOTOR, THE SUITABILITY OF THE MOTOR FOR THE APPLICATION MUST BE DETERMINED BY THE CUSTOMER.

DIMENSIONS WITHOUT TOLERANCES ARE FOR REFERENCE ONLY.

| | | |
|--|----------|-------------------------------------|
| DR BY: | T.HUANG | 06-21-2011 |
| APPD: | B.C.SHEN | 06-21-2011 |
| THIRD ANGLE PROJECTION | | EDS DATE 11-11-2011 FORMAT REV H |
| CONFIDENTIAL: THIS DRAWING AND ITS INFORMATION ARE THE EXCLUSIVE AND CONFIDENTIAL PROPERTY OF REGAL-BELOIT CORPORATION AND ARE NOT TO BE DISCLOSED, DUPLICATED, DISTRIBUTED OR OTHERWISE USED WITHOUT THE WRITTEN CONSENT OF REGAL-BELOIT CORPORATION. -ALL RIGHTS RESERVED. | | |

ROT: CWLE-CWSE

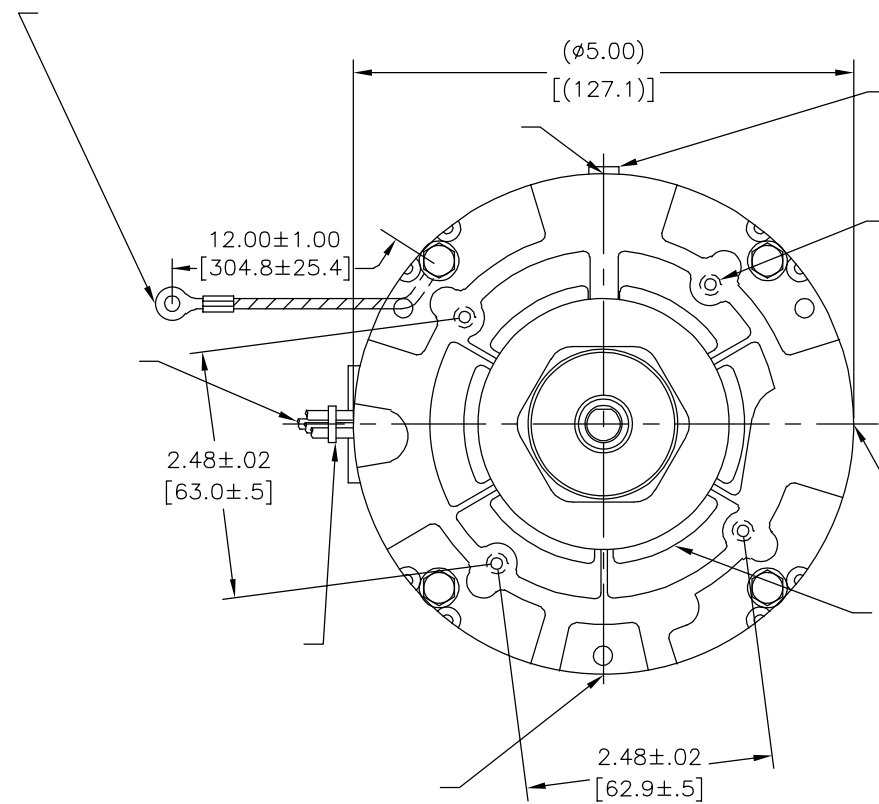
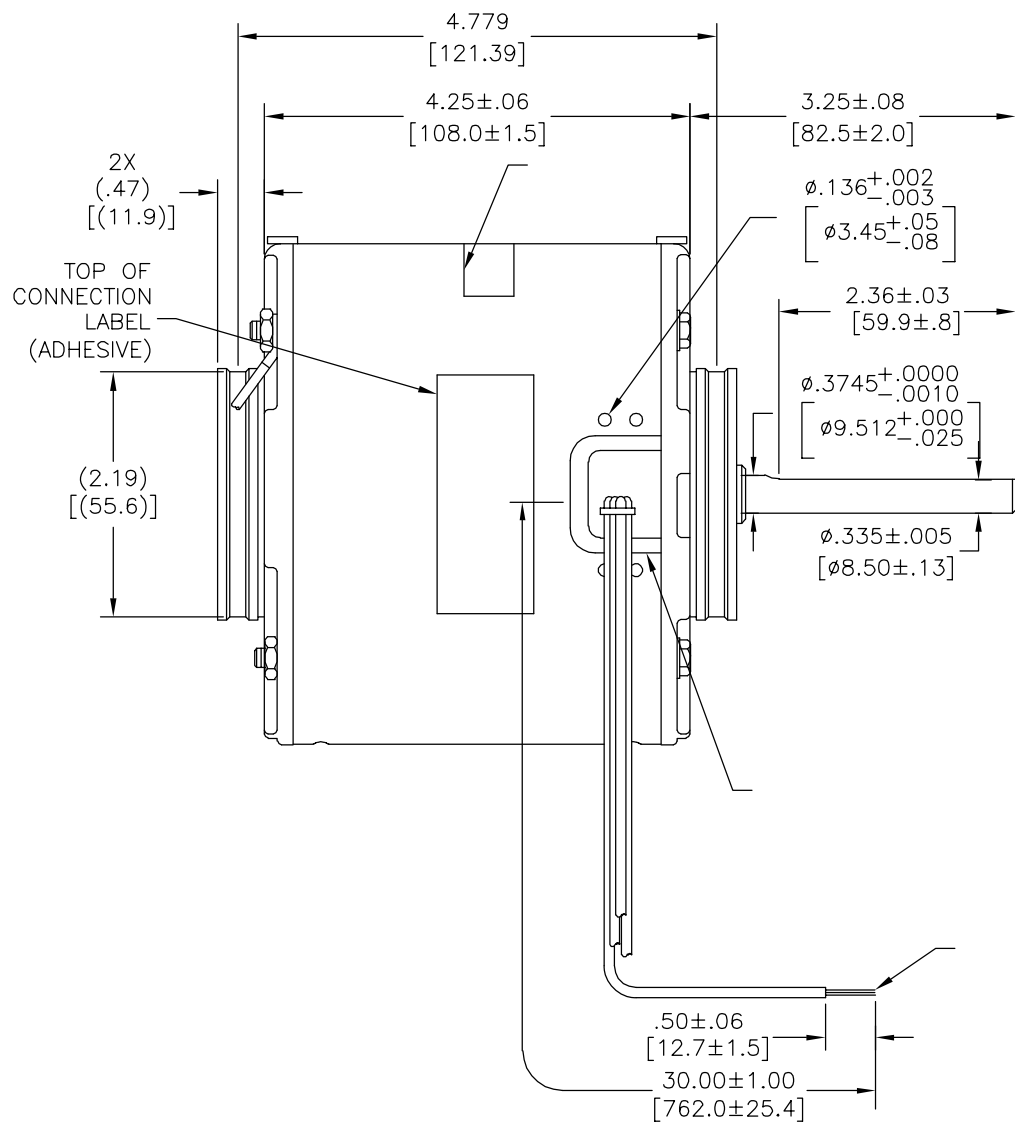
NAMEPLATE DATA:

Century Tipp City, OH THERMALLY PROTECTED

SER DATE & PO# PLT LTR MOD DA2D043N# STK NO. 610
 VOLTS 115/230 HZ 60 AMPS 2.4/1.2
 RPM 1550 SP1 PH1 CAP
 INS CL AMB °C HP 1/20 CONT. A.O. ROTATION →
 BRG SLV MECH.REV. ASSEMBLED IN MEXICO

| | |
|---|---------------|
| REGAL REGAL-BELOIT CORPORATION | |
| DESCRIPTION MODEL-RFHP-42FR OUTLINE | |
| SIZE C | DWG NO 610 |
| SCALE NONE | SHEET 1 |

| | | | | | |
|-----------|---------|---------------|------------|---------------|------------|
| REVISION: | ECO | REVISADO POR: | FECHA: | APROBADO POR: | FECHA: |
| B | 0028995 | J.AGUILERA | 10-23-2012 | D.BALDERRAMA | 10-23-2012 |



CONNECTION LABEL
63T7432-180

ELECTRICALLY PER
SAMPLE S-9784D

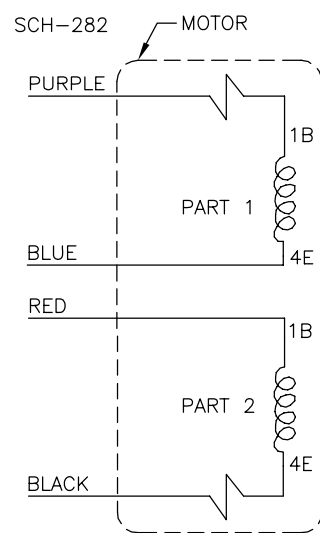
ROT: CWLE-CWSE



Tipp City, OH
THERMALLY PROTECTED



SER DATE & PO# PLT LTR MOD DA2D043N# STK NO. 610
VOLTS 115/230 HZ 60 AMPS 2.4/1.2
RPM 1550 SP1 PH1 CAP
INS CL AMB °C HP 1/20 CONT. A.O. ROTATION →
BRG SLV MECH.REV. ASSEMBLED IN MEXICO



CARACTERISTICAS DE GEOMETRIA Y SIMBOLOS
 □ PLANICIDAD
 — RECTITUD
 < ANGULARIDAD
 ⊥ PERPENDICULARIDAD (A ESCUADRA)
 // PARALELISMO
 ○ REDONDEZ (CIRCULARIDAD)
 ∅ CILINDRICIDAD
 △ PERFIL DE CUALQUIER SUPERFICIE
 ∇ PERFIL DE CUALQUIER LINEA
 / VARIACION
 ⊕ POSICION REAL
 ⊙ CONCENTRICIDAD
 = SIMETRIA
 ASME Y14.5M 1994

REGAL-BELOIT CORPORATION (RBC)
 PROVEE ASISTENCIA TECNICA A
 NUESTROS CLIENTES EN VARIAS AREAS.
 DESDE QUE RBC NO RECIBE TODOS
 LOS DATOS EN RELACION AL USO Y A
 LA APLICACION DEL MOTOR, LA
 APLICACION ADECUADA DEL MOTOR
 DEBE SER DETERMINADA POR EL
 CLIENTE.

DIMENSIONES SIN TOLERANCIA SON
 DE REFERENCIA SOLAMENTE

DIBUJADO POR:
T.HUANG
 APROBADO POR:
B.C.SHEN

06-21-2011
 06-21-2011
 TERCER ANGULO DE PROYECCION
 FECHA EDS: 11-11-2011
 REV. FORMATO: H

CONFIDENCIAL: ESTE DIBUJO Y SU INFORMACION SON PROPIEDAD DE USO EXCLUSIVO Y CONFIDENCIAL DE REGAL-BELOIT CORPORATION. Y NO DEBERAN SER REVELADOS, DUPLICADOS, DISTRIBUIDOS O USARSE DE OTRA MANERA SIN EL CONSENTIMIENTO ESCRITO DE REGAL-BELOIT CORPORATION. -TODOS LOS DERECHOS RESERVADOS.

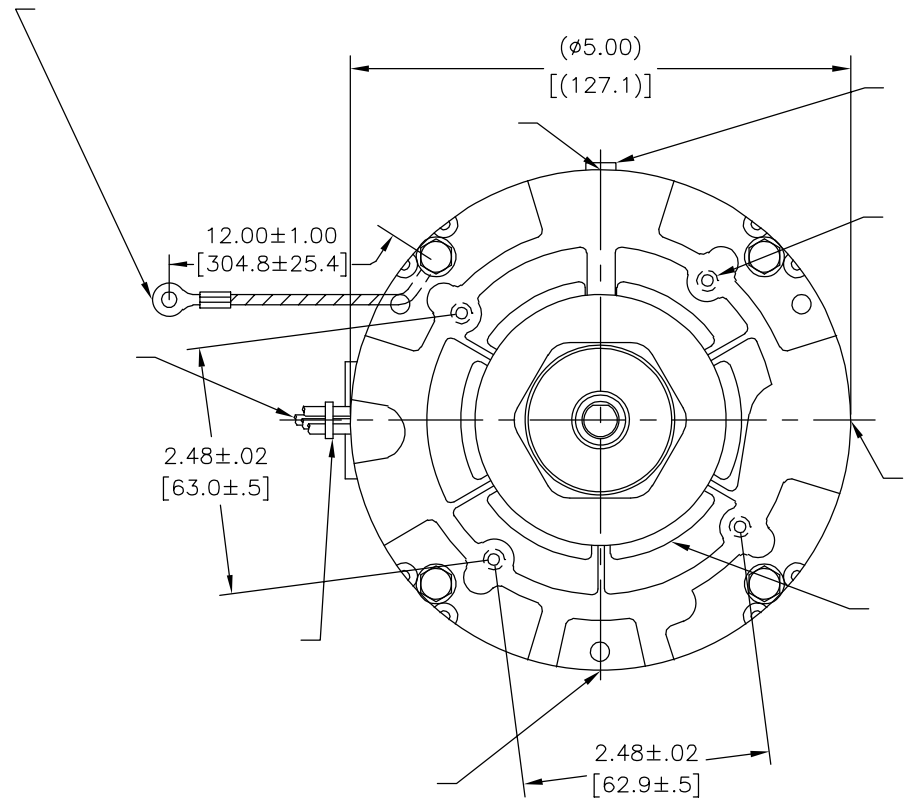
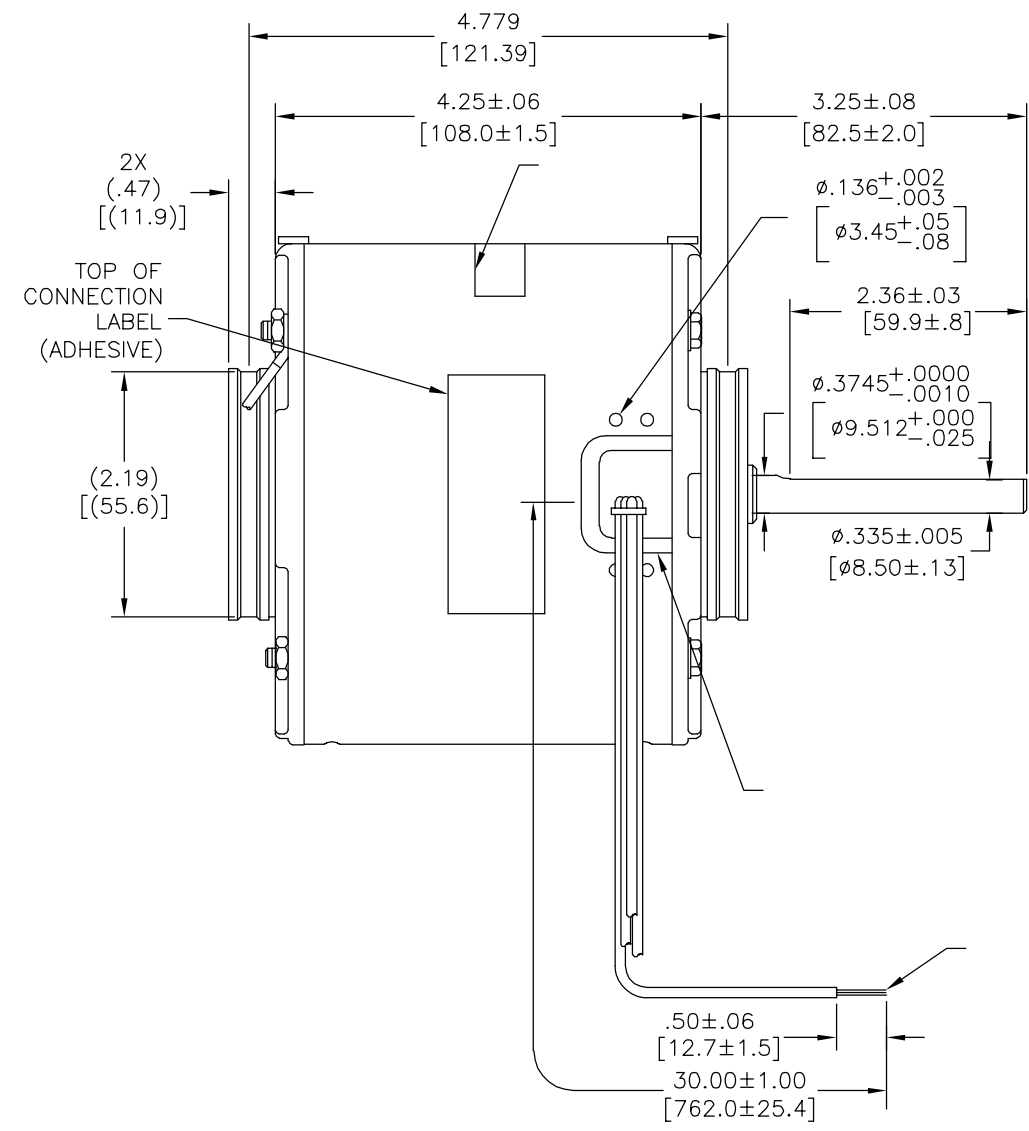
REGAL REGAL-BELOIT CORPORATION

DESCRIPCION:
**MODEL-RFHP-42FR
 OUTLINE**

TAMAÑO: C NUMERO DE DIBUJO: 610

ESCALA:NONE HOJA: 1

| | | | | | |
|----|---------|------------|------------|--------------|------------|
| 版本 | ECO | 编制 | 日期 | 批准 | 日期 |
| B | 0028995 | J.AGUILERA | 10-23-2012 | D.BALDERRAMA | 10-23-2012 |



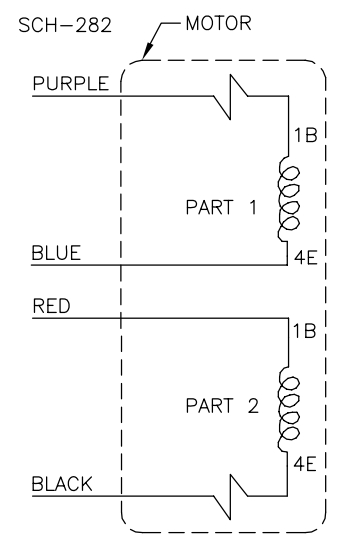
CONNECTION LABEL
63T7432-180

ELECTRICALLY PER
SAMPLE S-9784D

ROT: CWLE-CWSE

Century Tipp City, OH
THERMALLY PROTECTED

SER DATE & PO# PLT LTR MOD DA2D043N# STK NO. 610
VOLTS 115/230 HZ 60 AMPS 2.4/1.2
RPM 1550 SP1 PH1 CAP
INS CL AMB °C HP 1/20 CONT. A.O. ROTATION →
BRG SLV MECH.REV. ASSEMBLED IN MEXICO



- 形位公差
- 平面度
 - 直线度
 - ∠ 倾斜度
 - ⊥ 垂直度
 - ∥ 平行度
 - 圆度
 - ⊘ 圆柱度
 - ⌒ 面轮廓度
 - △ 线轮廓度
 - ⌒ 圆跳动
 - ⊕ 位置度
 - ⊙ 同轴度
 - ≡ 对称度

除另有注明
尺寸公差如下:

| | | | | |
|----|------|-------|--------|--------|
| 英寸 | ±.1 | ±.02 | ±.005 | ±.0005 |
| 毫米 | ±0.5 | ±0.13 | ±0.013 | |

角度 ±.50 度
清理毛刺和尖棱
英寸 .003-.015 毫米 0.1-0.4
内圆角
英寸 .020 毫米 0.5

表面粗糙度
英制 125 米制 3.2

米制尺寸显示在 L]

绘图: T.HUANG 06-21-2011
批准: B.C.SHEN 06-21-2011
第三角投影

图纸格式发布日期 11-11-2011
图纸格式版本 H

机密: 本图纸及相关信息所有权归REGAL-BELOIT CORPORATION
未经REGAL-BELOIT CORPORATION书面授权, 不得泄露、
复制、传播或作其他用途。—版权所有

| | |
|---------------------------------------|----------------------------|
| REGAL REGAL-BELOIT CORPORATION | |
| 名称 | MODEL-RFHP-42FR OUTLINE |
| 图幅 | C |
| 图号 | 610 |
| 比例 | NONE |
| 页号 | 1 |

ASME Y14.5M 1994