

PRODUCT INFORMATION PACKET



Model No: 613A

Catalog No: 613A

Refrigeration Motor, 1/15 HP, 1 Ph, 60 Hz, 115/208-230 V, 1550 RPM, 1 Speed, 42 Frame,
SEMI ENCLOSED



Regal and Century are trademarks of Regal Rexnord Corporation or one of its affiliated companies.
©2022 Regal Rexnord Corporation, All Rights Reserved. MC017097E





Nameplate Specifications

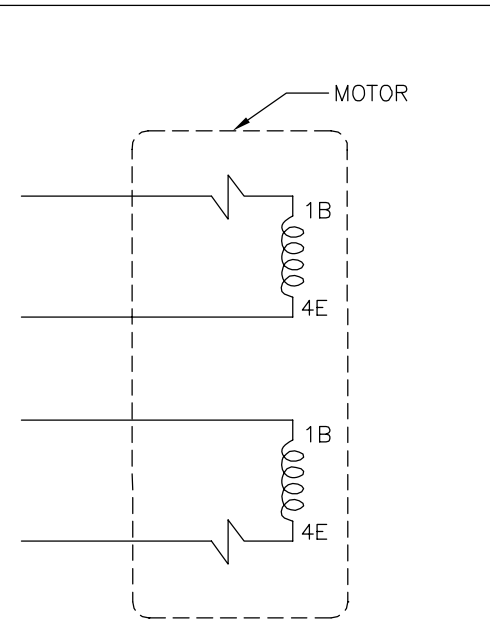
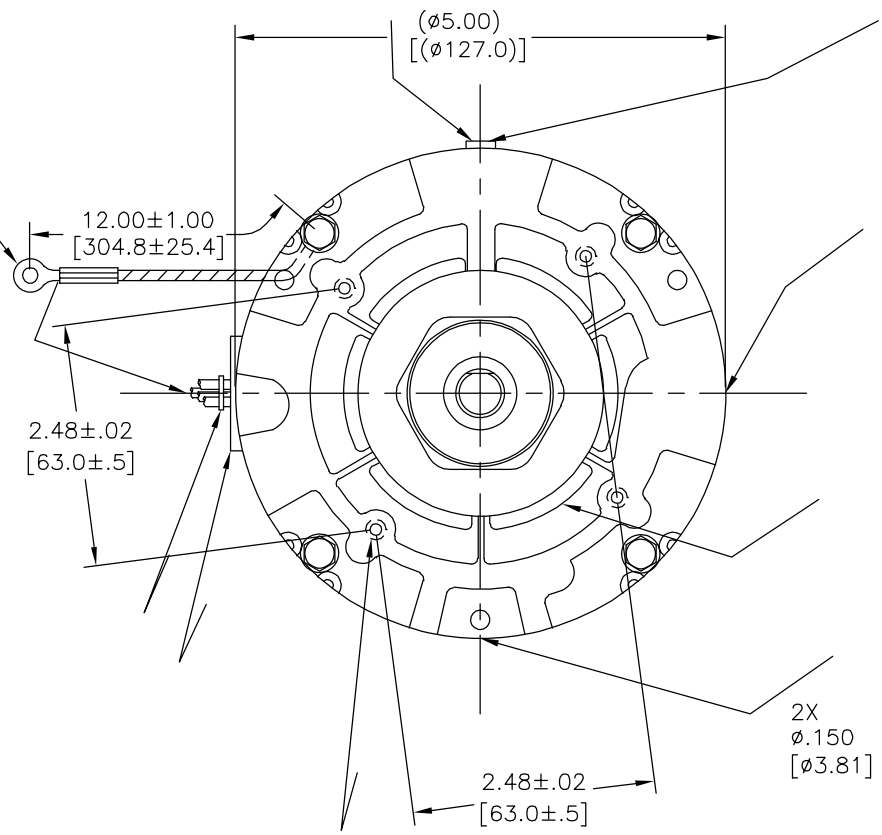
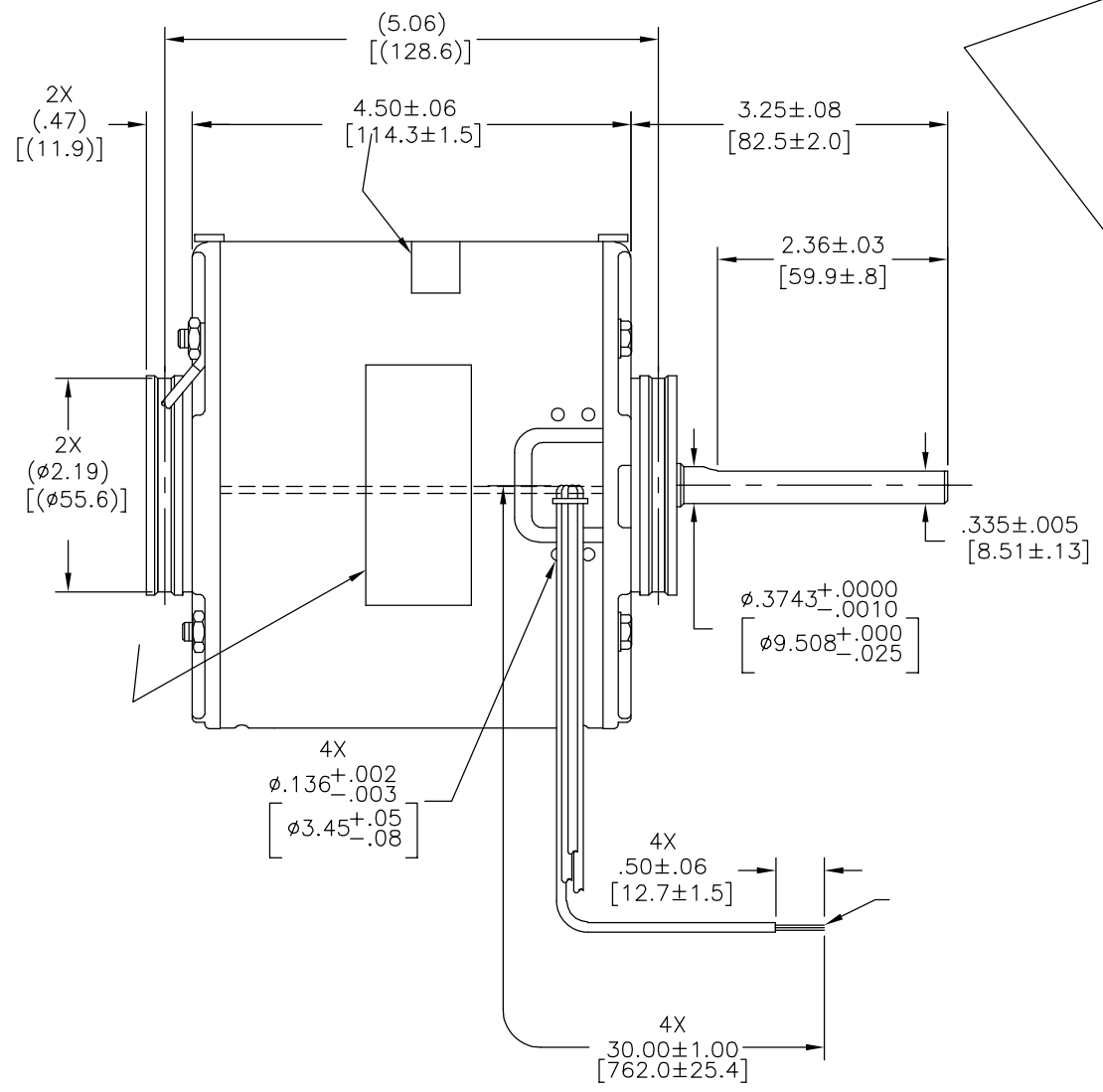
Output HP	1/15 Hp	Output KW	0.05 kW
Frequency	60 Hz	Voltage	115/208-230 V
Current	2.8/1.4-1.4 A	Speed	1550 rpm
Service Factor	1	Phase	1
Duty	Continuous Air Over	Insulation Class	A
Frame	42Y	Enclosure	Semi Enclosed
Thermal Protection	Thermally Protected	Ambient Temperature	40 °C
UL	Recognized	CSA	Y
CE	N	Number of Speeds	1

Technical Specifications

Electrical Type	Shaded Pole	Starting Method	Across The Line
Poles	4	Rotation	Counterclockwise Shaft End
Mounting	Resilient Rings	Drive End Bearing	Sleeve
Opp Drive End Bearing	Sleeve	Frame Material	Rolled Steel
Shaft Type	Flat	Frame Length	4.50 in
Shaft Diameter	0.375 in	Shaft Extension	3.25 in
Outline Drawing	DA2E7130-S01		

This is an uncontrolled document once printed or downloaded and is subject to change without notice. Date Created:11/28/2022

版本	ECO	编制	日期	批准	日期
F	0029017	L. BERNAL	10-17-2012	R. RASCON	10-17-2012



115 V	
230 V	

- 形位公差
- 平面度
- 直线度
- ∠ 倾斜度
- ⊥ 垂直度
- // 平行度
- 圆度
- ⊘ 圆柱度
- ⊙ 圆跳动
- △ 面轮廓度
- ⌒ 线轮廓度
- ↗ 圆跳动
- ⊕ 位置度
- ⊗ 同轴度
- ≡ 对称度

ASME Y14.5M 1994

REGAL-BELOIT CORPORATION (RBC) 在个别领域为客户提供技术支持。鉴于RBC未收到任何涉及电机使用和应用环境的数据，电机的适用性由客户自己决定。

未注公差尺寸仅供参考。

绘图:	L. BERNAL	10-17-2012
批准:	A. BAUGHMAN	10-17-2012
第三角投影		图纸格式发布日期 11-11-2011 图纸格式版本 H
机密: 本图纸及相关信息所有权归REGAL-BELOIT CORPORATION。未经REGAL-BELOIT CORPORATION书面授权, 不得泄露、复制或传播作其他用途。—版权所有		

ROT: CCWLE-CCWSE

Tipp City, OH
THERMALLY PROTECTED

SER. DATE & PO# PLT LTR MOD DA2E130N
VOLTS 115/208-230 HZ 60 AMPS 2.8/1.4-1.4
RPM 1550 SP PH 1 CAP
INS CL AMB °C HP 1/15 CONT A.O.
BRG SLV MECH. REV.

← ROTATION →
ASSEMBLED IN MEXICO

REGAL-BELOIT CORPORATION	
名称	MODEL-RFHP-42FR OUTLINE
图幅	C
图号	DA2E7130
比例	NONE
页号	1