

PRODUCT INFORMATION PACKET



Model No: 6407
Catalog No: 6407

EVERGREEN® CM Fan and Blower Motor, 3/4 HP, 1 Ph, 60/50 Hz, 460 V, 1075 RPM, 1 Speed, 48 Frame, OPAO



Regal and Genteq are trademarks of Regal Rexnord Corporation or one of its affiliated companies.
©2025 Regal Rexnord Corporation, All Rights Reserved. MC017097E





Nameplate Specifications

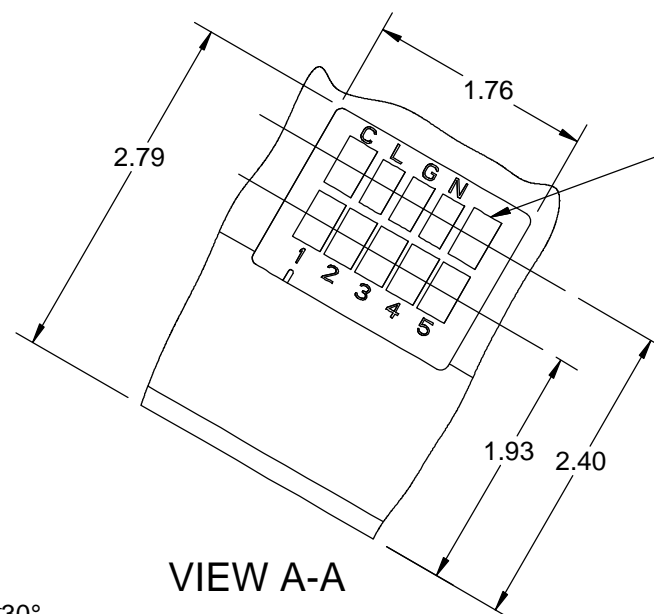
Phase	1	Output HP	3/4 Hp
Output KW	0.56 kW	Voltage	460 V
Speed	1075 rpm	Service Factor	1
Frame	48	Enclosure	Open Air Over
Thermal Protection	Automatic	Ambient Temperature	40 °C
Frequency	60/50 Hz	Current	3.1 A
Duty	Continuous Air Over	Insulation Class	B
UL	Recognized	CSA	N
CE	N	Number of Speeds	1

Technical Specifications

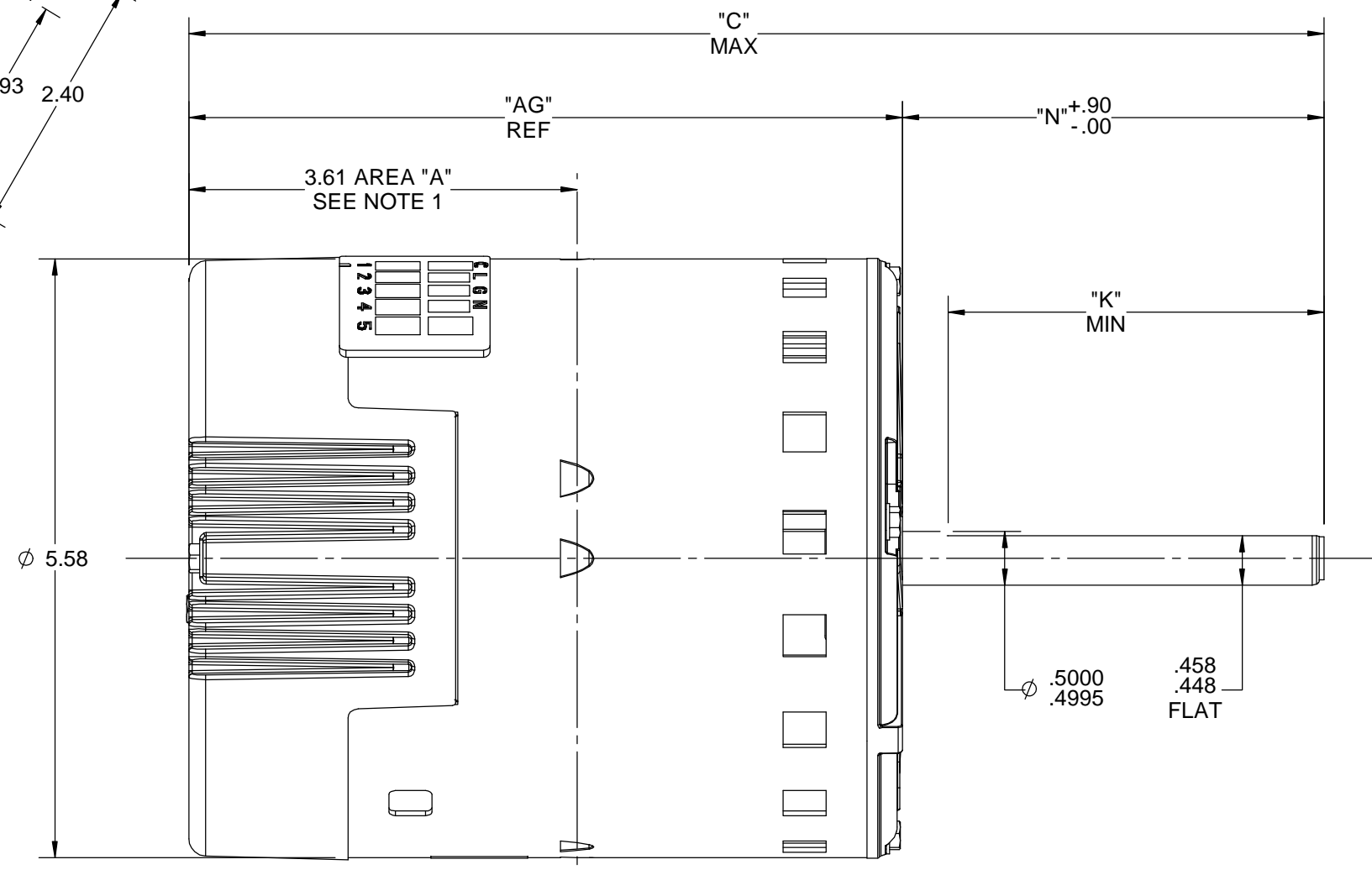
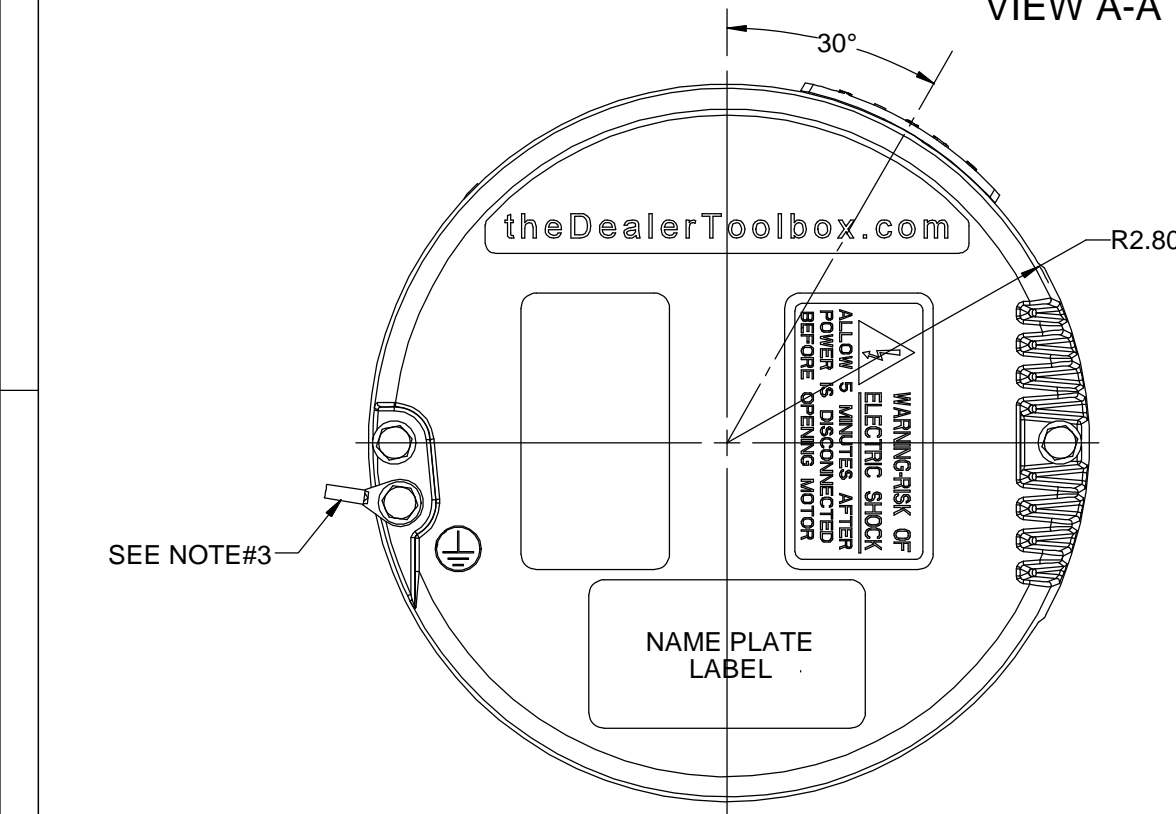
Electrical Type	Electronically Commutated Motor	Poles	12
Rotation	Counterclockwise/Clockwise	Mounting	Round
Motor Orientation	Vsd	Drive End Bearing	Ball
Opp Drive End Bearing	Ball	Frame Material	Rolled Steel
Shaft Type	Flat	Overall Length	11.28 in
Frame Length	5.57 in	Shaft Diameter	0.500 in
Shaft Extension	3.92 in		
Outline Drawing	5SME39NXL5033	Connection Drawing	24X350114

This is an uncontrolled document once printed or downloaded and is subject to change without notice. Date Created:08/06/2025

CONNECTOR ID	DESCRIPTION	OPERATING MODE
C	SIGNAL COMMON	SIGNAL COMMON
L	LINE 1	LINE 1
G	GROUND	GROUND
N	NEUTRAL	NEUTRAL
1	TAP 1	LOW (PWM)
2	TAP 2	MID-LOW
3	TAP 3	MID
4	TAP 4	MID-HIGH
5	TAP 5	HIGH



SEE TABLE FOR CONNECTION DEFINITIONS



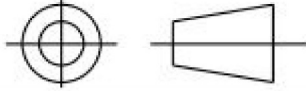
- NOTE:
- BELLY BAND MUST NOT BE PLACED WITHIN AREA "A"
 - APPROXIMATE WEIGHT IS 16.06 LB
 - OPTIONAL EXTERNAL #8 SELF TAPPING GROUND SCREW AND TERMINAL MAY BE PROVIDED BY CUSTOMER AT LOCATION SHOWN.

NAMEPLATE DATA	
MODEL	5SME39NXL5033
CUSTOMER	DEF PUR
CUSTOMER P/N	STOCK NO 6407
H.P	3/4
RPM	1075
VOLTS	460
HZ	60/50
AMPS	3.1
ROTATION	CCW/CW
MTG POSITION	HOR/VSD

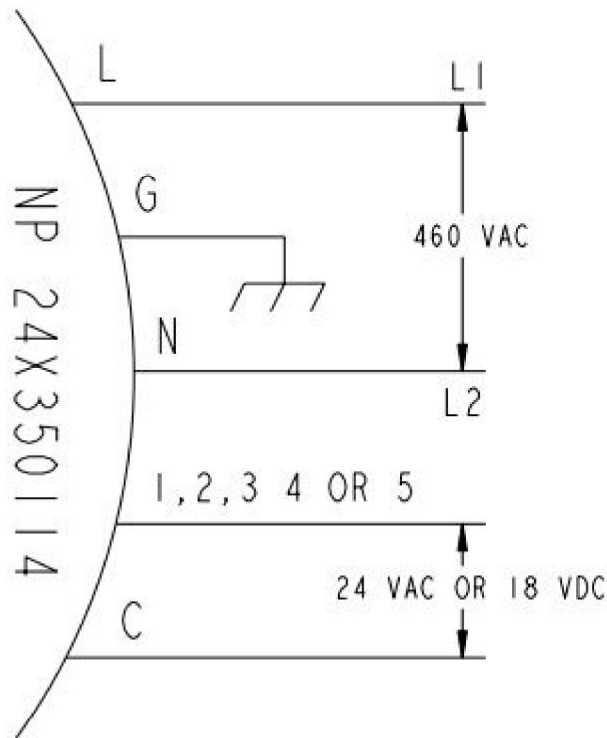
DRAWING REVISION H	REVISION BY KEP	DATE 12/26/2017
ECO ECO-0129397	APPROVED BY ANDREA	DATE 12/26/2017
ECO DESCRIPTION UPDATED AS PER ECO REQUEST		
<small>COPYRIGHT REGAL BELOIT AMERICA, INC. ALL RIGHTS RESERVED. PROPRIETARY AND CONFIDENTIAL INFORMATION - THIS DOCUMENT IS THE PROPERTY OF REGAL BELOIT AMERICA, INC. ("OWNER") AND CONTAINS OWNER'S PROPRIETARY INFORMATION. ANY PERSON, CORPORATION OR OTHER FIRM RECEIVING IT IS DEEMED, BY RECEIVING IT, TO AGREE THAT IT, AND/OR ANY PART OF IT, SHALL NOT BE DISCLOSED TO ANY PERSON, CORPORATION OR OTHER ENTITY, DUPLICATED, AND/OR USED, EXCEPT AS EXPRESSLY APPROVED IN WRITING IN ADVANCE BY OWNER. THIS DOCUMENT SHALL BE RETURNED TO OWNER UPON REQUEST. IT MAY BE SUBJECT TO CERTAIN RESTRICTIONS UNDER APPLICABLE EXPORT CONTROL LAWS AND REGULATIONS.</small>		


DRAWN BY VNR	Regal Beloit America, Inc.
DATE 09/02/2013	
APPROVED BY SBD	DESCRIPTION OUTLINE Evergreen 460V
DATE 09/02/2013	MATERIAL
REFERENCE	PROCESS/FINISH
THIRD ANGLE PROJECTION	SIZE B
	DRAWING NUMBER 5SME39NXL5033
	SHEET 1 OF 1

11.28	3.92	3.50	7.36
C	N	K	AG

SHEET —	REV 0	24X350114	RBC PROPRIETARY AND CONFIDENTIAL INFORMATION This document is the property of REGAL-BELOIT CORPORATION ("RBC") including its subsidiaries and divisions and contains proprietary information of RBC. This document is loaned on the express condition that neither it nor the information contained therein shall be disclosed to others without the express written consent of RBC, and that the information shall be used by the recipient only as approved expressly by RBC. This document shall be returned to RBC upon its request. This document may be subject to certain restrictions under U.S. export control laws and regulations.								
			REVISIONS <table border="1"> <thead> <tr> <th>REV.</th> <th>DESCRIPTION</th> <th>DATE</th> <th>APPROVED</th> </tr> </thead> <tbody> <tr> <td> </td> <td> </td> <td> </td> <td> </td> </tr> </tbody> </table>				REV.	DESCRIPTION	DATE	APPROVED	
REV.	DESCRIPTION	DATE	APPROVED								
THIRD ANGLE PROJECTION 											

460V UNIT CONNECTION



FOR ADDITIONAL INFO REFER TO:	SIGNATURES	DATE	 REGAL-BELOIT CORPORATION
APPLIED PRACTICES	MODEL		
DIMENSIONS ARE IN INCHES	DETAIL		TITLE NAME PLATE CONNECTION DIAGRAM FMF X13 - 460V MODELS
TOLERANCE ON: 1 PL DECIMALS ± 0.1 2 PL DECIMALS ± 0.01 3 PL DECIMALS ± 0.005 ANGLES ± 0.5 FRACTIONS ±	CHECKED Prashant.B	2/04/2010	
	ENGRG		
	MFG		
	QUALITY		
FINISH ✓	ISSUED Prashant.B	2/04/2010	SIZE DRAWING A
MATERIAL	SOLID MODEL:		SCALE: SHEET 1 of 1
			24X350114 REV 0