

# PRODUCT INFORMATION PACKET



Model No: 6505V  
Catalog No: 6505V

EVERGREEN® VS Fan and Blower Motor, 1/2 HP, 1 Ph, 60/50 Hz, 120/240 V, 1050 RPM, 1 Speed, 48 Frame, OPAO



Regal and Genteq are trademarks of Regal Rexnord Corporation or one of its affiliated companies.  
©2025 Regal Rexnord Corporation, All Rights Reserved. MC017097E





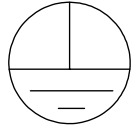
**Nameplate Specifications**

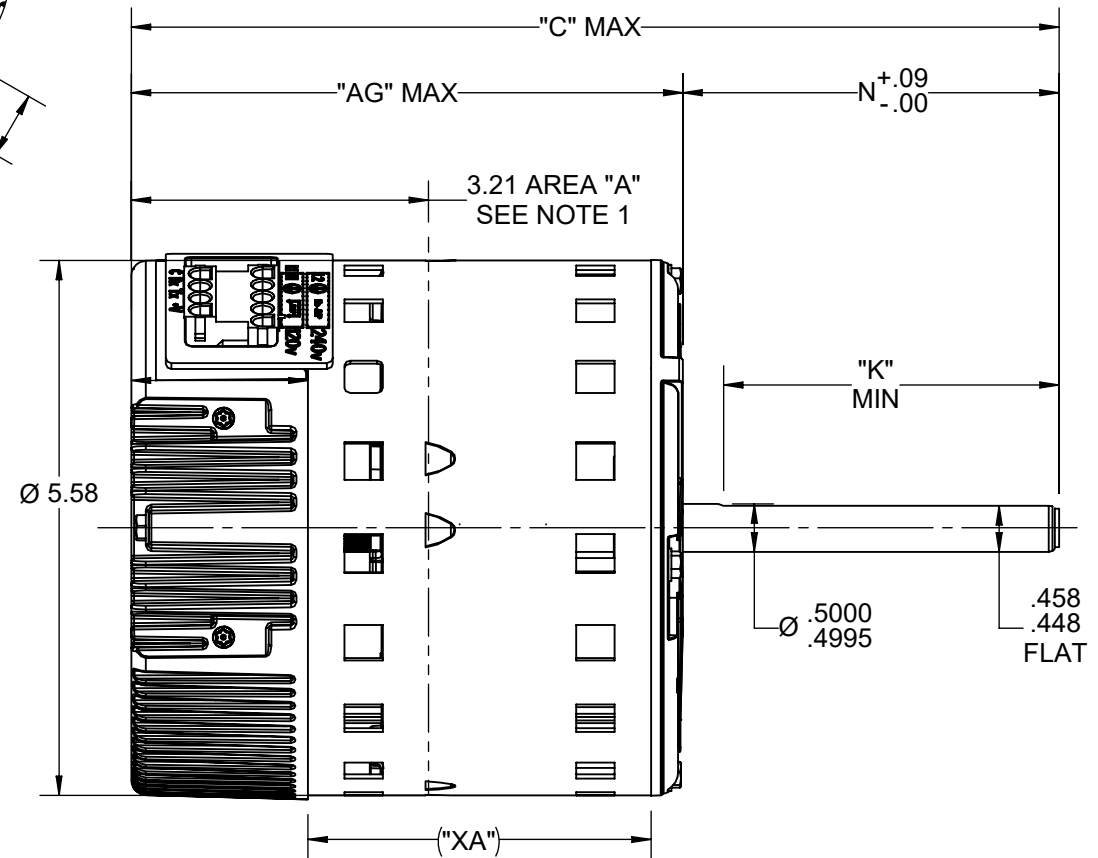
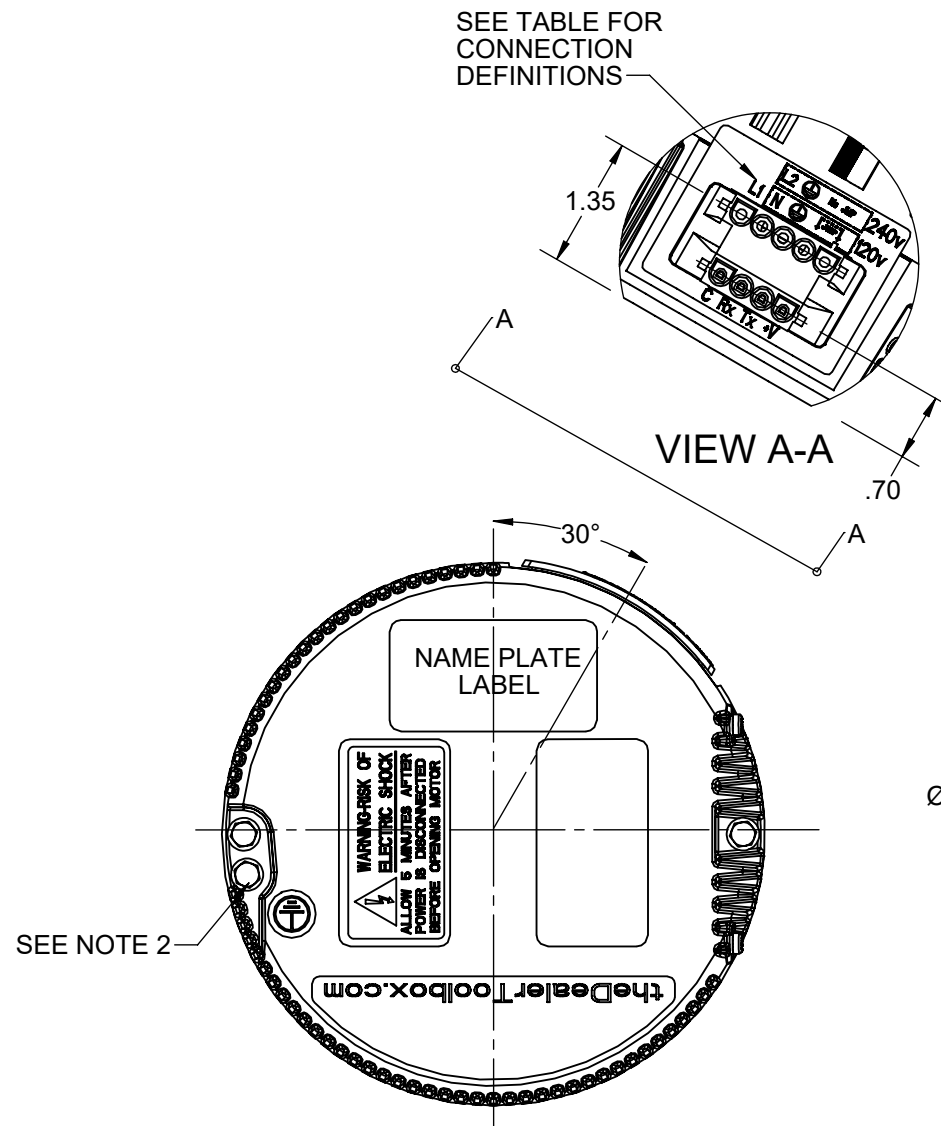
Phase	1	Output HP	1/2 Hp
Output KW	0.37 kW	Voltage	120/240 V
Speed	1050 rpm	Service Factor	1
Frame	48	Enclosure	Open Air Over
Thermal Protection	Thermally Protected	Ambient Temperature	40 °C
Frequency	60/50 Hz	Current	7.7/4.3 A
Duty	Continuous Air Over	Insulation Class	B
UL	No	CSA	N
CE	Y	Number of Speeds	1

**Technical Specifications**

Electrical Type	Electronically Commutated Motor	Poles	12
Rotation	Counterclockwise/Clockwise	Mounting	Round
Motor Orientation	Vsd	Drive End Bearing	Ball
Opp Drive End Bearing	Ball	Frame Material	Rolled Steel
Shaft Type	Flat	Overall Length	11.21 in
Frame Length	4.07 in	Shaft Diameter	0.500 in
Shaft Extension	5.00 in		
Connection Drawing	N/R	Outline Drawing	5SME39HXL3224

This is an uncontrolled document once printed or downloaded and is subject to change without notice. Date Created:06/18/2025

CONNECTOR ID	DESCRIPTION
+V	12V INPUT
Tx	SERIAL DATA OUTPUT
Rx	SERIAL DATA INPUT
C	COMMON
JMP	JUMPER APPLICATION FOR 120VAC LINE INPUT ONLY SEE NOTE 4
	GROUND
N	AC LINE
L1	AC LINE



NOTE - 1

- FOR VUI MOTOR (5SME39HXL3224A), USE #CPN 6505VUI
- FOR VS MOTOR (5SME39HXL3224), USE #CPN 6505V

NAMEPLATE DATA	
MODEL	SEE NOTE - 1
CPN/STOCK NO	SEE NOTE - 1
HP	1/2
RPM	1050
VOLTS	120/240
HZ	60/50
AMPS	7.7/4.3
ROTATION	CCW/CW
MTG. POSITION	VSD

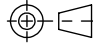
VENTILATION SYSTEM	
SHELL VENTS	OPEN
ENDSHIELD (LE)	NA
ENDSHIELD (OLE)	CLOSED

NOTES:


- BELLY BAND MUST BE PLACED WITHIN AREA "A" ONLY
- OPTIONAL EXTERNAL #8 SELF TAPPING GROUND SCREW AND TERMINAL MAY BE PROVIDED BY CUSTOMER AT LOCATION SHOWN.
- SUGGESTED MATING CONNECTORS:  
5 PIN CONNECTOR - TYCO 350809-1  
4 PIN CONNECTOR - TYCO 350779-1  
SOCKET (TIN) - FOR .060-.130 WIRE INS. DIA RANGE - TYCO 350536-1  
FOR .130-.200 WIRE INS. DIA RANGE - TYCO 350537-1
- WARNING: APPLYING 240VAC LINE INPUT WITH JUMPER APPLIED WILL PERMANENTLY DAMAGE UNIT.

DRAWING REVISION E	REVISION BY SAI KIRAN.R	REV DATE/© DATE 8/7/2023
REQUEST NUMBER ECR-0227061	APPROVED BY DON.S	DATE 8/7/2023
REQUEST NUMBER DESCRIPTION UPDATED AS PER ECR-0227061		
<small>COPYRIGHT (PER REVISION DATE) REGAL BELOIT AMERICA, INC. ALL RIGHTS RESERVED. PROPRIETARY AND CONFIDENTIAL INFORMATION - THIS DOCUMENT IS THE PROPERTY OF REGAL BELOIT AMERICA, INC. ("OWNER") AND CONTAINS OWNER'S PROPRIETARY INFORMATION. ANY PERSON, CORPORATION OR OTHER FIRM RECEIVING IT IS DEEMED, BY RECEIVING IT, TO AGREE THAT IT, AND/OR ANY PART OF IT, SHALL NOT BE DISCLOSED TO ANY PERSON, CORPORATION OR OTHER ENTITY, DUPLICATED, AND/OR USED, EXCEPT AS EXPRESSLY APPROVED IN WRITING IN ADVANCE BY OWNER. THIS DOCUMENT SHALL BE RETURNED TO OWNER UPON REQUEST. IT MAY BE SUBJECT TO CERTAIN RESTRICTIONS UNDER APPLICABLE EXPORT CONTROL LAWS AND REGULATIONS.</small>		

PRIMARY DIMENSIONS ARE INCH  
mm DIMENSIONS IN [BRACKETS]  
ARE FOR REFERENCE ONLY

DRAWN BY KEP	
DATE 11/22/2017	
APPROVED BY ANDREA	
DATE 11/22/2017	
REFERENCE -	

11.21	5.00	4.50	4.07	6.21
"C"	"N"	"K"	"XA"	"AG"

		Regal Beloit America, Inc.		
DESCRIPTION		OUTLINE		
DATE		ECM EVERGREEN VUI		
MATERIAL		PROCESS/FINISH		
SIZE B	DRAWING NUMBER 5SME39HXL3224	SHEET 1 OF 1		