

PRODUCT INFORMATION PACKET



Model No: 733A
Catalog No: 733A

Unit Heater Motor, 1/2 HP, 1 Ph, 60 Hz, 115/208-230 V, 1140 RPM, 1 Speed, 48 Frame, TEAO



Regal and Century are trademarks of Regal Rexnord Corporation or one of its affiliated companies.
©2025 Regal Rexnord Corporation, All Rights Reserved. MC017097E





Nameplate Specifications

Phase	1	Output HP	1/2 Hp
Output KW	0.37 kW	Voltage	115/208-230 V
Speed	1140 rpm	Service Factor	1
Frame	F48Y	Enclosure	Totally Enclosed Air Over
Thermal Protection	Automatic	Ambient Temperature	60 °C
Frequency	60 Hz	Current	5.6/2.8 A
Duty	Air Over	Insulation Class	B
UL	Recognized	CSA	Y
CE	N	Number of Speeds	1

Technical Specifications

Electrical Type	Permanent Split Capacitor	Starting Method	Across The Line
Poles	6	Rotation	Reversible
Mounting	Resilient Base	Motor Orientation	Any
Drive End Bearing	Ball	Opp Drive End Bearing	Ball
Frame Material	Rolled Steel	Shaft Type	Flat
Overall Length	12.78 in	Frame Length	6.50 in
Shaft Diameter	0.500 in	Shaft Extension	5.03 in
Connection Drawing	1011717-001	Outline Drawing	733A-S01

This is an uncontrolled document once printed or downloaded and is subject to change without notice. Date Created:02/24/2025

GENERAL INFORMATION:

SHAFT RUNOUT: .001 [.025] T.I.R. PER INCH LENGTH OF EXTENSION

BEARINGS: BALL

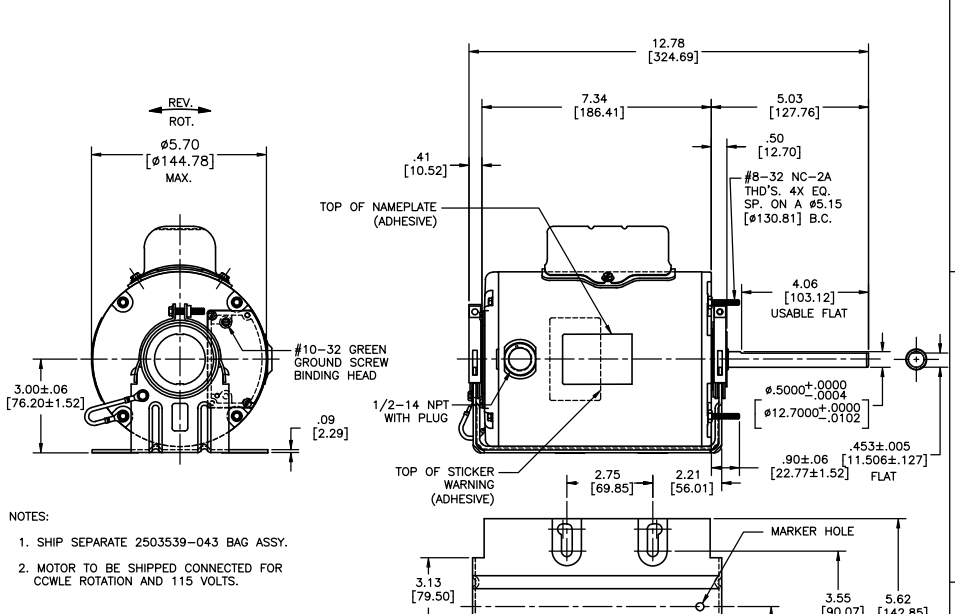
MOUNTING POSITION: ALL ANGLE

ELECTRICAL DATA:

OVERLOAD PROTECTOR: AUTOMATIC RESET (SESATA 7AM 036)

LEADS: NO. 18 GA., .03 [.8] THK. XLP 125°C INSUL.

GROUND LEAD: NO. 18 GA., .03 [.8] THK., GREEN/YELLOW INSUL.



- NOTES:
- SHIP SEPARATE 2503539-043 BAG ASSY.
 - MOTOR TO BE SHIPPED CONNECTED FOR COWLE ROTATION AND 115 VOLTS.

GREEN/YELLOW (GROUND)	CONNECTED TO BASE	#10 EYELET
RED	CONNECTED TO CAPACITOR	.25 [6.35] FLAG
RED	CONNECTED TO CAPACITOR	.25 [6.35] FLAG
YELLOW	5.0/6.0 [127/152]	.25 [6.35] FLAG
BLACK	5.0/6.0 [127/152]	.25 [6.35] FLAG
ORANGE	5.0/6.0 [127/152]	.25 [6.35] FLAG
WHITE	5.0/6.0 [127/152]	.25 [6.35] FLAG
RED	5.0/6.0 [127/152]	.25 [6.35] FLAG
BROWN	5.0/6.0 [127/152]	.25 [6.35] FLAG
YELLOW/BLACK	5.0/6.0 [127/152]	.25 [6.35] FLAG
COLOR	LENGTH	TERMINAL OR STRIP LENGTH

NAMEPLATE DATA:	EXTERNAL CONNECTION DIAGRAM
MODEL NO.: F48Y59A01	YEL/BLK → L2
CUST. P/N: 733A	BROWN → B
HP: 1/2	WHITE → A
ROT.: REVERSIBLE	ORANGE → A
RPM: 1140	RED → A
TYPE: UF	BLACK → L1
FRAME: 48Y	YELLOW → HIGH VOLTS
VOLTS: 115/208-230	
PH: 1	
AMPS: 5.6/2.8	YEL/BLK → L2
HZ: 60	BROWN → B
INS.: B	ORANGE → A
AMB.: 60° C	RED → A
DUTY: AIR OVER	BLACK → L1
CAP.: 10 MFD/370 V	WHITE → L1
ENCL: ENCLOSED	YELLOW → LOW VOLTS
UL LOGO	SHOWN FOR COWLE ROTATION, FOR COWLE INTERCHANGE RED AND BLACK LEADS
CSA LOGO	614131-345
THERMALLY PROTECTED	

PERFORMANCE CURVE NO.	TORQUE @ 1140 RPM (25°C)	APPROVED SAMPLE	UL COMPONENT	CSA
			FILE #	CCN #
			FILE #	CLASS #
C32632	34.6 OZ. FT.	0600700A	E46412	PRGY2
			LR43341	4211-01

LEAD DATA		DRAWING REVISION		DATE	
REVISED BY	DATE	REVISION	DATE	BY	DATE
ABHI	02-13-2025	1	02-13-2025	ABHI	02-13-2025
TSO	02-13-2025	2	02-13-2025	KEP	02-13-2025
FOR-0240647					
ECOT DESCRIPTION					
REMOVED CONN LABEL					

PROPRIETARY AND CONFIDENTIAL INFORMATION - THE DOCUMENT IS THE PROPERTY OF REGAL-BELOIT AMERICA, INC. AND IS LOANED TO YOU FOR YOUR USE ONLY. IT IS NOT TO BE REPRODUCED, COPIED, OR TRANSMITTED IN ANY MANNER WITHOUT THE WRITTEN PERMISSION OF REGAL-BELOIT AMERICA, INC. ANY UNAUTHORIZED USE, REPRODUCTION, OR DISSEMINATION OF THIS DOCUMENT IS STRICTLY PROHIBITED. REGAL-BELOIT AMERICA, INC. SHALL NOT BE LIABLE FOR ANY DAMAGES, INCLUDING CONSEQUENTIAL DAMAGES, ARISING FROM THE USE OF THIS DOCUMENT. REGAL-BELOIT AMERICA, INC. SHALL NOT BE LIABLE FOR ANY DAMAGES, INCLUDING CONSEQUENTIAL DAMAGES, ARISING FROM THE USE OF THIS DOCUMENT.

DRAWN BY: CASSIENI

DATE: 01-11-2007

APPROVED BY: TR

DATE: 02-25-2008

REFERENCE: -

THIRD ANGLE PROJECTION

ENCLOSURE

Regal Beloit America, Inc.

DESCRIPTION: MODEL-RFHP-48FR OUTLINE

MATERIAL: -

PROCESS/FINISH: -



SIZE TOWNSHIP: C

733A

SHEET 1

CROSS REFERENCE FOR PARTS
MANUFACTURED FOR STOCK

PART NUMBER	DRAWING NUMBER	SAME AS PART NUMBER	SAME AS DRAWING NUMBER
2B300R	10 11717	2B300R DWG	1685205

REV	ECN #	REMARKS	CASTING	Unless Otherwise Specified Dimensions are in Inches	  EPT GEARING & COMPONENTS <small>Maysville, KY 41056</small> <small>Confidential Property of EPT Gearing & Components</small>	DWN: PJF DATE: 09/06/95	TITLE "B" SHEAVE 2B300R		
B	08-13897	UPDATED & REDRAWN IN SE	---	TOLERANCES Dim X.X ± .030 Dim X.XX ± .015 Dim X.XXX ± .005 Angular Dimensions ± .5° Surface Finish 125 ✓		CHK'D: BTA DATE: 09/06/95	FRAME -	TYPE -	SHEET 1 OF 1
			MATERIAL ---		REV: SPK DATE: 12/24/08	DRAWING NUMBER 1011717		REV B	
			EST. WGT. (LBS.) ---		DO NOT SCALE DRAWING				
			HEAT TREAT ---						
			FINISH COATING ---	- Dimensions in () are for reference purposes only - Remove All Flashing					

