

# PRODUCT INFORMATION PACKET



Model No: 745  
Catalog No: 745

OEM Replacement Motor, 1/6, 1/8, 1/10, 1/12 HP, 1 Ph, 60 Hz, 120 V, 1550 RPM, 4 Speed, 42 Frame,  
OAO



Regal and Century are trademarks of Regal Rexnord Corporation or one of its affiliated companies.  
©2022 Regal Rexnord Corporation, All Rights Reserved. MC017097E





**Nameplate Specifications**

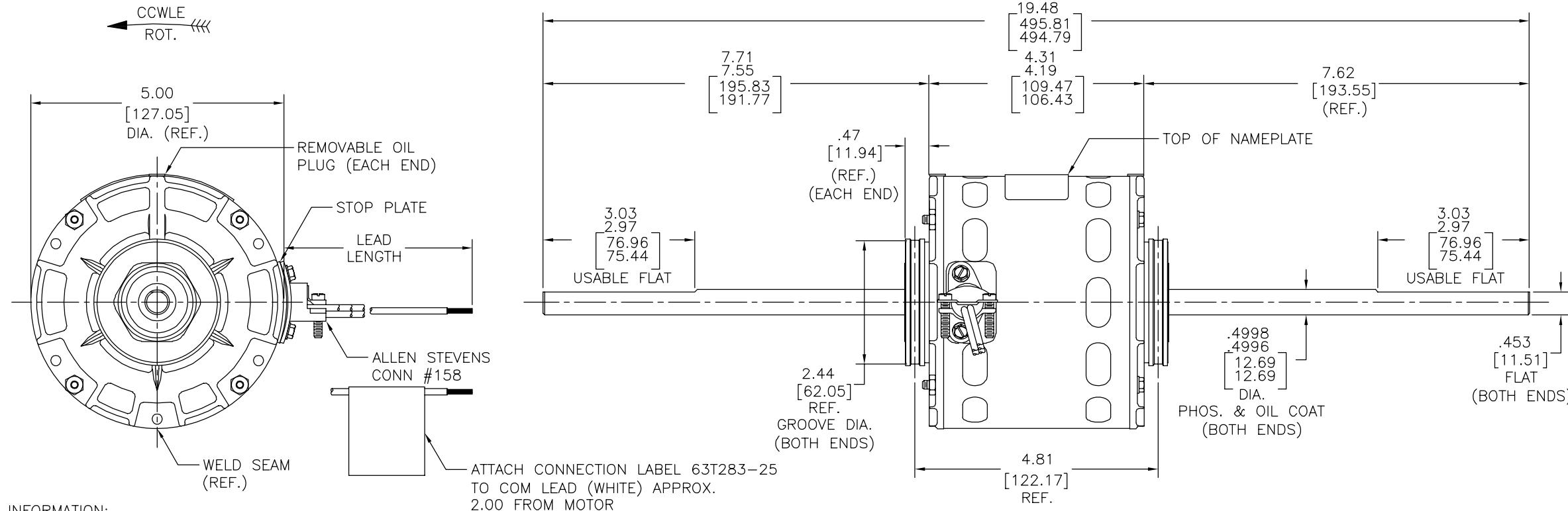
Output HP	1/6, 1/8, 1/10, 1/12 Hp	Output KW	0.13 kW
Frequency	60 Hz	Voltage	120 V
Current	3.3 A	Speed	1550 rpm
Service Factor	1	Phase	1
Duty	Continuous Air Over	Insulation Class	A
Frame	42	Enclosure	Open Air Over
Thermal Protection	Automatic	Ambient Temperature	40 °C
UL	Recognized	CSA	Y
CE	N	Number of Speeds	4

**Technical Specifications**

Electrical Type	Shaded Pole	Starting Method	Across The Line
Poles	4	Rotation	Counterclockwise Lead End
Mounting	Resilient Rings	Motor Orientation	Horizontal
Drive End Bearing	Sleeve	Opp Drive End Bearing	Sleeve
Frame Material	Rolled Steel	Shaft Type	Flat
Overall Length	19.50 in	Frame Length	3.67 in
Shaft Diameter	0.500 in	Shaft Extension	7 5/8 in
Outline Drawing	DA2F7087-S01		

This is an uncontrolled document once printed or downloaded and is subject to change without notice. Date Created:11/29/2022

REV	ECO	REV BY	DATE	APPD	DATE
G	0029014	M.JOSEFOVSKY	10-17-2012	D.SCHUBERT	10-17-2012



GENERAL INFORMATION:

SHAFT RUNOUT: .001 [.025] T.I.R. PER INCH LENGTH OF EXTENSION  
 END PLAY: .005 TO .040 [.13 TO 1.02]  
 BEARINGS: SLEEVE  
 MOUNTING POSITION: HORIZONTAL

ELECTRICAL DATA:

OVERLOAD PROTECTOR: AUTOMATIC RESET (T.I. 7AM 093)  
 LINE LEADS: NO. 18 GA., .03 [.76] THK. XLP 125°C INSUL.

MAIN FRAME - OLE	OPEN
END FRAME - OLE	OPEN
MAIN FRAME - LE	OPEN
END FRAME - LE	OPEN
ENCLOSURE	

NAMEPLATE DATA:

**Century** Tipp City, OH  
 THERMALLY PROTECTED **SP** **RU**  
 SER. DATE & PO# PLT LTR MOD DA2F087N# STK# 745  
 VOLTS 120 HZ 60 AMPS  
 RPM 1550 SP 4 PH 1 CAP  
 INS CL AMB °C HP CONT AO ← ROTATION →  
 BRG SLV BLK-HI 5.0 A 1/6 HP ASSEMBLED IN MEXICO  
 BR-MED HI 3.3 A 1/8 HP  
 BU-MED LO 2.9 A 1/10 HP RD-LO 2.4 A 1/12 HP  
 WH-COM

PREFORMANCE CURVE NO.	TORQUE @ 1550 RPM (25°C)	APPROVED SAMPLE	UL COMPONENT FILE#	GUIDE#	CSA FILE#	GUIDE#
-	150.5 OZ. IN.	S-4867E	-	-	-	-

GEOMETRIC CHARACTERISTICS & SYMBOLS  
 ▮ FLATNESS  
 - STRAIGHTNESS  
 ∠ ANGULARITY  
 ⊥ PERPENDICULARITY (SQUARENESS)  
 // PARALLELISM  
 ○ ROUNDNESS (CIRCULARITY)  
 ∅ CYLINDRICITY  
 △ PROFILE OF ANY SURFACE  
 ∩ PROFILE OF ANY LINE  
 ↗ RUNOUT  
 ⊕ TRUE POSITION  
 ⊙ CONCENTRICITY  
 = SYMMETRY

UNLESS OTHERWISE SPECIFIED DIM. TOLERANCES ARE AS FOLLOWS:  
 INCH X XX XXX XXXX  
 mm ±0.5 ±0.13 ±0.013  
 ANG. ±.50 DEG  
 REMOVE BURRS & BREAK SHARP EDGES:  
 INCH .003-.015 mm 0.1-0.4  
 CORNER FILLETS TO:  
 INCH .020 mm 0.5  
 MACHINE SURFACES:  
 INCH 125 mm 3.2

DR BY: TLB 04-30-1999  
 APPD: DRB 02-22-1999  
 EDS DATE 02-22-2008  
 FORMAT REV H

THIRD ANGLE PROJECTION  
 CONFIDENTIAL: THIS DRAWING AND ITS INFORMATION ARE THE EXCLUSIVE AND CONFIDENTIAL PROPERTY OF REGAL-BELOIT CORPORATION AND ARE NOT TO BE DISCLOSED, DUPLICATED, DISTRIBUTED OR OTHERWISE USED WITHOUT THE WRITTEN CONSENT OF REGAL-BELOIT CORPORATION.  
 -ALL RIGHTS RESERVED.

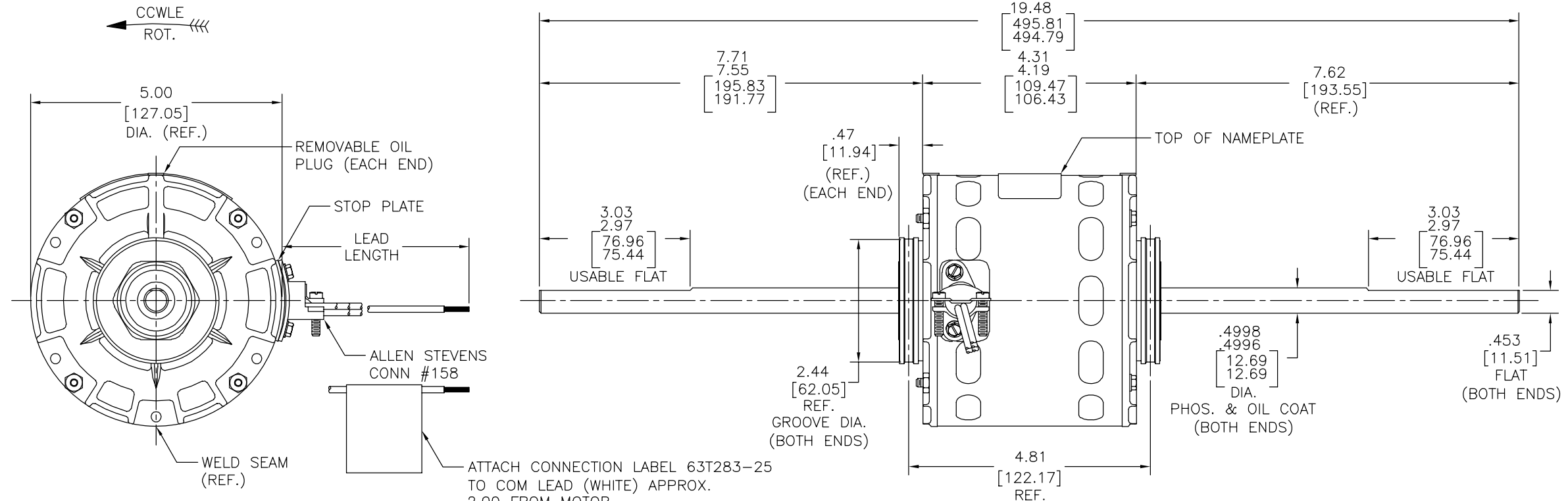
COLOR CODE	
COMM	WHITE
HIGH	BLACK
MED HI	BROWN
MED LO	BLUE
LOW	RED

RED	29.0/31.0 [736.60/787.40]	.50 [12.7] SKIN
BLUE	29.0/31.0 [736.60/787.40]	.50 [12.7] SKIN
BROWN	29.0/31.0 [736.60/787.40]	.50 [12.7] SKIN
BLACK	29.0/31.0 [736.60/787.40]	.50 [12.7] SKIN
WHITE	29.0/31.0 [736.60/787.40]	.50 [12.7] SKIN
COLOR	LENGTH	TERMINAL OR STRIP LENGTH

**REGAL** REGAL-BELOIT CORPORATION

DESCRIPTION: OUTLINE AFTERMARKET STK #745  
 SIZE: C DWG NO: DA2F7087  
 SCALE: NONE SHEET: 1

REVISION:	ECO	REVISADO POR:	FECHA:	APROBADO POR:	FECHA:
G	0029014	M.JOSEFOVSKY	10-17-2012	D.SCHUBERT	10-17-2012



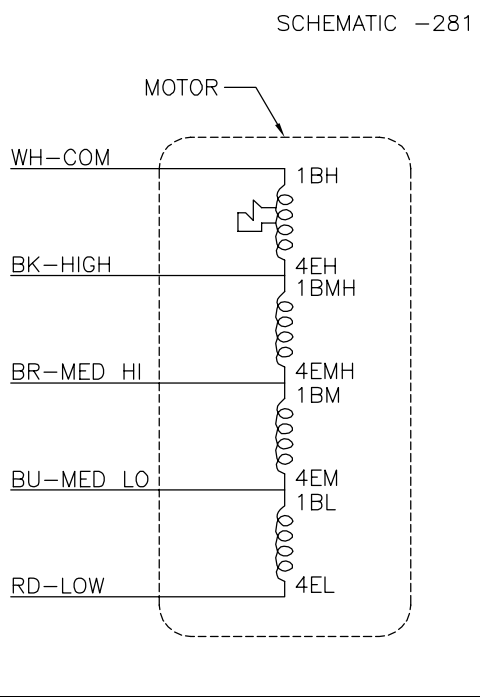
GENERAL INFORMATION:

SHAFT RUNOUT: .001 [.025] T.I.R. PER INCH LENGTH OF EXTENSION  
 END PLAY: .005 TO .040 [.13 TO 1.02]  
 BEARINGS: SLEEVE  
 MOUNTING POSITION: HORIZONTAL

ELECTRICAL DATA:

OVERLOAD PROTECTOR: AUTOMATIC RESET (T.I. 7AM 093)  
 LINE LEADS: NO. 18 GA., .03 [.76] THK. XLP 125°C INSUL.

MAIN FRAME - OLE	OPEN
END FRAME - OLE	OPEN
MAIN FRAME - LE	OPEN
END FRAME - LE	OPEN
ENCLOSURE	



NAMEPLATE DATA:

**Century** Tipp City, OH THERMALLY PROTECTED

SER. DATE & PO# PLT LTR MOD DA2F087N# STK# 745

VOLTS 120 HZ 60 AMPS

RPM 1550 SP 4 PH 1 CAP

INS CL AMB °C HP CONT AO ← ROTATION →

BRG SLV BLK-HI 5.0 A 1/6 HP ASSEMBLED IN MEXICO

BR-MED HI 3.3 A 1/8 HP

BU-MED LO 2.9 A 1/10 HP RD-LO 2.4 A 1/12 HP

WH-COM

PREFORMANCE CURVE NO.	TORQUE @ 1550 RPM (25°C)	APPROVED SAMPLE	UL COMPONENT FILE#	GUIDE#	CSA FILE#	GUIDE#
-	150.5 OZ. IN.	S-4867E	-	-	-	-

COLOR CODE	
COMM	WHITE
HIGH	BLACK
MED HI	BROWN
MED LO	BLUE
LOW	RED

RED	29.0/31.0 [736.60/787.40]	.50 [12.7] SKIN
BLUE	29.0/31.0 [736.60/787.40]	.50 [12.7] SKIN
BROWN	29.0/31.0 [736.60/787.40]	.50 [12.7] SKIN
BLACK	29.0/31.0 [736.60/787.40]	.50 [12.7] SKIN
WHITE	29.0/31.0 [736.60/787.40]	.50 [12.7] SKIN
COLOR	LENGTH	TERMINAL OR STRIP LENGTH

LEAD DATA

CARACTERISTICAS DE GEOMETRIA Y SIMBOLOS

- PLANICIDAD
- RECTITUD
- ∠ ANGULARIDAD
- ⊥ PERPENDICULARIDAD (A ESCUADRA)
- // PARALELISMO
- REDONDEZ (CIRCULARIDAD)
- ⊘ CILINDRICIDAD
- △ PERFIL DE CUALQUIER SUPERFICIE
- ∧ PERFIL DE CUALQUIER LINEA
- ∠ VARIACION
- ⊕ POSICION REAL
- ⊙ CONCENTRICIDAD
- = SIMETRIA

A MENOS QUE SE ESPECIFIQUE DE OTRA MANERA, LAS TOLERANCIAS DE LAS DIMS; SON LAS SIGUIENTES:

PULG ±.1 ±.02 ±.005 ±.0005

mm ±0.5 ±0.13 ±0.013

ANG. ± 50 GRADOS

ELIMINAR REBABAS Y ORILLAS FILOSAS DEL BORDE.

PULG .003-.015 mm 0.1-0.4

FILETEAR ESQUINA: PULG .020 mm 0.5

MAQUINAR SUPERFICIES

PULG 125 mm 3.2

DIMS METRICAS MOSTRADAS [PARENTESIS]

ASME Y14.5M 1994

DIBUJADO POR: TLB 04-30-1999

APROBADO POR: DRB 02-22-1999

TERCER ANGULO DE PROYECCION

FECHA EDS: 02-22-2008

REV. FORMATO: H

CONFIDENCIAL: ESTE DIBUJO Y SU INFORMACION SON PROPIEDAD DE USO EXCLUSIVO Y CONFIDENCIAL DE REGAL-BELOIT CORPORATION. Y NO DEBERAN SER REVELADOS, DUPLICADOS, DISTRIBUIDOS O USARSE DE OTRA MANERA SIN EL CONSENTIMIENTO ESCRITO DE REGAL-BELOIT CORPORATION. -TODOS LOS DERECHOS RESERVADOS.

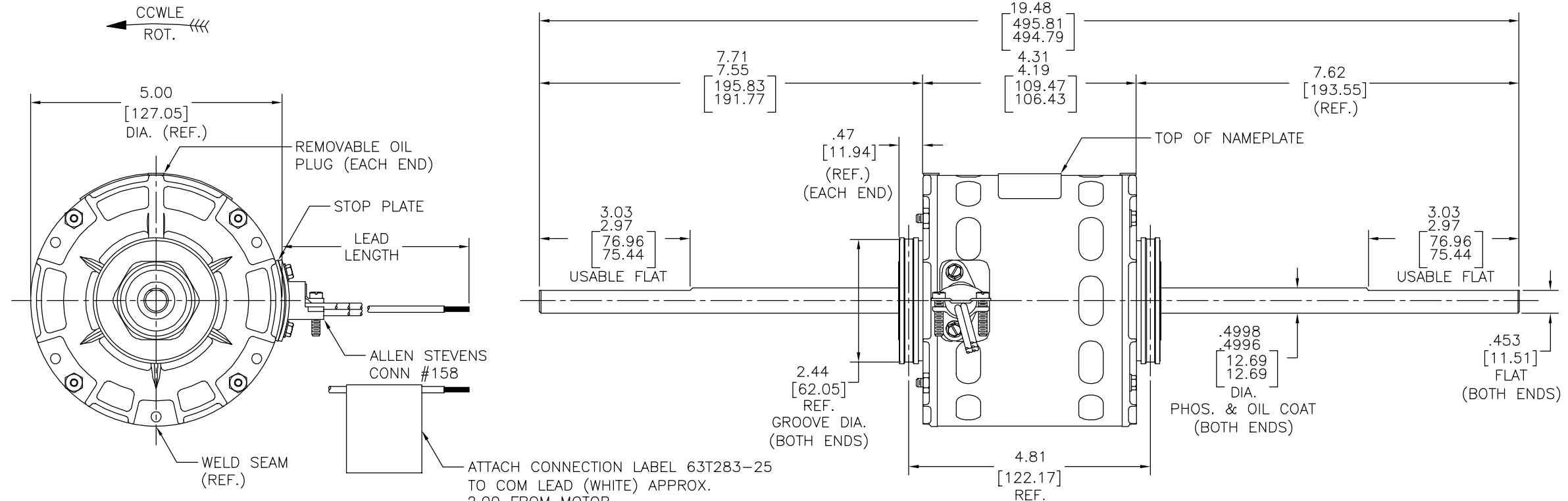
**REGAL REGAL-BELOIT CORPORATION**

DESCRIPCION: OUTLINE AFTERMARKET STK #745

TAMAÑO: C NUMERO DE DIBUJO: DA2F7087

ESCALA: NONE HOJA: 1

版本	ECO	编制	日期	批准	日期
G	0029014	M.JOSEFOVSKY	10-17-2012	D.SCHUBERT	10-17-2012



GENERAL INFORMATION:

SHAFT RUNOUT: .001 [.025] T.I.R. PER INCH LENGTH OF EXTENSION  
 END PLAY: .005 TO .040 [.13 TO 1.02]  
 BEARINGS: SLEEVE  
 MOUNTING POSITION: HORIZONTAL

ELECTRICAL DATA:

OVERLOAD PROTECTOR: AUTOMATIC RESET (T.I. 7AM 093)  
 LINE LEADS: NO. 18 GA., .03 [.76] THK. XLP 125°C INSUL.

MAIN FRAME - OLE	OPEN
END FRAME - OLE	OPEN
MAIN FRAME - LE	OPEN
END FRAME - LE	OPEN
ENCLOSURE	

NAMEPLATE DATA:

**Century** Tipp City, OH  
 THERMALLY PROTECTED

SER. DATE & PO# PLT LTR MOD DA2F087N# STK# 745  
 VOLTS 120 HZ 60 AMPS  
 RPM 1550 SP 4 PH 1 CAP  
 INS CL AMB °C HP CONT AO ← ROTATION →  
 BRG SLV BLK-HI 5.0 A 1/6 HP ASSEMBLED IN MEXICO  
 BR-MED HI 3.3 A 1/8 HP  
 BU-MED LO 2.9 A 1/10 HP RD-LO 2.4 A 1/12 HP  
 WH-COM

PERFORMANCE CURVE NO.	TORQUE @ 1550 RPM (25°C)	APPROVED SAMPLE	UL COMPONENT		CSA	
			FILE#	GUIDE#	FILE#	GUIDE#
-	150.5 OZ. IN.	S-4867E	-	-	-	-

形位公差  
 □ 平面度  
 — 直线度  
 < 倾斜度  
 ⊥ 垂直度  
 // 平行度  
 ○ 圆度  
 ⊙ 圆柱度  
 ⊖ 面轮廓度  
 ⊕ 线轮廓度  
 ⊖ 圆跳动  
 ⊕ 位置度  
 ⊙ 同轴度  
 ≡ 对称度

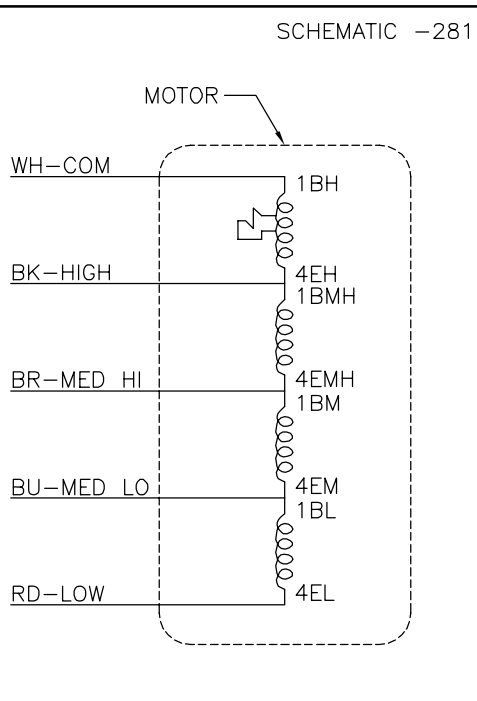
除另有注明  
 尺寸公差如下:  
 英寸 ±.1 ±.02 ±.005 ±.0005  
 毫米 ±0.5 ±0.13 ±0.013  
 角度 ±.50 度  
 清理毛刺和尖棱  
 英寸 .003-.015 毫米 0.1-0.4  
 内圆角  
 英寸 .020 毫米 0.5  
 表面粗糙度  
 英制 125 米制 3.2  
 米制尺寸显示在 [ ]

ASME Y14.5M 1994

COLOR CODE	
COMM	WHITE
HIGH	BLACK
MED HI	BROWN
MED LO	BLUE
LOW	RED

RED	29.0/31.0 [736.60/787.40]	.50 [12.7] SKIN
BLUE	29.0/31.0 [736.60/787.40]	.50 [12.7] SKIN
BROWN	29.0/31.0 [736.60/787.40]	.50 [12.7] SKIN
BLACK	29.0/31.0 [736.60/787.40]	.50 [12.7] SKIN
WHITE	29.0/31.0 [736.60/787.40]	.50 [12.7] SKIN
COLOR	LENGTH	TERMINAL OR STRIP LENGTH

LEAD DATA



绘图: TLB 04-30-1999  
 批准: DRB 02-22-1999  
 第三角投影

图纸格式发布日期 02-22-2008  
 图纸格式版本 H

机密: 本图纸及相关信息所有权归REGAL-BELOIT CORPORATION. 未经REGAL-BELOIT CORPORATION书面授权, 不得泄露、复制、传播或作其他用途。—版权所有

**REGAL** REGAL-BELOIT CORPORATION

名称: OUTLINE AFTERMARKET STK #745  
 图号: DA2F7087

比例: NONE 页号: 1