

# PRODUCT INFORMATION PACKET



Model No: 7RAB4010

Catalog No: 7RAB4010

1/10 HP Fan Coil / Room Air Conditioner Motor, 1050 RPM, 4 Speed, 277 Volts, 42 Frame, OAO

Fan Coil & Air Conditioner Motors



Regal and Century are trademarks of Regal Rexnord Corporation or one of its affiliated companies.  
©2022 Regal Rexnord Corporation, All Rights Reserved. MC017097E





**Nameplate Specifications**

Output HP	1/10 Hp	Output KW	0.07 kW
Frequency	60 Hz	Voltage	277 V
Current	1.6 A	Speed	1050 rpm
Service Factor	1	Phase	1
Duty	Air Over	Insulation Class	B
Frame	42Y	Enclosure	Open Air Over
Thermal Protection	Automatic	Ambient Temperature	40 °C
UL	Recognized	CSA	Y
CE	N	Number of Speeds	4

**Technical Specifications**

Electrical Type	Shaded Pole	Starting Method	Across The Line
Poles	6	Rotation	Counterclockwise Lead End
Mounting	Resilient Base	Motor Orientation	Horizontal
Drive End Bearing	Sleeve	Opp Drive End Bearing	Sleeve
Frame Material	Rolled Steel	Shaft Type	Flat
Overall Length	21.50 in	Shaft Diameter	0.500 in
Shaft Extension	8.8X.5X8.8 in		
Outline Drawing	11927-053-S01	Connection Drawing	630450

This is an uncontrolled document once printed or downloaded and is subject to change without notice. Date Created:02/07/2022

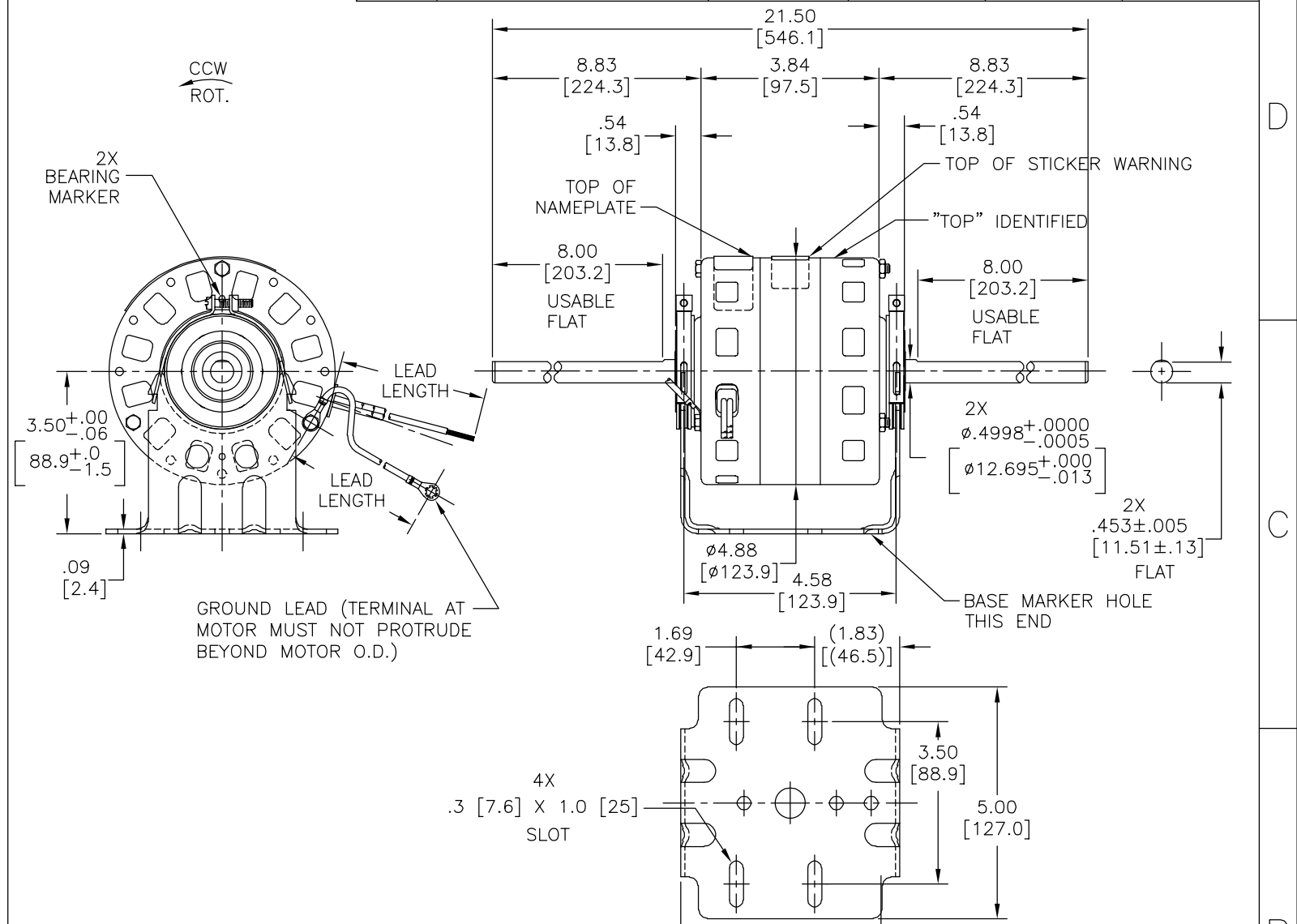
4 3 2 1

**GENERAL INFORMATION:**  
 SHAFT RUNOUT: .001 [.03] T.I.R. PER INCH LENGTH OF EXTENSION  
 END PLAY: .010 TO .063 [.25 TO 1.60]  
 BEARINGS: SLEEVE  
 MOUNTING POSITION: HORIZONTAL

**ELECTRICAL DATA:**  
 OVERLOAD PROTECTOR: AUTOMATIC RESET (T.I. 7AM 304)  
 LEADS: NO. 18 GA., .03 [.8] THK. XLP 125°C INSUL.  
 GROUND LEAD: NO. 18 GA., .03 [.8] THK. (GREEN) INSUL.

NOTE:  
 1. DISTRIBUTION PART NUMBER: 7RAB4010  
 GRAINGER PART NUMBER: 4UB83

REV	ECO	REV BY	DATE	APPD	DATE
E	0025528	E.SINECIO	04-24-2012	R.RASCON	04-24-2012



NAMEPLATE DATA:	EXTERNAL CONNECTION DIAGRAM
MODEL NO.: B42B02A01 CUST. P/N: [ ] HP: 1/10 ROT.: CCWLE RPM: 1050/4 SPD. TYPE: FE FRAME: 42YZ VOLTS: 277 PH: 1 AMPS: 1.6 HZ: 60 INS.: B AMB.: 40° C DUTY: AIR OVER CAP.: - UL LOGO CSA LOGO THERMALLY PROTECTED TYPE C	<p>SEE NOTE #1</p> <p>RED — LO</p> <p>ORN — M-LO</p> <p>BLU — M-HI</p> <p>BLK — HI</p> <p>PUR —</p> <p>LINE</p>

COLOR	LENGTH	TERMINAL OR STRIP LENGTH
GREEN (GROUND)	4.0/5.0 [102/127]	#10 EYELET
RED	26.0/28.0 [660/711]	.50 [12.7] SKIN
ORANGE	26.0/28.0 [660/711]	.50 [12.7] SKIN
BLUE	26.0/28.0 [660/711]	.50 [12.7] SKIN
BLACK	26.0/28.0 [660/711]	.50 [12.7] SKIN
PURPLE	26.0/28.0 [660/711]	.50 [12.7] SKIN

MAIN FRAME - OLE	OPEN
END FRAME - OLE	OPEN
MAIN FRAME - LE	OPEN
END FRAME - LE	OPEN

CUSTOMER	DISTRIBUTION SERVICE
----------	----------------------

PREFORMANCE CURVE NO.	TORQUE @1050 RPM (25°C)	APPROVED SAMPLE	UL COMPONENT FILE #	CCN #	CSA FILE #	CLASS #
C32393	11.2 OZ. FT.	0442718B	E46412	PRGY2	LR43341	4211-01

**GEOMETRIC CHARACTERISTICS & SYMBOLS**  
 □ FLATNESS  
 — STRAIGHTNESS  
 < ANGULARITY  
 ⊥ PERPENDICULARITY (SQUARENESS)  
 // PARALLELISM  
 ○ ROUNDNESS (CIRCULARITY)  
 ∅ CYLINDRICITY  
 △ PROFILE OF ANY SURFACE  
 ∇ PROFILE OF ANY LINE  
 ↗ RUNOUT  
 ⊕ TRUE POSITION  
 ⊙ CONCENTRICITY  
 = SYMMETRY  
 ASME Y14.5M 1994

REGAL-BELOIT CORPORATION (RBC) PROVIDES TECHNICAL ASSISTANCE TO OUR CUSTOMERS IN SEVERAL AREAS. SINCE RBC DOES NOT RECEIVE ALL DATA CONCERNING THE USE AND APPLICATION OF THE MOTOR, THE SUITABILITY OF THE MOTOR FOR THE APPLICATION MUST BE DETERMINED BY THE CUSTOMER.  
 DIMENSIONS WITHOUT TOLERANCES ARE FOR REFERENCE ONLY.

DR BY: S.RECKE 08-13-2004  
 APPD: G.PIATT 10-19-2004  
 THIRD ANGLE PROJECTION  
 EDS DATE 02-22-2008  
 FORMAT REV G  
 CONFIDENTIAL: THIS DRAWING AND ITS INFORMATION ARE THE EXCLUSIVE AND CONFIDENTIAL PROPERTY OF REGAL-BELOIT CORPORATION AND ARE NOT TO BE DISCLOSED, DUPLICATED, DISTRIBUTED OR OTHERWISE USED WITHOUT THE WRITTEN CONSENT OF REGAL-BELOIT CORPORATION. -ALL RIGHTS RESERVED.

**REGAL-BELOIT CORPORATION**  
 DESCRIPTION: MODEL-RFHP-42FR OUTLINE  
 SIZE: C DWG NO: 11927-053  
 SCALE: NONE SHEET: 1

4 3 2 1

4

3

2

1

INFORMACION GENERAL:

OSCILACION DE FLECHA: .001 [.03] L.T.I. EXTENSION DE LARGO POR PULGADA

JUEGO AXIAL: .010 TO .063 [.25 TO 1.60]

BALEROS: MANGA

POSICION DE MONTAGE: HORIZONTAL

INFORMACION ELECTRICA:

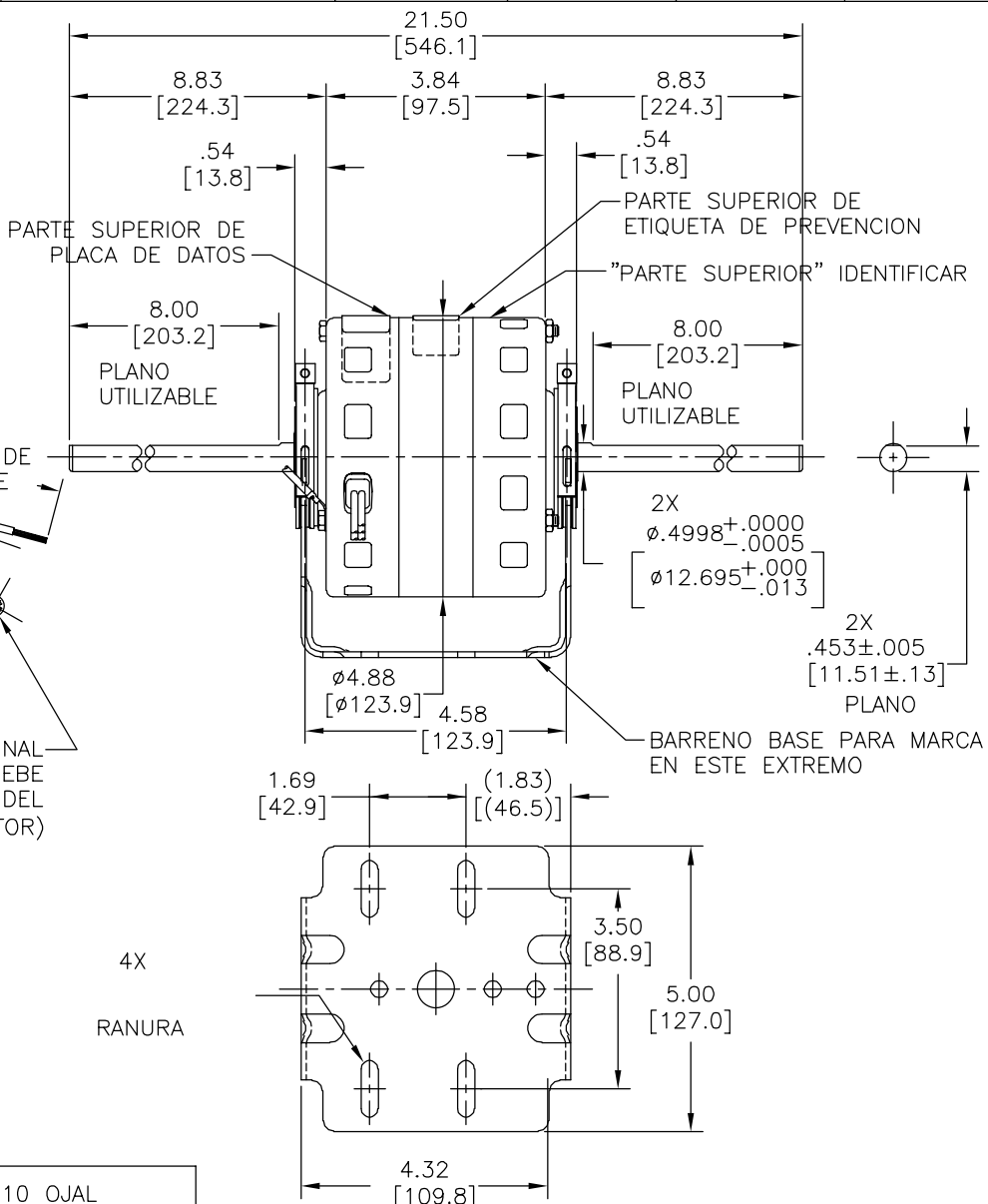
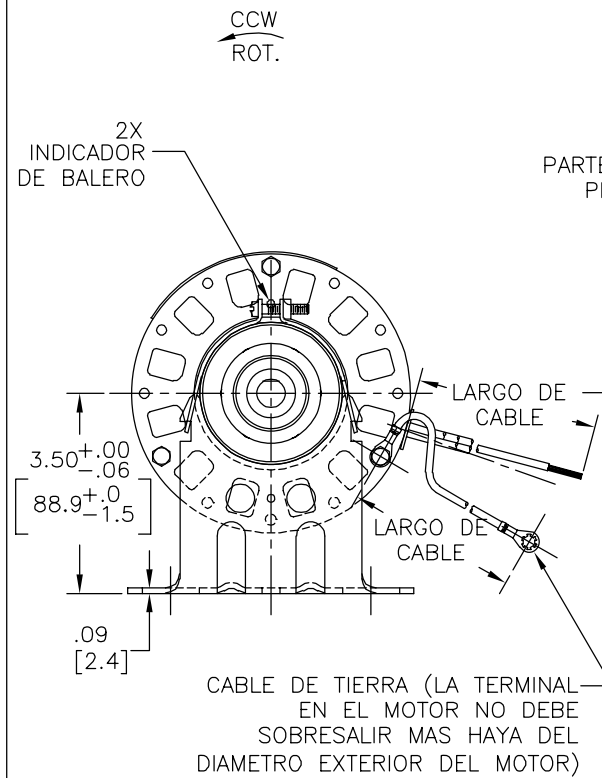
PROTECTOR DE SOBRECARGA: REINICIO AUTOMATICO (T.I. 7AM 304)

CABLES: NO. 18 GA., .03 [.8] THK. XLP 125°C INSUL.

CABLE DE TIERRA: NO. 18 GA., .03 [.8] THK., (VERDE) INSUL.

NOTA:  
1. NUMERO DE PARTE DE DISTRIBUCION: 7RAB4010  
NUMERO DE PARTE GRAINGER: 4UB83

REVISION:	ECO	REVISADO POR:	FECHA:	APROBADO POR:	FECHA:
E	0025528	E.SINECIO	04-24-2012	R.RASCON	04-24-2012



VERDE (TIERRA)	4.0/5.0 [102/127]	#10 OJAL
ROJO	26.0/28.0 [660/711]	.50 [12.7] FORRO
NARANJA	26.0/28.0 [660/711]	.50 [12.7] FORRO
AZUL	26.0/28.0 [660/711]	.50 [12.7] FORRO
NEGRO	26.0/28.0 [660/711]	.50 [12.7] FORRO
MORADO	26.0/28.0 [660/711]	.50 [12.7] FORRO
COLOR	LARGO	LARGO DE TIRA O TERMINAL

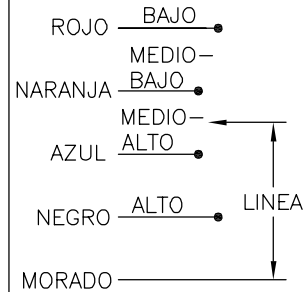
CARCAZA.-LOC	ABIERTO
TAPA.-LOC	ABIERTO
CARCAZA.-LOC	ABIERTO
TAPA.-LOC	ABIERTO

CLIENTE	SERVICIO DE DISTRIBUCION
---------	--------------------------

INFORMACION DE PLACA DE DATOS

MODEL NO.: B42B02A01  
CUST. P/N: [ ]  
HP: 1/10  
ROT.: CCWLE  
RPM: 1050/4 SPD.  
TYPE: FE  
FRAME: 42YZ  
VOLTS: 277  
PH: 1  
AMPS: 1.6  
HZ: 60  
INS.: B  
AMB.: 40° C  
DUTY: AIR OVER  
CAP.: -  
UL LOGO  
CSA LOGO  
THERMALLY PROTECTED TYPE C

DIAGRAMA DE CONECCION EXTERNA



NO. CURVA DESEMPEÑO	TORQUE @1050 RPM (25°C)	MUESTRA APROVADA	COMPONENTE UL	CSA
C32393	11.2 OZ. FT.	0442718B	#ARCHIVO #GUIA	#ARCHIVO #GUIA
			E46412 PRGY2	LR43341 4211-01

INFORMACION DE CABLE

ENCERRADO

CARACTERISTICAS DE GEOMETRIA Y SIMBOLOS

- PLANICIDAD
- RECTITUD
- ∠ ANGULARIDAD
- ⊥ PERPENDICULARIDAD (A ESCUADRA)
- // PARALELISMO
- REDONDEZ (CIRCULARIDAD)
- ∅ CILINDRICIDAD
- △ PERFIL DE CUALQUIER SUPERFICIE
- ∩ PERFIL DE CUALQUIER LINEA
- ∧ VARIACION
- ⊕ POSICION REAL
- ⊙ CONCENTRICIDAD
- = SIMETRIA

ASME Y14.5M 1994

REGAL-BELOIT CORPORATION (RBC) PROVEE ASISTENCIA TECNICA A NUESTROS CLIENTES EN VARIAS AREAS, DESDE QUE RBC NO RECIBE TODOS LOS DATOS EN RELACION AL USO Y A LA APLICACION DEL MOTOR, LA APLICACION ADECUADA DEL MOTOR DEBE SER DETERMINADA POR EL CLIENTE.

DIMENSIONES SIN TOLERANCIA SON DE REFERENCIA SOLAMENTE

DIBUJADO POR: S.RECKE 08-13-2004

APROBADO POR: G.PIATT 10-19-2004

TERCER ANGULO DE PROYECCION

FECHA EDS: 02-22-2008

REV. FORMATO: G

CONFIDENCIAL: ESTE DIBUJO Y SU INFORMACION SON PROPIEDAD DE USO EXCLUSIVO Y CONFIDENCIAL DE REGAL-BELOIT CORPORATION. Y NO DEBERAN SER REVELADOS, DUPLICADOS, DISTRIBUIDOS O USARSE DE OTRA MANERA SIN EL CONSENTIMIENTO ESCRITO DE REGAL-BELOIT CORPORATION. -TODOS LOS DERECHOS RESERVADOS.



DESCRIPCION: MODEL-RFHP-42FR OUTLINE

TAMAÑO: C NUMERO DE DIBUJO: 11927-053

ESCALA: NONE HOJA: 1

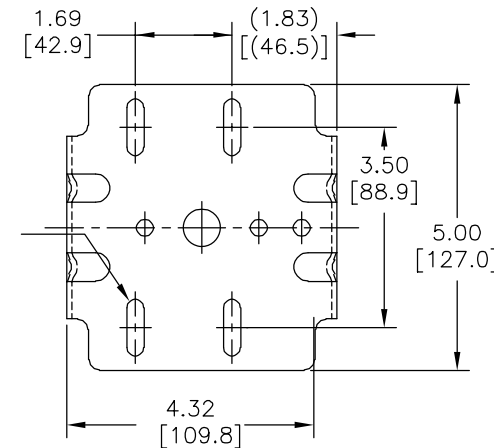
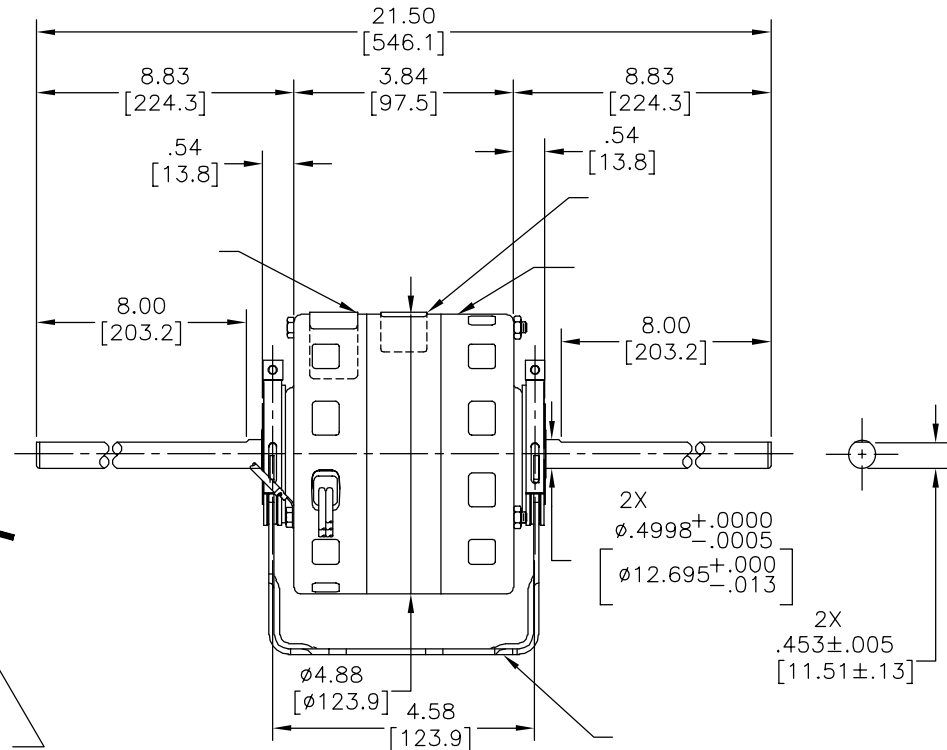
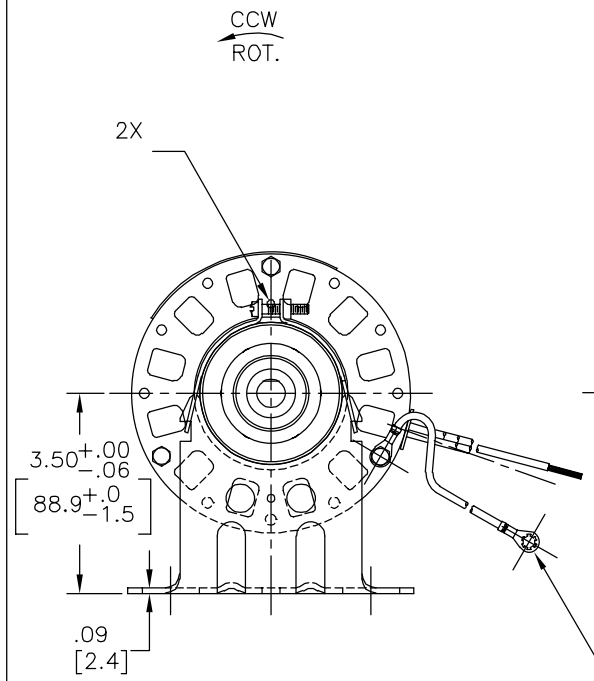
4

3

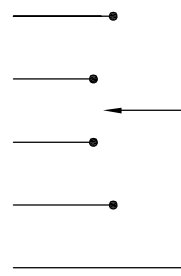
2

1

版本	ECO	编制	日期	批准	日期
E	0025528	E.SINECIO	04-24-2012	R.RASCON	04-24-2012



MODEL NO.: B42B02A01  
 CUST. P/N:   
 HP: 1/10  
 ROT.: CCWLE  
 RPM: 1050/4 SPD.  
 TYPE: FE  
 FRAME: 42YZ  
 VOLTS: 277  
 PH: 1  
 AMPS: 1.6  
 HZ: 60  
 INS.: B  
 AMB.: 40° C  
 DUTY: AIR OVER  
 CAP.: -  
 UL LOGO  
 CSA LOGO  
 THERMALLY PROTECTED  
 TYPE C



	4.0/5.0	
	[102/127]	
	26.0/28.0	
	[660/711]	
	26.0/28.0	
	[660/711]	
	26.0/28.0	
	[660/711]	
	26.0/28.0	
	[660/711]	
	26.0/28.0	
	[660/711]	

					CSA
C32393	11.2 OZ. FT.	0442718B	E46412	PRGY2	LR43341 4211-01

- 形位公差
- 平面度
- 直线度
- ∠ 倾斜度
- ⊥ 垂直度
- // 平行度
- 圆度
- ⊘ 圆柱度
- ⊙ 面轮廓度
- ⌒ 线轮廓度
- ↗ 圆跳动
- ⊕ 位置度
- ⊗ 同轴度
- ≡ 对称度

ASME Y14.5M 1994

**REGAL-BELOIT CORPORATION (RBC)** 在个别领域为客户提供技术支持。鉴于RBC未收到任何涉及电机使用和应用环境的数据，电机的适用性由客户自己决定。

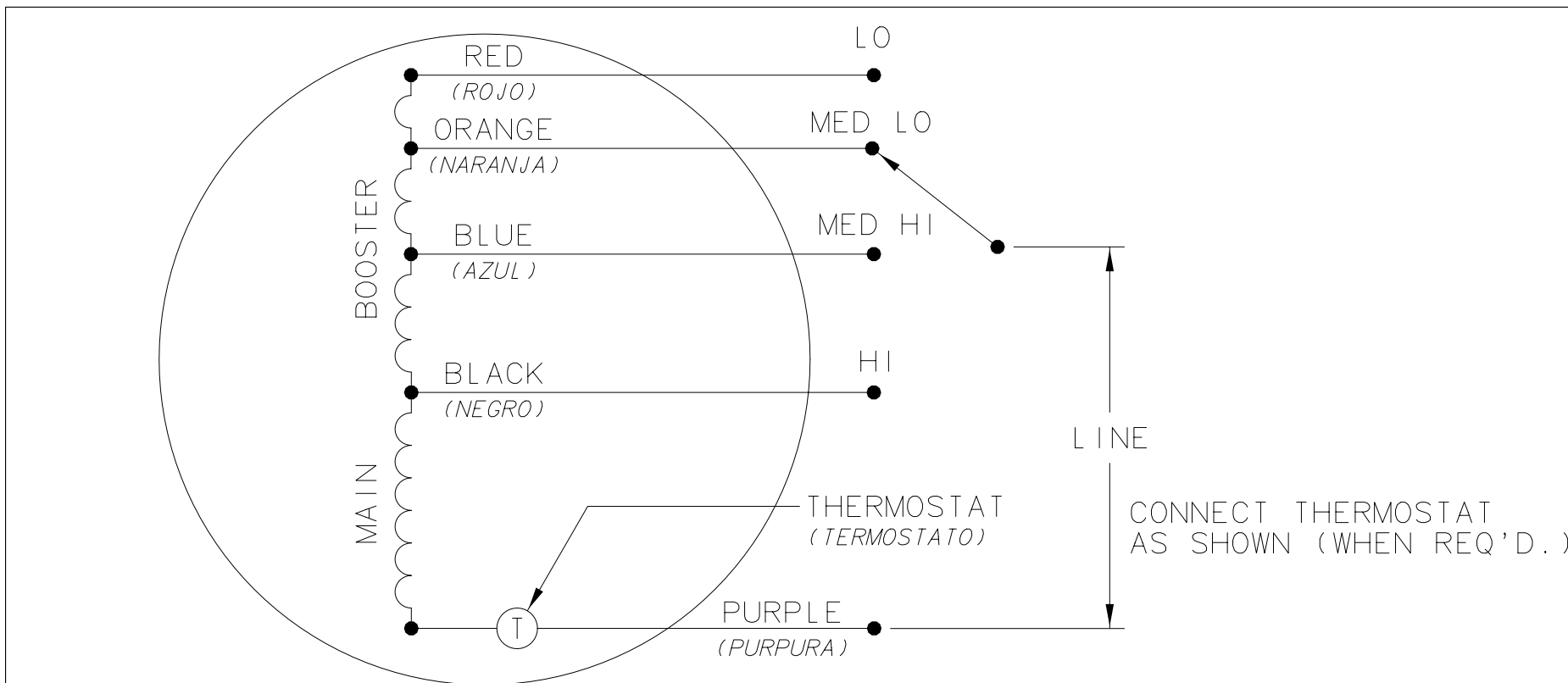
未注公差尺寸仅供参考。

绘图:	S.RECKE	08-13-2004
批准:	G.PIATT	10-19-2004
第三角投影		图纸格式发布日期 02-22-2008 图纸格式版本 G
机密: 本图纸及相关信息所有权归REGAL-BELOIT CORPORATION。未经REGAL-BELOIT CORPORATION书面授权, 不得泄露、复制、传播或作其他用途。—版权所有		



名称	MODEL-RFHP-42FR OUTLINE	
图幅	C	图号 11927-053
比例	NONE	页号 1


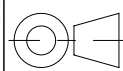
630450



QUALITY CONTROL NOTE:

- TO CHECK THE WINDINGS FOR OPENS, VERIFY THE CONTINUITY BETWEEN THE PURPLE & RED LEADS.
- 4 SPEED

C					
B					
A	-	-	-	-	-
	DATE	CHANGED FROM	ENG DRF APPROVED	NOTICE	

GEOMETRIC CHARACTERISTICS & SYMBOLS □ FLATNESS — STRAIGHTNESS ∠ ANGULARITY ⊥ PERPENDICULARITY (SQUARENESS) // PARALLELISM ○ ROUNDNESS (CIRCULARITY) ⌀ CYLINDRICITY △ PROFILE OF ANY SURFACE ∩ PROFILE OF ANY LINE ↗ RUNOUT ⊕ TRUE POSITION ◎ CONCENTRICITY ≡ SYMMETRY	UNLESS OTHERWISE SPECIFIED DIMENSION TOLERANCES ARE AS FOLLOWS .X .XX .XXX INCHES ±.02 ±.005 METRIC ±.5 ±.13 ANGLES ±.50 DEG REMOVE BURRS AND BREAK SHARP EDGES .003-.015, CORNER FILLETS TO .020 MACHINE SURFACES 125✓	MATERIAL  PROCESS	DRAWN J. RUPERT 10/18/04 APPROVED G. PIATT 10/19/04	<b>A.O. SMITH</b> A DIVISION OF A.O. SMITH CORPORATION ELECTRICAL PRODUCTS COMPANY TIPP CITY, OHIO  COPYRIGHT 1995
	CONFIDENTIAL: THIS DRAWING AND ITS INFORMATION ARE THE EXCLUSIVE AND CONFIDENTIAL PROPERTY OF A.O. SMITH CORP. AND ARE NOT TO BE DISCLOSED, DUPLICATED, DISTRIBUTED OR OTHERWISE USED WITHOUT THE WRITTEN CONSENT OF A.O. SMITH CORP. - ALL RIGHTS RESERVED	REFERENCE  APPLICATION B42B02A01 USER/FILE FR42/CONEXT	DESCRIPTION CONNECTION DIAGRAM EXTERNAL	SIZE <b>A</b>  PART NUMBER 630450
		SCALE NONE	NOTICE 0442718	SHEET 1 of 1