

PRODUCT INFORMATION PACKET



Model No: 917L

Catalog No: 917L

Replaced by 5KH32DN3085 (HG156) once inventory is depleted - 1/6,1725,ODP,48Z,1/60/115
Fan and Blower Motors



Regal and Century are trademarks of Regal Rexnord Corporation or one of its affiliated companies.

©2021 Regal Rexnord Corporation, All Rights Reserved. MC017097E





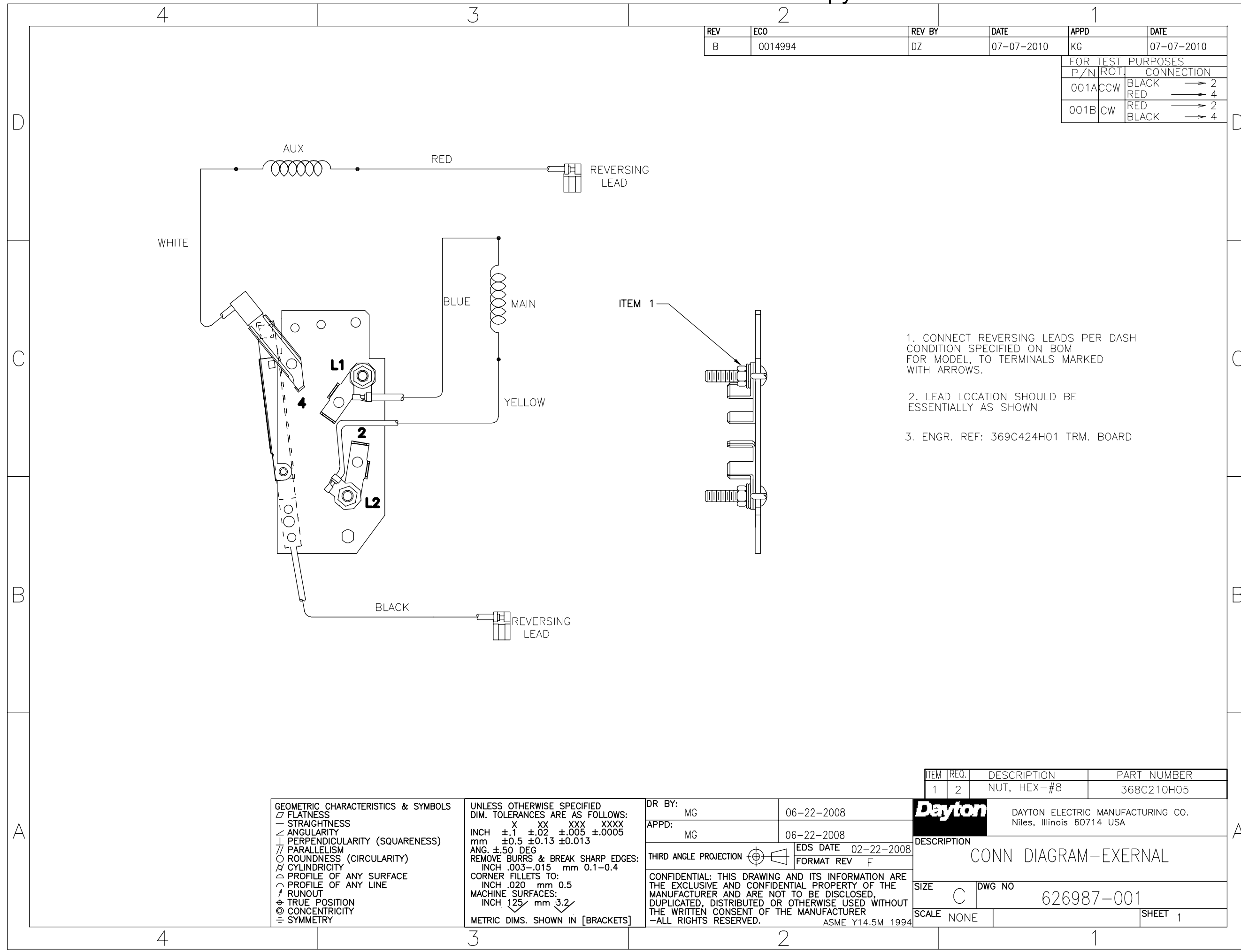
Nameplate Specifications

Output HP	1/6 Hp	Output KW	0.13 kW
Frequency	60 Hz	Voltage	115 V
Current	3.9 A	Speed	1725 rpm
Service Factor	1.35	Phase	1
Duty	Continuous	Insulation Class	B
Frame	48Z	Enclosure	Open Drip Proof
Thermal Protection	None	Ambient Temperature	40 °C
UL	Recognized	CSA	Y
CE	N	Number of Speeds	1

Technical Specifications

Electrical Type	Split Phase	Starting Method	Across The Line
Poles	4	Rotation	Reversible
Mounting	Resilient Base	Drive End Bearing	Ball
Opp Drive End Bearing	Ball	Frame Material	Rolled Steel
Shaft Type	Flat	Overall Length	9.69 in
Frame Length	4.94 in	Shaft Diameter	0.500 in
Shaft Extension	1.94 in		
Outline Drawing	917L-S01	Connection Drawing	626987-001B

This is an uncontrolled document once printed or downloaded and is subject to change without notice. Date Created:10/11/2021



REV	ECO	REV BY	DATE	APPD	DATE
B	0014994	DZ	07-07-2010	KG	07-07-2010

FOR TEST PURPOSES			
P/N	ROT.	CONNECTION	
001A	CCW	BLACK	→ 2
		RED	→ 4
001B	CW	RED	→ 2
		BLACK	→ 4

1. CONNECT REVERSING LEADS PER DASH CONDITION SPECIFIED ON BOM FOR MODEL, TO TERMINALS MARKED WITH ARROWS.
2. LEAD LOCATION SHOULD BE ESSENTIALLY AS SHOWN
3. ENGR. REF: 369C424H01 TRM. BOARD

ITEM	REQ.	DESCRIPTION	PART NUMBER
1	2	NUT, HEX-#8	368C210H05

GEOMETRIC CHARACTERISTICS & SYMBOLS
 ▭ FLATNESS
 — STRAIGHTNESS
 ∠ ANGULARITY
 ⊥ PERPENDICULARITY (SQUARENESS)
 ∥ PARALLELISM
 ○ ROUNDNESS (CIRCULARITY)
 ∅ CYLINDRICITY
 △ PROFILE OF ANY SURFACE
 ∩ PROFILE OF ANY LINE
 ↗ RUNOUT
 ⊕ TRUE POSITION
 ⊙ CONCENTRICITY
 ≡ SYMMETRY

UNLESS OTHERWISE SPECIFIED DIM. TOLERANCES ARE AS FOLLOWS:
 INCH X XX XXX XXXX
 mm ±0.5 ±0.13 ±0.05 ±0.005
 ANG. ±50 DEG
 REMOVE BURRS & BREAK SHARP EDGES:
 INCH .003-.015 mm 0.1-0.4
 CORNER FILLETS TO:
 INCH .020 mm 0.5
 MACHINE SURFACES:
 INCH 125 mm 3.2
 METRIC DIMS. SHOWN IN [BRACKETS]

DR BY: MG 06-22-2008
 APPD: MG 06-22-2008
 THIRD ANGLE PROJECTION
 EDS DATE 02-22-2008
 FORMAT REV F
 CONFIDENTIAL: THIS DRAWING AND ITS INFORMATION ARE THE EXCLUSIVE AND CONFIDENTIAL PROPERTY OF THE MANUFACTURER AND ARE NOT TO BE DISCLOSED, DUPLICATED, DISTRIBUTED OR OTHERWISE USED WITHOUT THE WRITTEN CONSENT OF THE MANUFACTURER -ALL RIGHTS RESERVED. ASME Y14.5M 1994

Dayton DAYTON ELECTRIC MANUFACTURING CO.
 Niles, Illinois 60714 USA

DESCRIPTION
CONN DIAGRAM-EXTERNAL

SIZE C DWG NO 626987-001
 SCALE NONE SHEET 1

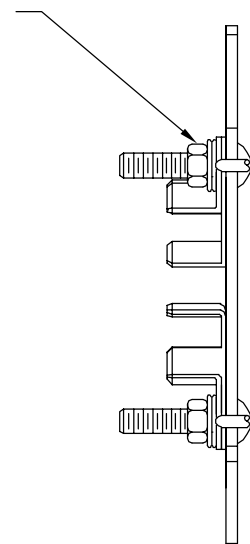
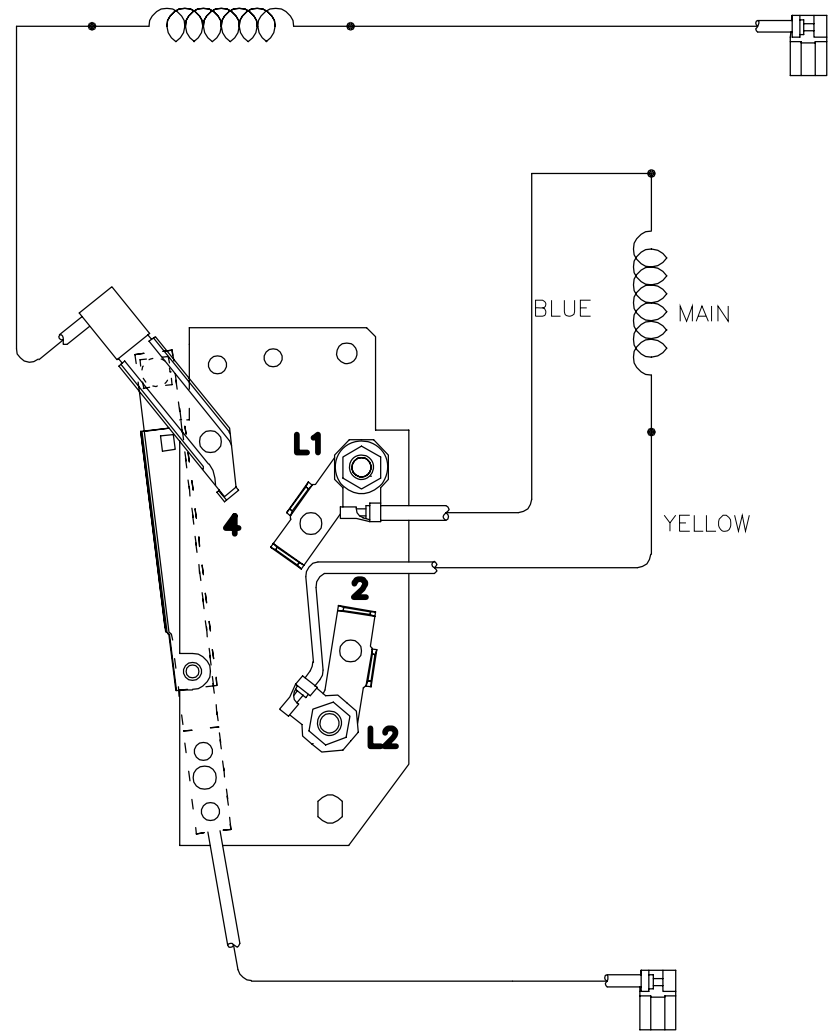
4

3

2

1

REVISION:	ECO	REVISADO POR:	FECHA:	APROBADO POR:	FECHA:
B	0014994	DZ	07-07-2010	KG	07-07-2010



CARACTERISTICAS DE GEOMETRIA Y SIMBOLOS

- ▭ PLANICIDAD
- RECTITUD
- ∠ ANGULARIDAD
- ⊥ PERPENDICULARIDAD (A ESCUADRA)
- // PARALELISMO
- REDONDEZ (CIRCULARIDAD)
- ⊘ CILINDRICIDAD
- △ PERFIL DE CUALQUIER SUPERFICIE
- ∧ PERFIL DE CUALQUIER LINEA
- ↑ VARIACION
- ⊕ POSICION REAL
- ◎ CONCENTRICIDAD
- = SIMETRIA

A MENOS QUE SE ESPECIFIQUE DE OTRA MANERA, LAS TOLERANCIAS DE LAS DIMS; SON LAS SIGUIENTES:

	x	xx	xxx	xxxx
PULG	±.1	±.02	±.005	±.0005
mm	±0.5	±0.13	±0.013	

ANG. ± 50 GRADOS
ELIMINAR REBABAS Y ORILLAS FILOSAS DEL BORDE.

	PULG	.003-.015	mm	0.1-0.4
--	------	-----------	----	---------

FILETEAR ESQUINA: PULG .020 mm 0.5
MAQUINAR SUPERFICIES
PULG 125 mm .32

DIMS METRICAS MOSTRADAS [PARENTESIS]

DIBUJADO POR:	MG	06-22-2008
APROBADO POR:	MG	06-22-2008
TERCER ANGULO DE PROYECCION	⊕	FECHA EDS: 02-22-2008 REV. FORMATO: F
CONFIDENCIAL: ESTE DIBUJO Y SU INFORMACION SON PROPIEDAD DE USO EXCLUSIVO Y CONFIDENCIAL DE A.O.SMITH CORP. Y NO DEBERAN SER REVELADOS, DUPLICADOS, DISTRIBUIDOS O USARSE DE OTRA MANERA SIN EL CONSENTIMIENTO ESCRITO DE A.O. SMITH CORP. -TODOS LOS DERECHOS RESERVADOS.ASME Y14.5M 1994		

Dayton		DAYTON ELECTRIC MANUFACTURING CO. Niles, Illinois 60714 USA
DESCRIPCION: CONN DIAGRAM-EXERNAL		
TAMAÑO: C	NUMERO DE DIBUJO: 626987-001	
ESCALA:NONE		HOJA: 1

4

3

2

1

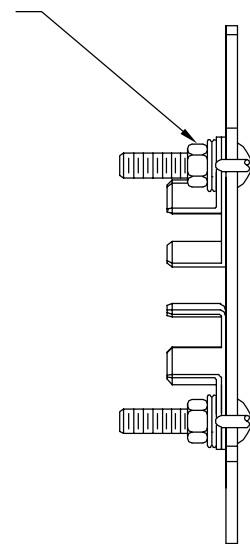
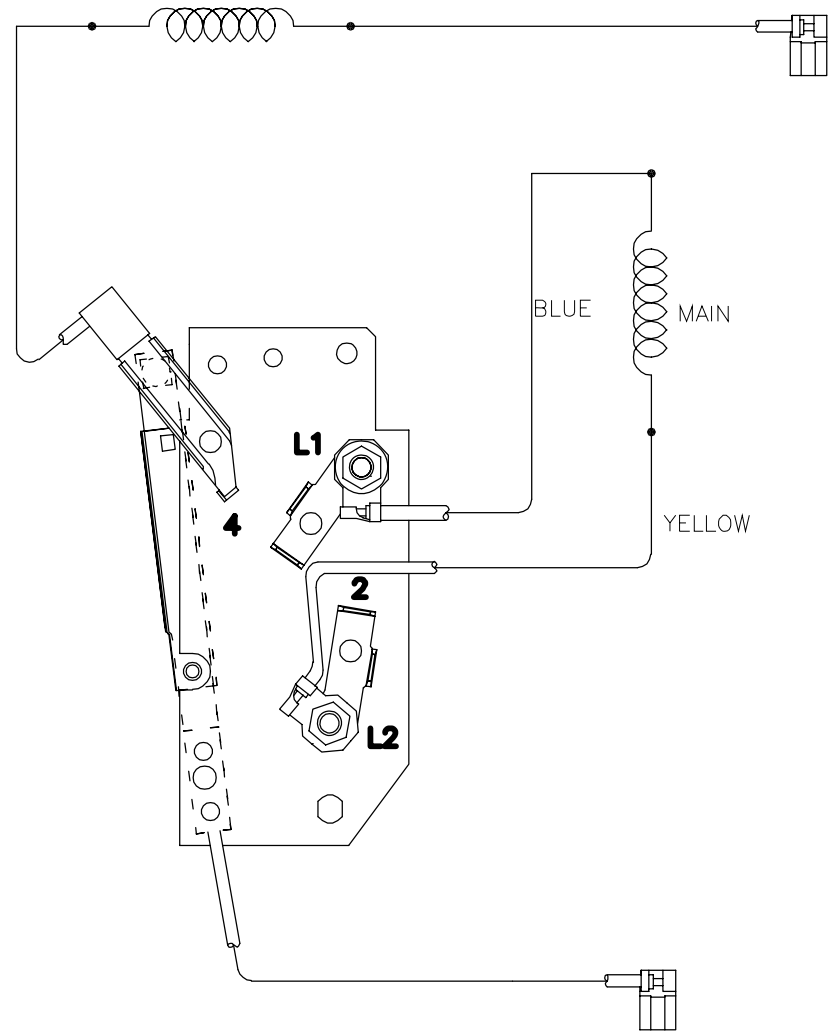
4

3

2

1

版本	ECO	编制	日期	批准	日期
B	0014994	DZ	07-07-2010	KG	07-07-2010



形位公差
□ 平面度
— 直线度
∠ 倾斜度
⊥ 垂直度
// 平行度
○ 圆度
⊘ 圆柱度
△ 面轮廓度
∩ 线轮廓度
↗ 圆跳动
⊕ 位置度
⊙ 同轴度
≡ 对称度

除另有注明 尺寸公差如下:
英寸 X ±.1 XX ±.02 XXX ±.005 XXXX ±.0005
毫米 ±0.5 ±0.13 ±0.013
角度 ±.50 度
清理毛刺和尖棱
英寸 .003-.015 毫米 0.1-0.4
内圆角
英寸 .020 毫米 0.5
表面粗糙度
英制 125 米制 3.2
米制尺寸显示在 []

绘图:	MG	06-22-2008
批准:	MG	06-22-2008
第三角投影		图纸格式发布日期 02-22-2008 图纸格式版本 F
机密: 本图纸及相关信息所有权归制造商所有。 未经制造商书面授权, 不得泄露、复制、传播或作 其他用途。— 版权所有		
ASME Y14.5M 1994		

Dayton		DAYTON ELECTRIC MANUFACTURING CO. Niles, Illinois 60714 USA
名称 CONN DIAGRAM-EXTERNAL		
图幅 C	图号 626987-001	
比例 NONE	页号 1	

4

3

2

1