

# PRODUCT INFORMATION PACKET



Model No: 939L

Catalog No: 939L

Circulator Pump Motor, 1/12 HP, 1 Ph, 60 Hz, 115 V, 1800 RPM, 48Y Frame, ODP



Regal and Century are trademarks of Regal Rexnord Corporation or one of its affiliated companies.

©2022 Regal Rexnord Corporation, All Rights Reserved. MC017097E





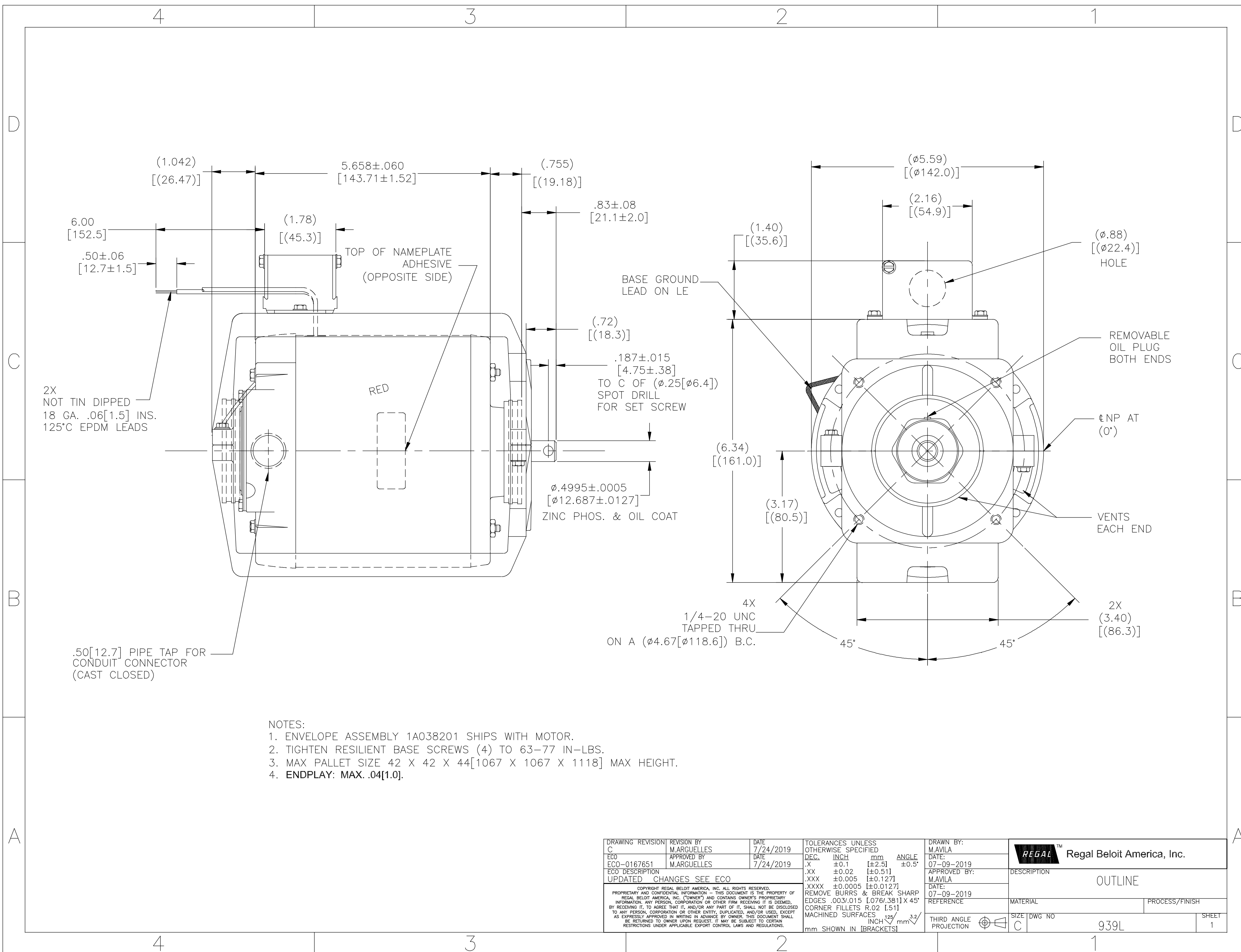
**Nameplate Specifications**

Output HP	1/12 Hp	Output KW	0.06 kW
Frequency	60 Hz	Voltage	115 V
Current	2.5 A	Speed	1725 rpm
Service Factor	1	Phase	1
Duty	Continuous	Insulation Class	B
Frame	48Y	Enclosure	Open Drip Proof
Thermal Protection	Automatic	Ambient Temperature	40 °C
UL	Recognized	CSA	Y
CE	N	Number of Speeds	1

**Technical Specifications**

Electrical Type	Split Phase	Starting Method	Across The Line
Poles	4	Rotation	Counterclockwise
Mounting	Resilient Base	Drive End Bearing	Sleeve
Opp Drive End Bearing	Sleeve	Frame Material	Rolled Steel
Shaft Type	Spot Drill	Overall Length	8.29 in
Frame Length	4.35 in	Shaft Diameter	0.500 in
Shaft Extension	7.76 in		
Outline Drawing	939L-S01	Connection Drawing	2511143-001

This is an uncontrolled document once printed or downloaded and is subject to change without notice. Date Created:11/28/2022



- NOTES:
1. ENVELOPE ASSEMBLY 1A038201 SHIPS WITH MOTOR.
  2. TIGHTEN RESILIENT BASE SCREWS (4) TO 63-77 IN-LBS.
  3. MAX PALLET SIZE 42 X 42 X 44 [1067 X 1067 X 1118] MAX HEIGHT.
  4. ENDPLAY: MAX. .04 [1.0].

DRAWING REVISION C	REVISION BY M.ARGUELLES	DATE 7/24/2019	TOLERANCES UNLESS OTHERWISE SPECIFIED DEC. INCH mm ANGLE .X ±0.1 [±2.5] ±0.5° .XX ±0.02 [±0.51] .XXX ±0.005 [±0.127] .XXXX ±0.0005 [±0.0127]	DRAWN BY: M.AVILA	Regal Beloit America, Inc.
ECO ECO-0167651	APPROVED BY M.ARGUELLES	DATE 7/24/2019	REMOVE BURRS & BREAK SHARP EDGES .003/.015 [0.076/.381] X 45° CORNER FILLETS R.02 [51] MACHINED SURFACES 125/INCH 3.2/mm	DATE: 07-09-2019	
ECO DESCRIPTION UPDATED CHANGES SEE ECO				APPROVED BY: M.AVILA	DESCRIPTION OUTLINE
<small>COPYRIGHT REGAL BELOIT AMERICA, INC. ALL RIGHTS RESERVED. PROPRIETARY AND CONFIDENTIAL INFORMATION - THIS DOCUMENT IS THE PROPERTY OF REGAL BELOIT AMERICA, INC. (OWNER) AND CONTAINS OWNER'S PROPRIETARY INFORMATION. ANY PERSON, CORPORATION OR OTHER FIRM RECEIVING IT IS DEEMED, BY RECEIVING IT, TO AGREE THAT IT, AND/OR ANY PART OF IT, SHALL NOT BE DISCLOSED TO ANY PERSON, CORPORATION OR OTHER ENTITY, DUPLICATED, AND/OR USED, EXCEPT AS EXPRESSLY APPROVED IN WRITING IN ADVANCE BY OWNER. THIS DOCUMENT SHALL BE RETURNED TO OWNER UPON REQUEST. IT MAY BE SUBJECT TO CERTAIN RESTRICTIONS UNDER APPLICABLE EXPORT CONTROL LAWS AND REGULATIONS.</small>				DATE: 07-09-2019	MATERIAL
				REFERENCE	PROCESS/FINISH
				THIRD ANGLE PROJECTION	SIZE DWG NO C 939L
					SHEET 1