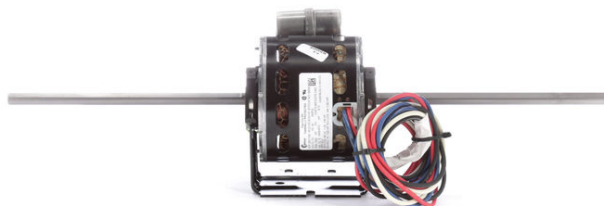


PRODUCT INFORMATION PACKET



Model No: 945A
Catalog No: 945A

OEM Replacement Motor, 1/8-1/20-1/30 HP, 1 Ph, 60 Hz, 115 V, 1500 RPM, 3 Speed, 42 Frame, OAO



Regal and Century are trademarks of Regal Rexnord Corporation or one of its affiliated companies.
©2022 Regal Rexnord Corporation, All Rights Reserved. MC017097E





Nameplate Specifications

Output HP	1/8-1/20-1/30 Hp	Output KW	0.10 kW
Frequency	60 Hz	Voltage	115 V
Current	1.2/0.7/0.4 A	Speed	1500 rpm
Service Factor	1	Phase	1
Duty	Air Over	Insulation Class	B
Frame	42Y	Enclosure	Open Air Over
Thermal Protection	Automatic	Ambient Temperature	40 °C
UL	Recognized	CSA	Y
CE	N	Number of Speeds	3

Technical Specifications

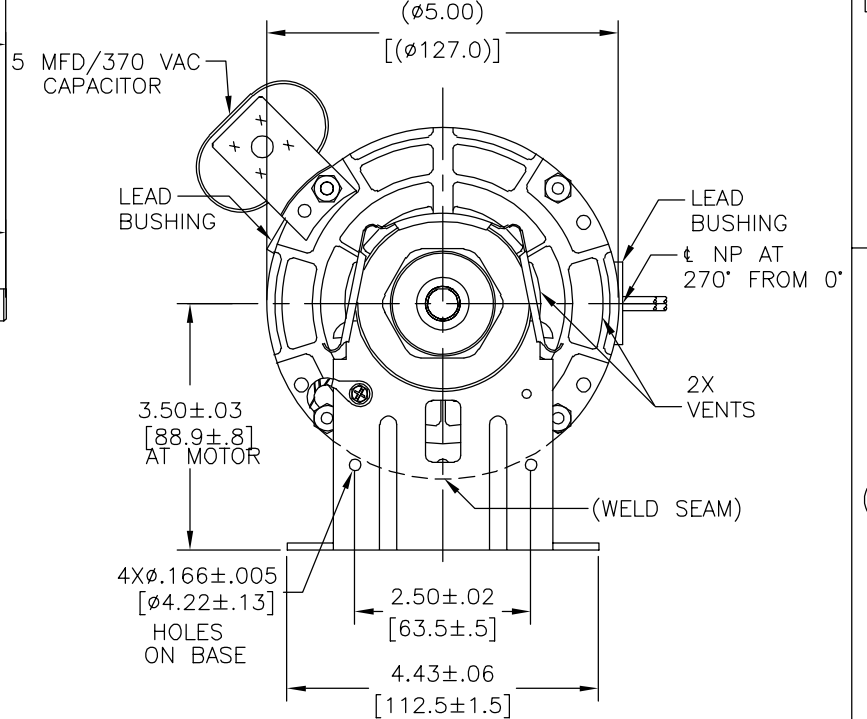
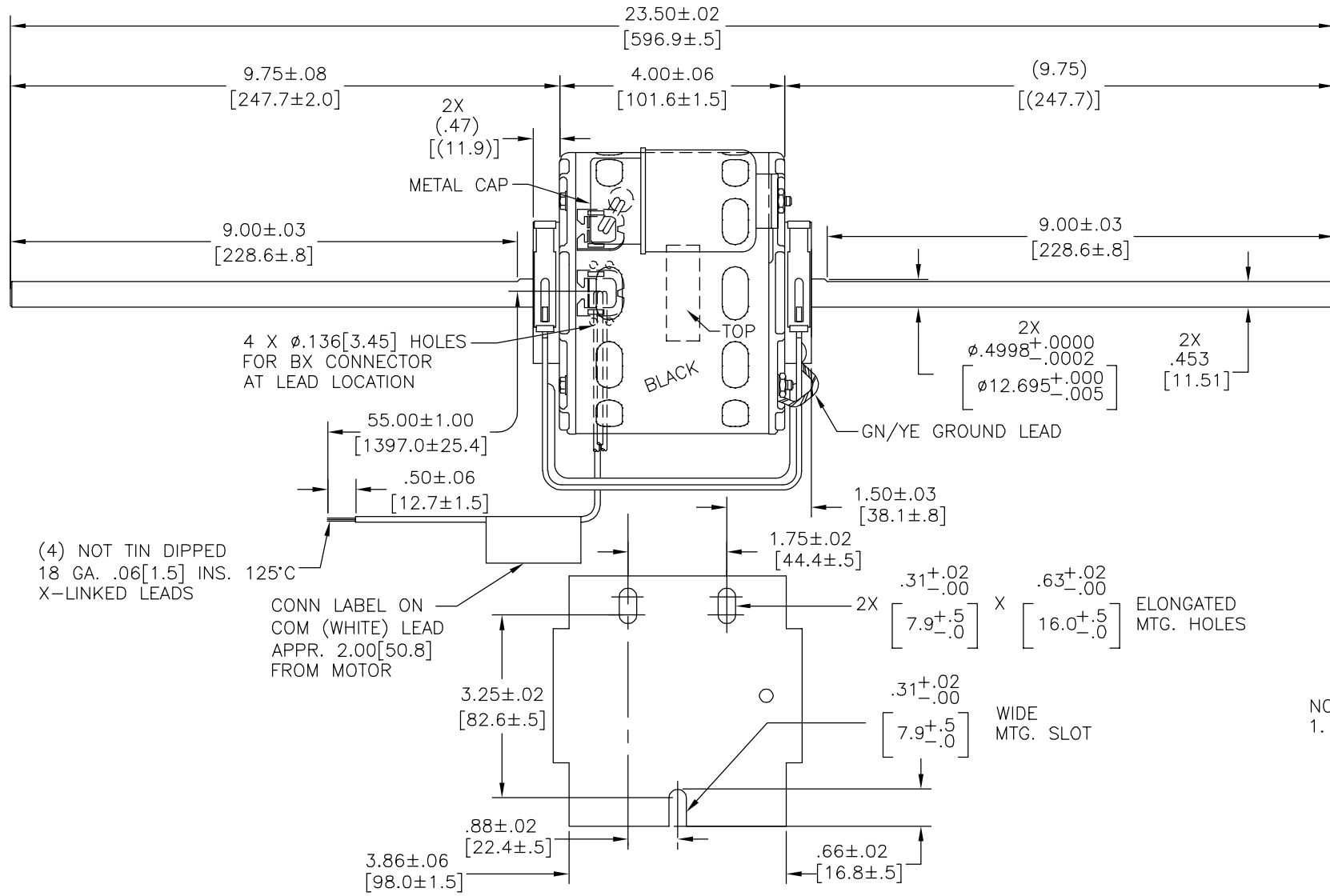
Electrical Type	Permanent Split Capacitor	Starting Method	Across The Line
Poles	4	Rotation	Counterclockwise Lead End
Mounting	Resilient Base	Motor Orientation	Horizontal
Drive End Bearing	Sleeve	Opp Drive End Bearing	Sleeve
Frame Material	Rolled Steel	Shaft Type	Flat
Overall Length	23.50 in	Frame Length	3.42 in
Shaft Diameter	0.500 in	Shaft Extension	9.8X.5X9.8 in
Outline Drawing	DE2E7221-S01		

This is an uncontrolled document once printed or downloaded and is subject to change without notice. Date Created:11/28/2022

CUSTOMER IS SOLELY RESPONSIBLE FOR MOTOR PERFORMANCE AND SUITABILITY IN APPLICATIONS FOR CUSTOMER'S USES.

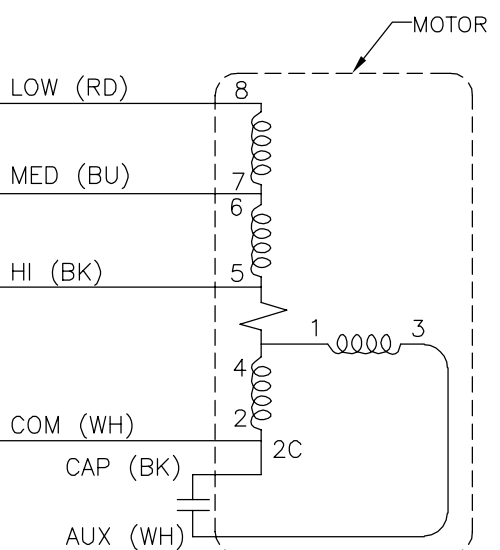
REV	ECO	REV BY	DATE	APPD	DATE
D	0029018	J.AGUILERA	29-10-2012	D.BALDERRAMA	29-10-2012

END PLAY .005 [.13] MIN. - .040 [1.02] MAX.
 MAX. SHAFT RUN OUT .001 [.03] PER INCH
 MAX. RUN OUT NOT TO EXCEED .0075[.191]





NOTE:
 1. DISTRIBUTION PART NUMBER: 945A
 GRAINGER PART NUMBER: 4UU20


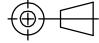
ELECTRICALLY PER
 S9558E
 PERFORMANCE CURVE NO.
 C32363



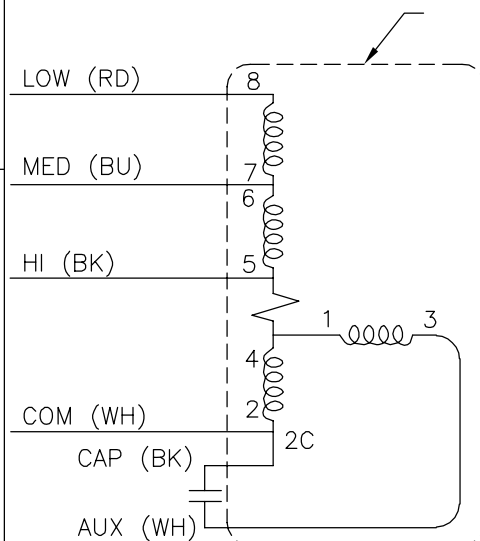
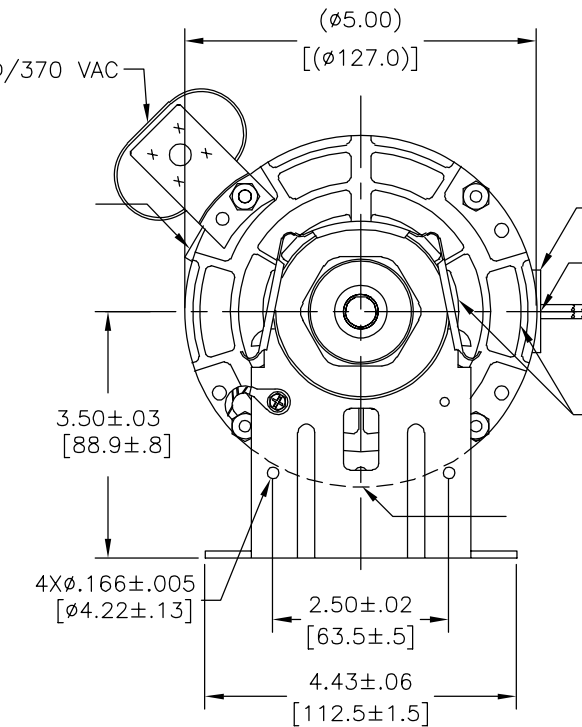
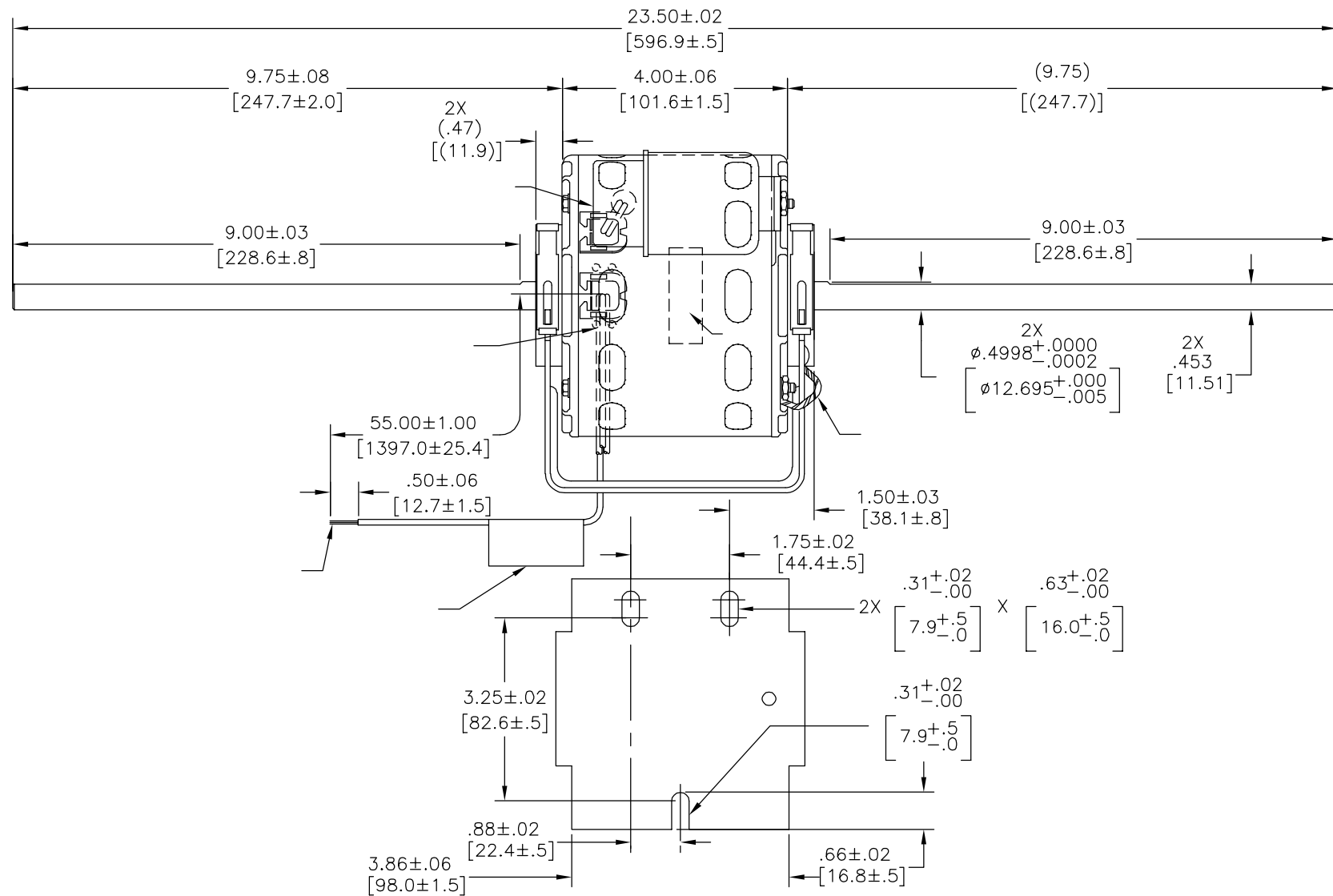
SCHMATIC-21
 GEOMETRIC CHARACTERISTICS & SYMBOLS
 □ FLATNESS
 - STRAIGHTNESS
 < ANGLARITY
 ⊥ PERPENDICULARITY (SQUARENESS)
 // PARALLELISM
 ○ ROUNDNESS (CIRCULARITY)
 ∅ CYLINDRICITY
 △ PROFILE OF ANY SURFACE
 ∩ PROFILE OF ANY LINE
 ∞ RUNOUT
 ⊕ TRUE POSITION
 ⊙ CONCENTRICITY
 = SYMMETRY
 ASME Y14.5M 1994

ROT.: - CCWLE
 NAMEPLATE DATA:
 **Century** Tipp City, OH
 THERMALLY PROTECTED 
 SER. DATE & P0# PLT LTR MOD DE2E221N' []
 VOLTS 115 HZ 60 AMPS
 RPM 1500 SP PH CAP 5 MFD/370 VAC
 INS CLB AMB40°C HP AO
 BRG SLV ASSEMBLED IN MEXICO
 WH-COM BK-HI 1.2A 1/8HP
 BU-MED.7A 1/20HP RD-LOW .4A 1/30HP

CONN LABEL
 63T7433-102

DR BY: JRUPER APPD:	09-22-2004	 REGAL-BELOIT CORPORATION
	EDS DATE 11-11-2011 FORMAT REV H	
THIRD ANGLE PROJECTION 		DESCRIPTION MODEL-RFHP-42FR OUTLINE
CONFIDENTIAL: THIS DRAWING AND ITS INFORMATION ARE THE EXCLUSIVE AND CONFIDENTIAL PROPERTY OF REGAL-BELOIT CORPORATION AND ARE NOT TO BE DISCLOSED, DUPLICATED, DISTRIBUTED OR OTHERWISE USED WITHOUT THE WRITTEN CONSENT OF REGAL-BELOIT CORPORATION. -ALL RIGHTS RESERVED.		SIZE C DWG NO DE2E7221
SCALE NONE		SHEET 1

REVISION:	ECO	REVISADO POR:	FECHA:	APROBADO POR:	FECHA:
D	0029018	J.AGUILERA	29-10-2012	D.BALDERRAMA	29-10-2012



Tipp City, OH
 THERMALLY PROTECTED



SER. DATE & P0# PLT LTR MOD DE2E221N'
 VOLTS 115 HZ 60 AMPS
 RPM 1500 SP PH CAP 5 MFD/370 VAC
 INS CLB AMB40°C HP AO
 BRG SLV ASSEMBLED IN MEXICO
 WH-COM BK-HI 1.2A 1/8HP
 BU-MED.7A 1/20HP RD-LOW .4A 1/30HP

63T7433-102

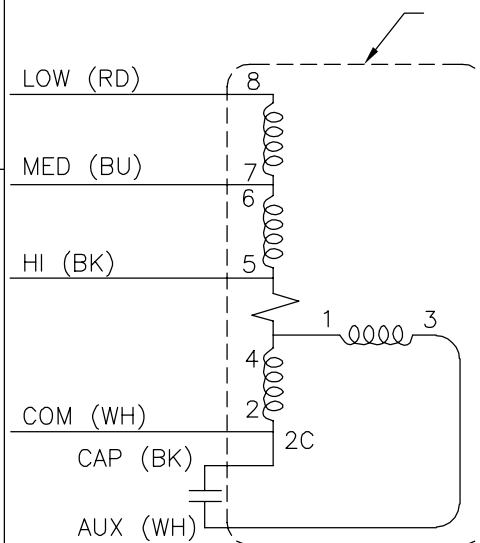
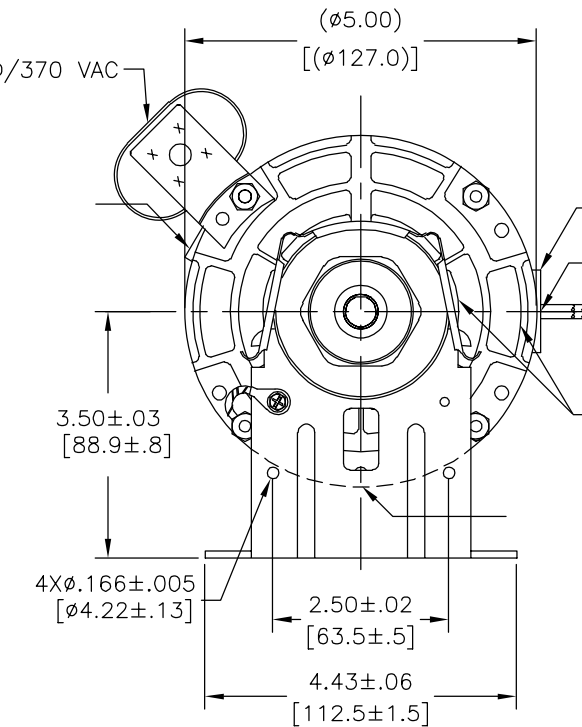
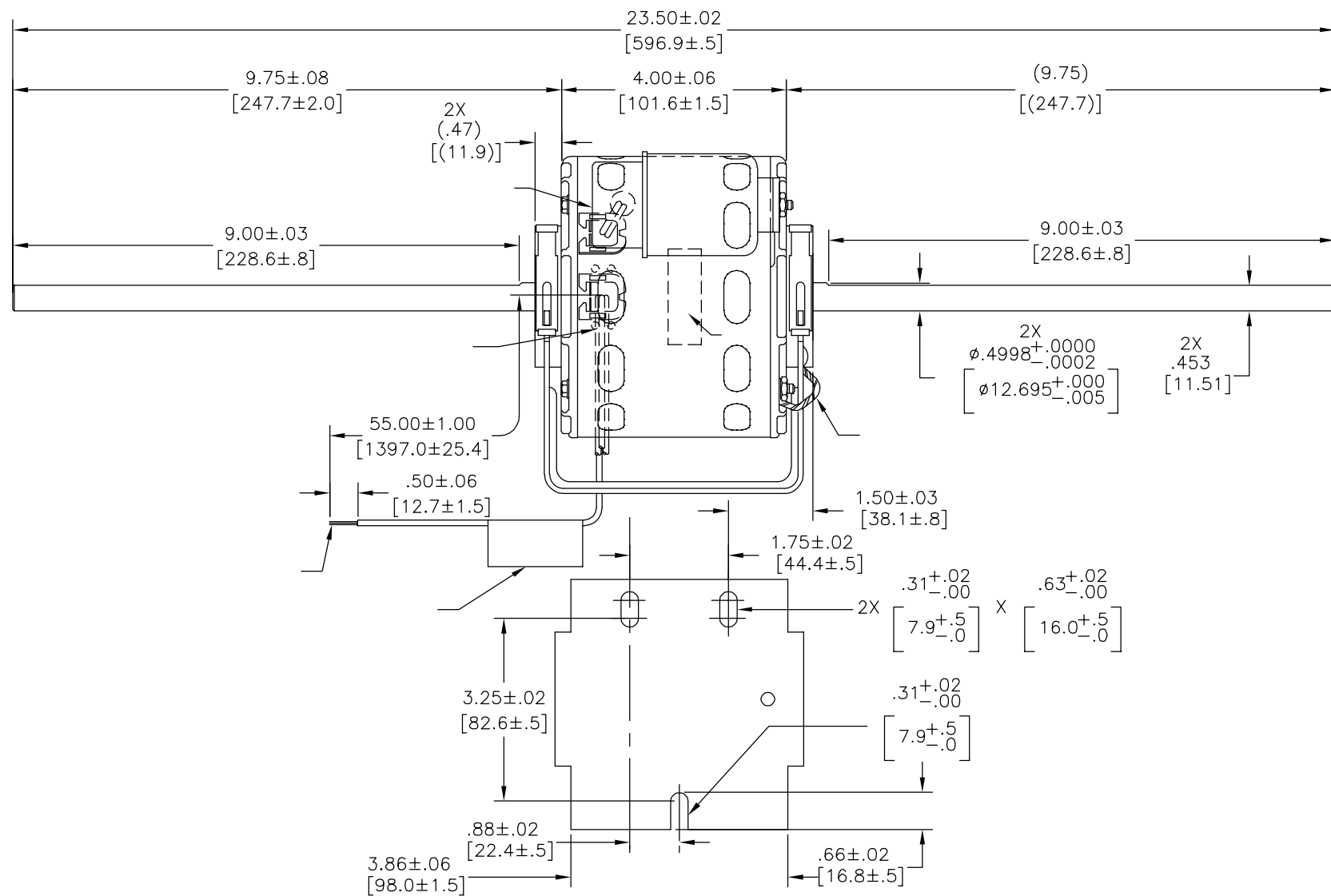
CARACTERISTICAS DE GEOMETRIA Y SIMBOLOS
 ▧ PLANICIDAD
 - RECTITUD
 < ANGULARIDAD
 ⊥ PERPENDICULARIDAD (A ESCUADRA)
 // PARALELISMO
 ○ REDONDEZ (CIRCULARIDAD)
 ∅ CILINDRICIDAD
 △ PERFIL DE CUALQUIER SUPERFICIE
 ∇ PERFIL DE CUALQUIER LINEA
 ↗ VARIACION
 ⊕ POSICION REAL
 ⊙ CONCENTRICIDAD
 = SIMETRIA
 ASME Y14.5M 1994

A MENOS QUE SE ESPECIFIQUE DE OTRA MANERA, LAS TOLERANCIAS DE LAS DIMS; SON LAS SIGUIENTES:
 PULG ±.1 ±.02 ±.005 ±.0005
 mm ±0.5 ±0.13 ±0.013
 ANG. ±.50 GRADOS
 ELIMINAR REBABAS Y ORILLAS FILOSAS DEL BORDE.
 PULG .003-.015 mm 0.1-0.4
 FILETEAR ESQUINA: PULG .020 mm 0.5
 MAQUINAR SUPERFICIES
 PULG 125 mm 3.2
 DIMS METRICAS MOSTRADAS [PARENTESIS]

DIBUJADO POR: JRUPER 09-22-2004
 APROBADO POR:
 TERCER ANGULO DE PROYECCION
 FECHA EDS: 11-11-2011
 REV. FORMATO: H
 CONFIDENCIAL: ESTE DIBUJO Y SU INFORMACION SON PROPIEDAD DE USO EXCLUSIVO Y CONFIDENCIAL DE REGAL-BELOIT CORPORATION. Y NO DEBERAN SER REVELADOS, DUPLICADOS, DISTRIBUIDOS O USARSE DE OTRA MANERA SIN EL CONSENTIMIENTO ESCRITO DE REGAL-BELOIT CORPORATION. -TODOS LOS DERECHOS RESERVADOS.

REGAL REGAL-BELOIT CORPORATION
 DESCRIPCION: MODEL-RFHP-42FR OUTLINE
 TAMAÑO: C NUMERO DE DIBUJO: DE2E7221
 ESCALA: NONE HOJA: 1

版本	ECO	编制	日期	批准	日期
D	0029018	J.AGUILERA	29-10-2012	D.BALDERRAMA	29-10-2012



Tipp City, OH
THERMALLY PROTECTED



SER. DATE & PO# PLT LTR MOD DE2E221N' []
 VOLTS 115 HZ 60 AMPS
 RPM 1500 SP PH CAP 5 MFD/370 VAC
 INS CLB AMB40°C HP AO
 BRG SLV ASSEMBLED IN MEXICO
 WH-COM BK-HI 1.2A 1/8HP
 BU-MED.7A 1/20HP RD-LOW .4A 1/30HP

63T7433-102

- 形位公差
 □ 平面度
 — 直线度
 < 倾斜度
 ⊥ 垂直度
 // 平行度
 ○ 圆度
 ⊙ 圆柱度
 △ 面轮廓度
 ∠ 线轮廓度
 ⊕ 圆跳动
 ⊕ 位置度
 ⊕ 同轴度
 ≡ 对称度

ASME Y14.5M 1994

除另有注明
 尺寸公差如下:
 英寸 X XX XXX XXXX
 毫米 ±.1 ±.02 ±.005 ±.0005
 角度 ±.50 度
 清理毛刺和尖棱
 英寸 .003-.015 毫米 0.1-0.4
 内圆角
 英寸 .020 毫米 0.5
 表面粗糙度
 英制 125 米制 3.2
 米制尺寸显示在 L]

绘图:	JRUPER	09-22-2004
批准:		
第三角投影		图纸格式发布日期 11-11-2011 图纸格式版本 H
机密: 本图纸及相关信息所有权归REGAL-BELOIT CORPORATION. 未经REGAL-BELOIT CORPORATION书面授权, 不得泄露、复制、传播或作其他用途。—版权所有		

REGAL REGAL-BELOIT CORPORATION	
名称	MODEL-RFHP-42FR OUTLINE
图幅	C
图号	DE2E7221
比例	NONE
页号	1