

PRODUCT INFORMATION PACKET



Model No: 9652

Catalog No: 9652

Fan Coil & Air Conditioner Motor, 1/10 HP, 1 Ph, 60 Hz, 208-230 V, 1500 RPM, 1 Speed, 42 Frame,
SEMI ENCL



Regal and Century are trademarks of Regal Rexnord Corporation or one of its affiliated companies.

©2023 Regal Rexnord Corporation, All Rights Reserved. MC017097E





Nameplate Specifications

Phase	1	Output HP	1/10 Hp
Output KW	0.07 kW	Voltage	208-230 V
Speed	1500 rpm	Service Factor	1
Frame	42Y	Enclosure	Semi Enclosed
Thermal Protection	Automatic	Ambient Temperature	40 °C
Frequency	60 Hz	Current	.7 A
Duty	Continuous Air Over	Insulation Class	B
UL	Recognized	CSA	Y
CE	N	Number of Speeds	1

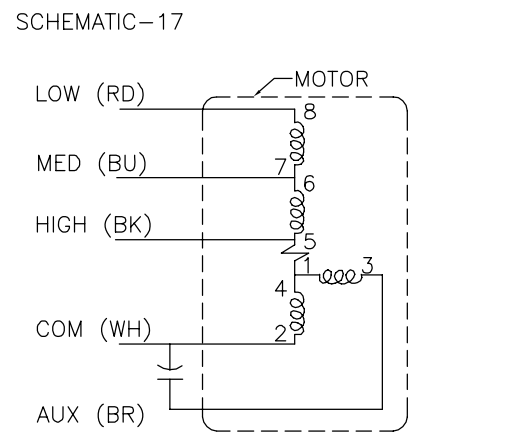
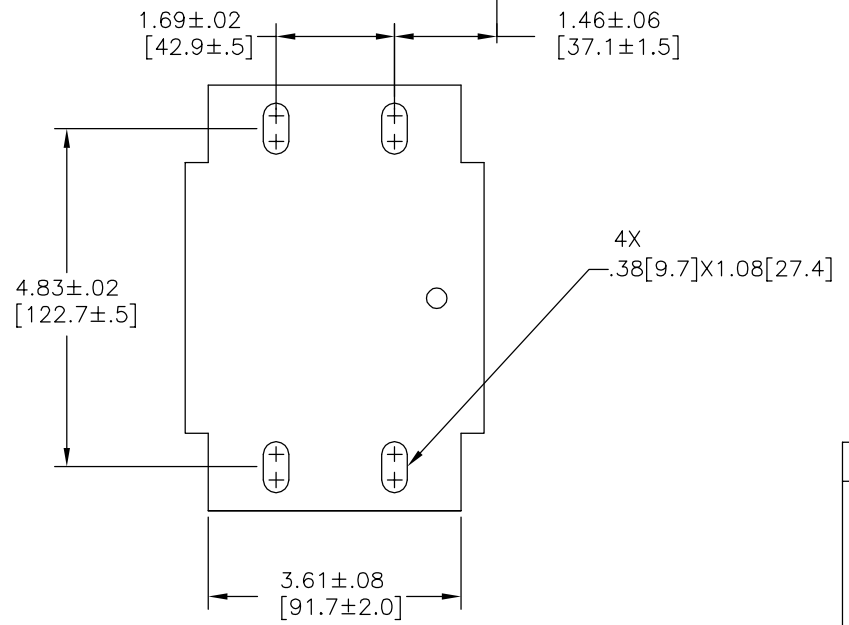
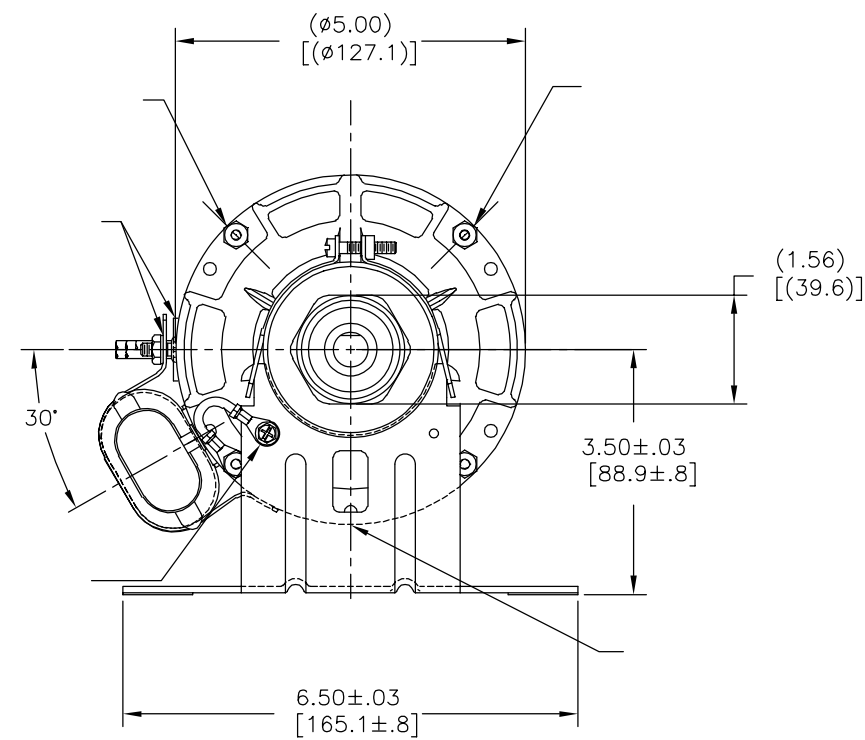
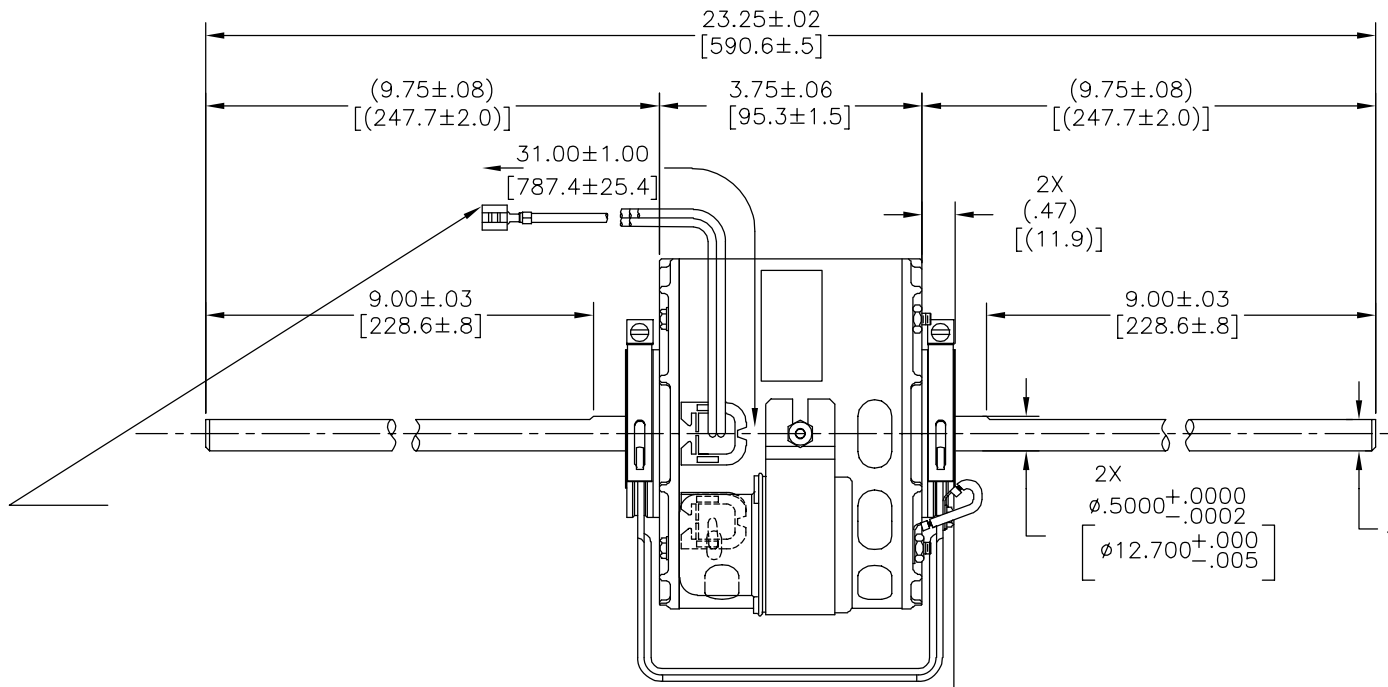
Technical Specifications

Electrical Type	Permanent Split Capacitor	Starting Method	Across The Line
Poles	4	Rotation	Counterclockwise Lead End
Mounting	Resilient Base	Motor Orientation	Horizontal
Drive End Bearing	Sleeve	Opp Drive End Bearing	Sleeve
Frame Material	Rolled Steel	Shaft Type	Flat
Overall Length	23.25 in	Frame Length	3.17 in
Shaft Diameter	0.500 in	Shaft Extension	9.8X.5X9.8 in
Outline Drawing	DE2D7204-S01		

This is an uncontrolled document once printed or downloaded and is subject to change without notice. Date Created:04/24/2023

4 3 2 1

版本	ECO	编制	日期	批准	日期
C	ECO-0036315	A.BAUGHMAN	08-08-2013	T.RILEY	08-08-2013



- 形位公差
- 平面度
- 直线度
- ∠ 倾斜度
- ⊥ 垂直度
- // 平行度
- 圆度
- ∅ 圆柱度
- ∠ 面轮廓度
- △ 线轮廓度
- ∩ 圆跳动
- ⊕ 位置度
- ⊙ 同轴度
- ≡ 对称度

ASME Y14.5M 1994

REGAL-BELOIT CORPORATION (RBC) 在个别领域为客户提供技术支持。鉴于RBC未收到任何涉及电机使用和应用环境的数据，电机的适用性由客户自己决定。

未注公差尺寸仅供参考。

ROT.: -CCWLE



Tipp City, OH
THERMALLY PROTECTED



SER. DATE & P0# PLT LTR MOD DE2D204N STK NO. 9652
VOLTS 208-230 HZ 60 AMPS .7
RPM 1500 SP PH1 CAP 4MFD/370VAC
INS CL AMB 40 °C HP1/10 CONT A0 ← ROT →
BRG SLV ASSEMBLED IN MEXICO

绘图:	AS	02-14-2011
批准:	BS	02-14-2011
第三角投影		图纸格式发布日期 11-11-2011 图纸格式版本 H
机密: 本图纸及相关信息所有权归REGAL-BELOIT CORPORATION。未经REGAL-BELOIT CORPORATION书面授权, 不得泄露、复制或传播作其他用途。—版权所有		

REGAL-BELOIT CORPORATION	
名称	MODEL-RFHP-42FR OUTLINE
图幅	C
图号	DE2D7204
比例	NONE
页号	1

D C B A

4 3 2 1

4

3

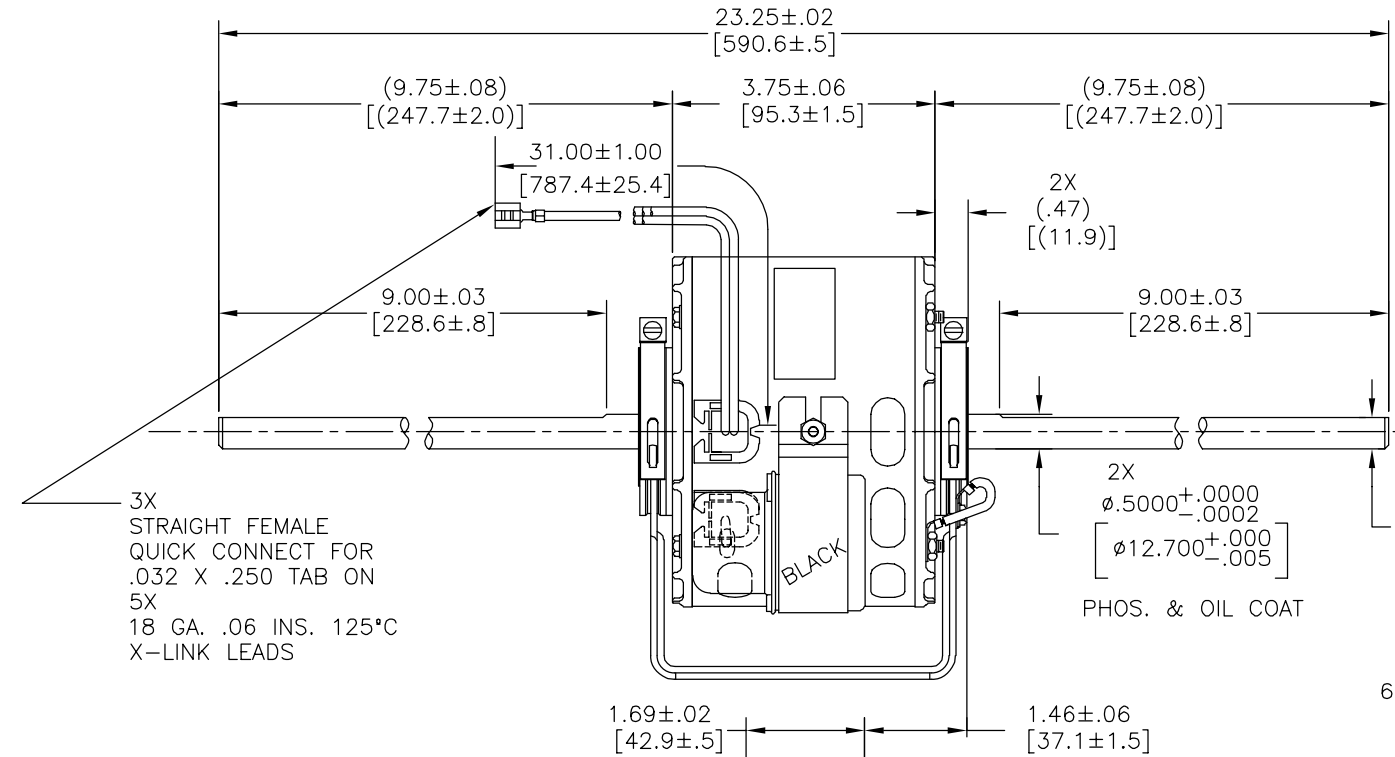
2

1

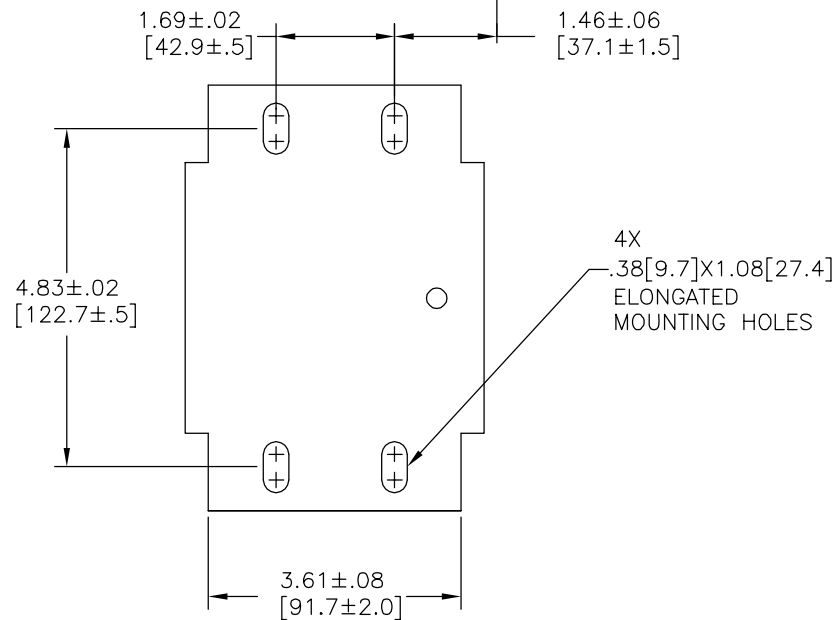
CUSTOMER IS SOLELY RESPONSIBLE FOR MOTOR PERFORMANCE AND SUITABILITY IN APPLICATIONS FOR CUSTOMER'S USES.

REV	ECO	REV BY	DATE	APPD	DATE
C	ECO-0036315	A.BAUGHMAN	08-08-2013	T.RILEY	08-08-2013

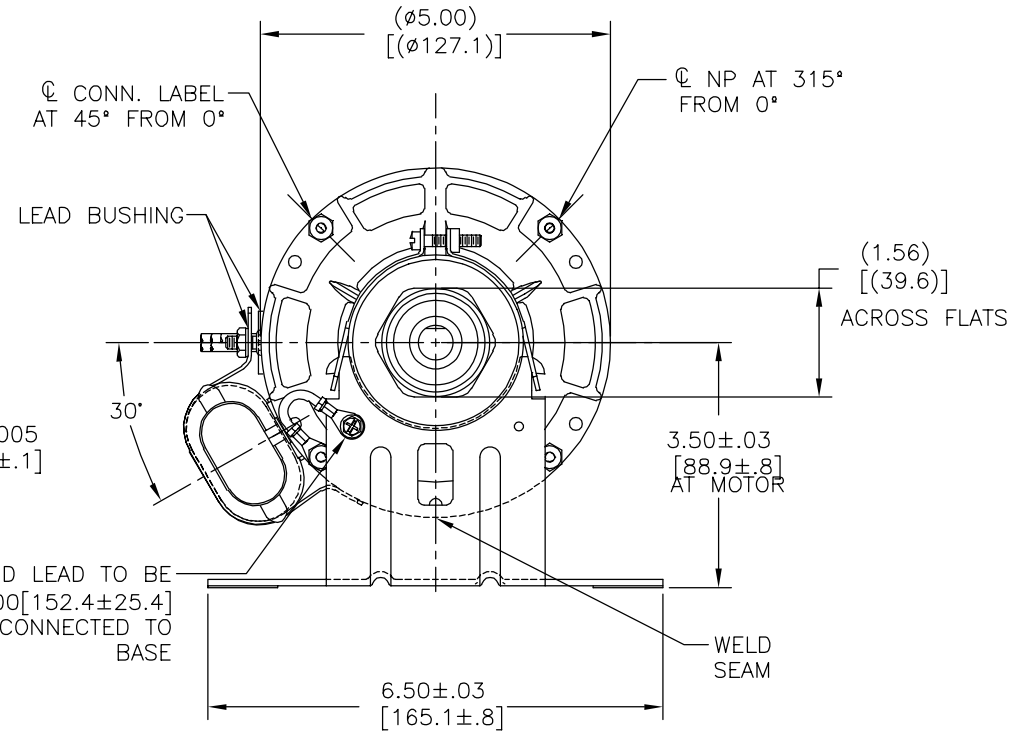
END PLAY .005[.13] MIN - .040[1.02] MAX
 MAX. SHAFT RUN OUT .001[.02] PER INCH
 MAX. RUN OUT NOT TO EXCEED .0075[.191]



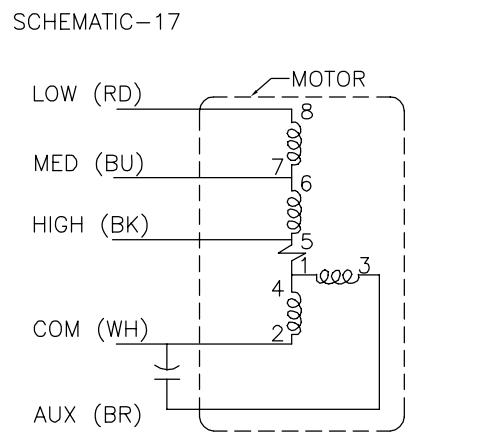
3X STRAIGHT FEMALE QUICK CONNECT FOR .032 X .250 TAB ON 5X 18 GA. .06 INS. 125°C X-LINK LEADS



NO. SAMPLE AVAILABLE
 CURVE #32365



GROUND LEAD TO BE 6.00±1.00[152.4±25.4] LONG CONNECTED TO BASE



GEOMETRIC CHARACTERISTICS & SYMBOLS
 ▧ FLATNESS
 - STRAIGHTNESS
 < ANGLARITY
 ⊥ PERPENDICULARITY (SQUARENESS)
 // PARALLELISM
 ○ ROUNDNESS (CIRCULARITY)
 ∅ CYLINDRICITY
 △ PROFILE OF ANY SURFACE
 ∩ PROFILE OF ANY LINE
 ∩ RUNOUT
 ⊕ TRUE POSITION
 ⊙ CONCENTRICITY
 ≡ SYMMETRY
 ASME Y14.5M 1994

REGAL-BELOIT CORPORATION (RBC) PROVIDES TECHNICAL ASSISTANCE TO OUR CUSTOMERS IN SEVERAL AREAS. SINCE RBC DOES NOT RECEIVE ALL DATA CONCERNING THE USE AND APPLICATION OF THE MOTOR, THE SUITABILITY OF THE MOTOR FOR THE APPLICATION MUST BE DETERMINED BY THE CUSTOMER.
 DIMENSIONS WITHOUT TOLERANCES ARE FOR REFERENCE ONLY.

ROT.: -CCWLE

NAMEPLATE DATA:

Century Tipp City, OH THERMALLY PROTECTED **SF** **RL**

SER. DATE & P0# PLT LTR MOD DE2D204N STK NO. 9652
 VOLTS 208-230 HZ 60 AMPS .7
 RPM1500 SP PH1 CAP 4MFD/370VAC
 INS CL AMB 40 °C HP1/10 CONT A0 ← ROT →
 BRG SLV ASSEMBLED IN MEXICO

CONNECTION LABEL 63T7432-213

DR BY:	AS	02-14-2011
APPD:	BS	02-14-2011
THIRD ANGLE PROJECTION	EDS DATE 11-11-2011	FORMAT REV H
CONFIDENTIAL: THIS DRAWING AND ITS INFORMATION ARE THE EXCLUSIVE AND CONFIDENTIAL PROPERTY OF REGAL-BELOIT CORPORATION AND ARE NOT TO BE DISCLOSED, DUPLICATED, DISTRIBUTED OR OTHERWISE USED WITHOUT THE WRITTEN CONSENT OF REGAL-BELOIT CORPORATION. -ALL RIGHTS RESERVED.		

REGAL REGAL-BELOIT CORPORATION	
DESCRIPTION	
MODEL-RFHP-42FR OUTLINE	
SIZE C	DWG NO DE2D7204
SCALE NONE	SHEET 1

4

3

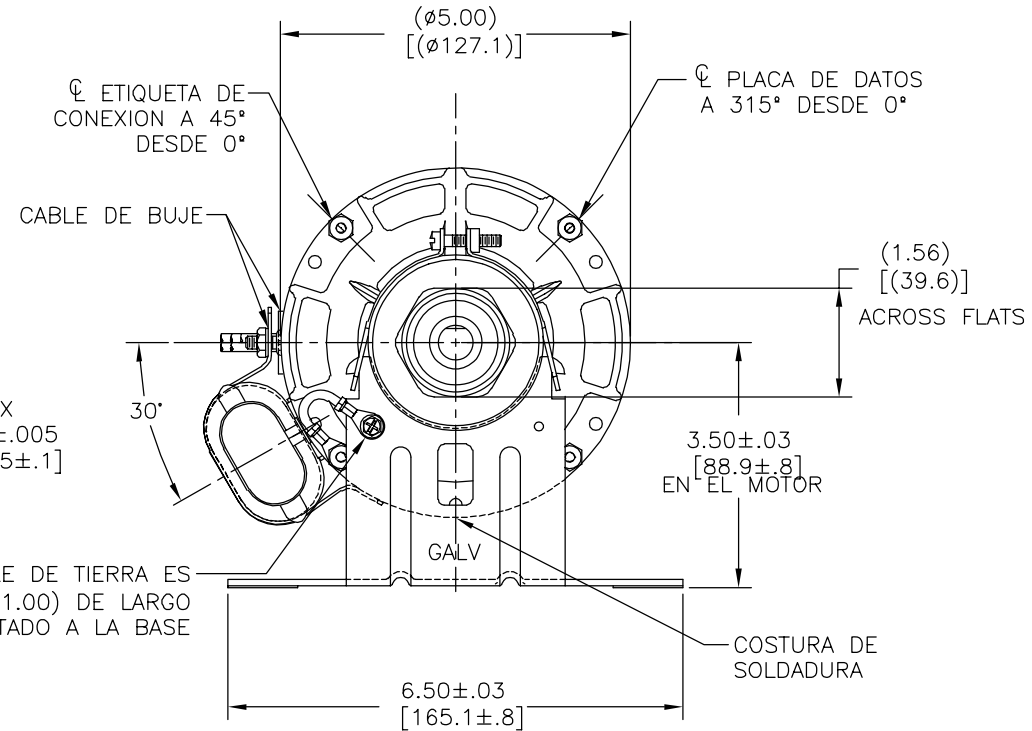
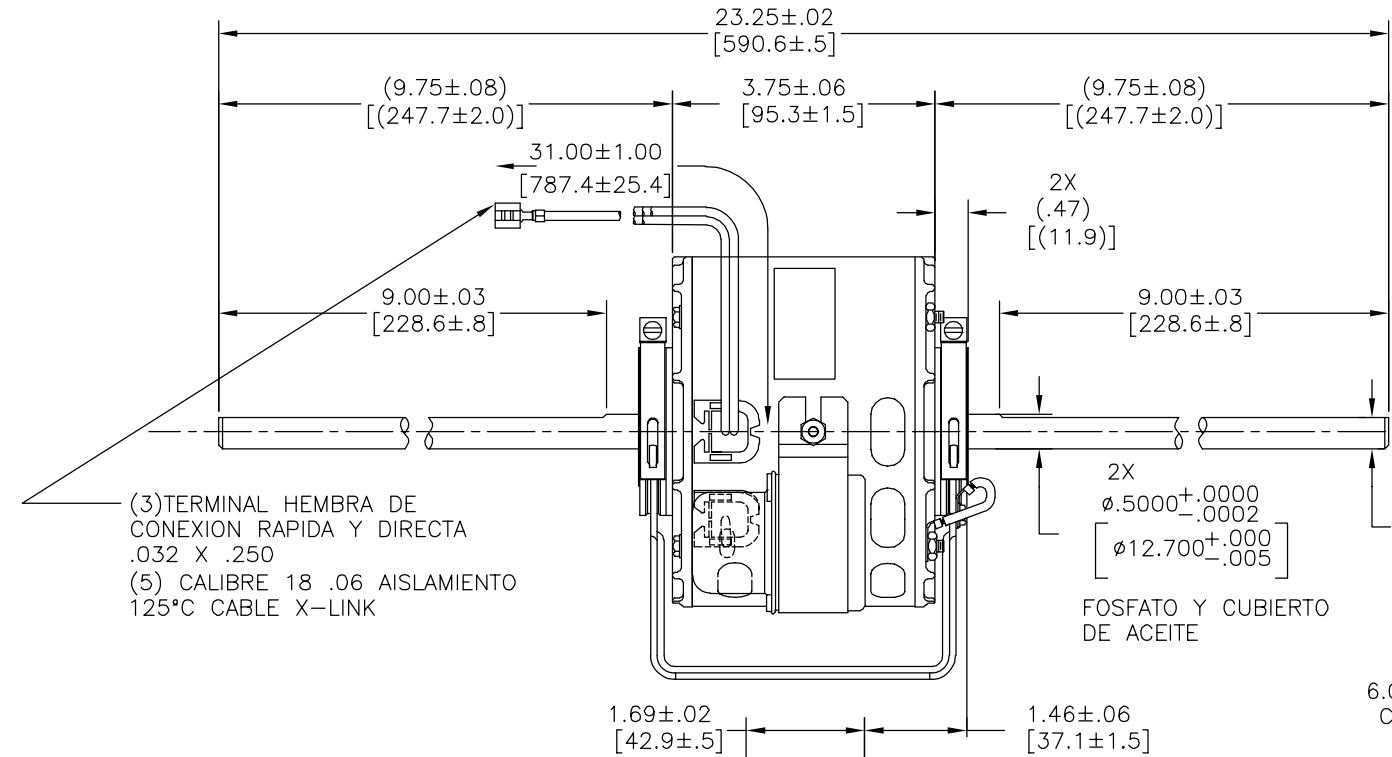
2

1

SOLO EL CLIENTE ES RESPONSABLE POR EL DESEMPEÑO DEL MOTOR Y LAS CONVENIENTES APLICACIONES PARA EL USO DEL CLIENTE.

REVISION:	ECO	REVISADO POR:	FECHA:	APROBADO POR:	FECHA:
C	ECO-0036315	A.BAUGHMAN	08-08-2013	T.RILEY	08-08-2013

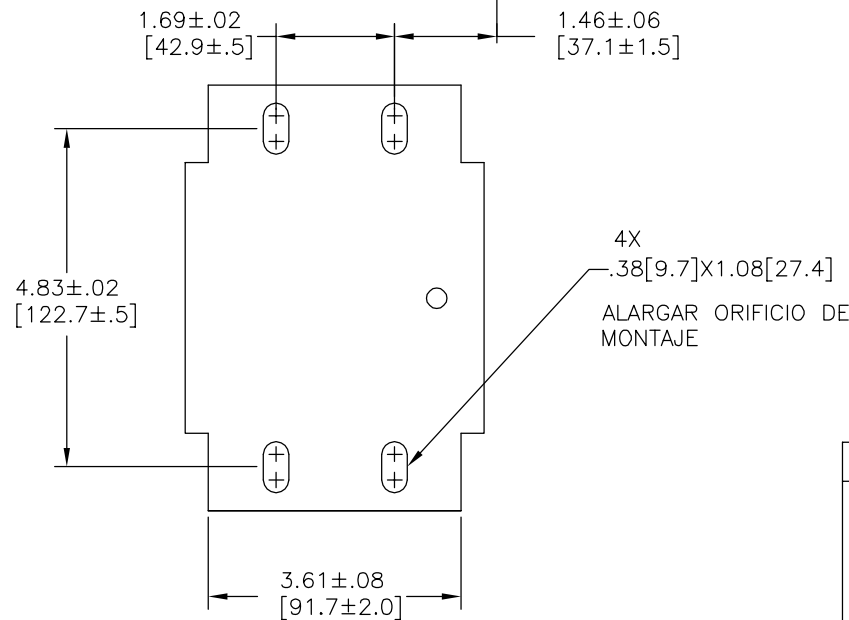
JUEGO AXIAL .005[.13] MIN .040[1.02] MAX
 MAX. OSILACION DE FLECHA .001[.02] SEGUN LAS PLGS
 MAX. LA OSILACION NO EXCEDER DE .0075[.191]



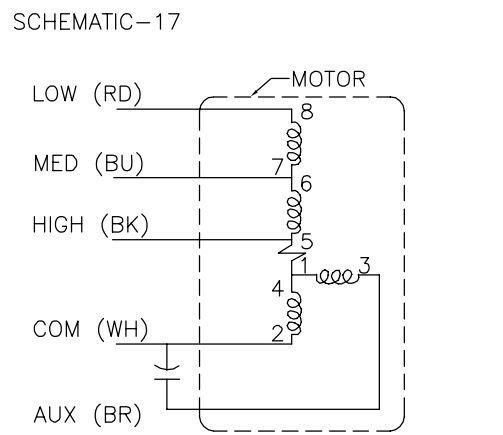
(3) TERMINAL HEMBRA DE CONEXION RAPIDA Y DIRECTA .032 X .250
 (5) CALIBRE 18 .06 AISLAMIENTO 125°C CABLE X-LINK

2X ø.5000+0.0000/-0.0002 [ø12.700+0.000/-0.005]
 FOSFATO Y CUBIERTO DE ACEITE

2X .453±.005 [11.5±.1]
 CABLE DE TIERRA ES 6.00''(±1.00) DE LARGO CONECTADO A LA BASE



ETIQUETA DE CONEXION 63T7432-213



NUM DE MUESTRA DISPONIBLE PARA CURVA #32365

CARACTERISTICAS DE GEOMETRIA Y SIMBOLOS
 □ PLANICIDAD
 — RECTITUD
 ∠ ANGULARIDAD
 ⊥ PERPENDICULARIDAD (A ESCUADRA)
 // PARALELISMO
 ○ REDONDEZ (CIRCULARIDAD)
 ∅ CILINDRICIDAD
 △ PERFIL DE CUALQUIER SUPERFICIE
 ∩ PERFIL DE CUALQUIER LINEA
 ∩ VARIACION
 ⊕ POSICION REAL
 ⊙ CONCENTRICIDAD
 = SIMETRIA
 ASME Y14.5M 1994

REGAL-BELOIT CORPORATION (RBC) PROVEE ASISTENCIA TECNICA A NUESTROS CLIENTES EN VARIAS AREAS. DESDE QUE RBC NO RECIBE TODOS LOS DATOS EN RELACION AL USO Y A LA APLICACION DEL MOTOR, LA APLICACION ADECUADA DEL MOTOR DEBE SER DETERMINADA POR EL CLIENTE.

DIMENSIONES SIN TOLERANCIA SON DE REFERENCIA SOLAMENTE

ROT.: -CCWLE

ETIQUETA DE DATOS:



Tipp City, OH
 THERMALLY PROTECTED



SER. DATE & P0# PLT LTR MOD DE2D204N STK NO. 9652
 VOLTS 208-230 HZ 60 AMPS .7
 RPM1500 SP PH1 CAP 4MFD/370VAC
 INS CL AMB 40 °C HP1/10 CONT AO ← ROT →
 BRG SLV ASSEMBLED IN MEXICO

DIBUJADO POR:	AS	02-14-2011
APROBADO POR:	BS	02-14-2011
TERCER ANGULO DE PROYECCION	⊕	FECHA EDS: 11-11-2011 REV. FORMATO: H
CONFIDENCIAL: ESTE DIBUJO Y SU INFORMACION SON PROPIEDAD DE USO EXCLUSIVO Y CONFIDENCIAL DE REGAL-BELOIT CORPORATION. Y NO DEBERAN SER REVELADOS, DUPLICADOS, DISTRIBUIDOS O USARSE DE OTRA MANERA SIN EL CONSENTIMIENTO ESCRITO DE REGAL-BELOIT CORPORATION. -TODOS LOS DERECHOS RESERVADOS.		

REGAL REGAL-BELOIT CORPORATION

DESCRIPCION:
 MODEL-RFHP-42FR
 OUTLINE

TAMAÑO: C NUMERO DE DIBUJO: DE2D7204

ESCALA: NONE HOJA: 1