

PRODUCT INFORMATION PACKET



Model No: 9662
Catalog No: 9662

Refrigeration Motor, 1/20 HP, 1 Ph, 60 Hz, 208-230 V, 1550 RPM, 1 Speed, 3.3" Diameter, OAO



Regal and Century are trademarks of Regal Rexnord Corporation or one of its affiliated companies.
©2026 Regal Rexnord Corporation, All Rights Reserved. MC017097E





Nameplate Specifications

Phase	1	Output HP	1/20 Hp
Output KW	0.04 kW	Voltage	208-230 V
Speed	1550 rpm	Service Factor	1.0
Frame	3.3	Enclosure	Open Air Over
Thermal Protection	Thermally Protected	Ambient Temperature	40 °C
Frequency	60 Hz	Current	1.0 A
Duty	Air Over	Insulation Class	B
UL	Recognized	CSA	Y
CE	N	Number of Speeds	1

Technical Specifications

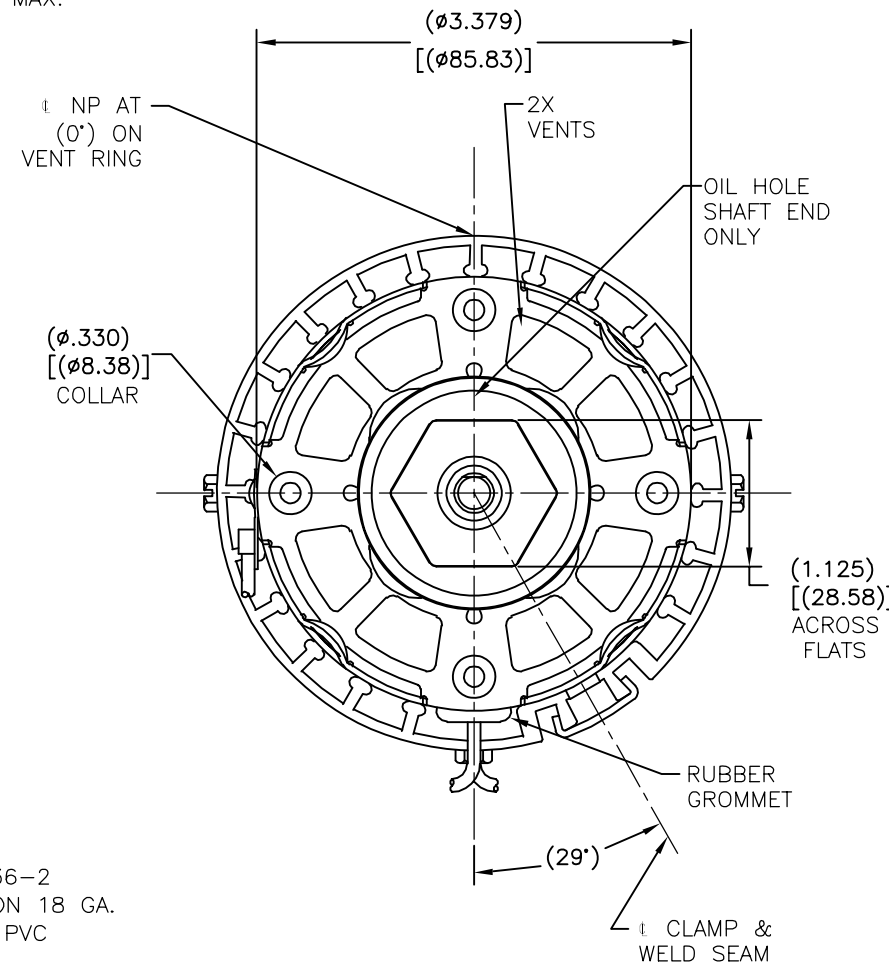
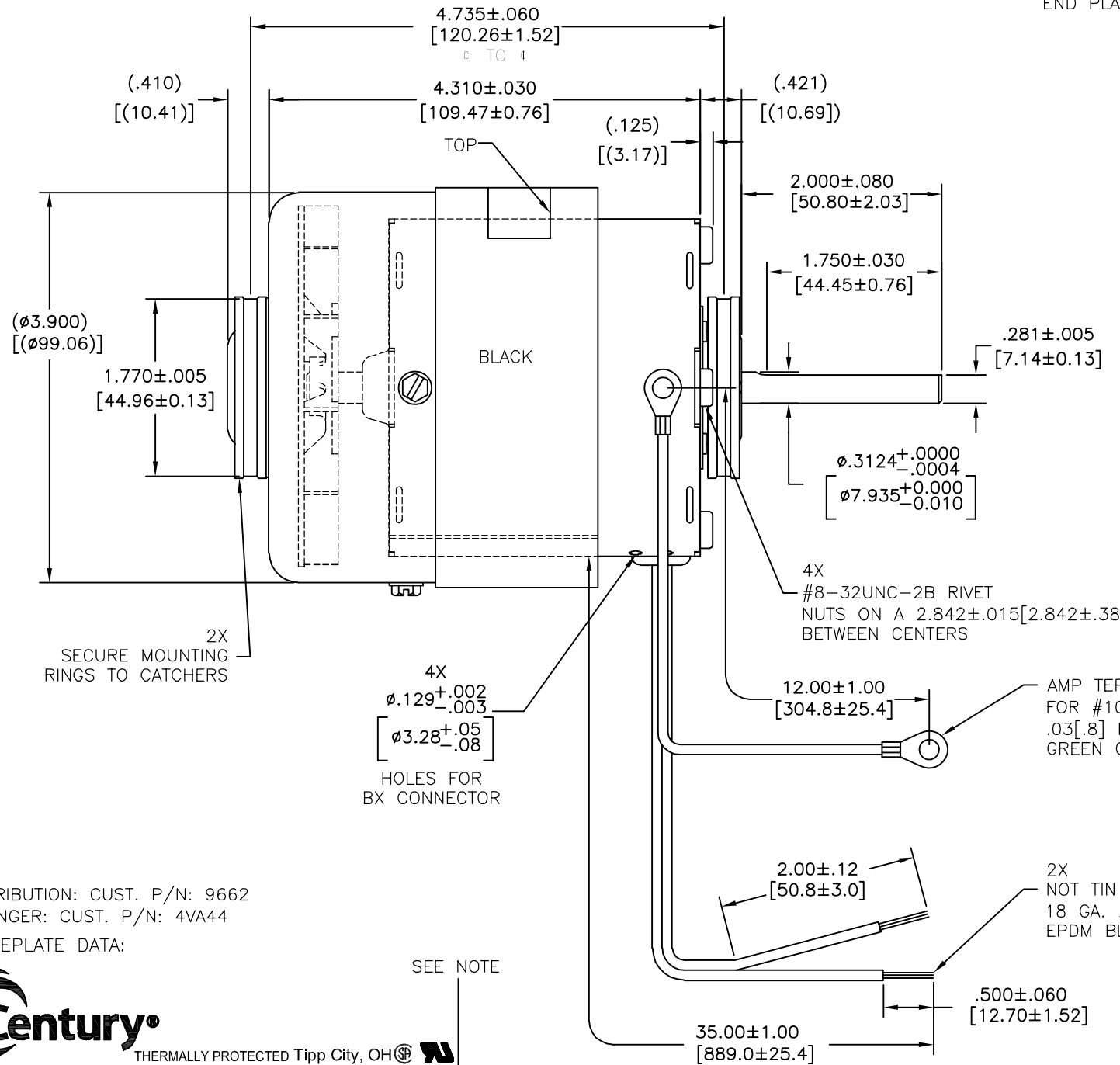
Electrical Type	Shaded Pole	Starting Method	Across The Line
Poles	4	Rotation	Clockwise Shaft End
Mounting	Resilient Rings	Drive End Bearing	Sleeve
Opp Drive End Bearing	Sleeve	Frame Material	Rolled Steel
Shaft Type	Flat	Frame Length	4.31 in
Shaft Diameter	0.312 in	Shaft Extension	2 in
Outline Drawing	JA2R353-S01		

This is an uncontrolled document once printed or downloaded and is subject to change without notice. Date Created:01/07/2026

CUSTOMER IS SOLELY RESPONSIBLE FOR MOTOR PERFORMANCE AND SUITABILITY IN APPLICATIONS FOR CUSTOMER'S USES

REV	ECO	REV BY	DATE	APPD	DATE
N	0027414	A. ARREOLA	07-16-2012	G. ALVIDREZ	07-16-2012

END PLAY .04[1.0] MAX.



NOTE:
DISTRIBUTION: CUST. P/N: 9662
GRAINGER: CUST. P/N: 4VA44
NAMEPLATE DATA:



208-230V 60HZ 1.0A 1550RPM 1/20HP A.O.
CLASS B. INS. MAX. AMB. 40°C
ASSEMBLED IN MEXICO ← ROTATION →

AMP TERM #350436-2 FOR #10 SCREW ON 18 GA. .03[.8] INS 105°C PVC GREEN GROUND

2X NOT TIN DIPPED 18 GA. .06[1.5] INS. 125°C EPDM BLACK RIPCORD

ELECTRICALLY PER SAMPLE 0442571B

CWLE-CWSE

SHIP SEPARATE: 2500376-001 BAG ASSY

AFTERMARKET STOCK NO. 9662

GEOMETRIC CHARACTERISTICS & SYMBOLS	
▭	FLATNESS
-	STRAIGHTNESS
∠	ANGULARITY
⊥	PERPENDICULARITY (SQUARENESS)
∥	PARALLELISM
○	ROUNDNESS (CIRCULARITY)
⊘	CYLINDRICITY
△	PROFILE OF ANY SURFACE
∩	PROFILE OF ANY LINE
↗	RUNOUT
⊕	TRUE POSITION
◎	CONCENTRICITY
≡	SYMMETRY

UNLESS OTHERWISE SPECIFIED DIM. TOLERANCES ARE AS FOLLOWS:	
INCH	±.1 ±.02 ±.005 ±.0005
mm	±0.5 ±0.13 ±0.013
ANG. ±.50 DEG	
REMOVE BURRS & BREAK SHARP EDGES:	
INCH	.003-.015
mm	0.1-0.4
CORNER FILLETS TO:	
INCH	.020
mm	0.5
MACHINE SURFACES:	
INCH	125
mm	3.2
METRIC DIMS. SHOWN IN [BRACKETS]	

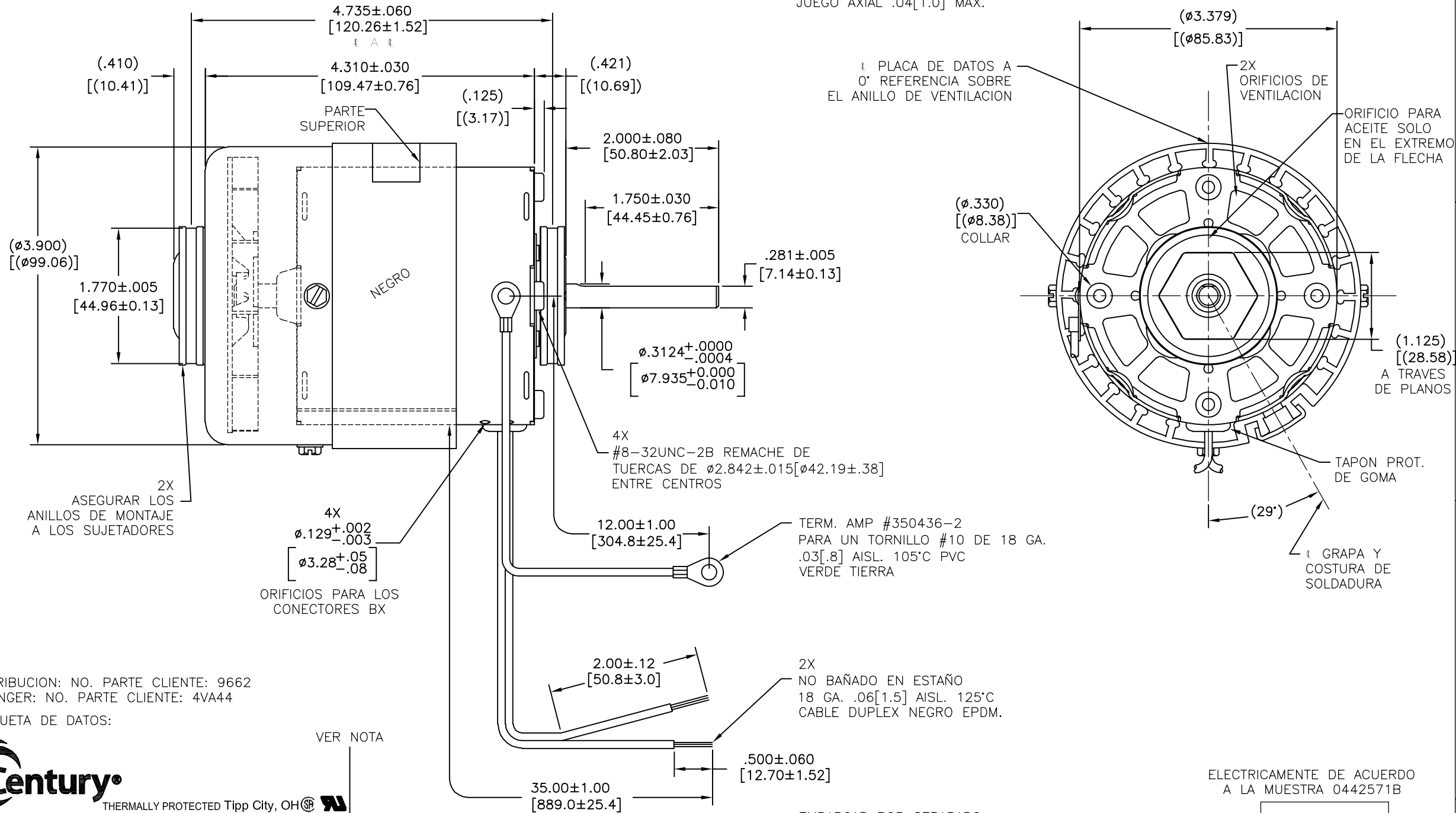
DR BY:	TGARET	08-09-2004
APPD:	SWEBER	07-20-2005
THIRD ANGLE PROJECTION	EDS DATE 11-11-2011 FORMAT REV H	
CONFIDENTIAL: THIS DRAWING AND ITS INFORMATION ARE THE EXCLUSIVE AND CONFIDENTIAL PROPERTY OF REGAL-BELOIT CORPORATION AND ARE NOT TO BE DISCLOSED, DUPLICATED, DISTRIBUTED OR OTHERWISE USED WITHOUT THE WRITTEN CONSENT OF REGAL-BELOIT CORPORATION. -ALL RIGHTS RESERVED.		

REGAL REGAL-BELOIT CORPORATION	
DESCRIPTION	
MODEL-SFHP-3.3 OUTLINE	
SIZE	DWG NO
C	JA2R353
SCALE	SHEET
NONE	1

EL CLIENTE ES SOLO RESPONSABLE DEL RENDIMIENTO DEL MOTOR Y APLICACIONES CONVENIENTES PARA LOS USOS DEL CLIENTE.

REVISION:	ECO	REVISADO POR:	FECHA:	APROBADO POR:	FECHA:
N	0027414	A. ARREOLA	07-16-2012	G. ALVIDREZ	07-16-2012

JUEGO AXIAL .04[1.0] MAX.



NOTA:
DISTRIBUCION: NO. PARTE CLIENTE: 9662
GRAINGER: NO. PARTE CLIENTE: 4VA44
ETIQUETA DE DATOS:



SER.DATE, PLT MOD JA2R353N+
208-230V 60HZ 1.0A 1550RPM 1/20HP A.O.
CLASS B. INS. MAX. AMB. 40°C
ASSEMBLED IN MEXICO ← ROTATION →

CARACTERISTICAS DE GEOMETRIA Y SIMBOLOS	
□	PLANICIDAD
-	RECTITUD
∠	ANGULARIDAD
⊥	PERPENDICULARIDAD (A ESQUADRA)
//	PARALELISMO
○	REDONDEZ (CIRCULARIDAD)
⊘	CILINDRICIDAD
△	PERFIL DE CUALQUIER SUPERFICIE
∧	PERFIL DE CUALQUIER LINEA
∧	VARIACION
+	POSICION REAL
◎	CONCENTRICIDAD
≡	SIMETRIA

A MENOS QUE SE ESPECIFIQUE DE OTRA MANERA, LAS TOLERANCIAS DE LAS DIMS; SON LAS SIGUIENTES:	
PULG	±.1 ±.02 ±.005 ±.0005
mm	±0.5 ±0.13 ±0.013
ANG. ±.50 GRADOS	
ELIMINAR REBABAS Y ORILLAS FILOSAS DEL BORDE.	
PULG	.003-.015 mm 0.1-0.4
FILETEAR ESQUINA: PULG .020 mm 0.5	
MAQUINAR SUPERFICIES	
PULG	125 mm .32
DIMS METRICAS MOSTRADAS [PARENTESIS]	

DIBUJADO POR:	TGARET	08-09-2004
APROBADO POR:	SWEBER	07-20-2005
TERCER ANGULO DE PROYECCION	⊕	FECHA EDS: 11-11-2011
CONFIDENCIAL: ESTE DIBUJO Y SU INFORMACION SON PROPIEDAD DE USO EXCLUSIVO Y CONFIDENCIAL DE REGAL-BELOIT CORPORATION. Y NO DEBERAN SER REVELADOS, DUPLICADOS, DISTRIBUIDOS O USARSE DE OTRA MANERA SIN EL CONSENTIMIENTO ESCRITO DE REGAL-BELOIT CORPORATION. -TODOS LOS DERECHOS RESERVADOS.		REV. FORMATO: H

REGAL REGAL-BELOIT CORPORATION	
DESCRIPCION: MODEL-SFHP-3.3 OUTLINE	
TAMAÑO: C	NUMERO DE DIBUJO: JA2R353
ESCALA: NONE	HOJA: 1

4

3

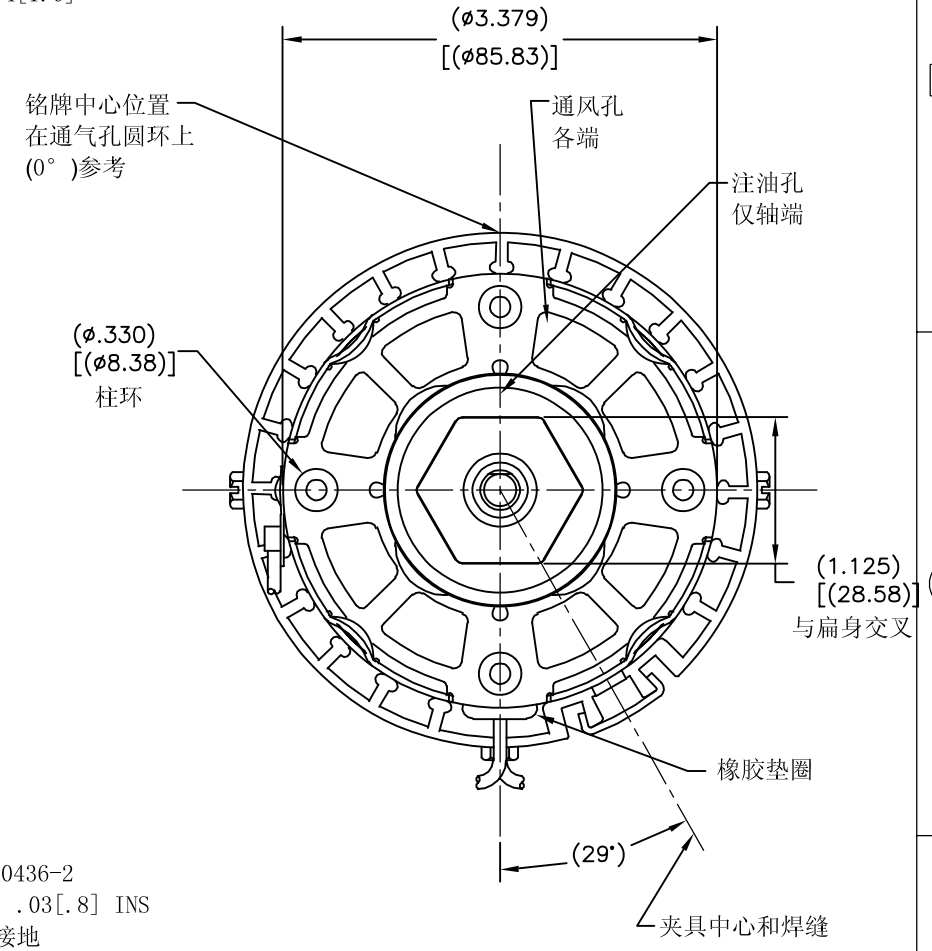
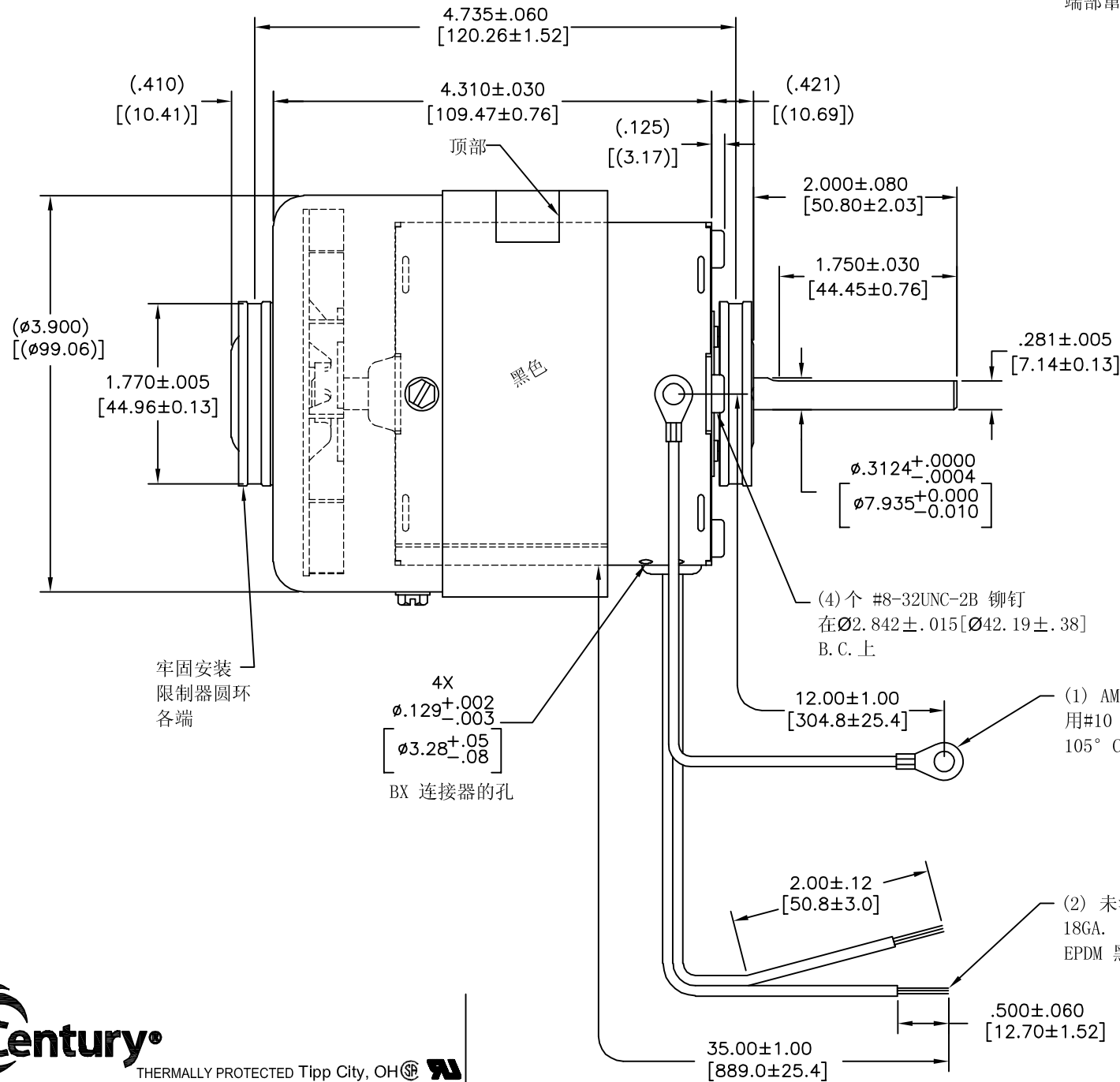
2

1

用户对用户使用的电机的性能
和应用适应性单独负责。

版本	ECO	编制	日期	批准	日期
N	0027414	A. ARREOLA	07-16-2012	G. ALVIDREZ	07-16-2012

端部窜动量最大.04[1.0]



SER.DATE, PLT MOD JA2R353N+
208-230V 60HZ 1.0A 1550RPM 1/20HP A.O.
CLASS B. INS. MAX. AMB. 40°C
ASSEMBLED IN MEXICO ← ROTATION →

电气数据参考
样机 0442571B

形位公差	除另有注明 尺寸公差如下:
□ 平面度	英寸 X XX XXX XXXX
— 直线度	英寸 ±.1 ±.02 ±.005 ±.0005
∠ 倾斜度	毫米 ±0.5 ±0.13 ±0.013
⊥ 垂直度	角度 ±.50 度
// 平行度	清理毛刺和尖棱
○ 圆度	英寸 .003-.015 毫米 0.1-0.4
⊘ 圆柱度	内圆角
△ 面轮廓度	英寸 .020 毫米 0.5
∇ 线轮廓度	表面粗糙度
∧ 圆跳动	英制 125 米制 3.2
⊕ 位置度	
◎ 同轴度	
≡ 对称度	

ASME Y14.5M 1994

除另有注明 尺寸公差如下:	英寸 X XX XXX XXXX
英寸 ±.1 ±.02 ±.005 ±.0005	
毫米 ±0.5 ±0.13 ±0.013	
角度 ±.50 度	
清理毛刺和尖棱	
英寸 .003-.015 毫米 0.1-0.4	
内圆角	
英寸 .020 毫米 0.5	
表面粗糙度	
英制 125 米制 3.2	

绘图:	TGARET	08-09-2004
批准:	SWEBER	07-20-2005
第三角投影	⊕	图纸格式发布日期 11-11-2011 图纸格式版本 H
机密: 本图纸及相关信息所有权归REGAL-BELOIT CORPORATION. 未经REGAL-BELOIT CORPORATION书面授权, 不得泄露、 复制、传播或作其他用途。—版权所有		

REGAL REGAL-BELOIT CORPORATION	
名称	MODEL-SFHP-3.3 OUTLINE
图幅	C
图号	JA2R353
比例	NONE
页号	1

4

3

2

1