

PRODUCT INFORMATION PACKET



Model No: 9671

Catalog No: 9671

Fan Coil & Air Conditioner Motor, 1/8 HP, 1 Ph, 60 Hz, 115 V, 1500 RPM, 3 Speed, 42 Frame, OAO



Regal and Century are trademarks of Regal Rexnord Corporation or one of its affiliated companies.
©2022 Regal Rexnord Corporation, All Rights Reserved. MC017097E





Nameplate Specifications

Output HP	1/8 Hp	Output KW	0.10 kW
Frequency	60 Hz	Voltage	115 V
Current	5.5 A	Speed	1500 rpm
Service Factor	1	Phase	1
Duty	Air Over	Insulation Class	B
Frame	42Y	Enclosure	Open Air Over
Thermal Protection	Automatic	Ambient Temperature	40 °C
UL	Recognized	CSA	Y
CE	N	Number of Speeds	3

Technical Specifications

Electrical Type	Permanent Split Capacitor	Starting Method	Across The Line
Poles	4	Rotation	Counterclockwise Lead End
Mounting	Extended Studs	Motor Orientation	Horizontal
Drive End Bearing	Sleeve	Opp Drive End Bearing	Sleeve
Frame Material	Rolled Steel	Shaft Type	Flat
Overall Length	20.75 in	Frame Length	3.42 in
Shaft Diameter	0.375 in	Shaft Extension	8.4X.38X8.4 in
Outline Drawing	DA2F7098-S01		

This is an uncontrolled document once printed or downloaded and is subject to change without notice. Date Created:11/29/2022

4

3

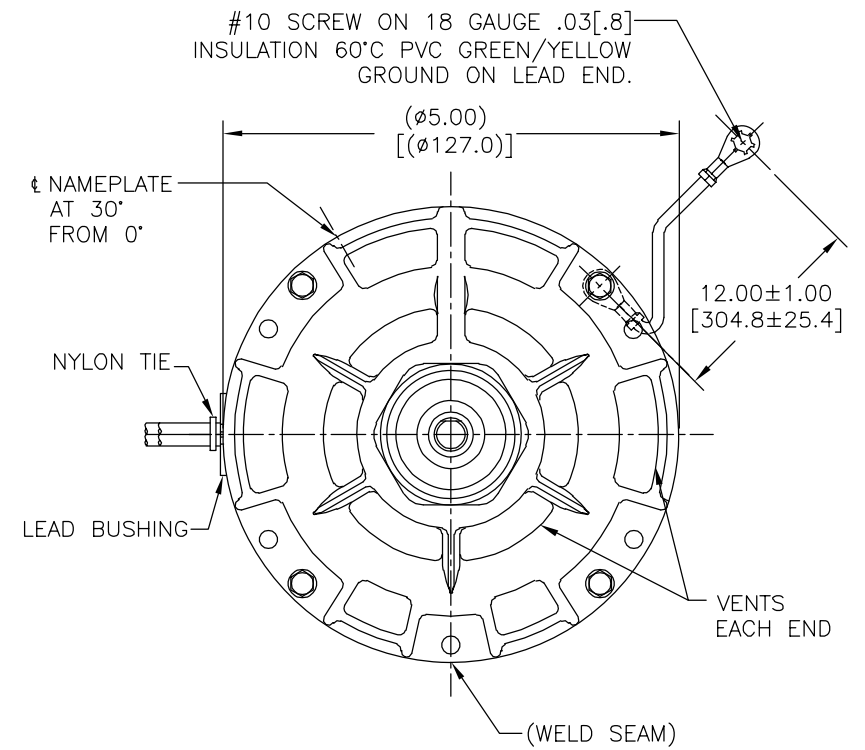
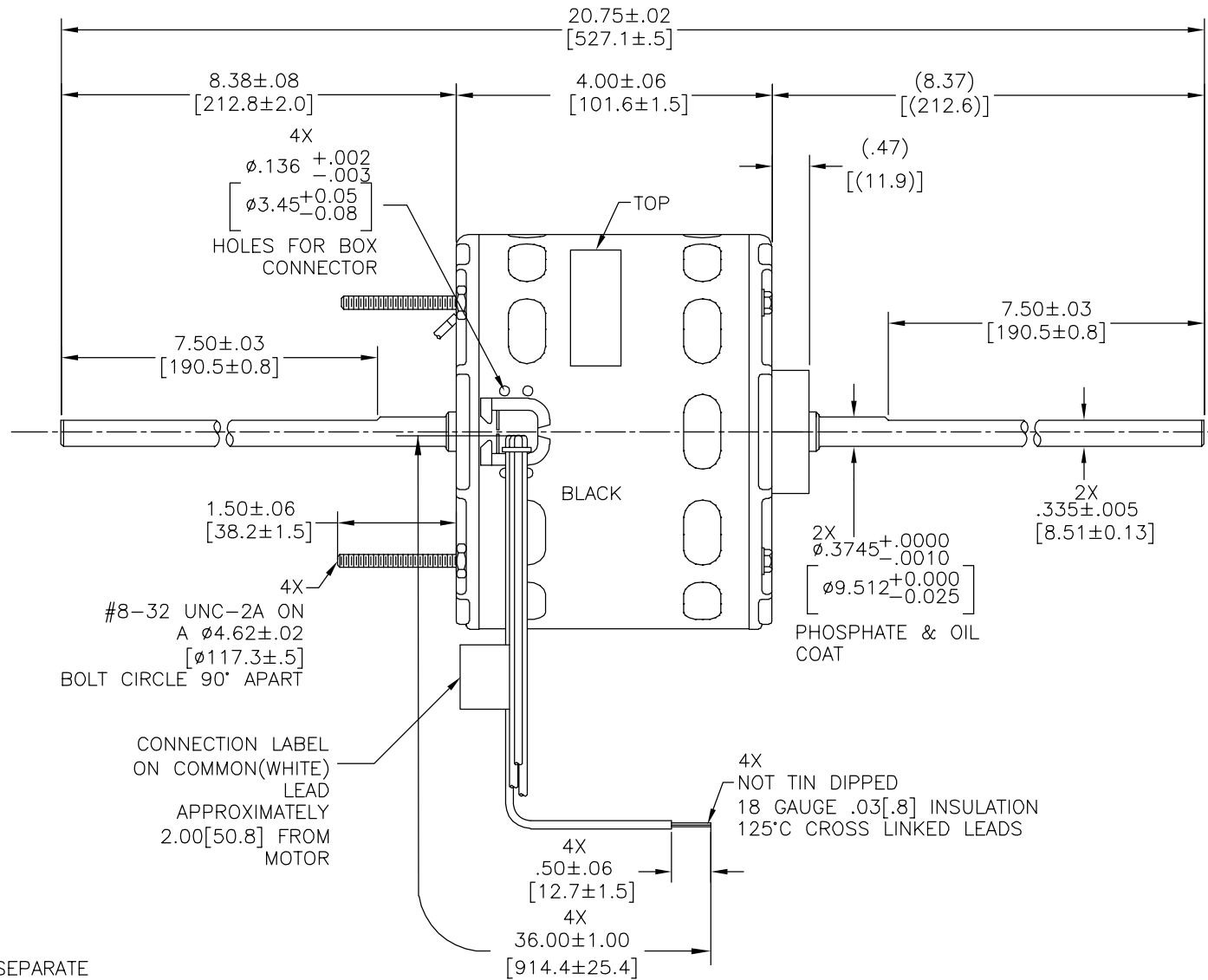
2

1

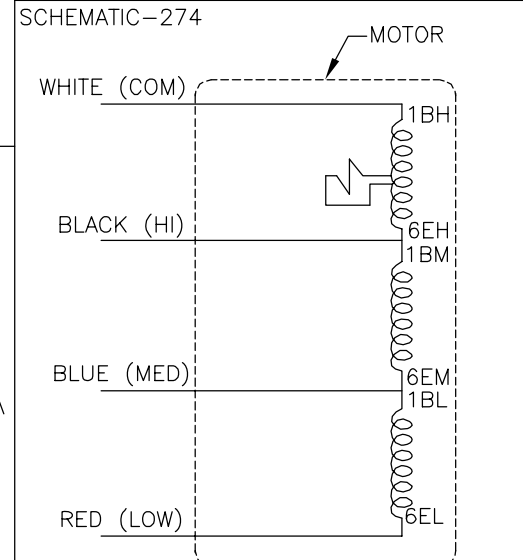
CUSTOMER IS SOLELY RESPONSIBLE FOR MOTOR PERFORMANCE AND SUITABILITY IN APPLICATIONS FOR CUSTOMER'S USES.

REV	ECO	REV BY	DATE	APPD	DATE
F	0029021	E.SINECIO	10-18-2012	G.ALVIDREZ	10-18-2012

END PLAY .005 MINIMUM - .040[1.02] MAXIMUM
 MAXIMUM SHAFT RUN OUT .001[.03] PER INCH
 MAXIMUM RUN OUT NOT TO EXCEED .010[.25]



SHIP SEPARATE
 72T7176A-66
 BAG ASSEMBLY



DISTRIBUTION PART NUMBER: 9671
 GRAINGER PART NUMBER: 4UU40

ROT: CCWLE

NAMEPLATE DATA:

Tipp City, OH
 THERMALLY PROTECTED

SER. DATE & PO# PLT LTR MOD DA2F098N' []
 VOLTS 115 HZ 60/50 AMPS 5.5
 RPM 1500 SP 3 PH 1 CAP ← ROTATION
 INS CL B AMB 40°C HP 1/8 CONT. A.O.
 BRG SLV ASSEMBLED IN MEXICO

GEOMETRIC CHARACTERISTICS & SYMBOLS

- FLATNESS
- STRAIGHTNESS
- ∠ ANGULARITY
- ⊥ PERPENDICULARITY (SQUARENESS)
- // PARALLELISM
- ROUNDNESS (CIRCULARITY)
- ⊘ CYLINDRICITY
- △ PROFILE OF ANY SURFACE
- ∩ PROFILE OF ANY LINE
- ↯ RUNOUT
- ⊕ TRUE POSITION
- ◎ CONCENTRICITY
- ≡ SYMMETRY

ASME Y14.5M 1994

UNLESS OTHERWISE SPECIFIED DIM. TOLERANCES ARE AS FOLLOWS:

INCH	±.1	±.02	±.005	±.0005
mm	±0.5	±0.13	±0.013	

ANG. ±.50 DEG
 REMOVE BURRS & BREAK SHARP EDGES:
 INCH .003-.015 mm 0.1-0.4
 CORNER FILLETS TO:
 INCH .020 mm 0.5
 MACHINE SURFACES:
 INCH 125 mm 3.2

METRIC DIMS. SHOWN IN [BRACKETS]

DR BY: J.RUPERT 09-08-2004

APPD:

THIRD ANGLE PROJECTION

EDS DATE 11-11-2011
 FORMAT REV H

CONFIDENTIAL: THIS DRAWING AND ITS INFORMATION ARE THE EXCLUSIVE AND CONFIDENTIAL PROPERTY OF REGAL-BELOIT CORPORATION AND ARE NOT TO BE DISCLOSED, DUPLICATED, DISTRIBUTED OR OTHERWISE USED WITHOUT THE WRITTEN CONSENT OF REGAL-BELOIT CORPORATION. -ALL RIGHTS RESERVED.

REGAL REGAL-BELOIT CORPORATION

DESCRIPTION: MODEL-RFHP-42FR OUTLINE

SIZE: C DWG NO: DA2F7098

SCALE: NONE SHEET: 1

4

3

2

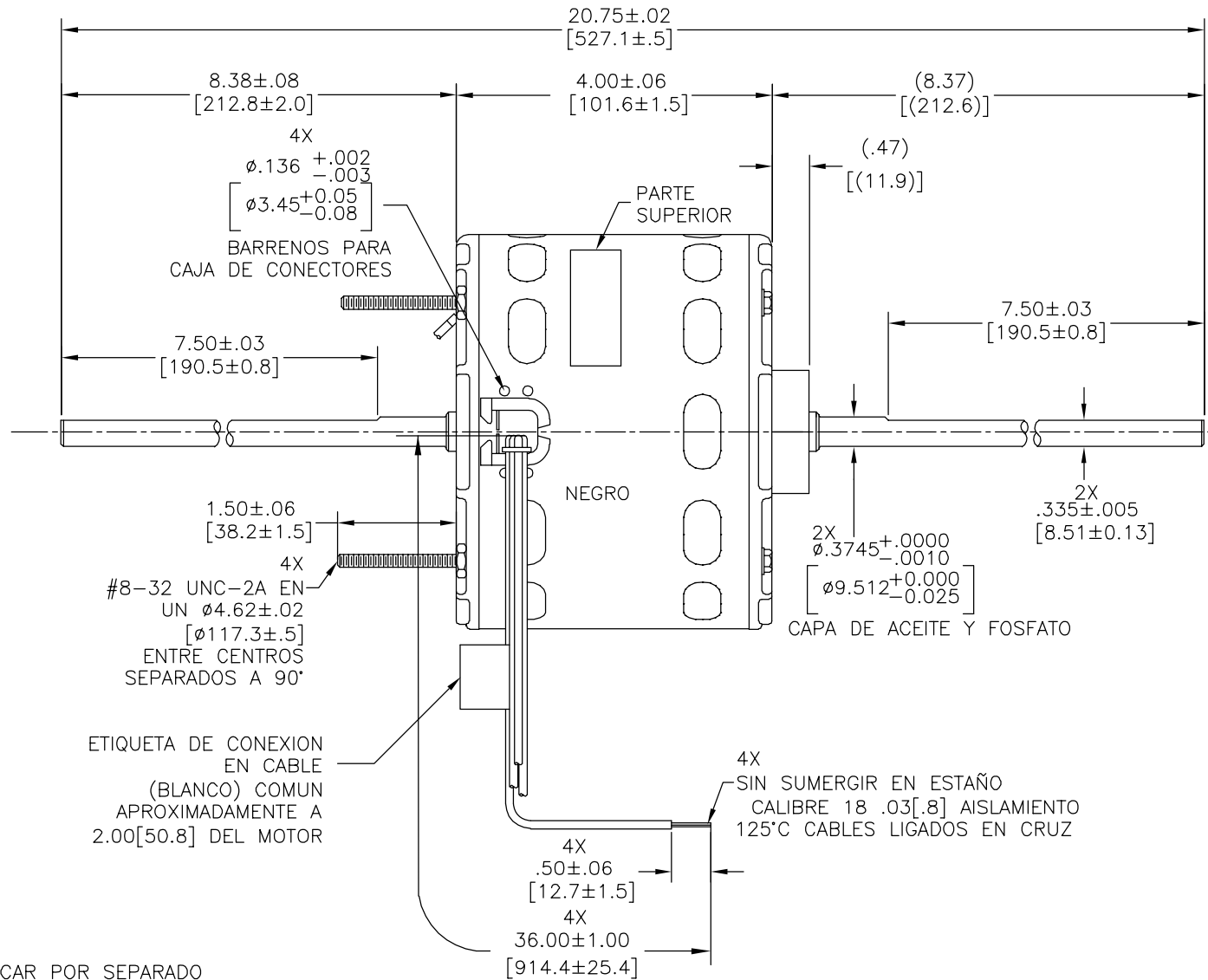
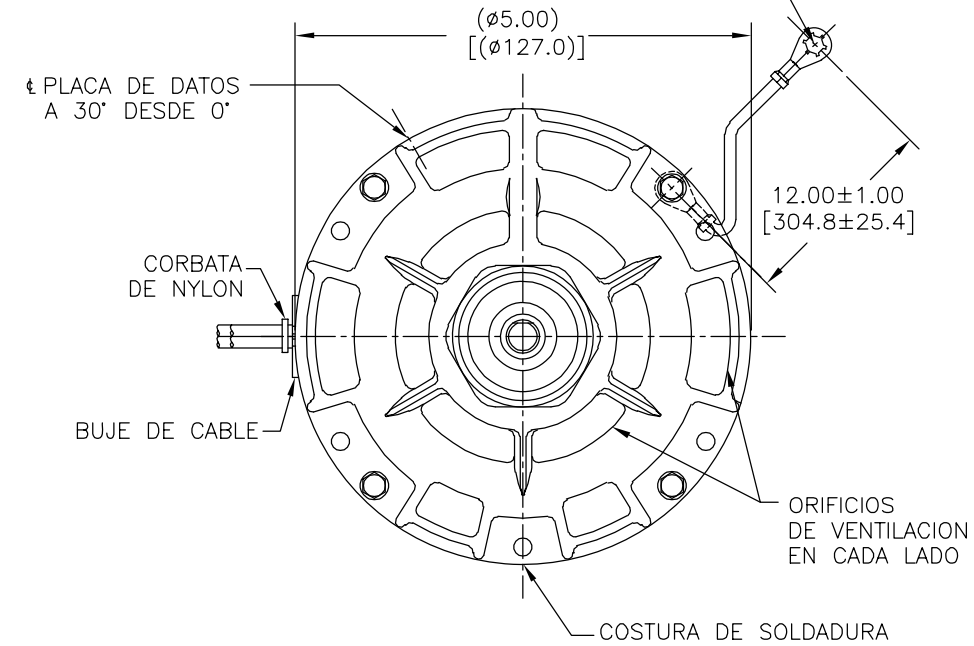
1

EL CLIENTE ES SOLO RESPONSABLE DEL RENDIMIENTO DEL MOTOR Y APLICACIONES CONVENIENTES PARA LOS USOS DEL CLIENTE

REVISION:	ECO	REVISADO POR:	FECHA:	APROBADO POR:	FECHA:
F	0029021	E.SINECIO	10-18-2012	G.ALVIDREZ	10-18-2012

JUEGO AXIAL .005 [.127] MINIMO - .040[1.02] MAXIMO
 OSCILACION MAXIMA DE FLECHA .001[.03] POR PULGADA
 LA OSCILACION MAXIMA NO DEBE EXCEDER .010[.25]

TORNILLO #10 EN CALIBRE DE 18 .03[.8] AISLAMIENTO
 60°C PVC VERDE/AMARILLO TIERRA EN LADO DE CABLES



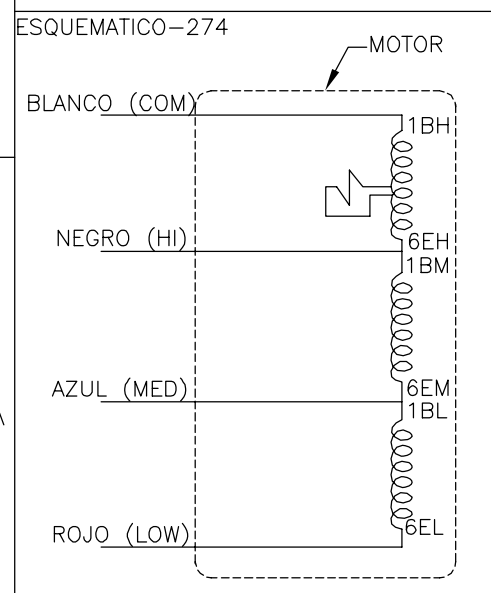
1.50±.06 [38.2±1.5]
 4X #8-32 UNC-2A EN UN Ø4.62±.02 [Ø117.3±.5] ENTRE CENTROS SEPARADOS A 90°

ETIQUETA DE CONEXION EN CABLE (BLANCO) COMUN APROXIMADAMENTE A 2.00[50.8] DEL MOTOR

4X SIN SUMERGIR EN ESTAÑO CALIBRE 18 .03[.8] AISLAMIENTO 125°C CABLES LIGADOS EN CRUZ

ETIQUETA DE CONEXION 63T7433-210
 VER NOTA 1

EMBARCAR POR SEPARADO 72T7176A-66 ENSAMBLE DE BOLSA



NUMERO DE PARTE DE DISTRIBUTION: 9671
 NUMERO DE PARTE GRAINGER: 4UU40

ELECTRICAMENTE POR MUESTRA 0442633C
 NUMERO DE DESEMPEÑO DE CURVA C32347

ROT: CCWLE

PLACA DE DATOS:

SER. DATE & PO# PLT LTR MOD DA2F098N' []
 VOLTS 115 HZ 60/50 AMPS 5.5
 RPM 1500 SP 3 PH 1 CAP ← ROTATION
 INS CL B AMB 40°C HP 1/8 CONT. A.O.
 BRG SLV ASSEMBLED IN MEXICO

CARACTERISTICAS DE GEOMETRIA Y SIMBOLOS ▽ PLANICIDAD - RECTITUD < ANGULARIDAD ⊥ PERPENDICULARIDAD (A ESCUADRA) // PARALELISMO ○ REDONDEZ (CIRCULARIDAD) ∅ CILINDRICIDAD △ PERFIL DE CUALQUIER SUPERFICIE ∇ PERFIL DE CUALQUIER LINEA ↗ VARIACION ⊕ POSICION REAL ⊙ CONCENTRICIDAD = SIMETRIA	A MENOS QUE SE ESPECIFIQUE DE OTRA MANERA, LAS TOLERANCIAS DE LAS DIMS; SON LAS SIGUIENTES: PULG ±.1 ±.02 ±.005 ±.0005 mm ±0.5 ±0.13 ±0.013 ANG. ±50 GRADOS ELIMINAR REBABAS Y ORILLAS FILOSAS DEL BORDE. PULG .003-.015 mm 0.1-0.4 FILETEAR ESQUINA: PULG .020 mm 0.5 MAQUINAR SUPERFICIES PULG 125 mm 3.2	DIBUJADO POR: J.RUPERT APROBADO POR:	09-08-2004	REGAL REGAL-BELOIT CORPORATION DESCRIPCION: MODEL-RFHP-42FR OUTLINE TAMAÑO: C NUMERO DE DIBUJO: DA2F7098 ESCALA: NONE HOJA: 1
		TERCER ANGULO DE PROYECCION	FECHA EDS: 11-11-2011 REV. FORMATO: H	

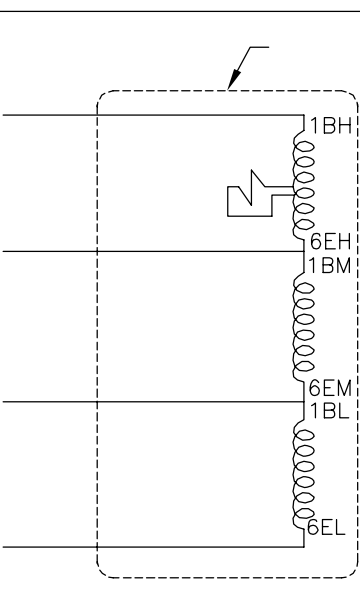
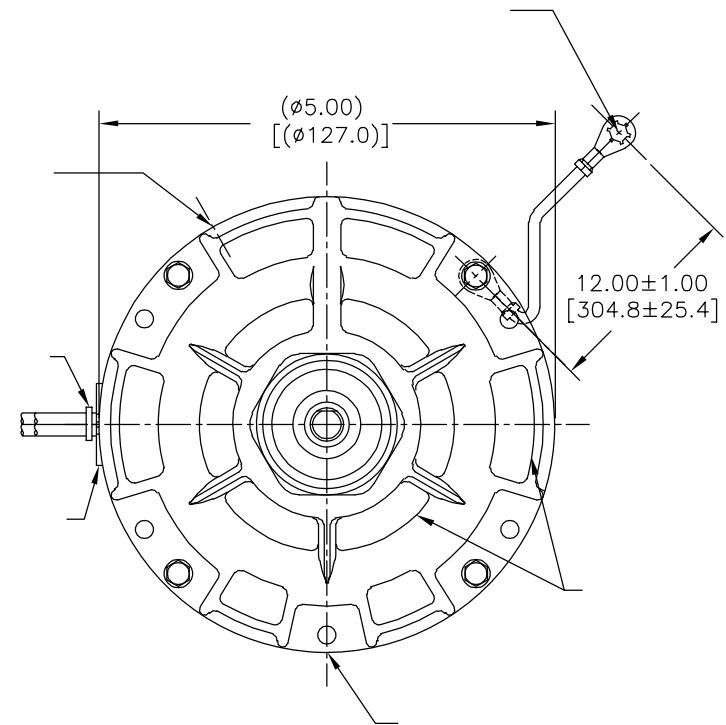
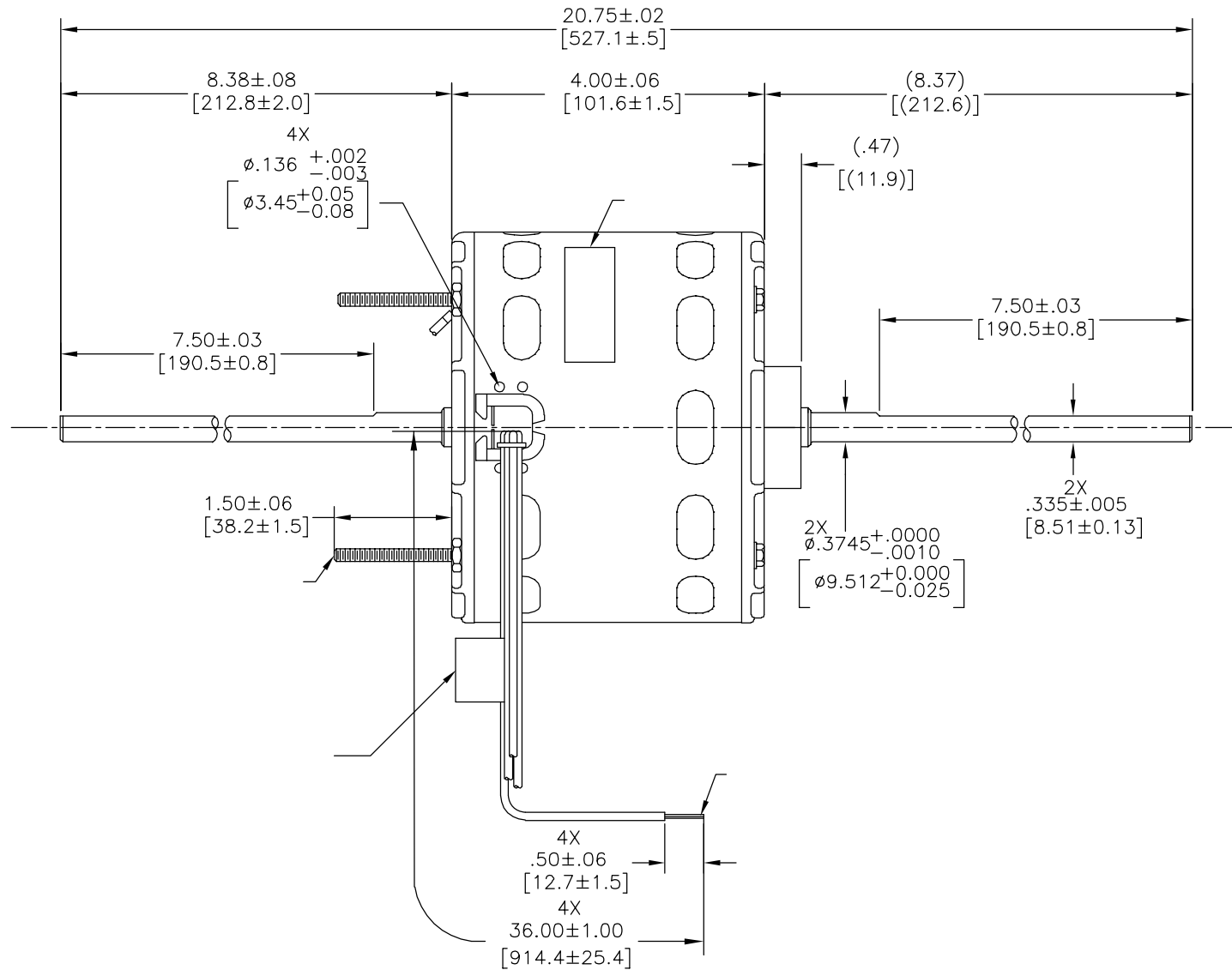
4

3

2

1

版本	ECO	编制	日期	批准	日期
F	0029021	E.SINECIO	10-18-2012	G.ALVIDREZ	10-18-2012



ROT: CCWLE

Tipp City, OH
THERMALLY PROTECTED

SER. DATE & PO# PLT LTR MOD DA2F098N' []
VOLTS 115 HZ 60/50 AMPS 5.5
RPM 1500 SP 3 PH 1 CAP ← ROTATION
INS CL B AMB 40°C HP 1/8 CONT. A.O.
BRG SLV ASSEMBLED IN MEXICO

形位公差 □ 平面度 — 直线度 ∠ 倾斜度 ⊥ 垂直度 ∥ 平行度 ○ 圆度 ⊘ 圆柱度 ⌒ 面轮廓度 △ 线轮廓度 ↻ 圆跳动 ⊕ 位置度 ◎ 同轴度 ≡ 对称度	除另有注明 尺寸公差如下: 英寸 X XX XXX XXXX ±.1 ±.02 ±.005 ±.0005 毫米 ±0.5 ±0.13 ±0.013 角度 ±.50 度 清理毛刺和尖棱 英寸 .003-.015 毫米 0.1-0.4 内圆角 英寸 .020 毫米 0.5 表面粗糙度 英制 125 米制 3.2
--	---

绘图: J.RUPERT	09-08-2004
批准:	
第三角投影	图纸格式发布日期 11-11-2011 图纸格式版本 H
机密: 本图纸及相关信息所有权归REGAL-BELOIT CORPORATION 未经REGAL-BELOIT CORPORATION书面授权, 不得泄露、 复制、传播或作其他用途。—版权所有	

REGAL REGAL-BELOIT CORPORATION	
名称	MODEL-RFHP-42FR OUTLINE
图幅	C 图号 DA2F7098
比例	NONE 页号 1

ASME Y14.5M 1994

米制尺寸显示在 []

4

3

2

1