

PRODUCT INFORMATION PACKET



Model No: 9675

Catalog No: 9675

Fan Coil & Air Conditioner Motor, 1/8-1/12-1/20-1/30 HP, 1 Ph, 60 Hz, 115 V, 1550 RPM, 4 Speed,
42 Frame, OPEN



Regal and Century are trademarks of Regal Rexnord Corporation or one of its affiliated companies.

©2023 Regal Rexnord Corporation, All Rights Reserved. MC017097E





Nameplate Specifications

Phase	1	Output HP	1/8-1/12-1/20-1/30 Hp
Output KW	0.10 kW	Voltage	115 V
Speed	1550 rpm	Service Factor	1
Frame	42Y	Enclosure	Open Enclosed
Thermal Protection	Automatic	Ambient Temperature	40 °C
Frequency	60 Hz	Current	3.3,2.3,1.7,1.2 A
Duty	Continuous Air Over	Insulation Class	B
UL	Recognized	CSA	Y
CE	N	Number of Speeds	4

Technical Specifications

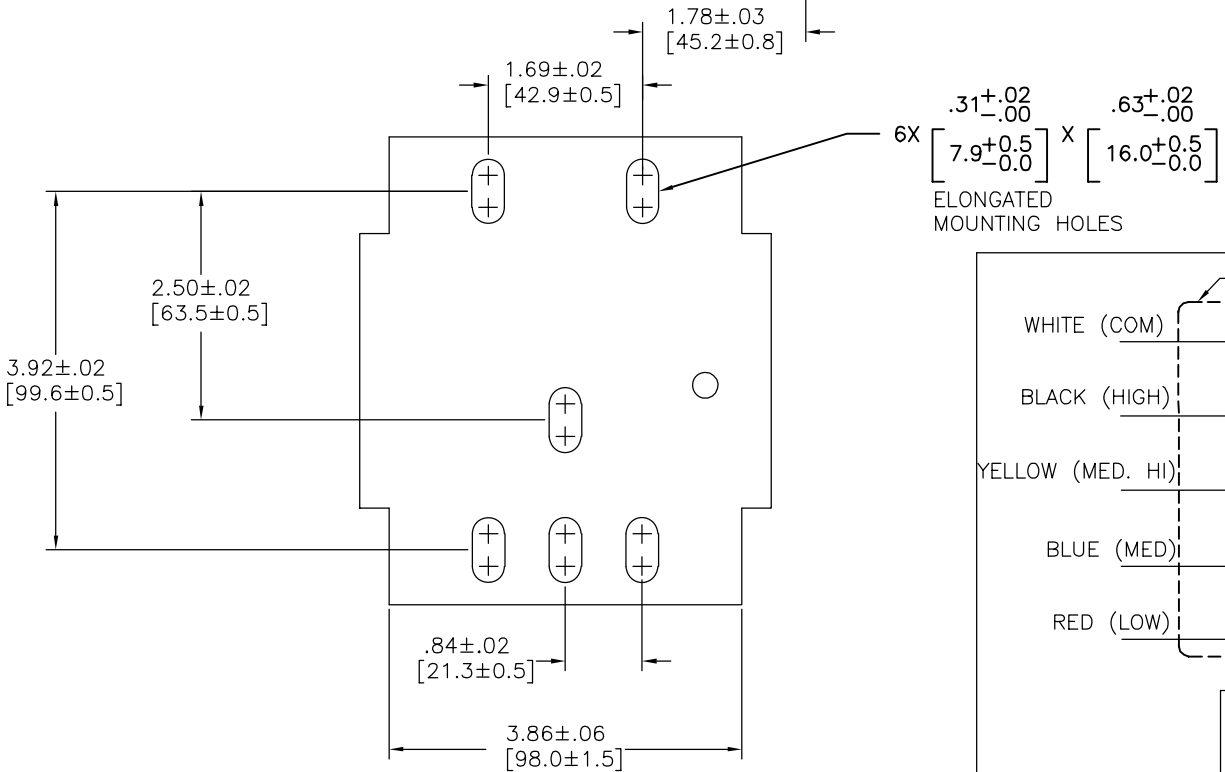
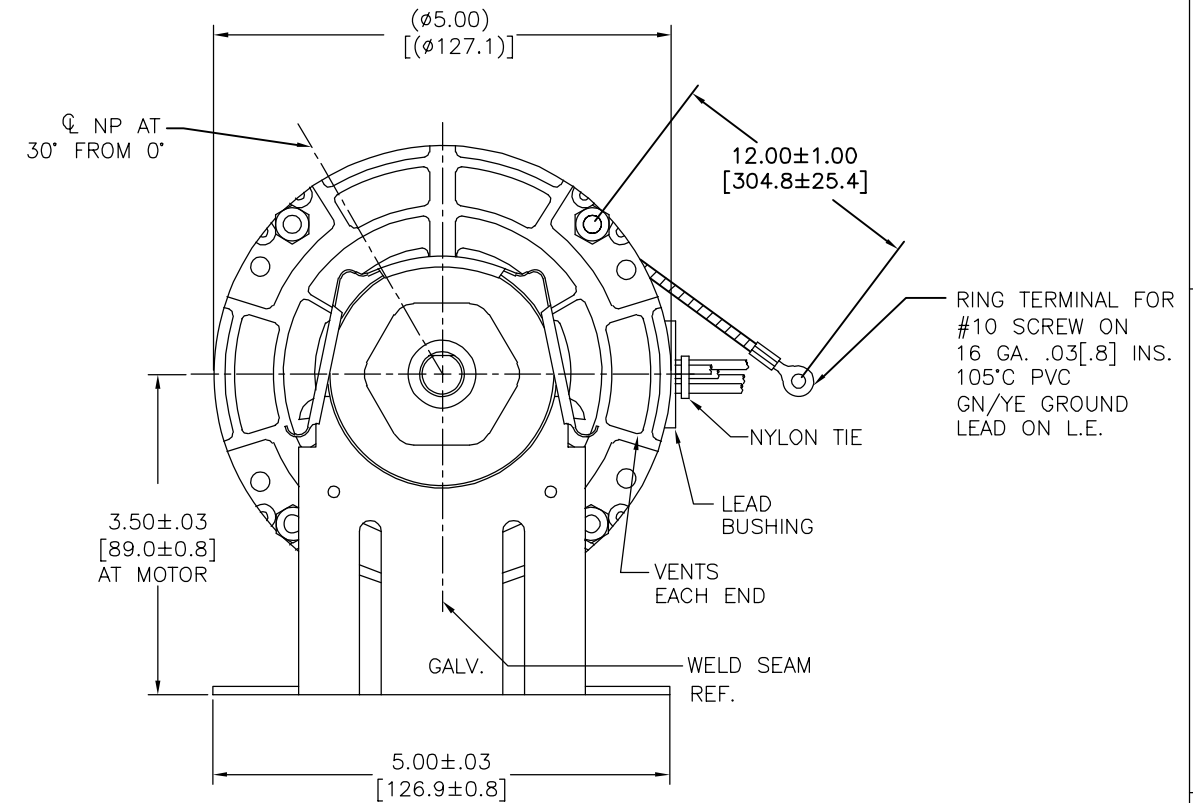
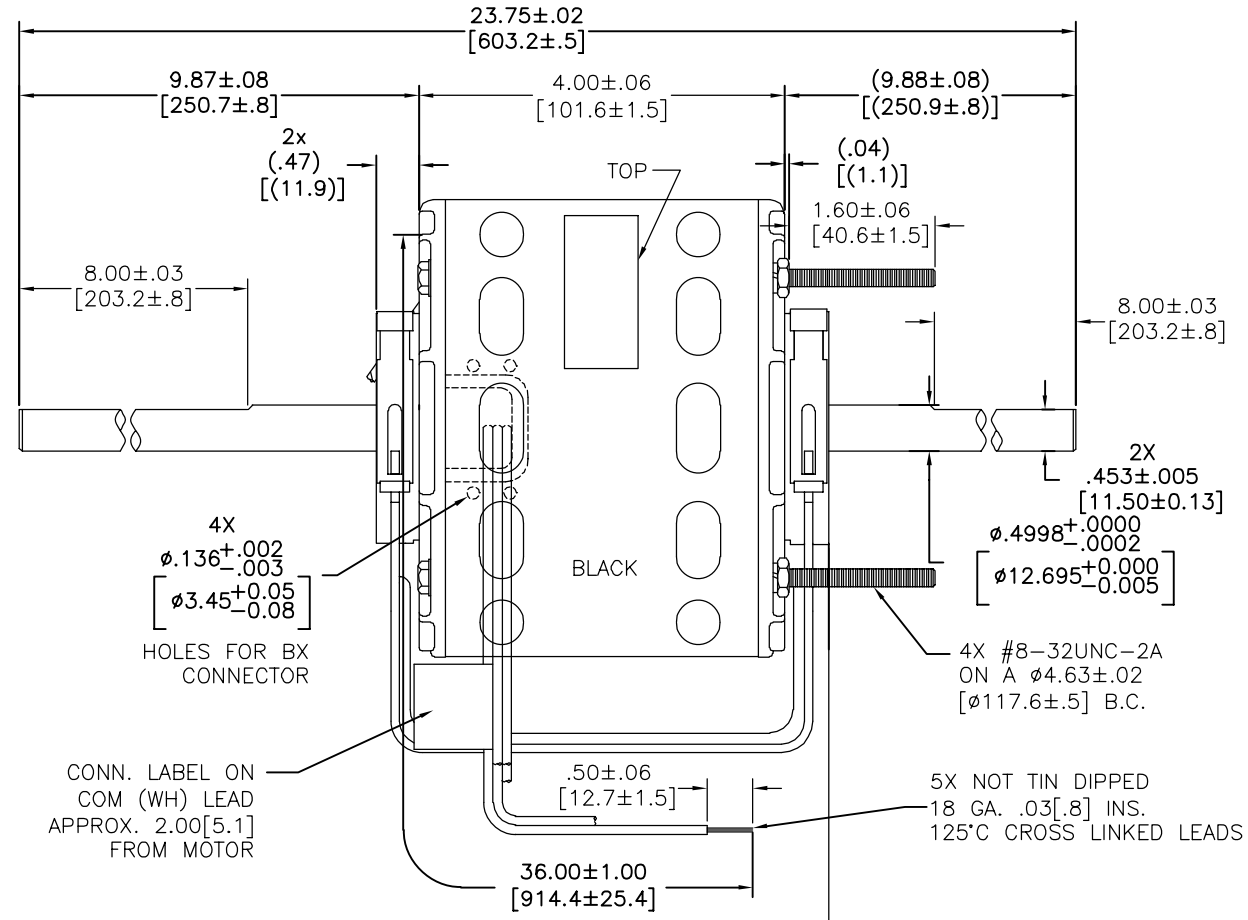
Electrical Type	Shaded Pole	Starting Method	Across The Line
Poles	4	Rotation	Counterclockwise Lead End
Mounting	Resilient Base	Motor Orientation	Horizontal
Drive End Bearing	Sleeve	Opp Drive End Bearing	Sleeve
Frame Material	Rolled Steel	Shaft Type	Flat
Overall Length	23.75 in	Frame Length	3.42 in
Shaft Diameter	0.500 in	Shaft Extension	9.8X.5X9.8 in
Outline Drawing	DA2F7101-S01		

This is an uncontrolled document once printed or downloaded and is subject to change without notice. Date Created:08/24/2023

REV	ECO	REV BY	DATE	APPD	DATE
N	0029020	J.AGUILERA	07-11-12	D.BALDERRAMA	07-11-12

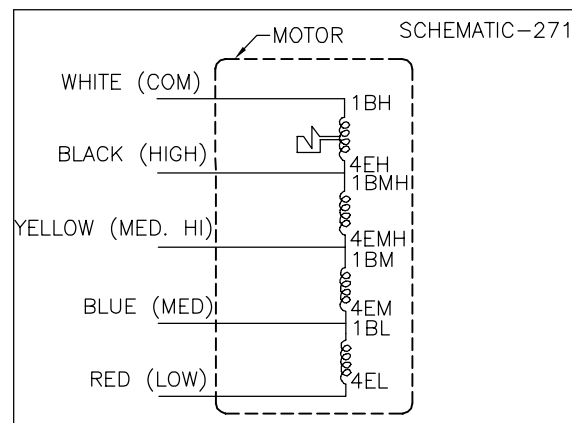
CUSTOMER IS SOLELY RESPONSIBLE FOR MOTOR PERFORMANCE AND SUITABILITY IN APPLICATIONS FOR CUSTOMER'S USES.

END PLAY .005[.13] MIN - .040[1.02] MAX
 MAX. SHAFT RUN OUT .001[.02] PER INCH
 MAX. RUN OUT NOT TO EXCEED .0075[.19]



NOTE
 1. DISTRIBUTION PART NUMBER: 9675
 GRAINGER PART NUMBER: 4UU49

ELECTRICALLY PER
 SAMPLE S-2784D
 PERFORMANCE CURVE# C32451



ROT.: - CCWLE
 NAMEPLATE DATA:
 Tipp City, OH
 THERMALLY PROTECTED
 SER. DATE & PO# PLT LTR MOD DA2F7101N# []
 VOLTS 115 HZ 60 AMPS 3.3
 RPM1550 SP4 PH1 CAP
 INS CL AMB °C HP CONT A.O. ← ROTATION →
 BRG SLV BK HI 3.3A 1/8HP
 YE MED HI 2.3A 1/12HP
 BU MED 1.7A 1/20HP
 RD LOW 1.2A 1/30HP
 WH COM
 ASSEMBLED IN MEXICO

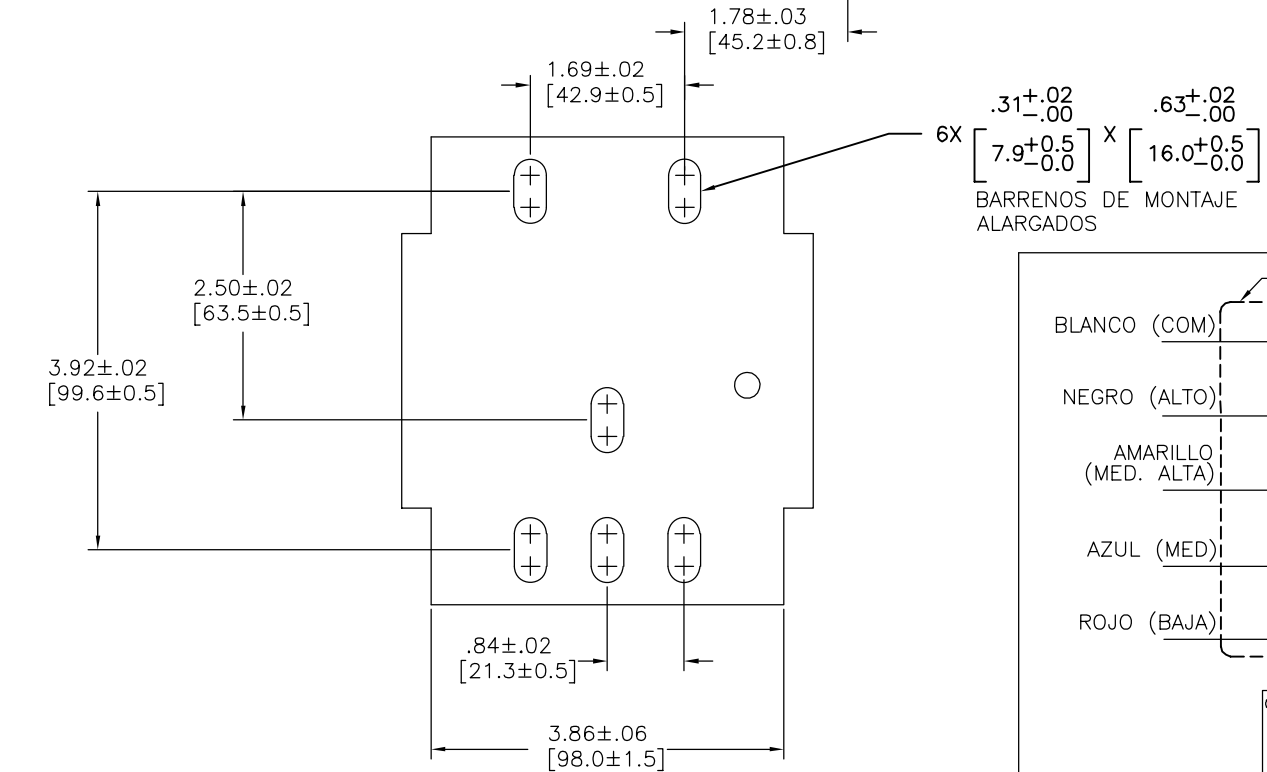
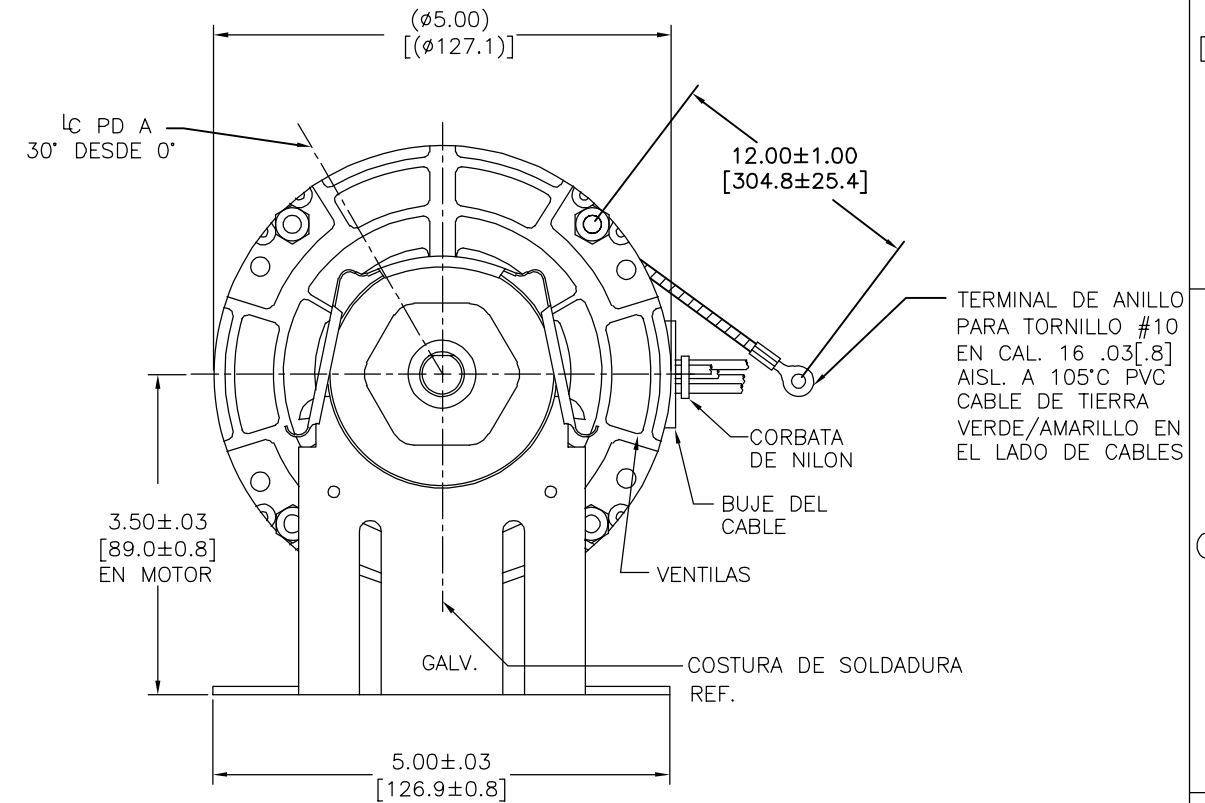
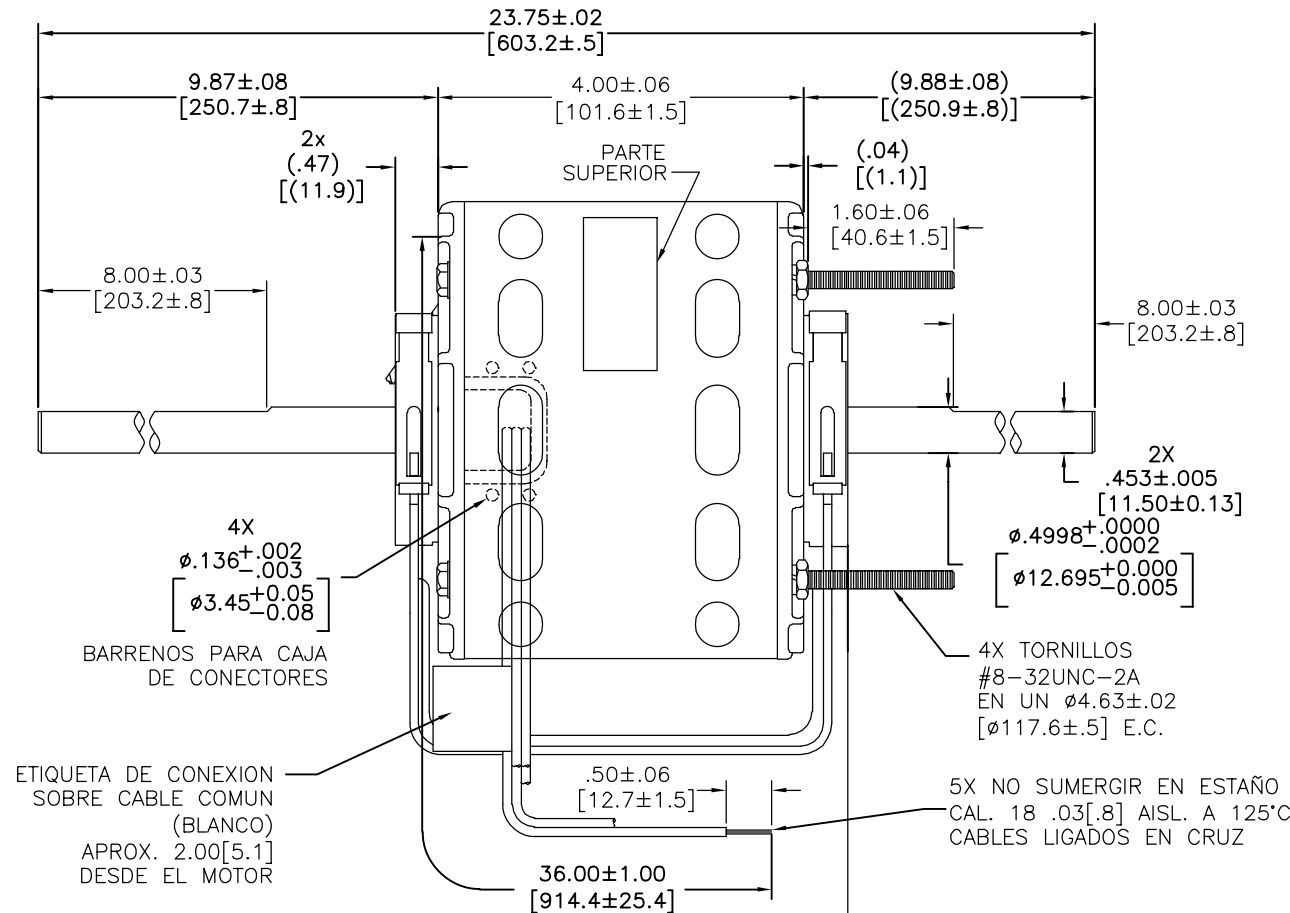
CONN. LABEL
 63T7433-256

GEOMETRIC CHARACTERISTICS & SYMBOLS □ FLATNESS — STRAIGHTNESS ∠ ANGULARITY ⊥ PERPENDICULARITY (SQUARENESS) // PARALLELISM ○ ROUNDNESS (CIRCULARITY) ⌀ CYLINDRICITY ≻ PROFILE OF ANY SURFACE ∩ PROFILE OF ANY LINE ↗ RUNOUT ⊕ TRUE POSITION ⊙ CONCENTRICITY = SYMMETRY ASME Y14.5M 1994	UNLESS OTHERWISE SPECIFIED DIM. TOLERANCES ARE AS FOLLOWS: INCH ± .1 ±.02 ±.005 ±.0005 mm ±0.5 ±0.13 ±0.013 ANG. ±.50 DEG REMOVE BURRS & BREAK SHARP EDGES: INCH .003-.015 mm 0.1-0.4 CORNER FILLETS TO: INCH .020 mm 0.5 MACHINE SURFACES: INCH 125 mm 3.2 METRIC DIMS. SHOWN IN [BRACKETS]	DR BY: JBLANK	12-08-2005	REGAL-BELOIT CORPORATION DESCRIPTION MODEL-RFHP-42FR OUTLINE SIZE D DWG NO DA2F7101 SCALE NONE SHEET 1
		APPD:	EDS DATE 11-11-2011 FORMAT REV H	

EL CLIENTE ES SOLO RESPONSABLE DEL RENDIMIENTO DEL MOTOR Y APLICACIONES
CONVENIENTES PARA LOS USOS DEL CLIENTE.

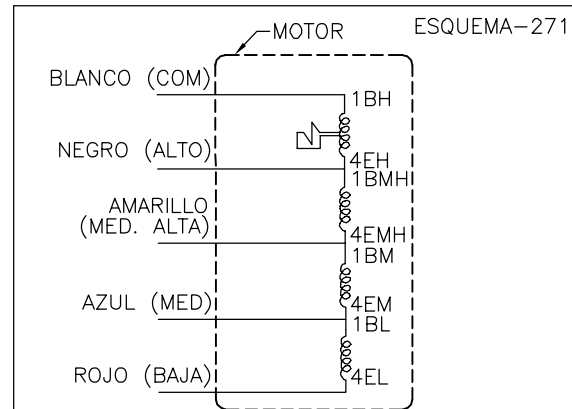
REVISION: ECO	REVISADO POR: J.AGUILERA	FECHA: 07-11-12	APROBADO POR: D.BALDERRAMA	FECHA: 07-11-12
N	0029020			

JUEGO AXIAL .005[.13] MIN - .040[1.02] MAX
MAX. OSCILAMIENTO DE FLECHA .001[.02] POR PULGADA
MAX. OSCILAMIENTO NO EXCEDERA DE .0075[.19]



NOTA
1. NO. DE PARTE DE DISTRIBUCION: 9675
NO. DE PARTE GRAINGER: 4UU49

ELECTRICAMENTE DE ACUERDO A MUESTRA S-2784D
CURVA DE FUNCIONAMIENTO # C32451



ROT.: - CCWLE

Century Tipp City, OH
THERMALLY PROTECTED

SER. DATE & PO# PLT LTR MOD DA2F7101N# []

VOLTS 115 HZ 60 AMPS 3.3
RPM1550 SP4 PH1 CAP
INS CL AMB °C HP CONT A.O. ←ROTATION→
BRG SLV BK HI 3.3A 1/8HP
YE MED HI 2.3A 1/12HP
BU MED 1.7A 1/20HP
RD LOW 1.2A 1/30HP
WH COM

ASSEMBLED IN MEXICO

ETIQUETA DE CONEXION
63T7433-256

CARACTERISTICAS DE GEOMETRIA Y SIMBOLOS: □ PLANICIDAD — RECTITUD ∠ ANGULARIDAD ⊥ PERPENDICULARIDAD (A ESCUADRA) // PARALELISMO ○ REDONDEZ (CIRCULARIDAD) H CILINDRICIDAD ≡ PERFIL DE CUALQUIER SUPERFICIE ∩ PERFIL DE CUALQUIER LINEA ∠ VARIACION ⊕ POSICION REAL ⊙ CONCENTRICIDAD = SIMETRIA	A MENOS QUE SE ESPECIFIQUE DE OTRA MANERA, LAS TOLERANCIAS DE LAS DIMS, SON LAS SIGUIENTES: PULG ±.1 ±.02 ±.005 ±.0005 mm ±0.5 ±0.13 ±0.013 ANG. ±50 GRADOS ELIMINAR REBABAS Y ORILLAS FILOSAS DEL BORDE. PULG .003-.015 mm 0.1-0.4 FILETEAR ESQUINA: PULG .020 mm 0.5 MAQUINAR SUPERFICIES PULG 125 mm 3.2 DIMS METRICAS MOSTRADAS [PARENTESIS]	DIBUJADO POR: JBLANK	12-08-2005	DESCRIPCION: REGAL REGAL-BELOIT CORPORATION MODEL-RFHP-42FR OUTLINE
		APROBADO POR:	FECHA EDS: 11-11-2011 REV. FORMATO: H	
CONFIDENCIAL: ESTE DIBUJO Y SU INFORMACION SON PROPIEDAD DE USO EXCLUSIVO Y CONFIDENCIAL DE REGAL-BELOIT CORPORATION, Y NO DEBERAN SER REVELADOS, DUPLICADOS, DISTRIBUIDOS O USARSE DE OTRA MANERA SIN EL CONSENTIMIENTO ESCRITO DE REGAL-BELOIT CORPORATION. -TODOS LOS DERECHOS RESERVADOS.		ESCALA: NONE	HOJA: 1	