

PRODUCT INFORMATION PACKET



Model No: 9676
Catalog No: 9676

Fan Coil & Air Conditioner Motor, 1/8 HP, 1 Ph, 60 Hz, 115 V, 1050 RPM, 1 Speed, 42 Frame, OAO



Regal and Century are trademarks of Regal Rexnord Corporation or one of its affiliated companies.
©2022 Regal Rexnord Corporation, All Rights Reserved. MC017097E





Nameplate Specifications

Output HP	1/8 Hp	Output KW	0.10 kW
Frequency	60 Hz	Voltage	115 V
Current	4.4 A	Speed	1050 rpm
Service Factor	1	Phase	1
Duty	Air Over	Insulation Class	B
Frame	42Y	Enclosure	Open Air Over
Thermal Protection	Automatic	Ambient Temperature	40 °C
UL	Recognized	CSA	Y
CE	N	Number of Speeds	1

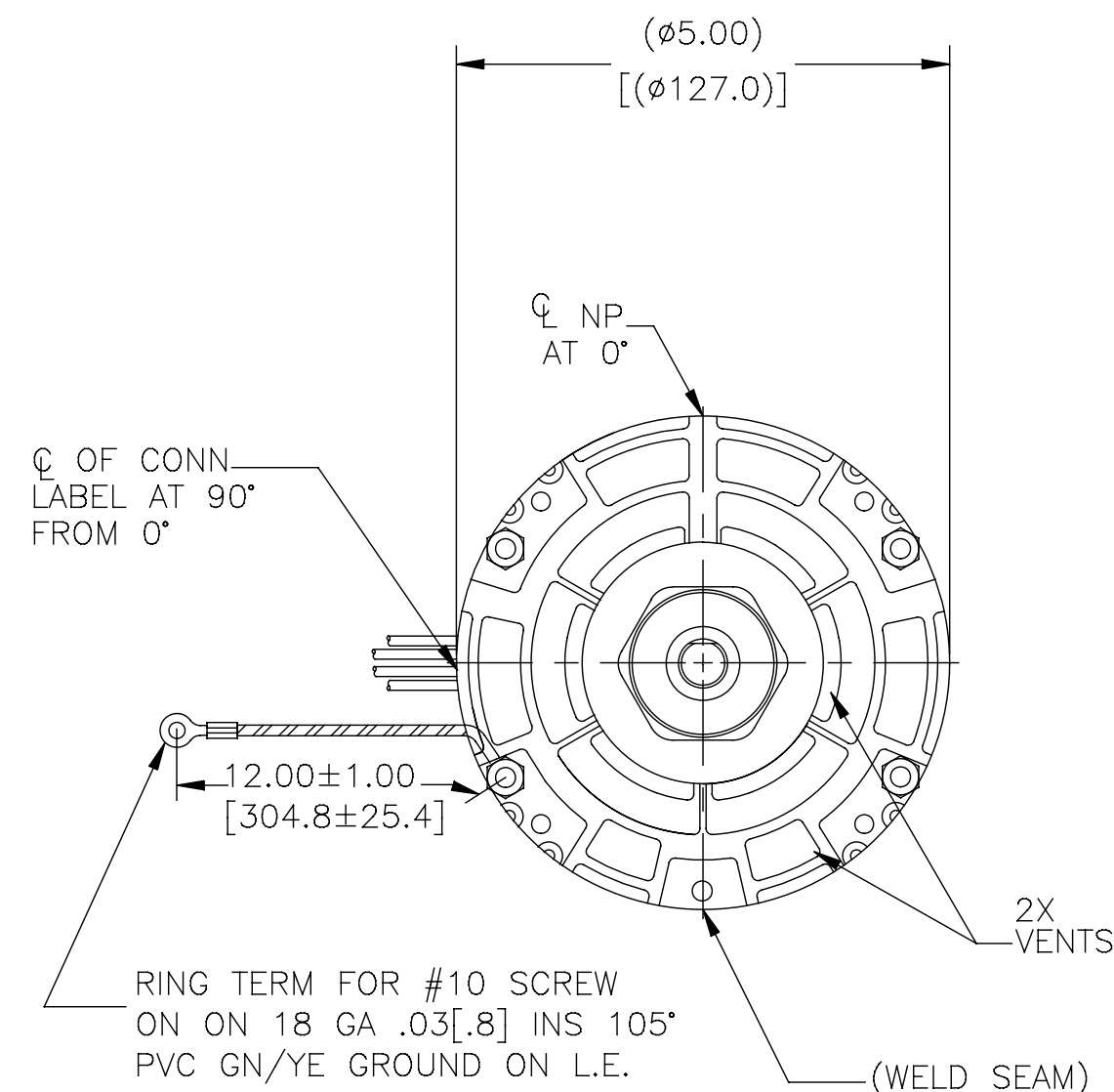
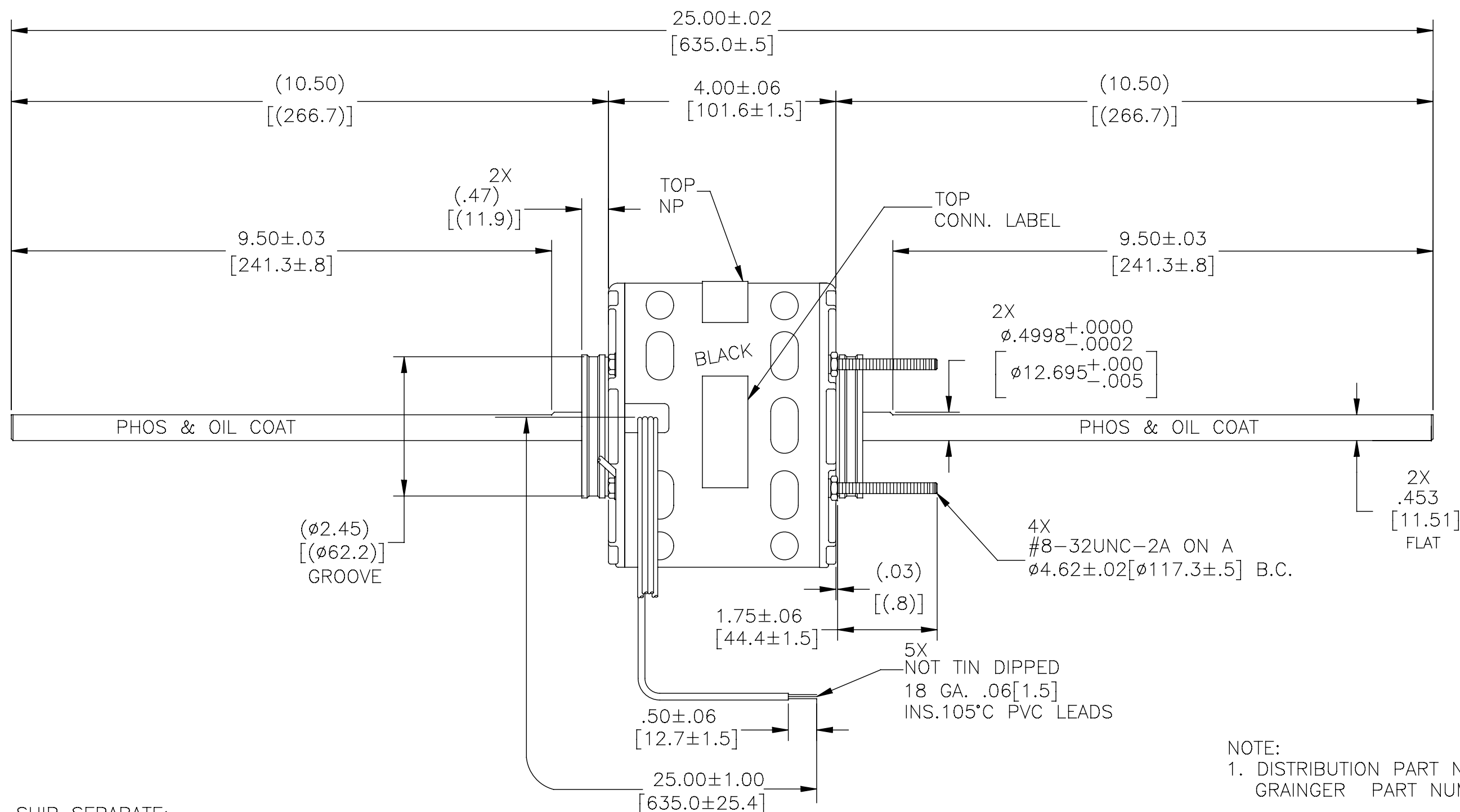
Technical Specifications

Electrical Type	Shaded Pole	Starting Method	Across The Line
Poles	6	Rotation	Counterclockwise Lead End
Mounting	Resilient Rings	Motor Orientation	Horizontal
Drive End Bearing	Sleeve	Opp Drive End Bearing	Sleeve
Frame Material	Rolled Steel	Shaft Type	Flat
Overall Length	25.00 in	Frame Length	3.42 in
Shaft Diameter	0.500 in	Shaft Extension	10.5X.5X10.5 in
Outline Drawing	DA3G7207-S01		

This is an uncontrolled document once printed or downloaded and is subject to change without notice. Date Created:11/29/2022

CUSTOMER IS SOLELY RESPONSIBLE FOR MOTOR PERFORMANCE AND SUITABILITY IN APPLICATIONS FOR CUSTOMER'S USES.

END PLAY: .005[.13] MIN. -.040[1.02] MAX.
 MAX. SHAFT RUNOUT .001[.03] PER INCH
 MAX. SHAFT RUNOUT NOT TO EXCEED .010[.25]



NOTE:
 1. DISTRIBUTION PART NUMBER: 9676
 GRAINGER PART NUMBER: 4UU50

SHIP SEPARATE:
 1X 72T7176A-65 BAG ASSEMBLY
 1X 152T135-2 RESIL BASE

ELECTRICALLY PER SAMPLE
 0442634B CURVE #32282

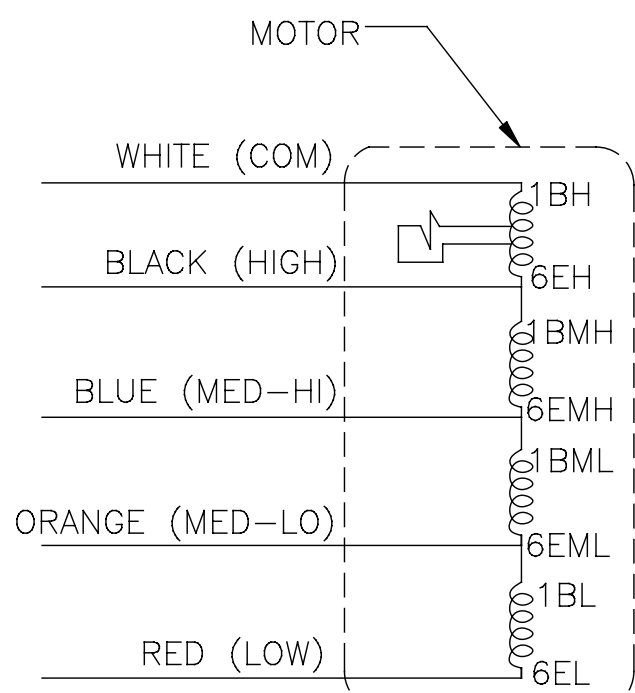
CCWLE-CWSE

NAMEPLATE DATA:

Century Tipp City, OH
THERMALLY PROTECTED
 SER. DATE & P0# PLT LTR MOD DA3G207N"
 VOLTS 115 HZ 60 AMPS 4.4
 RPM 1050 SP PH 1 CAP
 INS CL B AMB 40 °C HP 1/8 AO
 BRG SLV
 ASSEMBLED IN MEXICO

SEE NOTE 1

CONN. LABEL
 10004653-002-001



SCHEMATIC-281

DRAWING REVISION H	REVISION BY C.ZHOU	DATE 10-27-2015	TOLERANCES UNLESS OTHERWISE SPECIFIED DEC. INCH mm ANGLE .XX ±0.02 [±2.5] ±0.5° .XXX ±0.005 [±0.127] .XXXX ±0.0005 [±0.0127]	DRAWN BY: KGPROD	REGAL ™ Regal Beloit America, Inc.
ECO ECO-0087749	APPROVED BY C.ZHANG	DATE 10-27-2015	REMOVE BURRS & BREAK SHARP EDGES .003/.015 [0.076/.381] CORNER FILLETS .02 [0.51] MACHINED SURFACES 125/INCH 3.2/mm	DATE: 08-10-2004	
ECO DESCRIPTION @ZONE A1 CHANGE CONN LB TO 10004653-002-001				APPROVED BY:	DESCRIPTION MODEL-RFHP-42FR OUTLINE
COPYRIGHT REGAL BELOIT AMERICA, INC. ALL RIGHTS RESERVED. PROPRIETARY AND CONFIDENTIAL INFORMATION - THIS DOCUMENT IS THE PROPERTY OF REGAL BELOIT AMERICA, INC. (OWNERS) AND CONTAINS OWNERS PROPRIETARY INFORMATION. ANY PERSON, CORPORATION OR OTHER FIRM RECEIVING IT IS DEEMED, BY RECEIVING IT, TO AGREE THAT IT, AND/OR ANY PART OF IT, SHALL NOT BE DISCLOSED TO ANY PERSON, CORPORATION OR OTHER ENTITY, DUPLICATED, AND/OR USED, EXCEPT AS EXPRESSLY APPROVED IN WRITING IN ADVANCE BY OWNER. THIS DOCUMENT SHALL BE RETURNED TO OWNER UPON REQUEST. IT MAY BE SUBJECT TO CERTAIN RESTRICTIONS UNDER APPLICABLE EXPORT CONTROL LAWS AND REGULATIONS.				DATE:	MATERIAL
				REFERENCE	PROCESS/FINISH
				THIRD ANGLE PROJECTION	SIZE DWG NO C DA3G7207
					SHEET 1