

# PRODUCT INFORMATION PACKET



Model No: 9694  
Catalog No: 9694

Ventilation Motor, 1/15 HP, 1 Ph, 60 Hz, 115 V, 1000 RPM, 1 Speed, 42 Frame, OAO



Regal and Century are trademarks of Regal Rexnord Corporation or one of its affiliated companies.  
©2025 Regal Rexnord Corporation, All Rights Reserved. MC017097E





**Nameplate Specifications**

Phase	1	Output HP	1/15 Hp
Output KW	0.05 kW	Voltage	115 V
Speed	1000 rpm	Service Factor	1.0
Frame	42Y	Enclosure	Open Air Over
Thermal Protection	Automatic	Ambient Temperature	40 °C
Frequency	60 Hz	Current	3.2 A
Duty	Air Over	Insulation Class	A
UL	Recognized	CSA	Y
CE	N	Number of Speeds	1

**Technical Specifications**

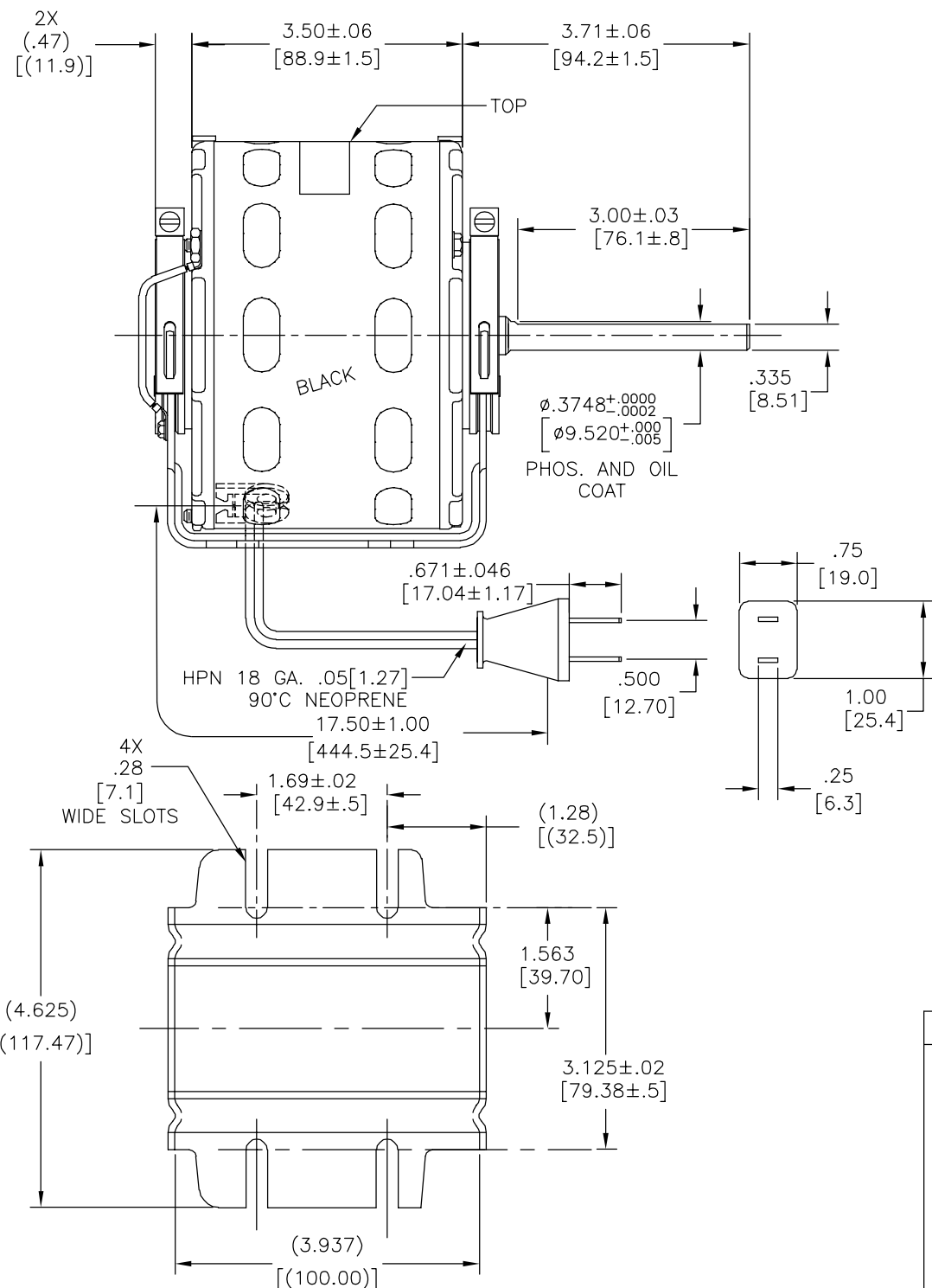
Electrical Type	Shaded Pole	Starting Method	Across The Line
Poles	6	Rotation	Counterclockwise Lead End
Mounting	Resilient Base	Motor Orientation	Horizontal
Drive End Bearing	Sleeve	Opp Drive End Bearing	Sleeve
Frame Material	Rolled Steel	Shaft Type	Flat
Overall Length	7.68 in	Frame Length	2.92 in
Shaft Diameter	0.375 in	Shaft Extension	3.7 in
Outline Drawing	DA3C7010-S01		

This is an uncontrolled document once printed or downloaded and is subject to change without notice. Date Created:02/10/2025

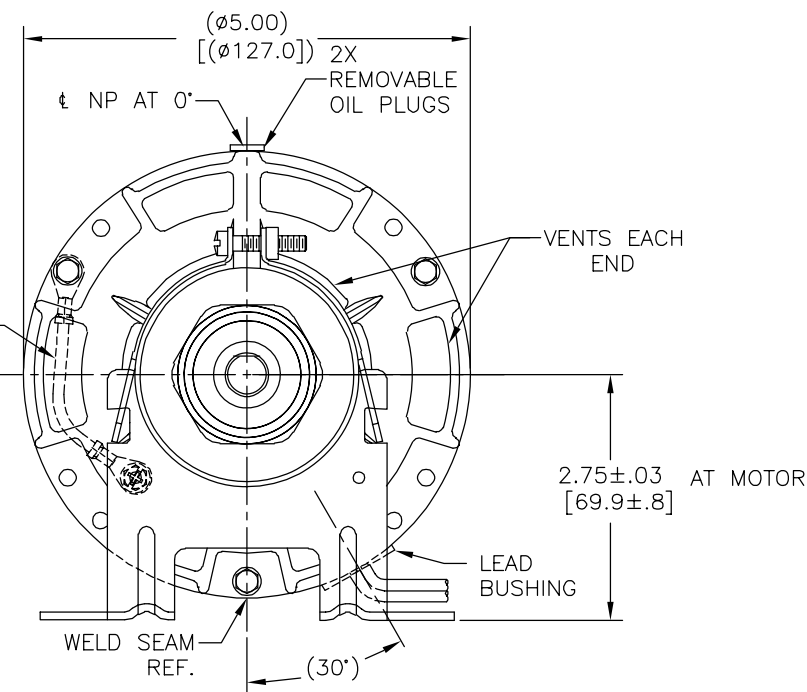
CUSTOMER IS SOLELY RESPONSIBLE FOR MOTOR PERFORMANCE AND SUITABILITY IN APPLICATIONS FOR CUSTOMER'S USES.

REV	ECO	REV BY	DATE	APPD	DATE
F	0029014	M.JOSEFOVSKY	10-17-2012	D.SCHUBERT	10-17-2012

ENDPLAY .005 [.13] MIN. - .040 [1.02] MAX.  
 MAX. SHAFT RUN OUT .001 [.03] PER INCH  
 MAX. RUN OUT NOT TO EXCEED .010 [.25]

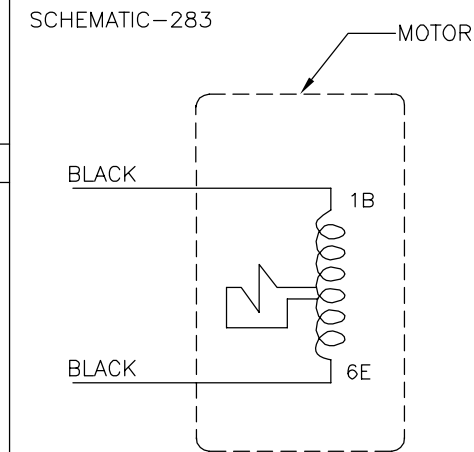


#10 SCREW ON 18 GA. .03 [.8] 60°C PVC GN/YE GROUND 4.00[101.6] LONG ON LEAD END.



ELECTRICALLY PER SAMPLE S-2357E PERFORMANCE CURVE NO. C32454

- NOTE:
- DISTRIBUTION PART NUMBER: 9694. GRAINGER PART NUMBER: 4UU96.



ROT.: - CCWLE

NAMEPLATE DATA:

**Century** Tipp City, OH THERMALLY PROTECTED

SER. DATE & PO# PLT LTR MOD DA3C010N# [ ]

VOLTS 115 HZ 60 AMPS 3.2

RPM 1000 SP 1 PH 1 CAP

INS CL A AMB40°C HP 1/15 CONT. A.O. ← ROTATION → ASSEMBLED IN MEXICO

BRG SLV

SEE NOTE 1

GEOMETRIC CHARACTERISTICS & SYMBOLS

- FLATNESS
- STRAIGHTNESS
- ANGULARITY
- PERPENDICULARITY (SQUARENESS)
- PARALLELISM
- ROUNDNESS (CIRCULARITY)
- CYLINDRICITY
- PROFILE OF ANY SURFACE
- PROFILE OF ANY LINE
- RUNOUT
- TRUE POSITION
- CONCENTRICITY
- SYMMETRY

ASME Y14.5M 1994

UNLESS OTHERWISE SPECIFIED DIM. TOLERANCES ARE AS FOLLOWS:

INCH	±.1	±.02	±.005	±.0005
mm	±0.5	±0.13	±0.013	

ANG. ±.50 DEG

REMOVE BURRS & BREAK SHARP EDGES:

INCH	.003-.015	mm	0.1-0.4
------	-----------	----	---------

CORNER FILLETS TO:

INCH	.020	mm	0.5
------	------	----	-----

MACHINE SURFACES:

INCH	125	mm	3.2
------	-----	----	-----

METRIC DIMS. SHOWN IN [BRACKETS]

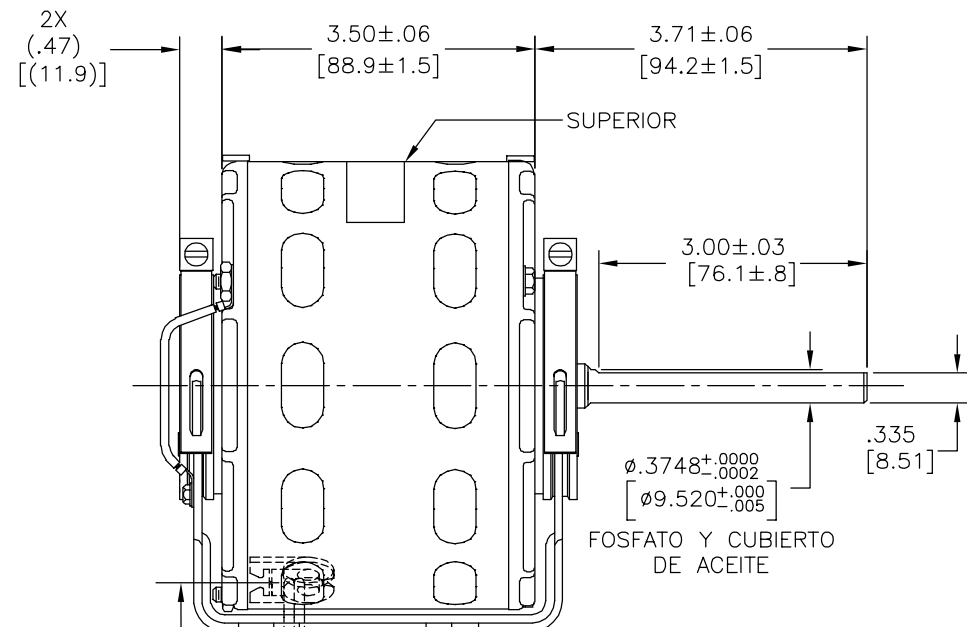
DR BY:	JRUPER	12-10-2004
APPD:	JRUPER	10-10-2004
THIRD ANGLE PROJECTION		EDS DATE 02-22-2008 FORMAT REV H
CONFIDENTIAL: THIS DRAWING AND ITS INFORMATION ARE THE EXCLUSIVE AND CONFIDENTIAL PROPERTY OF REGAL-BELOIT CORPORATION AND ARE NOT TO BE DISCLOSED, DUPLICATED, DISTRIBUTED OR OTHERWISE USED WITHOUT THE WRITTEN CONSENT OF REGAL-BELOIT CORPORATION. -ALL RIGHTS RESERVED.		

<b>REGAL</b> REGAL-BELOIT CORPORATION	
DESCRIPTION	OUTLINE
SIZE C	DWG NO DA3C7010
SCALE NONE	SHEET 1

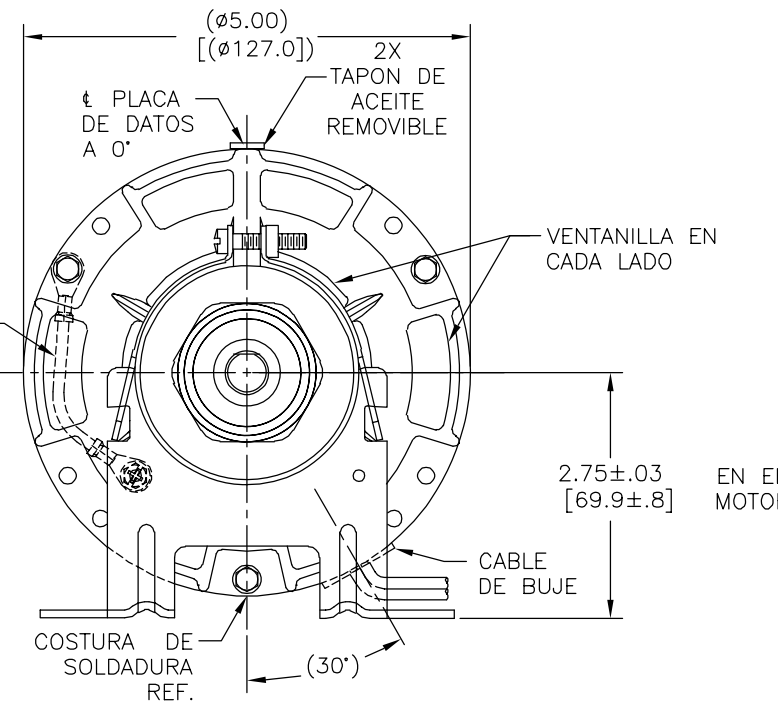
SOLO EL CLIENTE ES RESPONSABLE POR EL DESEMPEÑO DEL MOTOR Y LAS CONVENIENTES APLICACIONES PARA EL USO DEL CLIENTE.

REVISION:	ECO	REVISADO POR:	FECHA:	APROBADO POR:	FECHA:
F	0029014	M.JOSEFOVSKY	10-17-2012	D.SCHUBERT	10-17-2012

JUEGO AXIAL .005 [.13] MIN .040 [1.02] MAX  
 MAX. OSILACION DE FLECHA .001 [.02] SEGUN LAS PLGS  
 MAX. LA OSILACION NO EXCEDER DE .0075 [.19]



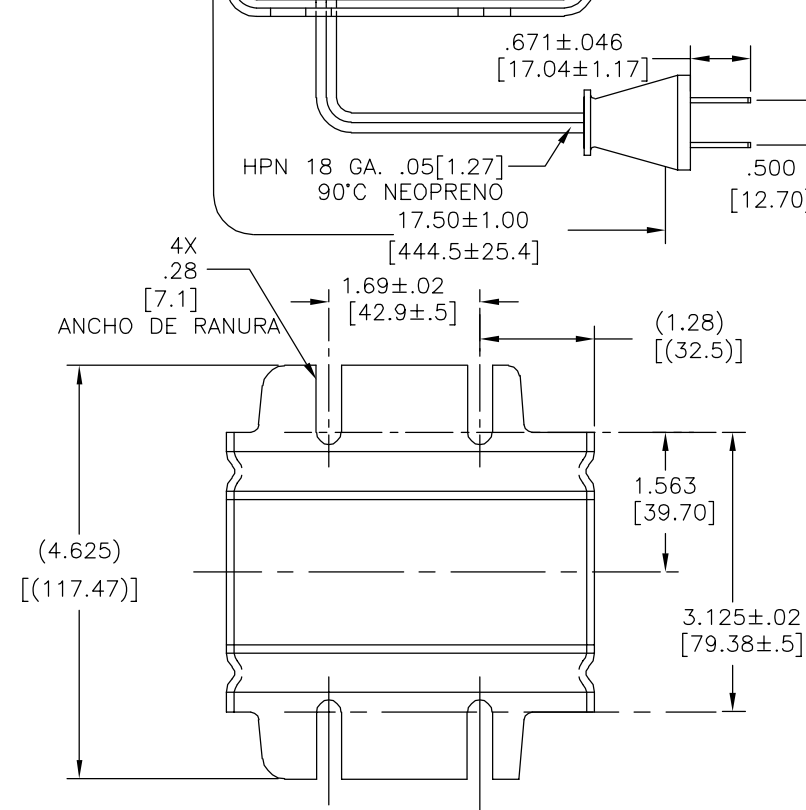
#10 TORNILLO DE 18 GA. .03 [.8]  
 60°C PVC VE/AM TIERRA  
 4.00 [101.6] LONGITUD AL LADO CABLES.



ELECTRICAMENTE DE ACUERDO A MUESTRA S-2357E DESEMPEÑO DE CURVA NO. C32454

NOTA:

- DISTRIBUCION DE NUMERO PARTE: 9694.  
 NUMERO PARTE GRAINGER: 4UU96.



ROT.:— CCWLE

ETIQUETA DE DATOS:

**Century** Tipp City, OH THERMALLY PROTECTED

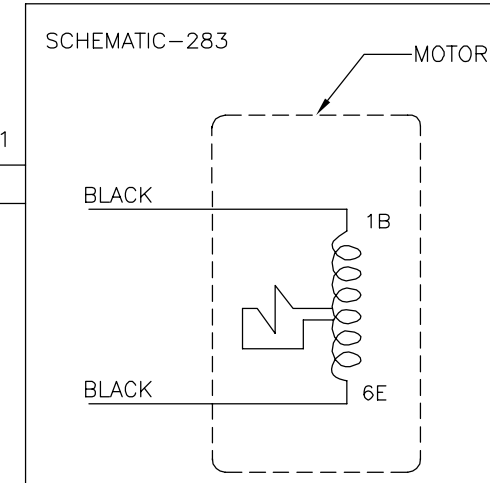
SER. DATE & P0# PLT LTR MOD DA3C010N# [ ]

VOLTS 115 HZ 60 AMPS 3.2

RPM 1000 SP 1 PH 1 CAP

INS CL A AMB40°C HP 1/15 CONT. A.O. ← ROTATION → ASSEMBLED IN MEXICO

VER NOTA 1



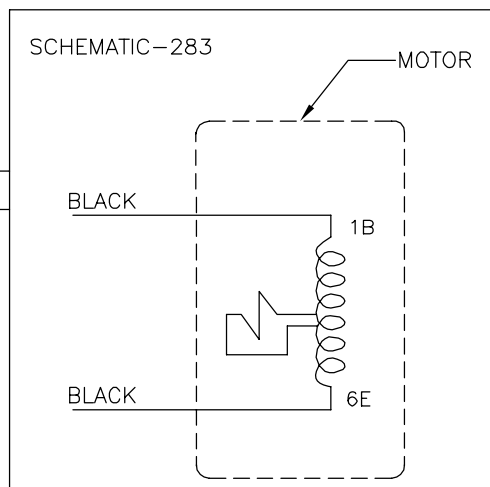
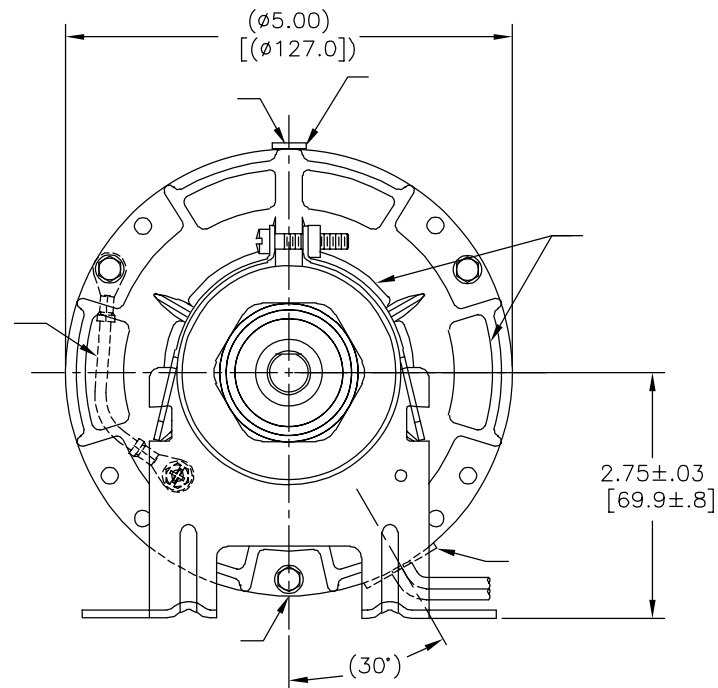
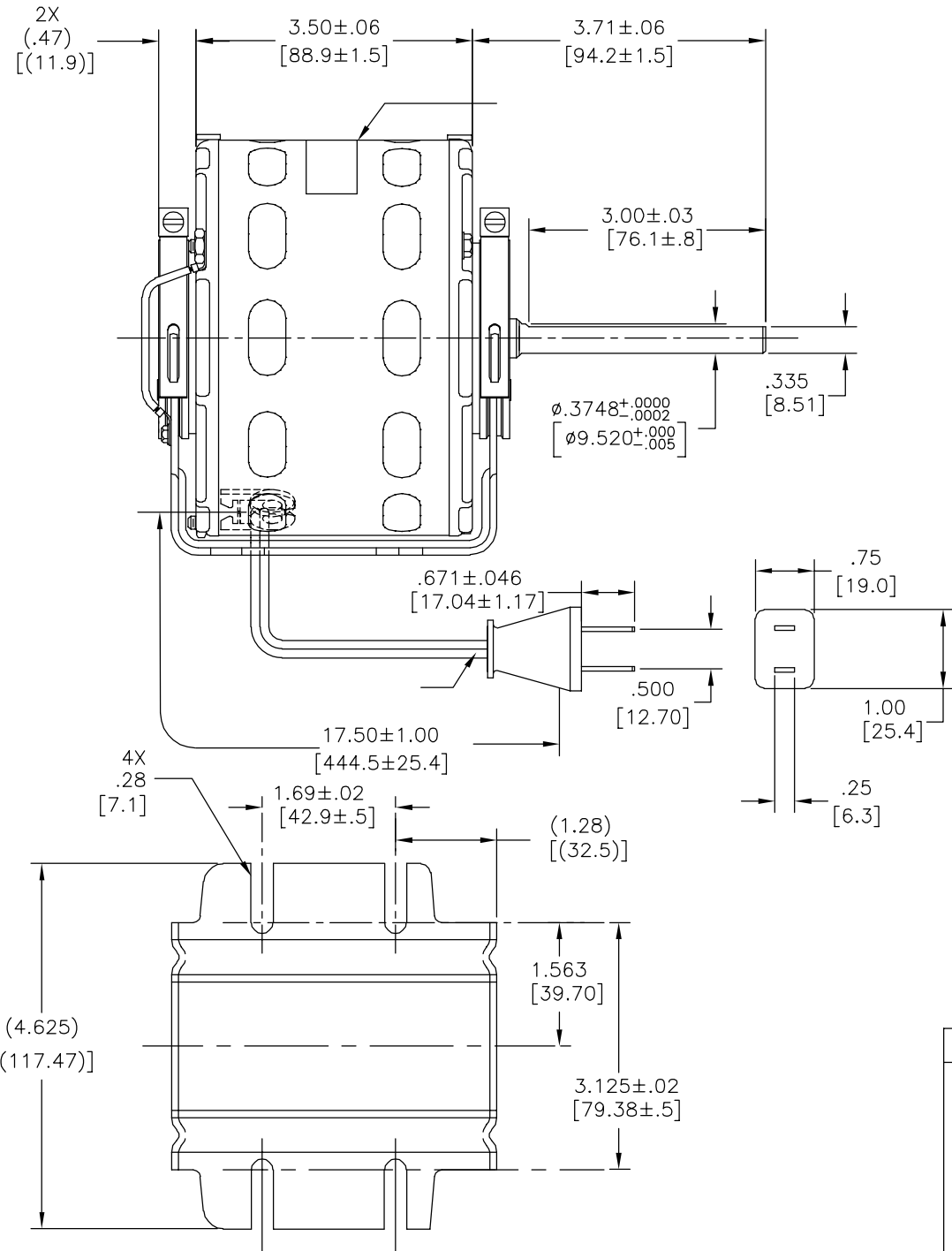
CARACTERISTICAS DE GEOMETRIA Y SIMBOLOS □ PLANICIDAD — RECTITUD ∠ ANGULARIDAD ⊥ PERPENDICULARIDAD (A ESCUADRA) // PARALELISMO ○ REDONDEZ (CIRCULARIDAD) ∅ CILINDRICIDAD △ PERFIL DE CUALQUIER SUPERFICIE ∇ PERFIL DE CUALQUIER LINEA / VARIACION ⊕ POSICION REAL ⊙ CONCENTRICIDAD = SIMETRIA	A MENOS QUE SE ESPECIFIQUE DE OTRA MANERA LAS TOLERANCIAS SON LAS COMSA. SON NUESTROS SISTEMAS EN VARIAS AREAS. DESDE 2008, XXX SMITH NO RECIBE TODOS LOS DATOS EN RECAJOS ARABES Y A LA APLICACION DE MINOR TOLERANCIAS EN LA GUADA DEL MOTOR DEBE SER DETERMINADA PULG. 0030015 0.001-0.4 FILETEAR ESQUINA: PULG. .020 mm 0.5 MAQUINAR SUPERFICIES
---	--

DIMENSIONES SIN TOLERANCIA SON DE REFERENCIA SOLO PARA IDENTIFICACION DE PARTES. DIMENSIONES EN METRICAS NUESTRAS.
---

DIBUJADO POR:	JRUPER	12-10-2004
APROBADO POR:	JRUPER	10-10-2004
TERCER ANGULO DE PROYECCION		FECHA EDS: 02-22-2008 REV. FORMATO: H
CONFIDENCIAL: ESTE DIBUJO Y SU INFORMACION SON PROPIEDAD DE USO EXCLUSIVO Y CONFIDENCIAL DE REGAL-BELOIT CORPORATION. Y NO DEBERAN SER REVELADOS, DUPLICADOS, DISTRIBUIDOS O USARSE DE OTRA MANERA SIN EL CONSENTIMIENTO ESCRITO DE REGAL-BELOIT CORPORATION. -TODOS LOS DERECHOS RESERVADOS.		

<b>REGAL REGAL-BELOIT CORPORATION</b>	
DESCRIPCION:	OUTLINE
TAMAÑO:	C
NUMERO DE DIBUJO:	DA3C7010
ESCALA:	NONE
HOJA:	1

版本	ECO	编制	日期	批准	日期
F	0029014	M.JOSEFOVSKY	10-17-2012	D.SCHUBERT	10-17-2012



ROT.:— CCWLE

**Century** Tipp City, OH  
THERMALLY PROTECTED

SER. DATE & PO# PLT LTR MOD DA3C010N# [ ]  
VOLTS 115 HZ 60 AMPS 3.2  
RPM 1000 SP 1 PH 1 CAP  
INS CL A AMB40°C HP 1/15 CONT. A.O. ←ROTATION→  
BRG SLV ASSEMBLED IN MEXICO

形位公差 □ 平面度 — 直线度 ∠ 倾斜度 ⊥ 垂直度 ∥ 平行度 ○ 圆度 ⊘ 圆柱度 ⌒ 面轮廓度 △ 线轮廓度 ⌒ 圆跳动 ⊕ 位置度 ⊙ 同轴度 ≡ 对称度	除另有注明 尺寸公差如下: 英寸 X XX XXX XXXX ±.1 ±.02 ±.005 ±.0005 毫米 ±0.5 ±0.13 ±0.013 角度 ±.50 度 清理毛刺和尖棱 英寸 .003-.015 毫米 0.1-0.4 内圆角 英寸 .020 毫米 0.5 表面粗糙度 英制 未注公差仅供参考。 米制尺寸显示在L
--	--

绘图:	JRUPER	12-10-2004
批准:	JRUPER	10-10-2004
第三角投影		图纸格式发布日期 02-22-2008 图纸格式版本 H
机密: 本图纸及相关信息所有权归REGAL-BELOIT CORPORATION. 未经REGAL-BELOIT CORPORATION书面授权, 不得泄露、 复制、传播或作其他用途。—版权所有		

<b>REGAL</b> REGAL-BELOIT CORPORATION	
名称	OUTLINE
图幅	C
图号	DA3C7010
比例	NONE
页号	1

ASME Y14.5M 1994