

PRODUCT INFORMATION PACKET

Model No: 9703

Catalog No: 9703

Fan and Blower Motor, 1/8-1/10-1/12 HP, 1 Ph, 60 Hz, 115 V, 1050 RPM, 3 Speed, 42 Frame, OPEN



Regal and are trademarks of Regal Rexnord Corporation or one of its affiliated companies.
©2022 Regal Rexnord Corporation, All Rights Reserved. MC017097E

Nameplate Specifications

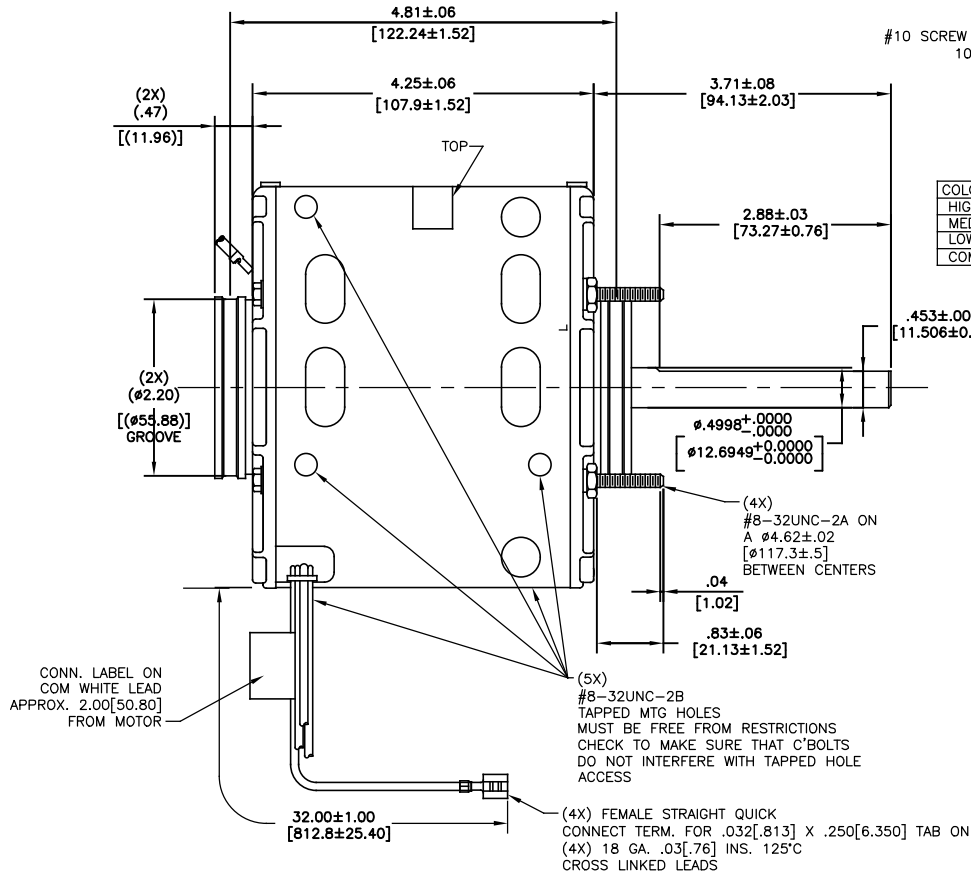
Output HP	1/8-1/10-1/12 Hp	Output KW	0.10 kW
Frequency	60 Hz	Voltage	115 V
Current	5.1,3.5,3.0 A	Speed	1050 rpm
Service Factor	1	Phase	1
Duty	Continuous Air Over	Insulation Class	B
Frame	42Y	Enclosure	Open Enclosed
Thermal Protection	Automatic	Ambient Temperature	40 °C
UL	Recognized	CSA	Y
CE	N	Number of Speeds	3

Technical Specifications

Electrical Type	Shaded Pole	Starting Method	Across The Line
Poles	6	Rotation	Counterclockwise Lead End
Mounting	Resilient Rings	Motor Orientation	Horizontal
Drive End Bearing	Sleeve	Opp Drive End Bearing	Sleeve
Frame Material	Rolled Steel	Shaft Type	Flat
Overall Length	7.96 in	Frame Length	3.67 in
Shaft Diameter	0.500 in	Shaft Extension	3.7 in
Outline Drawing	DA3F7174-S01		

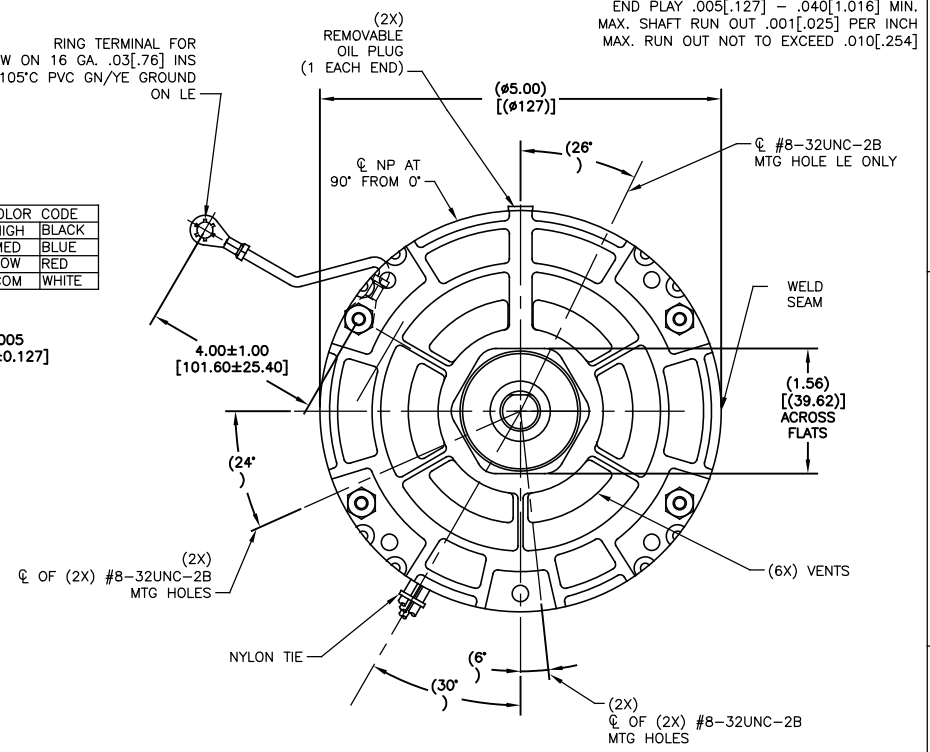
This is an uncontrolled document once printed or downloaded and is subject to change without notice. Date Created:09/15/2022

CUSTOMER IS SOLELY RESPONSIBLE FOR MOTOR PERFORMANCE AND SUITABILITY IN APPLICATIONS FOR CUSTOMER'S USES.



RING TERMINAL FOR #10 SCREW ON 16 GA. .03[.76] INS 105°C PVC GN/YE GROUND ON LE

COLOR CODE	
HIGH	BLACK
MED	BLUE
LOW	RED
COM	WHITE



END PLAY .005[.127] - .040[1.016] MIN. MAX. SHAFT RUN OUT .001[.025] PER INCH MAX. RUN OUT NOT TO EXCEED .010[.254]

NOTE
1. DISTRIBUTION PART NUMBER: 9703
GRAINGER PART NUMBER: 4UU83

ELECTRICALLY PER SAMPLE S-718E-1 CURVE #32452

SEE NOTE 1

SHCEMATIC-274

ROT:- CCWLE-CWSE

NAMEPLATE DATA:

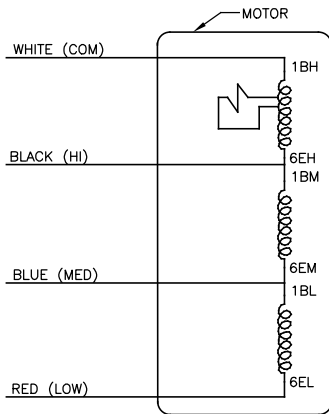
Century Tipp City, OH THERMALLY PROTECTED
 SER. DATE & P0# PLT LTR MOD DA3F174N#
 VOLTS 115 HZ 60 AMPS 5.1
 RPM 1050 SP3 PH1 CAP
 INS CL AMB °C HP CONT A.O.
 BRG SLV BK-HI 5.1A 1/8HP
 BU-MED 3.5A 1/10HP
 RD-LO 3.0A 1/12HP
 WH-COM



← ROTATION →

ASSEMBLED IN MEXICO

SAFETY WARNING
63T7433-210



DRAWING REVISION BY	DATE
H D. VALENCIANO	04-21-2021
ECR-0208934 APPROVED BY	DATE
SEE ECR M. ARGUELLES	04-21-2021

COPYRIGHT REGAL BELOIT AMERICA, INC. ALL RIGHTS RESERVED. PROPRIETARY AND CONFIDENTIAL INFORMATION - THIS DOCUMENT IS THE PROPERTY OF REGAL BELOIT AMERICA, INC. ("REGAL") AND CONTAINS OWNERS PROPRIETARY INFORMATION. ANY REPRODUCTION OR OTHER FORM RECEIVED BY YOU IS LIMITED TO THE EXTENT OF THE ORIGINAL. REGAL SHALL NOT BE HELD RESPONSIBLE FOR ANY REPRODUCTION OR OTHER FORM RECEIVED BY YOU. REGAL SHALL BE HELD RESPONSIBLE FOR ANY REPRODUCTION OR OTHER FORM RECEIVED BY YOU. REGAL SHALL BE HELD RESPONSIBLE FOR ANY REPRODUCTION OR OTHER FORM RECEIVED BY YOU.

DRAWN BY:	DATE:	DESCRIPTION:
APPROVED BY:	DATE:	DESCRIPTION:
REFERENCE:	MATERIAL:	PROCESS/FINISH:
THIRD ANGLE PROJECTION	SIZE DWG NO	SHEET
	C	1

Regal Beloit America, Inc.
MODEL-RFHP-42FR
OUTLINE

DA3F174