

PRODUCT INFORMATION PACKET



Model No: B121
Catalog No: B121

Pool Pump Motor, 3/4 HP, 1 Ph, 60 Hz, 230/115 V, 3600 RPM, S56C Frame, DP



Regal and Century are trademarks of Regal Rexnord Corporation or one of its affiliated companies.
©2024 Regal Rexnord Corporation, All Rights Reserved. MC017097E





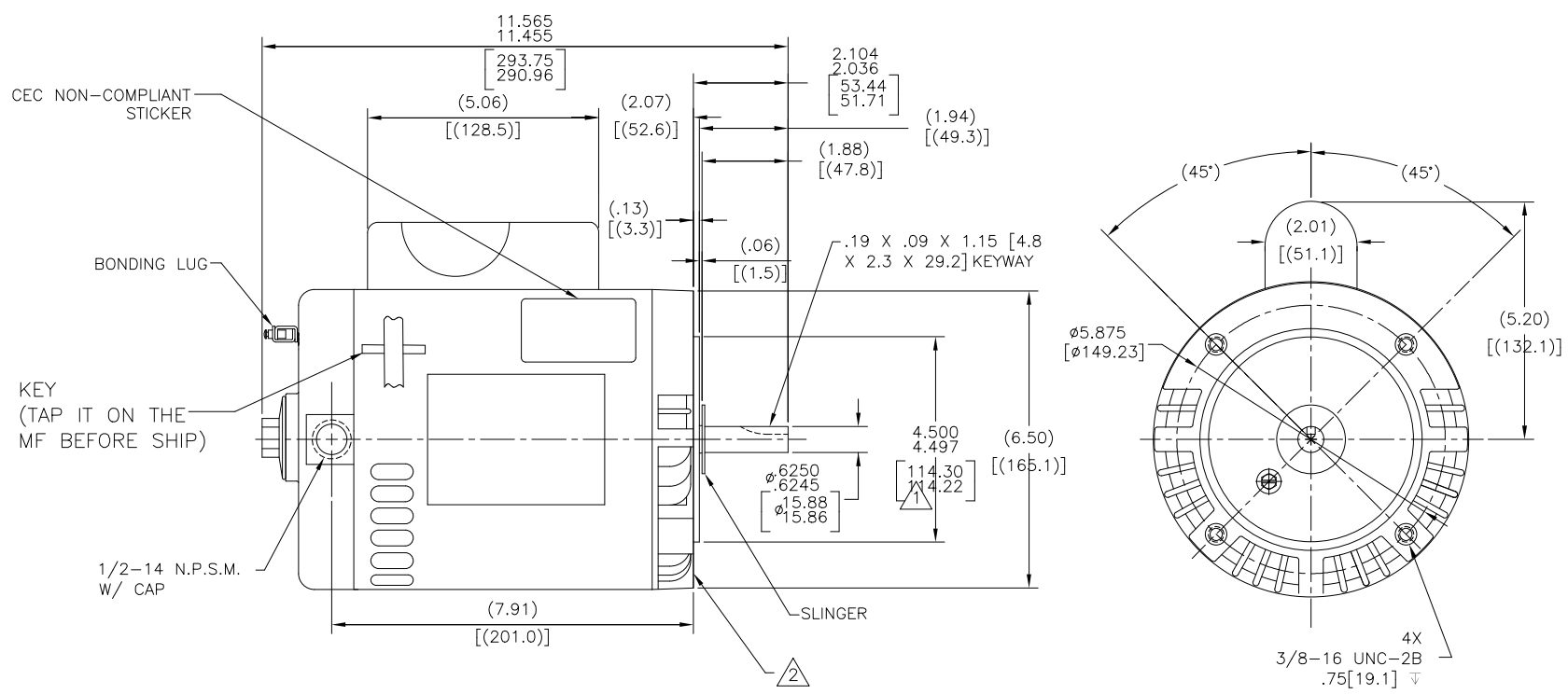
Nameplate Specifications

Phase	1	Output HP	3/4 Hp
Output KW	0.56 kW	Voltage	230/115 V
Speed	3450 rpm	Service Factor	1.5
Frame	S56C	Enclosure	Drip Proof
Thermal Protection	Thermally Protected	Ambient Temperature	50 °C
Frequency	60 Hz	Current	SF 6.0/12.0 A
Duty	Continuous	Insulation Class	B
UL	Recognized	CSA	Y
Number of Speeds	1		

Technical Specifications

Electrical Type	Permanent Split Capacitor, Single Or Dual Voltage	Poles	2
Rotation	Counterclockwise Pump End	Mounting	Round
Motor Orientation	Horizontal	Drive End Bearing	Ball
Opp Drive End Bearing	Ball	Frame Material	Rolled Steel
Shaft Type	5/8 Keyed	Overall Length	11.44 in
Frame Length	6.38 in	Shaft Diameter	0.625 in
Shaft Extension	2.07 in		
Outline Drawing	B121-S01	Connection Drawing	17536715.PCX

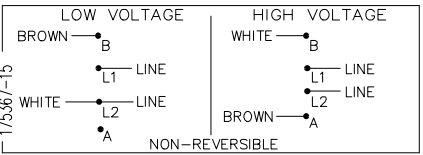
This is an uncontrolled document once printed or downloaded and is subject to change without notice. Date Created:05/29/2024



NAMEPLATE DATA

MODEL: 164298
 CUST PN: B121
 HP: 3/4 SF: 1.50
 ROT: CCWPE
 RPM: 3450
 TYPE: CX CODE: J
 FORM: - FRAME: S 56 C
 VOLTS: 230/115
 AMPS: SF 6.0/12.0
 MAX AMPS: -
 SF AMPS: -
 PH: 1 HZ: 60
 INS: B AMB: 50°C
 DUTY: CONT
 ENCLOSURE: ODP
 THERMALLY PROTECTED

EXTERNAL CONNECTION DIAGRAM



NOTES

- 1 PILOT DIAMETER IS CONCENTRIC WITH SHAFT CENTERLINE WITHIN .004[.10] T.I.R.
- 2 FACE OF MOUNTING FLANGE IS PERPENDICULAR TO SHAFT CENTERLINE WITHIN .004[.10] T.I.R.
- 3. SHAFT RUNOUT NOT TO EXCEED .002[.05] T.I.R
- 4. END PLAY NOT TO EXCEED .010[.25] MEASURED WITH NO THRUST
- 5. FINISH PAINT TO BE BLACK

PERFORMANCE CURVE

APPROVED SAMPLE

16345111		-	
UL COMPONENT		CSA	
FILE#	CCN#	FILE#	GUIDE#
E14663	XZWR2	LR4642	4211-01

CUSTOMER	DISTRIBUTION
----------	--------------

DRAWING REVISION	REVISION BY	DATE	TOLERANCES UNLESS OTHERWISE SPECIFIED
G	S. JIMENEZ	5-23-2024	DEC. INCH mm ANGLE
ECO	APPROVED BY	5-23-2024	.XX ±0.02 (±0.51)
ECR-0234305	S. JIMENEZ		.XXX ±0.005 (±0.127)
SEE ECO			.XXXX ±0.0005 (±0.0127)

DRAWN BY:	KHR
DATE:	08-30-2005
APPROVED BY:	JMW
DATE:	02-28-2006
REFERENCE:	
MATERIAL:	
PROCESS/FINISH:	

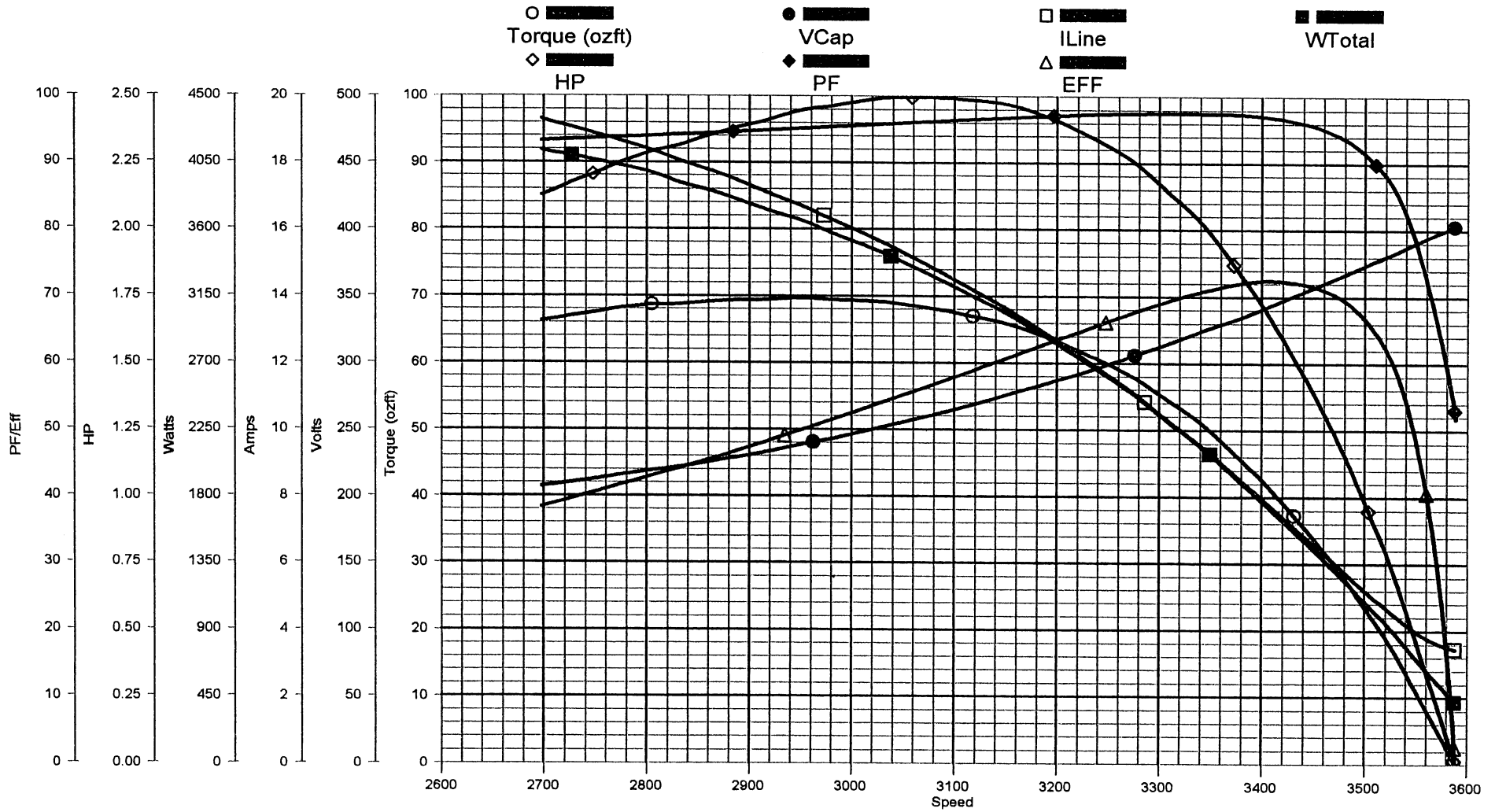
Regal Beloit America, Inc.	
DESCRIPTION MODEL-CFHP-56FR OUTLINE	
SIZE	DWG NO B121
SHEET	1

PROPRIETARY AND CONFIDENTIAL INFORMATION - THIS DOCUMENT IS THE PROPERTY OF REGAL BELOIT AMERICA, INC. ("OWNER") AND CONTAINS OWNER'S PROPRIETARY INFORMATION. ANY PERSON, CORPORATION OR OTHER FIRM RECEIVING IT IS DEEMED BY RECEIVING IT, TO AGREE THAT IT AND/OR ANY PART OF IT, SHALL NOT BE DISCLOSED TO ANY PERSON, CORPORATION OR OTHER ENTITY, DUPLICATED, AND/OR USED, EXCEPT AS EXPRESSLY APPROVED IN WRITING IN ADVANCE BY OWNER. THIS DOCUMENT SHALL BE RETURNED TO OWNER UPON REQUEST. IT MAY BE SUBJECT TO CERTAIN RESTRICTIONS UNDER APPLICABLE EXPORT CONTROL LAWS AND REGULATIONS.

AO Smith

Performance Down Project: 0444227 (High Speed)

Thursday, September 02, 2004 05:50 AM



TRACKING #: 10028999
 SBU: Pump
 ENGINEER: DWAYNE FOX
 TECHNICIAN: DAN
 BENCH: 2
 TORQUE CELL: 350 lb-in
 NP RPM: 3450
 # SPEEDS: 1
 MOTOR #: 1
 TYPE: CX

CUSTOMER:
 MODEL: 0444227A
 FRAME: P56Y
 PHASES: 1
 HP:
 VOLTS: 230.0
 HERTZ: 60
 START CAP: 0.00
 RUN CAP: 25.00
 COMMENT3:

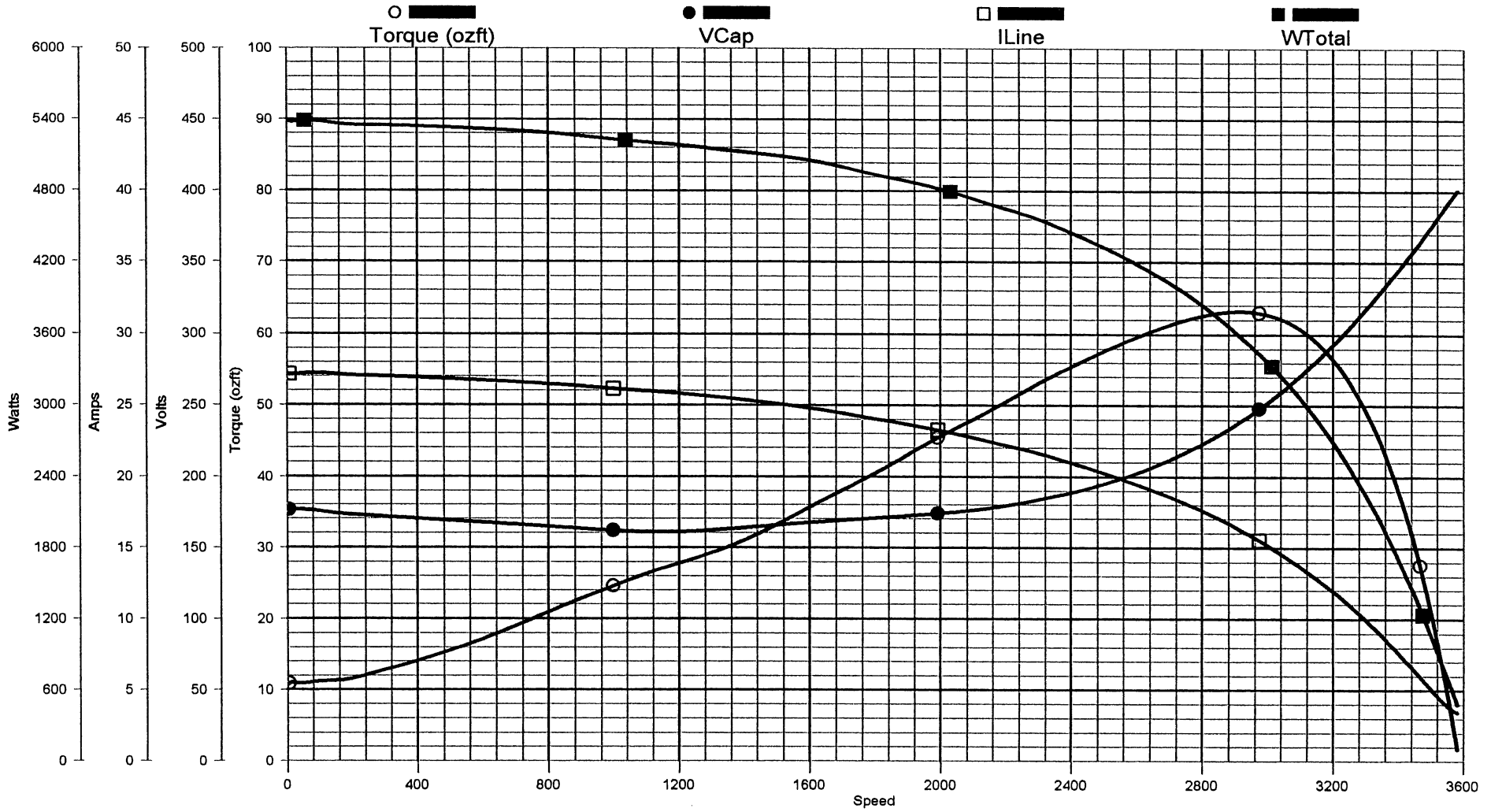
LOCK AMPS: 27.2A
LOCK TORQUE: 12.0 oz-ft
BREAKDOWN TORQUE: 69.6 oz-ft

DESCRIPTION: OFFSET
 BDT: 69.67
 MT: 69.67
 SF: 35.10
 LRT: 0.00
 LRA: 0.00
 PUT: 0.00
 COMMENT1:
 COMMENT2:
 COMMENT4:

AO Smith

Performance Up Project: 0444227 (High Speed)

Thursday, September 02, 2004 06:03 AM



TRACKING #: 10028999
 SBU: Pump
 ENGINEER: DWAYNE FOX
 TECHNICIAN: DAN
 BENCH: 2
 TORQUE CELL: 350 lb-in
 NP RPM: 3450
 # SPEEDS: 1
 MOTOR #: 1
 TYPE: CX

CUSTOMER:
 MODEL: 0444227A
 FRAME: P56Y
 PHASES: 1
 HP:
 VOLTS: 230.0
 HERTZ: 60
 START CAP: 0.00
 RUN CAP: 25.00
 COMMENT3:

DESCRIPTION: 0-SYNC
 BDT: 63.15
 MT: 63.15
 SF: 35.10
 LRT: 10.67
 LRA: 27.14
 PUT: 10.67
 COMMENT1:
 COMMENT2:
 COMMENT4: