

# PRODUCT INFORMATION PACKET



Model No: B2973  
Catalog No: B2973  
Pool Pump Motor, .75/.10 HP, 1 Ph, 60 Hz, 115 V, 3600 RPM, Y56J Frame, DP



Regal and Century are trademarks of Regal Rexnord Corporation or one of its affiliated companies.  
©2022 Regal Rexnord Corporation, All Rights Reserved. MC017097E





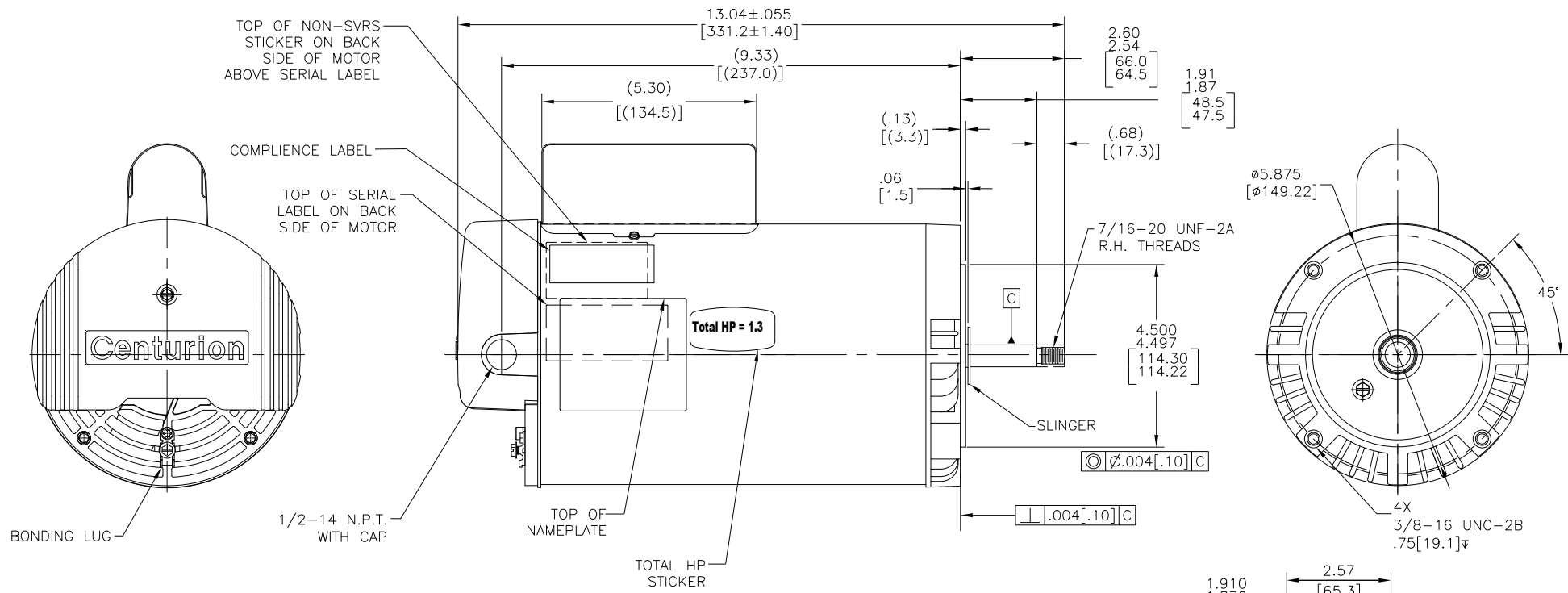
**Nameplate Specifications**

Output HP	.75/.10 Hp	Output KW	0.56 kW
Frequency	60 Hz	Voltage	115 V
Current	SF 12.4/2.4 A	Speed	3450/1725 rpm
Service Factor	1.5	Phase	1
Duty	Continuous	Insulation Class	F
Frame	Y56J	Enclosure	Drip Proof
Thermal Protection	Thermally Protected	Ambient Temperature	50 °C
UL	Recognized	CSA	Y
Number of Speeds	2-2VT		

**Technical Specifications**

Electrical Type	Psc Low Speed, Cap Start/Cap Run High Speed	Poles	2/4
Rotation	Clockwise	Mounting	C Face
Motor Orientation	Horizontal	Drive End Bearing	Ball
Opp Drive End Bearing	Ball	Frame Material	Rolled Steel
Shaft Type	7/16 THREADS	Overall Length	12.30 in
Frame Length	7.38 in	Shaft Diameter	0.625 in
Shaft Extension	2.57 in		
Connection Drawing	D0000026-001	Outline Drawing	B2973-S01

This is an uncontrolled document once printed or downloaded and is subject to change without notice. Date Created:11/29/2022

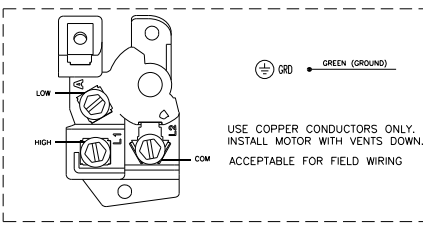


NAMEPLATE DATA

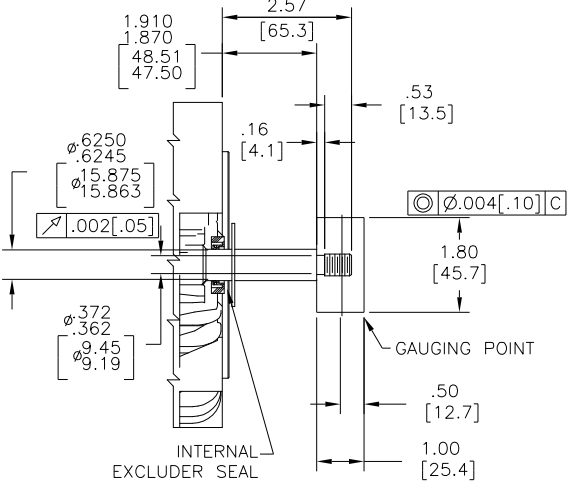
EXTERNAL CONNECTION DIAGRAM

NOTES

MODEL: F56AA73A01  
 CUST PN: B2973  
 HP: 0.75/0.1 SF: 1.5  
 ROT: CW  
 RPM: 3450/1725  
 TYPE: CXCP CODE: H  
 FORM: KJM FRAME: Y56J  
 VOLTS: 115  
 AMPS: 9.5/1.8  
 MAX AMPS:  
 SF AMPS: 12.4/2.4  
 PH: 1 HZ: 60  
 INS: F AMB: 50°C  
 DUTY: CONT  
 ENCLOSURE: ODP  
 THERMALLY PROTECTED



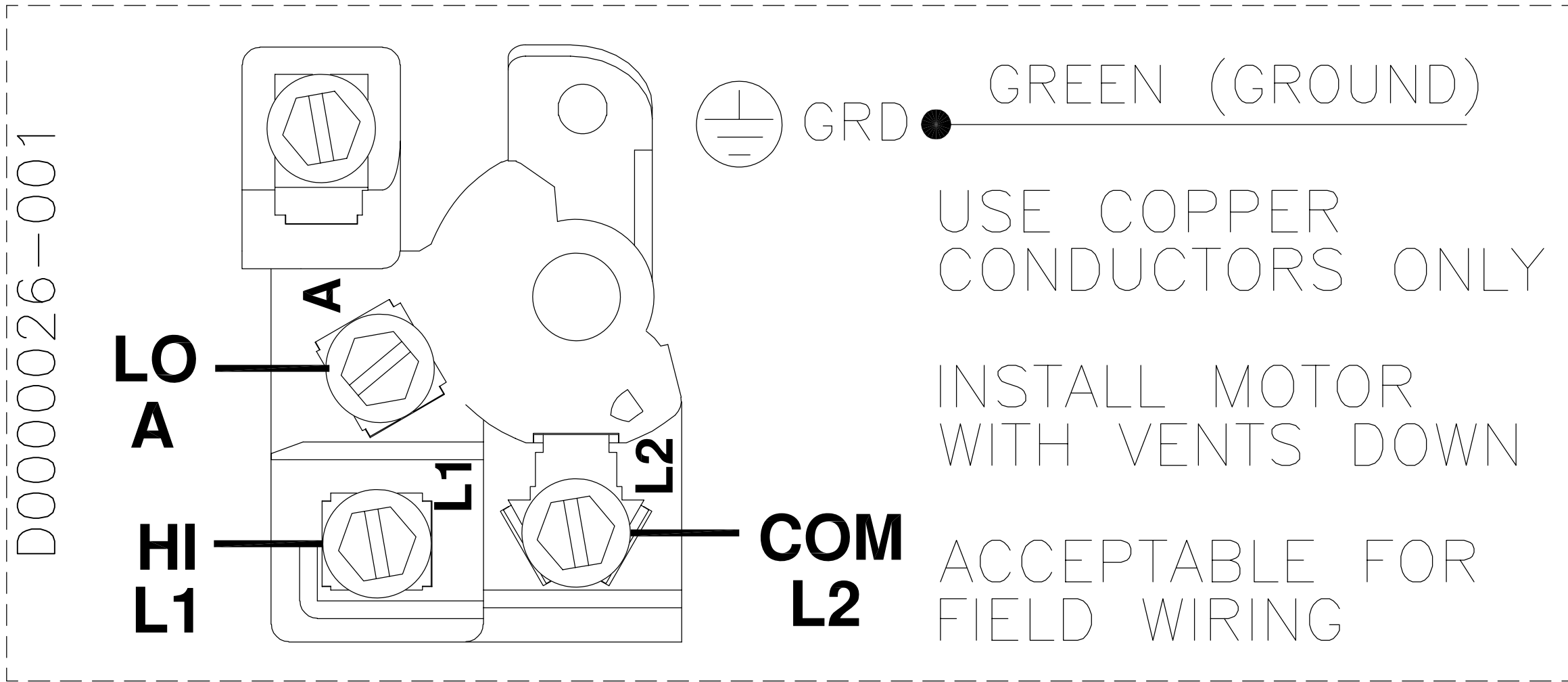
1. FOR THREADED SHAFT EXT. ECCENTRICITY OF THREADED PORTION OF SHAFT IS HELD WITHIN .004[.10] TOTAL GAGE READING WITH THE INDICATOR ON O.D. OF GROUND RING GAGE AS SHOWN. THE GAGE BEING STATIONARY WITH RESPECT TO THE ROTOR.
2. END PLAY NOT TO EXCEED .010[.25] MEASURED WITH NO THRUST.
3. ALL DIMENSIONS SHOWN IN PARENTHESIS ARE REFERENCE DIMENSIONS.



PERFORMANCE CURVE		APPROVED SAMPLE	
0116757		CSR-0001592	
UL COMPONENT		CSA	
FILE#	CCN#	FILE#	GUIDE#
PENDING	PENDING	PENDING	PENDING
CUSTOMER	DISTRIBUTION		

DRAWING REVISION	REVISION BY	DATE	TOLERANCES UNLESS OTHERWISE SPECIFIED	DRAWN BY:					
E	SHESHI	09/30/2021	DEC. INCH mm ANGLE	YL					
ECO	APPROVED BY	DATE	.X ±0.1 [±2.5] ±0.5	DATE:	5/23/2011				
ECR-0211353	D.SURYAWANSHI	09/30/2021	.XX ±0.02 [±0.51]	APPROVED BY:					
ECO DESCRIPTION			.XXX ±0.005 [±0.127]	MY	DATE:				
UPDATED PER ECR-0211353			.XXXX ±0.0005 [±0.0127]	DATE:	5/23/2011				
<small>                 COPYRIGHT REGAL BELOIT AMERICA, INC. ALL RIGHTS RESERVED.                  PROPRIETARY AND CONFIDENTIAL INFORMATION - THIS DOCUMENT IS THE PROPERTY OF REGAL BELOIT AMERICA, INC. (OWNER) AND CONFANS OWNER'S PROPRIETARY INFORMATION. ANY PERSON, CORPORATION OR OTHER ENTITY, DUPLICATED, AND/OR USED, EXCEPT AS EXPRESSLY APPROVED IN WRITING IN ADVANCE BY OWNER, THIS DOCUMENT SHALL BE RETURNED TO OWNER UPON REQUEST. IT MAY BE SUBJECT TO CERTAIN RESTRICTIONS UNDER APPLICABLE EXPORT CONTROL LAWS AND REGULATIONS.             </small>			REMOVE BURRS & BREAK SHARP EDGES .003[.015] [0.076[.381]]	REFERENCE	MATERIAL	N/A	PROCESS/FINISH	N/A	
			CORNER FILLETS .02 [51]	THIRD ANGLE PROJECTION	SIZE	DWG NO	B2973	SHEET	1
			MACHINED SURFACES .12 [3.05]		C				
			mm SHOWN IN [BRACKETS]						

REV	ECO	REV BY	DATE	APPD	DATE
D	0013035	VMS	03-18-2010	JOSUE	03-18-2010



(TWO SPEED)

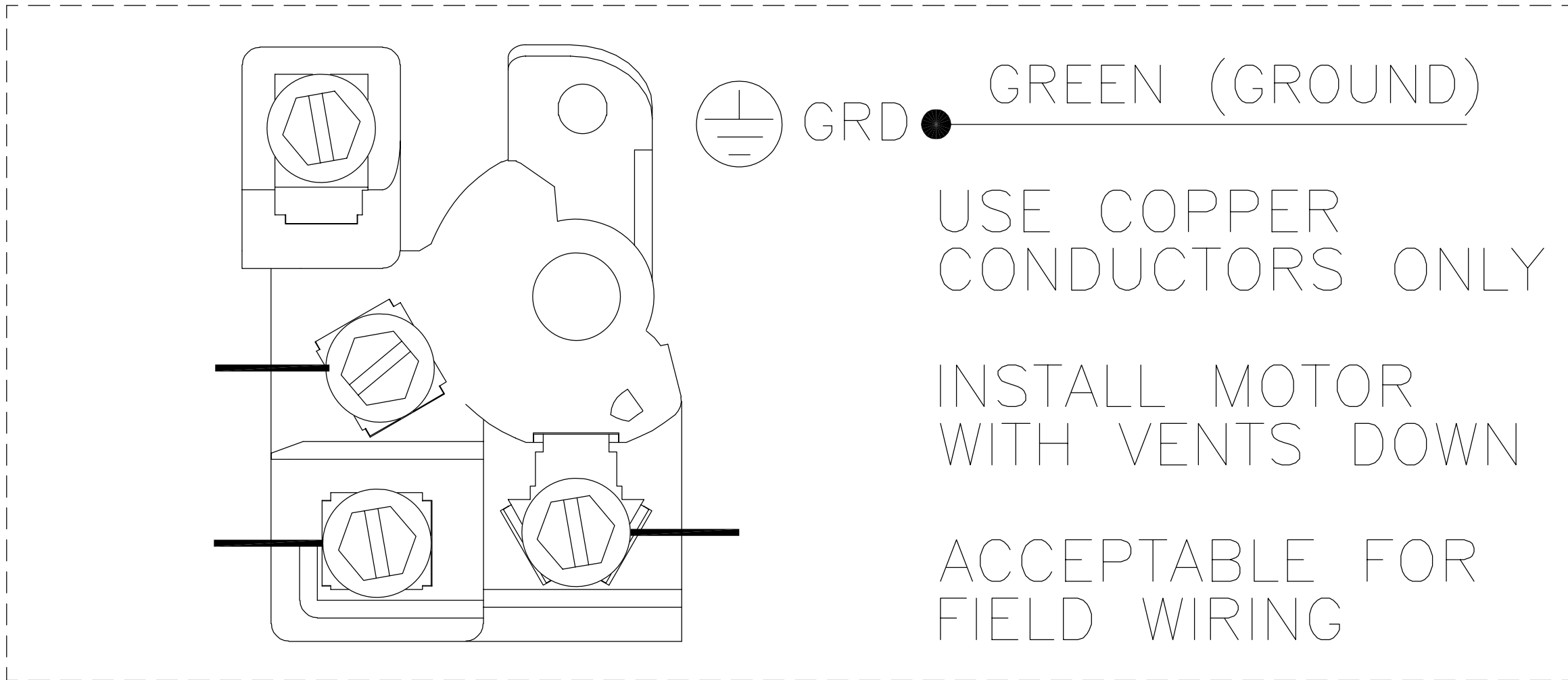
GEOMETRIC CHARACTERISTICS & SYMBOLS  
 ▭ FLATNESS  
 — STRAIGHTNESS  
 < ANGULARITY  
 ⊥ PERPENDICULARITY (SQUARENESS)  
 // PARALLELISM  
 ○ ROUNDNESS (CIRCULARITY)  
 ∅ CYLINDRICITY  
 △ PROFILE OF ANY SURFACE  
 ∩ PROFILE OF ANY LINE  
 ↑ RUNOUT  
 ⊕ TRUE POSITION  
 ◎ CONCENTRICITY  
 = SYMMETRY

UNLESS OTHERWISE SPECIFIED  
 DIM. TOLERANCES ARE AS FOLLOWS:  
 INCH  $\pm .1$   $\pm .02$   $\pm .005$   $\pm .0005$   
 mm  $\pm 0.5$   $\pm 0.13$   $\pm 0.013$   
 ANG.  $\pm .50$  DEG  
 REMOVE BURRS & BREAK SHARP EDGES:  
 INCH .003-.015 mm 0.1-0.4  
 CORNER FILLETS TO:  
 INCH .020 mm 0.5  
 MACHINE SURFACES:  
 INCH 125 mm 3.2  
 METRIC DIMS. SHOWN IN [BRACKETS]

DR BY: Josue 07-15-2008  
 APPD: M. OVERHOLSER 07-15-2008  
 THIRD ANGLE PROJECTION  
 EDS DATE 02-22-2008  
 FORMAT REV F  
 CONFIDENTIAL: THIS DRAWING AND ITS INFORMATION ARE THE EXCLUSIVE AND CONFIDENTIAL PROPERTY OF A.O. SMITH CORP. AND ARE NOT TO BE DISCLOSED, DUPLICATED, DISTRIBUTED OR OTHERWISE USED WITHOUT THE WRITTEN CONSENT OF A.O. SMITH CORP.  
 -ALL RIGHTS RESERVED. ASME Y14.5M 1994

		<b>ELECTRICAL PRODUCTS COMPANY</b> <small>A DIVISION OF A. O. SMITH CORPORATION</small>	
DESCRIPTION			
CONN DIAGRAM - NAMEPLATE			
SIZE	A	DWG NO	D0000026-001
SCALE	NONE	SHEET	1

REVISION:	ECO	REVISADO POR:	FECHA:	APROBADO POR:	FECHA:
D	0013035	VMS	03-18-2010	JOSUE	03-18-2010



(DOS VELOCIDADES)

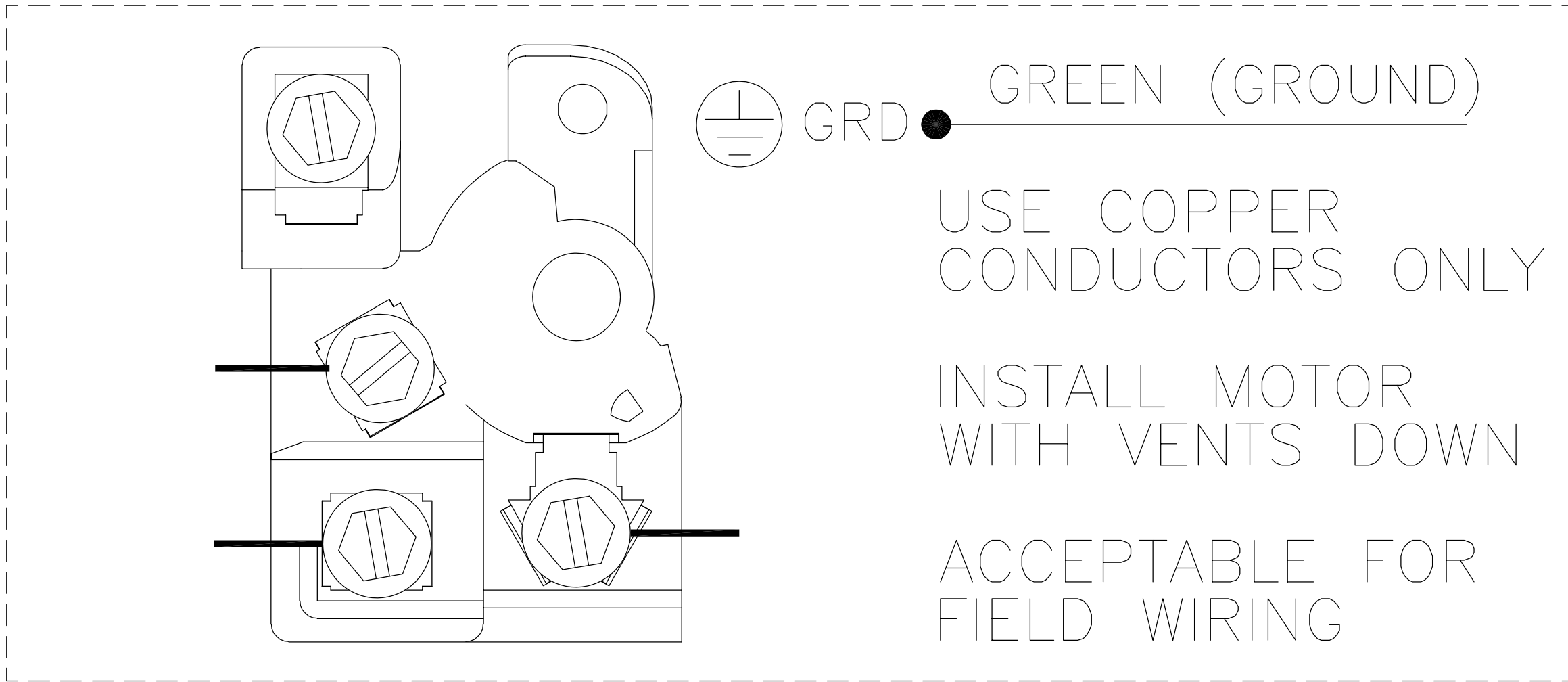
CARACTERISTICAS DE GEOMETRIA Y SIMBOLOS  
 ▽ PLANICIDAD  
 — RECTITUD  
 < ANGULARIDAD  
 ⊥ PERPENDICULARIDAD (A ESCUADRA)  
 // PARALELISMO  
 ○ REDONDEZ (CIRCULARIDAD)  
 ⌀ CILINDRICIDAD  
 △ PERFIL DE CUALQUIER SUPERFICIE  
 ∩ PERFIL DE CUALQUIER LINEA  
 ↑ VARIACION  
 ⊕ POSICION REAL  
 ⊙ CONCENTRICIDAD  
 = SIMETRIA

A MENOS QUE SE ESPECIFIQUE DE OTRA MANERA, LAS TOLERANCIAS DE LAS DIMS; SON LAS SIGUIENTES:  
 X XX XXX XXXX  
 PULG ±.1 ±.02 ±.005 ±.0005  
 mm ±0.5 ±0.13 ±0.013  
 ANG. ±.50 GRADOS  
 ELIMINAR REBABAS Y ORILLAS FILOSAS DEL BORDE.  
 PULG .003-.015 mm 0.1-0.4  
 FILETEAR ESQUINA: PULG .020 mm 0.5  
 MAQUINAR SUPERFICIES  
 PULG 125 mm 3.2  
 DIMS METRICAS MOSTRADAS [PARENTESIS]

DIBUJADO POR: Josue 07-15-2008  
 APROBADO POR: M. OVERHOLSER 07-15-2008  
 TERCER ANGULO DE PROYECCION FECHA EDS: 02-22-2008  
 REV. FORMATO: F  
 CONFIDENCIAL: ESTE DIBUJO Y SU INFORMACION SON PROPIEDAD DE USO EXCLUSIVO Y CONFIDENCIAL DE A.O.SMITH CORP. Y NO DEBERAN SER REVELADOS, DUPLICADOS, DISTRIBUIDOS O USARSE DE OTRA MANERA SIN EL CONSENTIMIENTO ESCRITO DE A.O. SMITH CORP.  
 -TODOS LOS DERECHOS RESERVADOS.ASME Y14.5M 1994

<b>ELECTRICAL PRODUCTS COMPANY</b> <small>A DIVISION OF A. O. SMITH CORPORATION</small>	
DESCRIPCION: CONN DIAGRAM - NAMEPLATE	
TAMAÑO: A	NUMERO DE DIBUJO: D0000026-001
ESCALA: NONE	HOJA: 1

版本	ECO	编制	日期	批准	日期
D	0013035	VMS	03-18-2010	JOSUE	03-18-2010



- 形位公差
- 平面度
- 直线度
- ∠ 倾斜度
- ⊥ 垂直度
- // 平行度
- 圆度
- ⊘ 圆柱度
- △ 面轮廓度
- ⌒ 线轮廓度
- ↗ 圆跳动
- ⊕ 位置度
- ◎ 同轴度
- ≡ 对称度

除另有注明  
尺寸公差如下:

	X	XX	XXX	XXXX
英寸	±.1	±.02	±.005	±.0005
毫米	±0.5	±0.13	±0.013	

角度 ±.50 度  
清理毛刺和尖棱  
英寸 .003-.015 毫米 0.1-0.4  
内圆角  
英寸 .020 毫米 0.5  
表面粗糙度  
英制 125 米制 3.2

米制尺寸显示在 [ ]

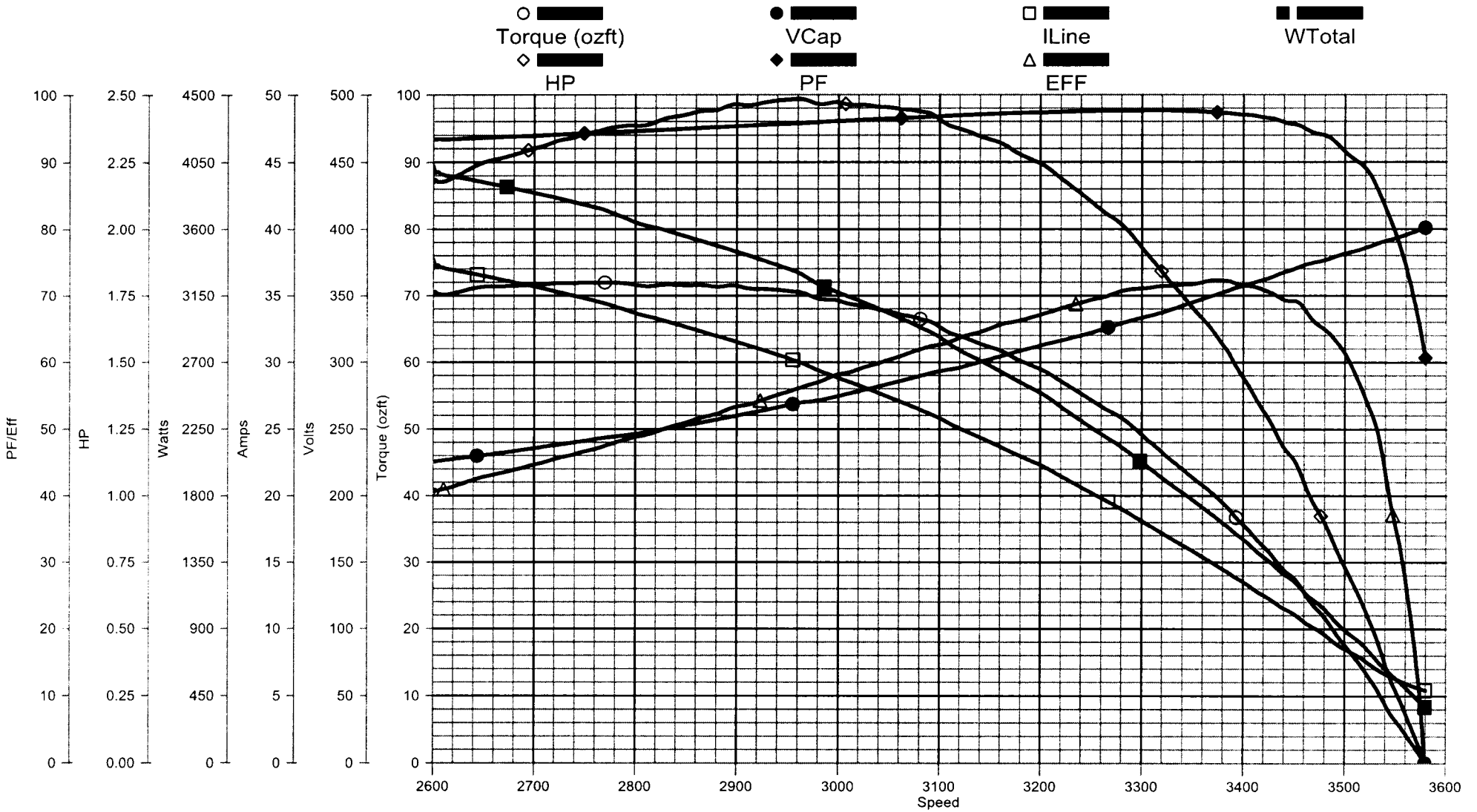
绘图:	Josue	07-15-2008
批准:	M. OVERHOLSER	07-15-2008
第三角投影		图纸格式发布日期 02-22-2008 图纸格式版本 F
机密: 本图纸及相关信息所有权归A. O. SMITH公司所有。 未经A. O. SMITH公司书面授权, 不得泄露、复制、传播或作 其他用途。—版权所有		
ASME Y14.5M 1994		

		<b>ELECTRICAL PRODUCTS COMPANY</b> <small>A DIVISION OF A. O. SMITH CORPORATION</small>	
名称		CONN DIAGRAM - NAMEPLATE	
图幅	A	图号	D0000026-001
比例	NONE	页号	1

# AO Smith

Performance Test    Project: 0801560 (High Speed)

Tuesday, August 19, 2008 02:25 PM

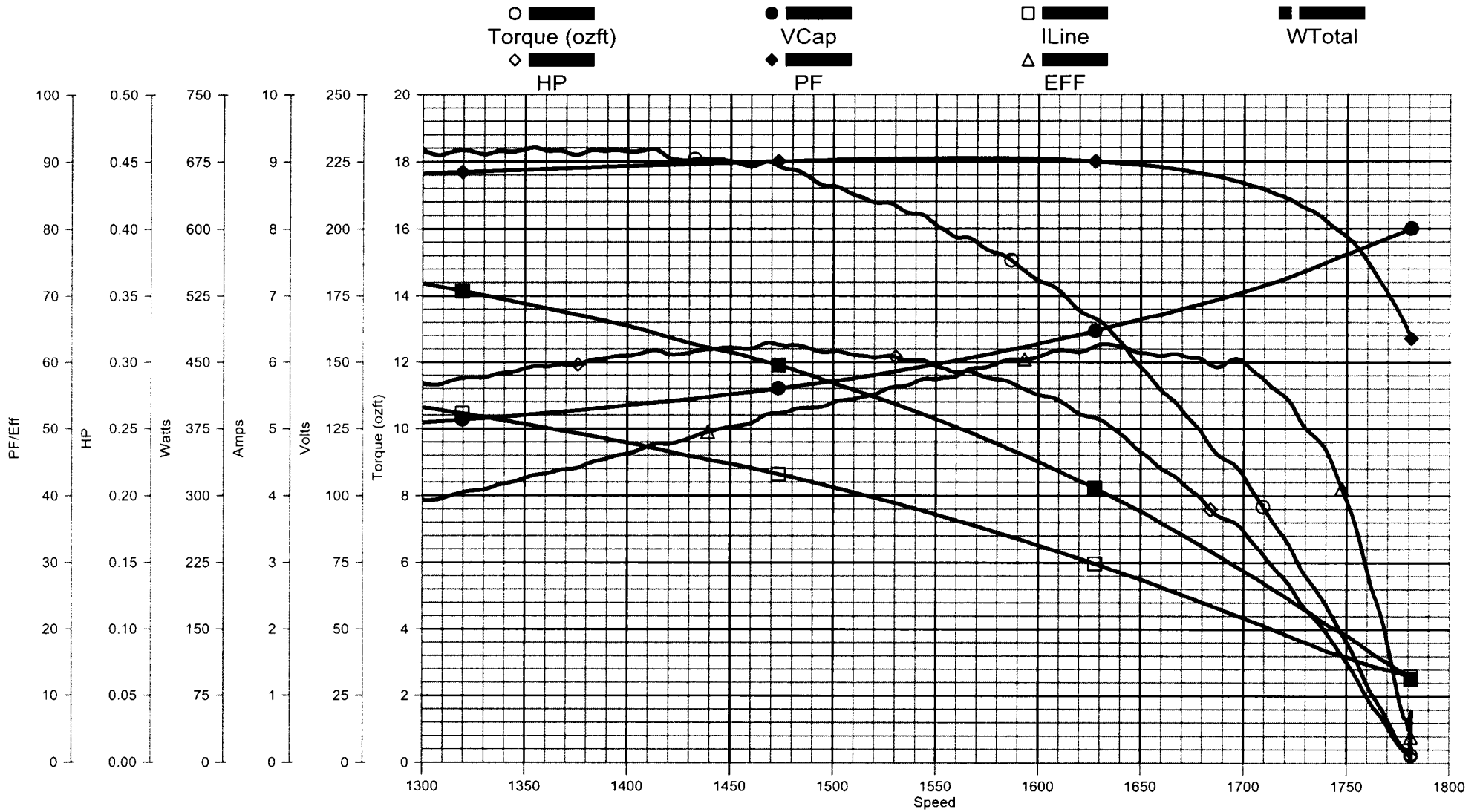


TRACKING #: 10068065 SBU: Pump ENGINEER: DWAYNE FOX TECHNICIAN: TODD BENCH: 2 TORQUE CELL: 500-1 inlb NP RPM: 3450 # SPEEDS: 2 MOTOR #: 1 TYPE: CXCP	CUSTOMER: DISTRIBUTION MODEL: 0801560A FRAME: 56 PHASES: 1 HP: 0.75 VOLTS: 115.0 HERTZ: 60 START CAP: 0.00 RUN CAP: 25.00 COMMENT3:	DESCRIPTION: OFFSET BDT: 71.63 MT: 71.96 SF: 49.50 LRT: 0.00 LRA: 0.00 PUT: 0.00 COMMENT1: COMMENT2: COMMENT4:
---	--	---

# AO Smith

Performance Test    Project: 0801560    (Low Speed)

Tuesday, August 19, 2008    03:13 PM



TRACKING #: 10068065  
 SBU: Pump  
 ENGINEER: DWAYNE FOX  
 TECHNICIAN: TODD  
 BENCH: 2  
 TORQUE CELL: 500-1 inlb  
 NP RPM: 1725  
 # SPEEDS: 2  
 MOTOR #: 1  
 TYPE: CXCP

CUSTOMER: DISTRIBUTION  
 MODEL: 0801560A  
 FRAME: 56  
 PHASES: 1  
 HP: 0.10  
 VOLTS: 115.0  
 HERTZ: 60  
 START CAP: 124.00  
 RUN CAP: 20.00  
 COMMENT3:

DESCRIPTION: OFFSET  
 BDT: 18.37  
 MT: 18.41  
 SF: 12.40  
 LRT: 0.00  
 LRA: 0.00  
 PUT: 0.00  
 COMMENT1:  
 COMMENT2:  
 COMMENT4: