

PRODUCT INFORMATION PACKET



Model No: B2975

Catalog No: B2975

Pool Pump Motor, 1.0/ .12 HP, 1 Ph, 60 Hz, 230 V, 3600 RPM, Y56J Frame, DP



Regal and Century are trademarks of Regal Rexnord Corporation or one of its affiliated companies.
©2025 Regal Rexnord Corporation, All Rights Reserved. MC017097E





Nameplate Specifications

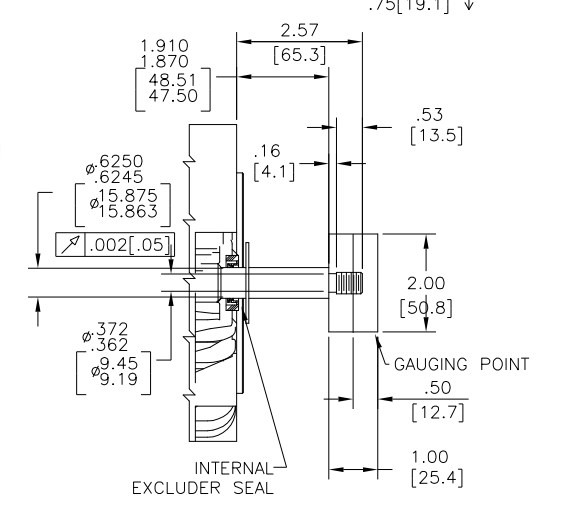
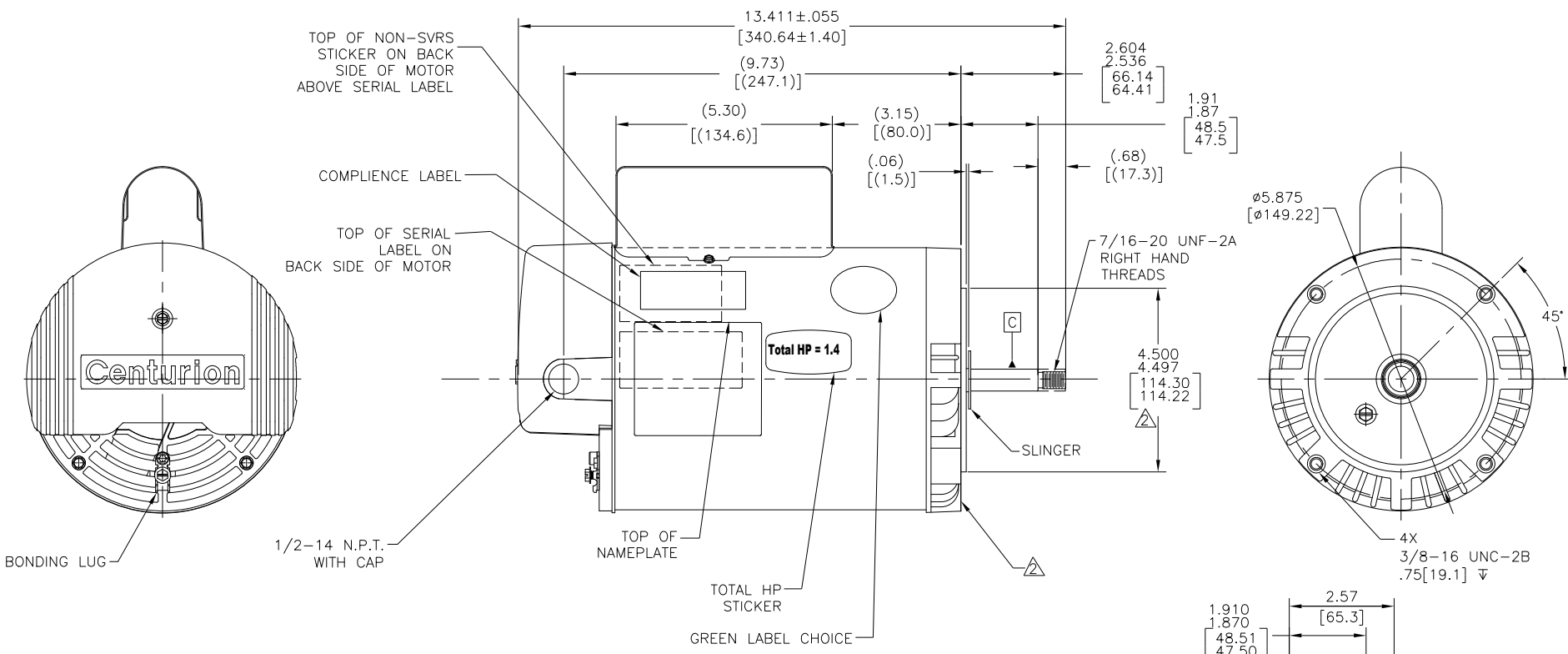
Phase	1	Output HP	1.0/ .12 Hp
Output KW	0.75 kW	Voltage	230 V
Speed	3450/1725 rpm	Service Factor	1.40
Frame	Y56J	Enclosure	Drip Proof
Thermal Protection	Thermally Protected	Ambient Temperature	50 °C
Frequency	60 Hz	Current	SF 6.6/1.25 A
Duty	Continuous	Insulation Class	F
UL	Recognized	CSA	Y
Number of Speeds	2-2VT		

Technical Specifications

Electrical Type	Psc Low Speed, Cap Start/Cap Run High Speed	Starting Method	Across The Line
Poles	2/4	Rotation	Clockwise
Mounting	Round	Motor Orientation	Horizontal
Drive End Bearing	Ball Brg	Opp Drive End Bearing	Ball
Frame Material	Rolled Steel	Shaft Type	Threaded
Overall Length	13.05 in	Frame Length	7.75 in
Shaft Diameter	0.625 in	Shaft Extension	2.57 in
Outline Drawing	B2975-S01	Connection Drawing	D0000026-001

This is an uncontrolled document once printed or downloaded and is subject to change without notice. Date Created:11/06/2025

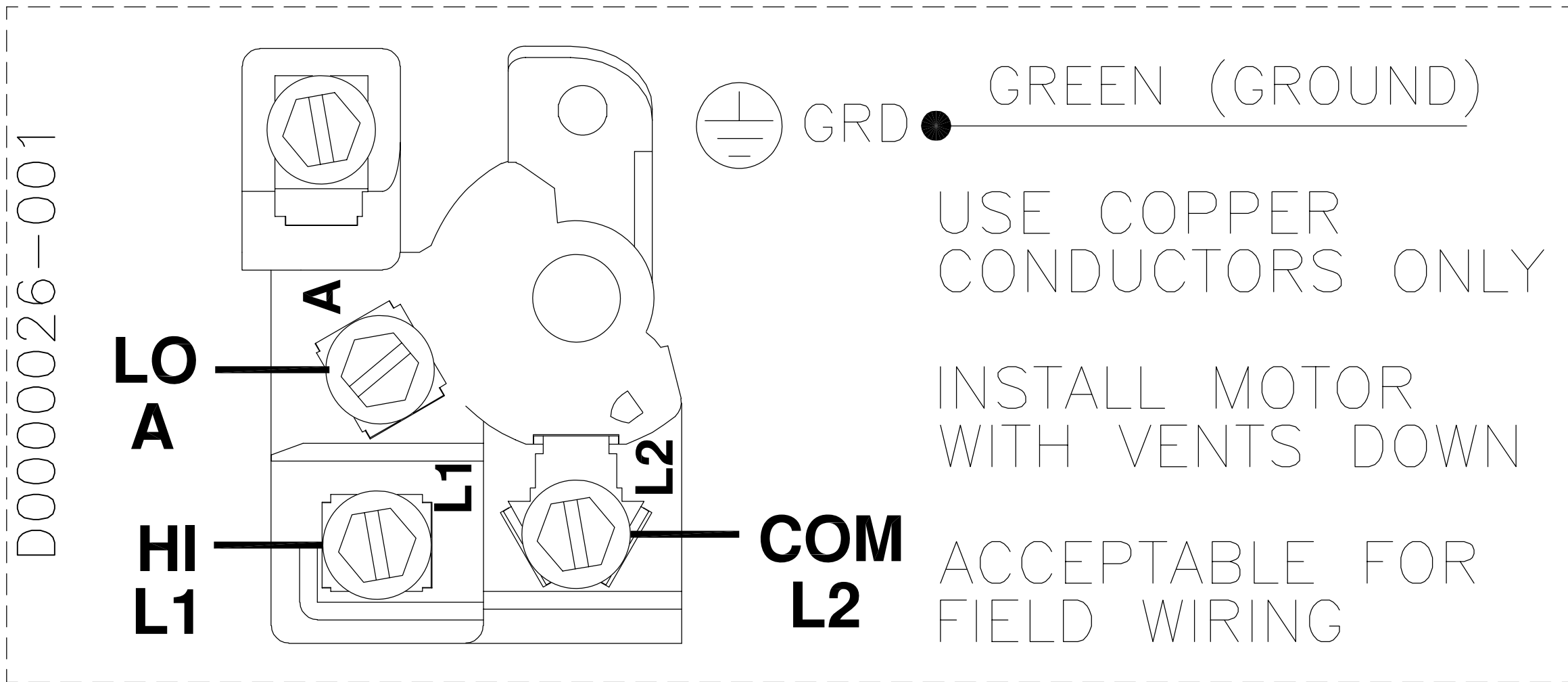
REV	ECO	REV BY	DATE	APPD	DATE
J	ECR-0216539	D.SURYAWANSHI	03/29/2022		



NAMEPLATE DATA	EXTERNAL CONNECTION DIAGRAM	NOTES
MODEL: F56AA74A01 CUST PN: B2975 HP: 1.0/.12 SF: 1.40 ROT: CW RPM: 3450/1725 TYPE: CXCP CODE: H FORM: KJM FRAME: Y56J VOLTS: 230 AMPS: MAX AMPS: SF AMPS: 6.6/1.25 PH: 1 HZ: 60 INS: F AMB: 50°C DUTY: CONT ENCLOSURE: ODP THERMALLY PROTECTED	<p>USE COPPER CONDUCTORS ONLY. INSTALL MOTOR WITH VENTS DOWN. ACCEPTABLE FOR FIELD WIRING.</p>	<ol style="list-style-type: none"> FOR THREADED SHAFT EXTENSION ECCENTRICITY OF THREADED PORTION OF SHAFT IS HELD WITHIN .004 [.10] TOTAL GAGE READING WITH THE INDICATOR ON O.D. OF GROUND RING GAGE AS SHOWN. THE GAGE BEING STATIONARY WITH RESPECT TO THE ROTOR. END PLAY NOT TO EXCEED .010 [.25] MEASURED WITH NO THRUST. ALL DIMENSIONS SHOWN IN PARENTHESIS ARE REFERENCE DIMENSIONS. FINISH PAINT TO BE BLACK. 1.40 SF HP

<table border="1"> <tr> <th>PERFORMANCE CURVE</th> <th>APPROVED SAMPLE</th> </tr> <tr> <td>0116753</td> <td>CSR-0001593</td> </tr> <tr> <th>UL COMPONENT</th> <th>CSA</th> </tr> <tr> <td>FILE# CCN# FILE# GUIDE#</td> <td></td> </tr> <tr> <td>E44549 PRGY2 LR4642 4211-01</td> <td></td> </tr> </table>	PERFORMANCE CURVE	APPROVED SAMPLE	0116753	CSR-0001593	UL COMPONENT	CSA	FILE# CCN# FILE# GUIDE#		E44549 PRGY2 LR4642 4211-01		GEOMETRIC CHARACTERISTICS & SYMBOLS ▭ FLATNESS — STRAIGHTNESS ∠ ANGULARITY ⊥ PERPENDICULARITY (SQUARENESS) // PARALLELISM ○ ROUNDNESS (CIRCULARITY) ∅ CYLINDRICITY ∩ PROFILE OF ANY SURFACE ∩ PROFILE OF ANY LINE ∩ RUNOUT ⊕ TRUE POSITION ⊙ CONCENTRICITY = SYMMETRY ASME Y14.5M 1994	UNLESS OTHERWISE SPECIFIED DIM. TOLERANCES ARE AS FOLLOWS: INCH ±.1 ±.02 ±.005 ±.0005 mm ±0.5 ±0.13 ±0.013 ANG. ±.50 DEG REMOVE BURRS & BREAK SHARP EDGES: INCH .003-.015 mm 0.1-0.4 CORNER FILLETS TO: INCH .020 mm 0.5 MACHINE SURFACES: INCH 125 mm 3.2 METRIC DIMS. SHOWN IN [BRACKETS]	DR BY: YL APPD: MY THIRD ANGLE PROJECTION CONFIDENTIAL: THIS DRAWING AND ITS INFORMATION ARE THE EXCLUSIVE AND CONFIDENTIAL PROPERTY OF REGAL-BELOIT CORPORATION AND ARE NOT TO BE DISCLOSED, DUPLICATED, DISTRIBUTED OR OTHERWISE USED WITHOUT THE WRITTEN CONSENT OF REGAL-BELOIT CORPORATION. -ALL RIGHTS RESERVED.	05-19-2011 05-19-2011 EDS DATE 11-11-2011 FORMAT REV H	REGAL REGAL-BELOIT CORPORATION DESCRIPTION: MODEL-PFHP-56FR OUTLINE SIZE C DWG NO B2975 SCALE NONE SHEET 1
PERFORMANCE CURVE	APPROVED SAMPLE														
0116753	CSR-0001593														
UL COMPONENT	CSA														
FILE# CCN# FILE# GUIDE#															
E44549 PRGY2 LR4642 4211-01															

REV	ECO	REV BY	DATE	APPD	DATE
D	0013035	VMS	03-18-2010	JOSUE	03-18-2010



(TWO SPEED)

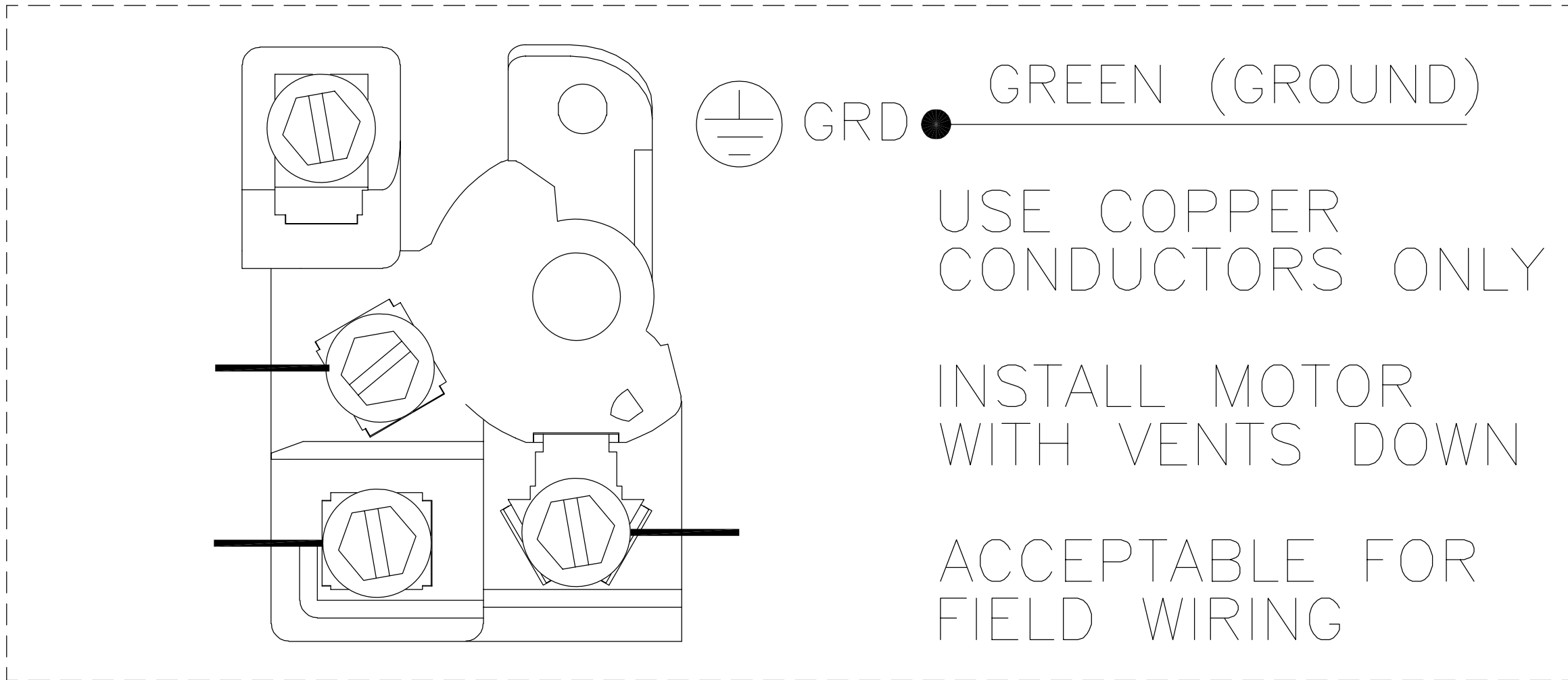
GEOMETRIC CHARACTERISTICS & SYMBOLS
 ▭ FLATNESS
 — STRAIGHTNESS
 < ANGLARITY
 ⊥ PERPENDICULARITY (SQUARENESS)
 // PARALLELISM
 ○ ROUNDNESS (CIRCULARITY)
 ∅ CYLINDRICITY
 △ PROFILE OF ANY SURFACE
 ∩ PROFILE OF ANY LINE
 ↑ RUNOUT
 ⊕ TRUE POSITION
 ◎ CONCENTRICITY
 = SYMMETRY

UNLESS OTHERWISE SPECIFIED
 DIM. TOLERANCES ARE AS FOLLOWS:
 INCH $\pm .1$ $\pm .02$ $\pm .005$ $\pm .0005$
 mm ± 0.5 ± 0.13 ± 0.013
 ANG. $\pm .50$ DEG
 REMOVE BURRS & BREAK SHARP EDGES:
 INCH .003-.015 mm 0.1-0.4
 CORNER FILLETS TO:
 INCH .020 mm 0.5
 MACHINE SURFACES:
 INCH 125 mm 3.2
 METRIC DIMS. SHOWN IN [BRACKETS]

DR BY: Josue 07-15-2008
 APPD: M. OVERHOLSER 07-15-2008
 THIRD ANGLE PROJECTION EDS DATE 02-22-2008
 FORMAT REV F
 CONFIDENTIAL: THIS DRAWING AND ITS INFORMATION ARE THE EXCLUSIVE AND CONFIDENTIAL PROPERTY OF A.O. SMITH CORP. AND ARE NOT TO BE DISCLOSED, DUPLICATED, DISTRIBUTED OR OTHERWISE USED WITHOUT THE WRITTEN CONSENT OF A.O. SMITH CORP.
 -ALL RIGHTS RESERVED. ASME Y14.5M 1994

AC Smith Innovation has a name.		ELECTRICAL PRODUCTS COMPANY A DIVISION OF A. O. SMITH CORPORATION	
DESCRIPTION CONN DIAGRAM - NAMEPLATE			
SIZE A	DWG NO D0000026-001		SHEET 1
SCALE NONE			

REVISION:	ECO	REVISADO POR:	FECHA:	APROBADO POR:	FECHA:
D	0013035	VMS	03-18-2010	JOSUE	03-18-2010



(DOS VELOCIDADES)

CARACTERISTICAS DE GEOMETRIA Y SIMBOLOS

- ▭ PLANICIDAD
- RECTITUD
- ∠ ANGULARIDAD
- ⊥ PERPENDICULARIDAD (A ESCUADRA)
- // PARALELISMO
- REDONDEZ (CIRCULARIDAD)
- ⊘ CILINDRICIDAD
- △ PERFIL DE CUALQUIER SUPERFICIE
- ∩ PERFIL DE CUALQUIER LINEA
- ↑ VARIACION
- ⊕ POSICION REAL
- ◎ CONCENTRICIDAD
- ≡ SIMETRIA

A MENOS QUE SE ESPECIFIQUE DE OTRA MANERA, LAS TOLERANCIAS DE LAS DIMS; SON LAS SIGUIENTES:

	X	XX	XXX	XXXX
PULG	±.1	±.02	±.005	±.0005
mm	±0.5	±0.13	±0.013	

ANG. ±.50 GRADOS
 ELIMINAR REBABAS Y ORILLAS FILOSAS DEL BORDE.
 PULG .003-.015 mm 0.1-0.4
 FILETEAR ESQUINA: PULG .020 mm 0.5
 MAQUINAR SUPERFICIES
 PULG 125 mm 3.2

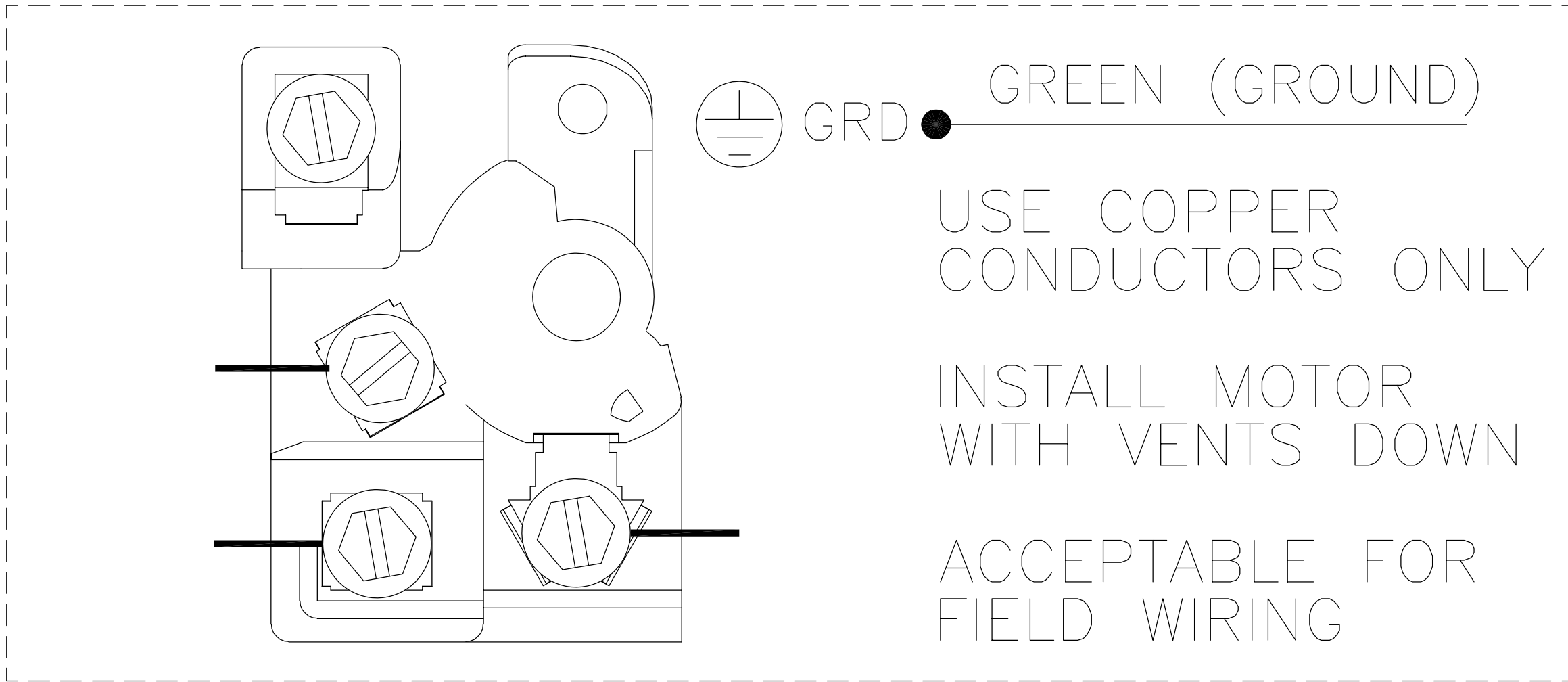
DIMS METRICAS MOSTRADAS [PARENTESIS]

DIBUJADO POR: Josue	07-15-2008
APROBADO POR: M. OVERHOLSER	07-15-2008
TERCER ANGULO DE PROYECCION	
FECHA EDS: 02-22-2008	REV. FORMATO: F

CONFIDENCIAL: ESTE DIBUJO Y SU INFORMACION SON PROPIEDAD DE USO EXCLUSIVO Y CONFIDENCIAL DE A.O.SMITH CORP. Y NO DEBERAN SER REVELADOS, DUPLICADOS, DISTRIBUIDOS O USARSE DE OTRA MANERA SIN EL CONSENTIMIENTO ESCRITO DE A.O. SMITH CORP.
 -TODOS LOS DERECHOS RESERVADOS.ASME Y14.5M 1994

		ELECTRICAL PRODUCTS COMPANY <small>A DIVISION OF A. O. SMITH CORPORATION</small>
DESCRIPCION: CONN DIAGRAM - NAMEPLATE		
TAMAÑO: A	NUMERO DE DIBUJO: D0000026-001	
ESCALA:NONE	HOJA: 1	

版本	ECO	编制	日期	批准	日期
D	0013035	VMS	03-18-2010	JOSUE	03-18-2010



形位公差
□ 平面度
— 直线度
∠ 倾斜度
⊥ 垂直度
// 平行度
○ 圆度
⊘ 圆柱度
△ 面轮廓度
⌒ 线轮廓度
↗ 圆跳动
⊕ 位置度
◎ 同轴度
≡ 对称度

除另有注明
尺寸公差如下:

	X	XX	XXX	XXXX
英寸	±.1	±.02	±.005	±.0005
毫米	±0.5	±0.13	±0.013	

角度 ±.50 度
清理毛刺和尖棱
英寸 .003-.015 毫米 0.1-0.4
内圆角
英寸 .020 毫米 0.5
表面粗糙度
英制 125 米制 3.2
米制尺寸显示在 []

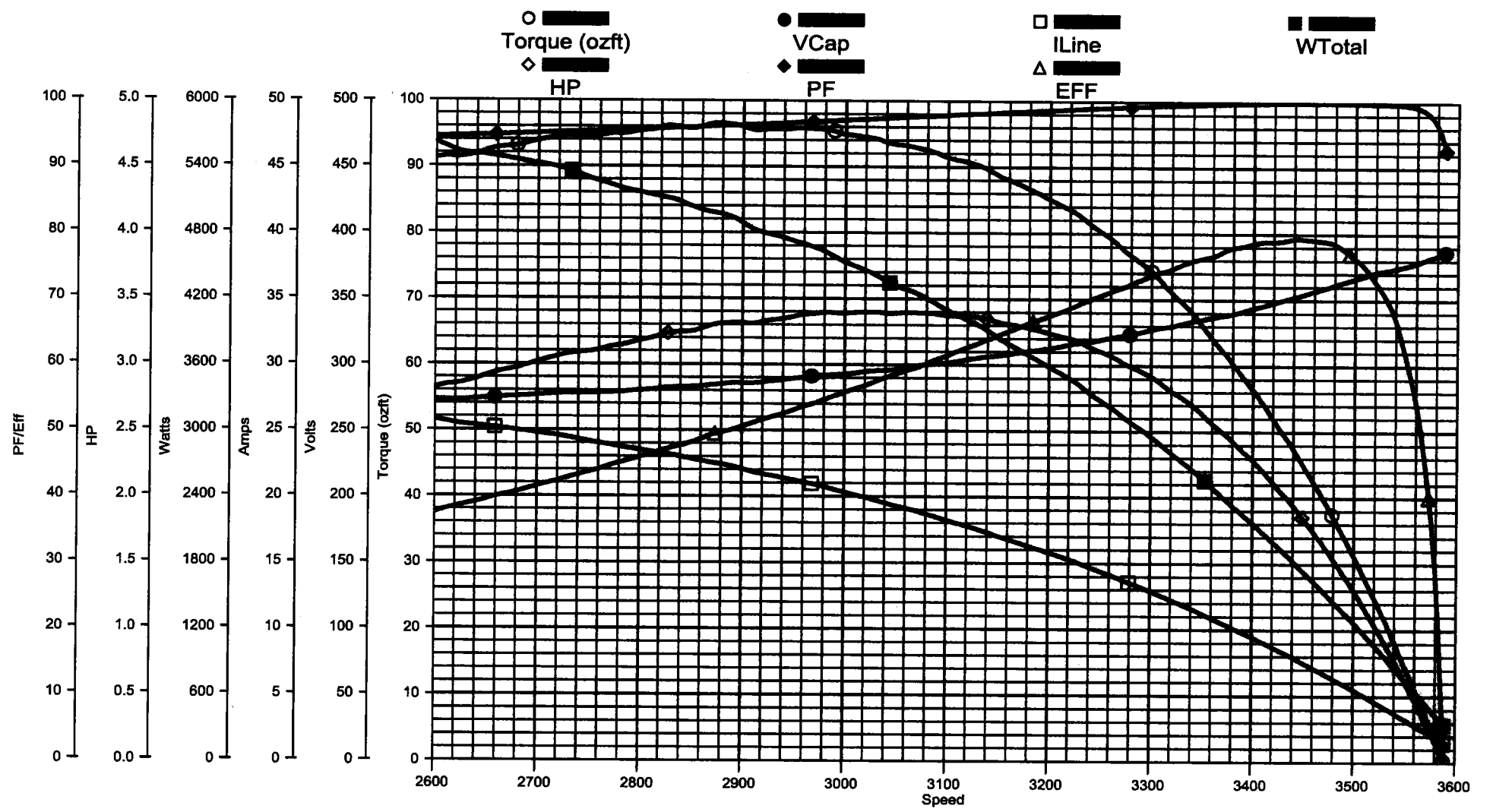
绘图:	Josue	07-15-2008
批准:	M. OVERHOLSER	07-15-2008
第三角投影		图纸格式发布日期 02-22-2008 图纸格式版本 F
机密: 本图纸及相关信息所有权归A. O. SMITH公司所有。 未经A. O. SMITH公司书面授权, 不得泄露、复制、传播或作 其他用途。—版权所有		
ASME Y14.5M 1994		

		ELECTRICAL PRODUCTS COMPANY <small>A DIVISION OF A. O. SMITH CORPORATION</small>	
名称		CONN DIAGRAM - NAMEPLATE	
图幅	A	图号	D0000026-001
比例	NONE	页号	1

AO Smith

Performance Test Project: 0801562 (High Speed)

Monday, September 22, 2008 05:57 AM



TRACKING #: 10068091
 SBU: Pump
 ENGINEER: DWAYNE FOX
 TECHNICIAN: DAN THOMPSON
 BENCH: 2
 TORQUE CELL: 500-1 inlb
 NP RPM: 3450
 # SPEEDS: 2
 MOTOR #: 1
 TYPE: CXCP

CUSTOMER: DISTRIBUTION SERVICES
 MODEL: 0801562A
 FRAME: 56
 PHASES: 1
 HP: 1.00
 VOLTS: 230.0
 HERTZ: 60
 START CAP: 189.00
 RUN CAP: 30.00
 COMMENT3:

DESCRIPTION: OFFSET
 BDT: 95.83
 MT: 96.56
 SF: 0.00
 LRT: 0.00
 LRA: 0.00
 PUT: 0.00
 COMMENT1:
 COMMENT2:
 COMMENT4: