

PRODUCT INFORMATION PACKET



Model No: B2980
Catalog No: B2980
Pool Pump Motor, .75/.10 HP, 1 Ph, 60 Hz, 230 V, 3600 RPM, R56Y Frame, DP



Regal and Century are trademarks of Regal Rexnord Corporation or one of its affiliated companies.
©2024 Regal Rexnord Corporation, All Rights Reserved. MC017097E





Nameplate Specifications

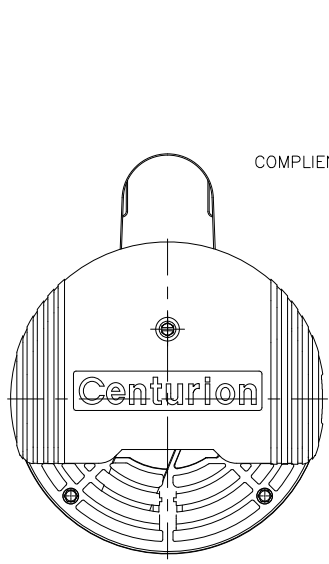
Phase	1	Output HP	.75/.10 Hp
Output KW	0.56 kW	Voltage	230 V
Speed	3450/1725 rpm	Service Factor	1.67
Frame	R56Y	Enclosure	Drip Proof
Thermal Protection	Thermally Protected	Ambient Temperature	50 °C
Frequency	60 Hz	Current	SF 5.8/0.9 A
Duty	Continuous	Insulation Class	F
UL	Recognized	CSA	Y

Technical Specifications

Electrical Type	Psc Low Speed, Cap Start/Cap Run High Speed	Poles	2/4
Rotation	Counterclockwise Pump End	Mounting	Square Flange
Motor Orientation	Horizontal	Drive End Bearing	BALL
Opp Drive End Bearing	BALL	Frame Material	Rolled Steel
Shaft Type	1/2 THREADS	Overall Length	13.10 in
Frame Length	8.75 in	Shaft Diameter	0.625 in
Shaft Extension	0.91 in		
Outline Drawing	B2980-S01	Connection Drawing	D0000026-001

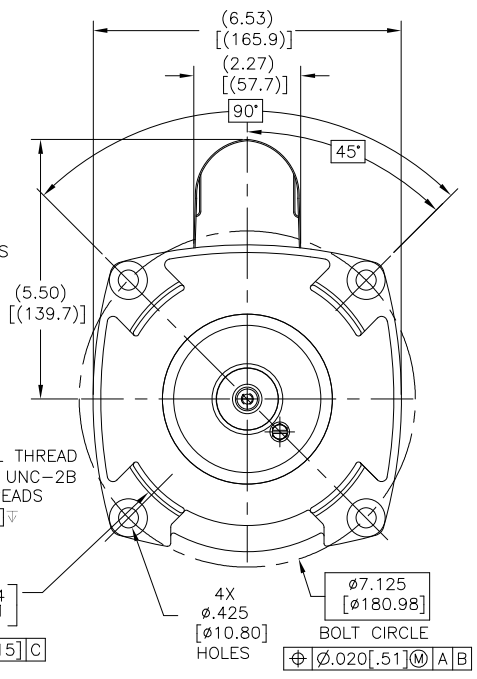
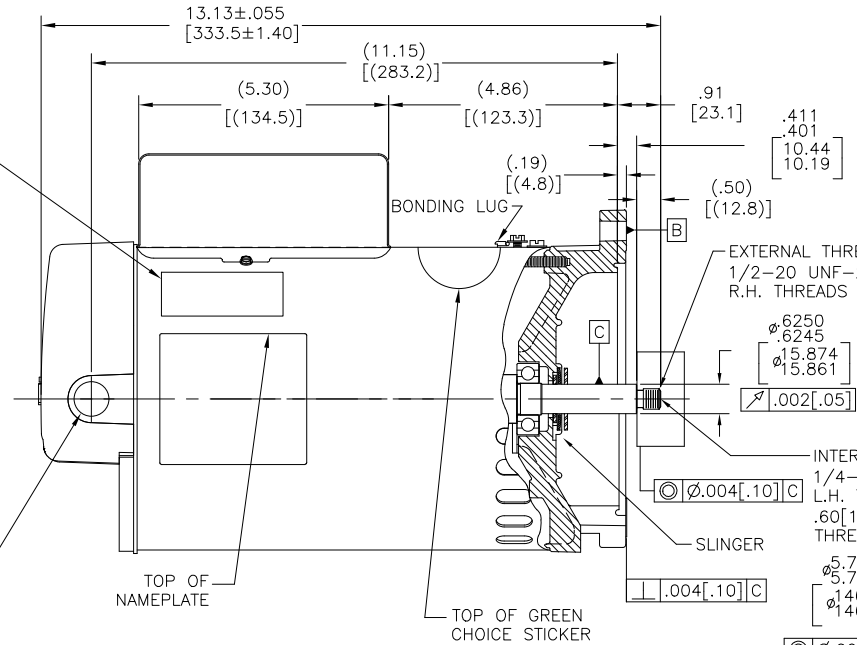
This is an uncontrolled document once printed or downloaded and is subject to change without notice. Date Created:05/28/2024

REV	ECO	REV BY	DATE	APPD	DATE
P	ECR-0234248	S JIMENEZ	5-22-2024	S JIMENEZ	5-22-2024

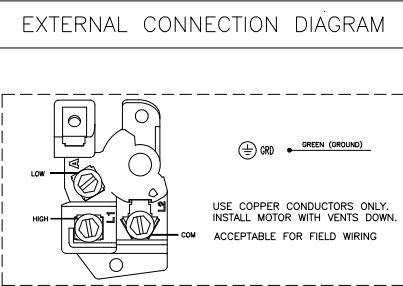


COMPLIANCE LABEL

1/2-14 N.P.T. WITH CAP



NAMEPLATE DATA	
MODEL: 196442	CUST. PN: B2980
HP: .75/.10	SF: 1.65
ROT: CCWPE	
RPM: 3450/1725	
TYPE: CXCP	CODE: K
FORM:	FRAME: R56Y
VOLTS: 230	
AMPS:	
MAX AMPS:	
SF AMPS: 5.8/0.9	
PH: 1	HZ: 60
INS: F	AMB: 50°C
DUTY: CONT	
ENCLOSURE: ODP	
THERMALLY PROTECTED	



- NOTES
- FOR THREADED SHAFT EXT. ECCENTRICITY OF THREADED PORTION OF SHAFT IS HELD WITHIN .004[.10] TOTAL GAGE READING WITH THE INDICATOR ON O.D. OF GROUND RING GAGE AS SHOWN. THE GAGE BEING STATIONARY WITH RESPECT TO THE ROTOR.
 - END PLAY NOT TO EXCEED .010[.25] MEASURED WITH NO THRUST.
 - ALL DIMENSIONS SHOWN IN PARENTHESIS ARE REFERENCE DIMENSIONS.
 - FINISH PAINT TO BE BLACK.
 - 1.24 SF HP

PERFORMANCE CURVE	APPROVED SAMPLE
0116750	
UL COMPONENT	CSA
FILE#	CCN#
E44549	PRGY2
	FILE#
	LR4642
	GUIDE#
	4211-01
CUSTOMER	DISTRIBUTION

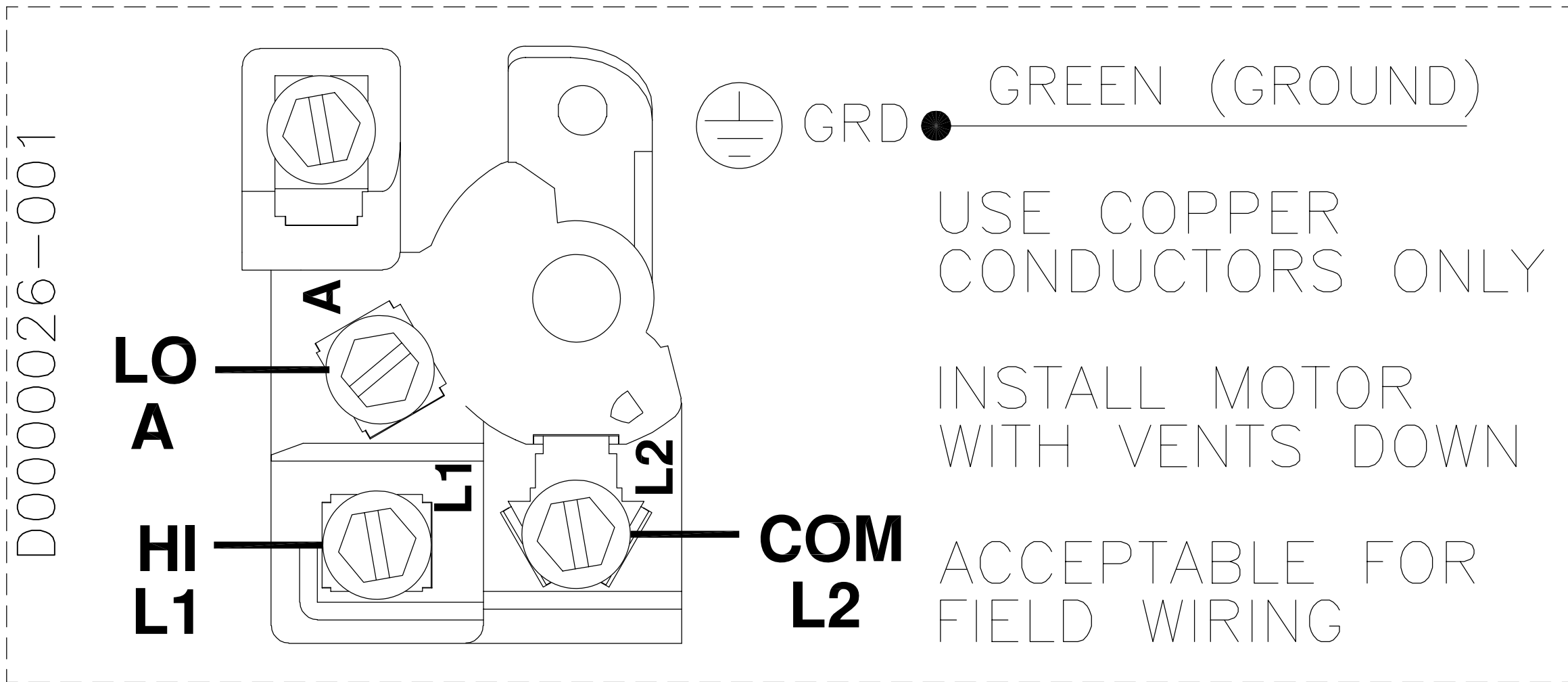
GEOMETRIC CHARACTERISTICS & SYMBOLS
 / FLATNESS
 - STRAIGHTNESS
 < ANGLARITY
 ⊥ PERPENDICULARITY (SQUARENESS)
 // PARALLELISM
 ○ ROUNDNESS (CIRCULARITY)
 ⌀ CYLINDRICITY
 ▭ PROFILE OF ANY SURFACE
 ~ PROFILE OF ANY LINE
 ↑ RUNOUT
 ⊕ TRUE POSITION
 ⊙ CONCENTRICITY
 = SYMMETRY
 ASME Y14.5M 1994

UNLESS OTHERWISE SPECIFIED DIM. TOLERANCES ARE AS FOLLOWS:
 INCH X XX XXX XXXX
 INCH ±.1 ±.02 ±.005 ±.0005
 mm ±0.5 ±0.13 ±0.013
 ANG. ±50 DEG
 REMOVE BURRS & BREAK SHARP EDGES:
 INCH .003-.015 mm 0.1-0.4
 CORNER FILLETS TO:
 INCH .020 mm 0.5
 MACHINE SURFACES:
 INCH 125 mm 3.2
 METRIC DIMS. SHOWN IN [BRACKETS]

DR BY:	L.GRADO	07-19-2008
APPD:	M.OVERHOLSER	07-19-2008
THIRD ANGLE PROJECTION	EDS DATE 11-11-2011	FORMAT REV H
CONFIDENTIAL: THIS DRAWING AND ITS INFORMATION ARE THE EXCLUSIVE AND CONFIDENTIAL PROPERTY OF REGAL-BELOIT CORPORATION AND ARE NOT TO BE DISCLOSED, DUPLICATED, DISTRIBUTED OR OTHERWISE USED WITHOUT THE WRITTEN CONSENT OF REGAL-BELOIT CORPORATION. -ALL RIGHTS RESERVED.		

REGAL-BELOIT CORPORATION	
DESCRIPTION	
MODEL-PFHP-56FR OUTLINE	
SIZE	DWG NO
C	B2980
SCALE	SHEET
NONE	1

REV	ECO	REV BY	DATE	APPD	DATE
D	0013035	VMS	03-18-2010	JOSUE	03-18-2010



(TWO SPEED)

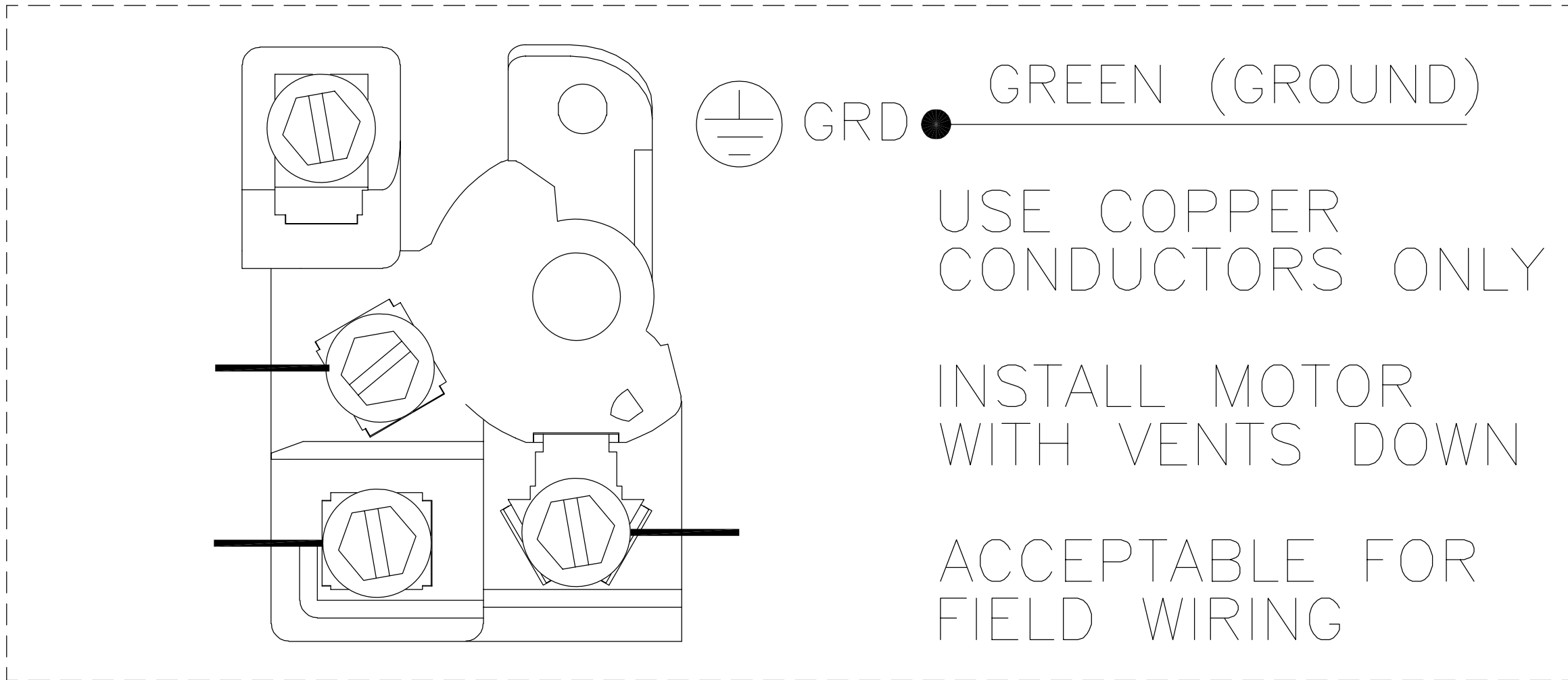
GEOMETRIC CHARACTERISTICS & SYMBOLS
 ▭ FLATNESS
 — STRAIGHTNESS
 < ANGULARITY
 ⊥ PERPENDICULARITY (SQUARENESS)
 // PARALLELISM
 ○ ROUNDNESS (CIRCULARITY)
 ∅ CYLINDRICITY
 △ PROFILE OF ANY SURFACE
 ∩ PROFILE OF ANY LINE
 ↑ RUNOUT
 ⊕ TRUE POSITION
 ◎ CONCENTRICITY
 = SYMMETRY

UNLESS OTHERWISE SPECIFIED
 DIM. TOLERANCES ARE AS FOLLOWS:
 INCH $\pm .1$ $\pm .02$ $\pm .005$ $\pm .0005$
 mm ± 0.5 ± 0.13 ± 0.013
 ANG. $\pm .50$ DEG
 REMOVE BURRS & BREAK SHARP EDGES:
 INCH .003-.015 mm 0.1-0.4
 CORNER FILLETS TO:
 INCH .020 mm 0.5
 MACHINE SURFACES:
 INCH 125 mm 3.2
 METRIC DIMS. SHOWN IN [BRACKETS]

DR BY: Josue 07-15-2008
 APPD: M. OVERHOLSER 07-15-2008
 THIRD ANGLE PROJECTION
 EDS DATE 02-22-2008
 FORMAT REV F
 CONFIDENTIAL: THIS DRAWING AND ITS INFORMATION ARE THE EXCLUSIVE AND CONFIDENTIAL PROPERTY OF A.O. SMITH CORP. AND ARE NOT TO BE DISCLOSED, DUPLICATED, DISTRIBUTED OR OTHERWISE USED WITHOUT THE WRITTEN CONSENT OF A.O. SMITH CORP.
 -ALL RIGHTS RESERVED. ASME Y14.5M 1994

		ELECTRICAL PRODUCTS COMPANY <small>A DIVISION OF A. O. SMITH CORPORATION</small>	
DESCRIPTION			
CONN DIAGRAM - NAMEPLATE			
SIZE	A	DWG NO	D0000026-001
SCALE	NONE	SHEET	1

REVISION:	ECO	REVISADO POR:	FECHA:	APROBADO POR:	FECHA:
D	0013035	VMS	03-18-2010	JOSUE	03-18-2010



(DOS VELOCIDADES)

CARACTERISTICAS DE GEOMETRIA Y SIMBOLOS
 ▽ PLANICIDAD
 — RECTITUD
 < ANGULARIDAD
 ⊥ PERPENDICULARIDAD (A ESCUADRA)
 // PARALELISMO
 ○ REDONDEZ (CIRCULARIDAD)
 ⌀ CILINDRICIDAD
 △ PERFIL DE CUALQUIER SUPERFICIE
 ∩ PERFIL DE CUALQUIER LINEA
 ↑ VARIACION
 ⊕ POSICION REAL
 ⊙ CONCENTRICIDAD
 = SIMETRIA

A MENOS QUE SE ESPECIFIQUE DE OTRA MANERA, LAS TOLERANCIAS DE LAS DIMS; SON LAS SIGUIENTES:
 X XX XXX XXXX
 PULG ±.1 ±.02 ±.005 ±.0005
 mm ±0.5 ±0.13 ±0.013
 ANG. ±.50 GRADOS
 ELIMINAR REBABAS Y ORILLAS FILOSAS DEL BORDE.
 PULG .003-.015 mm 0.1-0.4
 FILETEAR ESQUINA: PULG .020 mm 0.5
 MAQUINAR SUPERFICIES
 PULG 125 mm 3.2
 DIMS METRICAS MOSTRADAS [PARENTESIS]

DIBUJADO POR: Josue 07-15-2008
 APROBADO POR: M. OVERHOLSER 07-15-2008
 TERCER ANGULO DE PROYECCION
 FECHA EDS: 02-22-2008
 REV. FORMATO: F
 CONFIDENCIAL: ESTE DIBUJO Y SU INFORMACION SON PROPIEDAD DE USO EXCLUSIVO Y CONFIDENCIAL DE A.O.SMITH CORP. Y NO DEBERAN SER REVELADOS, DUPLICADOS, DISTRIBUIDOS O USARSE DE OTRA MANERA SIN EL CONSENTIMIENTO ESCRITO DE A.O. SMITH CORP.
 -TODOS LOS DERECHOS RESERVADOS.ASME Y14.5M 1994

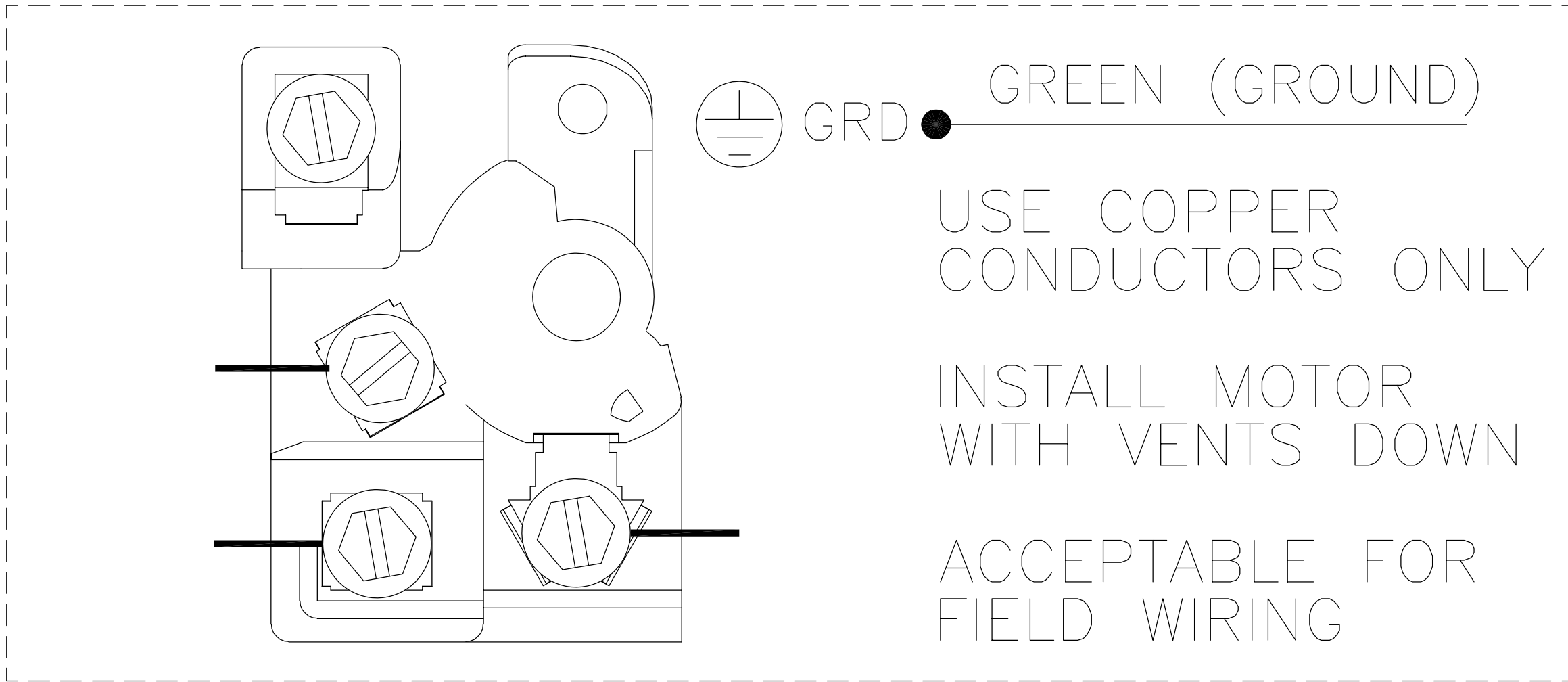
ACSmith **ELECTRICAL PRODUCTS COMPANY**
 innovation has a name. A DIVISION OF A. O. SMITH CORPORATION

DESCRIPCION: CONN DIAGRAM - NAMEPLATE

TAMAÑO: A NUMERO DE DIBUJO: D0000026-001

ESCALA: NONE HOJA: 1

版本	ECO	编制	日期	批准	日期
D	0013035	VMS	03-18-2010	JOSUE	03-18-2010



- 形位公差
- 平面度
- 直线度
- ∠ 倾斜度
- ⊥ 垂直度
- // 平行度
- 圆度
- ⊘ 圆柱度
- △ 面轮廓度
- ⌒ 线轮廓度
- ↗ 圆跳动
- ⊕ 位置度
- ◎ 同轴度
- ≡ 对称度

除另有注明
尺寸公差如下:

	X	XX	XXX	XXXX
英寸	±.1	±.02	±.005	±.0005
毫米	±0.5	±0.13	±0.013	
角度	±.50 度			
清理毛刺和尖棱				
英寸	.003-.015		毫米 0.1-0.4	
内圆角				
英寸	.020		毫米 0.5	
表面粗糙度				
英制	125		米制 3.2	

米制尺寸显示在 []

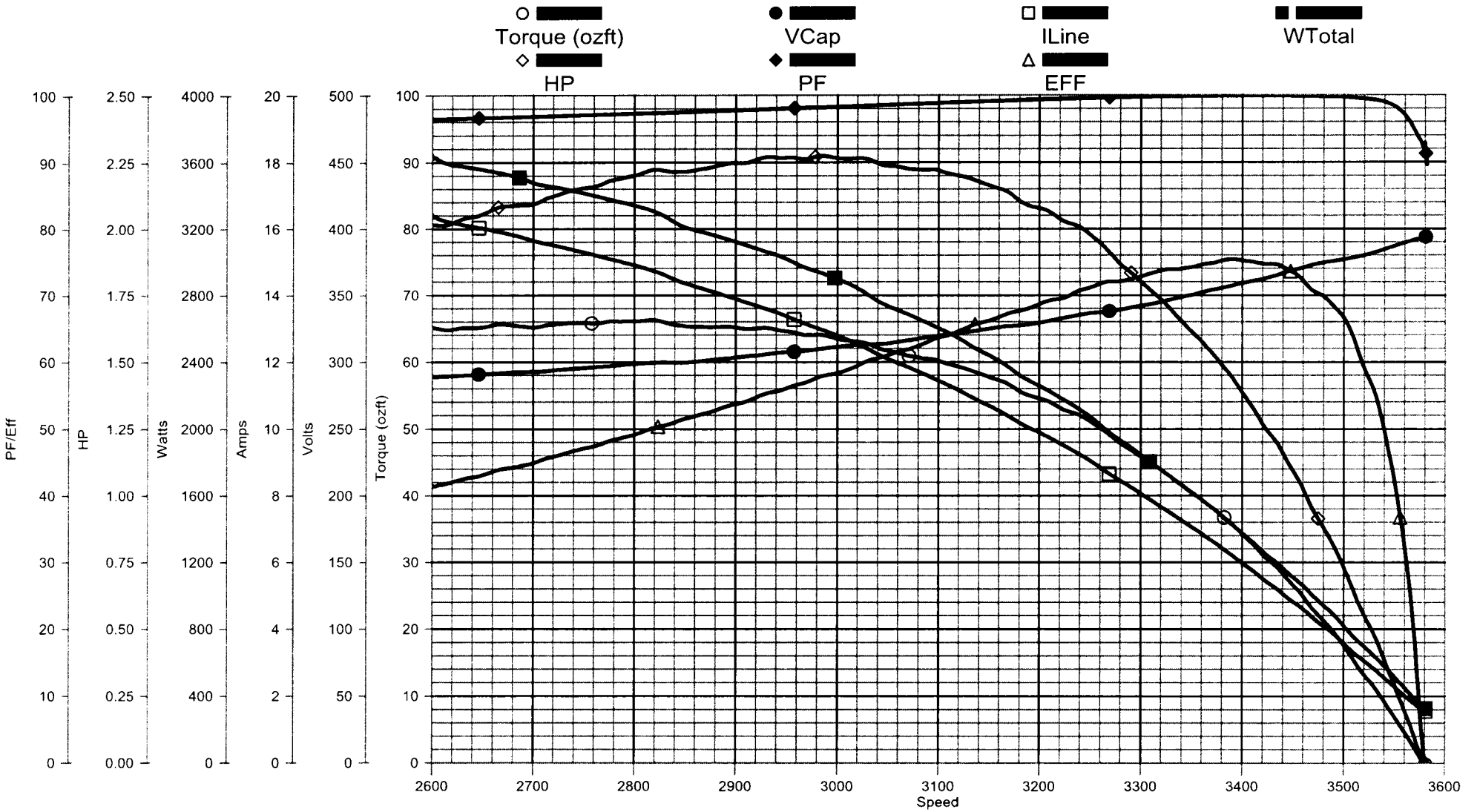
绘图:	Josue	07-15-2008
批准:	M. OVERHOLSER	07-15-2008
第三角投影		图纸格式发布日期 02-22-2008 图纸格式版本 F
机密: 本图纸及相关信息所有权归A. O. SMITH公司所有。 未经A. O. SMITH公司书面授权, 不得泄露、复制、传播或作 其他用途。—版权所有		
ASME Y14.5M 1994		

		ELECTRICAL PRODUCTS COMPANY <small>A DIVISION OF A. O. SMITH CORPORATION</small>	
名称		CONN DIAGRAM - NAMEPLATE	
图幅	A	图号	D0000026-001
比例	NONE	页号	1

AO Smith

Performance Test Project: 0801561 (High Speed)

Wednesday, August 20, 2008 01:00 AM



TRACKING #: 10068075
 SBU: Pump
 ENGINEER: DWAYNE FOX
 TECHNICIAN: DAN THOMPSON
 BENCH: 2
 TORQUE CELL: 500-1 inlb
 NP RPM: 3450
 # SPEEDS: 2
 MOTOR #: 1
 TYPE: CXCP

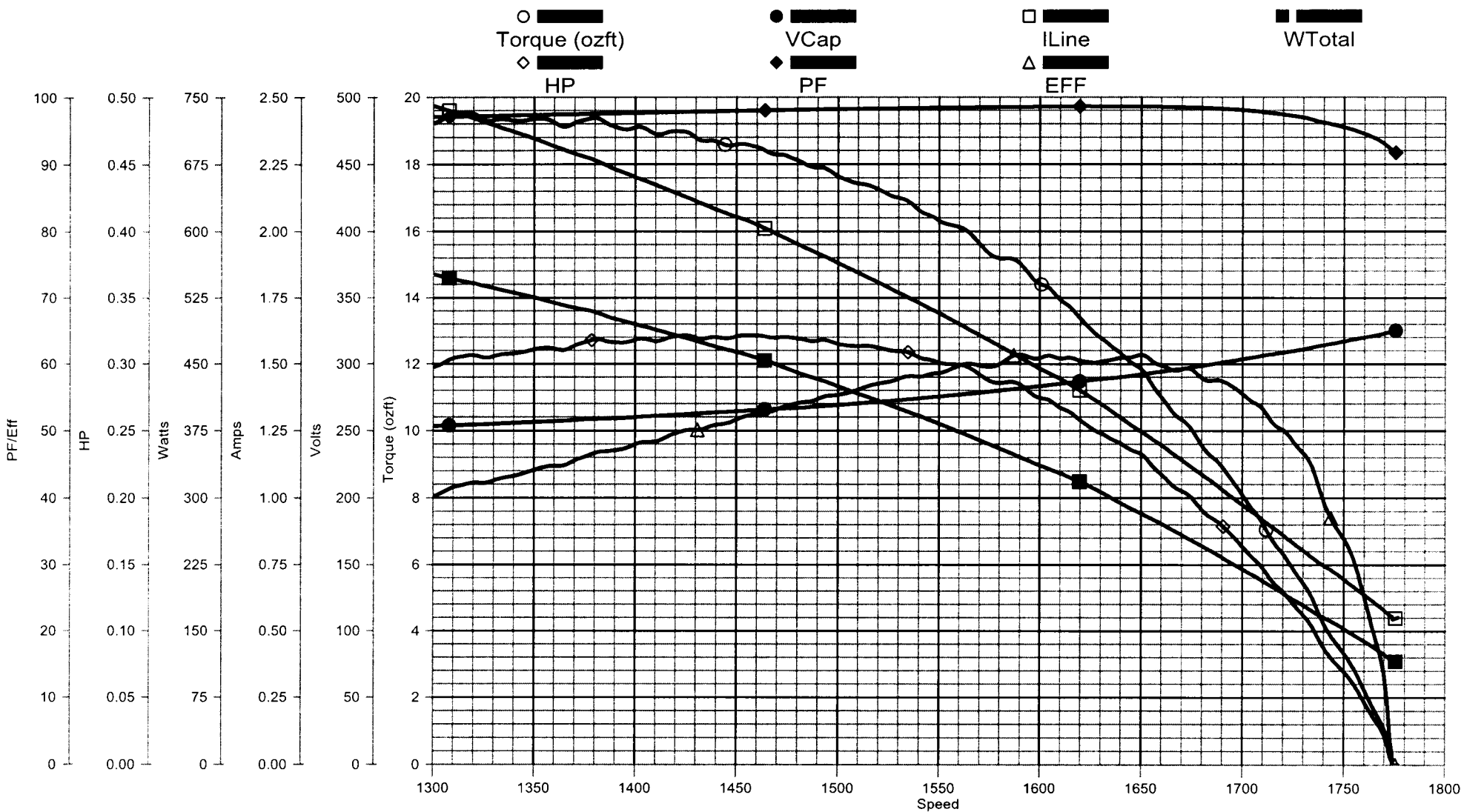
CUSTOMER: DISTRIBUTION
 MODEL: 0801561A
 FRAME: 56
 PHASES: 1
 HP: 0.75
 VOLTS: 230.0
 HERTZ: 60
 START CAP: 189.00
 RUN CAP: 25.00
 COMMENT3:

DESCRIPTION: OFFSET
 BDT: 65.26
 MT: 66.27
 SF: 49.50
 LRT: 0.00
 LRA: 0.00
 PUT: 0.00
 COMMENT1:
 COMMENT2:
 COMMENT4:

AO Smith

Performance Test Project: 0801561 (Low Speed)

Wednesday, August 20, 2008 01:14 AM



TRACKING #: 10068075
 SBU: Pump
 ENGINEER: DWAYNE FOX
 TECHNICIAN: DAN THOMPSON
 BENCH: 2
 TORQUE CELL: 500-1 inlb
 NP RPM: 1725
 # SPEEDS: 2
 MOTOR #: 1
 TYPE: CXCP

CUSTOMER: DISTRIBUTION
 MODEL: 0801561A
 FRAME: 56
 PHASES: 1
 HP: 0.10
 VOLTS: 230.0
 HERTZ: 60
 START CAP: 189.00
 RUN CAP: 10.00
 COMMENT3:

DESCRIPTION: 1 REV LOCK
 BDT: 19.38
 MT: 19.54
 SF: 12.38
 LRT: 0.00
 LRA: 0.00
 PUT: 0.00
 COMMENT1:
 COMMENT2:
 COMMENT4: