

# PRODUCT INFORMATION PACKET



Model No: B585  
Catalog No: B585

General Purpose Farm Duty Motor, 3/4 HP, 1 Ph, 60 Hz, 208-230 V, 3600 RPM, L56HCZ Frame, TENV



Regal and Century are trademarks of Regal Rexnord Corporation or one of its affiliated companies.  
©2022 Regal Rexnord Corporation, All Rights Reserved. MC017097E





**Nameplate Specifications**

Output HP	<b>3/4 Hp</b>	Output KW	<b>0.56 kW</b>
Frequency	<b>60 Hz</b>	Voltage	<b>208-230 V</b>
Current	<b>4.0-3.8 A</b>	Speed	<b>3450 rpm</b>
Service Factor	<b>1</b>	Phase	<b>1</b>
Duty	<b>Continuous</b>	Insulation Class	<b>B</b>
Frame	<b>L56HCZ</b>	Enclosure	<b>Totally Enclosed Non Ventilated</b>
Thermal Protection	<b>Thermally Protected</b>	Ambient Temperature	<b>40 °C</b>
UL	<b>Recognized</b>	CSA	<b>Y</b>
CE	<b>N</b>	Number of Speeds	<b>1</b>

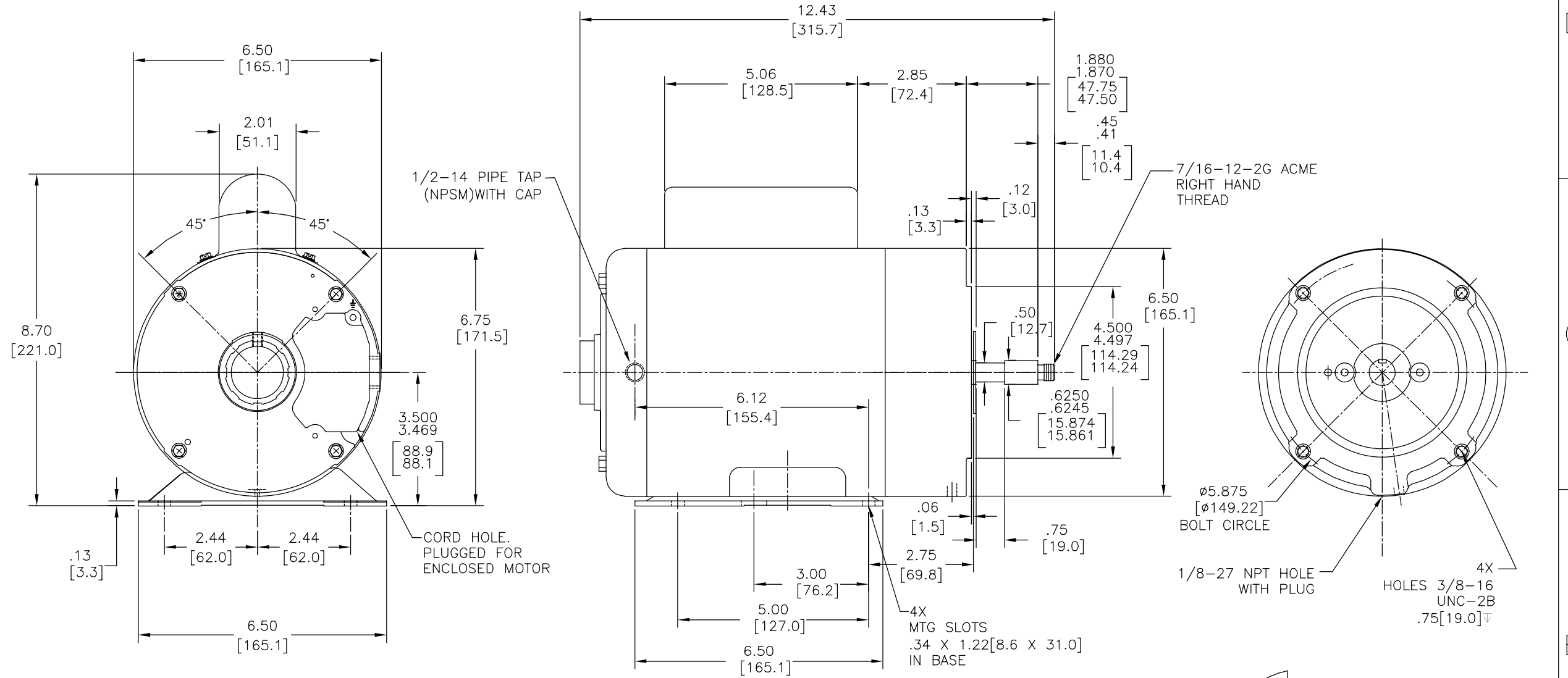
**Technical Specifications**

Electrical Type	<b>Permanent Split Capacitor, Single Or Dual Voltage</b>	Starting Method	<b>Across The Line</b>
Poles	<b>2</b>	Rotation	<b>Clockwise</b>
Mounting	<b>Rigid Base</b>	Drive End Bearing	<b>Ball</b>
Opp Drive End Bearing	<b>Ball</b>	Frame Material	<b>Rolled Steel</b>
Shaft Type	<b>Threaded</b>	Overall Length	<b>12.43 in</b>
Frame Length	<b>6.25 in</b>	Shaft Diameter	<b>0.625 in</b>
Shaft Extension	<b>2.2 in</b>		
Outline Drawing	<b>B585-S01</b>	Connection Drawing	<b>17050323.PCX</b>

This is an uncontrolled document once printed or downloaded and is subject to change without notice. Date Created:11/28/2022

REV	ECO	REV BY	DATE	APPD	DATE
B	0025366	J.M.Ramirez	04-13-2012	R.Rascon	04-13-2012

TYPE: CX  
 FRAME: L56HCZ  
 FORM: K



- NOTES:
1. RABBET DIAMETER IS CONCENTRIC WITH SHAFT  $\pm$  WITHIN  $.004[.10]$  T.I.R.
  2. FACE OF MOUNTING FLANGED IS PERPENDICULAR TO SHAFT  $\pm$   $.004[.10]$  T.I.R.
  3. SHAFT RUNOUT NOT TO EXCEED  $.002[.05]$  T.I.R.
  4. FOR RIGID BASE ONLY: THE 2 BOTTOM HOLES IN THE MOUNTING FLANGE ARE EQUIDISTANT FROM THE BOTTOM OF THE FEET WITHIN  $.030[.8]$
  5. ECCENTRICITY OF TREADED PORTION TO BE HELD WITH  $.004[.10]$  GAUGE READING WITH INDICATOR ON O.D. OF GROUND RING.

AFTER FINAL ASSEMBLY  
 MACHINE NEMA C FACE SO  
 THE DIMENSION FROM THE FACE OF THE  
 CUSTOMER PILOT TO SHAFT SHOULDER  
 IS 1.870/1.880[47.50/47.75]

SHAFT SEAL W/LIP FACING TOWARD  
 OUTSIDE OF MOTOR  
 (BOTH ENDS WHEN REQ'D)

DETAIL "A"

GEOMETRIC CHARACTERISTICS & SYMBOLS

$\square$	FLATNESS
—	STRAIGHTNESS
$\sphericalangle$	ANGULARITY
$\perp$	PERPENDICULARITY (SQUARENESS)
$\parallel$	PARALLELISM
$\bigcirc$	ROUNDNESS (CIRCULARITY)
$\text{---}$	CYLINDRICITY
$\triangle$	PROFILE OF ANY SURFACE
$\nabla$	PROFILE OF ANY LINE
$\uparrow$	RUNOUT
$\oplus$	TRUE POSITION
$\odot$	CONCENTRICITY
$\equiv$	SYMMETRY

ASME Y14.5M 1994

UNLESS OTHERWISE SPECIFIED  
 DIM. TOLERANCES ARE AS FOLLOWS:

INCH	X	XX	XXX	XXXX
	$\pm .1$	$\pm .02$	$\pm .005$	$\pm .0005$
mm	$\pm 0.5$	$\pm 0.13$	$\pm 0.013$	

ANG.  $\pm 50$  DEG  
 REMOVE BURRS & BREAK SHARP EDGES:  
 INCH  $.003-.015$  mm  $0.1-0.4$   
 CORNER FILLETS TO:  
 INCH  $.020$  mm  $0.5$   
 MACHINE SURFACES:  
 INCH  $125$  mm  $3.2$

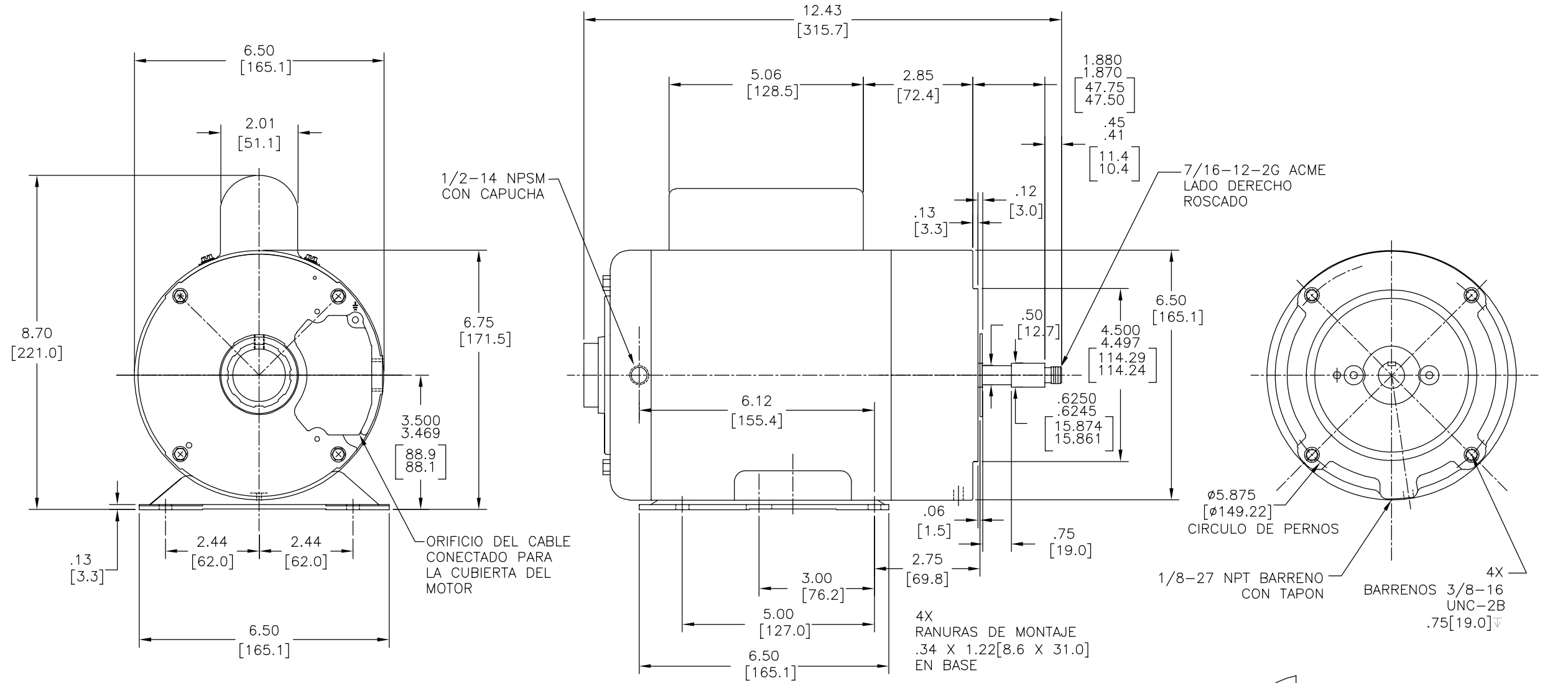
METRIC DIMS. SHOWN IN [BRACKETS]

DR BY:	G.Rodriguez	05-16-2011
APPD:	T.Reyes	05-16-2012
THIRD ANGLE PROJECTION		EDS DATE 11-11-2011 FORMAT REV G
CONFIDENTIAL: THIS DRAWING AND ITS INFORMATION ARE THE EXCLUSIVE AND CONFIDENTIAL PROPERTY OF REGAL-BELOIT CORPORATION AND ARE NOT TO BE DISCLOSED, DUPLICATED, DISTRIBUTED OR OTHERWISE USED WITHOUT THE WRITTEN CONSENT OF REGAL-BELOIT CORPORATION. -ALL RIGHTS RESERVED.		

DESCRIPTION	
MODEL-CFHP-56FR OUTLINE	
SIZE	DWG NO
C	B585
SCALE	SHEET
NONE	1

REVISION:	ECO	REVISADO POR:	FECHA:	APROBADO POR:	FECHA:
B	0025366	J.M.Ramirez	04-13-2012	R.Rascon	04-13-2012

TIPO: CX  
CARCAZA: L56HCZ  
FORM: K

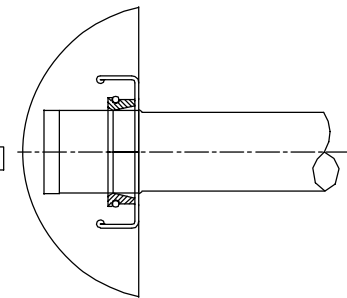


NOTAS:

1. RECESO DEL DIAMETRO ES CONCENTRICO CON LA FLECHA  $\perp$  ENTRE .004[.10] T.I.R.
2. EL BORDE DE LA CARA DEL MONTAJE ES PERPENDICULAR A LA FLECHA  $\perp$  .004[.10] T.I.R.
3. LA OSCILACION DE LA FLECHA NO DEBE EXCEDER .002[.05] T.I.R.
4. SOLO PARA BASE RIGIDA: LOS 2 BARRENOS DEL BORDE INFERIOR DEL MONTAJE SON EQUIDISTANTES DE EL FONDO DEL PIE ENTRE .030[.8]
5. EXCENTRICIDAD DE LA PORSION DE LA ROSCA ESTA SOSTENIDA CON UN INDICADOR .004[.10] LECTURA CON INDICADOR EN DIAMETRO EXTERIOR DE ANILLO A TIERRA.

DESPUES DEL MAQUINADO DEL ENSAMBLE FINAL NEMA C LA DIMENSION DE LA CARA DE EL CLIENTE PILOTO PARA LA HOMBRETA DE LA FLECHA ES 1.870/1.880[47.50/47.75]

SELLO DE LA FLECHA CON CEJA VIENDO HACIA AFUERA DEL MOTOR (AMBOS EXTREMOS CUANDO SEA REQUERIDO)

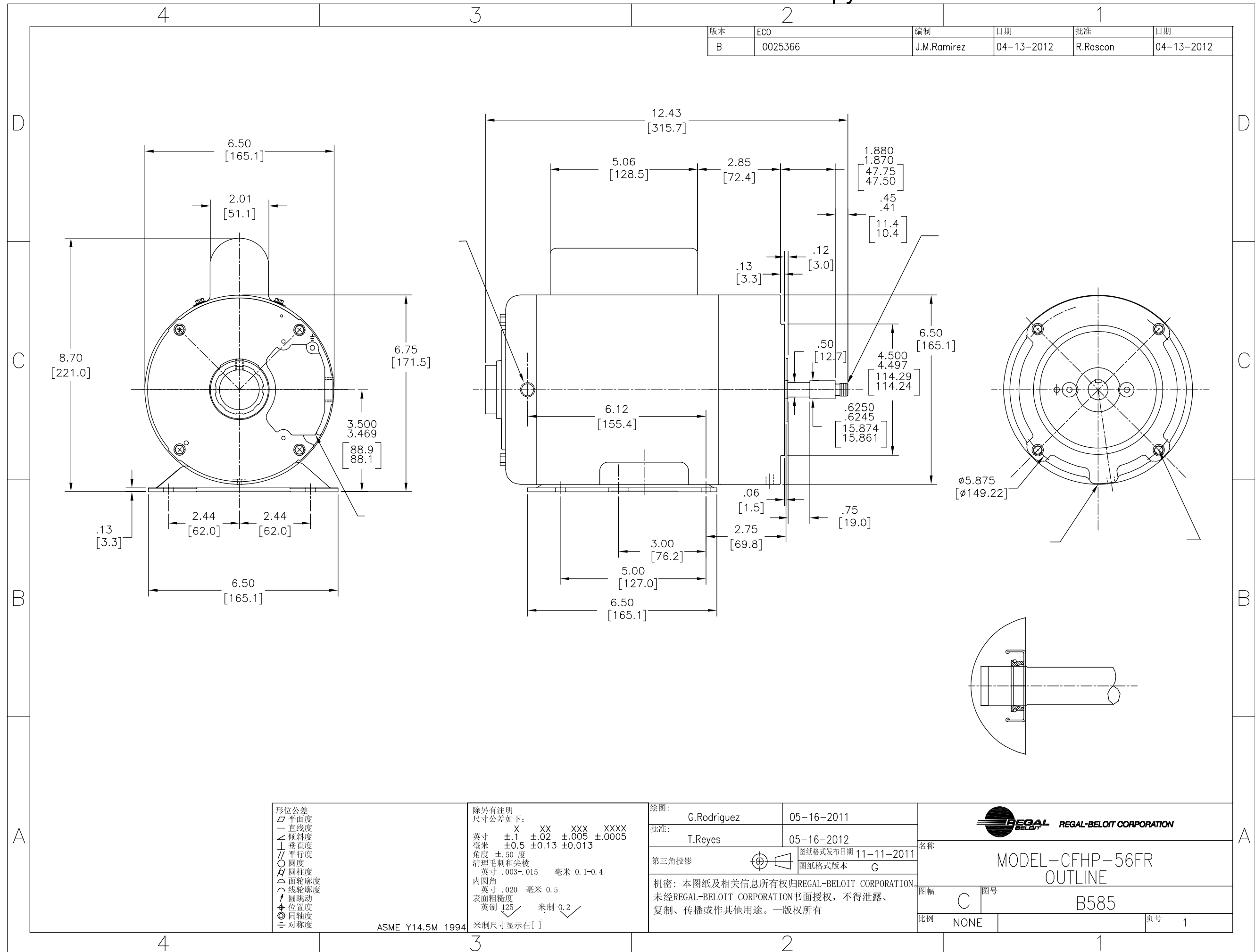


<p>CARACTERISTICAS DE GEOMETRIA Y SIMBOLOS</p> <p>□ PLANICIDAD</p> <p>— RECTITUD</p> <p>∠ ANGULARIDAD</p> <p>⊥ PERPENDICULARIDAD (A ESCUADRA)</p> <p>// PARALELISMO</p> <p>○ REDONDEZ (CIRCULARIDAD)</p> <p>⊘ CILINDRICIDAD</p> <p>△ PERFIL DE CUALQUIER SUPERFICIE</p> <p>∧ PERFIL DE CUALQUIER LINEA</p> <p>∧ VARIACION</p> <p>⊕ POSICION REAL</p> <p>⊙ CONCENTRICIDAD</p> <p>= SIMETRIA</p>	<p>ASME Y14.5M 1994</p>
--	-------------------------

<p>A MENOS QUE SE ESPECIFIQUE DE OTRA MANERA, LAS TOLERANCIAS DE LAS DIMS; SON LAS SIGUIENTES:</p> <p>PULG ±.1 ±.02 ±.005 ±.0005</p> <p>mm ±0.5 ±0.13 ±0.013</p> <p>ANG. ± 50 GRADOS</p> <p>ELIMINAR REBABAS Y ORILLAS FILOSAS DEL BORDE.</p> <p>PULG .003-.015 mm 0.1-0.4</p> <p>FILETEAR ESQUINA: PULG .020 mm 0.5</p> <p>MAQUINAR SUPERFICIES</p> <p>PULG 125 mm 3.2</p>	<p>DIMS METRICAS MOSTRADAS [PARENTESIS]</p>
---	---

DIBUJADO POR:	G.Rodriguez	05-16-2011
APROBADO POR:	T.Reyes	05-16-2012
TERCER ANGULO DE PROYECCION		FECHA EDS: 11-11-2011
CONFIDENCIAL: ESTE DIBUJO Y SU INFORMACION SON PROPIEDAD DE USO EXCLUSIVO Y CONFIDENCIAL DE REGAL-BELOIT CORPORATION. Y NO DEBERAN SER REVELADOS, DUPLICADOS, DISTRIBUIDOS O USARSE DE OTRA MANERA SIN EL CONSENTIMIENTO ESCRITO DE REGAL-BELOIT CORPORATION. -TODOS LOS DERECHOS RESERVADOS.	REV. FORMATO: G	

DESCRIPCION:	
MODEL-CFHP-56FR OUTLINE	
TAMAÑO: C	NUMERO DE DIBUJO: B585
ESCALA: NONE	HOJA: 1



版本	ECO	编制	日期	批准	日期
B	0025366	J.M.Ramirez	04-13-2012	R.Rascon	04-13-2012

形位公差	除另有注明
□ 平面度	尺寸公差如下:
— 直线度	英寸 X XX XXX XXXX
∠ 倾斜度	英寸 ±.1 ±.02 ±.005 ±.0005
⊥ 垂直度	毫米 ±0.5 ±0.13 ±0.013
// 平行度	角度 ±.50 度
○ 圆度	清理毛刺和尖棱
⊘ 圆柱度	英寸 .003-.015 毫米 0.1-0.4
△ 面轮廓度	内圆角
∩ 线轮廓度	英寸 .020 毫米 0.5
⤴ 圆跳动	表面粗糙度
⊕ 位置度	英制 125 米制 3.2
◎ 同轴度	米制尺寸显示在 [ ]
≡ 对称度	

ASME Y14.5M 1994	米制尺寸显示在 [ ]
------------------	-------------

绘图:	G.Rodriguez	05-16-2011
批准:	T.Reyes	05-16-2012
第三角投影	⊕	图纸格式发布日期 11-11-2011 图纸格式版本 G
机密: 本图纸及相关信息所有权归REGAL-BELOIT CORPORATION 未经REGAL-BELOIT CORPORATION书面授权, 不得泄露、 复制、传播或作其他用途。—版权所有		

名称	
MODEL-CFHP-56FR OUTLINE	
图幅	图号
C	B585
比例	页号
NONE	1